



BEYOND MARINA



INFLATABLE
FLOATING DOCK

BEYOND MARINA®

Inflatable Floating Dock Owner's Manual

WARNING :


Read carefully and understand all ASSEMBLY AND OPERATION INSTRUCTIONS before operating. Failure to follow the safety rules and other basic safety precautions may result in serious personal injury.


Thank you very much for choosing this Beyond Marina product!


Save the receipt, warranty and these instructions. It is important that you read the entire manual to become familiar with this product before you begin using it.


This product is designed for certain applications only. The manufacture cannot be responsible for issues arising from modification. We strongly recommend this product not be modified and/or used for any application other than that for which it was designed. If you have any questions relative to a particular application, DO NOT use the product until you have first contacted us to determine if it can or should be performed on the product.

GENERAL SAFETY RULES

 **WARNING :** Read and understand all instructions. Failure to follow all instructions listed below may result in serious injury.

 **CAUTION:** Do not allow persons to operate or assemble this Floating Dock until they have read this manual and have developed a thorough understanding of how the Floating Dock works.

 **WARNING :** Do not leave on hot surfaces such as pavement or sand for a prolonged period of time. Doing so may cause damage to the dock.

 **WARNING :** The warnings, cautions, and instructions discussed in this instruction manual cannot cover all possible conditions or situations that could occur. It must be understood by the operator that common sense and caution are factors which cannot be built into this product but must be supplied by the operator. Beyond Marina is not responsible for injuries while using this inflatable Dock.

KEEP THIS INSTRUCTION FOR FUTURE REFERENCE

PERSONAL SAFETY

- **ALWAYS** use extreme caution when using this product. Acting in a careless manner or misusing the product may result in serious injury or death.
- Consult your physician before using this Floating Dock. Use this product only if you are in good physical health. User must know how to swim.
- **DO NOT** exceed the Floating Dock weight capacity. Proper distribution of weight is necessary to ensure proper balance and performance.
- Users are responsible for their own safety and the safety of others when using this product.
- Check your local city and state laws and ordinances for licensing rules.
- Users of this product must be 15 years of age or must have a legal guardian read these warnings and safety precautions. Do not use this product without adult supervision.
- **DO NOT** use this product while under the influence of alcohol, drugs or medications.
- **THIS IS NOT A LIFESAVING DEVICE, NO DIVING OFF THIS PRODUCT.**
- The product is not intended to be towed by any watercraft.
- Users must wear a Coast Guard Approved personal flotation device (PFD) at all times.
- Examine each D-ring after each use and repair it if there are signs of wear.
- Always check for possible air leaks before using this inflatable deck.
- **DO NOT** over inflate. 15 psi MAX psi. Recommend usage psi between 10 to 12 psi.
- **DO NOT** use in strong winds.
- **DO NOT** leave on warm sand or warm surface fully inflated.
- **Rapid deflation is possible. Always wear a certified life jacket.**

FLOATING DOCK USE AND CARE WEATHER CONDITIONS AND LOCATION

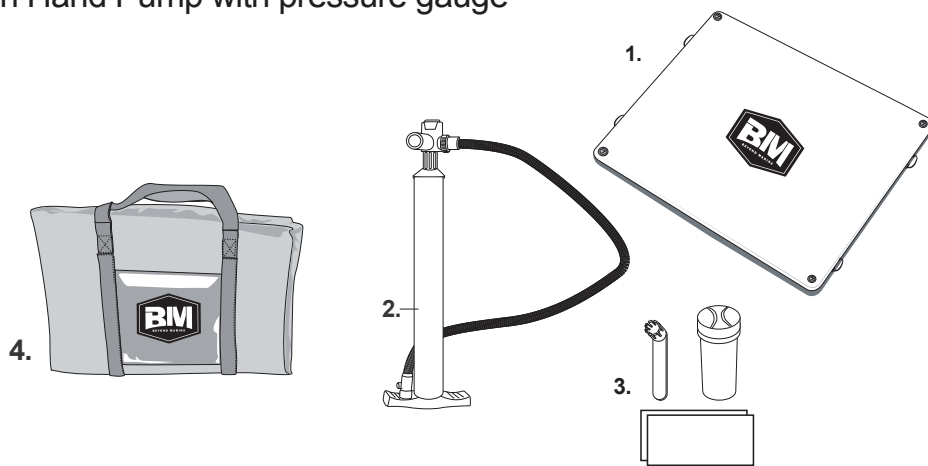
- Observe Coast Guard rules and regulations when using this product.
- Do not use this product in offshore wind conditions.
- Do not use this product in more than 10 knots of wind. Windy conditions may result in serious injury or death.
- Do not leave on warm sand or surface. This can cause damage to your Dock
- Caution should be used when carrying this product. Carrying the dock in windy conditions may result in serious injury to the users and other nearby.
- Do not use this product in thunderstorms and lightning conditions.
- Do not use the product in conditions that are beyond the user's ability (examples, but not limited to high surf, riptides, currents, or river rapids).
- Do not use this product near other boat traffic, or watercraft.

- The US Coast Guard has ruled that any large flotation device used outside of the "surf zone" is considered a watercraft. As such when in flat-water streams, lakes, rivers, bays, etc. you must have a USCG approved Life Preserver (PFD) onboard your Dock for each passenger. This "Rule" is being enforced by State and Local authorities nationwide as well. Additionally, ALWAYS WEAR A Personal Flotation Device when using this Dock.

CONTENTS:

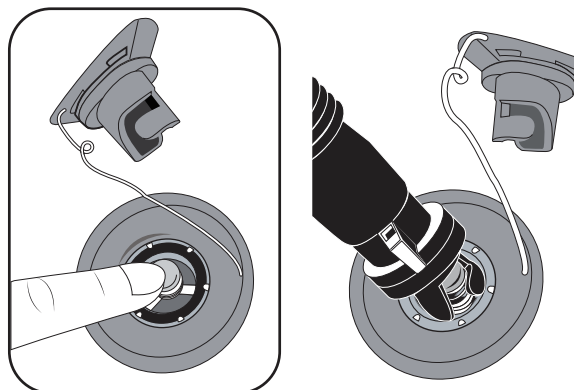
As you open the carton, make sure the following are inside:

1. Floating Dock
2. Double Action Hand Pump with pressure gauge
3. Repair kit
4. Carry Bag



INFLATION PROCEDURE

1. Remove from carrying bag and unfold Dock.
2. Unscrew valve cap.
3. Make sure stem is in up position. If valve stem is not in up position turn right or left to release as shown below.
4. Screw hose into the pump.
5. Attach other end of hose to the inflation/deflation valve on the top of the Dock (shown below)



6. Stand the pump on hard, level ground and start to pump. The first time you inflate the Floating Dock will require more effort than subsequent inflation.
7. Make sure you keep your hands toward the center of the pump handles when pumping and your feet firmly on the footrests of pump.

We recommend using the Floating Dock at a pressure between 10 to 12 psi. 15 PSI is Maximum Pressure.

DEFLATION PROCEDURE:

1. When you are ready to deflate your Floating Dock, unscrew the valve cover, gently push down the valve stem to release some pressure.
2. Once you have released some of the pressure, push down valve stem and twist to the left or right to lock valve stem in down position. This will lock the valve open and allow air to escape from the Dock while you roll it up for storage.
3. Clean and check the Dock as well as all the accessories. Make sure the Dock is completely dry before putting it away. Make sure that no sand or gravel remains inside the Floating Dock or between the hull and the inner chambers. This could result in abrasion or even punctures while storing the Floating Dock.

NOTE: Do not leave your Floating Dock exposed to the warm sun on a hard or sand surface check If it is going to be exposed to direct heat relieve some pressure first. The Dock may become over inflated and stretch and damage the material. The ambient temperature affects the tube's internal pressure; a variation of 1.8 degrees Fahrenheit (1°C) causes a variation of the pressure in the tube of +/- 0.06psi (4mbBar)

Your new Floating Dock is made from durable drop stitch and PVC. If a tear or puncture does occur, PVC is easy to repair. Repairs are easily done with your included patch kit. Read the following paragraphs for leak detection and repair tips.

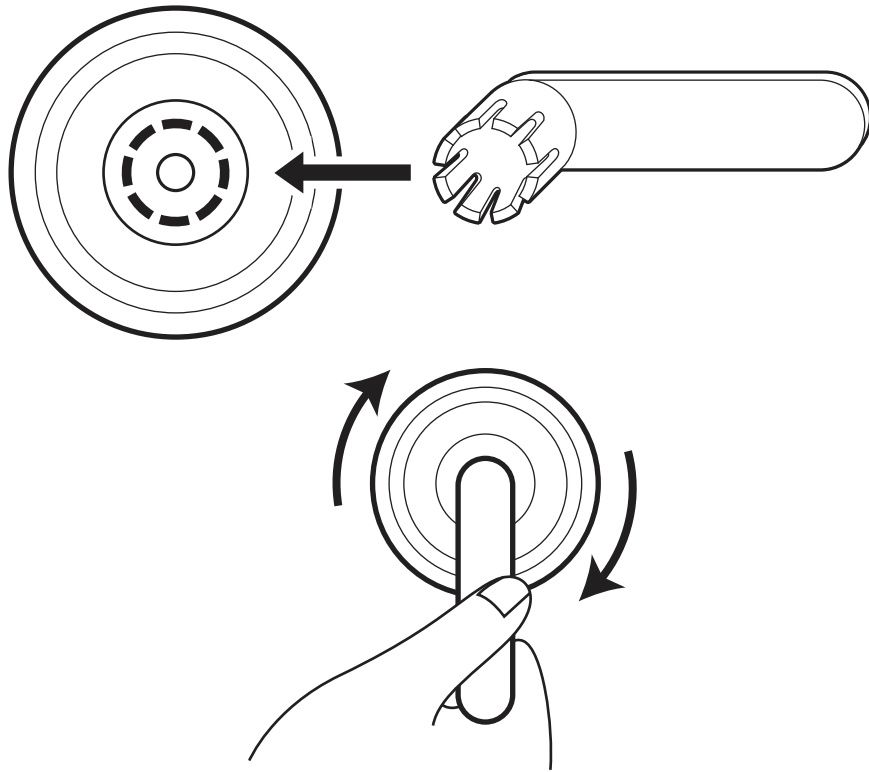
AIR LEAK DETECTION:

1. If you are losing air pressure, not caused by colder temperatures, check the dock for leaks, starting with the valves. Use the method in step 2 for best results.
2. To locate a leak, we recommend mixing soap and water in a spray bottle. Spray around the area you think is leaking. If you see bubbles forming that should be where the leak is.

REPAIRS:

Please follow the instructions below to repair a leaking air valve or to inspect unlikely dock leaks.

1. Using the Repair Kit, remove the valve wrench.
2. Insert the valve wrench into the air valve and turn clockwise until tightened securely. Do NOT over tighten - snug is good (see diagram below).
3. Remove valve wrench, inflate floating dock and monitor for further leakage. If Floating Dock continues to lose air, check the valve again and tighten further. Inflate and monitor
4. If floating dock continues to lose air, inflate fully, place it in water and monitor carefully for any escaping air bubbles from the portion of the dock submerged in water. If no bubbles appear, flip dock so EVA deck is in water and monitor again. If any bubbles appear, locate the leak and follow instructions on the patch repair kit.
5. Complete curing of the bond will take approximately 24 hours. Do not put air pressure in the chamber before that time.



WARNING :

- Perform all of your repairs in a well-ventilated area.
- Avoid inhaling toxic vapors.
- Avoid contact with adhesive.
- Keep all repair materials (glue, solvents, etc.) away from the reach of children.

STORAGE AND DOCK CARE:

To ensure extra years of flexibility and bright colors, avoid storing the dock where it will be exposed to weather or in direct sunlight. Please review the following list for storage and dock care tips.

1. Before storing, hose off the Floating Dock and let it dry completely to prevent mildew buildup. Do not use harsh chemicals for cleaning. Most dirt can be removed with a mild soap and fresh water.
2. Do not store for extended period in extreme conditions (above 90 F or below 40 F). Store in a clean cool dry place. Do not leave the Floating Dock in direct sunlight as this may cause fading over a prolonged period.
3. Storing the dock indoor within a secure vented container, so rodents or animals can not damage the product.

WARRANTY

WARRANTY CLAIM:

180 Days Manufacture Limited Warranty from date of purchase. Abnormal defects in materials and workmanship are guaranteed. Contact us to submit warranty claim, provide us some photos of products. We will respond to you within 2-3 business days with a complete resolution.

ACTIVATE YOUR
WARRANTY
NOW

Get A Free Gift On BM Website!



Follow us @beyondmarina



YouTube

www.bmsup.com

