

Creating a Project File from an existing system (wireless)



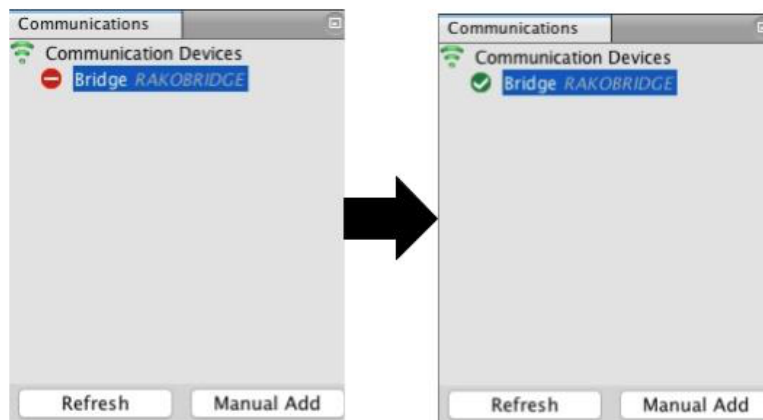
This guide assumes that the system has a Bridge/Hub with an up to date Project File uploaded to it.

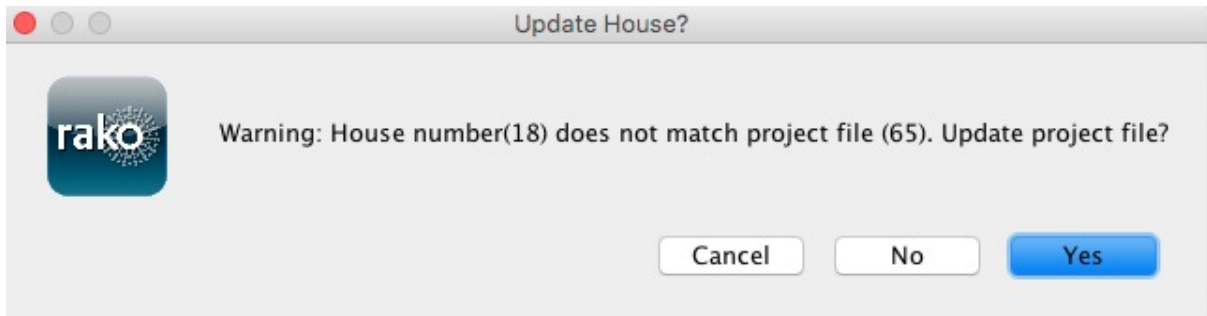
Step 1 Create a blank project file

- Open the New Project Wizard and give the file a suitable name (do not worry about getting the correct house number at this stage).
- Click "next" leaving all other screens blank, on the final screen click "finish" to create a blank project file.

Step 2 Connect to the Bridge/Hub

- Assuming the computer running the software is connected to the same network as the Bridge/Hub it should appear in the communications window in the bottom right of the screen
- If it fails to appear click the "refresh" button.
- To connect to the Bridge/Hub double click on the "stop sign" so that it changes to the "tick" (as below).





- As this happens a pop up box will appear. Click "yes" so that the project file House number changes to the Bridge/Hub (system) House number.

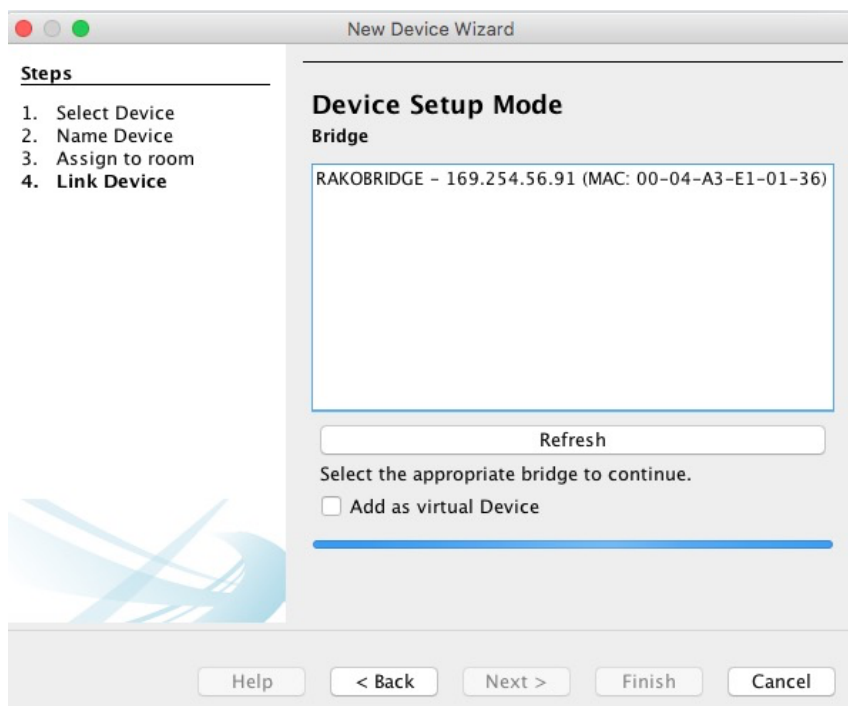
NB

If there is a problem connecting to the Bridge/Hub please refer to "connecting to the Bridge/Hub" in the appendix of all programming guides.

Step 3 Add the Bridge/Hub as a device

Once the Bridge/Hub has been connected to the next stage is to add it into the project as a device.

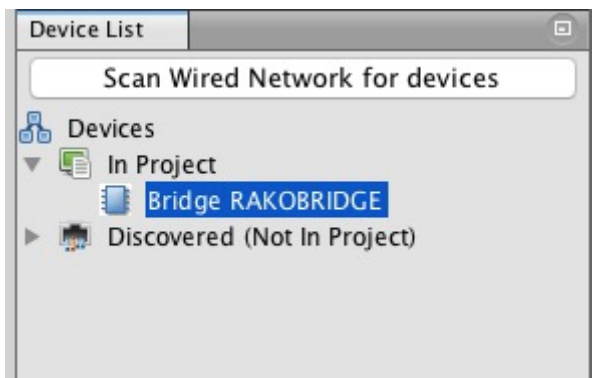
- Select "File" - "New Device" to open the "New device wizard".
- Select "Bridge/Hub" from the list.
- Click "next" through both the "Name Device" and "Assign to room" screens.



The bridge type needs to be set before all the panels are visible

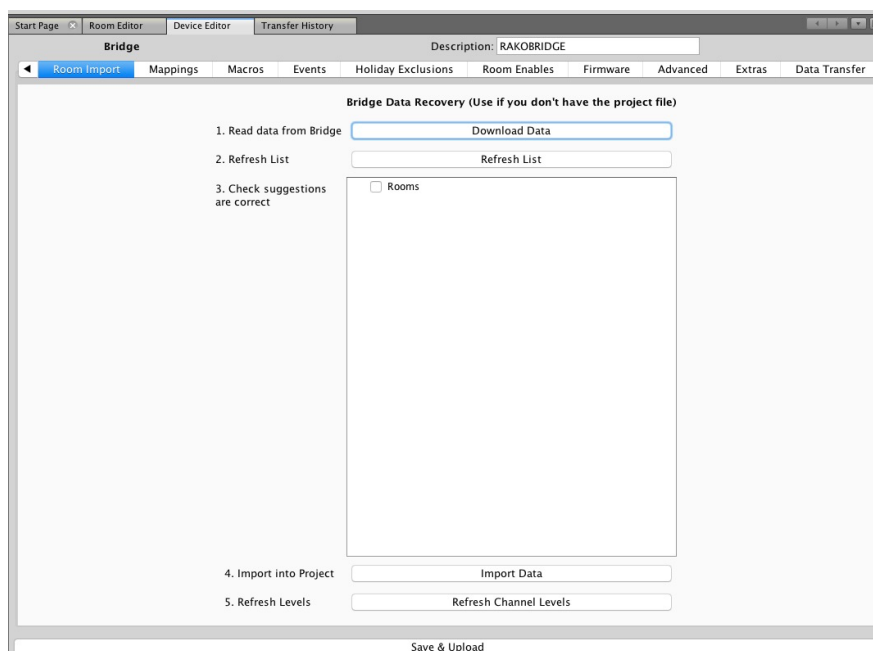
Update Now

- The Bridge/Hub should appear on the "Link device screen" as above. Select it from the list and click "Finish" followed by "Update Now" to complete setup.
- The Bridge/Hub will now appear in the device list as below.

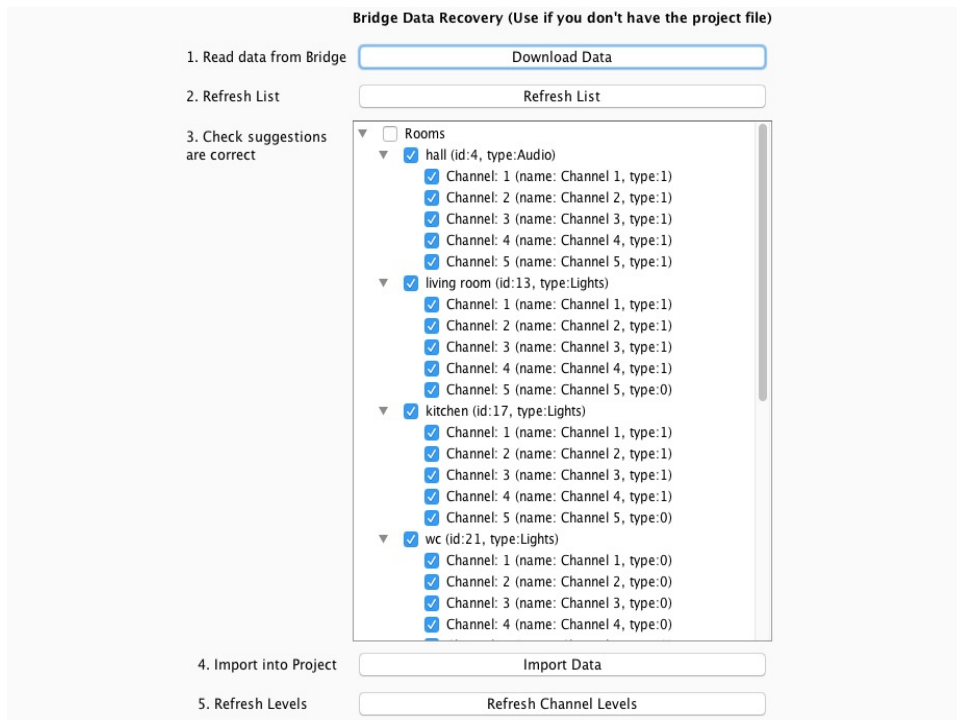


Step 4 Importing the room and channel data from the Bridge/Hub

- Select the Bridge/Hub in the Device List to open it in Device Editor
- Select the "Room Import Tab" from the top of the Device Editor, this will open a page as below.



- Press the "Download data button at the top of this page. This will open the data for preview on this page.



- Press "Import Data" to write the Room and Channel information in to the Project File.
- Press "Refresh Channel Levels" to write the Scene data in to the Project File.
- The Project File for system has now been created

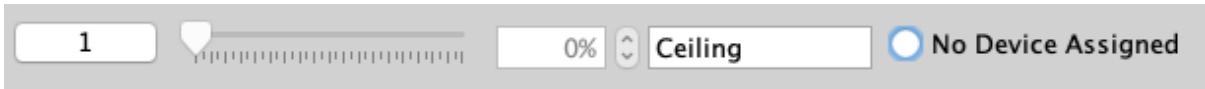
It is possible for additional information to be downloaded from the system from, for example RTC-Bridge/Hub, RNC, RCI, RSR-DLI <https://rakocontrols.com/media/1291/wireless-module-system-setup-guide.pdf> etc. Use the "Data Transfer" or "NFC Transfer" tabs after adding the relevant device. Further information on how to achieve this can be found in the relevant instruction manuals.

Further Notes

Assigning devices in the software is not required for correct system operation. If the file has been downloaded for adjusting Scenes or adding new modules then the file can be left as it is at the end of Step 3.

Assigning devices:

No devices or device information can be downloaded from a wireless system. Once completing this process all the room and channel information will be downloaded but they will all have "no device assigned":



This will in no way affect the operation of the system and often just having room and channel data is enough information to successfully work on the system.

To assign devices, right click on “No device assigned” and then select “New device” (you will need to know what sort of module you are assigning). Proceed through the new device wizard as normal but ignore the section where you are asked to put the module in to setup mode.

Device settings:

It is also not possible to download Device settings from a wireless system. If Device settings such as fade rates, ignores, profiles etc. do need to be accessed the original project file is essential.

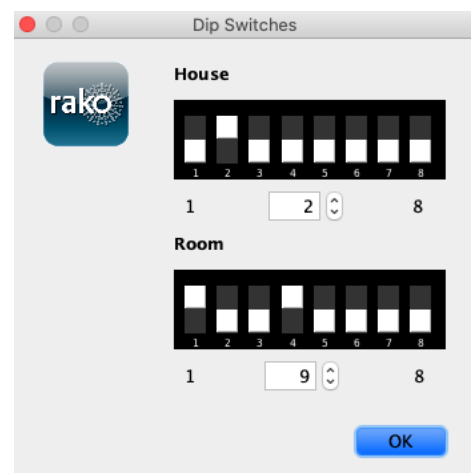
If this is not available then these settings should be reset to defaults and programmed from scratch.

Creating a file from a existing system without a Bridge/HUB

Wireless System with RCMs

If the system that is being recreated has RCM keypads and no Bridge installed. It is possible to manually recreate the file by referring to dip-switch settings.

- Remove keypad from wall
- Look at dip-switches on the back off keypad
- Refer to the “Dip Switches” tab on Rasoft to see what house and room number the keypad is assigned to.



- Add all of the different rooms to the project file using this method.
- After all of the rooms are added, add channels to each room.
- Slide the slider from 0%-100% on each channel one at a time and label what circuit you can visually see turn off and on. The number "Ident" button can also be used.

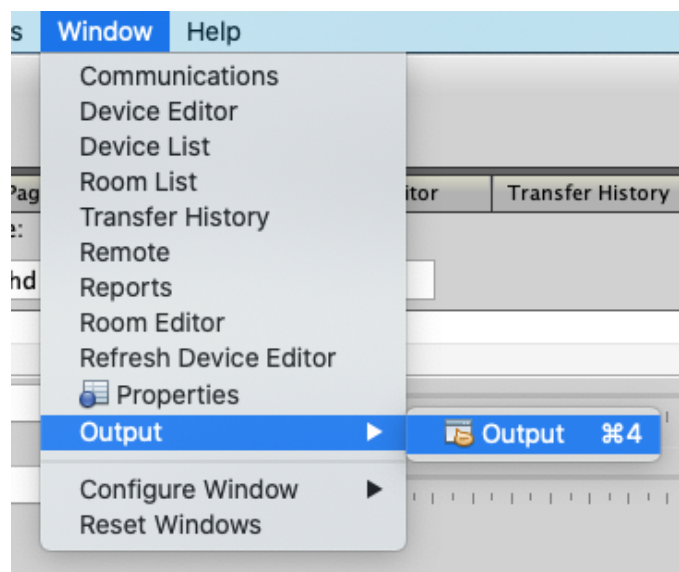


After doing this the project file is in a similar state to if it had been downloaded from the Bridge. However the Scenes will need to be manually reset if desired.

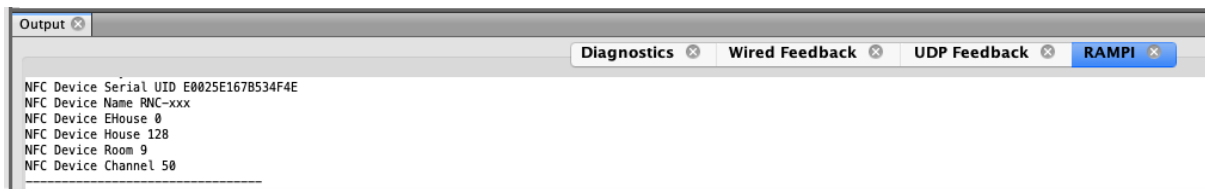
Wireless System with RNCs

If the system has RNC keypads instead of RCMs then a Rampi is needed to find out which House and Room the keypad is assigned to.

- Open Rasoft Pro
- Connect to Rampi by double clicking it in the "Communication Devices" tab.
- Locate the "Window" option from the toolbar at the top of the screen
- Select "Output" as shown in the picture below:



- Now select the "Rampi" tab that pops up along the bottom of the screen
- Take RNC keypad off wall and place onto Rampi
- Now type "NFC" into the Rampi tab and the room house and channel number will come up like it is shown in the picture below.



- Add all of the different rooms to the project file using this method.
- After all of the rooms are added, add channels to each room.
- Slide the slider from 0%-100% on each channel one at a time and label what circuit you can visually see turn off and on. The number "Ident" button can also be used.

After doing this the project file is in a similar state to if it had been downloaded from the Bridge. However the Scenes will need to be manually reset if desired.