

## Creating a file for an existing system (wired)



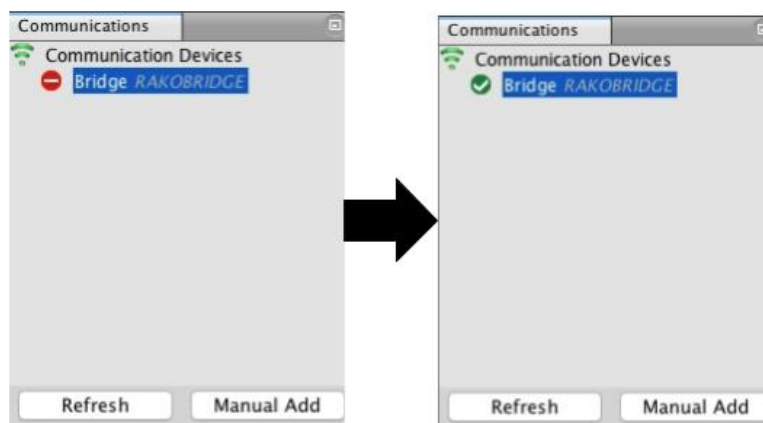
This guide assumes that the system has a Bridge/Hub with an up to date Project File uploaded to it.

### Step 1 Create a blank project file

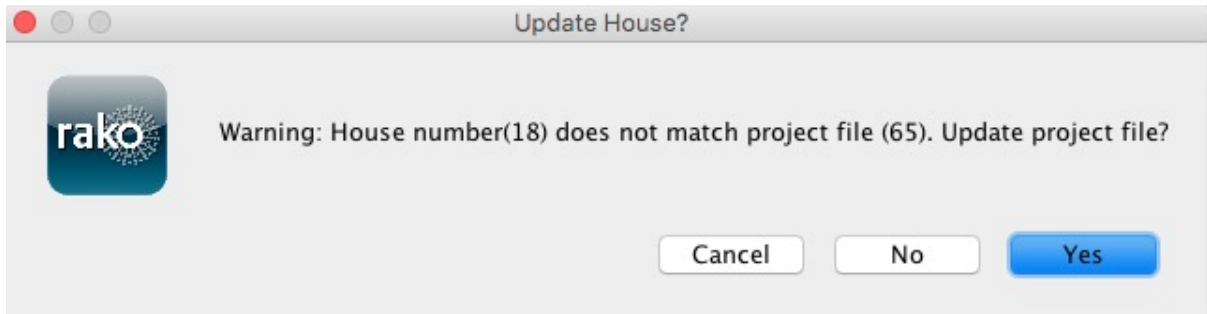
- Open the New Project Wizard and give the file a suitable name (do not worry about getting the correct house number at this stage).
- Click "next" leaving all other screens blank, on the final screen click "finish" to create a blank project file.

### Step 2 Connect to the Bridge/Hub

- Assuming the computer running the software is connected to the same network as the Bridge/Hub it should appear in the communications window in the bottom right of the screen
- If it fails to appear click the "refresh" button.
- To connect to the Bridge/Hub Double click on the "stop sign" so that it changes to the "tick" (as below).



- As this happens a pop up box will appear. Click "yes" so that the project file House number changes to the Bridge/Hub (system) House number.



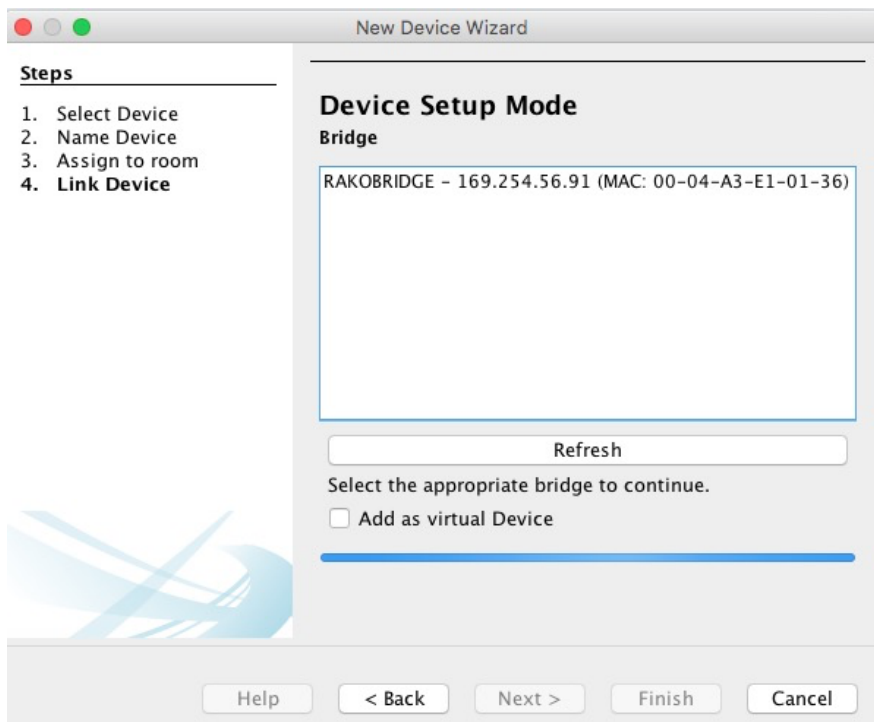
NB

*If there is a problem connecting to the Bridge/Hub please refer to "connecting to the Bridge/Hub" in the appendix of all programming guides.*

### Step 3 Add the Bridge/Hub as a device

Once the Bridge/Hub has been connected to the next stage is to add it into the project as a device.

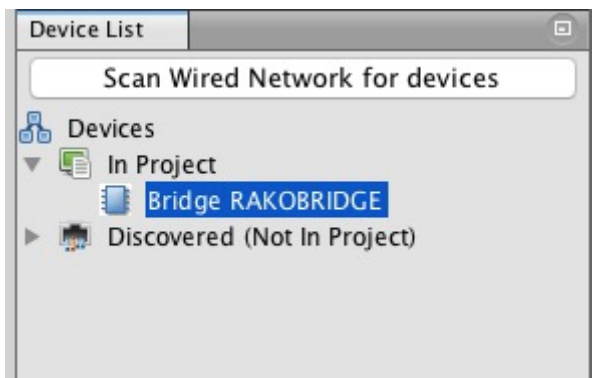
- Select "File" - "New Device" to open the "New device wizard".
- Select "Bridge/Hub" from the list.
- Click "next" through both the "Name Device" and "Assign to room" screens.



**The bridge type needs to be set before all the panels are visible**

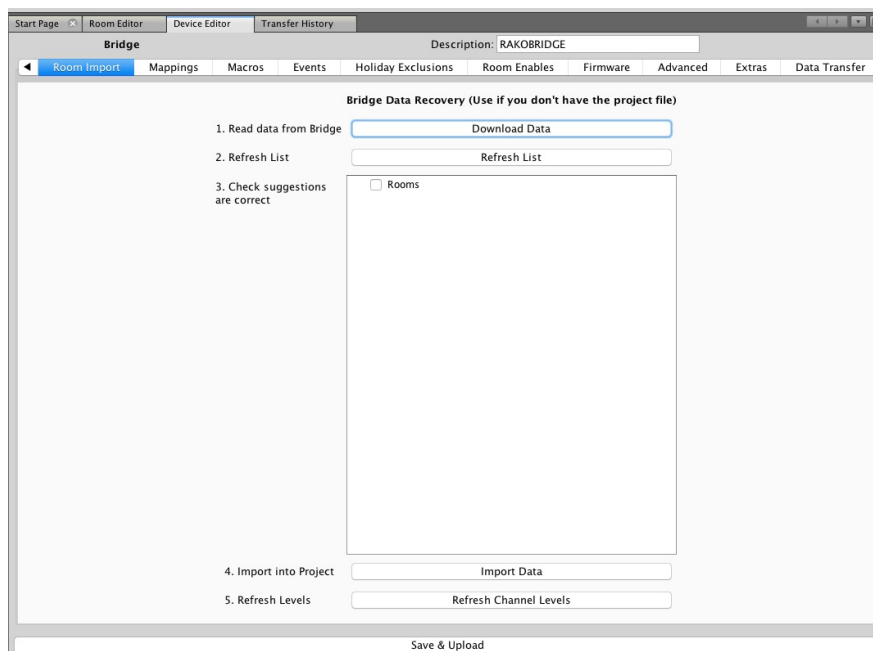
Update Now

- The Bridge/Hub should appear on the "Link device screen" as above. Select it from the list and click "Finish" followed by "Update Now" to complete setup.
- The Bridge/Hub will now appear in the device list as below.

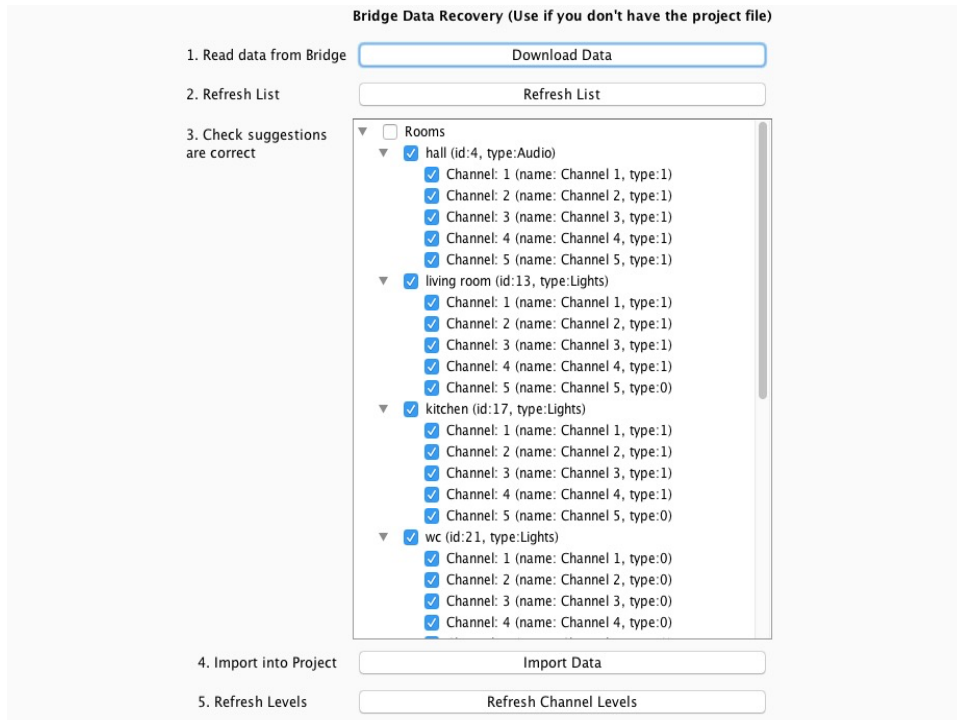


#### Step 4 Importing the room and channel data from the Bridge/Hub

- Select the Bridge/Hub in the Device List to open it in Device Editor
- Select the "Room Import Tab" from the top of the Device Editor, this will open a page as below.



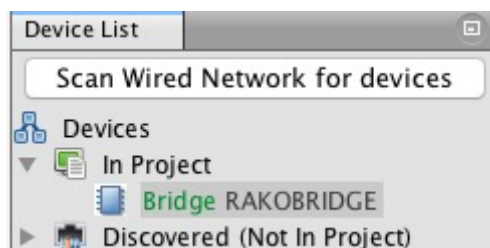
- Press the "Download data button at the top of this page. This will open the data for preview on this page.



- Press "Import Data" to write the Room and Channel information in to the Project File.
- Press "Refresh Channel Levels" to write the Scene data in to the Project File.
- The project file should now be populated with Rooms and Channels

## Step 5 Scanning the wired network for devices

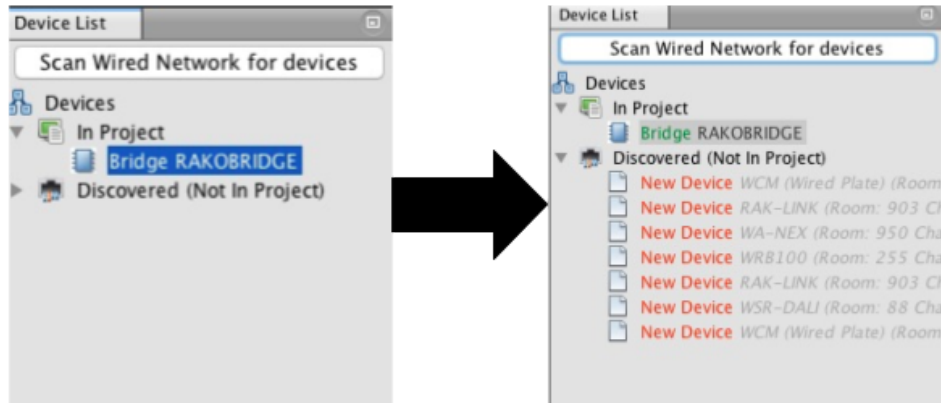
- Press the "Scan Wired Network for devices" button at the top of the device list.



- A warning will pop up, press "yes" to continue and find all the wired devices.

NB

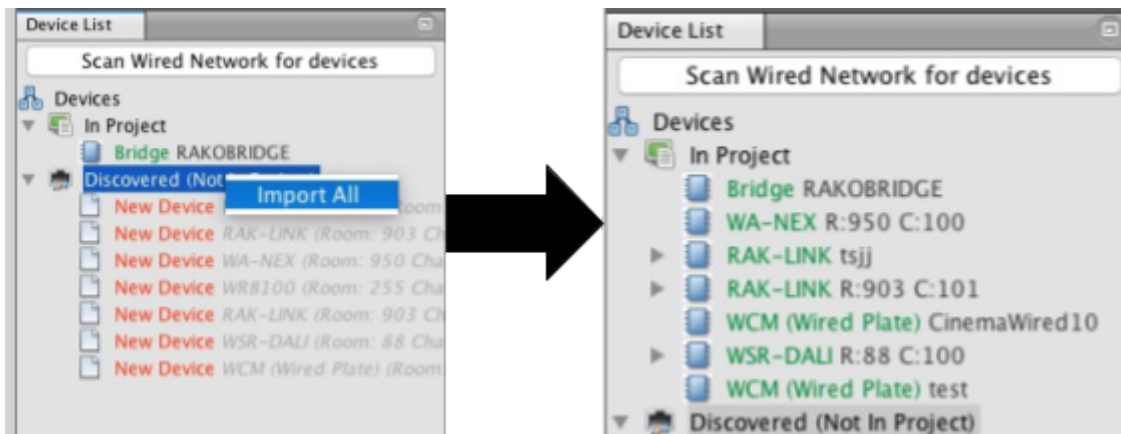
*This warning is to stop this button being used to scan new systems on default settings. This tool is for downloading a file from a programmed system only.*



- These discovered devices will be placed in "Discovered (Not in Project)". If they do not appear expand the list by clicking on the arrow to the left.

## Step 6 Importing the wired devices

- Right click on "Discovered (Not in Project)" and select "Import All"



- All wired devices will now be included in the project file with current system settings up to date.
- Individual devices can also be imported by right clicking on each one in the "Discovered (Not in Project) list.
- The Project file for system has now been created

Where additional device is required, for example from a WTC-Bridge/Hub, use the "Data Transfer" tab within the relevant device.