

Bronte Bed Assembly Instructions

Parts

Headend x 1
Side Rails x 2
End Rails x 2
Centre Rail x 1
Slats x 10
Legs x 4

Corner Brackets x 4
3/4 inch screws x 16
Joiner Bolts x 4
50mm JC Bolts x 4
Allen Key

Tools Required

10mm Spanner
13mm Spanner
Phillips Screwdriver



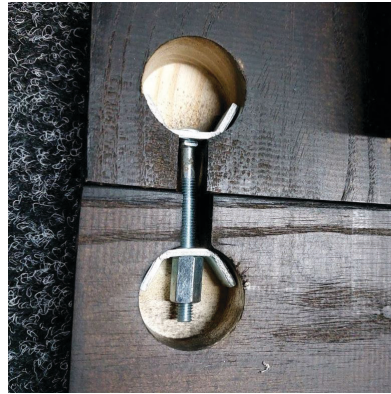
Step 1

Sit frame together upside down using the 2 x side rails and 2 x end rails. Ensure the 4 insert nuts on the rails for the headboard to bolt into are all the same end.



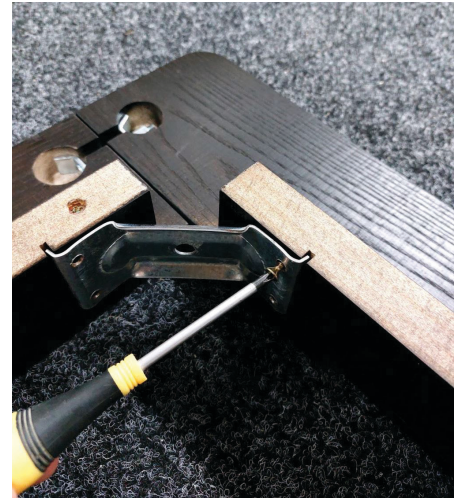
Step 2

Use 10mm spanner to tighten joiner bolts on all four corners (ensure all joints are flush when tightening)



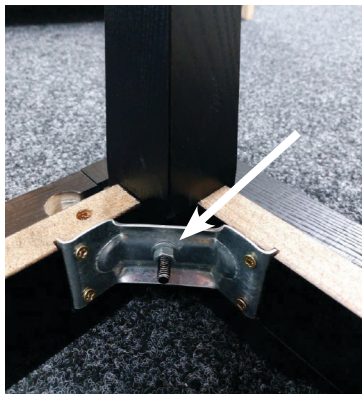
Step 3

Slide corner brackets into grooves and screw in place.



Step 4

Bolt legs in place using the 13mm spanner.



Step 5

Flip frame over and fit centre rail and slats.



Step 6

Sit headend in place and bolt to the frame using the 50mm JC Bolts. The bolts go down through the bottom of the headend and into the frame from the back. You will need someone to hold this in place while doing up the bolts.



That's it, you're done!

Congratulations on assembling your Bronte Bed!

