



**COYOTE
SWAP**

FAT FENDER GARAGE

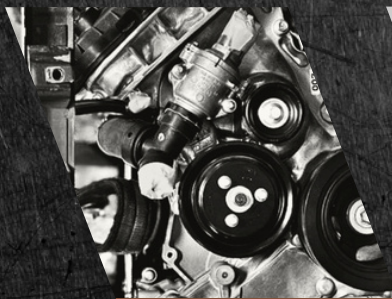
**VEHICLE
CUSTOMISATION SHOP**



INSTRUCTION MANUAL

HIDE AWAY MOUNT

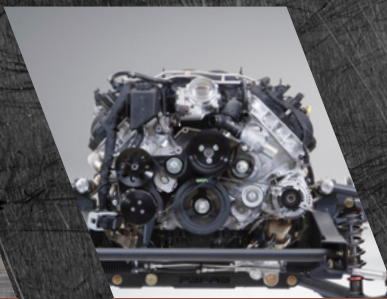
RIDETECH RIDEPRO E5



**COYOTE ENGINE
SWAP**



**VEHICLE
RESTORATION**



**PREMIER CLASSIC
TRUCK CHASSIS**



**Contact US
480 - 621 - 6072**



www.fatfender.com

HIDE AWAY MOUNT - RIDETECH RIDEPRO E5

FFG INSTALLATION GUIDE

Package Includes:

- Controller Mount
- Mounting Surface
- Mounting Block
- Hardware



Step 1: Mount Controller

- Screw the controller mount to the smaller mounting surface of the hinge using the provided 6-32 x 1/4" button head screws.
- We recommend applying blue Loctite.



This is an orientation and screw location reference photo.

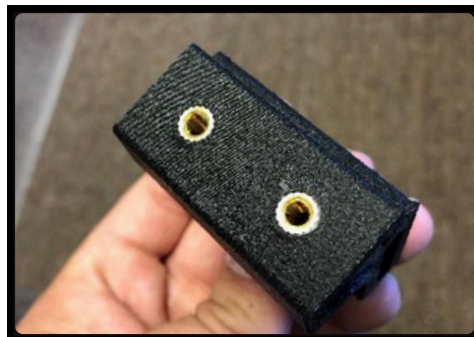
Step 2: Attach Blocks

- Screw the mounting block to the larger mounting surface of the hinge using the provided 6-32 x 1/4" button head screws.
- We again recommend applying blue Loctite.



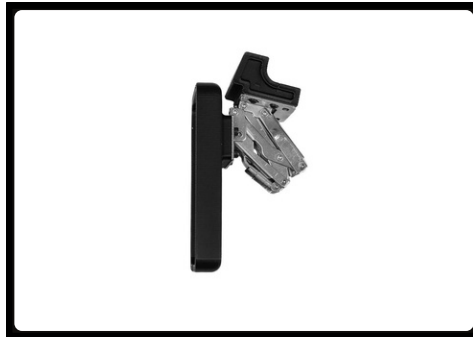
Step 3: Drill Holes

- The holes that you need to drill for the mounting block are 1" apart. We recommend using a 5/32" drill bit.
- Once you have drilled your holes, you can install the hinge assembly under your dash using the provided 10/32 x 3/8" button head screws.



Step 4: Test Fitment

- Check to make sure that the Hideaway mount is snug and secure and test its function.
- Any loose screws can have Loctite added to them, to further ensure their durability.



FAT FENDER GARAGE

We're always happy to serve you. If you have any suggestions or comments regarding our products and services, please feel free to share them with us. We will be glad to hear from you. We highly value our customers.

-THANK YOU



FREE CHASSIS CONSULT

FROM FAT FENDER GARAGE

LEARN MORE



1315 N Marvin Ct,
Phoenix AZ, 85233

Phone:

480 - 621 - 6072

www.fatfender.com