



**COYOTE
SWAP**

FAT FENDER GARAGE

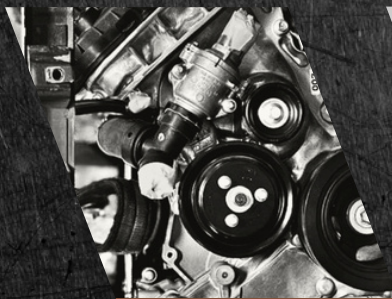
**VEHICLE
CUSTOMISATION SHOP**



INSTRUCTION MANUAL

HIDE AWAY MOUNT

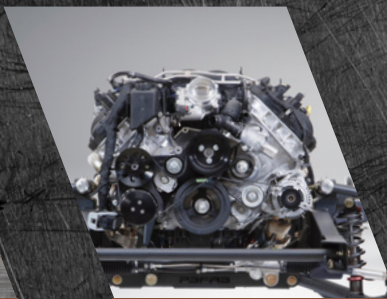
FI TECH - OLD STYLE



**COYOTE ENGINE
SWAP**



**VEHICLE
RESTORATION**



**PREMIER CLASSIC
TRUCK CHASSIS**



**Contact US
480 - 621 - 6072**



www.fatfender.com

HIDE AWAY MOUNT - FI TECH- OLD STYLE

FFG INSTALLATION GUIDE

Package Includes:

- Controller Mount
- Mounting Surface
- Mounting Block
- Hardware



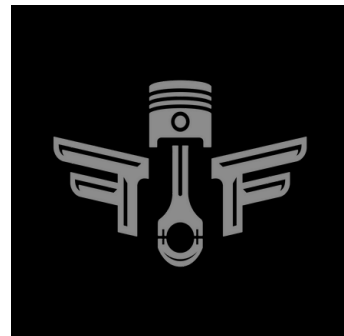
Step 1: Replace Screws

- Remove the 4 phillips head screws from the back of your FiTech controller.
- These will be replaced with the 4 provided M2.5 x 14mm socket head screws.
- We recommend applying blue Loctite.



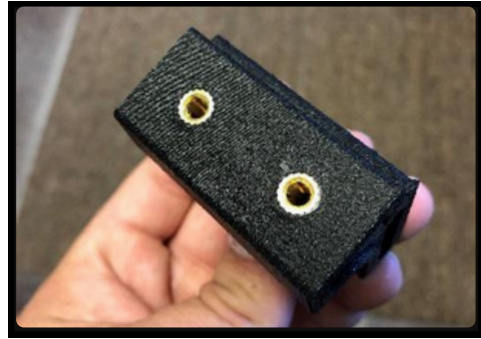
Step 2: Mounting Blocks

- Using the 8 provided 6-32 x 1/4" button head screws, attach your controller mount and the mounting block to the hinge.
- We recommend applying some blue Loctite to these to ensure that the screws don't come loose over time.
- **NOTE:** Be careful not to overtighten these screws. The thread lock will keep them in place.



Step 3: Drill Holes

- The holes that you need to drill for the mounting block should be 1" apart. We recommend using a 5/32" drill bit.
- Once you have drilled your holes, you can install the hinge assembly under your dash using the provided 10-32 x 3/8" button head screws.
- We recommend applying some blue Loctite to these to ensure that the screws don't come loose over time.
- Double check the fitment and operation and use Loctite on any loose screws.



FAT FENDER GARAGE



We're always happy to serve you. If you have any suggestions or comments regarding our products and services, please feel free to share them with us. We will be glad to hear from you. We highly value our customers.

-THANK YOU



1315 N Marvin Ct,
Phoenix AZ, 85233

Phone:

480 - 621 - 6072

www.fatfender.com