



**COYOTE  
SWAP**

# FAT FENDER GARAGE

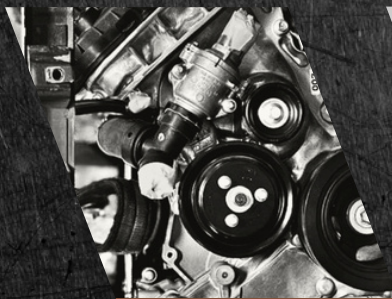
**VEHICLE  
CUSTOMISATION SHOP**



## INSTRUCTION MANUAL

**PEDAL MOUNTS**

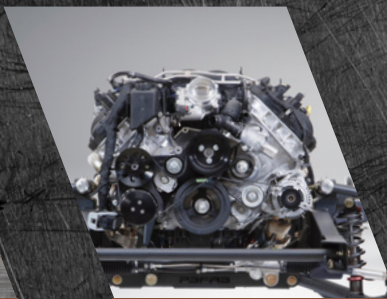
**1953-56**



**COYOTE ENGINE  
SWAP**



**VEHICLE  
RESTORATION**



**PREMIER CLASSIC  
TRUCK CHASSIS**



**Contact US  
480 - 621 - 6072**



**[www.fatfender.com](http://www.fatfender.com)**



# PEDAL MOUNTS - 1953-56

## FFG INSTALLATION GUIDE

### Package Includes:

- (1) Adapter Bracket
- (2) 5/16-18x.75 Button Head Hex
- (4) 5/16 Washers
- (2) 5/16 Nylon Nut
- (3) 1/4-20x1 Buttonhead Hex
- (1) 1/4-20x1.25 Buttonhead Hex
- (5) 1/4" Washer
- (4) 1/4-20 Nylock Nut



### Step 1: Remove Stock Pedal

- Remove the stock gas pedal assembly and any obstructions such as the firewall mat.



### Step 2: Remove Mat Pin

- Remove the firewall mat pin located directly above the stock gas pedal bolt holes.
- This will allow access to the upper mounting bolt hole.



### Step 3: Temporary Mount

- Temporarily mount the gas pedal assembly to the bracket using the left side of the brackets holes.



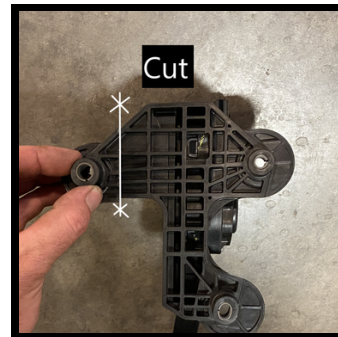
## Step 4: Drill Hole

- Use a 1/4" drill bit to drill the remaining hole in the Mustang pedal assembly.



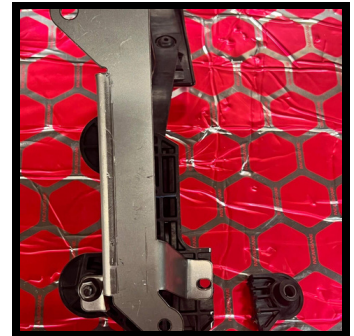
## Step 5: Cut Excess

- Remove the pedal from the bracket and cut the excess ear off of the mustang accelerator pedal.



## Step 6: Mount Pedal to Bracket and Firewall

- Mount the pedal to the bracket using the supplied hardware.
- Mount the pedal to the firewall using supplied hardware.
- Securely fasten and test proper fitment.



1315 N Marvin Ct,  
Phoenix AZ, 85233

Phone:

480 - 621 - 6072

[www.fatfender.com](http://www.fatfender.com)