

Installation Guide VAD28 for VW MK6 Golf

Thank you for purchasing the VAD28 for your VW MK6 Golf.

During the development of the product, we paid high attention to accuracy and quality. With these installation instructions, the display was trial-assembled by several test persons and continuously improved, so that you do not have any problems during the installation.

If you have any feedback, please send us an email to support@vadpro.com



General Information

The display unit is a very sensitive device. One should act with extreme caution and avoid any pressure on the housing or the display itself. VADpro assumes no liability for this conversion or for damage during the conversion or operation. The instructions were created to the best of our knowledge and belief.

The conversion time is approx. 1.5 hours for an experienced car enthusiast.

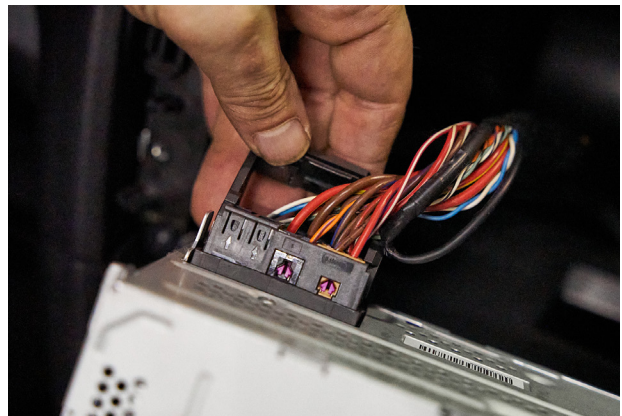
Tools Required

- Trim removal tool
- 10mm drill bit or step drill bit
- Pull-through aid (wire)
- 10mm ratchet with 10mm socket
- Torx20 nut for ratchet
- Small flathead screwdriver



Step 1 - Remove the infotainment system

Use the trim removal tool to carefully remove the trim around the infotainment system. Remove the four screws as indicated. Unplug the antenna and wiring harness.



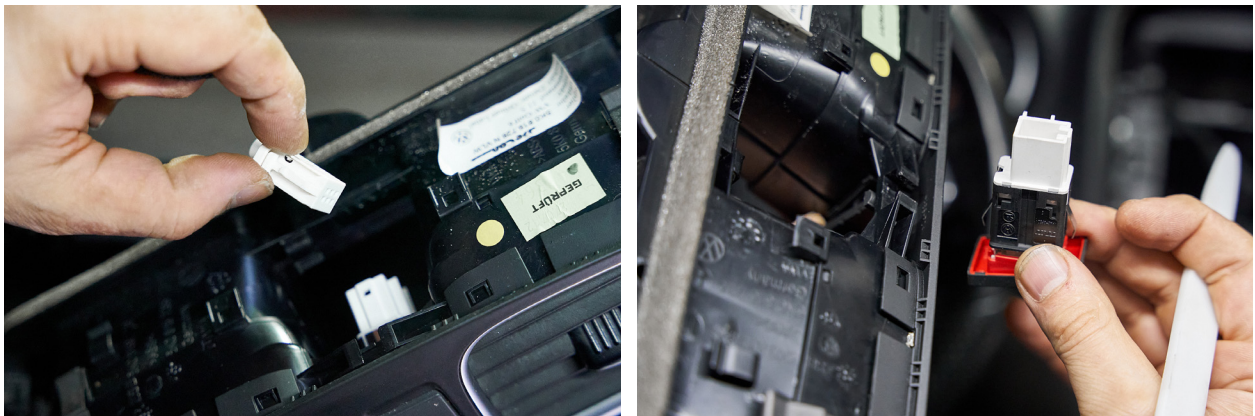
Step 2 - Remove the Air Vent

Remove the two screws from the bottom. The ventilation duct can now be pulled out together with the cover.



Step 3 - Remove the hazzard switch.

The front vent bezels held in place with small clips. Carefully pry it off with a small flat screwdriver. Take your time and don't rush.



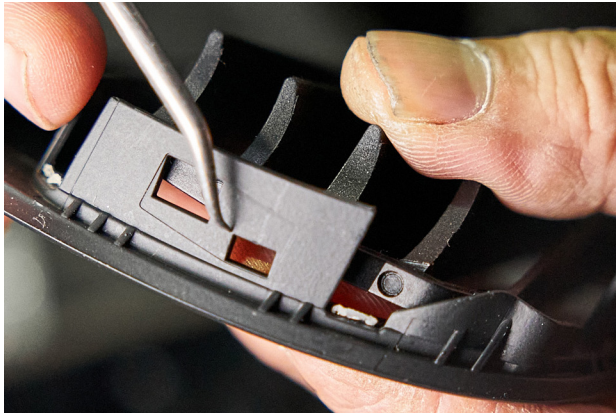
Step 4 - Remove the hazzard switch.

The front vent bezel around the vents held in place with small clips. Carefully pry it off with an interior pry tool or small flathead screwdriver. Take your time and don't rush.



Step 5 - Dismantle the vent grill closest to the steering wheel

The vent fins are held in place with tabs on both sides. Use a tool to press the tabs in and the grille can be removed from the front. For the vertical slats, widen the frame up and down a little and then remove it as well. Test fit the display in the vent frame.



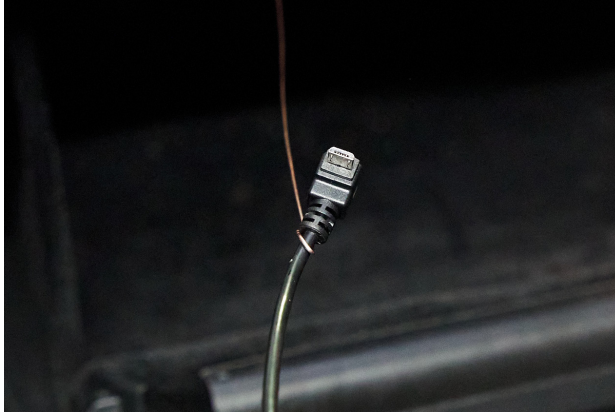
Step 6 - Cable routing

Use a drill and step drill bit to make a hole big enough for the wiring harnesses to pass through



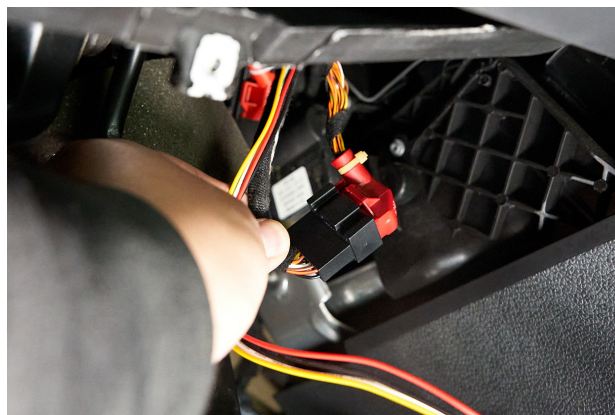
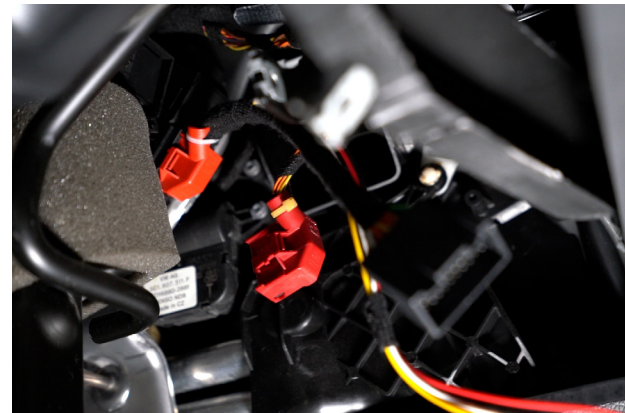
Step 7 - USB Cable routing

Pass the usb cable from the glovebox. Use some stiff wire to assist if required.



Step 8 - Install the harness adapter

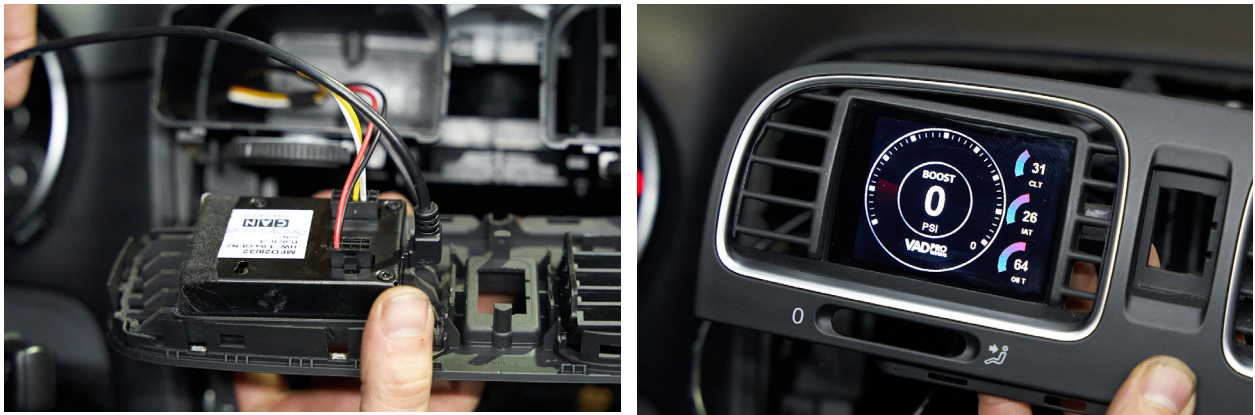
Access to the canbus is found underneath the driver's side footwell. Plug the provided VADpro CANbus harness adapter in-line and pass the harness up to the vent opening.



Step 9 - Connect the cables to the back of the display

Be careful with the USB cable. The USB socket is very small and the cable must be inserted very carefully. Damage to the USB socket must be avoided at all costs and is not covered by the guarantee.

The connection should be checked before assembly. In this case, it is sufficient to switch on the ignition when all plugs from both the display and other components are connected in order to avoid error entries.



Step 10 - Reassemble

The assembly is done in reverse order. The display should only be plugged into the OBD socket when all the plugs on the radio and buttons are plugged in again.

Once everything is back in place, the display can be plugged into the OBD socket. As soon as you turn on the ignition, the display starts.

Thank You!

We hope you have as much fun with your VADpro display as we do. If you have any questions, please send an email to info@vadpro.com