

Jura WE8

Operating & cleaning Instructions



My Coffee Shop Pty Ltd
ACN 102 850 037


390 Johnston St
Abbotsford VIC 3067
ph: 03 9946 4160

97/1-5 Harwood St
Pymont NSW 2009
ph: 02 9034 6580

Control elements

Control elements



- 1 Filler funnel cover
- 2 Filler funnel for ground coffee
- 3 Bean container with aroma preservation cover
- 4 Water tank cover
- 5 Water tank
- 6 Plug-in mains cable (back of the machine)
- 7 Coffee grounds container
- 8 Drip tray
- 9 Cover cap for grinder adjustment switch
- 10 Grinder adjustment switch
- 11 On/Off button 
- 12 Fine foam frother
- 13 Height-adjustable coffee spout
- 14 Cup grille

Operating Instructions – Jura WE8

Cappuccino

1. Place your cup under the spout on the right. Adjust the spout height to suit your cup.
2. Turn the milk selector to the foam milk position – See Fig 1.
3. Select cappuccino. Your cappuccino will now be poured.



Fig 1

Flat white

1. Place your cup under the spout on the right. Adjust the spout height to suit your cup.
2. Turn the milk selector to the flat milk position – See Fig 2.
3. Select flat white. Your flat white will now be poured.



Fig 2

Café Latte

1. Place your cup under the spout on the right. Adjust the spout height to suit your cup.
2. Turn the milk selector to the foam milk position – See Fig 1.
3. Select café latte (Latte macchiato). Your Café latte will now start pouring.
4. When your cup is 1/3 full of milk turn to the flat milk position – See Fig 2.

Espresso or Long Black

1. Place your cup under the middle spouts and select espresso or coffee. Your drink will now be poured. Press the button twice for a double espresso or two coffees.

Notes:

1. Each key is fully programmed however you can stop the milk and coffee flow short by pressing cancel. Adjustments can be made to coffee strength, milk and water quantity to suit personal preference using the arrow keys. These changes do not affect the programmed settings.
2. Milk temperature can be increased by turning the dial clockwise through the flat and foam sections – Max temperature for foam milk is at 12 o'clock and max temperature for flat milk is at 3 o'clock.



Cleaning Products – WE8

Daily

See procedure – Daily milk system clean

Must be performed at the end of each day just before the machine is turned off

Purpose: To ensure the milk system is clean overnight so milk does not go off blocking the pathways



Use Cafetto daily milk cleaner 1 litre bottle (Prod no. 71144)
or Jura Milk System Cleaner Mini Tabs 180g (Prod no. 71150)

Weekly

See procedure – Weekly milk system clean

Performed once per week

Purpose: To remove any build up of milk fats to ensure the milk frother works correctly



Use Cafetto weekly milk cleaner – 1 litre bottle (Prod no. 71145)

When prompted

See procedure - Coffee system clean

Performed only when prompted (Every 200 coffees)

Purpose: Removes coffee oil from the brewing unit and coffee path to maintain the quality of the coffee



Use Jura cleaning tablets - 6 pk (Prod no. 71111)
- 25 pk (Prod no. 71112)

See procedures – Changing the filter **or** Descaling the machine

Perform a filter change or descale only when prompted.

Purpose: Protects against lime scale build up inside the machine maintaining water & steam paths



Std - Prod no.71137



9 pk – Prod no. 71121

36 pk – Prod no. 71122



My Coffee Shop Pty Ltd
ACN 102 850 037

390 Johnston St
Abbotsford VIC 3067
ph: 03 9946 4160

97/1-5 Harwood Street
Pyrmont NSW 2009
ph: 02 9034 6580

WE8

Daily milk system clean

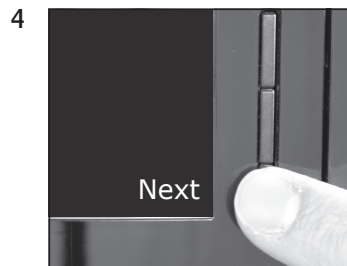
Milk system cleaner
 Prod no. 71144 OR
 Prod no. 71150



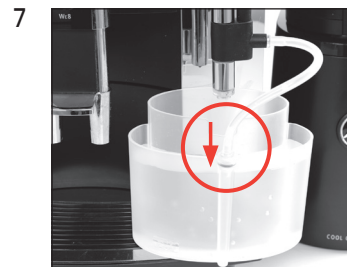
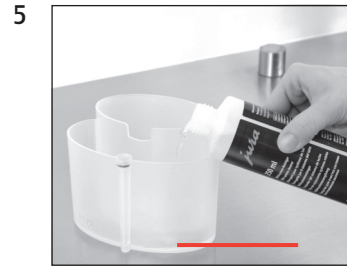
These short instructions do not replace the 'WE8 Instructions for Use'. Make sure you read and observe the safety information and warnings first in order to avoid hazards.



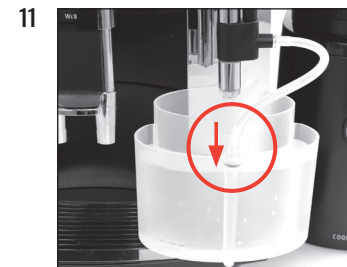
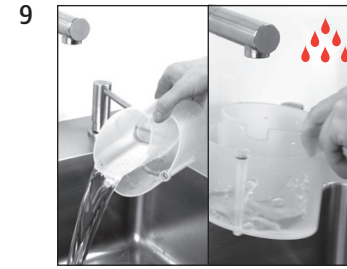
»Clean the milk system«



»Clean the milk system« /
 »Milk system cleaner«



»Milk system is being cleaned«
 »Clean the milk system« /
 »Fresh water«



»Milk system is being cleaned«

Weekly milk system clean

Complete this procedure once a week after the daily milk system clean.

1. Remove the automatic milk frother from the machine. (Fig 1 - 2)
2. Separate the automatic milk frother into 5 parts. (Fig 3)
3. Soak plastic / rubber parts in 250ml of warm water & 15ml of Cafetto red weekly solution for 20 min.
4. Remove the parts from the solution and rinse them under cold tap water.
5. Re-assemble the auto frother and refit onto the machine.

Important: Do not soak metal / chrome parts to avoid possible damage.



Figure 1



Figure 2



Figure 3



My Coffee Shop Pty Ltd
ACN 102 850 037

390 Johnston St
Abbotsford Vic 3067
ph: 03 9946 4160

97/1-5 Harwood St
Pymont NSW 2009
ph: 02 9034 6580

Coffee system clean

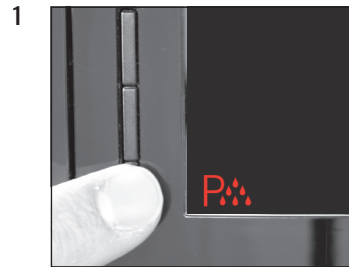
Approximate duration 20 min.

3-Phase cleaning tablets
 Prod no. 71112 25pcs
 Prod no. 71111 6pcs

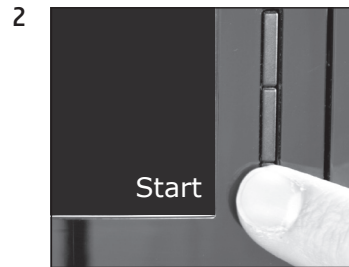


These short instructions do not replace the 'WE8 Instructions for Use'. Make sure you read and observe the safety information and warnings first in order to avoid hazards.

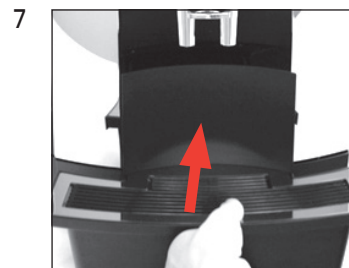
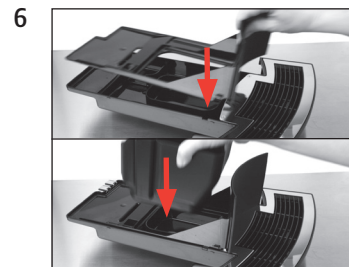
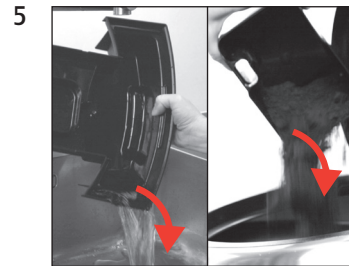
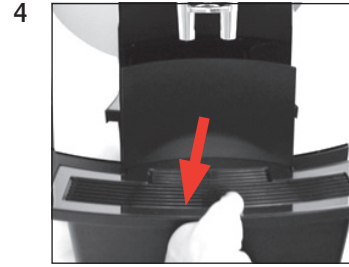
Precondition:



»Clean«



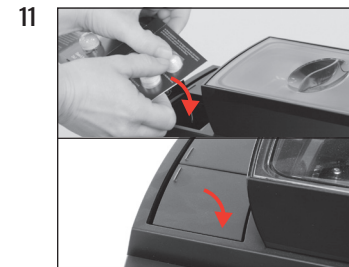
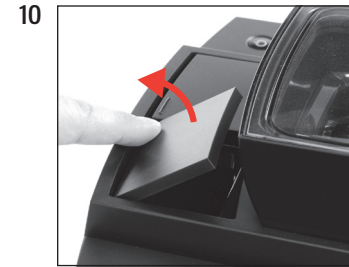
»Empty coffee grounds container«



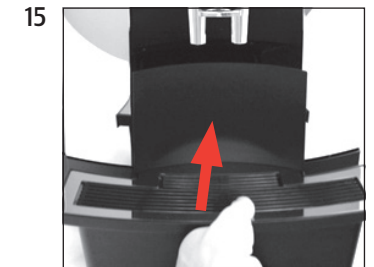
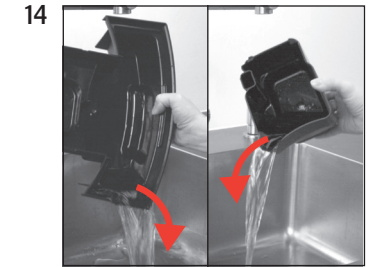
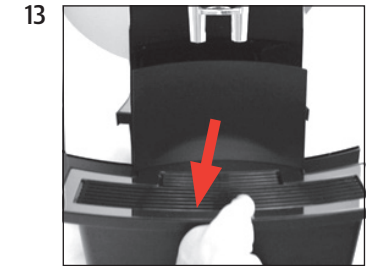
»Clean«



»Machine is being cleaned«
 »Add cleaning tablet«



»Machine is being cleaned«
 »Empty coffee grounds container«



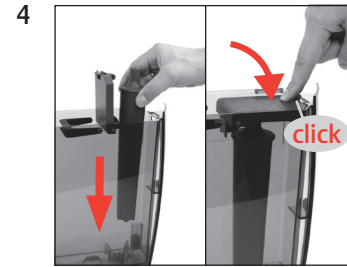
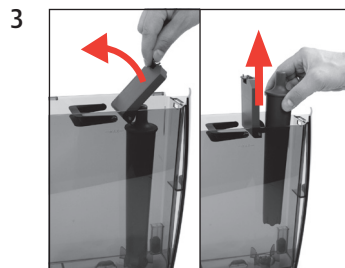
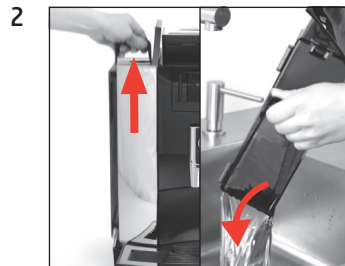
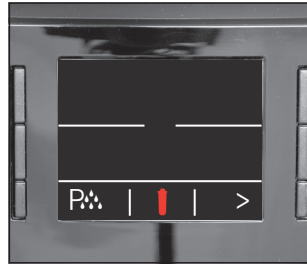
Changing the filter

Filter cartridge CLARIS Pro Smart
Prod no. 71137



These short instructions do not replace the 'WE8 Instructions for Use'. Make sure you read and observe the safety information and warnings first in order to avoid hazards.

Precondition:



»Saved«

»Filter is being rinsed«

Descaling the machine

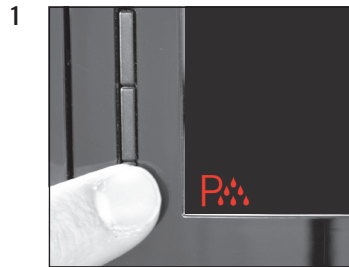
Approximate duration 40 min.

Descaling tablets
Prod no. 71122 36pcs

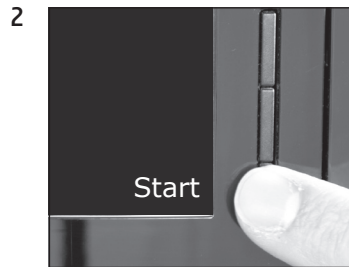


These short instructions do not replace the 'WE8 Instructions for Use'. Make sure you read and observe the safety information and warnings first in order to avoid hazards.

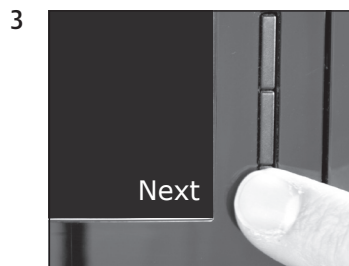
Precondition:



»Descaler«

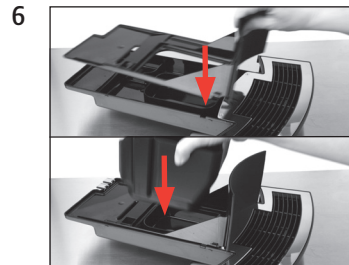
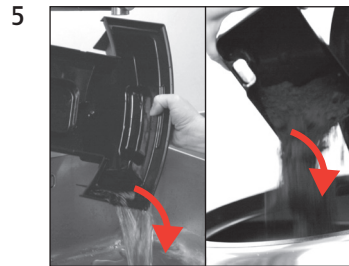
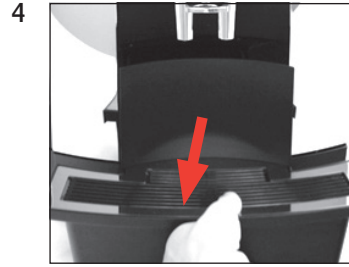


Start

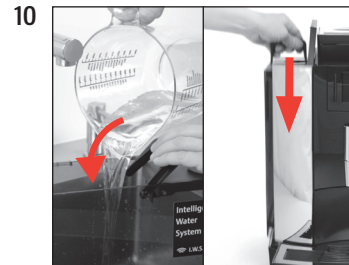
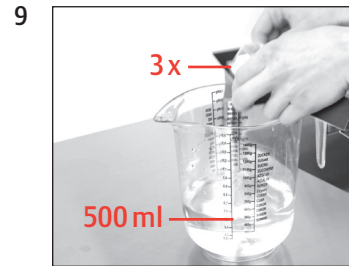
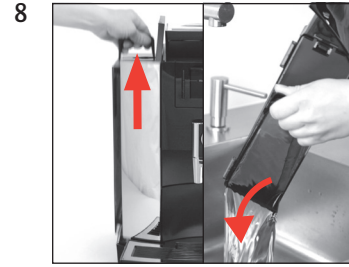
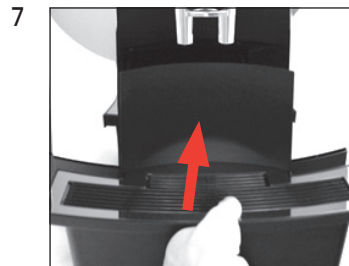


Next

»Empty drip tray«

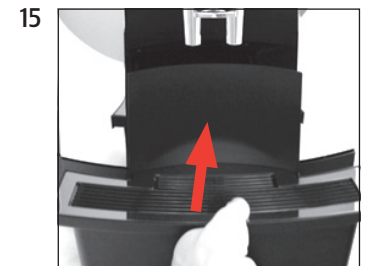
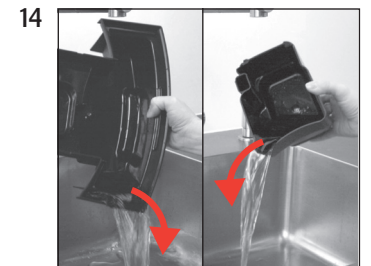
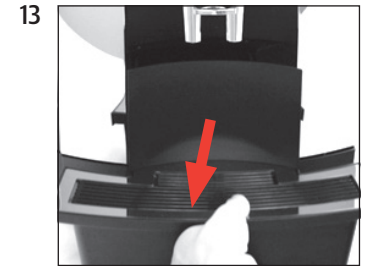


»Agent in tank«



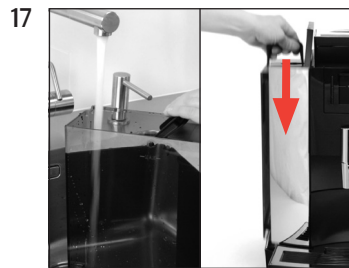
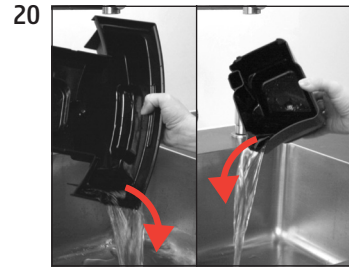
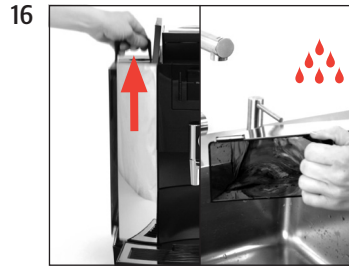
Next

Machine is being descaled«
»Empty drip tray«



»Fill water tank«





- »Machine is being descaled«
- »Machine is rinsing«
- »Empty drip tray«

Troubleshooting:

Milk flow

- No milk flow
- Milk spluttering
- Not filling cups
- Froth milk is flat & cool

Solution:

1. Remove the air suction. (Fig 1)
2. Check the valve on the tip of the air suction is clean and is able to open and close freely. Squeeze the valve between your fingers, it should open, release it and it should close. (Fig 2)
3. Refit the air suction. Turn the milk selector to the froth position (Fig 3), and test the milk. If the problem is still occurring replace the air suction and test again. If the problem has been solved, order in a spare air suction (Part no. 71866) otherwise go to step 4.
4. Remove the auto frother from the machine. (Fig 4)
5. Separate the auto frother into 5 parts. (Fig 5)
6. Soak plastic / rubber parts only in 250ml of warm water and 15 ml of Cafetto red weekly cleaner for 30 min.
7. Rinse parts under water. Clean the milk and air paths with the cleaning brush (Part no. 71161) (Fig 6 – 9)
8. Re-assemble the auto frother and refit onto the machine.
9. Test the milk. If the problem has not been solved contact customer support on 1300 365 487.

Important: Do not soak metal / chrome parts to avoid possible damage.



Figure 1



Figure 2



Figure 3 – Froth



Figure 4



Figure 5



Figure 6 - Milk



Figure 7 - Milk



Figure 8 - Air



Figure 9 - Milk



My Coffee Shop Pty Ltd
ACN 102 850 037

390 Johnston St
Abbotsford Vic 3067
ph: 03 9946 4160

97/1-5 Harwood St
Pyrmont NSW 2009
ph: 02 9034 6580

Welcome to My Coffee Shop!

Our hours of operation are Monday – Friday 9am to 5pm. Or you can visit us at your convenience on the web at www.mycoffeeshop.com.au. Orders and service requests can be placed by:

Phone: 1300 365 487
Fax: 02 9692 8046
E-mail: clientservices@mycoffeeshop.com.au
Online: www.mycoffeeshop.com.au/shop-online
Remittances: accountsreceivable@mycoffeeshop.com.au
Service enquiries: servicecentre@mycoffeeshop.com.au

Next business day delivery via courier to:

Adelaide Canberra Melbourne Sydney

for product orders placed by 1.30pm

Please note you will be advised when ordering if delivery charges apply to your order

Once again, welcome to My Coffee Shop and remember we are here to help. If you have any questions please don't hesitate to contact us.

We look forward to exceeding your expectations and making your day easier and more enjoyable.

Kind regards,

My Coffee Shop
Client Services
My Coffee Shop Pty Ltd



My Coffee Shop Pty Ltd
ACN 102 850 037

390 Johnston St
Abbotsford VIC 3067
ph: 03 9946 4160 fax:

97 / 1-5 Harwood St
Pyrmont NSW 2009
ph: 02 9034 6580