

Jura WE8

Operating & cleaning Instructions



My Coffee Shop Pty Ltd
ACN 102 850 037

390 Johnston St
Abbotsford VIC 3067
ph: 03 9946 4160


97/1-5 Harwood Street
Pymont NSW 2009
ph: 02 9034 6580

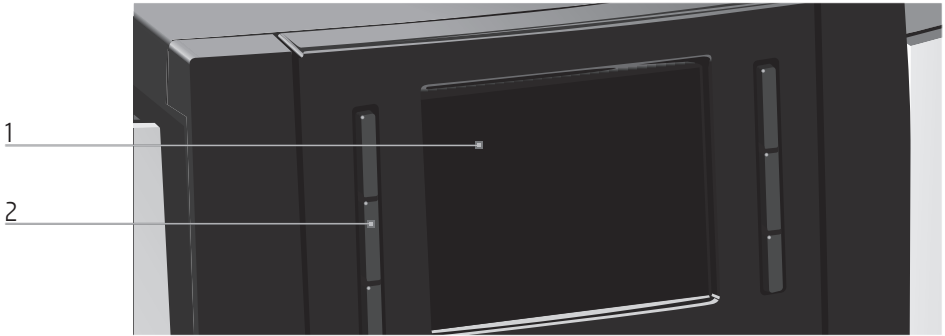
Control elements

Control elements



- 1 Filler funnel cover
- 2 Filler funnel for ground coffee
- 3 Bean container with aroma preservation cover
- 4 Water tank cover
- 5 Water tank
- 6 Plug-in mains cable (back of the machine)
- 7 Coffee grounds container
- 8 Drip tray

- 9 Cover cap for grinder adjustment switch
- 10 Grinder adjustment switch
- 11 On/Off button 
- 12 Milk system with fine foam frother
- 13 Height-adjustable coffee spout
- 14 Cup grille

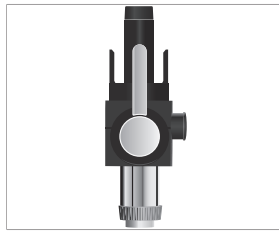


1 Display

2 Multi-function buttons (button function depends on what is shown in the display)



Service socket for optional JURA Smart Connect



Professional fine foam frother^{G2} (optional)

Accessories



Container for milk system cleaning



Measuring spoon for ground coffee



Hot-water nozzle

Cleaning Products – GIGA Gen II

Daily

See procedure – Daily milk system clean

Must be performed at the end of each day just before the machine is turned off

Purpose: To ensure the milk system is clean overnight so milk does not go off blocking the pathways



Use Cafetto daily milk cleaner 1 litre bottle (Prod no. 71144)
or Jura Milk System Cleaner Mini Tabs 180g (Prod no. 71150)

Weekly

See procedure – Weekly milk system clean

Performed once per week

Purpose: To remove any build up of milk fats to ensure the milk frother works correctly



Use Cafetto weekly milk cleaner – 1 litre bottle (Prod no. 71145)

When prompted

See procedure - Coffee system clean

Performed only when prompted (Every 200 coffees)

Purpose: Removes coffee oil from the brewing unit and coffee path to maintain the quality of the coffee



Use Jura cleaning tablets - 6 pk (Prod no. 71111)
- 25 pk (Prod no. 71112)

See procedures – Changing the filter **or** Descaling the machine

Perform a filter change or descale only when prompted.

Purpose: Protects against lime scale build up inside the machine maintaining water & steam paths



Std - Prod no.71137



9 pk – Prod no. 71121

36 pk – Prod no. 71122



My Coffee Shop Pty Ltd
ACN 102 850 037

390 Johnston St
Abbotsford VIC 3067
ph: 03 9946 4160

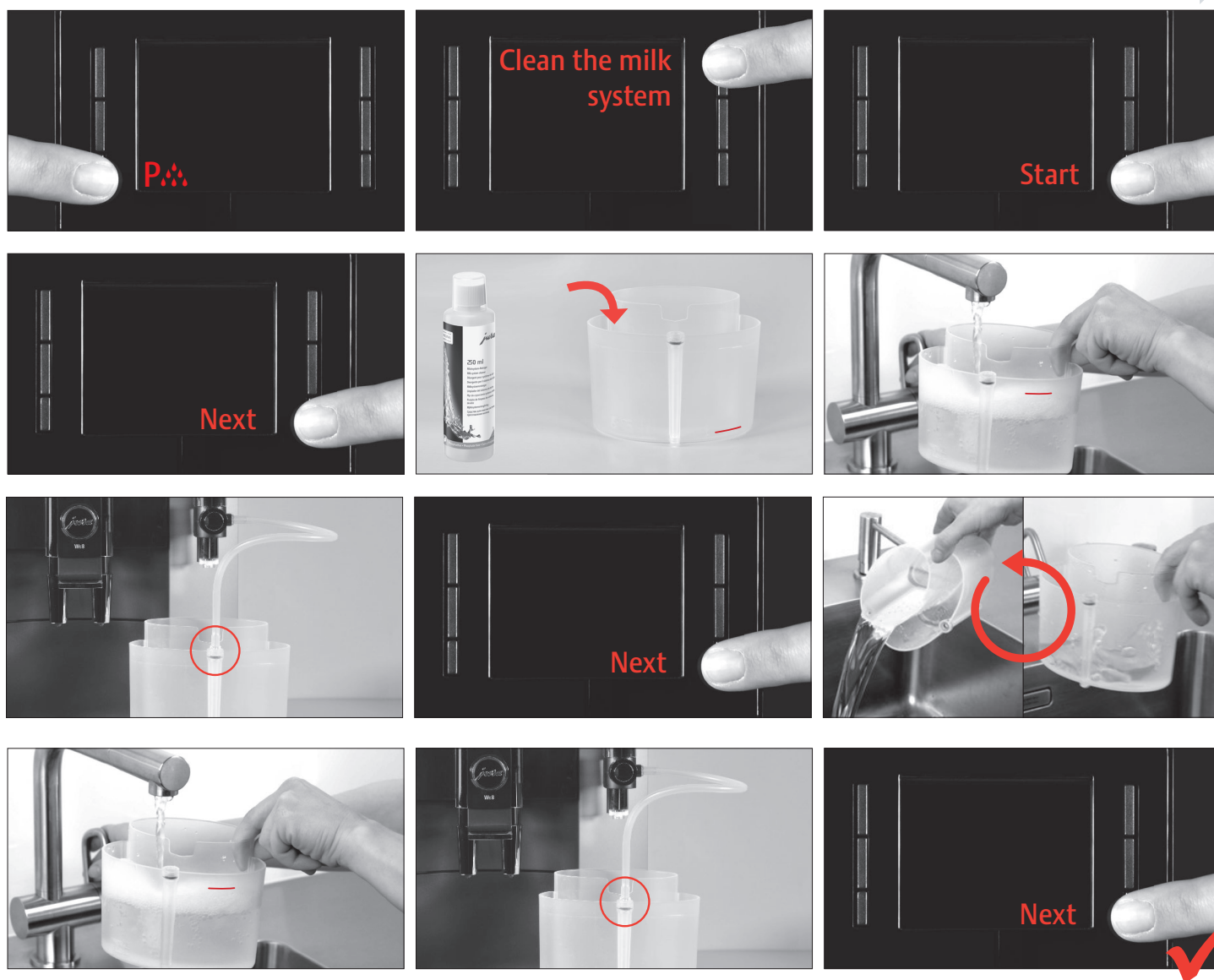
97/1-5 Harwood Street
Pymont NSW 2009
ph: 02 9034 6580

Cleaning the milk system

⚠ These short instructions do not replace the Instructions for Use. Make sure you read and observe the safety information and warnings first in order to avoid hazards.



Prod no. 71144 OR Prod no. 71150



Cleaning the machine

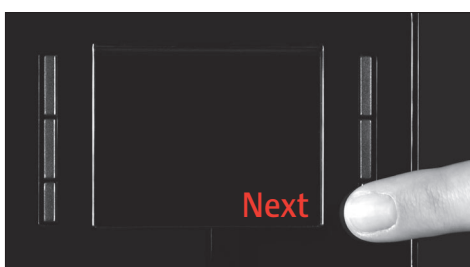
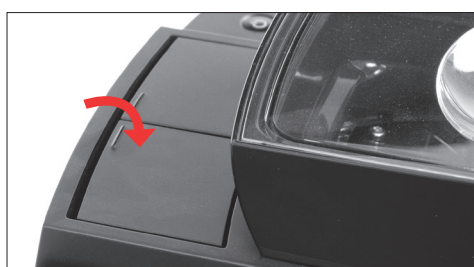
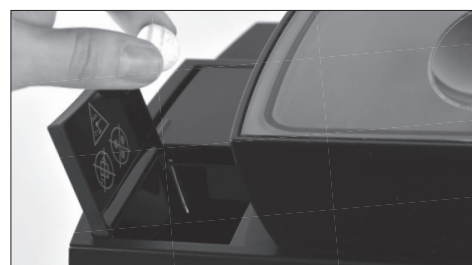
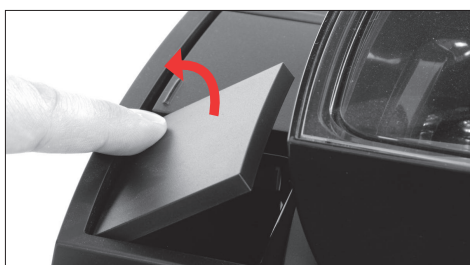
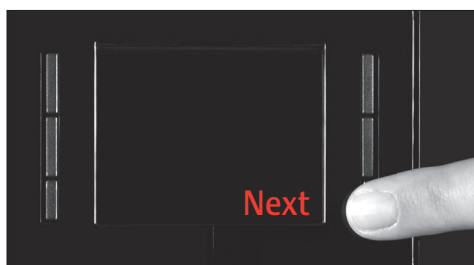
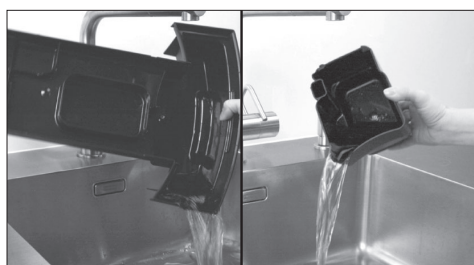
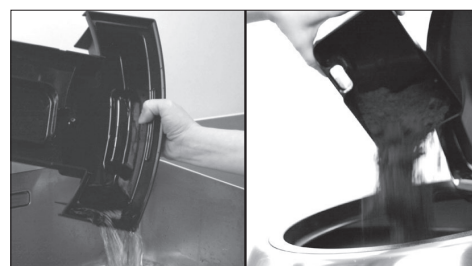
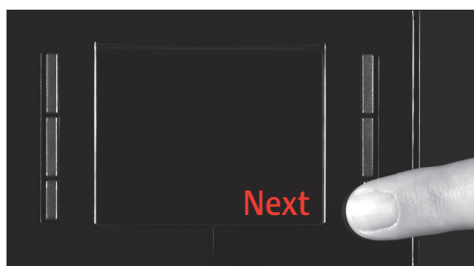
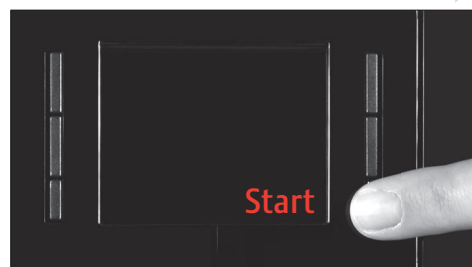
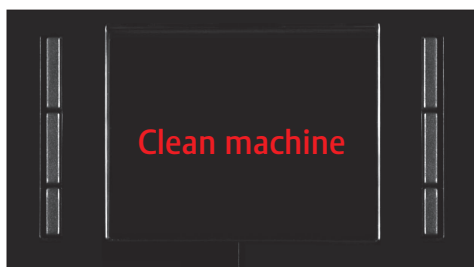
⚠ These short instructions do not replace the Instructions for Use. Make sure you read and observe the safety information and warnings first in order to avoid hazards.



3-Phase cleaning tablets
Prod no. 71112 25pcs

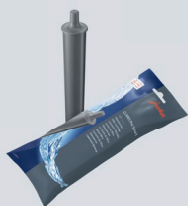


3-Phase cleaning tablets
Prod no. 71111 6pcs

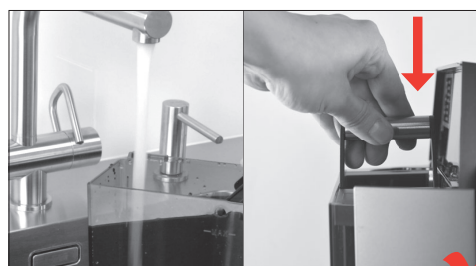
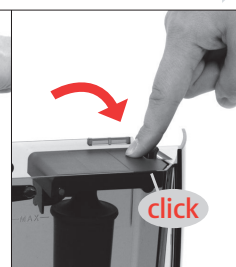
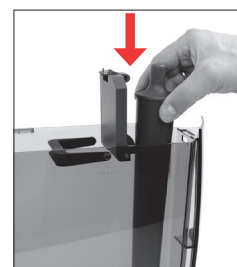
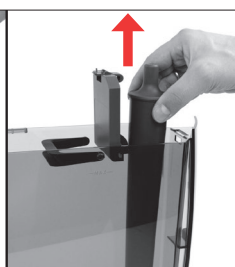
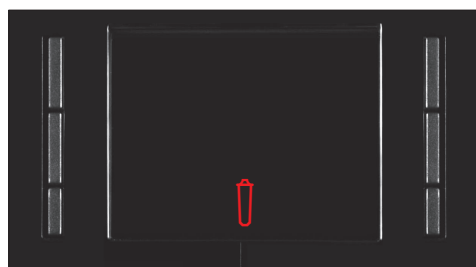


Changing the filter

⚠ These short instructions do not replace the Instructions for Use. Make sure you read and observe the safety information and warnings first in order to avoid hazards.



Filter cartridge CLARIS Pro Smart
Prod no. 71137

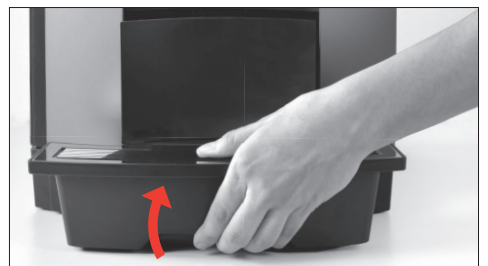
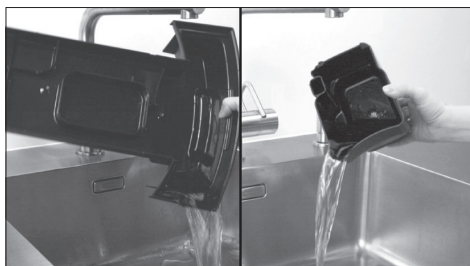
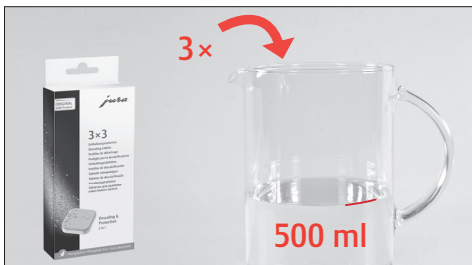
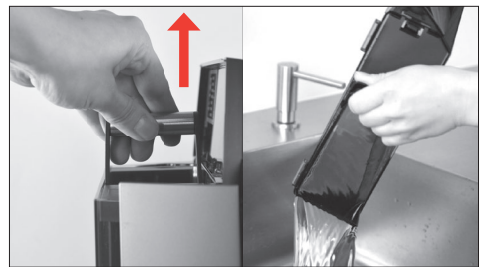
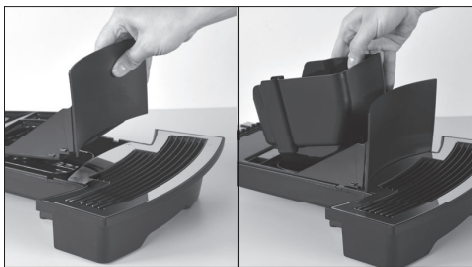
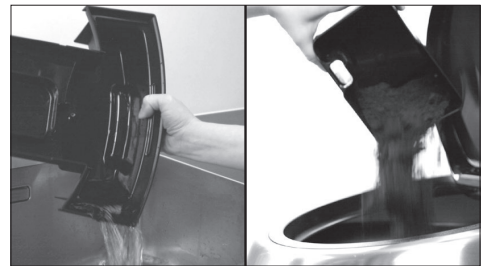
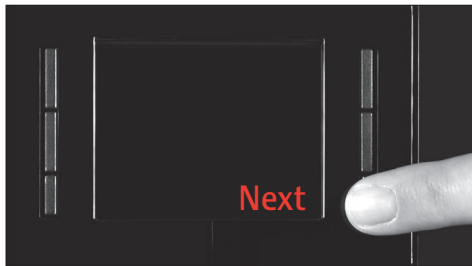
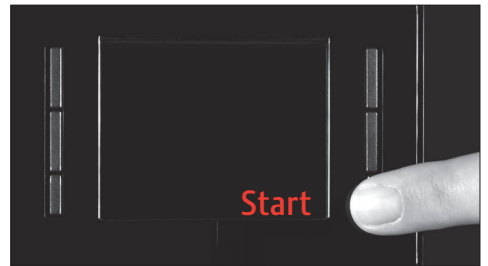
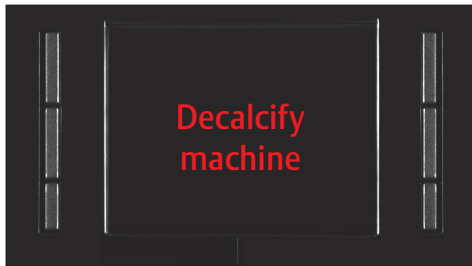


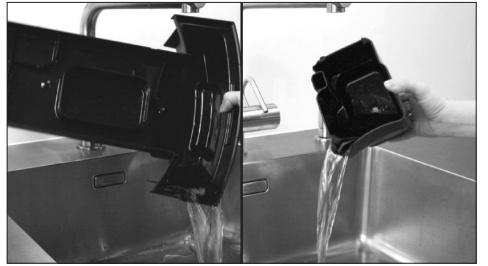
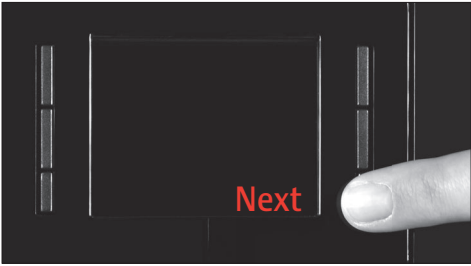
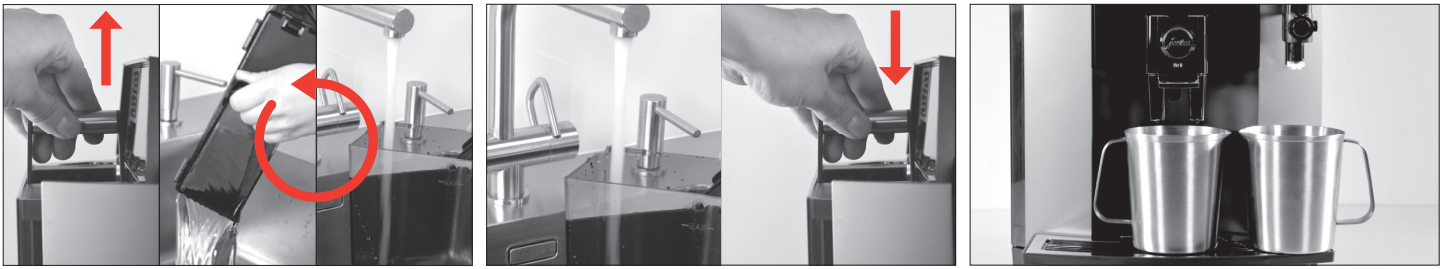
Descaling the machine

⚠ These short instructions do not replace the Instructions for Use. Make sure you read and observe the safety information and warnings first in order to avoid hazards.



Descaling tablets
Prod no. 71122 36pcs





Welcome to My Coffee Shop!

Our hours of operation are Monday – Friday 9am to 5pm. Or you can visit us at your convenience on the web at www.mycoffeeshop.com.au. Orders and service requests can be placed by:

Phone: 1300 365 487

E-mail: clientservices@mycoffeeshop.com.au

Online: www.mycoffeeshop.com.au/shop-online

Remittances: accountsreceivable@mycoffeeshop.com.au

Service enquiries: servicecentre@mycoffeeshop.com.au

Next business day delivery via courier to:

Adelaide Canberra Melbourne Sydney

for product orders placed by 1.30pm

Please note you will be advised when ordering if delivery charges apply to your order

Once again, welcome to My Coffee Shop and remember we are here to help. If you have any questions please don't hesitate to contact us.

We look forward to exceeding your expectations and making your day easier and more enjoyable.

Kind regards,

My Coffee Shop
Client Services
My Coffee Shop Pty Ltd



My Coffee Shop Pty Ltd
ACN 102 850 037

390 Johnston St
Abbotsford VIC 3067
ph: 03 9946 4160

97 / 1-5 Harwood St
Pyrmont NSW 2009
ph: 02 9034 6580