

Jura GIGA X8 Gen II

Operating & cleaning instructions



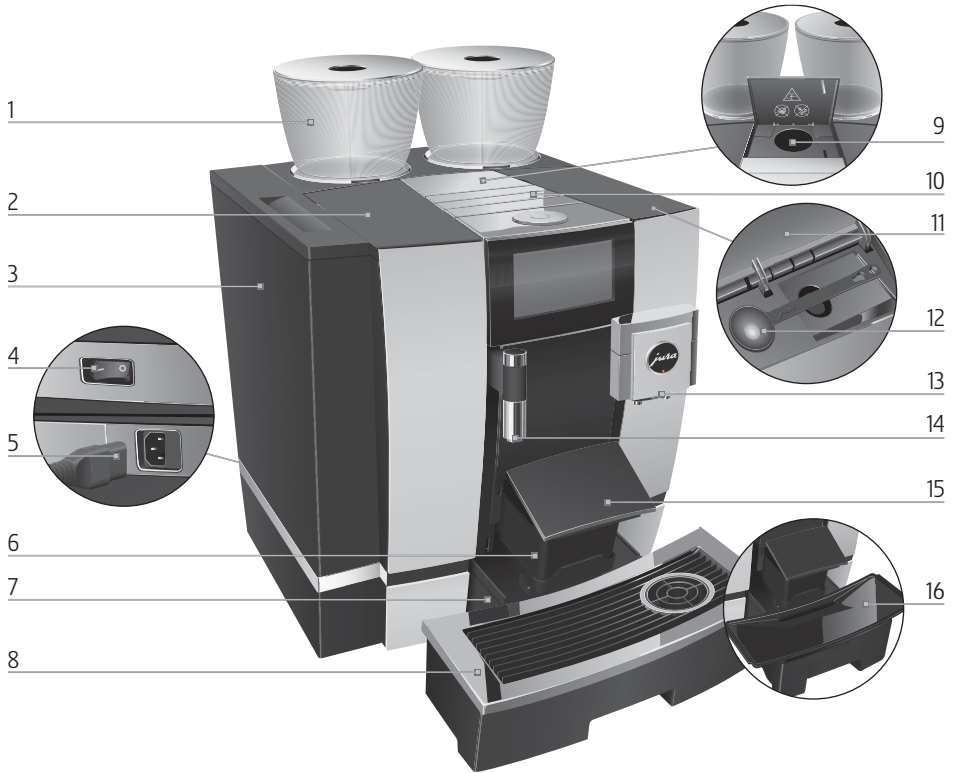
My Coffee Shop Pty Ltd
ACN 102 850 037

390 Johnston St
Abbotsford VIC 3067
ph: 03 9946 4160

97/1-5 Harwood Street
Pymont NSW 2009
ph: 02 9034 6580

Control elements

Control elements



- 1 Bean container with aroma preservation cover
- 2 Water tank cover
- 3 Water tank
- 4 Power switch (back of the machine)
- 5 Plug-in mains cable (back of the machine)
- 6 Coffee grounds container
- 7 Drip tray
- 8 Cup grille

- 9 Filler funnel for ground coffee
- 10 Ventilation slats (Venti Ports)
- 11 Storage compartment cover
- 12 Measuring spoon for ground coffee
- 13 Height-adjustable dual spout
- 14 Height-adjustable hot-water spout
- 15 Coffee grounds container cover (pivoting)
- 16 Insert for drip tray



1 Rotary Switch

2 On/Off button  (under cover)

3 Touchscreen display



Back of the machine

1 Service cover
(open by pressing with your finger)

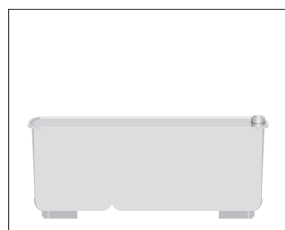
2 Locking device

3 Sliding catch

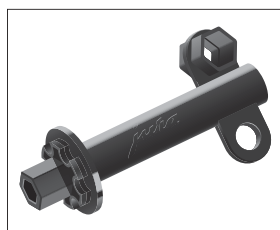
4 Service socket with JURA Smart Connect

Accessories

Container for milk system cleaning



Spanner with hexagonal hole (for milk system)



Cleaning Products – Jura GIGA X8 Gen II

Daily

See procedure – Daily milk system clean

Must be performed at the end of each day just before the machine is turned off

Purpose: To ensure the milk system is clean overnight so milk does not go off blocking the pathways



Use Cafetto daily milk cleaner 1 litre bottle (Prod no. 71144)
or Jura Milk System Cleaner Mini Tabs 180g (Prod no. 71150)

Weekly

See procedure – Weekly milk system clean

Performed once per week

Purpose: To remove any build up of milk fats to ensure the milk frother works correctly



Use Cafetto weekly milk cleaner – 1 litre bottle (Prod no. 71145)

When prompted

See procedure - Coffee system clean

Performed only when prompted (Every 200 coffees)

Purpose: Removes coffee oil from the brewing unit and coffee path to maintain the quality of the coffee



Use Jura cleaning tablets - 6 pk (Prod no. 71111)
- 25 pk (Prod no. 71112)

See procedures – Changing the filter **or** Descaling the machine

Perform a filter change or descale only when prompted.

Purpose: Protects against lime scale build up inside the machine maintaining water & steam paths



Std - Prod no.71137
Maxi - Prod no. 71138



9 pk – Prod no. 71121
36 pk – Prod no. 71122



My Coffee Shop Pty Ltd
ACN 102 850 037

390 Johnston St
Abbotsford VIC 3067
ph: 03 9946 4160

97/1-5 Harwood Street
Pymont NSW 2009
ph: 02 9034 6580

GIGA X8c/X8

Cleaning the milk system

Equipment required:
Milk system cleaner 1000 ml bottle (Prod no 71144)



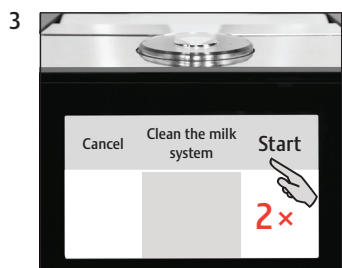
These short instructions do not replace the 'GIGA X8c/X8 Instructions for Use'. Make sure you read and observe the safety information and warnings first in order to avoid hazards.

'Display'

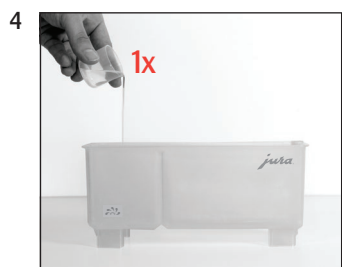
Precondition: 'Clean the milk system'



'Clean the milk system'



'Milk system cleaner (15ml)' / 'Con-nect the milk tube'



'Milk system is being cleaned'

'Milk system cleaning complete'

GIGA X8c/X8

Cleaning the machine

Approximate duration 20 min.

Equipment required:
3-phase-cleaning tablets
Box containing 25 pcs (Prod 71112)



Pack containing 6 pcs (Prod 71111)



These short instructions do not replace the 'GIGA X8c/X8 Instructions for Use'. Make sure you read and observe the safety information and warnings first in order to avoid hazards.

'Display'

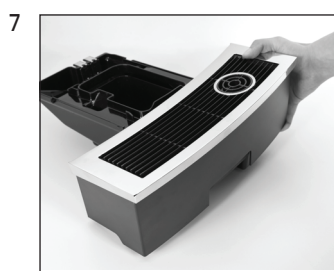
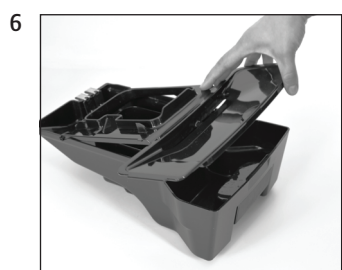
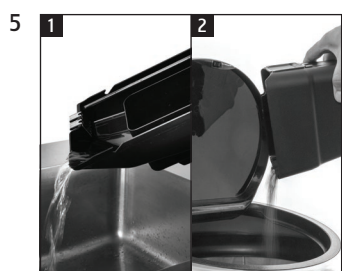
Precondition: 'Clean machine'



'Clean'



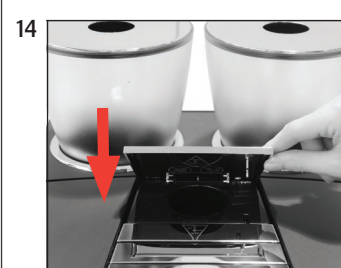
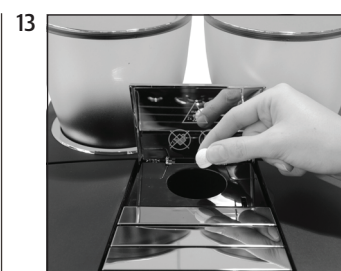
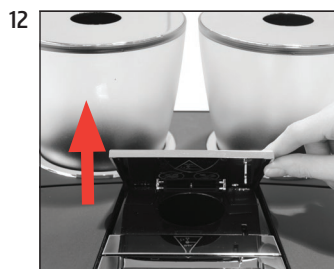
'Empty coffee grounds container'



'Press the Rotary Switch'



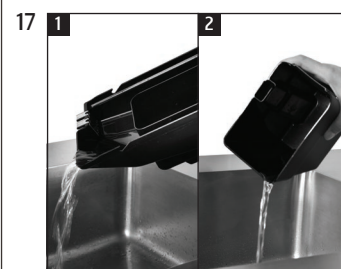
'Machine is being cleaned'
'Add cleaning tablet'



'Press the Rotary Switch'



'Machine is being cleaned'
'Empty coffee grounds container'



'Clean' / 'Cleaning complete.'

GIGA X8

Changing the filter

Equipment required:

Claris Pro Smart filter

(Prod no. 71137)

Claris Pro Smart Maxi filter

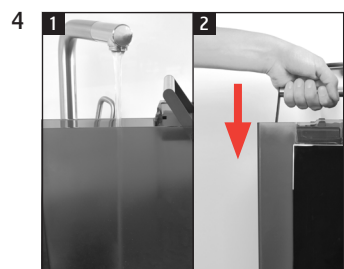
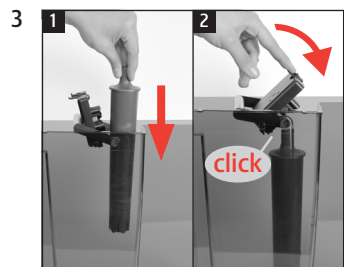
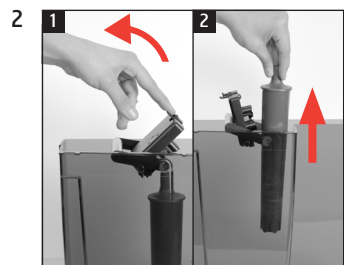
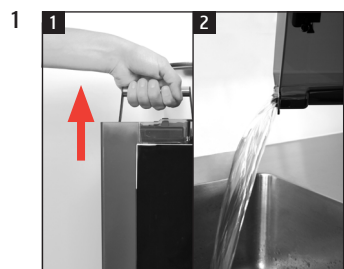
(Prod no. 71138)



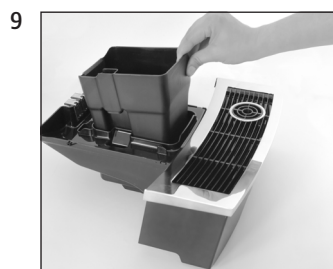
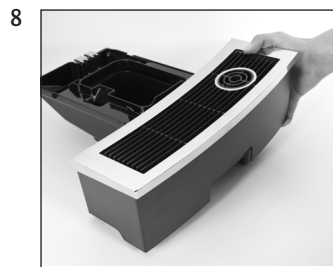
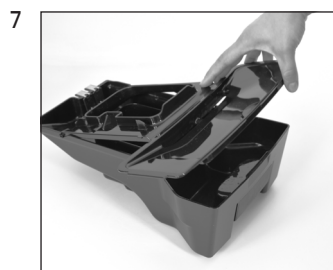
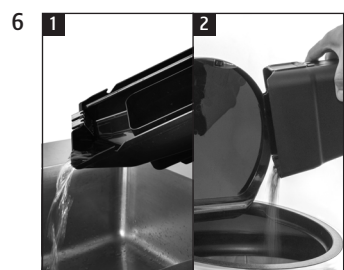
These short instructions do not replace the 'GIGA X8 Instructions for Use'. Make sure you read and observe the safety information and warnings first in order to avoid hazards.

'Display'

Precondition: 'Change the filter'



'Filter operation' / 'Saved'
'Filter is being rinsed'
'Empty drip tray.'



'Filter operation' / 'Filter rinsing complete'

GIGA X8

Descaling the machine

Approximate duration 45 min.

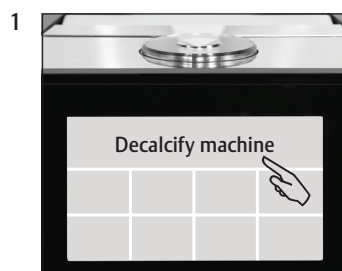
Equipment required:
 Descaling tablets
 Box containing 36 pcs (Prod 71122)



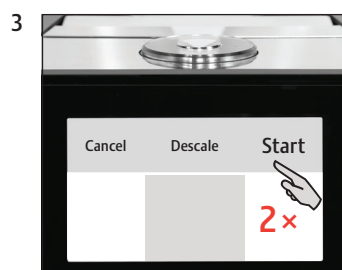
These short instructions do not replace the »GIGA X8 Instructions for Use«. Make sure you read and observe the safety information and warnings first in order to avoid hazards.

'Display'

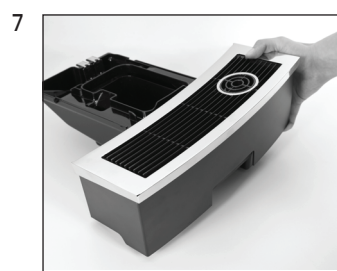
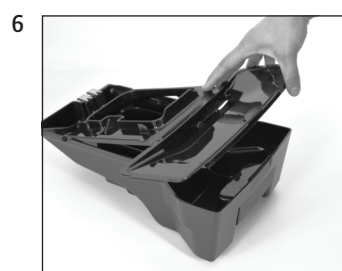
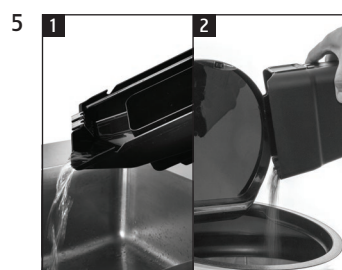
Precondition: 'Decalcify machine'



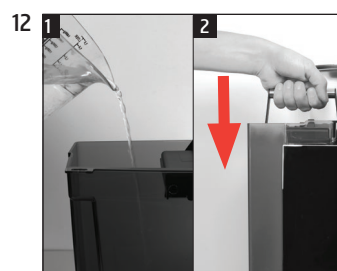
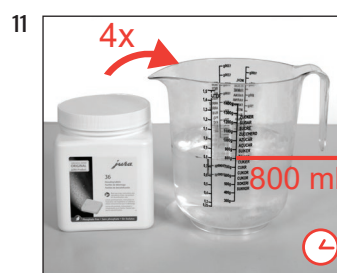
'Descale'



'Empty drip tray'



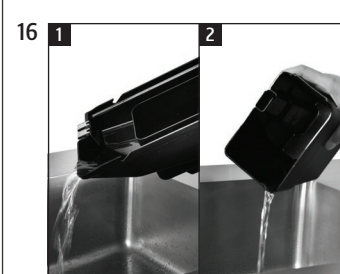
'Pour descaling agent into water tank'



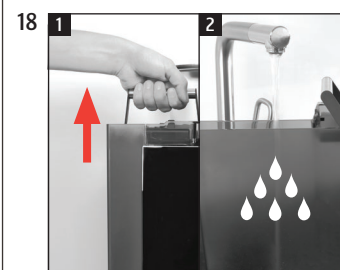
'Press the Rotary Switch'

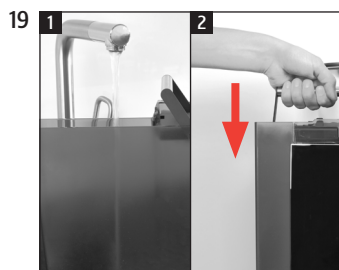


'Machine is being descaled'
 'Empty drip tray'



'Fill water tank'

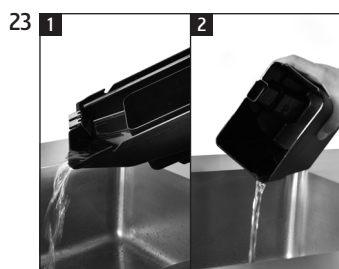




'Press the Rotary Switch'



'Machine is being descaled'
'Empty drip tray'



'Descal' / 'Descaling
complete.'

Welcome to My Coffee Shop!

Our hours of operation are Monday – Friday 9am to 5pm. Or you can visit us at your convenience on the web at www.mycoffeeshop.com.au. Orders and service requests can be placed by:

Phone: 1300 365 487
Fax: 02 9692 8046
E-mail: clientservices@mycoffeeshop.com.au
Online: www.mycoffeeshop.com.au/shop-online
Remittances: accountsreceivable@mycoffeeshop.com.au
Service enquiries: servicecentre@mycoffeeshop.com.au

Next business day delivery via courier to:

Adelaide Canberra Melbourne Sydney

for product orders placed by 1.30pm

Please note you will be advised when ordering if delivery charges apply to your order

Once again, welcome to My Coffee Shop and remember we are here to help. If you have any questions please don't hesitate to contact us.

We look forward to exceeding your expectations and making your day easier and more enjoyable.

Kind regards,

My Coffee Shop
Client Services
My Coffee Shop Pty Ltd



My Coffee Shop Pty Ltd
ACN 102 850 037

390 Johnston St
Abbotsford VIC 3068
ph: 03 9946 4160

97 / 1-5 Harwood St
Pyrmont NSW 2009
ph: 02 9034 6580