

# Jura GIGA X8C Gen II

## Operating & cleaning instructions



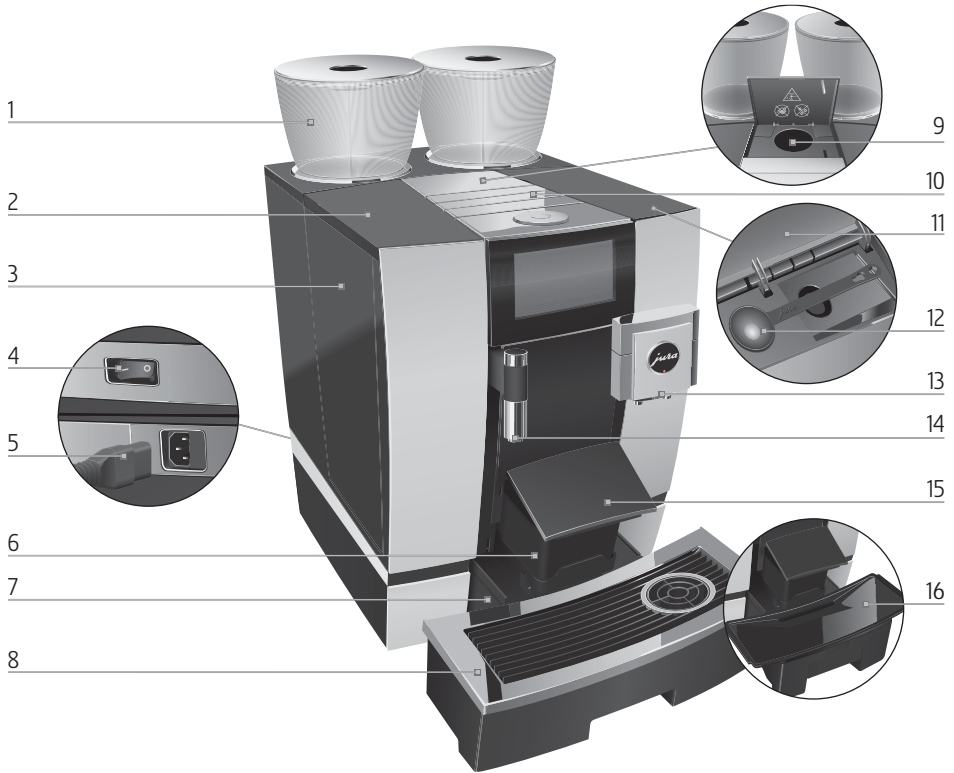
My Coffee Shop Pty Ltd  
ACN 102 850 037

390 Johnston St  
Abbotsford VIC 3067  
ph: 03 9946 4160

97/1-5 Harwood Street  
Pymont NSW 2009  
ph: 02 9034 6580

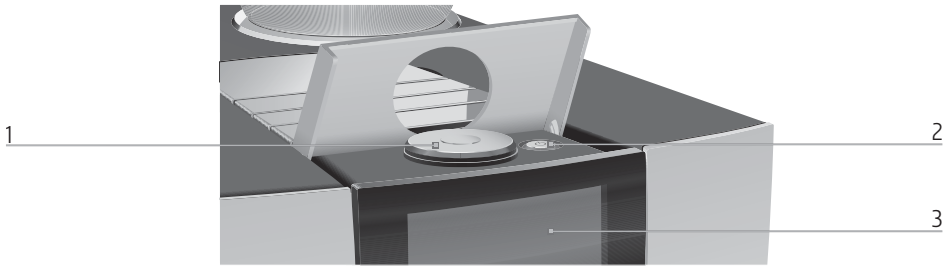
Control elements

# Control elements



- 1 Bean container with aroma preservation cover
- 2 Water tank cover
- 3 Water tank
- 4 Power switch (back of the machine)
- 5 Plug-in mains cable (back of the machine)
- 6 Coffee grounds container
- 7 Drip tray
- 8 Cup grille

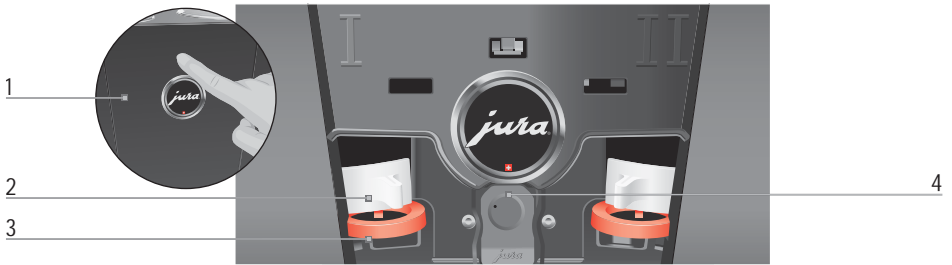
- 9 Filler funnel for ground coffee
- 10 Ventilation slats (Venti Ports)
- 11 Storage compartment cover
- 12 Measuring spoon for ground coffee
- 13 Height-adjustable dual spout
- 14 Height-adjustable hot-water spout
- 15 Coffee grounds container cover (pivoting)
- 16 Insert for drip tray



1 Rotary Switch

2 On/Off button  (under cover)

3 Touchscreen display



**Back of the machine**

1 Service cover  
(open by pressing with your finger)

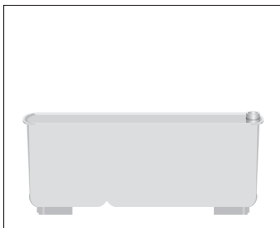
2 Locking device

3 Sliding catch

4 Service socket with JURA Smart Connect

**Accessories**

Container for milk system cleaning



Spanner with hexagonal hole (for milk system)



# Cleaning Products – GIGA (Filtered mains water)

## Daily

See procedure – Daily milk system clean

Must be performed at the end of each day just before the machine is turned off

Purpose: To ensure the milk system is clean overnight so milk does not go off blocking the pathways



Use Cafetto daily milk cleaner 1 litre bottle (Prod no. 71144)  
or Jura Milk System Cleaner Mini Tabs 180g (Prod no. 71150)

## Weekly

See procedure – Weekly milk system clean

Performed once per week

Purpose: To remove any build up of milk fats to ensure the milk frother works correctly



Use Cafetto weekly milk cleaner – 1 litre bottle (Prod no. 71145)

## When prompted

Clean machine – See procedure (Coffee system clean)

Performed only when prompted (Every 220 coffees)

Purpose: Removes coffee oil from the brewing unit and coffee path to maintain the quality of the coffee



Use Jura cleaning tablets - 6 pk (Prod no. 71111)  
- 25 pk (Prod no. 71112)

Change the filter – Contact service on 1300 365 487

Performed when prompted by the machine, based on water volume, or during regular service

Purpose: Protects against lime scale build up inside the machine maintaining water & steam paths



BWT Mains water filter  
Prod no. BWT Filter (V)



My Coffee Shop Pty Ltd  
ACN 102 850 037

390 Johnston St  
Abbotsford VIC 3146  
ph: 03 9946 4160

97/1-5 Harwood St  
Pyrmont NSW 2009  
ph: 02 9034 6580

# GIGA X8c/X8

## Cleaning the milk system



Prod no. 71144 OR Prod no. 71150

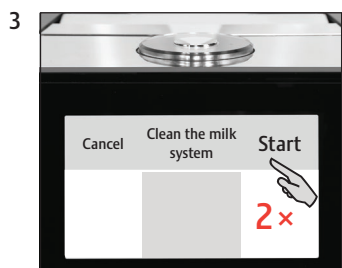
**⚠**  
 These short instructions do not replace the 'GIGA X8c/X8 Instructions for Use'. Make sure you read and observe the safety information and warnings first in order to avoid hazards.

### 'Display'

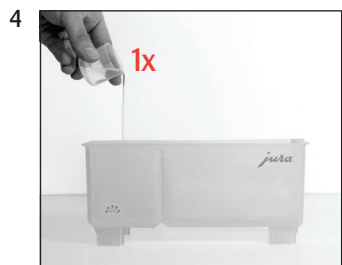
Precondition: 'Clean the milk system'



'Clean the milk system'



'Milk system cleaner' / 'Connect the milk tube'



'Milk system is being cleaned'

'Milk system cleaning complete'

# GIGA X8c/X8

## Cleaning the machine

Approximate duration 20 min.

Equipment required:  
3-phase-cleaning tablets  
Box containing 25 pcs (Prod 71112)



Pack containing 6 pcs (Prod 71111)



These short instructions do not replace the 'GIGA X8c/X8 Instructions for Use'. Make sure you read and observe the safety information and warnings first in order to avoid hazards.

### 'Display'

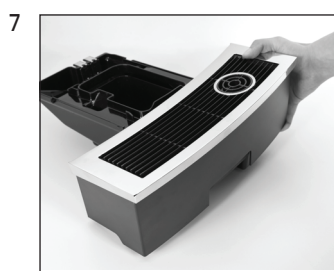
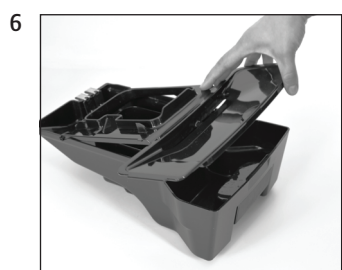
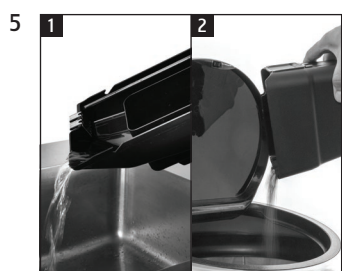
Precondition: 'Clean machine'



'Clean'



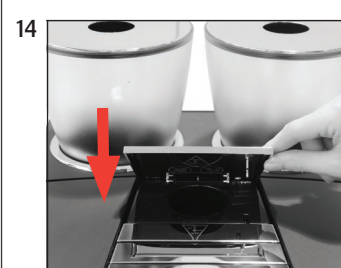
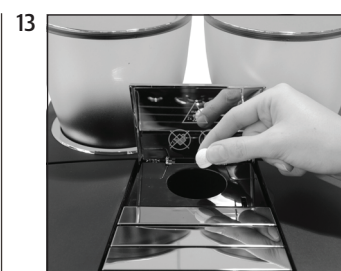
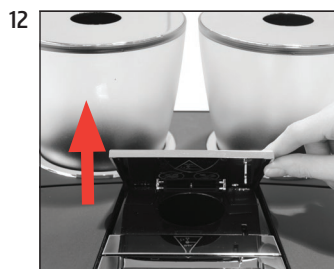
'Empty coffee grounds container'



'Press the Rotary Switch'



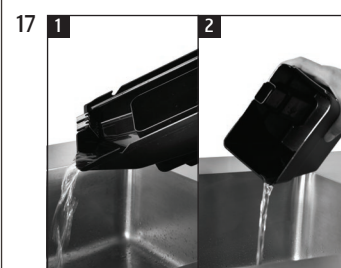
'Machine is being cleaned'  
'Add cleaning tablet'



'Press the Rotary Switch'



'Machine is being cleaned'  
'Empty coffee grounds container'



'Clean' / 'Cleaning complete.'

# GIGA X8c

## Descaling the machine

Approximate duration 45 min.

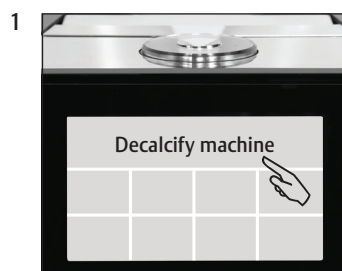
Equipment required:  
 Descaling tablets  
 Box containing 36 pcs (Prod. 71122)



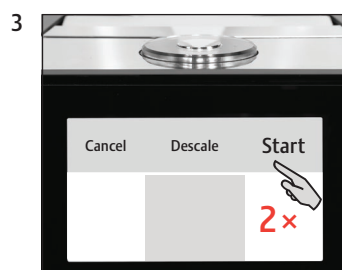
These short instructions do not replace the »GIGA X8c Instructions for Use«. Make sure you read and observe the safety information and warnings first in order to avoid hazards.

»Display«

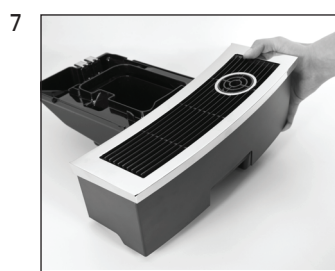
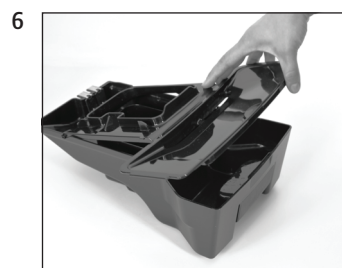
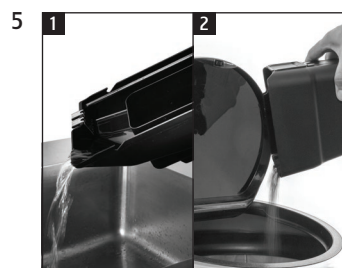
Precondition: 'Decalcify machine'



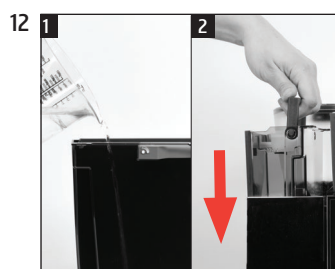
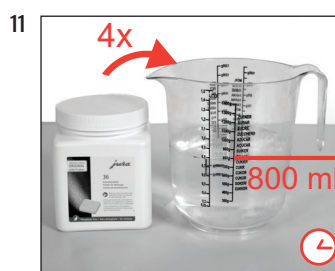
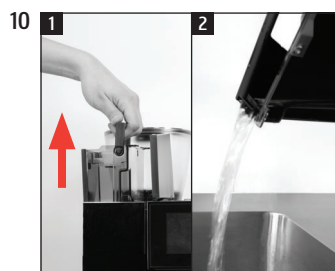
'Descale'



'Empty drip tray'



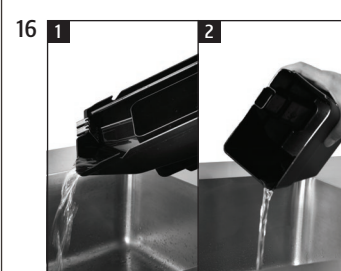
'Pour descaling agent into water tank'



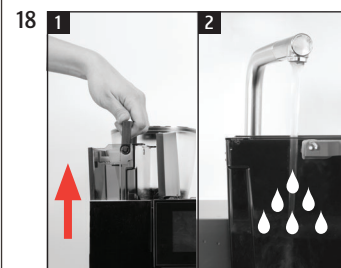
'Press the Rotary Switch'

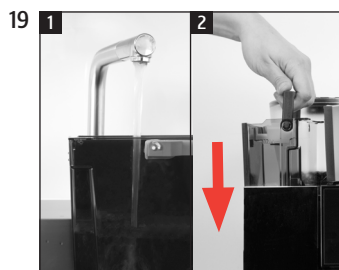


'Machine is being descaled'  
 'Empty drip tray'



'Fill water tank'

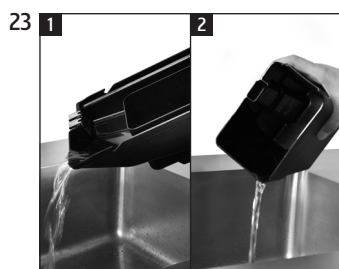




'Press the Rotary Switch'



'Machine is being descaled'  
'Empty drip tray'



'Descal' / 'Descaling  
complete.'



## Welcome to My Coffee Shop!

Our hours of operation are Monday – Friday 9am to 5pm. Or you can visit us at your convenience on the web at [www.mycoffeeshop.com.au](http://www.mycoffeeshop.com.au). Orders and service requests can be placed by:

Phone: 1300 365 487  
Fax: 02 9692 8046  
E-mail: [clientservices@mycoffeeshop.com.au](mailto:clientservices@mycoffeeshop.com.au)  
Online: [www.mycoffeeshop.com.au/shop-online](http://www.mycoffeeshop.com.au/shop-online)  
Remittances: [accountsreceivable@mycoffeeshop.com.au](mailto:accountsreceivable@mycoffeeshop.com.au)  
Service enquiries: [servicecentre@mycoffeeshop.com.au](mailto:servicecentre@mycoffeeshop.com.au)

**Next business day delivery** via courier to:

Adelaide Canberra Melbourne Sydney

**for product orders placed by 1.30pm**

Please note you will be advised when ordering if delivery charges apply to your order

Once again, welcome to My Coffee Shop and remember we are here to help. If you have any questions please don't hesitate to contact us.

We look forward to exceeding your expectations and making your day easier and more enjoyable.

Kind regards,

**My Coffee Shop**  
Client Services  
My Coffee Shop Pty Ltd



My Coffee Shop Pty Ltd  
ACN 102 850 037

390 Johnston St  
Abbotsford VIC 3067  
Ph: 03 9946 4160

97 / 1-5 Harwood St  
Pyrmont NSW 2009  
ph: 02 9034 6580