

Jura GIGA X3 Gen II

Operating & cleaning instructions

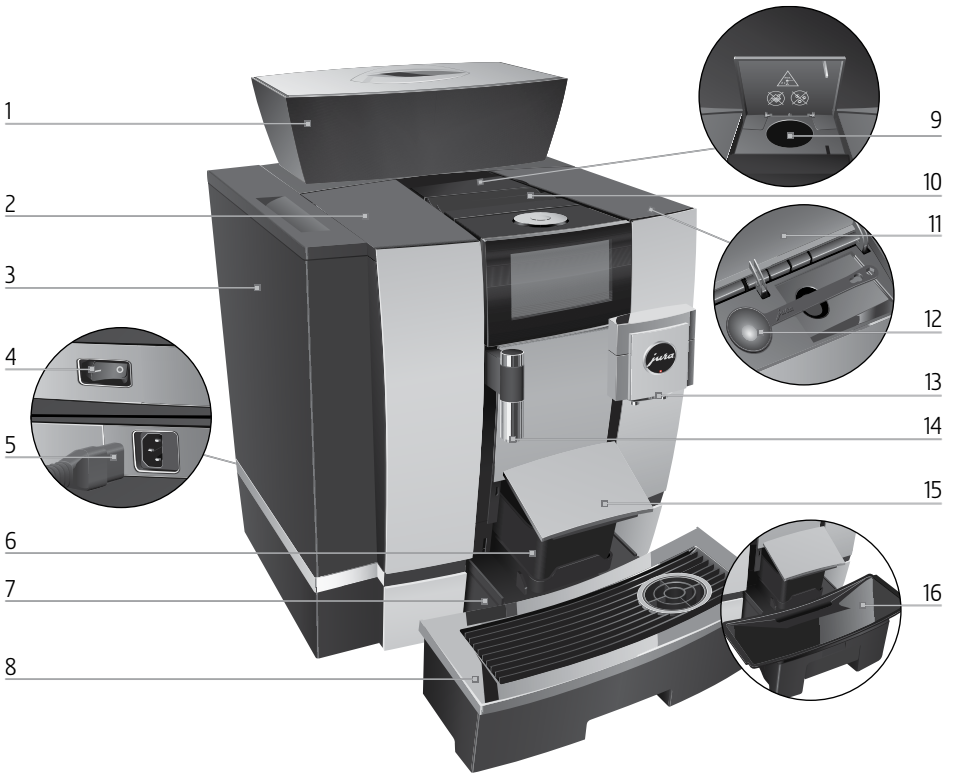


My Coffee Shop Pty Ltd
ACN 102 850 037

390 Johnston St
Abbotsford VIC 3067
ph: 03 9946 4160

97/1-5 Harwood Street
Pymont NSW 2009
ph: 02 9034 6580

Control elements



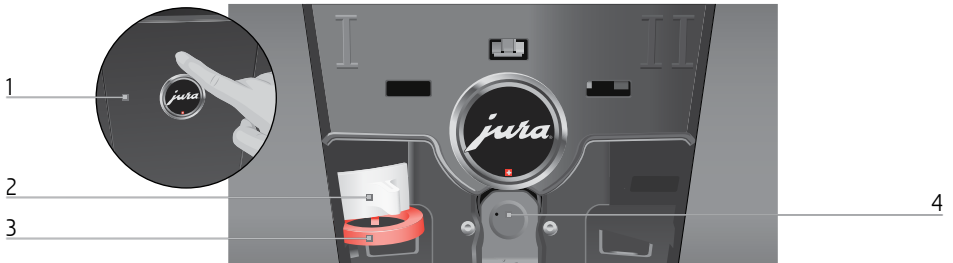
- | | | | |
|---|--|----|-----------------------------------|
| 1 | Bean container with aroma preservation cover | 9 | Filler funnel for ground coffee |
| 2 | Water tank cover | 10 | Ventilation slats (Venti Ports) |
| 3 | Water tank | 11 | Storage compartment cover |
| 4 | Power switch (back of the machine) | 12 | Measuring spoon for ground coffee |
| 5 | Plug-in mains cable (back of the machine) | 13 | Height-adjustable dual spout |
| 6 | Coffee grounds container | 14 | Height-adjustable hot-water spout |
| 7 | Drip tray | 15 | Drip tray cover (pivoting) |
| 8 | Cup grille | 16 | Insert for drip tray |



1 Rotary Switch

2 On/Off button  (under cover)

3 Touchscreen display



Back of the machine

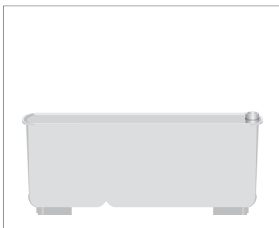
1 Service cover (open by pressing with your finger)

2 Locking device

3 Sliding catch

4 Service socket with JURA Smart Connect

Accessories



Container for milk system cleaning



Spanner with hexagonal hole (for milk system)

Cleaning Products – Jura GIGA X3 Gen II

Daily

See procedure – Daily milk system clean

Must be performed at the end of each day just before the machine is turned off

Purpose: To ensure the milk system is clean overnight so milk does not go off blocking the pathways



Use Cafetto daily milk cleaner 1 litre bottle (Prod no. 71144)
or Jura Milk System Cleaner Mini Tabs 180g (Prod no. 71150)

Weekly

See procedure – Weekly milk system clean

Performed once per week

Purpose: To remove any build up of milk fats to ensure the milk frother works correctly



Use Cafetto weekly milk cleaner – 1 litre bottle (Prod no. 71145)

When prompted

See procedure - Coffee system clean

Performed only when prompted (Every 200 coffees)

Purpose: Removes coffee oil from the brewing unit and coffee path to maintain the quality of the coffee



Use Jura cleaning tablets - 6 pk (Prod no. 71111)
- 25 pk (Prod no. 71112)

See procedures – Changing the filter **or** Descaling the machine

Perform a filter change or descale only when prompted.

Purpose: Protects against lime scale build up inside the machine maintaining water & steam paths



Std - Prod no.71137
Maxi - Prod no. 71138



9 pk – Prod no. 71121
36 pk – Prod no. 71122



My Coffee Shop Pty Ltd
ACN 102 850 037

390 Johnston St
Abbotsford VIC 3067
ph: 03 9946 4160

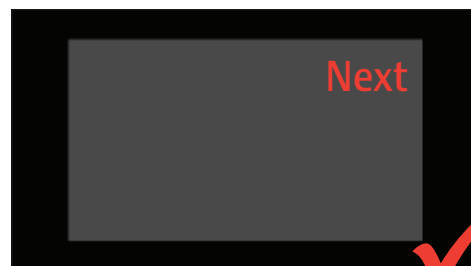
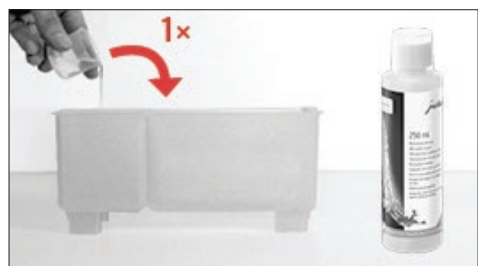
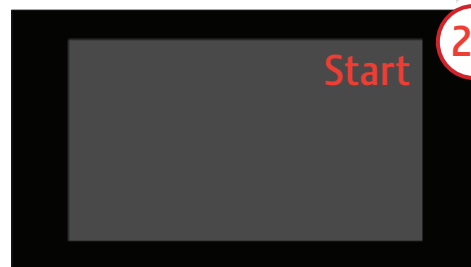
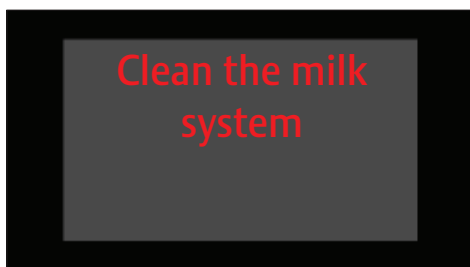
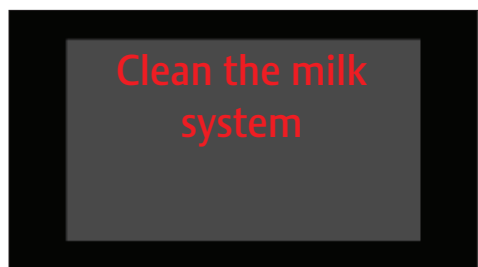
97/1-5 Harwood Street
Pymont NSW 2009
ph: 02 9034 6580

Daily milk system clean

⚠ These short instructions do not replace the Instructions for Use. Make sure you read and observe the safety information and warnings first in order to avoid hazards.

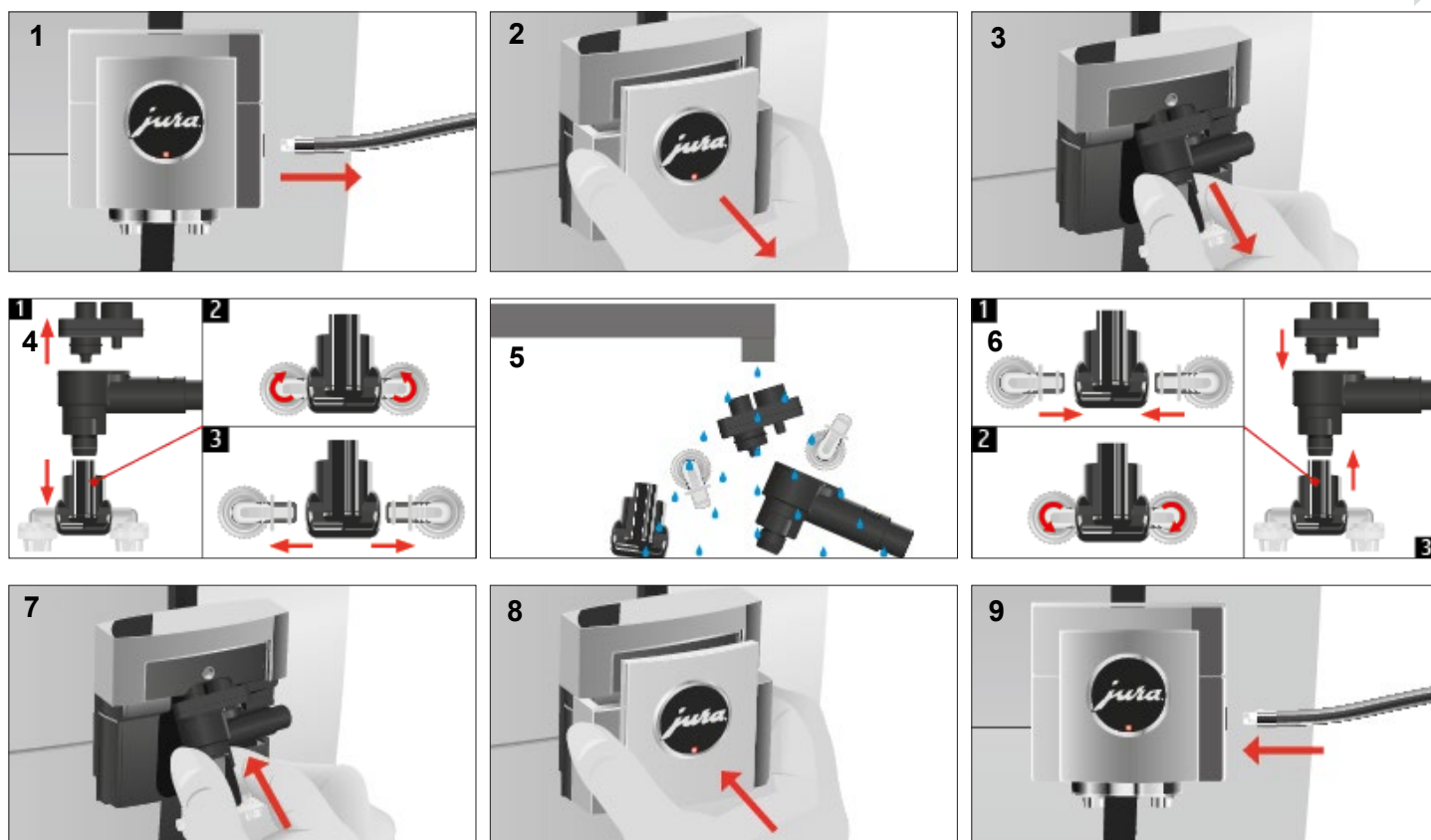


Prod no. 71144 OR Prod no. 71150



Weekly milk system clean

⚠ These short instructions do not replace the Instructions for Use. Make sure you read and observe the safety information and warnings first in order to avoid hazards.



Procedure



Prod no. 71145

1. Remove milk tube (Fig 1)
2. Remove milk frother cover (Fig 2)
3. Remove milk frother (Fig 3)
4. Dismantle milk frother (Fig 4)
5. Soak frother parts and milk tube in 250ml of cold water (not hot) & 15ml weekly milk cleaner for 30min
6. Rinse frother parts and milk tube under cold running water (Fig 5)
7. Re-assemble milk frother (Fig 6)
8. Fit milk frother onto coffee machine (Fig 7)
9. Replace cover and insert milk tube (Fig 8 - 9)

Coffee system clean

⚠ These short instructions do not replace the Instructions for Use. Make sure you read and observe the safety information and warnings first in order to avoid hazards.



3-phase cleaning tablets
Prod no. 71112 25pcs



3-phase cleaning tablets
Prod no. 71111 6pcs

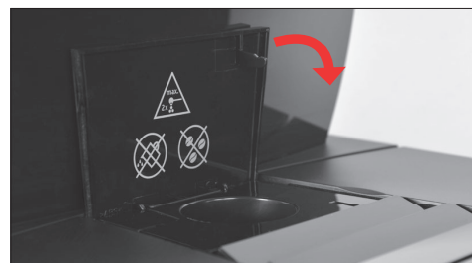
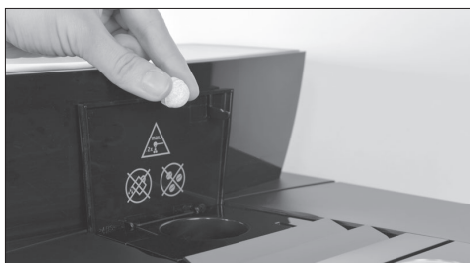
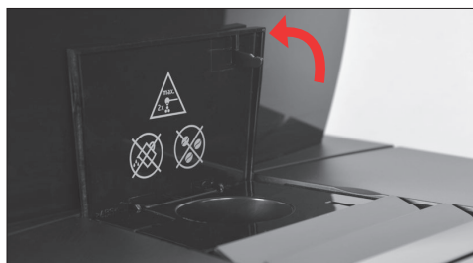
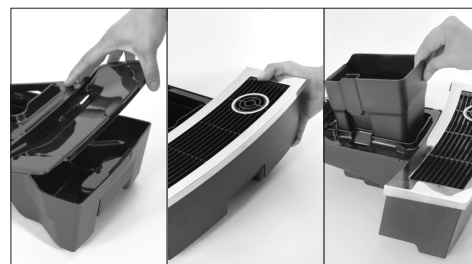


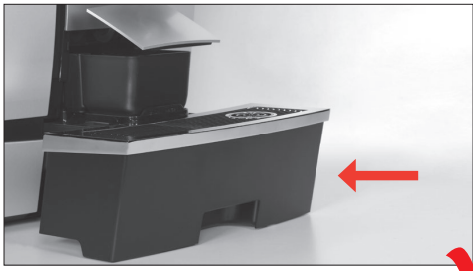
Clean machine

Clean

Start

2x





Changing the filter

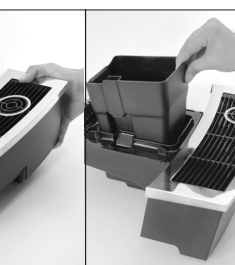
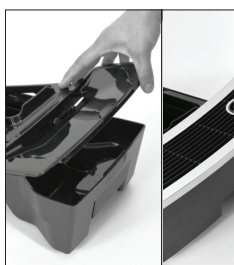
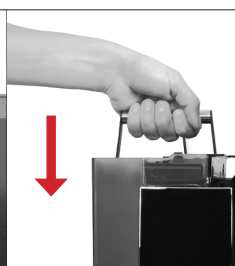
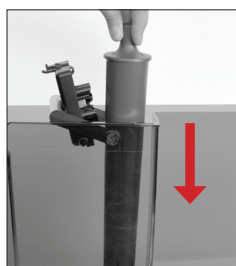
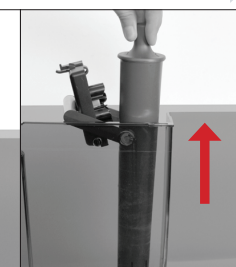
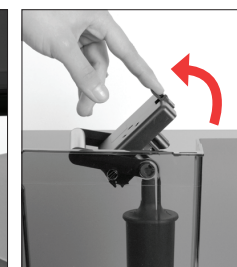
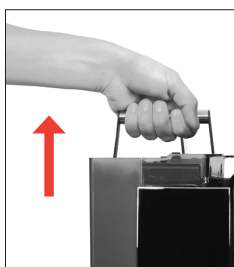
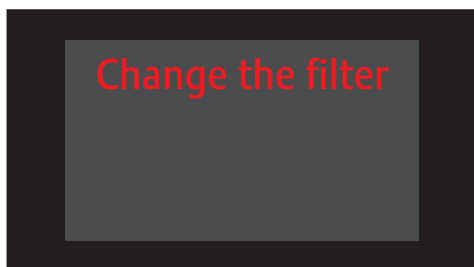
⚠ These short instructions do not replace the Instructions for Use. Make sure you read and observe the safety information and warnings first in order to avoid hazards.



Claris Pro Smart filter
Prod no. 71137



Claris Pro Smart Maxi filter
Prod no 71138



Descaling the machine

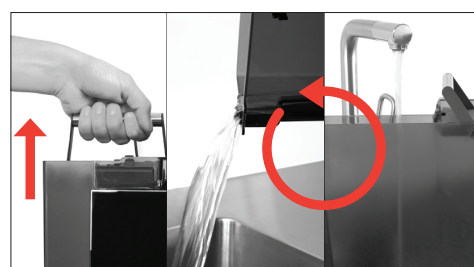
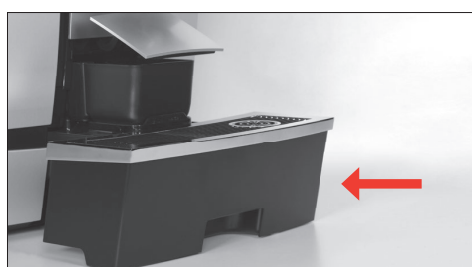
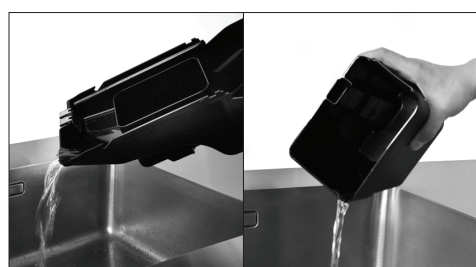
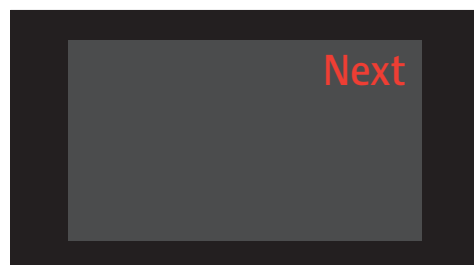
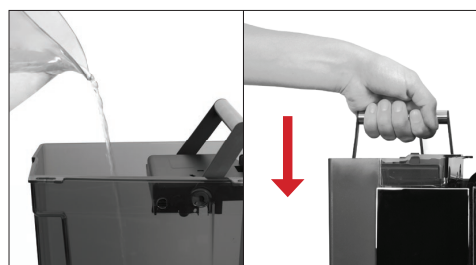
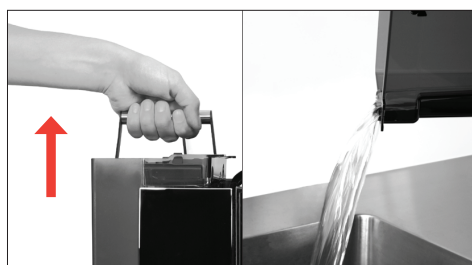
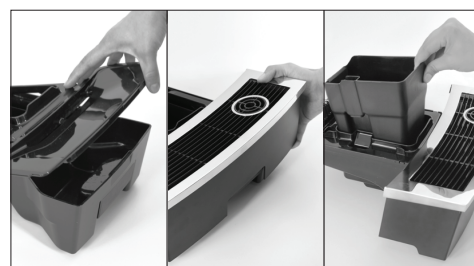
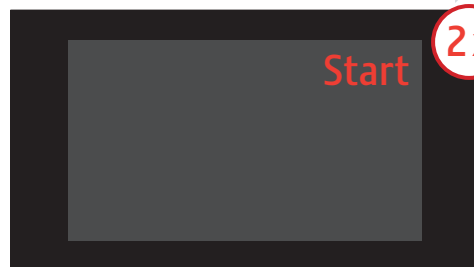
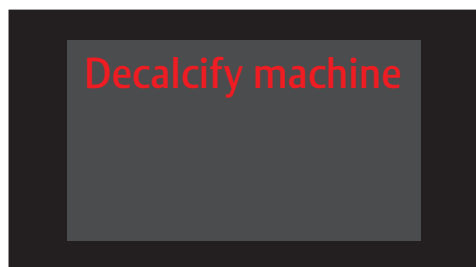
⚠ These short instructions do not replace the Instructions for Use. Make sure you read and observe the safety information and warnings first in order to avoid hazards.

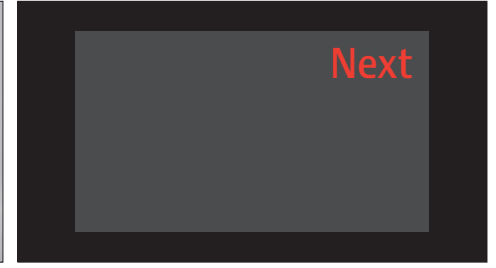
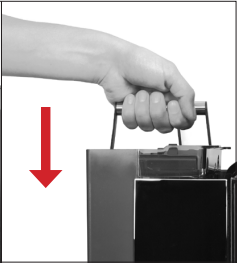


Descaling tablets
Prod no. 71122 36pcs



Descaling tablets
Prod no. 71121 9pcs





Welcome to My Coffee Shop!

Our hours of operation are Monday – Friday 9am to 5pm. Visit us at your convenience at www.mycoffeeshop.com.au. Orders and service requests can be placed by:

Phone: 1300 365 487
E-mail: clientservices@mycoffeeshop.com.au
Online: www.mycoffeeshop.com.au/shop-online
Remittances: accountsreceivable@mycoffeeshop.com.au
Service enquiries: servicecentre@mycoffeeshop.com.au

Next business day delivery via courier to:

Adelaide Canberra Melbourne Sydney

for orders placed by 1.30pm

Please note you will be advised when ordering if delivery charges apply to your order.

Once again, welcome to My Coffee Shop and remember we are here to help. If you have any questions please don't hesitate to contact us.

We look forward to exceeding your expectations and making your day easier and more enjoyable.

Kind regards,

My Coffee Shop
Client Services
My Coffee Shop Pty Ltd



My Coffee Shop Pty Ltd
ACN 102 850 037

390 Johnston St
Abbotsford VIC 3067
Ph: 03 9946 4160

97 / 1-5 Harwood St
Pymont NSW 2009 Ph:
02 9034 6580