

# Jura GIGA X3C Gen II

## Operating & cleaning instructions

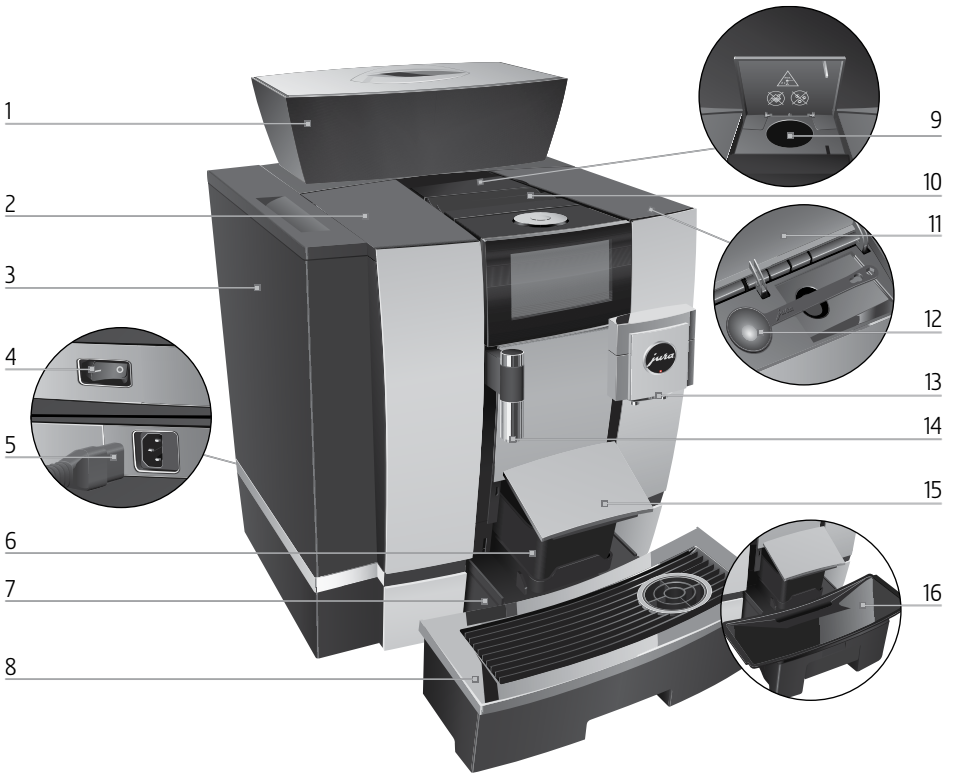


My Coffee Shop Pty Ltd  
ACN 102 850 037

390 Johnston St  
Abbotsford VIC 3067  
ph: 03 9946 4160

97/1-5 Harwood Street  
Pymont NSW 2009  
ph: 02 9034 6580

# Control elements



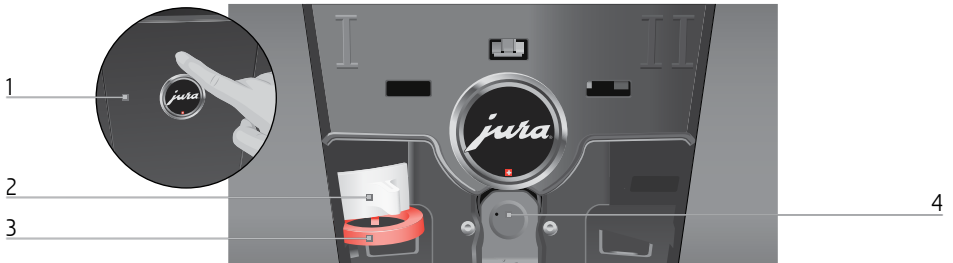
- 1 Bean container with aroma preservation cover
- 2 Water tank cover
- 3 Water tank
- 4 Power switch (back of the machine)
- 5 Plug-in mains cable (back of the machine)
- 6 Coffee grounds container
- 7 Drip tray
- 8 Cup grille
- 9 Filler funnel for ground coffee
- 10 Ventilation slats (Venti Ports)
- 11 Storage compartment cover
- 12 Measuring spoon for ground coffee
- 13 Height-adjustable dual spout
- 14 Height-adjustable hot-water spout
- 15 Drip tray cover (pivoting)
- 16 Insert for drip tray



1 Rotary Switch

2 On/Off button  (under cover)

3 Touchscreen display



### Back of the machine

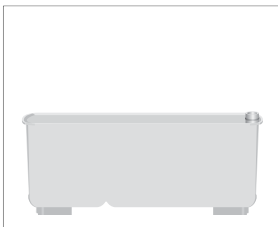
1 Service cover (open by pressing with your finger)

2 Locking device

3 Sliding catch

4 Service socket with JURA Smart Connect

### Accessories



Container for milk system cleaning



Spanner with hexagonal hole (for milk system)

# Cleaning Products – Jura GIGA X3C Gen II

## Daily

See procedure – Daily milk system clean

Must be performed at the end of each day just before the machine is turned off

Purpose: To ensure the milk system is clean overnight so milk does not go off blocking the pathways



Use Cafetto daily milk cleaner 1 litre bottle (Prod no. 71144)  
or Jura Milk System Cleaner Mini Tabs 180g (Prod no. 71150)

## Weekly

See procedure – Weekly milk system clean

Performed once per week

Purpose: To remove any build up of milk fats to ensure the milk frother works correctly



Use Cafetto weekly milk cleaner – 1 litre bottle (Prod no. 71145)

## When prompted

Clean machine – See procedure (Coffee system clean)

Performed only when prompted (Every 220 coffees)

Purpose: Removes coffee oil from the brewing unit and coffee path to maintain the quality of the coffee



Use Jura cleaning tablets - 6 pk (Prod no. 71111)  
- 25 pk (Prod no. 71112)

Change the filter – Contact service on 1300 365 487

Purpose: Protects against lime scale build up inside the machine maintaining water & steam paths



BWT mains water filter  
Prod no. BWT Filter (V)



My Coffee Shop Pty Ltd  
ACN 102 850 037

390 Johnston St  
Abbotsford VIC 3067  
ph: 03 9946 4160

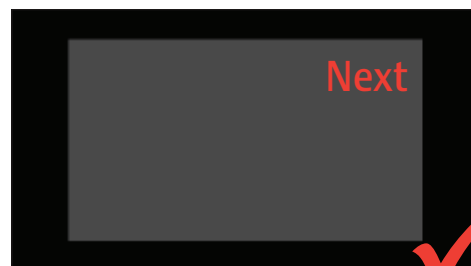
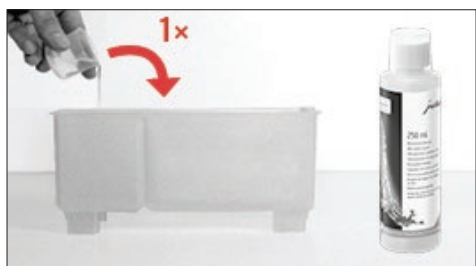
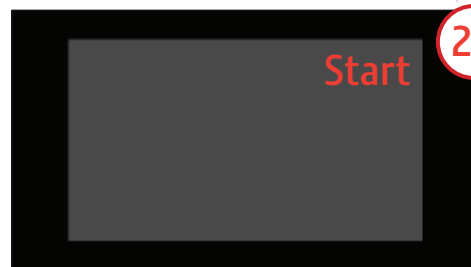
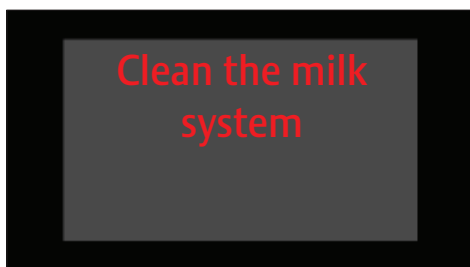
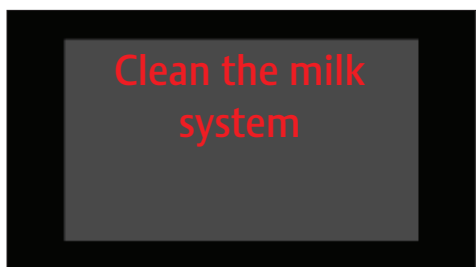
97/1-5 Harwood Street  
Pymont NSW 2009  
ph: 02 9034 6580

# Daily milk system clean

⚠ These short instructions do not replace the Instructions for Use. Make sure you read and observe the safety information and warnings first in order to avoid hazards.

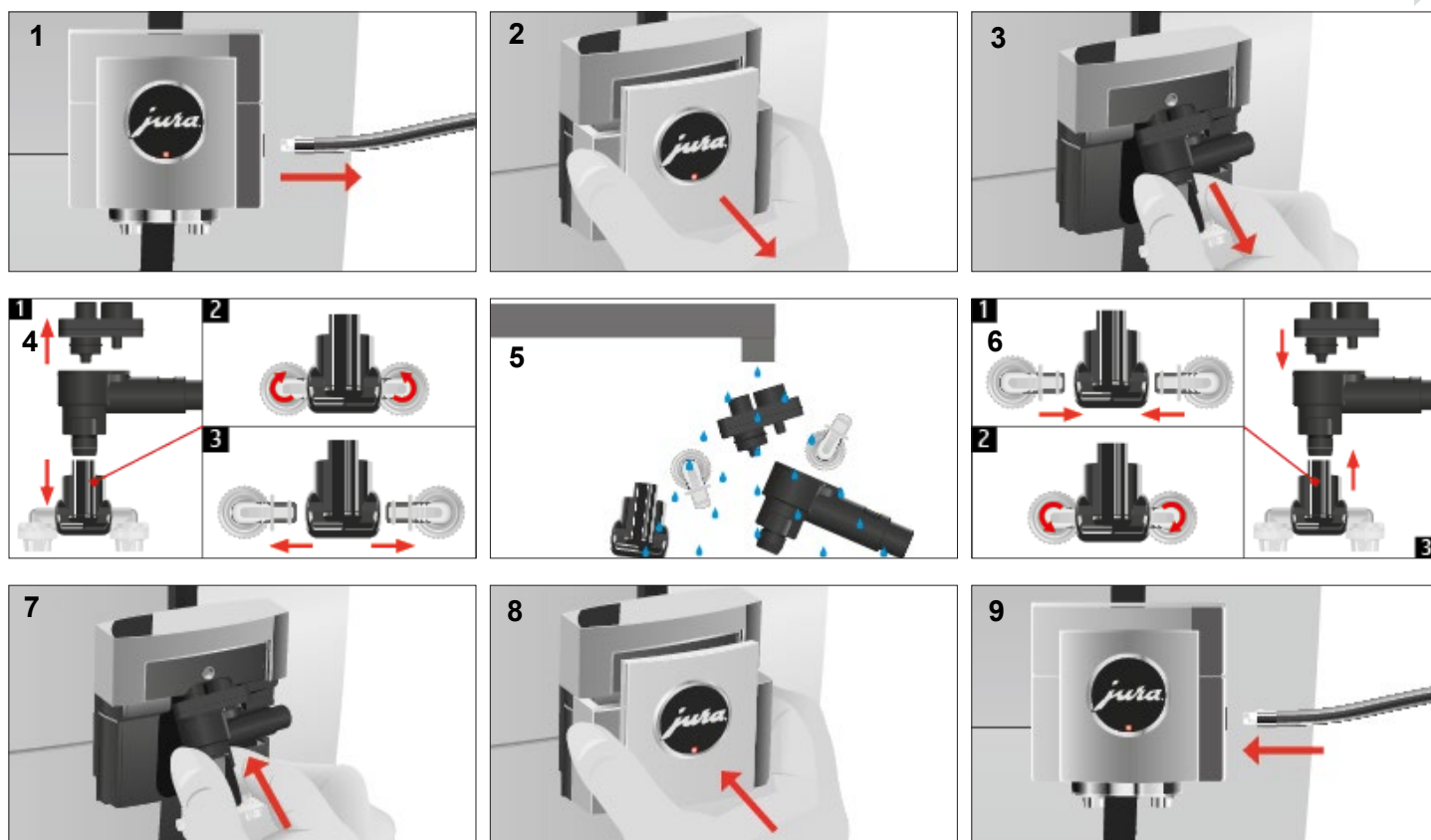


Prod no. 71144 OR Prod no. 71150



# Weekly milk system clean

⚠ These short instructions do not replace the Instructions for Use. Make sure you read and observe the safety information and warnings first in order to avoid hazards.



## Procedure



Weekly milk system cleaner  
 Prod. no 71145  
 1000ml bottle

1. Remove milk tube (Fig 1)
2. Remove milk frother cover (Fig 2)
3. Remove milk frother (Fig 3)
4. Dismantle milk frother (Fig 4)
5. Soak frother parts and milk tube in 250ml of cold water (not hot) & 15ml weekly milk cleaner for 30min
6. Rinse frother parts and milk tube under cold running water (Fig 5)
7. Re-assemble milk frother (Fig 6)
8. Fit milk frother onto coffee machine (Fig 7)
9. Replace cover and insert milk tube (Fig 8 - 9)

# Coffee system clean

⚠ These short instructions do not replace the Instructions for Use. Make sure you read and observe the safety information and warnings first in order to avoid hazards.



3-phase cleaning tablets  
Prod no. 71112 25pcs



3-phase cleaning tablets  
Prod no. 71111 6pcs

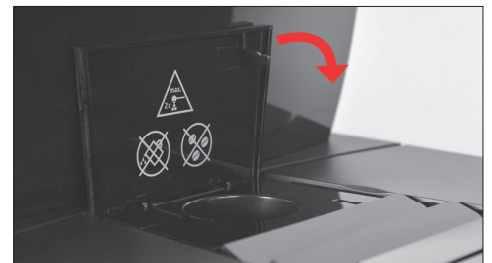
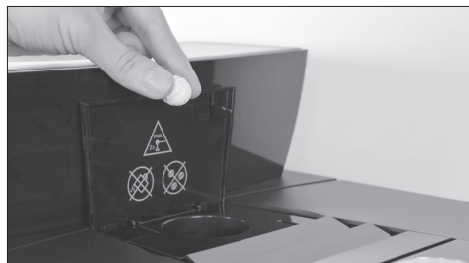
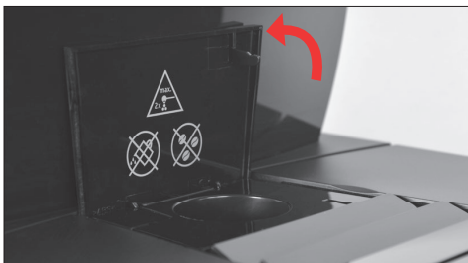
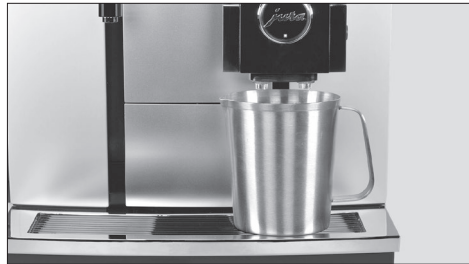
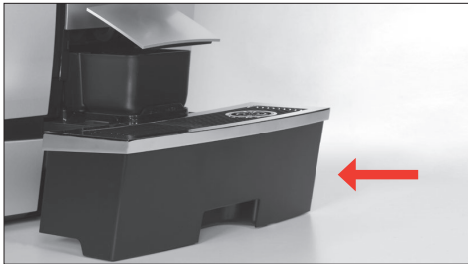
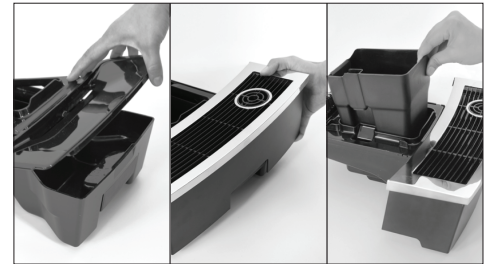


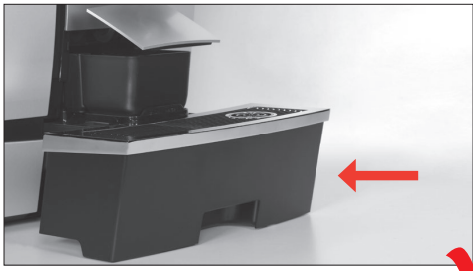
Clean machine

Clean

Start

2x







# Descaling the machine

⚠ These short instructions do not replace the Instructions for Use. Make sure you read and observe the safety information and warnings first in order to avoid hazards.



Descaling tablets  
Prod no. 71122 36pcs



Descaling tablets  
Prod no. 71121 9pcs

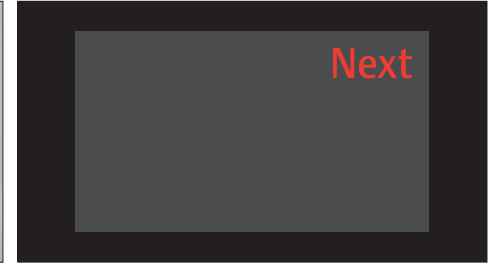
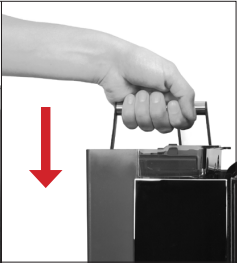


**Decalcify machine**

**Descale**

**Start** 2x

**Next**



## Welcome to My Coffee Shop!

Our hours of operation are Monday – Friday 9am to 5pm. Visit us at your convenience at [www.mycoffeeshop.com.au](http://www.mycoffeeshop.com.au). Orders and service requests can be placed by:

Phone: 1300 365 487  
E-mail: [clientservices@mycoffeeshop.com.au](mailto:clientservices@mycoffeeshop.com.au)  
Online: [www.mycoffeeshop.com.au/shop-online](http://www.mycoffeeshop.com.au/shop-online)  
Remittances: [accountsreceivable@mycoffeeshop.com.au](mailto:accountsreceivable@mycoffeeshop.com.au)  
Service enquiries: [servicecentre@mycoffeeshop.com.au](mailto:servicecentre@mycoffeeshop.com.au)

**Next business day delivery** via courier to:

Adelaide Canberra Melbourne Sydney

**for product orders placed by 1.30pm**

Please note you will be advised when ordering if delivery charges apply to your order.

Once again, welcome to My Coffee Shop and remember we are here to help. If you have any questions please don't hesitate to contact us.

We look forward to exceeding your expectations and making your day easier and more enjoyable.

Kind regards,

**My Coffee Shop**  
Client Services  
My Coffee Shop Pty Ltd



My Coffee Shop Pty Ltd  
ACN 102 850 037

390 Johnston St  
Abbotsford VIC 3067  
Ph: 03 9946 4160

97 / 1-5 Harwood S  
Pymont NSW 2009 Ph:  
02 9034 6580