



# AIRHAVEN 30

## SETUP OVERVIEW

PO BOX 2095 WHITE SALMON, WA

### I. OVERVIEW

DAYLODGE AIRHAVEN 30 (AH30) awnings are designed to setup on vehicles or supporting structure. Each awning comes standard with two types of setup accessories. These vehicle attachment accessories mount to roof racks, hinged or sliding doors or aftermarket fixed or semi-permanent anchors and more. It's easy to get creative setting up. After fixing the awning to top anchors, flat hooks are secured and tensioned from the bottom of a vehicle. The awning was designed to be highly versatile and customizable. Awnings first inflate, then attach. When not in use, awnings deflate and stow in a compact bag.

**II. Inflation** AH30 awnings have one air valve for inflating and deflating. The valve accepts a cone adapter. We recommend using a high volume pump with a pressure gauge. **Inflate to 8 PSI. Do not inflate more than 10 PSI max.**

**a. STEP 1.** Close both (2) support strut clamp valves.

**b. STEP 2.** Unscrew air valve top ring, leaving the bottom ring screwed firmly to awning.

**c. STEP 3** Insert cone adapter from pump and inflate.

**d. STEP 4** Close air valve by screwing cap into place.



### III. Attach Awning

- a. Racks and other top anchor mounting points use our Universal Mounts.
- b. Slider doors, ledges, gutters, lips, slots, channels and eyelets can use the AH30 Standard Top Mounts



AH30 Universal Mounts



AH30 Standard Top Mounts



# AIRHAVEN 30

## SETUP OVERVIEW

PO BOX 2095 WHITE SALMON, WA

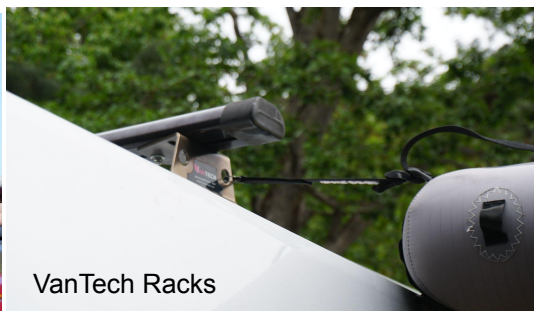
### III. Awning Attachments

#### a. Universal Mounts – racks and other vehicle side or top connection locations.

- i. Two (2) Universal Mounts are included with each awning.
- ii. One end hooks to the awning and the other end to an anchor point.
- iii. Clip to anchor points with carabiner or wrap around racks, bars, etc used as a strap loop.
- iv. Slider ladder lock connects to awning in one of several belt loop locations. Customize position for different widths between mounting points.



#### Universal Mount Examples





# AIRHAVEN 30

## SETUP OVERVIEW

PO BOX 2095 WHITE SALMON, WA

### III. Awning Attachments

#### b. Vinyl Coated Top Mounts – slider doors, hinged doors and other ledges, gutters, slots and channels

- i. Two (2) Top Mounts are included with each awning.
- ii. One end connects to the awning and the rubber coated flat-hook end to anchor points.
- iii. Anchor to door tops, gutters, channels and angles that can accept the hook.
- iv. Ladder Locks used to secure awning daisy chain.



Vinyl Coated Top Mount Accessories



Slider Door Top



#### Top Anchor Examples



Prinsu Roof Racks



Flatline Roof Racks



Front Runner (Dometic) Roof Racks



# AIRHAVEN 30

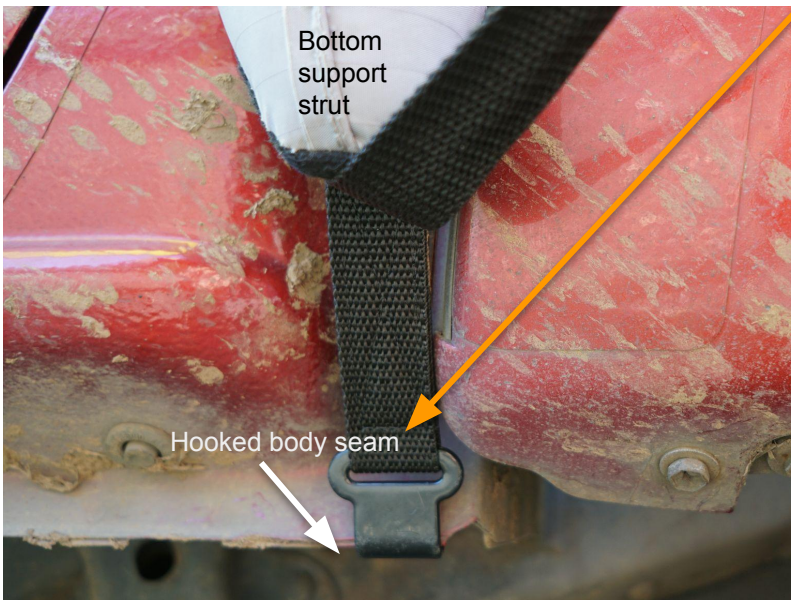
## SETUP OVERVIEW

PO BOX 2095 WHITE SALMON, WA

### III. Awning Attachments

b. Flat hook straps – Use to connect and create tension from bottom of vehicle.

- i. Two (2) bottom tension straps.
- ii. One end connects to tension strap that passes through support struts belt loops
- iii. Flat hook to bottom of the vehicle chassis or door bottom





# AIRHAVEN 30

## SETUP OVERVIEW

### Inflate, Attach, Pressurize Supports, Secure

1- Inflate

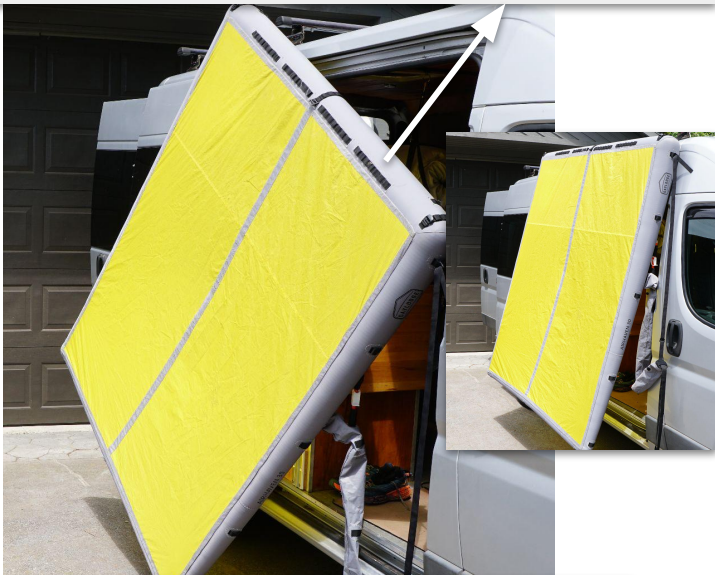


2- Position



Use handle

3- Attach using standard or top mount accessory



4- Pressurize struts to bring canopy into position



Open Clamp Valves utilizing air pressure from main strut to inflate

5- Secure and tension flat hooks to bottom of vehicle





# AIRHAVEN 30

## SETUP OVERVIEW

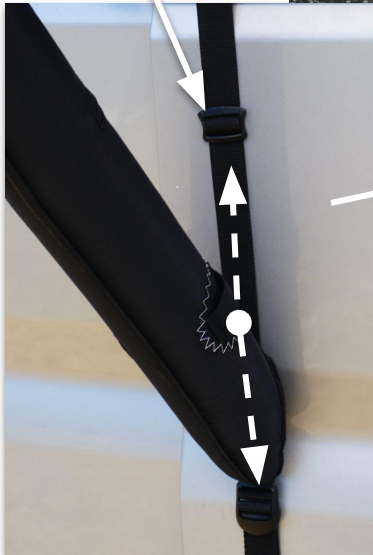
### Tuning the canopy angle

The front of the awning can be lowered or raised by sliding the support struts up and down the bottom tension straps.



Tension locks slide on straps are used to position support struts.

Support strut belt loop with tension lock above. Ladder lock from bottom hook strap below.



Tension locks can slide into belt loop pockets that are reinforced to lock the strut to the desired height on the strap. Or place above the belt to prevent struts from moving up the strap.



# AIRHAVEN 30

## SETUP OVERVIEW

### Tips and Troubleshooting

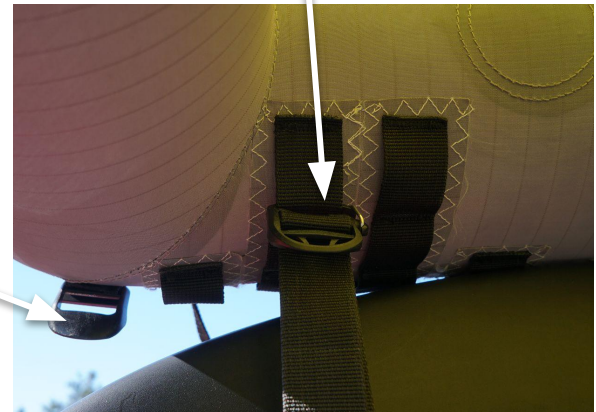
Two moveable ladder locks included. Attach to different belt loops to customize your setup.

Gated ladder lock can be repositioned for custom setups



Gated ladder locks for moving bottom tension strap positions

Fixed ladder lock option



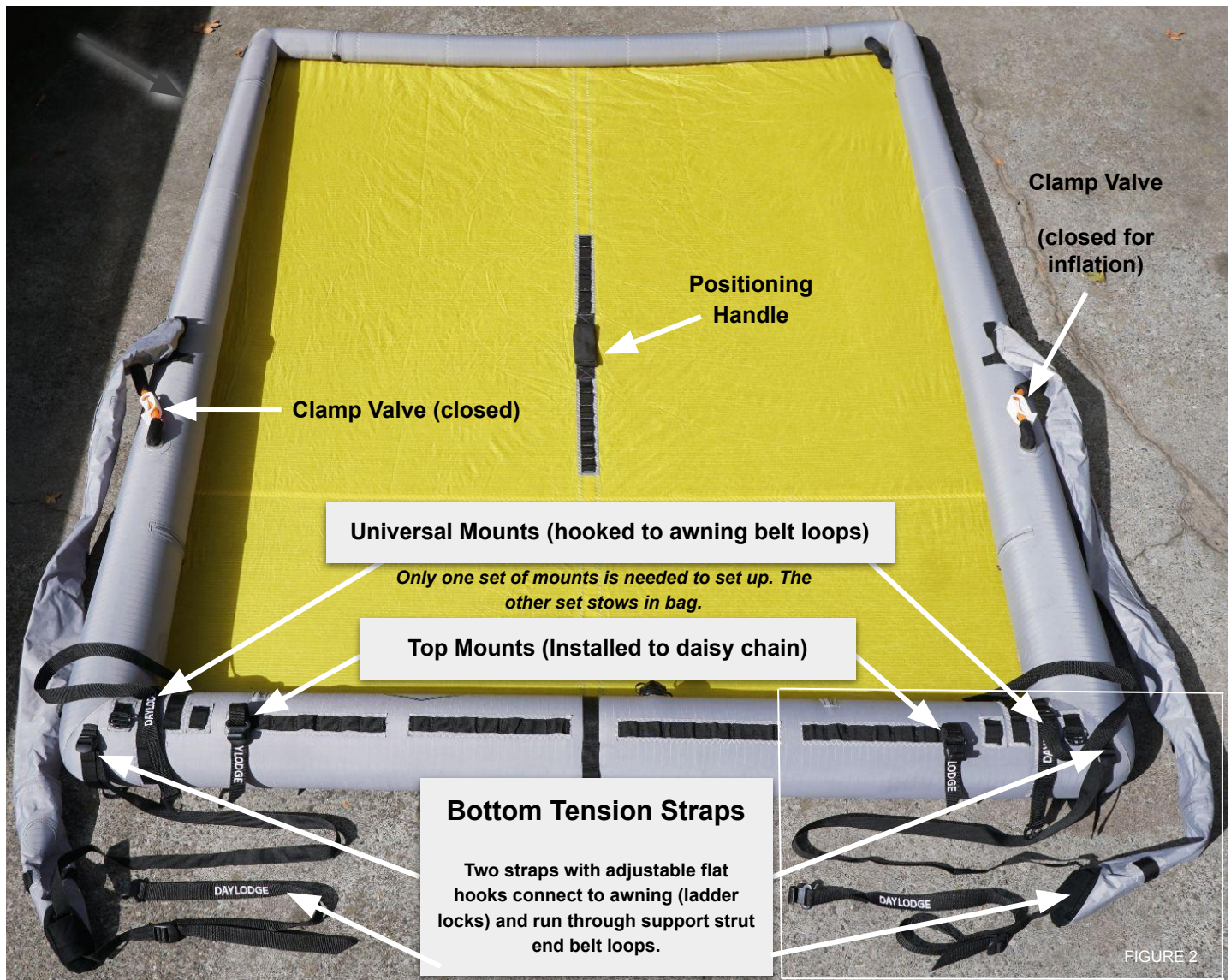


# AIRHAVEN 30

## SETUP OVERVIEW

PO BOX 2095 WHITE SALMON, WA

**FIGURE 1 - Inflated awning ready to attach**







# AIRHAVEN 30

## SETUP OVERVIEW

PO BOX 2095 WHITE SALMON, WA

**FIGURE 2 - Inflated awning attachment accessories  
(showing one of two identical sides)**

