

TRULY UNLIKE ANY OTHER BROADHEAD

As fellow hunters, we want to personally thank you for your interest in Annihilator Broadheads. We believe there is no greater satisfaction than harvesting an animal with a bow. The season is short and the time most of us get to spend hunting is even shorter. Having full confidence in your gear is a must.

For years we dreamed of developing a more ethical, durable, and better flying broadhead. We wanted something that flew accurately, had improved lethality, and could be used over and over!

Annihilators are truly unlike any other broadhead. They are insanely durable made from a single-piece of 4140 alloy steel. The edge retention is exceptional. Their accuracy out to long range is unmatched. The holes they create in game are larger in size than the cut diameter.

No matter your draw weight, arrow speed, or bow type, we think you're going to love how these broadheads perform on even the largest of big game animals. We hope you don't take our word for it though. Try them for yourself and put them to the test!

Enjoy your time afield and keep us posted on your archery hunting endeavors. - BRANDON BRODIE & MICAH BROWN
FOUNDERS AND FELLOW HUNTERS



ANNIHILATOR BROADHEADS



WHY ANNIHILATOR BROADHEADS?

Annihilator Broadheads are engineered to fly like field points, be nearly indestructible, pass-through animals, and increase lethality over other designs.

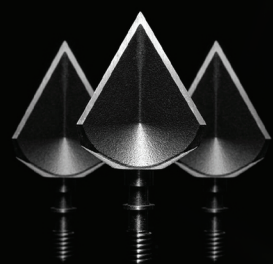
The Annihilator is a new shape defining an evolution in broadhead efficiency to ethically take game with a bow or crossbow.

ANIMALS EXPIRE FASTER WITH ANNIHILATORS

- PUNCHES HOLES THROUGH ANY SIZE ANIMAL
- REDUCES FRICTION ON ARROW SHAFT OR BOLT
- NON-CLOSING WOUND CHANNEL
- CREATES SUCKING CHEST WOUNDS

ANNIHILATORS HIT THE MARK & LAST A LIFETIME

- EASILY RESHARPENABLE AND REUSABLE
- PRACTICALLY INDESTRUCTIBLE
- LONG-RANGE FIELD POINT ACCURACY
- BOW / CROSSBOW APPROVED AT ALL SPEEDS



100

100 GRAIN BROADHEAD

.910 INCH CUT DIAMETER
MSRP \$56.99

100 XL

100 GRAIN BROADHEAD

1 1/16TH INCH CUT DIAMETER
MSRP \$62.99

125 XL

125 GRAIN BROADHEAD

1 1/16TH INCH CUT DIAMETER
MSRP \$64.99

125

125 GRAIN BROADHEAD

.910 INCH CUT DIAMETER
MSRP \$58.99

150 XL

150 GRAIN BROADHEAD

1 1/16TH INCH CUT DIAMETER
MSRP \$66.99



FOR MORE INFORMATION, RECOMMENDATIONS, OR GET IN TOUCH VISIT ANNIHILATORBROADHEADS.COM OR SCAN THE QR CODE.

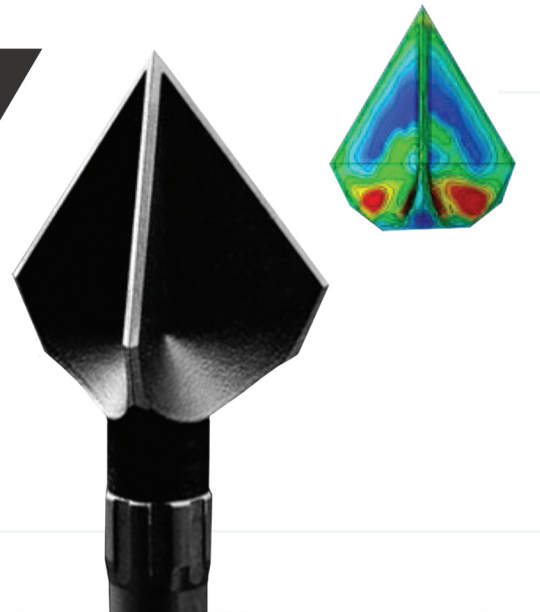


TO SEE REAL-WORLD EXAMPLES OF WOUND CHANNELS, BLOOD TRAILS, AND GAME HARVEST, CHECK OUT OUR SOCIAL MEDIA. [f](#) [v](#) [@](#)

A NEW SHAPE

The Annihilator Broadhead is unlike anything else out there. Its single piece design flies quieter with increased accuracy delivering more damage all while penetrating deeper. The Annihilator was born out of a passion for the hunt. We believe you will have a hard time finding a broadhead you will be more satisfied with.

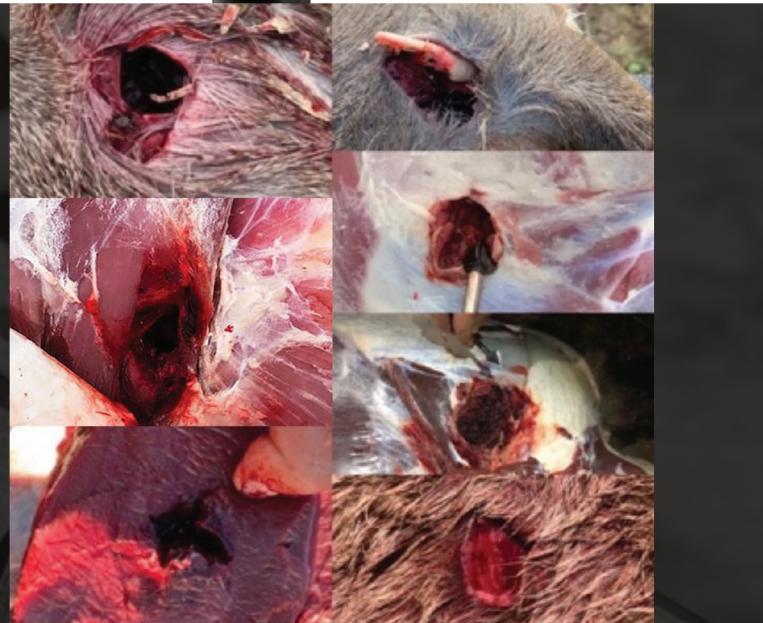
The back scoop wedge design adds a balanced amount of cutting surface area and drag to maximize shear force on contact of an animal without any trade off in flight dynamics or penetration.



ANNIHILATORS CREATE HOLES IN ANIMALS THAT CAN'T CLOSE UP

Annihilators have a massive cutting surface area (call it CSA for short). It's designed to core out and remove more mass out of an animal than any other broadhead. They create large wound channels and prevent them from collapsing on the arrow.

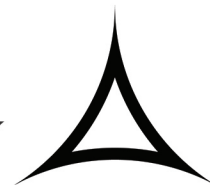
Irrespective of animal size or shot placement, the Annihilator scoops will put a hole about 1.5 times or greater than the size of its cutting diameter all the way through an animal without failure.



ANNIHILATORS GET MORE PASS THROUGHS AND LESS DEFLECTION

With larger wound channels, arrows have a significantly reduced amount of friction on the shaft and arrow components. The result is less total drag as an arrow passes through an animal cavity for greater penetration efficiency, no matter your arrow weight or bow set up. Even low to medium poundage shooters will see significant increases in arrow penetration with Annihilators.

With 3 points of cutting contact and a minimum .038" wall thickness, Annihilators don't change shape when they hit something hard in an animal like bone. They hook up fast upon impact and go through animals on the same trajectory you send it on. They are a shorter cut on contact broadhead with much less leverage than longer heads for less of a chance of deflection.



ANNIHILATORS GROUP WITH FIELD POINTS AT LONG RANGES

We eliminated all surfaces that cause broadheads to fly inconsistently. The Annihilator is a smaller cut, single piece, fixed blade broadhead with no vents or cut outs and 100% symmetry on three sides. The back scoop wedge design generates a balanced amount of lift and requires no vane alignment to achieve optimal flight stabilization.

You can expect long range field point accuracy out to as far as you can effectively shoot with zero chance of a mid air failure. And they are deadly quiet.

ANNIHILATORS ARE MORE DEVASTATING AND INCREASE LETHALITY COMPARED TO OTHER BROADHEAD DESIGNS

The Annihilator adds steps to lethality other broadhead shapes cannot accomplish. It's raised scoops extend radially beyond most typical arrow shaft OD's. This design uniquely traps and entrains air into an animal's cavity inducing both high and low air pressure through the animal. This causes rapid internal pressure changes helping collapse the chest cavity faster. It's kind of like knocking the wind out of them then removing their ability to recover.

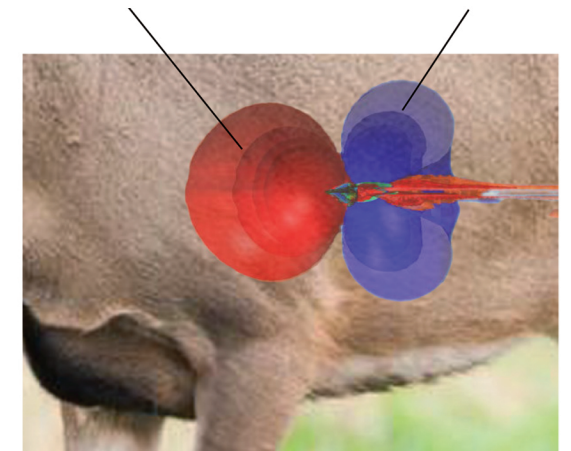
Annihilators make all the difference in animal recovery. With this design, expect a much faster death more consistently, making it a more effective and more ethical option to screw onto the end of a hunting arrow. You can expect to see where they fall the vast majority of the time.

5-INCH COMPRESSION AIR PRESSURE WAVE

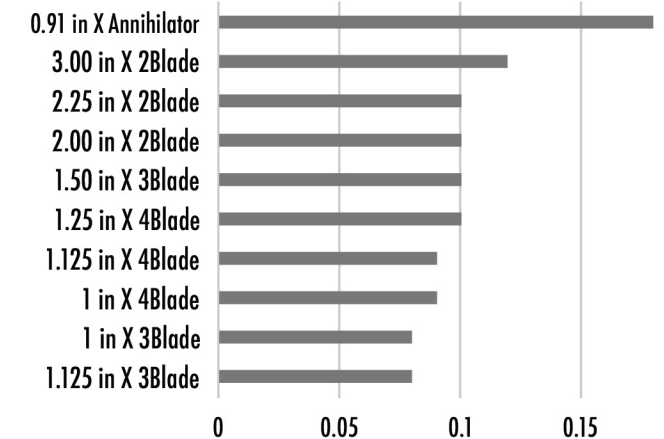
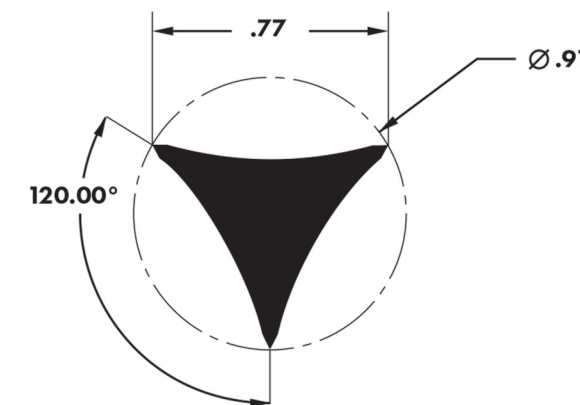
Computational Fluid Dynamics (CFD) analysis was conducted using a 100 Grain Annihilator on a 450 grain arrow traveling at 273 ft/sec at point of impact into a deer.

7.79-INCH LOW-PRESSURE TENSION AIR POCKET IMPLOSION

Pushes and pulls air into the cavity helping to rapidly force internal pressure changes while blood and wet visceral material move through the wound channel.



CUTTING SURFACE AREA MATTERS



100 grain standard size Annihilators have .180 square inches of CSA, which is greater than any other broadhead. Greater CSA means increased lethality, penetration, and durability.

This is a chart showing the CSA of different broadhead configurations against a 100 grain standard sized Annihilator, one of the smallest cut diameters.

ANNIHILATORS ARE EASILY RESHARPENABLE AND REUSABLE

The vast majority of broadheads are good for one shot only. Moving parts, fasteners, cut outs, seams, etc. all weaken the structural integrity of a broadhead. The Annihilator is investment cast out of a solid piece of 4140 alloy, one of the toughest high carbon steels available. It's hardened to 52 Rockwell for the optimal balance of exceptional edge retention and sharpness. The Annihilator doesn't warp, bend, or break when passing through an animal, no matter the shot placement. If you want to resharpen, the edges are pitched at 30 degrees so you can simply lay it flat on any diamond stone and take a few passes. Getting a factory edge can be done in the field in under 5 minutes.