

BEFORE YOU START:

- The **VA rating of the lamp/load**, and the **total inrush current** need to be calculated using the specifications provided by the lamp/fitting manufacturer.
- Select the appropriate dimmer based on total load and inrush calculations.
- Do not use lamps with a power factor of less than 0.8
- Due to some lamp/loads not taking their current in a sinusoidal waveform, further derating may be required. If you are unsure please contact us.

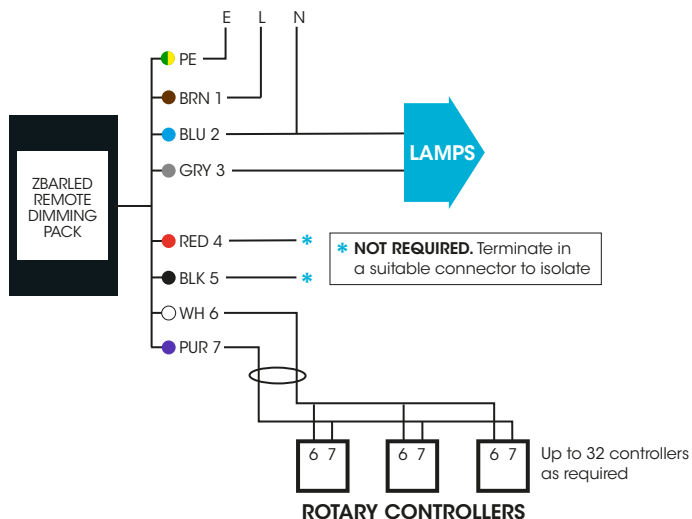
Installation must be carried out by a qualified electrician. For optimum performance the dimmer must be programmed.

ZMOBARCR / ZGRIDBARCR

Rotary controller to be used with our ZBARLED range

WIRING INSTRUCTIONS

Wiring with rotary controllers

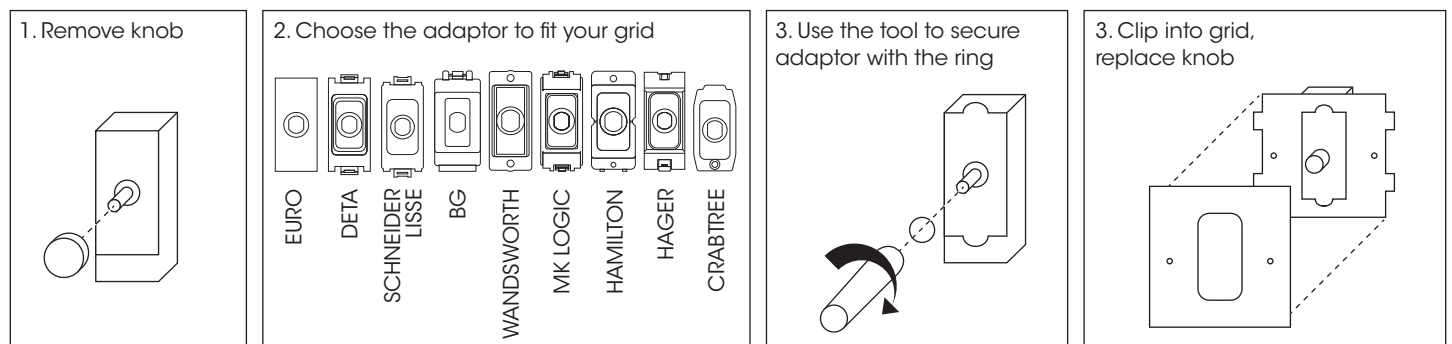


INSTALLATION

NB: Installation must be carried out by a qualified electrician. This product only works with our ZBARLED range.

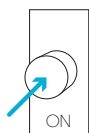
DO NOT CONNECT TO MAINS.

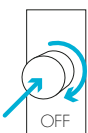
- The rotary Controller must connect to one of our ZBARLED's using a 2 Core and Earth mains rated cable.
- The correct polarity must be observed at each connection point, so from the ZBARLED the white conductor marked 6 must connect to terminal 6 at each controller.
- The purple conductor 7 must connect to terminal 7 at each controller.
- Terminals should be tightened to a maximum of 0.5Nm.
- Check polarity is correct throughout.
- Fit appropriate adaptor as in assembly diagram below. (Grid only)
- Fit device into wall box ensuring cables are not obstructed.
- Total maximum cable length between ZBARLED and all controllers is 100m.
- Product should be recycled at end of life where facilities exist.

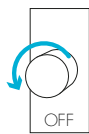


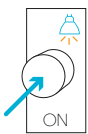
PROGRAMME LIGHT LEVELS WITH SMART SETTINGS


NB: You have 30 minutes to programme once mains power is turned on.


- 

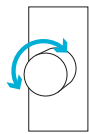
1 Turn on the controller.
- 


2 Turn controller fully clockwise then press to turn off.
- 

3 While off, turn the controller fully anti-clockwise.
- 

4 Press to turn on. The lights will now flash to indicate that you are in programming mode.
- 

5 Turn controller clockwise to bring on the lights and choose your desired minimum level.
- 

6 Let go of the controller and wait for a flash. The minimum level has now been set.
- 

7 Turn controller to the desired start level.
- 

8 Let go of the controller and wait for a flash. Your dimmer is now programmed and ready to use.

NB: All settings will be retained even in the event of a power cut. To reset, turn mains power off and wait 10 seconds. Then switch the power back on and start the programming sequence again.

We are award-winning manufacturers of LED dimming solutions and pride ourselves on providing fast, friendly, expert advice.

For our full range of products, technical advice & instructional films or to find your nearest stockists please see our website.

SPECIFICATIONS

| PART NO. | DESCRIPTION |
|---------------|------------------------------|
| ZMCBARCR | ROTARY CONTROLLER MODULE |
| ZGRIDBARCR | GRID ROTARY CONTROLLER |
| ZGRIDBARCRBLK | BLACK GRID ROTARY CONTROLLER |
| ZWHBARCR | PLATED ROTARY CONTROLLER |

CONTACT OUR FRIENDLY TEAM

Call: **0345 519 5858**

Fax: **0845 519 5757**

Email: sales@zаноcontrols.co.uk
www.zаноcontrols.co.uk

Zano Controls, Unit 1 Chantry Court, Wrythe Lane,
 Carshalton, Surrey, SM5 2DG