

## BEFORE YOU START:

- The **VA rating of the lamp/load**, and the **total inrush current** need to be calculated using the specifications provided by the lamp/fitting manufacturer.
- Select the appropriate dimmer based on total load and inrush calculations.
- Do not use lamps with a power factor of less than 0.8
- Due to some lamp/loads not taking their current in a sinusoidal waveform, further derating may be required. If you are unsure please contact us.

**Installation must be carried out by a qualified electrician. For optimum performance the dimmer must be programmed.**

# ZGRIDLED150

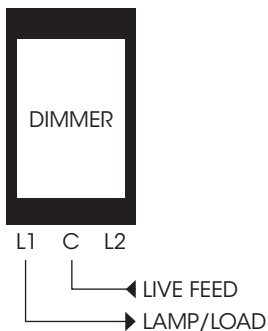
Next generation 0-150W dimming

# ZGRIDLED+

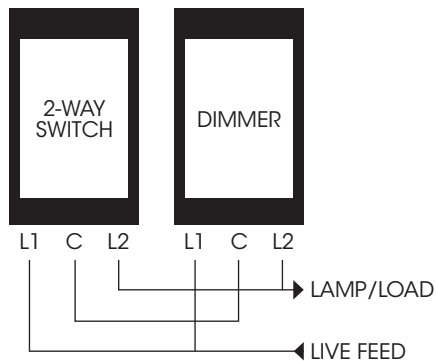
Intelligent 5-250W LED dimming

## WIRING INSTRUCTIONS

Dimmer



Switch and dimmer



## INSTALLATION

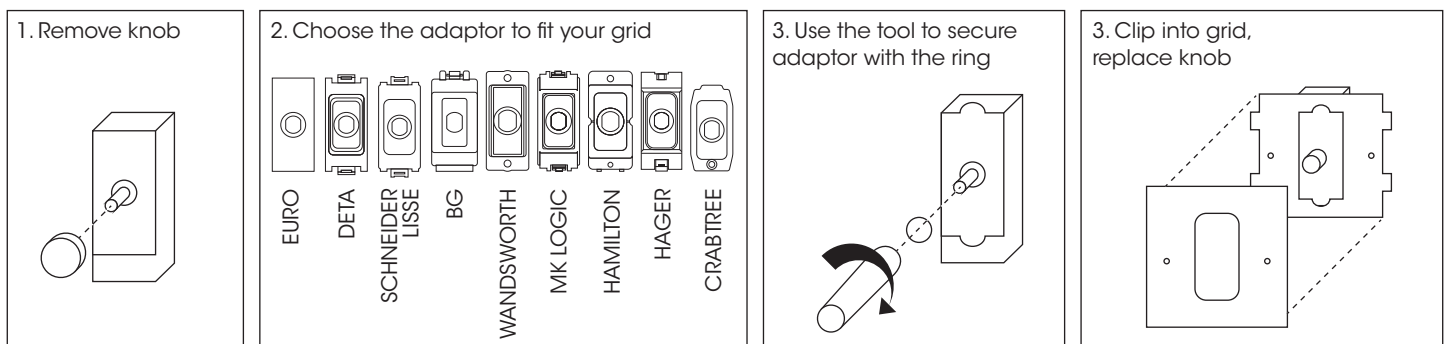
**NB: Installation must be carried out by a qualified electrician.**

- Turn off the mains at distribution board.
- Wire device using a suitable mains rated cable as in wiring diagrams.
- Terminals should be tightened to a maximum of 0.5Nm.
- Check polarity is correct throughout.
- Fit appropriate adaptor as in assembly diagram below.
- Product should be recycled at end of life where facilities exist.

## PROGRAMME LIGHT LEVELS WITH SMART SETTINGS

- 1 Turn on the controller.
- 2 Turn controller fully clockwise then press to turn off.
- 3 While off, turn the controller fully anti-clockwise.
- 4 Press to turn on. The lights will now flash to indicate that you are in programming mode.
- 5 Turn controller clockwise to bring on the lights and choose your desired minimum level.
- 6 Let go of the controller and wait for a flash. The minimum level has now been set.
- 7 Turn controller to the desired start level.
- 8 Let go of the controller and wait for a flash. The start level has now been set.
- 9 The lights will now come on at maximum brightness. Turn the controller down to a different maximum if preferred.
- 10 Let go of the controller and wait for a flash. Your dimmer is now programmed and ready to use.

**NB: All settings will be retained even in the event of a power cut. To reset, just start the programming sequence again.**





## SPECIFICATIONS

PART NO.	ZGRIDLED150 ZGRIDLED150BLK ZGRIDLED150CLWH ZGRIDLED150CLBLK	ZGRIDLED+ ZGRIDLED+BLK ZGRIDLED+CLWH ZGRIDLED+CLBLK
MODULE SIZE	SINGLE GRID	SINGLE GRID
LAMP TYPE	LED/CFL	LED/CFL
MAX WATT	150W / VA	250W / VA
MIN WATT	0W / VA	5W / VA
MIN BOX DEPTH	35 MM (47MM for Click Scolmore Grid Pro adaptor)	35 MM (47MM for Click Scolmore Grid Pro adaptor)
2-WAY SWITCHING	YES	YES
NEED TO DE-RATE TO 160W / VA	N/A	YES, IF FITTING 2 OR MORE PER PLATE

## MAXIMUM PLATE LOAD RECOMMENDATIONS

COVER PLATE SIZE	LED RATING
SINGLE PLATE	400W / VA
DOUBLE PLATE	640W / VA
6-8 GANG	1280W / VA

## PRODUCT OVERVIEW

The ZGRIDLED range of dimmers has been specifically designed to dim LED lamps. The advanced technology used to control the load results in flicker-free dimming of lamps and drivers. This technology also eliminates the need to differentiate between leading and trailing edge lamps. It works with both. All our LED dimmers have built-in thermal and over-load protection, as well as smart settings. It is essential before making connections to check the load against the table to ensure it meets the specification of the dimmer switch.

### CONTACT OUR FRIENDLY TEAM

Call: **0345 519 5858**

Email: [sales@zаноcontrols.co.uk](mailto:sales@zаноcontrols.co.uk)

[www.zаноcontrols.co.uk](http://www.zаноcontrols.co.uk)

Zano Controls, Units 1&2 Chantry Court, Wrythe Lane, Carshalton, Surrey, SM5 2D

### GUARANTEE

For lamp test results and our full terms and conditions please see our website: [www.zаноcontrols.co.uk](http://www.zаноcontrols.co.uk)