

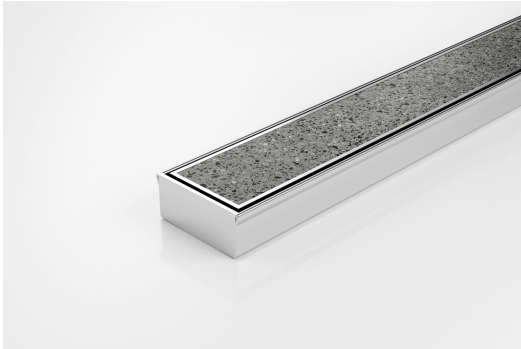


ARCHITECTURAL
GRATES + DRAINS



65TiiCO30

Tile Insert Drain



The 65Tii30 is a premium tile insert drain suitable for tiles up to 12mm thick.

The 65TiiCO30 is a fixed length drainage unit with a centre outlet. The complete drainage unit is full 316 marine grade stainless steel.

Refer to AS3500 for outlet pipe sizes specific to your installation.

Code 65TiiCO30

Range 65

Grate Style Ti

Category Fixed-Length Units

Channel Material Stainless Steel

Steel Grade 316

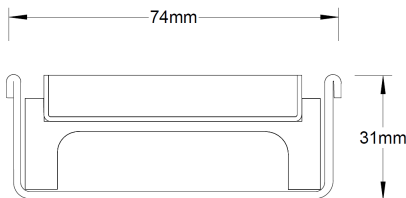
SPECIFICATIONS + DIMENSIONS

Channel Width	74mm		
Channel Depth	31mm		
Length(s)	900mm	1000mm	1200mm
Outlet Size	DN50		

STORMTECH COLOUR FINISHES



Electroplate finishes subject to natural variation with time and local environment. Factors such as pools/surf beaches may require electropolishing. Contact us for suitability.



Grates longer than 1500mm supplied in sections.
Tile Inserts longer than 1200mm supplied in sections.
Channels over 3000mm supplied in sections with joiner.
+/-2mm tolerance on dimensions.

PRODUCT APPLICATIONS

- | | |
|-----------------------------|----------------------------|
| Bathroom Drainage | Paved Area Drainage |
| Aged / Health Care Drainage | Shower Drainage |
| Balcony Drainage | Multi-Residential Drainage |
| Courtyard / Patio Drainage | Special Needs Drainage |
| Pool and Spa Area Drainage | Threshold Drainage |
| Hospitality Drainage | Wet Area Drainage |

Copyright © Stormtech Pty Ltd. Patent 733361. Drawings not to scale, please use dimensions shown.
Downloaded 16/06/2022 (please check for updates)



Visit stormtech.com.au
for tools + inspiration.

Phone **1300 653 403**

Email info@stormtech.com.au