



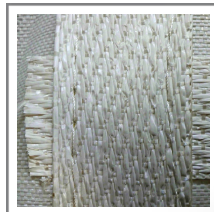
Bag Graphics Will Vary

Envirosac® Large Chute Bag

Bag Characteristics	
Shell	Woven Polypropylene, Fiber
Liner	Polyethylene, Solid Wall
Thickness	6 mm
Volume Capacity	.25 yd ³ 7.2 ft ³ 53.93 gal
Safety Factor	5:1 Safety Ratio

Product Code - BAG_RM_CHUTE_LG-LI

Physical Characteristics	
Length (in)	25
Width (in)	25
Height (in)	20
Weight (oz)	80



Manage your job site debris with 'pop-up' ease. The Envirosac® Large Chute Bag offers versatile convenience to capture every job-site material – wet or dry.

Features:

- Pop-up metal frame keeps sack upright and open
- Tough, tear-resistant woven polypropylene
- Extra sturdy reinforced poly straps wrap around the bottom
- Chain-stitched waterproof liner for liquid containment
- Poly pocket for managing project information
- Strong lift handles for maximum portability
- Excellent for transporting mulch, sand, gravel, etc.