

# Made by Design

Product Catalogue



Fantaci.com.au

2022 — 2023

FANTACI



# FANTACI Made by Design

FANTACI is a design-focused building materials supplier based in Melbourne. We design, source and distribute quality interior materials and fit-out supplies in bulk, working with property developers, construction companies, and tradespeople to bring projects to life.

# TABLE OF CONTENTS



P02~19

Porcelain Slabs



P20~25

Timber Flooring



P26~35

Pre-made Vanity



P36~43

Bathroom Tapware



P44~53

Basins



P54~60

Wall Showers



P61~68

Bathtubs



P69~70

Toilets



P71~77

Mirrors



P78~89

Bathroom Accessories



P90~106

Kitchen Tapware & Sinks



P107~112

Wood Plastic Composites

# WHY CHOOSE FANTACI ?



## One-stop Sourcing & Supply

We source a wide range of quality interior products in bulk from hundreds of trusted manufacturers. By ordering directly from FANTACI, you don't need to source products separately or via an intermediary, saving you significant time and money.



## Hassle-free Process

By working with FANTACI, organising your construction supplies has never been easier. We will order and deliver all your products using our well-planned procurement process customised to your project's timeline and budget.



## Price Match Guarantee

We can give you access to innovative and rare products at competitive prices. We carefully select our range to meet a range of budgets and needs. All FANTACI products come as part of a package, ensuring you get an unbeatable price. If you find a lower price on the same quality item, we'll match it.



## Quality Control

Ensuring our materials meet our high-quality standards is vital. We take the time to carefully select manufacturers with an excellent reputation and a commitment to quality products and manufacturing processes. Most of our products have a testing report and also come with up to a competitive 10-year warranty for added peace of mind.



## Interior Design Services

If you want a custom interior design for your project, our award-winning design team can help. In addition to their bespoke service, we also have created a range of unified interior packages with all the materials and fit outs you need to complete your project. These pre-designed interiors suit a variety of aesthetics and budgets.



## Strong Pre-sale Support

As part of our service, we can provide you with a material sample board, to help you choose your preferred materials. We can also invite your clients to visit our Port Melbourne showroom to experience all our products and materials first-hand. Clients can view 3D renderings of their future homes through the VR interface before they decide to buy.



## WALL & FLOOR COVERINGS





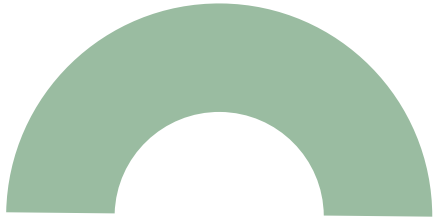
# LARGE-FORMAT PORCELAIN SLABS



FANTACI's large-format porcelain slabs are a luxurious and practical choice for walls, splashbacks, floorings, cladding and other areas of the home. These slabs are created by heating various elements in a kiln at a very high temperature, achieving an elegant result with a lightweight and slimline profile. Large-format porcelain tiles are a favourite among modern renovators, architects and builders, not only for their infinite beauty, but also for their versatility and ease of placement. Thanks to their considerable size and the absence of grout, large-format porcelain slabs deliver a flowing and seamless look that is easy to achieve and maintain. Our large-format porcelain tiles come in a variety of sizes and finishes to suit an array of interiors.







## ADVANTAGES

01

Create Space and Flow

The sheer size of large-format porcelain tiles makes them a fantastic way to create the illusion of larger space in any room and a seamless flow throughout the room or home.



02

Incredibly Versatile

Large-format porcelain can be used on almost any surface of the home, including on splashbacks and around fireplaces. The slabs also can be cut on-site to fit any shape or size.



03

Extremely Durable

Large-format porcelain slabs are stronger than standard tiles, with a breaking point of 2,400kg/M<sup>3</sup> compared with 1,800-2,200kg/M<sup>3</sup>, respectively. They can withstand intense UV rays, making them an excellent choice for outdoor spaces. Additionally, they are stain- and mould-resistant, and don't need a sealant or ongoing maintenance. These features make them a practical option for high-traffic, wet areas in kitchens and bathrooms.



## 04

Easy To Work With

Porcelain slabs are very easy to carry, cut—using a glass or tile cutter—drill and place. Most of this work can be done quickly on-site with minimal noise and dust.



## 05

Cost-Effective

Due to their thin profile and light weight, large-format porcelain tiles are cheaper to store and transport than other materials. Installation is also more efficient, which can significantly reduce labour costs.



## 06

Hygienic

Because large-format porcelain slabs don't need any grout, they contain fewer areas that harbour dirt and grime than traditional tiles. They are also easier to clean.



## 07

Natural & Sustainable

Large-format porcelain tiles are made from natural materials, such as sand, quartz, clay and feldspar, which are designed to emulate natural stone. The slabs contain no toxic resins, chemical binders or substances that could pose a potential health risk to tradespeople or homeowners. They are also sustainable and environmentally friendly.



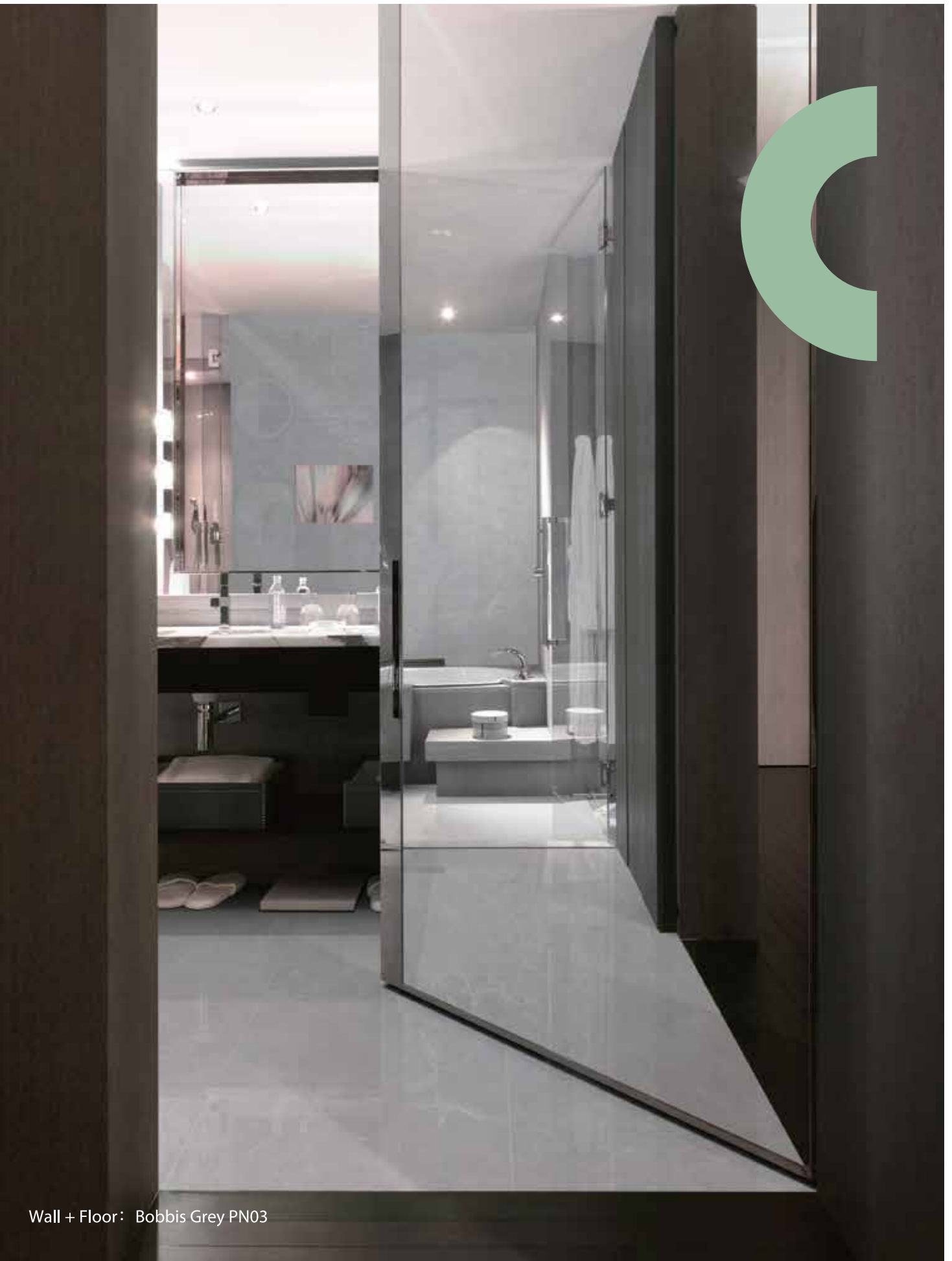


Wall: MXL07

8



Wall: Giza MB05



Wall + Floor: Bobbis Grey PN03



Wall & Floor: Volcanics TY02



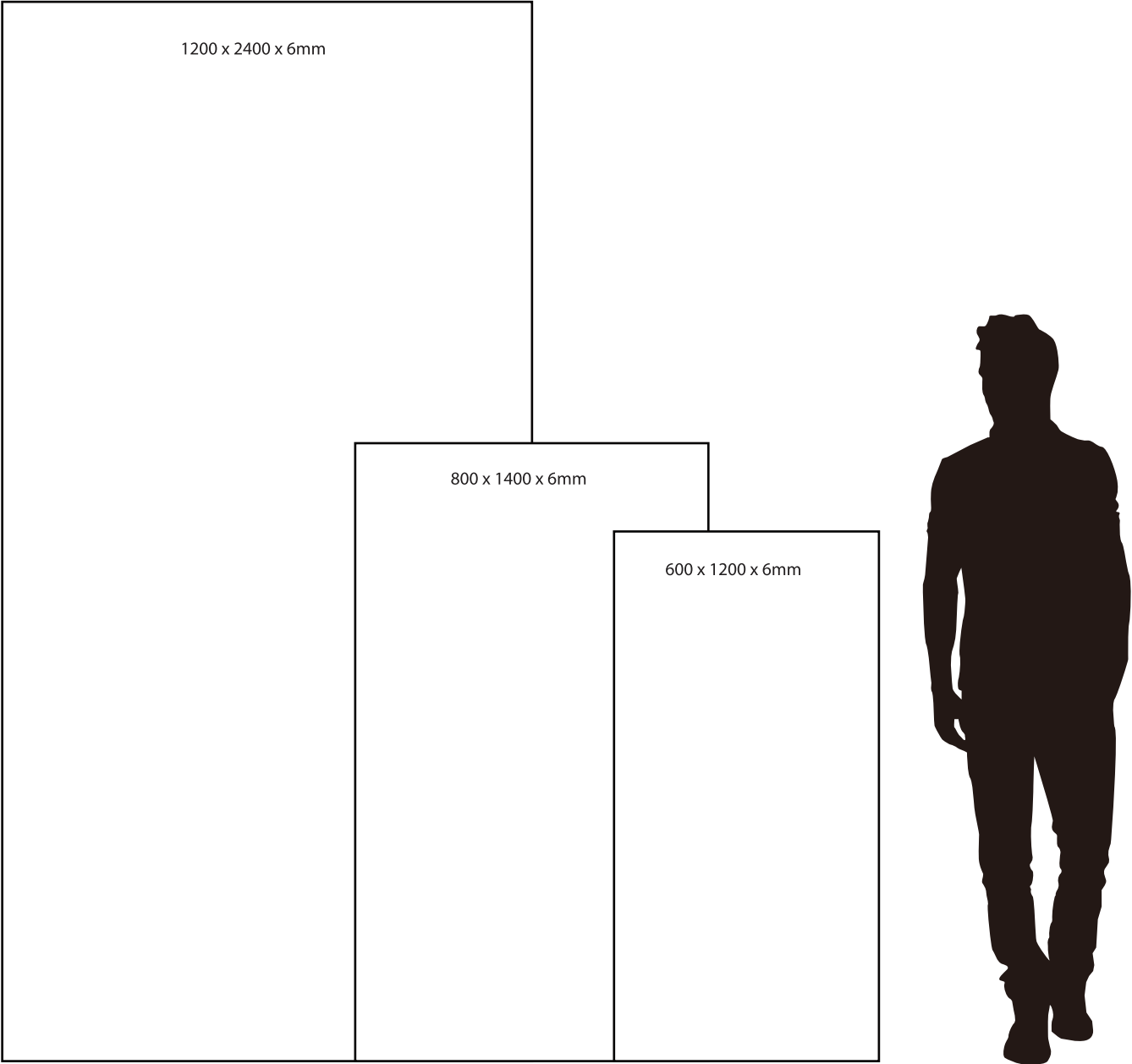
11



# CLASSIC COLLECTION

6mm Thick

12

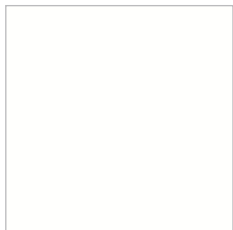


Applications :

- Splashback
- Indoor & Outdoor Cladding
- Indoor & Outdoor Flooring
- Stairs
- Fireplace Surrounds
- BBQ Areas

## 1200 x 2400mm

---



Basaltina  
Matt - MXC01



Basaltina  
Matt - MXY08



Calacatta  
Matt - MXN01



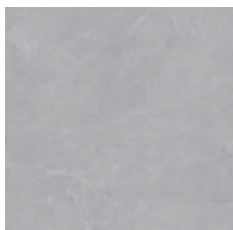
Carajas  
Matt - MXJ01



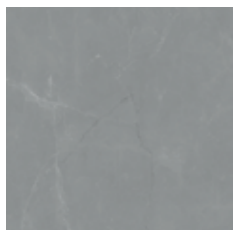
Carajas  
Matt - MXJ02

## 800 x 1400mm

---



Bobbis Grey  
Polished Glaze - PN03



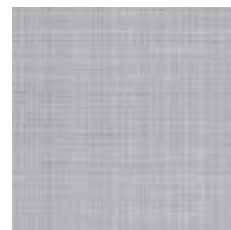
Bobbis Grey  
Polished Glaze - PN04



Calacatta  
Matt - MN01



Giza  
Matt - MB05

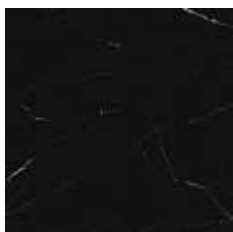


Giza  
Matt - MB06

13

## 600 x 1200mm

---



Black Marquina  
Lappato - SR25



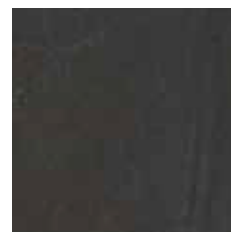
Burlington  
Matt - TU01



Burlington  
Matt - TU02



Burlington  
Matt - TU03



Burlington  
Matt - TU04



Carrara  
Polished Glaze-PN080



Volcanics  
Matt&Textured-TY01



Volcanics  
Matt&Textured-TY02



600 x 1200mm

---



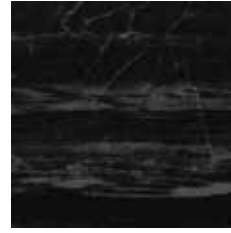
Carajas  
Matt - MN01



Carajas  
Polished Glaze - PN01



Karrara  
Polished Glaze - PN08



Garapa  
Polished Glaze - PN09



Roman  
Polished Glaze - PR38



Roman  
Polished Glaze - PR39



Galaxy Rock  
Matt&Textured - TS01



Galaxy Rock  
Matt&Textured - TS02



Burlington  
Matt&Textured - TU01

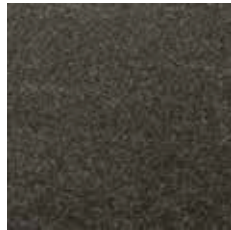


Burlington  
Matt&Textured - TU02

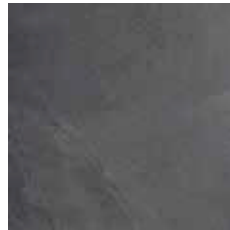
14



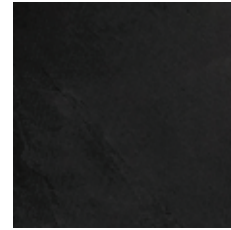
Burlington  
Matt&Textured - TU03



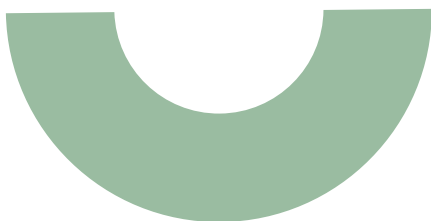
Burlington  
Matt&Textured - TU04



Volcanics  
Granular&Textured - TY01

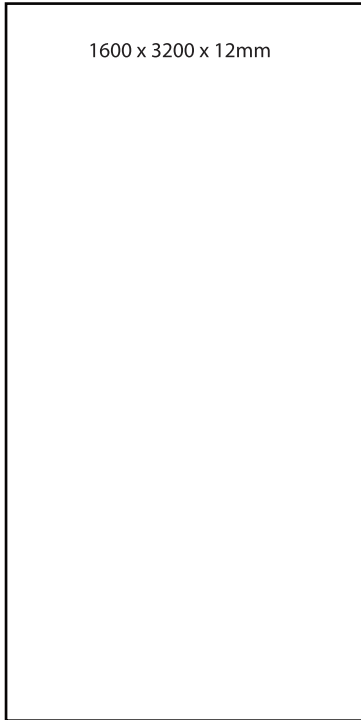


Volcanics  
Granular&Textured - TY02



# EXTRA LARGE COLLECTION

12mm Thick

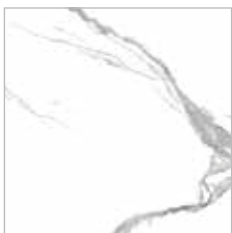


Applications:

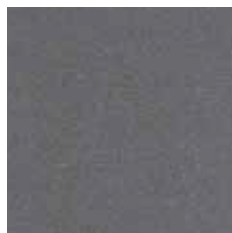
- Benchtops
- Splashback
- Indoor & Outdoor Cladding
- Indoor & Outdoor Flooring
- Stairs
- Fireplace Surrounds
- BBQ Areas

15

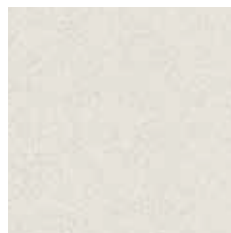
1600 x 3200mm



Pacifica  
Matt - MXL01



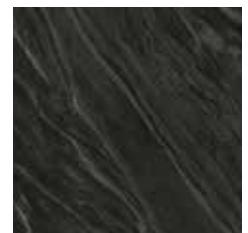
Pacifica  
Matt - MXL02



Pacifica  
Matt - MXL03



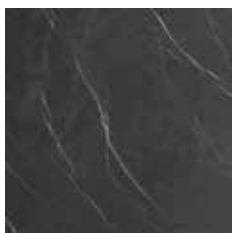
Pacifica  
Matt - MXL05



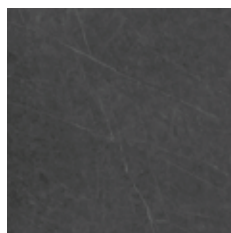
Pacifica  
Matt - MXL06



Pacifica  
Matt - MXL07



Pacifica  
Matt - DB2M64BX-Y



Pacifica  
Matt - DB2M56BX-Y















Pacifica  
Matt - DB2M6AC-Y



Pacifica  
Matt - JC32B966Y2

# SPECIFICATIONS

## PRODUCT DATA

PROPERTIES		GB/T 23266-2009 STANDARD (ON AVERAGE)	ISO INDEX (ON AVERAGE)	SLIMSTONE (ON AVERAGE)
WATER ABSORPTION		≤ 0.5%	≤ 0.5%	0.1%
BREAKING STRENGTH		≥ 800N	≥ 700N	841N
MODULUS OF RUPTURE		≥ 45MPa	≥ 35MPa	56MPa
ABRASION RESISTANCE		≥ CLASS 3 (750 cycles)	-	CLASS 4 (2100 cycles)
THERMAL SHOCK RESISTANCE		NO CRACKING AND SPALLING AFTER TEST	NO CRACKING AND SPALLING AFTER TEST	PASSED
CRAZING RESISTANCE		NO CRACKING AND SPALLING AFTER TEST	NO CRACKING AND SPALLING AFTER TEST	PASSED
FROST RESISTANCE		NO CRACKING AND SPALLING AFTER TEST	NO CRACKING AND SPALLING AFTER TEST	PASSED
CHEMICAL RESISTANCE		NOT LOWER THAN GRADE GB	NOT LOWER THAN GRADE GB	GRADE GA
STAIN RESISTANCE		NOT LOWER THAN CLASS 3	NOT LOWER THAN CLASS 3	CLASS 5
ELASTIC LIMIT		≥ 12mm	-	15mm
ANTI-SLIP SLOPE		≥ 12°	-	12°
SLIP RESISTANCE (DYNAMIC COEFFICIENT OF FRICTION)		-	-	Dry 0.84 - POLISHED Dry 0.71 - MATTE

16

## PACKAGING DETAILS

FINISH	AVAILABLE SIZE	PER BOX		PER PALLET	
		PCS	WEIGHT (KG)	BOXES	WEIGHT (KG)
POLISHED	600×1200×4.8mm	3	25	34	850
MATTE	600×1200×4.8mm	3	25	36	900
POLISHED MATTE	600×1200×6mm	2	20	40	800
	800×1400×6mm	2	32	31	992
	500×1000×6mm	4	29	34	986
	1000×1000×6mm	2	29	32	928

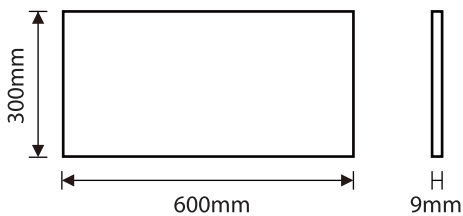
# GLAZED PORCELAIN TILES



FANTACI's porcelain tiles come in a variety of colours, sizes and finishes to suit an array of interiors. Porcelain tiles are a stylish and practical choice for indoor and outdoor walls and floors. Porcelain has a beautifully smooth surface, and its low porosity makes it incredibly durable. The material is also hypoallergenic and stain- and water-resistant. As porcelain doesn't need a sealant or ongoing maintenance, it becomes a smart option for high-traffic, wet areas in bathrooms, kitchens and outdoor entertaining spaces.

## RANGE

1 BOX: 8 Pieces  $\approx$  1.44m<sup>2</sup>



Ice Grey  
T-CE-RE603009AG

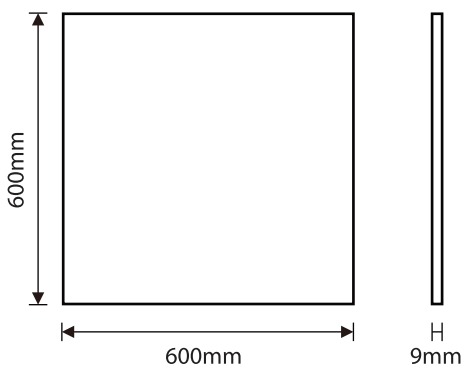


Terrazzo Grey  
T-CE-RE603009DG



Grey Concrete  
T-CE-RE603009MG

1 BOX: 4 Pieces  $\approx$  1.44m<sup>2</sup>



Ice Grey  
T-CE-SQ606009AG



Terrazzo Grey  
T-CE-SQ606009DG



Grey Concrete  
T-CE-SQ606009MG



# CERTIFICATIONS

	<p>Certification that guarantees the productive process and the working environment with high qualitative standard, through constant controls and quality management.</p>
	<p>Certification indicates conformity with health, safety, and environmental protection standards for products sold within the European Economic Area.</p>
	<p>Part of our porcelain products is passed the yearly The United Kingdom Accreditation Service (UKAS) audit, meets the standards required to be UKAS accredited.</p>
	<p>the Health and Safety Laboratory (HSL) carried out the bacterial efficacy testing on the part of our porcelain products, the results proved the porcelain tiles have great antibacterial action with over 95% effective on the most common bacteria.</p>

# TIMBER FLOORING COLLECTION



FANTACI has a beautiful selection of European Oak- and Russian Pine-blended solid timber floorings in various patterns and grains. Our solid timber flooring uses advanced technology to layer the timber in a crisscross fashion, creating greater strength and stability than traditional timber flooring. Solid timber flooring is a favourite among architects and interior designers for its innate character, warmth, durability and versatility. It's also a natural, healthy flooring option, as it doesn't trap dust, pollen or other allergens, thereby improving the home's air quality. All FANTACI's solid hardwood materials are available with PEFC certification.





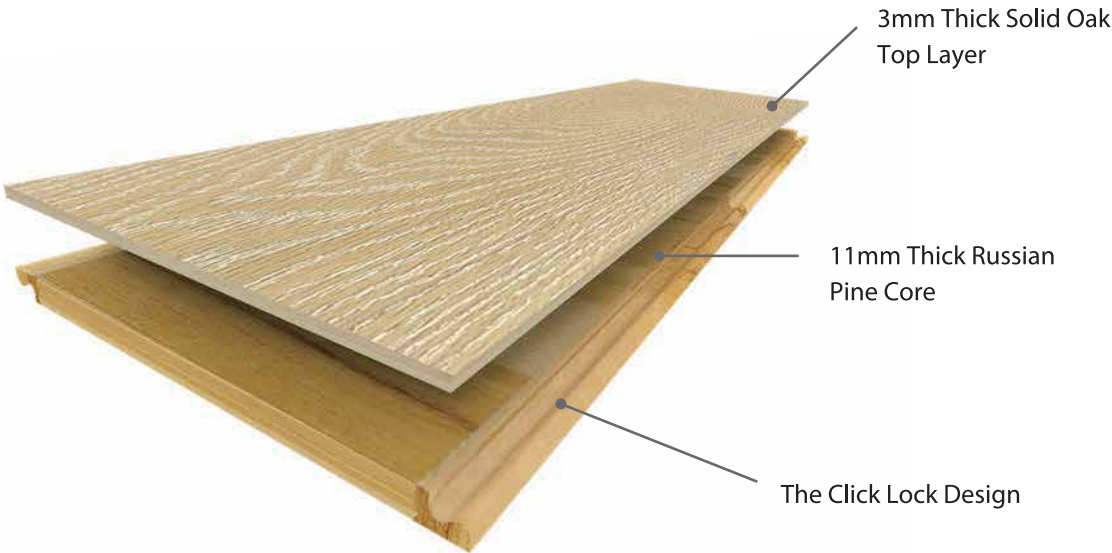
# ADVANTAGES



01

## Unique Two Layers

Our two-layer construction process delivers superior strength and durability compared with traditional hardwood floors. Moreover, our solid timber flooring also has been engineered with intentional gaps between each wood plank, allowing the wood to expand and contract without warping and cupping, reducing swelling and shrinkage even in the harshest climates. By using only two layers of timber, we minimise the use of harsh chemicals, creating a healthier and more natural environment for the home.



02

## Low Maintenance

Our solid timber flooring can be installed in a floating style, reducing installation time and cost. Repairs and replacements are also quick and easy, as no stubborn glue is needed to hold the planks down. Timber is also incredibly easy to clean, requiring only a mop to remove dirt and dust.

03

## Durable and Long Lasting

Hardwood is universally recognized as one of the longest-lasting flooring options, it has proven time and again its strength, durability and long life. Our ranges of timber flooring made with a 3mm thick top hardwood veneer layer, it's likely the floor will support multiple-times resurfacing treatments, which means they can be polished and repaired to restore its original look, giving it a much longer lifespan than most of the engineered wood floorings.

04

## Environmentally Friendly

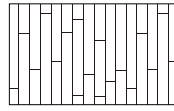
FANTACI is committed to environmentally sustainable practices. To reflect this, all our solid hardwood materials come with Programme for the Endorsement of Forest Certification (PEFC). A PEFC-certified product comes from a forest that is managed in line with the strictest environmental, social and economic requirements—to help ensure that it will be around for generations to come. Natural timber flooring is also more energy-efficient than other surfaces, using less energy during production and installation.

STRIP 1 BOX: 6 Planks  $\approx$  2.12m<sup>2</sup>

HERRINGBONE & CHEVRON 1 BOX:

16 Planks  $\approx$  1.8m<sup>2</sup>

### Filippa



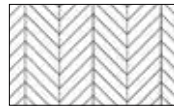
STRIP

1910 x 185 x 14mm  
F-HD-ST191814FI



HERRINGBONE

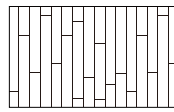
750 x 143 x 14mm  
F-HD-HE751414FI



CHEVRON

770 x 143 x 15mm  
F-EN-CH761515FI

### Boreas



STRIP

1910 x 185 x 14mm  
F-HD-ST191814BO



HERRINGBONE

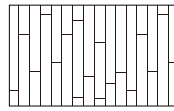
750 x 143 x 14mm  
F-HD-HE751414BO



CHEVRON

770 x 143 x 15mm  
F-EN-CH761515BO

### Morna



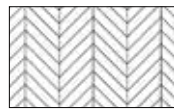
STRIP

1910 x 185 x 14mm  
F-HD-ST191814MO



HERRINGBONE

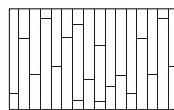
750 x 143 x 14mm  
F-HD-HE751414MO



CHEVRON

770 x 143 x 15mm  
F-EN-CH761515MO

### Alma



STRIP

1910 x 185 x 14 mm  
F-HD-ST191814AL



HERRINGBONE

750 x 143 x 14mm  
F-HD-HE751414AL



CHEVRON

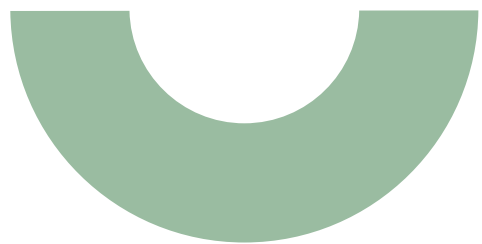
770 x 143 x 15mm  
F-EN-CH761515AL





## BATHROOM





# Bathroom Vanity



Redefine modern elegance and modern craftsmanship

Fantaci bathroom vanity is definitely a representative product. The nodeless design of the countertop makes the cabinet lighter and more flexible. The precise vertical stripes are arranged on the front of the cabinet like a beautiful movement. And the place is full of calmness.

Whether it is a spacious bathroom or a separate small guest bathroom, all Fantaci products can not only meet your style requirements, but also can be perfectly integrated into any environmental building. This is all due to the modular ecosystem product concept that we independently designed and developed.

Keeping inside and outside same quality is the attitude that Fantaci has always adhered to.

The drawer panels, back panels and wherever can be touched are made of high-quality wood, use high quality hardware Hettich drawer runners, so that the wonderful experience is always the same.

Beautiful storage space.

The internal design still looks very private. The use of German Hettich metal drawers makes each opening and closing smoother, the new technology optimization brings a gentle pleasant feeling.

Fantaci's minimalism aesthetics replace the complicated to the simple, pay attention to proportion, to make the space with a pure, placid and timeless aesthetic feeling.

Integrated 90° handle.  
Grooved drawer front.  
Plywood with walnut veneer  
Matte finish, pure white countertop and basin surface



29

## CAL120-V008

Wall Hung Vanity with Regal Acrylic Top - Single Bowl  
Matt White

Cabinet: 1200×500×450mm  
Basin: 1200×500×50mm  
Mirror: 600×35×600mm



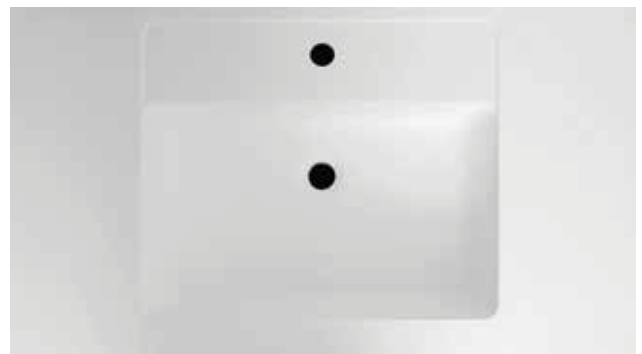


30

## CAL90-V008

Wall Hung Vanity with  
Regal Acrylic Top - Single Bowl  
Matt White

Cabinet: 900×500×450mm  
Basin: 900×500×50mm  
Mirror: 600×35×600mm





31

## CAL160-V008

Wall Hung Vanity with  
Regal Acrylic Top - Double Bowls  
Matt White

Cabinet: 1200x500x450mm

Basin: 1200x500x50mm

Mirror: 1200x35x750mm

Plywood with oak veneer.  
Matte finish, pure white countertop and basin surface.

32

JER90 -V003

Wall Hung Vanity with Regal Acrylic Top - Single Bowl  
Matt White

Cabinet: 1200×500×450mm  
Basin: 895×495×400mm  
Mirror: 1000×40×1000mm



33

Curved grooved brushed gold handle.

Plywood with with natural oak veneer Embedded LED light with human body sensor.

Matte finish, pure white countertop and basin surface.

## OME90 –V007

Wall Hung Vanity with Regal Acrylic Top - Single Bowl  
Matt white

Cabinet: 895×497×450mm

Countertop: 900×500×10mm

Above Counter Basin: 380×380×110mm

Mirror: 900×35×750mm





**OME120-V007 (Vanity)**  
**BW90R-V007 (Mirror Cabinet)**

Wall Hung Vanity with Regal Acrylic Top - Single Bowl  
Matt white

Cabinet: 1195×497×450mm  
Countertop: 1200×500×15mm  
Above Counter Basin: 600×380×110mm  
Mirror Cabinet: 900×150×1000mm



OME180-V007 (Vanity)  
BW90L-V007 & BW90R-V007 (Mirror Cabinet)

Wall Hung Vanity with Regal Acrylic Top - Double Bowls  
Matt white

Cabinet: 1195×497×450mm  
Countertop: 1200×500×15mm  
Above Counter Basin: 600×380×110mm  
Mirror Cabinet: 900×150×1000mm

# BATHROOM TAPWARE

Introducing our stylish bathroom tapware collection with smooth lines and gentle curve. Available in refined gunmetal grey, matte black and brushed brass finishes to infuse a minimalist look to your bathroom in a flash.



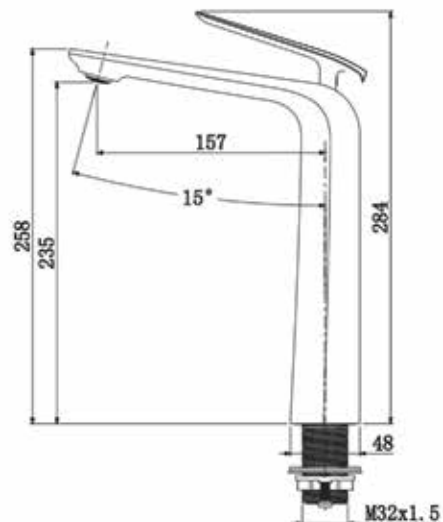
BM-DB-AN432507C  
Basin Mixer | Chrome

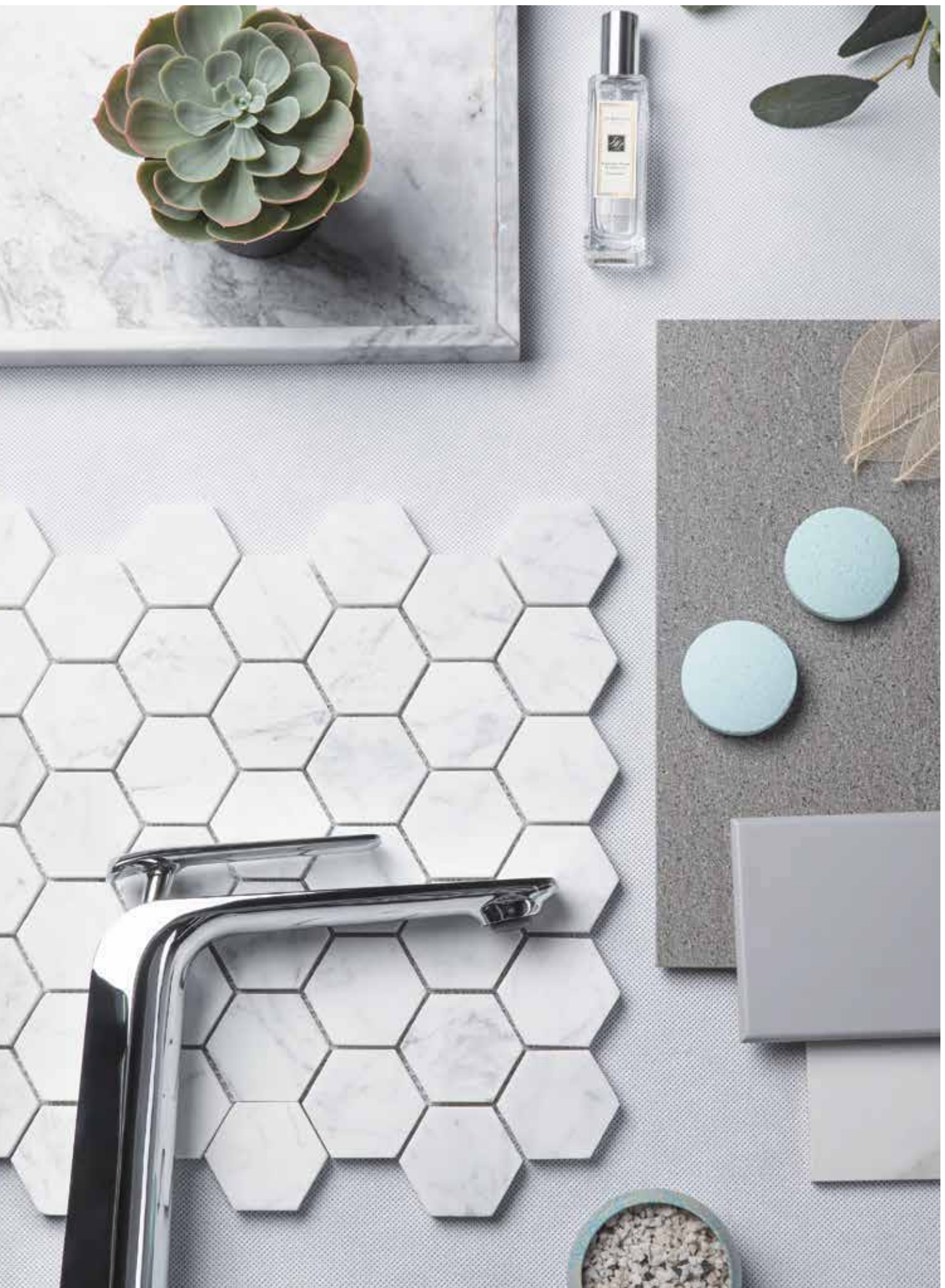


BM-DB-AN432507MB  
Basin Mixer | Matte Black

36

- ◆ WELS 6 Star, 4.5 L/m
- ◆ DZR Brass
- ◆ Volume: 0.008m<sup>3</sup>
- ◆ Pressure Balanced Handle
- ◆ RPR: 50-1200kPA
- ◆ MCWT: 0-90 deg C
- ◆ Cartridge Type: Ceramic
- ◆ Cartridge Size: 25 mm
- ◆ Warranty: 7 Years
- ◆ Inclusions: Hot & Cold Hoses, Aerator, Screw Fitting





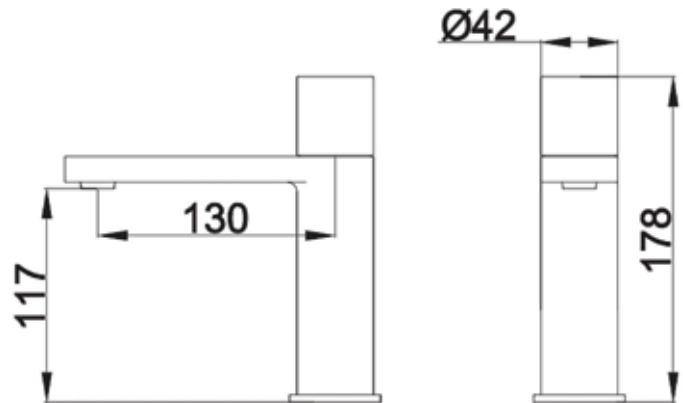




BM-DB-ST291808GB  
Basin Mixer | Brushed Gold

BM-DB-ST291808MB  
Basin Mixer | Matte Black

- ◆ WELS 5 Star, 5 L/m
- ◆ DZR Brass
- ◆ Volume:0.004m3
- ◆ Progressive Handle
- ◆ RPR: 50-1200kPA
- ◆ MCWT: 0-90 deg C
- ◆ Cartridge Type: Ceramic
- ◆ Cartridge Size: 35 mm
- ◆ Warranty: 7 Years
- ◆ Inclusions: Hot & Cold Hoses,Aerator, Screw Fitting



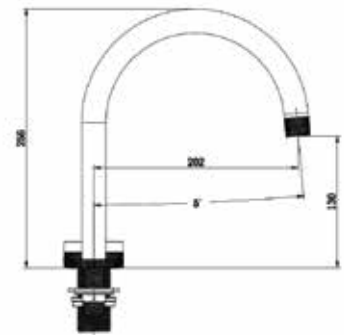
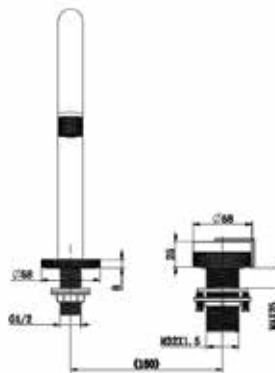


BM2013STMB

Granite Marble Handle 2 Holes Deck Mounted Mixer | Matte Black

39

- ◆ WELS 5 Star, 5 L/m
- ◆ DZR Brass + marble stone
- ◆ Volume: 0.004m<sup>3</sup>
- ◆ Progressive Handle
- ◆ RPR: 50-1200kPA
- ◆ MCWT: 0-90 deg C
- ◆ Cartridge Type: Ceramic
- ◆ Cartridge Size: 35 mm
- ◆ Warranty: 7 Years
- ◆ Inclusions: Hot & Cold Hoses, Aerator, Screw Fitting





40

KM2218GM  
Basin Mixer | Gun metal



- ◆ WELS 5 Star, 5 L/m
- ◆ DZR Brass + marble stone
- ◆ Volume:0.004m<sup>3</sup>
- ◆ Progressive Handle
- ◆ RPR: 50-1200kPA
- ◆ MCWT: 0-90 deg C
- ◆ Cartridge Type: Ceramic
- ◆ Cartridge Size: 35 mm
- ◆ Warranty: 7 Years
- ◆ Inclusions: Hot & Cold Hoses,Aerator, Screw Fitting

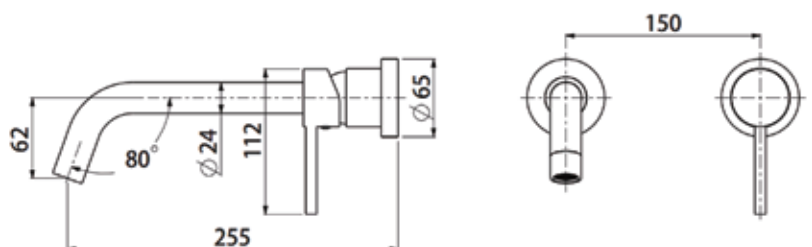


BM-DB-IW291808GM  
Wall Mixer Set | Gun metal



BM-DB-IW291808MB  
Wall Mixer Set | Matte Black

- ◆ WELS 5 Star, 6 L/m
- ◆ DZR Brass
- ◆ Volume:0.004m<sup>3</sup>
- ◆ Pressure Balanced Handle
- ◆ RPR: 50-1200kPA
- ◆ MCWT: 0-90 deg C
- ◆ Cartridge Type: Ceramic
- ◆ Cartridge Size: 35 mm
- ◆ Warranty: 7 Years
- ◆ Inclusions: Hot & Cold Hoses,Aerator, Screw Fitting



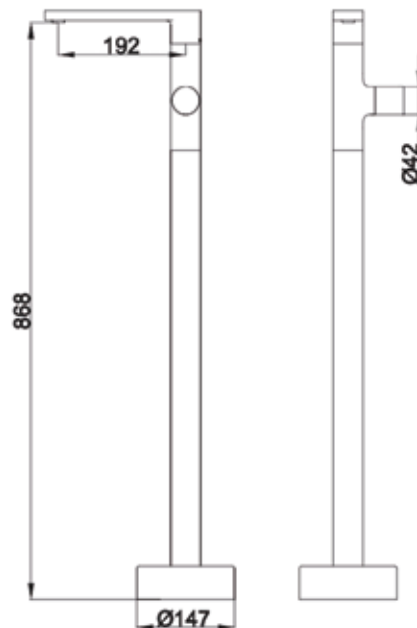


42

FSM-DB-SI763207C  
Floor Mounted Mixer | Chrome

FSM-DB-SI763207MB  
Floor Mounted Mixer | Matte Black

- ◆ DZR Brass
- ◆ Volume: 0.018m<sup>3</sup>
- ◆ Progressive Handle
- ◆ RPR: 50-1200kPA
- ◆ MCWT: 0-90 deg C
- ◆ Cartridge Type: Ceramic
- ◆ Cartridge Size: 35 mm
- ◆ Warranty: 7 Years



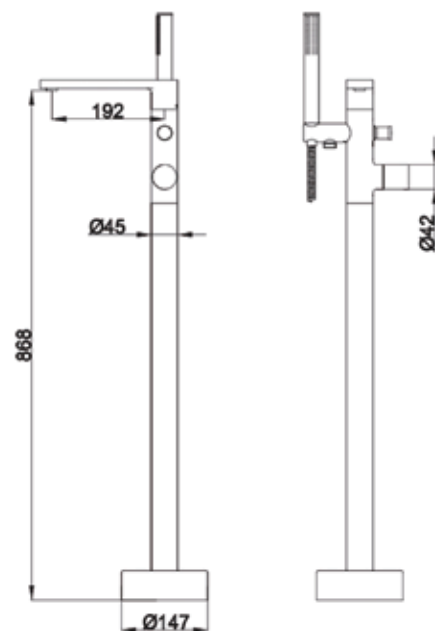


FSM-DB-TW763207GB  
 Floor Mounted Mixer with Head  
 Shower | Brushed Gold



FSM-DB-TW763207MB  
 Floor Mounted Mixer with Head  
 Shower | Matte Black

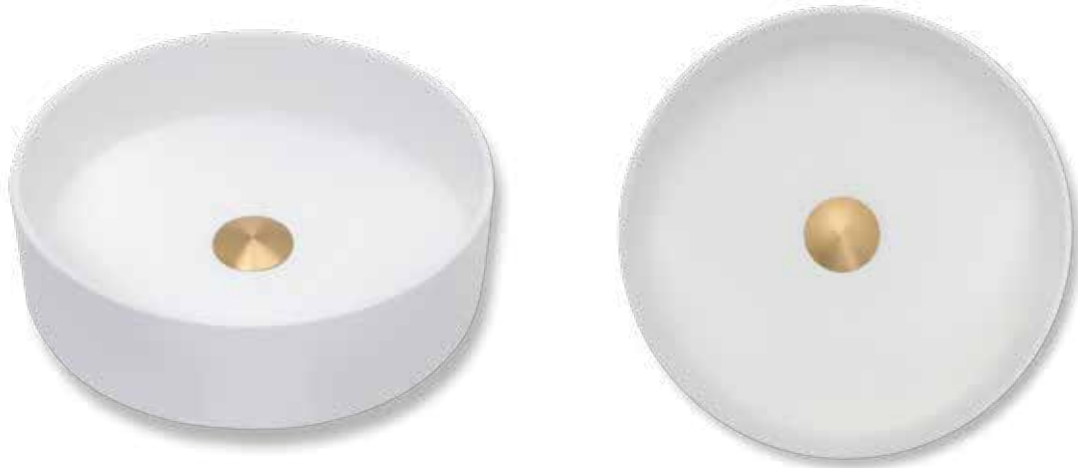
- ◆ DZR Brass
- ◆ Volume: 0.018m<sup>3</sup>
- ◆ Progressive Handle
- ◆ RPR: 50-1200kPA
- ◆ MCWT: 0-90 deg C
- ◆ Cartridge Type: Ceramic
- ◆ Cartridge Size: 35 mm
- ◆ Warranty: 7 Years



# BASINS



Our collection of sophisticated, elegant bathroom basins embodies sleek and precise styling with neat, minimalist design. Available in numerous styles and will perfectly complement any contemporary designer-friendly bathroom.

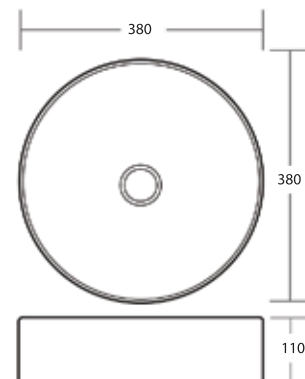


44

BA-AC-RO383811W

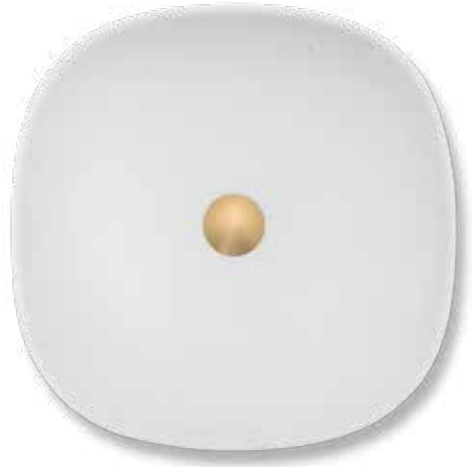
Round Above Counter Top Basin | Matte White

- ◆ 380 × 380 × 110mm
- ◆ Weight: 6.8 kg
- ◆ Material: Acrylic Resin
- ◆ Warranty: 5 Years
- ◆ Waste: Sold Separately







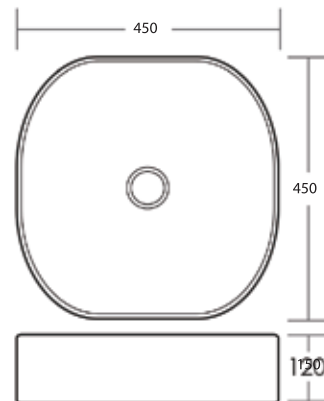


46

BA-AC-SQ454515W

Omega Square Above Counter Top Basin | Matte White

- ◆ 450 × 450 × 150mm
- ◆ Weight: 8.3 kg
- ◆ Material: Acrylic Resin
- ◆ Warranty: 5 Years
- ◆ Waste: Sold Separately

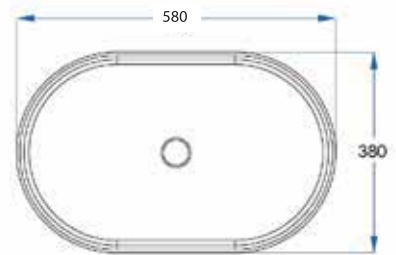


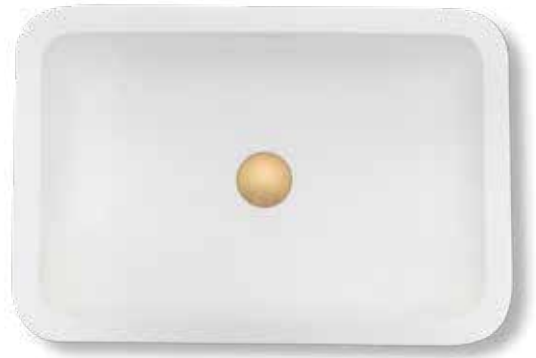


BA-AC-EL583811W

Oval Above Counter Top Basin | Matte White

- ◆ 580 × 380 × 110mm
- ◆ Weight: 12.3kg
- ◆ Material: Acrylic Resin
- ◆ Warranty: 5 Years
- ◆ Waste: Sold Separately

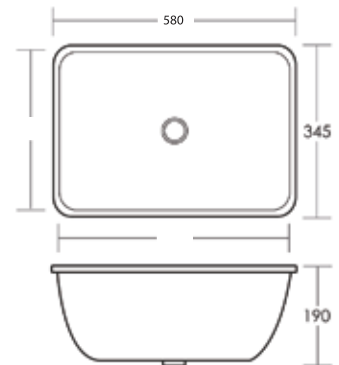




48

BA-AC-RE563816W  
Rectangular Under Counter Basin | Matte White

- ◆ 580 × 380 × 160mm
- ◆ Weight: 12.3kg
- ◆ Material: Acrylic Resin
- ◆ Warranty: 5 Years
- ◆ Waste: Sold Separately

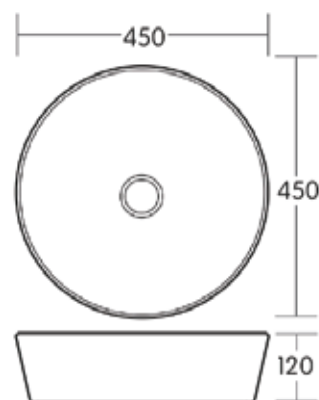




R94545

Round Above Counter Basin | Matte Grey

- ◆ 450 × 450 × 120mm
- ◆ Weight: 8.3kg
- ◆ Material: Acrylic Resin
- ◆ Warranty: 5 Years
- ◆ Waste: Sold Separately



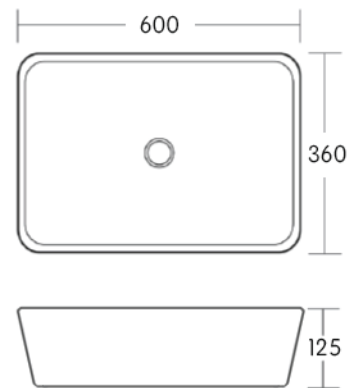


50

R96036

Rectangular Above Counter Basin | Matte Brown

- ◆ 600 × 360 × 125mm
  - ◆ Weight: 12.3kg
  - ◆ Material: Acrylic Resin
  - ◆ Warranty: 5 Years
- Waste: Sold Separately





Matte Black



Brushed Gold



Chrome

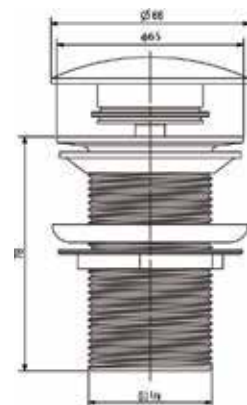


Gunmetal Grey

BW-BR-RO100707MB

Pop-Up Basin Waste | Matte Black/Brushed  
Gold/Chrome/Gunmetal Grey

- ◆ Finished diameter 66mm
- ◆ Universal 32mm/40mm
- ◆ Adjustable depth / thickness
- ◆ Weight: 0.26kg
- ◆ Material: Brass

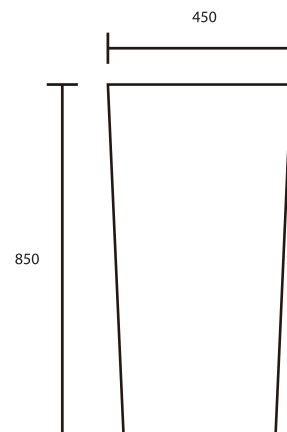




52

BA-AC-FS854545W  
Round Freestanding Pedestal Basin | Matte White

- ◆ 450 × 450 × 850mm
- ◆ Weight: 44kg
- ◆ Material: Acrylic Resin
- ◆ Warranty: 5 Years
- ◆ Waste: Sold Separately







# WALL SHOWERS



Experience the invigorating difference of a FANTACI shower. Available in an array of beautiful colours and styles to suit every contemporary bathroom. Made from premium quality solid brass with refined, balanced proportions.

54



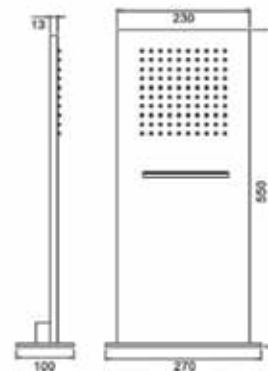
SHC-DB-IW623015C

Overhead Wall Mounted Shower | Chrome

SHC-DB-IW623015MB

Overhead Wall Mounted Shower | Matte Black

- ◆ Brass
- ◆ Weight: 5.89g
- ◆ RPR: 50-1200kPA
- ◆ MCWT: 0-90 deg C
- ◆ Warranty: 7 Years



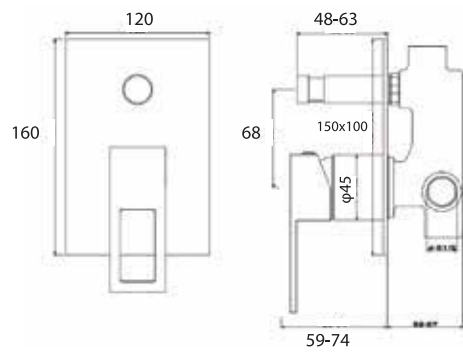




SMC-DB-IW211310C  
Shower Mixer Tap | Chrome

SMC-DB-IW211310MB  
Shower Mixer Tap | Matte Black

- ◆ Brass
- ◆ Volume: 0.001m<sup>3</sup>
- ◆ RPR: 50-1200kPA
- ◆ MCWT: 0-90 deg C
- ◆ Cartridge Type: Ceramic
- ◆ Cartridge Size: 35 mm
- ◆ Warranty: 7 Years



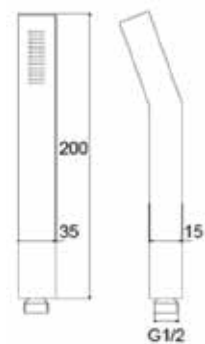


HSC-DB-IW203015C  
Handshower | Chrome



HSC-DB-IW203015MB  
Handshower | Matte Black

- ◆ WELS 2 Star, 10 L/m
- ◆ Brass
- ◆ Weight: 0.86kg
- ◆ RPR: 50-1200kPA
- ◆ MCWT: 0-90 deg C
- ◆ Hose Material: 304 Stainless Steel
- ◆ Warranty: 7 Years





SS-DB-SET583307GM

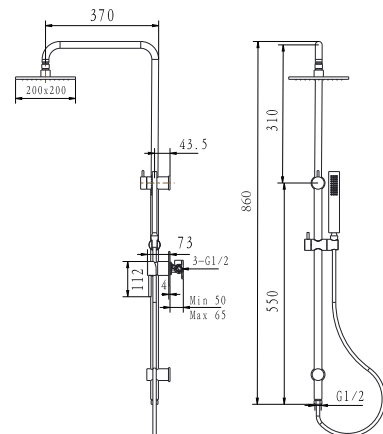
Twin Rail Shower Set | Gunmetal Grey



SS-DB-SET583307MB

Twin Rail Shower Set | Matte Black

- ◆ WELS 3 Star, 9 L/m
- ◆ Brass
- ◆ Weight: 3.62kg
- ◆ RPR: 50-1200kPA
- ◆ MCWT: 0-90 deg C
- ◆ Hand Shower Rose
- ◆ Size of Shower Head: 196 x 196 x 6mm (8 inch)
- ◆ Rail Length: 860mm
- ◆ Hose Length: 1500mm
- ◆ Hose Material: 304 Stainless Steel
- ◆ Warranty: 7 Years



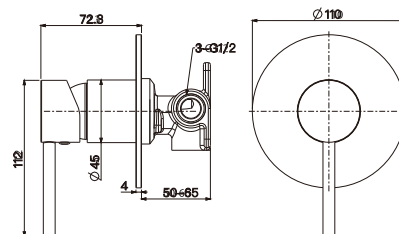


SS-DB-SET583307GM-1  
Shower Mixer Tap | Gunmetal Grey



SS-DB-SET583307MB-1  
Shower Mixer Tap | Matte Black

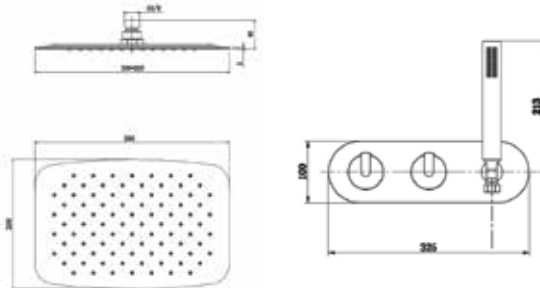
- ◆ Brass
- ◆ Volume: 0.005m<sup>3</sup>
- ◆ RPR: 50-1200kPA
- ◆ MCWT: 0-90 deg C
- ◆ Cartridge Type: Ceramic
- ◆ Cartridge Size: 35 mm
- ◆ Warranty: 7 Years





SHS213STB  
Granite Shower Mixer 2 In 1 Shower Set | Matte Black

- ◆ WELS 2 Star, 10 L/m
- ◆ Brass + marble stone
- ◆ Weight:0.86kg
- ◆ RPR: 50-1200kPA
- ◆ MCWT: 0-90 deg C
- ◆ Hose Material: 304 Stainless Steel
- ◆ Warranty: 7 Years



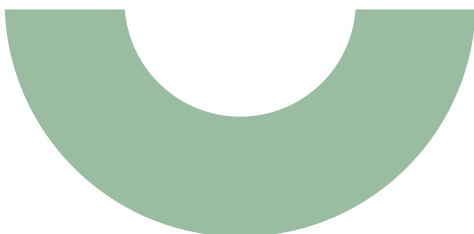
# ACRYLIC FREESTANDING BATHS







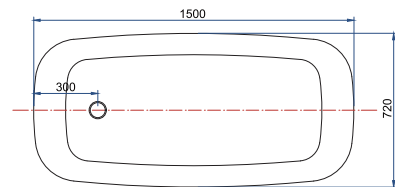
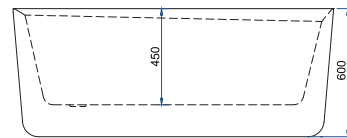
Clean, elegant, and contained, our acrylic bath range is designed for the contemporary bathroom, provides strong, yet lightweight, options in beautiful styles with soft curves and rich detailing. Featuring a sophisticated matte white finish with the natural appeal of smoothly stone. The freestanding design creates a striking focal point in your bathing area, expresses contemporary simplicity.





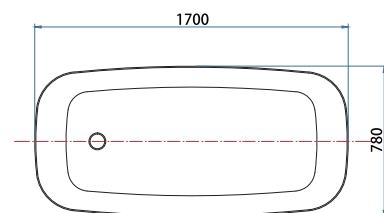
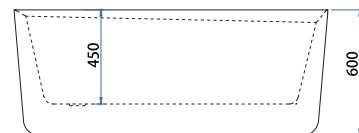
92572MATT (1500 x 720 x 620mm)  
Acrylic Freestanding Bath | Matte White

- ◆ Volume: 0.75m<sup>3</sup>
- ◆ Weight: 36kg
- ◆ Capacity: 200ltr
- ◆ Waste Size: 53mm
- ◆ Plug & Waste Included
- ◆ Warranty: 5 Years



92778MATT (1700 x 780 x 620mm)  
Acrylic Freestanding Bath | Matte White

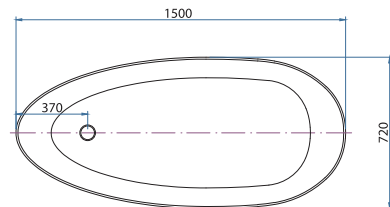
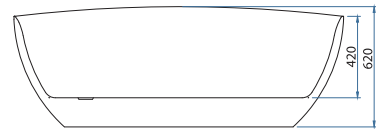
- ◆ Volume: 0.91m<sup>3</sup>
- ◆ Weight: 42kg
- ◆ Capacity: 240ltr
- ◆ Waste Size: 53mm
- ◆ Plug & Waste Included
- ◆ Warranty: 5 Years





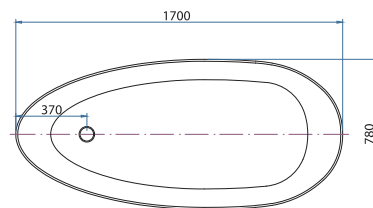
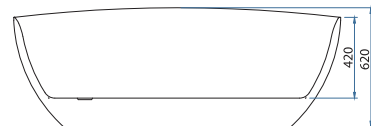
94572MATT (1530 x 720 x 600mm)  
Acrylic Freestanding Bath | Matte White

- ◆ Volume: 0.72m<sup>3</sup>
- ◆ Weight: 41kg
- ◆ Capacity: 200ltr
- ◆ Waste Size: 53mm
- ◆ Plug & Waste Included
- ◆ Warranty: 5 Years



94778MATT (1730 x 800 x 600mm)  
Acrylic Freestanding Bath | Matte White

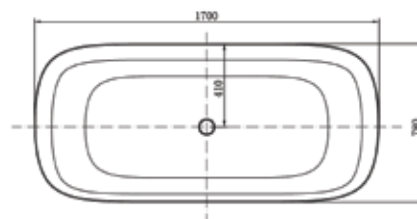
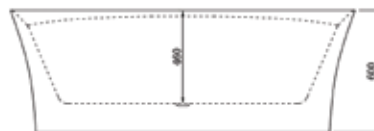
- ◆ Volume: 0.9m<sup>3</sup>
- ◆ Weight: 47kg
- ◆ Capacity: 240ltr
- ◆ Waste Size: 53mm
- ◆ Plug & Waste Included
- ◆ Warranty: 5 Years





BT151778 (1700x 780 x 600mm)  
Acrylic Freestanding Bath | Matte White

- ◆ Volume: 0.89m<sup>3</sup>
- ◆ Weight: 47kg
- ◆ Capacity: 240ltr
- ◆ Waste Size: 53mm
- ◆ Plug & Waste Included
- ◆ Warranty: 5 Years

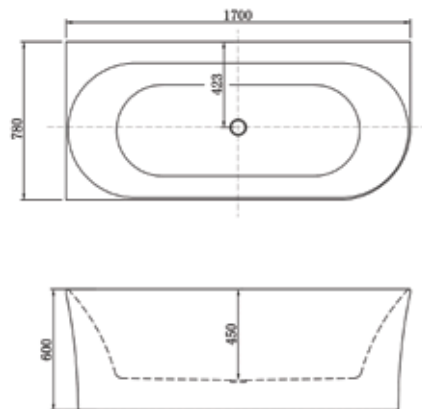




66

BT139778R (1700 x 780 x 600mm)  
Acrylic Freestanding Bath | Matte White

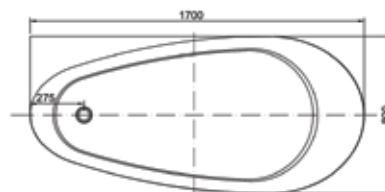
- ◆ Volume: 0.89m<sup>3</sup>
- ◆ Weight: 47kg
- ◆ Capacity: 240ltr
- ◆ Waste Size: 53mm
- ◆ Plug & Waste Included
- ◆ Warranty: 5 Years





BT117780 (1700 x 780 x 580mm)  
Acrylic Freestanding Bath | Matte White

- ◆ Volume: 0.9m<sup>3</sup>
- ◆ Weight: 47kg
- ◆ Capacity: 240ltr
- ◆ Waste Size: 53mm
- ◆ Plug & Waste Included
- ◆ Warranty: 5 Years





# TOILET SUITES



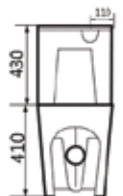
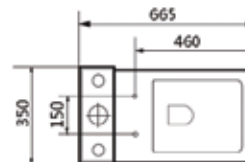
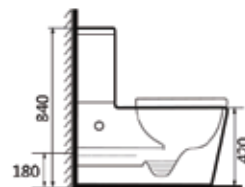
Our modern range of toilet suites include floor-mounted toilet and wall hung pan. All toilet suites comply with the Australian Water Efficiency Labelling Scheme (WELS; achieving a high 4 Star rating) and Australian manufacturing standards under a Watermark licence and are all carefully selected to complement the FANTACI range of basins and bathtubs.



TS-CE-BW704545

Floor Mounted Toilet Suite with Slim Seat

- ◆ WELS Rating: 4 Star (4.5 Ltrs Full Flush, 3 Ltrs Half Flush)
- ◆ 665 × 350 × 840mm
- ◆ Weight: 39.2kg
- ◆ Weight Of Cistern: 14.1kg
- ◆ P Trap Setout: 180mm
- ◆ Material: Ceramic
- ◆ Finish: Gloss
- ◆ Toilet Seat: Slimline Soft- Close Seat and Quick Release
- ◆ Warranty: 5 Years





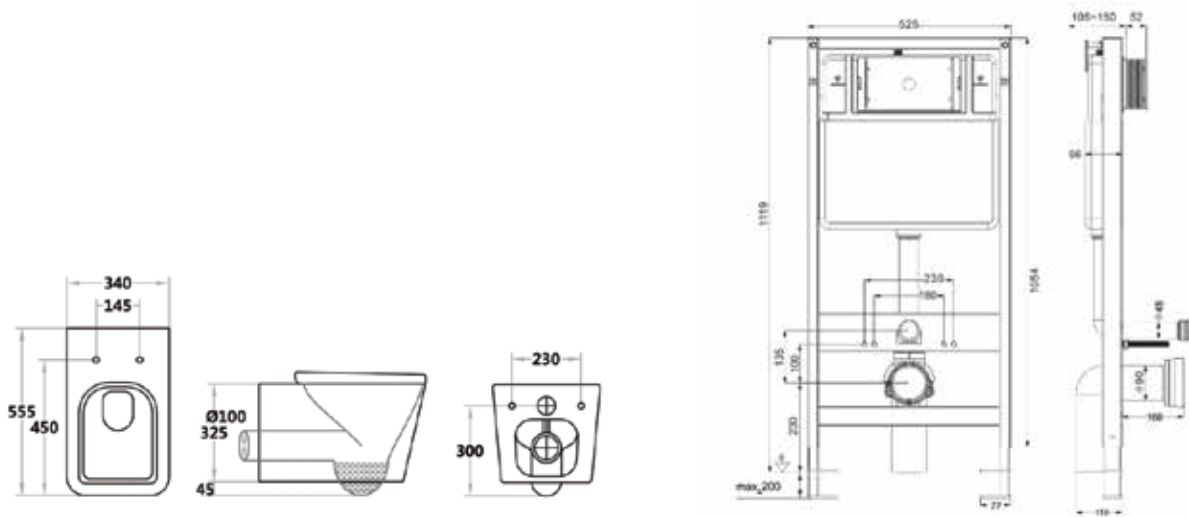


- ◆ WELS Rating: 4 Star (4.5 Ltrs Full Flush, 3 Ltrs Half Flush)
- ◆ Size: 58 × 46 × 40 mm
- ◆ Size of In-wall Tank: 111 × 54.5 × 10.5 mm
- ◆ Weight: 29.6 kg
- ◆ Weight Of In-wall Tank: 14.36 kg
- ◆ P Trap Setout: 180 mm
- ◆ Material: Ceramic
- ◆ Finish: Gloss
- ◆ Material of In-wall Tank: Metal Frame + Chrome Panel
- ◆ Toilet Seat: Slimline Soft-Close Seat and Quick Release
- ◆ Warranty: 5 Years

70

TS-CE-IW574343-T + TS-CE-IW574343-C

Wall Hung Pan with Slim Seat (In-wall tank is included)



# MIRRORS



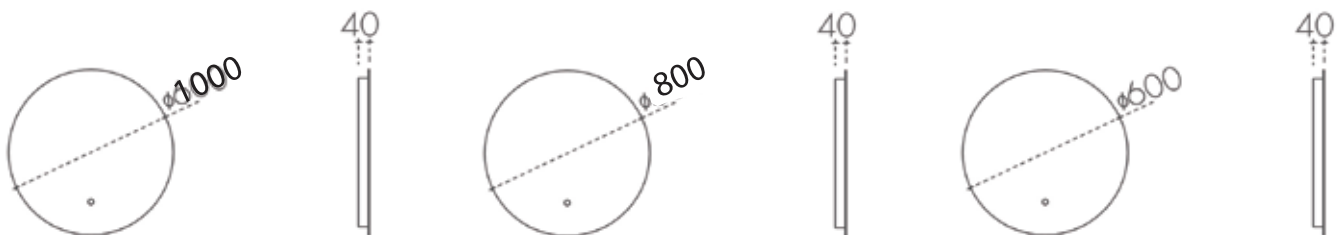
No bathroom is complete without mirrors. FANTACI's collection of LED mirrors are simplicity and elegance combined, features finely polished, beautifully rounded design. The LED lights radiating from behind the rounded shaped wall mirror and shine at a brilliant, pure white, providing optimal lighting for your daily needs.



M-LED-RO101040 (1000 mm) | BEL80RM (800 mm) | LIN60RM(600 mm)

Frameless Round Mirror with LED Backlight

- ◆ 1000 × 1000 × 40mm | 800×800×40mm | 600×600×40mm
- ◆ Weight: 12.94kg | 12kg | 11kg
- ◆ Copper-free silver mirror
- ◆ LED light, screen touch
- ◆ Voltage: 12V
- ◆ Wattage: 60W
- ◆ Warranty: 12 Months

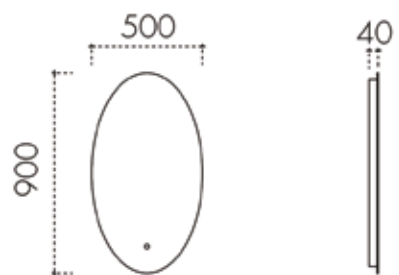


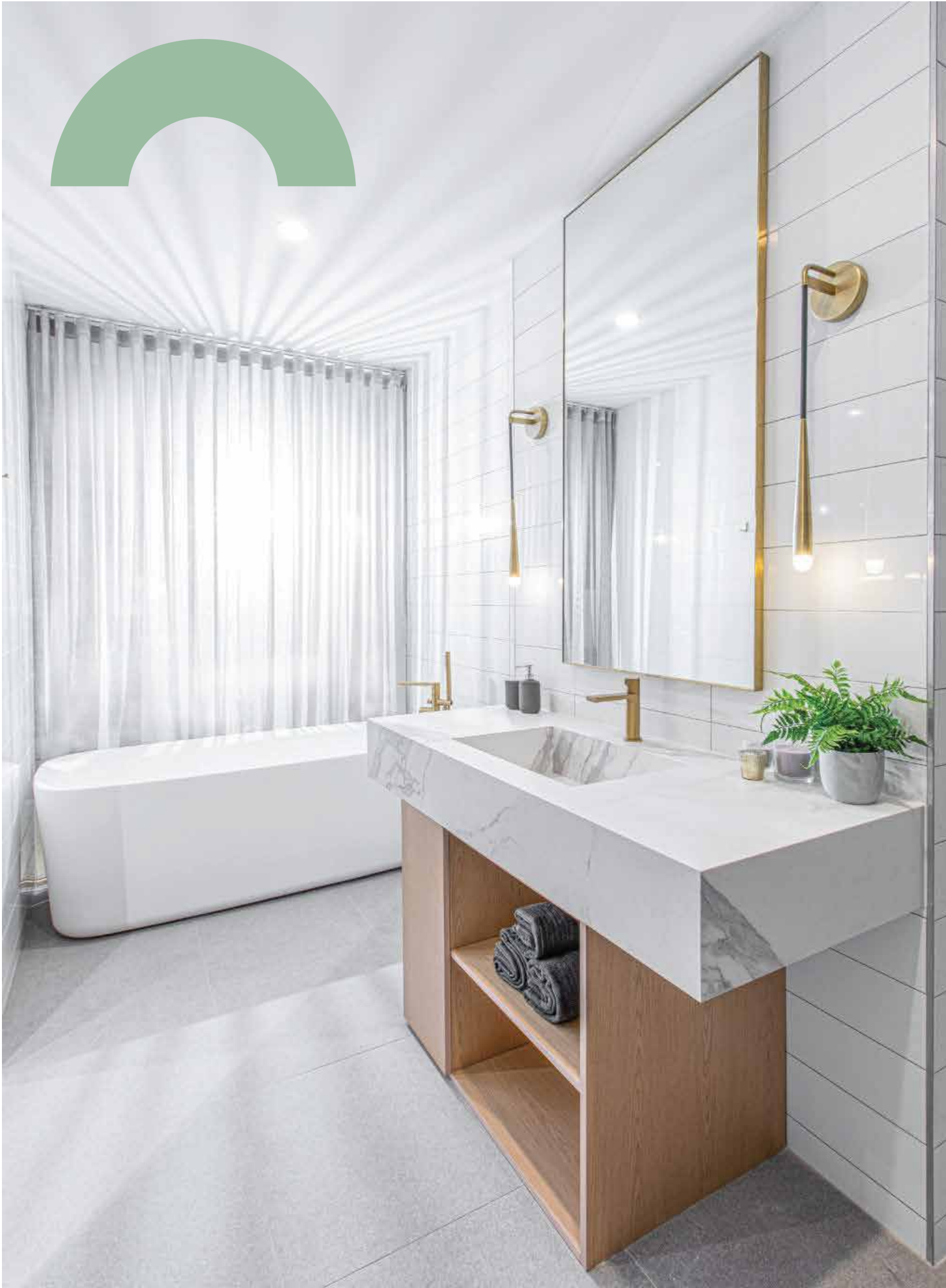




M-LED-EL905040  
Frameless Oval LED Mirror

- ◆ 500×900×40mm
- ◆ Weight: 11.5kg
- ◆ Copper-free silver mirror
- ◆ LED light, screen touch
- ◆ Voltage: 12V
- ◆ Wattage: 60W
- ◆ Warranty: 12 Months



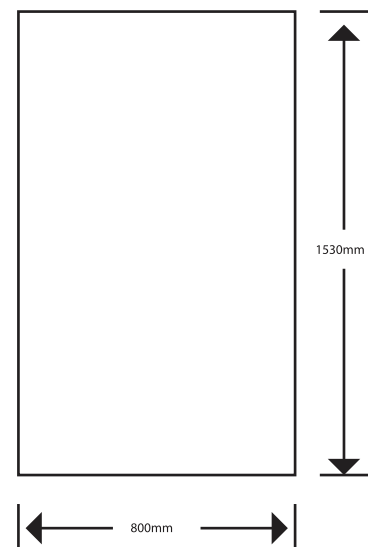


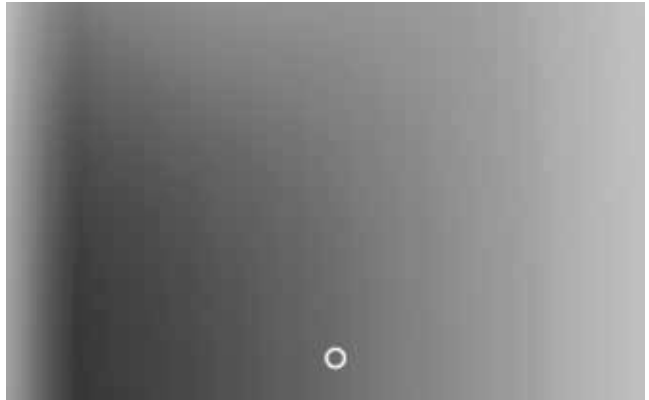
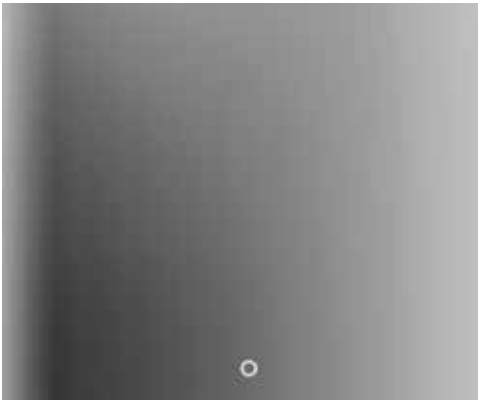


M-RC15080

Extra Large Brass Framed Wall Mirror

- ◆ 1530×800×40mm
- ◆ Weight: 15.5kg
- ◆ Warranty: 12 Months
- ◆ Designed for wall hanging
- ◆ Does not require professional installation
- ◆ Materials: metal, glass

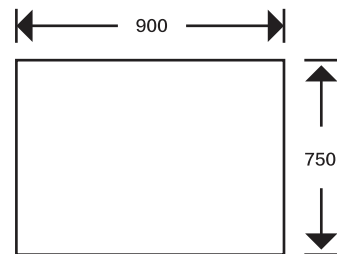




FM9075

Frameless copper free mirror / surrounding LED light

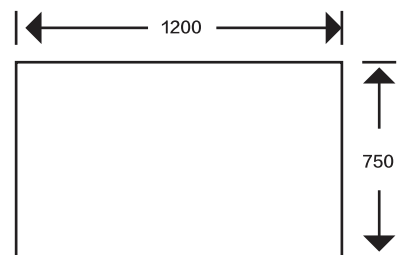
- ◆ 900×750×35mm
- ◆ Weight: 12kg
- ◆ Copper-free silver mirror
- ◆ LED light, screen touch
- ◆ Voltage: 12V
- ◆ Wattage: 60W
- ◆ Warranty: 12 Months



FM9075

Frameless copper free mirror / surrounding LED light

- ◆ 1200×750×35mm
- ◆ Weight: 13.2kg
- ◆ Copper-free silver mirror
- ◆ LED light, screen touch
- ◆ Voltage: 12V
- ◆ Wattage: 60W
- ◆ Warranty: 12 Months







# BATHROOM ACCESSORIES

Transform your bathroom into the most exquisite room in your home thanks to our exclusive collection of designer towel rails, robe hooks, soap dishes, and other modern bathroom accessories. All of our accessories are manufactured by our reputable partners to comply with Australia's high-quality standards.

78



BA-BRS-TRL-708022C  
Single Towel Rail | Chrome



BA-BRS-TRL-708022MB  
Single Towel Rail | Matte Black

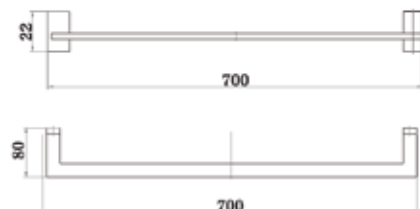


BA-BRS-TRL-708022GB  
Single Towel Rail | Gold

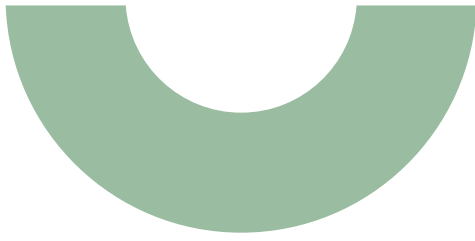


BA-BRS-TRL-708022GM  
Single Towel Rail | Gunmetal Grey

- ◆ 700×80×22mm
- ◆ Weight: 500g
- ◆ Material: Brass
- ◆ Wall Mounted
- ◆ Warranty: 5 Years





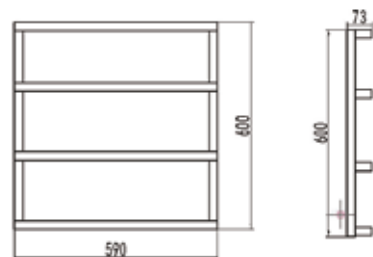


80

BA-BRS-TL-596073C  
Towel Ladder | Chrome

BA-BRS-TL-596073MB  
Towel Ladder | Matte Black

- ◆ 590×73×600mm
- ◆ Weight: 2100g
- ◆ Material: Brass
- ◆ Wall Mounted
- ◆ Warranty: 5 Years





BA-BRS-GS-551550C  
Glass Shelf | Chrome



BA-BRS-GS-551550MB  
Glass Shelf | Matte Black



BA-BRS-GS-551550GB  
Glass Shelf | Gold



BA-BRS-GS-551550GM  
Glass Shelf | Gunmetal Grey

- ◆ 556×152×50mm
- ◆ Weight: 1445g
- ◆ Material: Brass + Toughened Safety Glass
- ◆ Wall Mounted
- ◆ Warranty: 5 Years





BA-BRS-RHS-605022C  
Robe Hook | Chrome



BA-BRS-RHS-605022MB  
Robe Hook | Matte Black



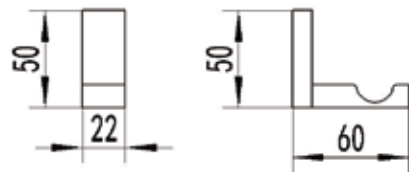
BA-BRS-RHS-605022GB  
Robe Hook | Gold



BA-BRS-RHS-605022GM  
Robe Hook | Gunmetal Grey

82

- ◆ 22x60x50mm
- ◆ Weight: 94g
- ◆ Material: Brass
- ◆ Wall Mounted
- ◆ Warranty: 5 Years





BA-BRS-TRHL-178050C  
Toilet Roll Holder | Chrome



BA-BRS-TRHL-178050MB  
Toilet Roll Holder | Matte Black

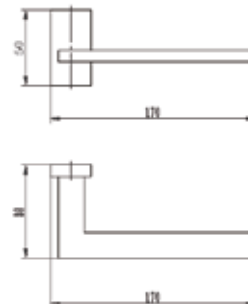


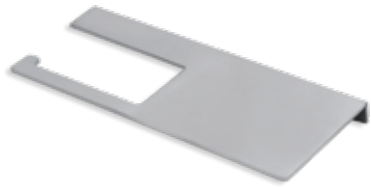
BA-BRS-TRHL-551550GB  
Toilet Roll Holder | Gold



BA-BRS-TRHL-551550GM  
Toilet Roll Holder | Gunmetal Grey

- ◆ 170×50×80mm
- ◆ Weight: 166g
- ◆ Material: Brass
- ◆ Wall Mounted
- ◆ Warranty: 5 Years





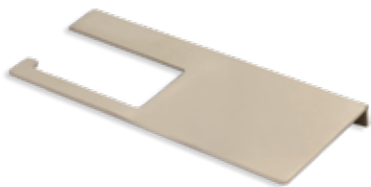
BA-BRS-TRHS-291125C

Toilet Paper Roll Holder with Shelf | Chrome



BA-BRS-TRHS-291125MB

Toilet Paper Roll Holder with Shelf | Matte Black



BA-BRS-TRHS-291125GB

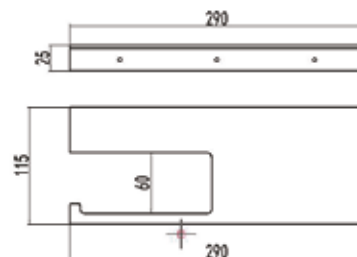
Toilet Paper Roll Holder with Shelf | Gold



BA-BRS-TRHS-291125GM

Toilet Paper Roll Holder with Shelf | Gunmetal Grey

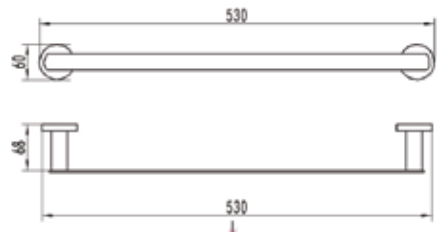
- ◆ 290x115x25mm
- ◆ Weight: 850g
- ◆ Material: Brass
- ◆ Wall Mounted
- ◆ Warranty: 5 Years





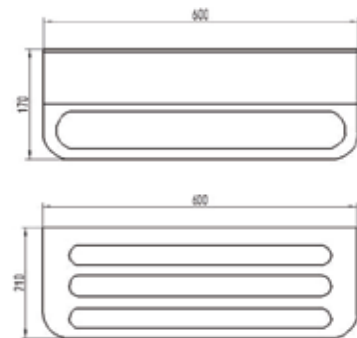
**BA-SS-TRS-536860MB**  
Single Towel Rail | Matte Black

- ◆ 530×68×60mm
- ◆ Weight: 632g
- ◆ Material: 304 Stainless Steel
- ◆ Wall Mounted
- ◆ Warranty: 5 Years



**BA-SS-TR-602117MB**  
Overhead Towel Rack | Matte Black

- ◆ 600 × 210 × 170mm
- ◆ Weight: 2500g
- ◆ Material: 304 Stainless Steel
- ◆ Wall Mounted
- ◆ Warranty: 5 Years

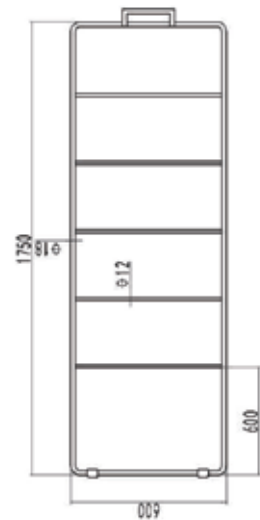






BA-SS-TLS-186019MB  
Freestanding Towel Ladder | Matte Black

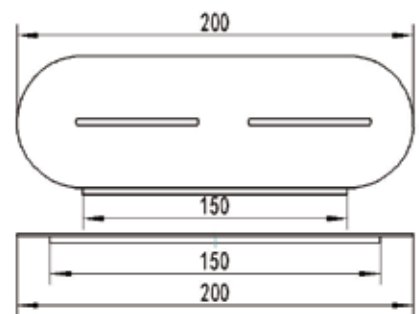
- ◆ 1800 × 600 × 19mm
- ◆ Weight: 2000g
- ◆ Material: 304 Stainless Steel
- ◆ Warranty: 5 Years





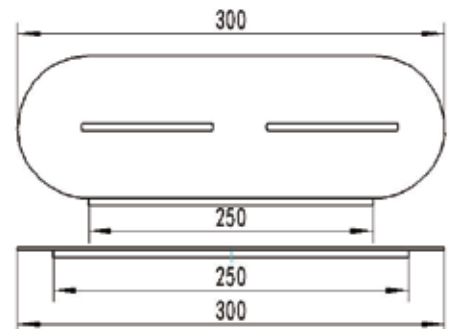
BA-SS-RSS-208842MB (200mm)  
Wall Mounted Metal Shelf | Matte Black

- ◆ 200×88×42mm
- ◆ Weight: 432g
- ◆ Material: 304 Stainless Steel
- ◆ Wall Mounted
- ◆ Warranty: 5 Years



BA-SS-RSL-308842MB (300mm)  
Wall Mounted Metal Shelf | Matte Black

- ◆ 300×88×42mm
- ◆ Weight: 649g
- ◆ Material: 304 Stainless Steel
- ◆ Wall Mounted
- ◆ Warranty: 5 Years

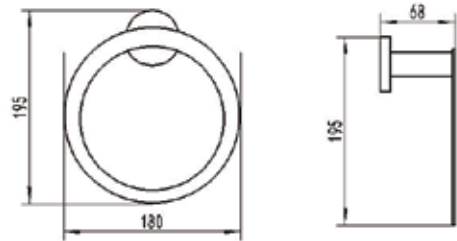




BA-BRS-TRR-181968MB

Towel Ring | Matte Black

- ◆ 180×68×195mm
- ◆ Weight: 358g
- ◆ Material: Brass
- ◆ Wall Mounted
- ◆ Warranty: 5 Years



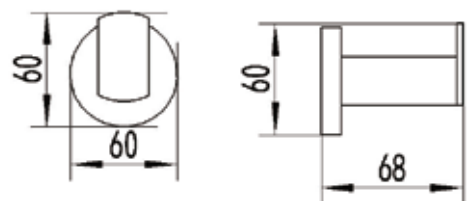
88



BA-SS-RHR-686060MB

Robe Hook | Matte Black

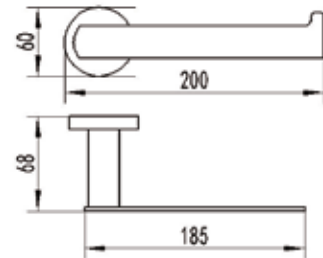
- ◆ 60×68×60mm
- ◆ Weight: 189g
- ◆ Material: 304 Stainless Steel
- ◆ Wall Mounted
- ◆ Warranty: 5 Years





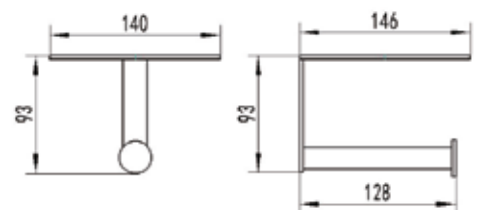
**BA-SS-TRHR-206860MB**  
Toilet Roll Holder | Matte Black

- ◆ 200×68×60mm
- ◆ Weight: 274g
- ◆ Material: 304 Stainless Steel
- ◆ Wall Mounted
- ◆ Warranty: 5 Years



**BA-SS-TRHS-141493MB**  
Toilet Paper Roll Holder with Shelf | Matte Black

- ◆ 140×146×93mm
- ◆ Weight: 392g
- ◆ Material: 304 Stainless Steel
- ◆ Wall Mounted
- ◆ Warranty: 5 Years





# KITCHEN





# KITCHEN TAPWARE



Bold, assured and stylish. FANTACI's kitchen tapware collection takes inspiration from the modern minimalist trend, delivered with detailed and quality design and engineering. At home in any designer kitchen or laundry, the FANTACI kitchen tap collection is built tough enough for everyday rigors.

92

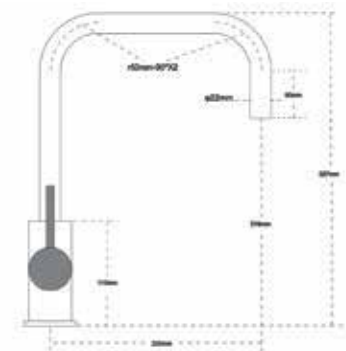


KM-DB-CU442707GM  
Sink Mixer | Gunmetal Grey



KM-DB-CU442707MB  
Sink Mixer | Matte Black

- ◆ WELS 4 Star, 7.5 L/m
- ◆ DZR Brass
- ◆ Volume:0.007m<sup>3</sup>
- ◆ Lever Handle
- ◆ RPR: 50-1200kPA
- ◆ MCWT: 0-90 deg C
- ◆ Cartridge Type: Ceramic
- ◆ Cartridge Size: 35 mm
- ◆ Warranty: 7 Years
- ◆ Inclusions: Hot & Cold Hoses, Aerator, Screw Fitting









KM-DB-AN452507C

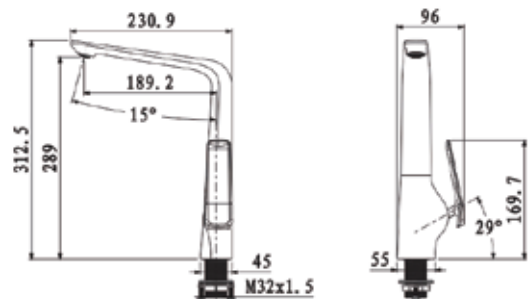
Mixer taps Swivel Delightful | Chrome



KM-DB-AN452507MB

Mixer taps Swivel Delightful | Matte Black

- ◆ WELS 4 Star, 7.5 L/m
- ◆ DZR Brass
- ◆ Volume: 0.008m<sup>3</sup>
- ◆ Lever Handle
- ◆ RPR: 50-1200kPA
- ◆ MCWT: 0-90 deg C
- ◆ Cartridge Type: Ceramic
- ◆ Cartridge Size: 25 mm
- ◆ Warranty: 7 Years
- ◆ Inclusions: Hot & Cold Hoses, Aerator, Screw Fitting





KM-DB-SET452507-GB

Kitchen Mixer With Rinse Spray | Brushed Gold

95

- ◆ 7.5 L/m
- ◆ Stainless Steel 304
- ◆ Bench Mounted
- ◆ RPR: 50-1200kPA
- ◆ MCWT: 0-90 deg C
- ◆ Cartridge Type: Ceramic
- ◆ Cartridge Size: 25 mm
- ◆ Warranty: 7 Years
- ◆ Inclusions: Hot & Cold Hoses, Aerator, Screw Fitting



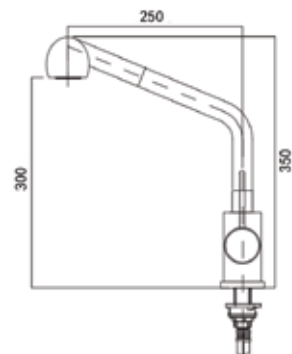


KM2530

Single handle pull out kitchen spray faucet mixer tap | Chrome

96

- ◆ 7.5 L/m
- ◆ Stainless Steel 304
- ◆ Bench Mounted
- ◆ RPR: 50-1200kPA
- ◆ MCWT: 0-90 deg C
- ◆ Cartridge Type: Ceramic
- ◆ Cartridge Size: 25 mm
- ◆ Warranty: 7 Years
- ◆ Inclusions: Hot & Cold Hoses, Aerator, Screw Fitting





KM2324BG  
Brush Gold

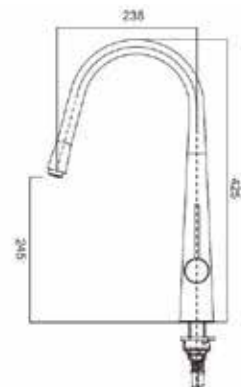
Kitchen mixer with pull out sprayer taps



KM2324GM  
Gun Metal

Kitchen mixer with pull out sprayer taps

- ◆ 7.5 L/m
- ◆ Stainless Steel 304
- ◆ Bench Mounted
- ◆ RPR: 50-1200kPA
- ◆ MCWT: 0-90 deg C
- ◆ Cartridge Type: Ceramic
- ◆ Cartridge Size: 25 mm
- ◆ Warranty: 7 Years
- ◆ Inclusions: Hot & Cold Hoses, Aerator, Screw Fitting





KM2117STB

Single marble handle kitchen faucets | Matt Black

98

- ◆ 7.5 L/m
- ◆ Stainless Steel 304
- ◆ Bench Mounted
- ◆ RPR: 50-1200kPA
- ◆ MCWT: 0-90 deg C
- ◆ Cartridge Type: Ceramic
- ◆ Cartridge Size: 25 mm
- ◆ Warranty: 7 Years
- ◆ Inclusions: Hot & Cold Hoses, Aerator, Screw Fitting



# KITCHEN SINKS

Combining a sleek modern aesthetic with versatile functionality, FANTACI's premium sink range will enhance your day-to-day kitchen experience. All of our handmade sinks are crafted from heavy-duty food grade 304 stainless steel, and conceived and built to exacting standards so that you get the very best of quality materials and craftsmanship.



KS-SS-TW895535GB

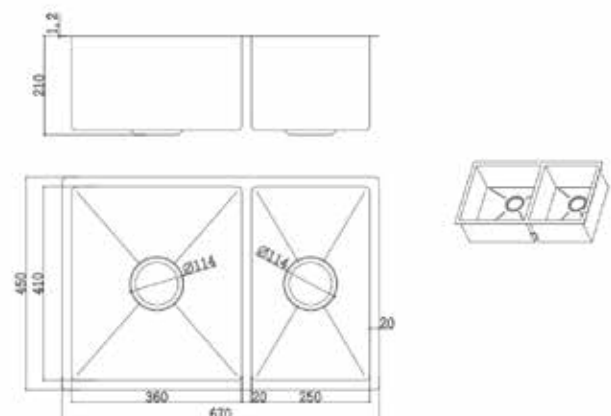
Double Bowl Sink with Waste Strainer | Brushed Gold



KS-SS-TW895535GM

Double Bowl Sink with Waste Strainer | Gunmetal Grey

- ◆ 670x 450x 210mm
- ◆ Stainless Steel 304
- ◆ Weight: 8.52kg
- ◆ Bowl Capacity: 60 Litres
- ◆ Undermount/Topmount



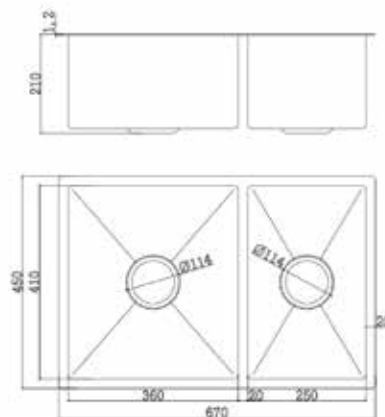


100

KS-SS-TW895535B

Double Bowl Sink with Waste Strainer | Chrome

- ◆ 670×450×210mm
- ◆ Stainless Steel 304
- ◆ Weight: 8.52kg
- ◆ Bowl Capacity: 60 Litres
- ◆ Undermount/Topmount

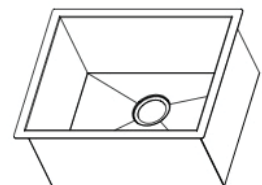
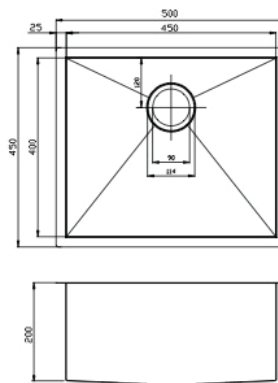




KS-SS-SI675231B

Single Bowl Sink with Waste Strainer | Chrome

- ◆ 500 × 500 × 200mm
- ◆ Cut Out: 500 × 450 × 200mm
- ◆ Stainless Steel 304
- ◆ Weight: 6kg
- ◆ Bowl Capacity: 45 Litres
- ◆ Undermount/Topmount





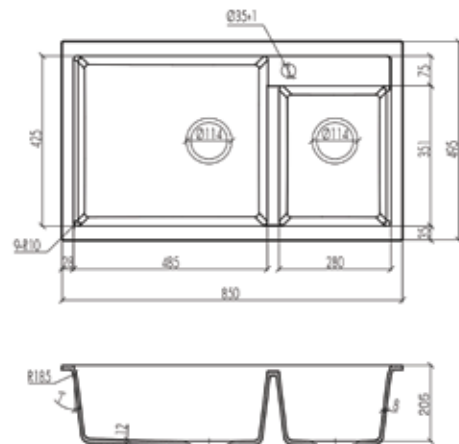


102

SK854920

Granite Stone Kitchen Sink Double Bowls | Metallic Black

- ◆ 850x495x 205mm
- ◆ Granite stone
- ◆ Outlet : 114mm & 140mm
- ◆ Bowl Capacity: 60 Litres
- ◆ Undermount/Topmount

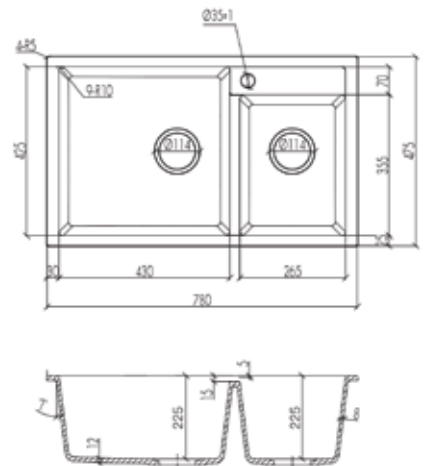




SK784722W

Granite Stone Kitchen Sink Double Bowls | Metallic White

- ◆ 780x465x 225mm
- ◆ Granite stone
- ◆ Outlet : 114mm & 114mm
- ◆ Bowl Capacity: 60 Litres
- ◆ Undermount/Topmount

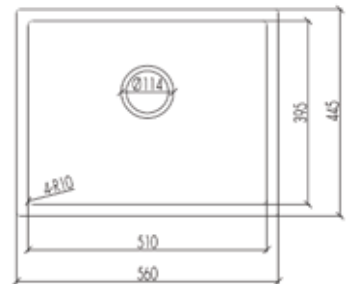




SK564422

Granite Stone Kitchen Sink Single Bowl | Metallic Black

- ◆ 560x445x 245mm
- ◆ Granite stone
- ◆ Outlet : 114mm
- ◆ Bowl Capacity: 40 Litres
- ◆ Undermount/Topmount



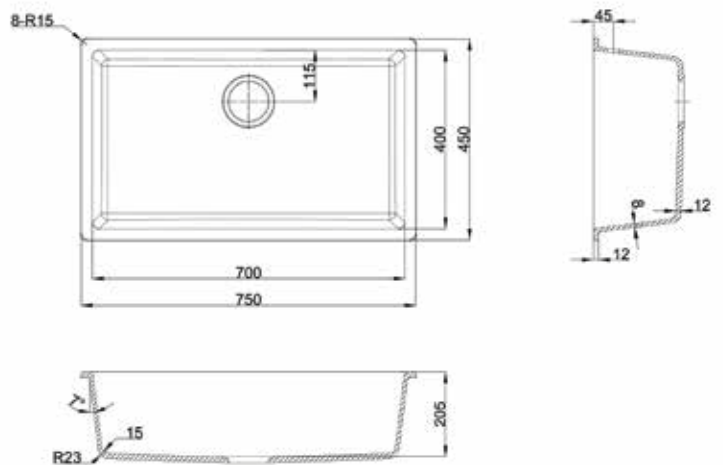




SK754520

Granite Stone Kitchen Sink Single Bowl | Metallic Black

- ◆ 750x450x 205mm
- ◆ Granite stone
- ◆ Outlet : 114mm
- ◆ Bowl Capacity: 57.5 Litres
- ◆ Undermount/Topmount





OUTDOOR



# WOOD-PLASTIC COMPOSITES



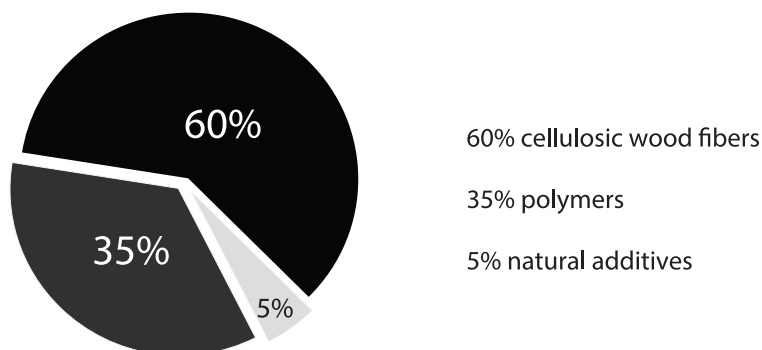
FANTACI's collection of wood-plastic composites (WPC) are an increasingly popular choice for modern outdoor decking, wall cladding, screening and landscaping. WPC is a hybrid material that combines natural wood parts and plastic fibre. It echoes natural wood's durable characteristics, complemented with plastic's design flexibility. WPC is a weather-stable, low-maintenance material that requires no staining or treatment. Most WPC materials are sourced through recycling or upcycling, making it a smart choice for outdoor spaces for those passionate about sustainability.

## Advantages

The benefits of choosing WPC for outdoor areas include:

- Excellent short- and long-term value for your money
- Combines the best of wood and plastic
- The natural look and feel of warm timber
- Low maintenance, with easy installation and no initial or ongoing staining required
- Incredibly durable, with no risk of swelling, splintering or splitting
- Termite-, water-, fire- and UV-resistant
- Anti-bacterial and anti-fungal properties
- Environmentally friendly and toxin-free
- Anti-slip to ensure user safety
- Only needs periodic cleaning
- Extraordinarily versatile and can be moulded to fit almost any space
- Available in a variety of colours and textures to suit all outdoor areas

## Nature + Technology

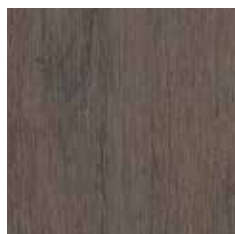






# RANGE

## Decking 5400\*150\*20mm



Latte  
DE-WP-ST541519LA

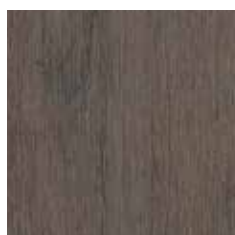


Cappuccino  
DE-WP-ST541519CA



Long Black  
DE-WP-ST541519LB

## Fencing 1730\*162\*21mm



Latte  
FE-WP-ST1771521LA

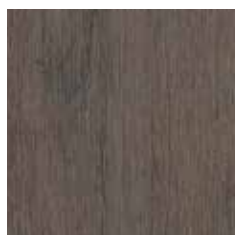


Cappuccino  
FE-WP-ST1771521CA



Long Black  
FE-WP-ST1771521LB

## Fencing Post 2000\*100\*100mm



Latte  
FE-WP-PO101020LA



Cappuccino  
FE-WP-PO101020CA



Long Black  
FE-WP-PO101020LB





112



# Physical-Mechanical Parameters

## Wood Plastic Composite

Test Property	Test Method	Test Conditions	Result
Specific Gravity	ASTM D7031-11 ap. 5,14 ASTM D792-08 Method B	absolute alcohol 23 °C	1.39 gr/ cm <sup>3</sup>
Flexural Strength (MOR)	ASTM D7031-11 sections 5.5 y 5.20 ASTM D6109-10 Method A	speed: 10.9 mm/min span: 368 mm	28.5 M Pa
After freeze-thaw			28.4 M Pa
Retent. rate flexural strength		Freeze-thaw conditions	99.6 %
Flexural Modulus (MOE)		3 cycles:	3650 M Pa
After freeze-thaw		1. Underwater r, 24 h	3480 M Pa
Retent. rate flexural modulus		2.-29 °C, 24 h 3.23 °C, 24 h	95.3 %
Impact Resistance	ASTM D7031-11 sect. 5.12 ASTM D4495-00 (2005)	Mass of the falling weight: 4.5 kg	Mean Failure Height > 2 m Mean Failure Energy > 89 J
Water absorption	ASTM D1037-06a section 23 Method B	20 °C, 24 h, horizontal submersion	0.26%
Moisture content	ASTM D4442-07 Method A	drying: 103 °C, 51 h	0.23%
Taber abrasion	Ref. ASTM D4060-10	wheel:CS-17-5.000 cycles 500 g/wheel,total 1.000 g	Weight Loss: 208 mg Wear Index: 42
Rupture Modulus	Quality and Testing Specif. WPC terrace decking, version 2010-01-29 sect. 3.1	speed: 15 mm/min span: 460 mm	3621 N
Deflection at a load 500 N			1.79 mm
Sweeling in storage boiling water	Quality and Testing Specif. WPC terrace decking, version 2010-01-29 section 3.2	1. 100 °C, 5h 2. 18-22 °C, 15 min	Length: -0.15% Width: 0.05% Thickness: 2.2% Water Uptake: 0.62 %
Linear thermal expansion coefficient	ASTM D6341-10	1. -34.4°C, 48 h 2. 23 °C, 50% HR, 48 h 3. 60°C, 48 h	0.056 mm/mm°C
Creep Recovery	ASTM D7032-08 sec. 5.4	1. applied load 2. load, 24 h 3. removed load 4. after 24 h	Total Deflection: 0.94 mm Recov. Deflection: 0.79 mm Percent Recovery: 84 %
Oxidation Induction Time (OIT)	ASTM D3895-07	T <sup>a</sup> : 200 °C Oxygen: 50 ml/min	42.6 min

# Fire Spread Test

Wood Plastic Composite

Test Property	Test Method	Test Conditions	Result
Reaction to Fire	ASTM E84-09	tunnel length: 25 ft	(1) Flame Spread: 90 (2) Smoke Developed:185

The test results are expressed in indexes which related to with the red oak flooring.

(1) Flame Spread along the time.

(2) Decrease of the light beam emitted by a photocell function of time.

Conclusion:

According to the results, the values are within normal range. The material is considered as normally-flammable and self-extinguishing according with Bunsen test.

Classification ASTM:

Flame Spread: 76 -200

Smoke Developed : 0-450

# Slip Resistance Test

Wood Plastic Composite

Test Property	Test Method	Test Conditions	Result
Slip Resistance	EN 14041-2004/AC:2006	speed test: 0.26 m/s	Dynamic Coefficient of Friction: 0.34 Technical Class DS

115

## Conclusion:

The dynamic friction coefficient obtained is within the range set by EN13893:2002 and it is classified as Technical Class DS.

## Classification EN13893:2002 :

Tests conducted in dry conditions and uncontaminated area estimated that flooring must submit:

Dynamic Coefficient of Friction  $\geq 0.30$  (Class DS)

# Substances Content

madera sintética

Substances	Directive	MDL <sup>(4)</sup>	Result
(1) Pb/Hg/Cd/Cr VI/PBs/ PBDEs	2002/95/CE	1000 mg/Kg	N/D
(2) Organics and Inorganics	1907/2006/CE	0.005 - 0.1 %	N/D <sup>(3)</sup>

116

(1) Restriction of Hazardous Substances Directive ( RoHS) 2002/95/CE

(2) Candidate List of Substances of Very High Concern for authorization published by European Chemicals Agency (ECHA) Regarding Regulation 1907/2006/CE concerning REACH.

(3) N/D : No detected (< MDL)

(4) MDL: Method Detection Limit

Conclusion:

Limit substances non-existent or below the limit established according to specific rules for each type of substance.

The test is considered PASS.

# Decking Conservation

## 1.Cleaning

### Recommendations

- » A suitable drying stage is fundamental for success in cleaning.

Rinse the surface thoroughly with clean water dispensed through a traditional hose.

To prevent water fences, which can be generated on the surface of the decking, it is necessary to insist on drying with a mop. Thus water stagnation is avoided.

117

### Suggestions

- » If soap cleaning products be used, it is imprecindible rinse thoroughly .





# Decking Conservation

## 2.Rinse/Drying

### Recommendations

A periodic maintenance contributes to better conservation of the decking and its conservation.

For your safety, wear gloves throughout the cleaning process. When using specific cleaning agents, follow the manufacturer's instructions.

118

Before you start, sweeping the surface thoroughly in order to remove dirt and dust deposited.

Later, proceed to clean with a non-soap cleanser for conventional soil, dissolved in warm water (at a temperature not too high). Apply using a natural bristle brush.

If this method is not enough, or the decking presents too many stains, a high pressure cleaning device - similar to KÄRCHER - can be used.

To remove stubborn stains, light scraping with a soft wire brush, always in the direction of the grain, should be enough.

### Suggestions

There is on the market a variety of exclusive synthetic decking cleaners.

Avoid contact with strong acids or industrial solvents.

If you are unsure about the product to use for cleaning, it is advisable to test in a hidden area.

