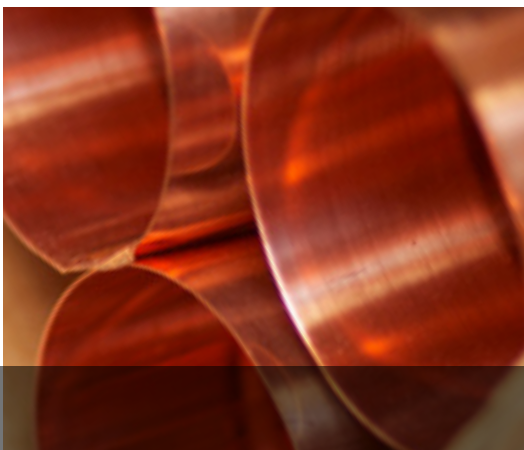




# Installation and assembly guide

IN PARTNERSHIP WITH





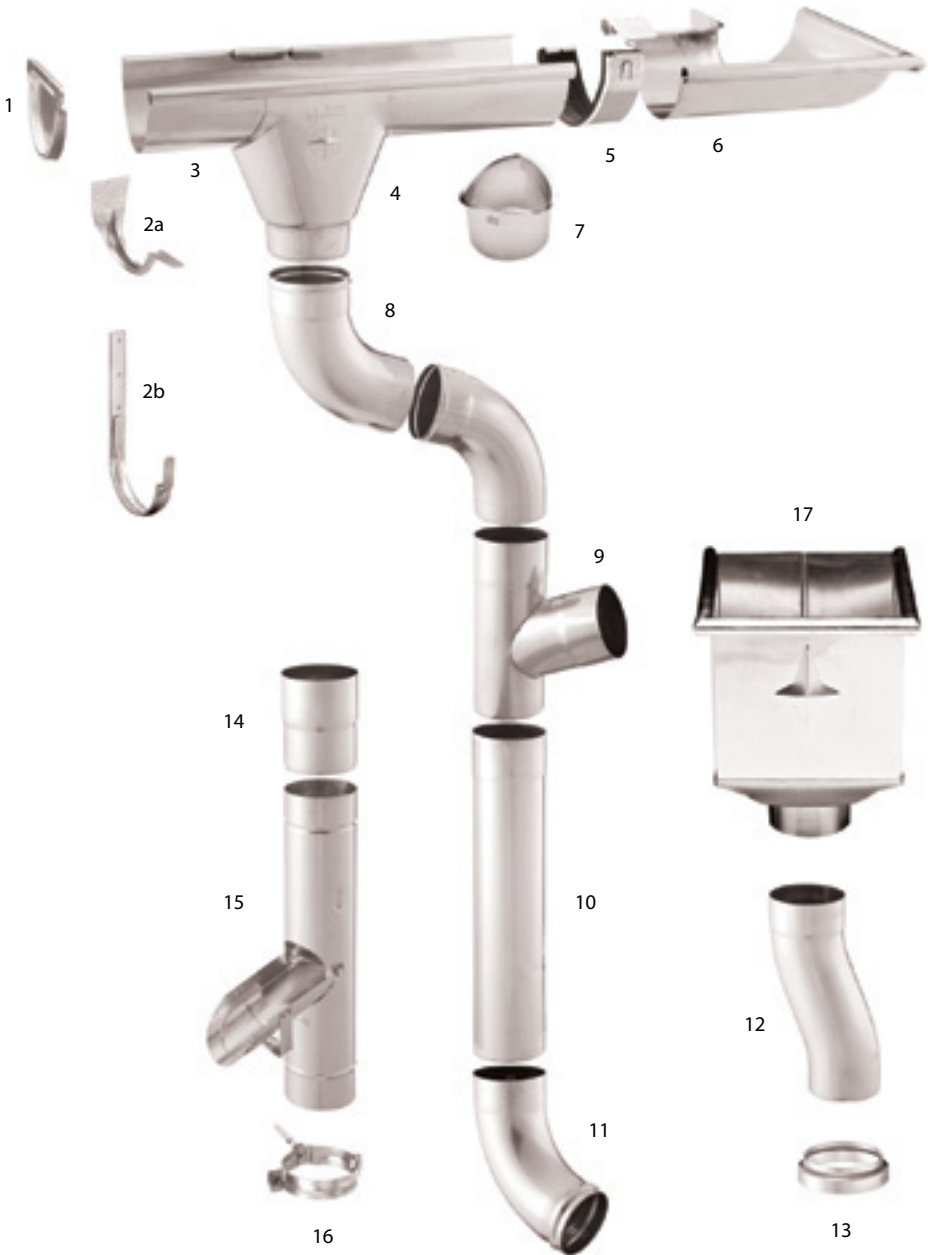
## The **ultimate** roof drainage system...

### Easy installation

The complete Rain elements roof drainage system is designed with plug in and clamping connections. There is no riveting or soldering necessary on the majority of our products.

TOOLS REQUIRED: hack saw/chop saw, pencil, rubber mallet, tin snips, multi-grip pliers, ruler.





**Product range:**

- 1. End Cap with rubber seal
- 2a. Fascia Hanger
- 2b. Gutter Hook
- 3. Gutter
- 4. Outlet
- 5. Gutter Connector

- 6. Corners (inside or outside)
- 7. Mini outlet for soldering (Copper & Zinc only)
- 8. Elbow 72°
- 9. Downpipe Junction
- 10. Downpipe
- 11. Elbow 40°

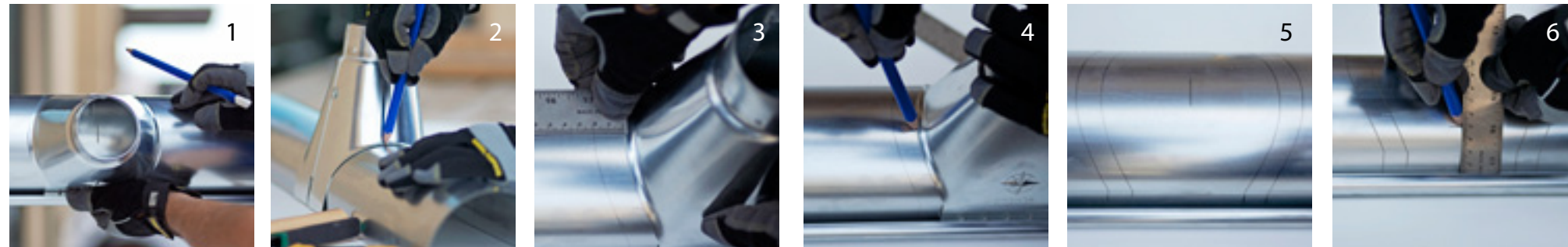
- 12. S-Curve
- 13. Pipe Cover
- 14. Downpipe Connector
- 15. Leaf Clean Out Pipe
- 16. Bracket for Downpipe with thread socket
- 17. Collector Box



# Quick and easy assembly

## Installing outlets

**TIP:** When cutting the circular hole for the outlet, start in the center and cut toward the outside edge in a series of spirals. When reaching the full diameter, ensure the final cut edge is clean and free from burrs.



Mark center spot on gutter where outlet is desired (1); With outlet on gutter, mark outside edges (2); Move outlet 20 mm to the inside of both left and right sides and mark (4, 5); Remove outlet from gutter and place a mark 5 cm up from each side of gutter (6).



Draw a circle that intercepts the interior side marks and the 5 cm marks (7); Cut out circle – see tip above (8); Place outlet back on gutter. Bend the back tabs over the back of the gutter (9); Use pliers to fully wrap tabs around back gutter edge (10); Use a rubber mallet to softly hammer the inside lip of the hole until it bends smoothly into the outlet opening (11, 12).

## Mounting endcaps

**TIP:** For best results, install endcaps before gutters are hung.



Place rubber seal inside endcap (1); Be sure rubber seal is placed in endcap with three lips towards the gutter (2); Use rubber mallet to tap endcap onto gutters (3).



Be sure endcap is tight with gutter for proper seal (4); Use rubber mallet to gently bend endcap tab onto gutter (5, 6).

## Connecting gutters



Insert gutter connectors into gutter sleeve (1); Connect gutters leaving 2 mm space for expansion of metal (2); Insert rubber gasket into gutter connector (3).



Center gutter connector over seam (4); Push down on both gutter lengths to make proper seal (5); Pull back tab, close clamp and close tab (6).

## Mounting gutters

1. Snap or draw a line on gutter installation surface (fascia or other) and include a slope of 5mm per meter (1/16" per foot).
2. Affix brackets to fascia on line every 2 feet, starting at 1 foot from gutter start point (to allow for end bracket / outlet, gutter connector).
3. Add end caps, outlets, corners to gutter lengths before installing. Be sure to mark and measure the lengths needed and outlet positions.
4. Place gutter lengths in brackets and secure.
5. Add gutter connectors.



## Mounting downpipes

1. Measure and prepare downpipe, elbows and downpipe connectors to connect to gutter outlet.
2. Consider other components in your preparations if using Y junction, collector box, s-curves, or leaf clean out pipes.
3. Mark location for and drill pilot hole for downpipe screws. Generally, plan to use 2 downpipe brackets per downpipe length.
4. Affix screws; affix bracket to screws.
5. Affix downpipe, elbows and downpipe connectors into brackets.

## Still have questions?

Installation videos are available on our website.

Visit [www.rainelements.ca/install](http://www.rainelements.ca/install)





A new standard in **rain management**



IN PARTNERSHIP WITH  
**zambelli**

866.724.6607  
[info@rainelements.ca](mailto:info@rainelements.ca)  
[rainelements.ca](http://rainelements.ca)