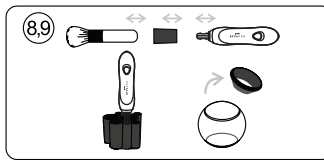
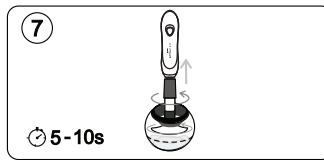
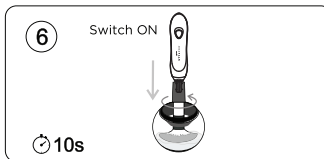
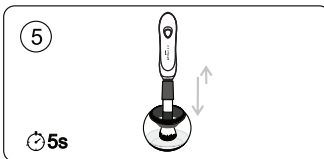
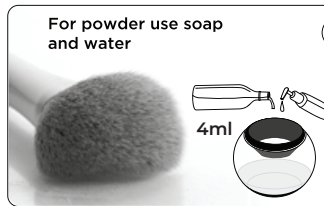
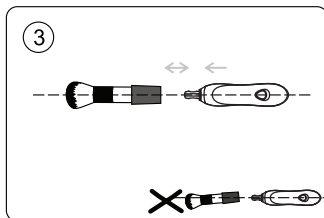
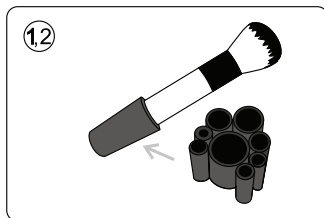
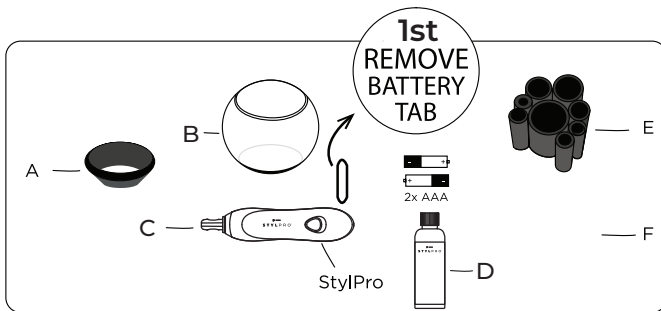


STYLPRO™

Invented With Love

Stypro™ Gift Set



(EN) BEFORE FIRST USE:

1. Check batteries are inserted correctly and REMOVE SMALL PLASTIC BATTERY TAB.
2. Ensure 8 silicone (E) COLLARS
3. Attach the (A) NECK onto the (B) BOWL.

HOW TO USE:

Please read all instructions before use and retain for future use.

THIS DEVICE IS DESIGNED EXCLUSIVELY FOR DOMESTIC USE. ONLY USE THIS APPLIANCE FOR ITS INTENDED USE AS DESCRIBED IN THIS MANUAL.

1. Select brush, note what type of makeup is on the brush - is it water soluble or non-soluble?
2. Now select the best fitting (E) COLLAR and push the brush in, until it is held firm and straight.
3. Push the (C) SPINDLE into the square hole at the bottom of the (E) COLLAR. Check the STYLPRO is securely attached to the (E) COLLAR and brush in a straight line. Adjust the brush if necessary. Any slight leaning will affect the ability of the STYLPRO to clean and dry, and may cause it to rattle.
4. Fill the (B) BOWL:
 - A. For water-soluble makeup (for example: blusher, bronzer and loose powder), squeeze a small amount (4ml/0.14floz) of your preferred anti-bacterial liquid soap into the (B) BOWL. Please consult your brush manufacturer for advice on the best cleaner to use. Add water to the bowl until the water level is half the height of the brush bristles you wish to clean. If you are unsure whether the makeup is water soluble, try this step first and if the brush is not totally clean, follow the non-water soluble makeup instructions.
 - B. For non-water soluble makeup (for example foundation), add 10-20ml (0.34-0.68floz) of (D) StylPro Makeup Brush Cleanser, depending on brush size (sold separately at www.stylpro.com), into the bowl. Ensure the solution level is less than half the height of the brush bristles you wish to clean.
5. Softly dunk the brush up and down in the liquid, pressing the brush lightly into the (B) BOWL to open the bristles slightly. Work liquid into the bristles. Repeat for 5 seconds. To avoid damaging the brush do not allow the metal ferrule go under the water/cleanser level.
6. After 5 seconds: whilst gently pressing the brush down in the (B) BOWL, switch on the STYLPRO. Gently lift the StylPro - the brush will start to spin rapidly, causing the liquid to splash up. Slowly move the brush up and down for 10 seconds, keeping the brush underneath the liquid level at all times. At this stage, if the brush is not aligned straight, it might start to wobble from side to side and rattle against the (B) BOWL. If this happens, loosen your grip and place a finger gently on the top of the STYLPRO. If this it does not resolve the problem, switch off the StylPro and consult the Questions and Answers section at www.stylpro.com.
7. After 5-10 seconds - Gradually lift the spinning brush out of the liquid (but keep inside the (B) BOWL and leave it to spin above the liquid level. As the brush lifts from the dirty liquid, the bristles will spray out and you will see the water/cleanser and dirt being spun out of the brush. Leave the brush spinning above the liquid. After 10 seconds switch off the STYLPRO. Repeat this step if you would like it drier. Reshape the bristles with your fingers if necessary. **WARNING:** Do not over-spin as this may damage the brush. We advise you NOT to spin dry continuously for more than 10 seconds at a time, then check the brush and if still wet, repeat.
8. Detach the (E) COLLAR from the (C) SPINDLE remove brush from (E) COLLAR.

9. Remove the (A) NECK from the (B) BOWL, then wash the (B) BOWL and (A) NECK by hand with soap and warm water. **DO NOT WASH IN DISHWASHER.**

This device is NOT a toy. Keep out of reach of young children younger than 10 years. Children should be supervised to ensure that they do not play with device. Cleaning and user maintenance shall not be made by children without supervision.

This device can be used by children ages 10 years and above with adult supervision, and by persons with reduced physical, sensory or mental capabilities or, lack of experience and knowledge if they have been given supervision or instruction concerning use of the appliance in a safe way and if, they understand the hazards involved.

Only use the appliance with the supplied attachments. If damaged, only replace it with one of the original types to avoid an electrical hazard. **Only** use cleaning solutions as detailed under 'Directions for use'. **ALWAYS** keep the device away from hot or heated surfaces and avoid direct sunlight. **NEVER** use attachments other than those we supply. **NEVER** use the appliance if it is damaged or broken to avoid injuries. **NEVER** attempt to disassemble or modify the device as this could place the user at risk and invalidates the guarantee.

WARNING: Do not use this appliance use this product near bathrooms, showers, basins or other vessels containing water and do not immerse in water or any other liquids. This device is **NOT** waterproof. Keep these instructions safe for future reference.

BATTERIES: This makeup brush cleaner operates with 2 x AAA 1.5 V batteries. For best performance, use an alkaline battery. Always use the battery by the recommended use-by-date. Install 2 x AAA batteries in correct direction, ensuring that the battery is fitted the right way around observing the + and - signs on the battery and product. Always seek medical advice if you believe a battery has been swallowed. Always store batteries in a well ventilated cool dry place away from direct sunlight. Always keep batteries out of the reach of young children. Used batteries should not be disposed of with the household waste. Please recycle batteries at special collection points or return them to your retailer. Never place the battery in a fire or mutilate the battery as it may burst or release toxic materials. Never puncture, crush, dent or dismantle batteries or attempt to revive batteries by heating, charging or other means. If the appliance is not used for long periods of time, do not leave the battery inserted (danger of leakage). Remove the battery when not in use for extended periods of time. In the instance of battery leakage occurring and coming into contact with the skin or eyes, wash immediately with lots of water. Do not allow conductive materials such as rings, bracelets or keys to touch the batteries, otherwise a short circuit may cause the batteries and/or conductive material to overheat and cause burns.

RECYCLING CENTRE. THIS SYMBOL ON THE PRODUCT AND ACCOMPANYING DOCUMENTS MEANS THAT USED ELECTRICAL AND ELECTRONIC EQUIPMENT (WEEE) SHOULD NOT BE MIXED WITH GENERAL HOUSEHOLD WASTE. FOR PROPER TREATMENT, RECOVERY AND RECYCLING, PLEASE TAKE THIS PRODUCT TO DESIGNATED COLLECTION POINTS WHERE IT WILL BE ACCEPTED FREE OF CHARGE. ALTERNATIVELY, IN SOME COUNTRIES, YOU MAY BE ABLE TO RETURN YOUR PRODUCTS TO YOUR LOCAL RETAILER UPON PURCHASE OF AN EQUIVALENT NEW PRODUCT. DISPOSING OF THIS PRODUCT CORRECTLY WILL HELP SAVE VALUABLE RESOURCES AND PREVENT ANY POTENTIAL NEGATIVE EFFECTS ON HUMAN HEALTH AND THE ENVIRONMENT WHICH MIGHT OTHERWISE ARISE FROM INAPPROPRIATE WASTE HANDLING. PLEASE CONTACT YOUR LOCAL AUTHORITY FOR FURTHER DETAILS OF YOUR NEAREST DESIGNATED COLLECTION POINT. PENALTIES MAY BE APPLICABLE FOR INCORRECT DISPOSAL OF THIS WASTE, IN ACCORDANCE WITH YOUR NATIONAL LEGISLATION. FOR BUSINESS USERS IN THE EUROPEAN UNION: IF YOU WISH TO DISCARD ELECTRICAL AND ELECTRONIC EQUIPMENT, PLEASE CONTACT YOUR DEALER OR SUPPLIER FOR FURTHER INFORMATION.

IMPORTANT INFORMATION FOR CORRECT DISPOSAL OF THE PRODUCT IN ACCORDANCE WITH EC DIRECTIVE 2002/96/EC: At the end of its working life, the product must not be disposed of as urban waste. It must be taken to a special local authority differentiated waste collection centre or to a dealer

providing this service. Disposing of a household appliance separately avoids possible negative consequences for the environment and health, deriving from inappropriate disposal and enables the constituent materials to be recovered to obtain significant savings in energy and resources. As a reminder of the need to dispose of household appliance separately, the product is marked with crossed-out wheeled dustbin.

CORRECT DISPOSAL OF THIS PRODUCT IN ACCORDANCE WITH EPA IN USA: Electronic waste (called e-waste) is a term used to describe electronics that are nearing the end of their useful life and are discarded, donated, or recycled. Although donating and recycling electronic devices conserves natural resources, you may still choose to dispose of e-waste by contacting your local landfill and requesting a designated e-waste drop off location. Be aware that although there are many options for disposal, it is your responsibility to ensure that the location chosen is reputable and certified. Visit the Environmental Protection Agency's (EPA) Electronics Donation and Recycling webpage for additional information on donating and recycling electronics. For information on recycling regulations and facilities in your state, visit the EPA Regulations, Initiatives, and Research on Electronics Stewardship webpage. **DO NOT DISPOSE IN REGULAR HOUSEHOLD WASTE.**

UKCA & CE MARKING: UK/EU - DECLARATION OF CONFORMITY: STYLIDEAS LTD DECLARES THAT STYLPRO COMPLIES WITH THE ESSENTIAL REQUIREMENTS AND OTHER RELEVANT PROVISIONS. A COPY OF THE DECLARATION OF CONFORMITY IS AVAILABLE ON REQUEST. STYLIDEAS LTD, AMSHOLD HOUSE, GOLDINGS HILL, LOUGHTON, ESSEX, IG10 2RW, UK. OBELIS S.A, BD. GENERAL WAHIS 53, B-1030 BRUSSELS, BELGIUM.

WARRANTY: IN THE USA THE STYLPRO LIMITED WARRANTY LASTS 1 YEAR FROM THE DATE OF PURCHASE. PLEASE KEEP THE ORIGINAL RECEIPT FOR WARRANTY SERVICE. FOR SERVICE OR REPAIR DURING THIS WARRANTY PERIOD, EMAIL TEAMTOM@STYLIDEAS.COM OR CALL +44 (0)20 3225 5559 WITH PROOF OF PURCHASE.

IMPORTANT: THIS WARRANTY DOES NOT COVER DAMAGE RESULTING FROM ACCIDENTS, MISUSE, ALTERATIONS, ABUSE, LACK OF REASONABLE CARE OR USE OTHER THAN DESCRIBED IN THESE INSTRUCTIONS, OR PERFORMANCE OF SERVICE OR REPAIRS BY AN UNAUTHORISED SERVICE CENTRE. THIS WARRANTY IS VALID ONLY ON MERCHANDISE SOLD BY AUTHORISED RETAILERS. NOTE, THE ITEM MUST BE THOROUGHLY CLEANED PRIOR TO RETURN.

IN THE EU this product is guaranteed for a period of 2 years from the date of purchase, against mechanical and electrical defects. It is particularly important that you carefully read the instructions provided, in order to get maximum use from this product. This guarantee is only valid if the appliance is used solely for domestic purposes in accordance with the instructions and provided that it is not connected to an unsuitable electricity supply, dismantled or interfered with in any way or damaged through misuse. Under this guarantee we undertake to repair or replace free of charge any parts found to be defective. This guarantee is only valid with your original sales receipt as proof of purchase. You may wish to attach the receipt to this card for ease of reference and to avoid accidental loss.

GARANTEE EXCLUSIONS

1. Batteries and damage from leakage is not covered by the terms of the guarantee.
 2. The warranty does not cover product misuse or from damage caused by incorrect product use.
 3. Consumable items such as brushes are not covered under this warranty.
- This guarantee does not cover any claims for consequential loss or damage. Nothing in this guarantee or the instructions relating to this product excludes, restricts or otherwise affects your statutory rights. In line with our policy of continuous product development we reserve the right to change the product, packaging and documentation specifications without notice.

StylPro Makeup Brush Cleanser Instructions

(EN) INSTRUCTIONS WITH STYLPRO: ADD A SMALL AMOUNT TO THE STYLPRO BOWL AND FOLLOW INSTRUCTIONS. BRUSH WILL BE CLEAN AND DRY IN SECONDS. DO NOT ADD WATER.

(EN) MADE IN CHINA. MAKEUP BRUSH CLEANSER (2,2,4,4,6,6,8,8-HEPTAMETHYLNONANE) CONTAINS 250ML STYLPRO MAKEUP BRUSH CLEANSER.
DANGER: MAY BE FATAL IF SWALLOWED AND ENTERS AIRWAYS. IF MEDICAL ADVICE IS NEEDED, HAVE PRODUCT CONTAINER OR LABEL AT HAND. KEEP OUT OF REACH OF CHILDREN. IF SWALLOWED, IMMEDIATELY CALL A POISON CENTRE/ DOCTOR. DO NOT INDUCE VOMITING. DISPOSE OF CONTENTS/ CONTAINER IN ACCORDANCE WITH LOCAL REGULATIONS. REPEATED EXPOSURE MAY CAUSE SKIN DRYNESS OR CRACKING. CONTAINS: ≥ 30% ALIPHATIC HYDROCARBONS.

STYLIDEAS LTD, AMSHOLD HOUSE, GOLDINGS HILL, LOUGHTON, ESSEX, IG10 2RW UK. OBELIS S.A. BD. GÉNÉRAL WAHIS 53, B-1030 BRUSSELS, BELGIUM		8.454 fl.oz. / 250ml MADE IN CHINA
--	--	---------------------------------------

UFI: C500-C029-G003-DQF1



BC08GS

STYLIDEAS Ltd, Amshold House, IG10 2RW, UK.
 OBELIS S.A, Bd. Général Wahis 53,
 B-1030 Brussels, Belgium

 @stylpro_uk
teamtom@stylideas.com
 +44 (0)20 3225 5559
www.STYLIDEAS.com

EN FR ES DE NL