

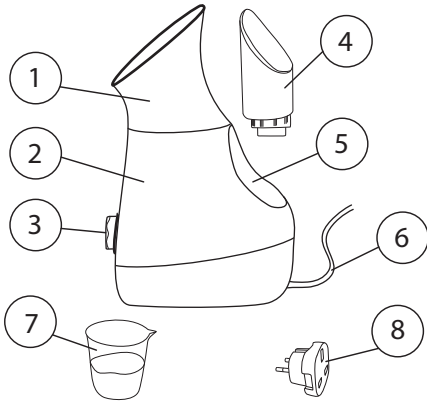


STYLPRO™

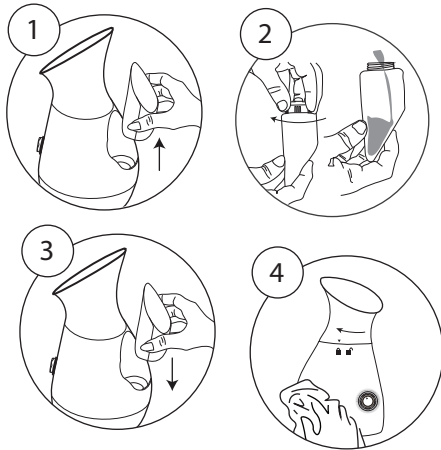
Invented With Love

4-in-1 Ionic Spa Facial Steamer / Sauna Facial Spa Ionic
4-en-1 Vaporizador / Facial Nano Spa 4 en 1 / 4-in-1 Ionic
Spa gezichtsstomer / 4-in-1 Ionic Spa Gesichtsdampfer/
Parownik do twarzy Ionic Spa 4 w 1

Parts Identification / Identification des pièces /
Identificación De Los Componentes / Teile-Identifikation /
Identificatie Van Onderdelen / Identyfikacja części



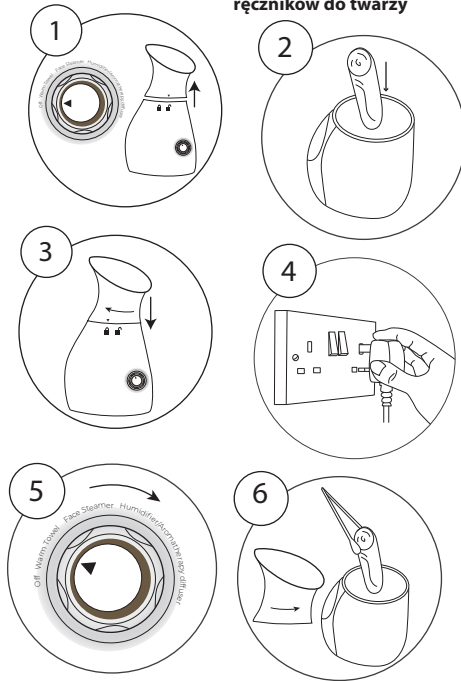
Filling the water Tank / Remplissage du réservoir d'eau /
Llenar el tanque de agua / Befüllen des Wassertanks /
Het waterreservoir vullen/Napełnianie zbiornika wody



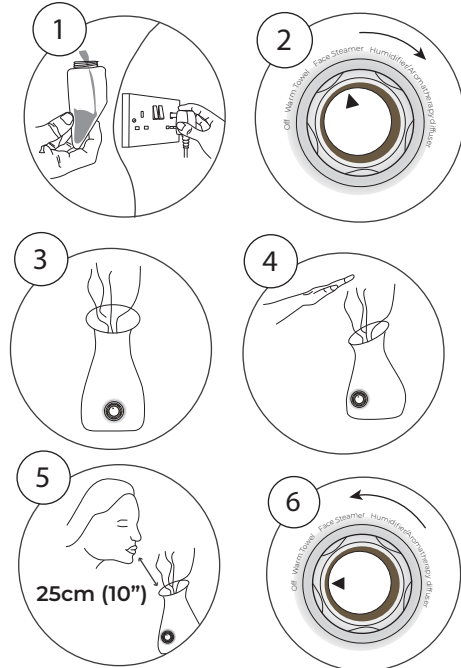
PLEASE USE DISTILLED OR DEIONISED WATER ONLY

Using tap, filtered or mineral water will cause limescale which will permanently damage this machine & cause it to malfunction.

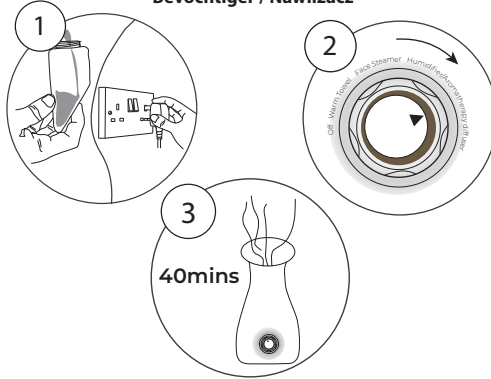
Face Towel Warmer / Chauffe-serviette /
Calentador de toallas / Handtuchwärmer /
Handdoekverwarmer / Podgrzewacz do
ręczników do twarzy



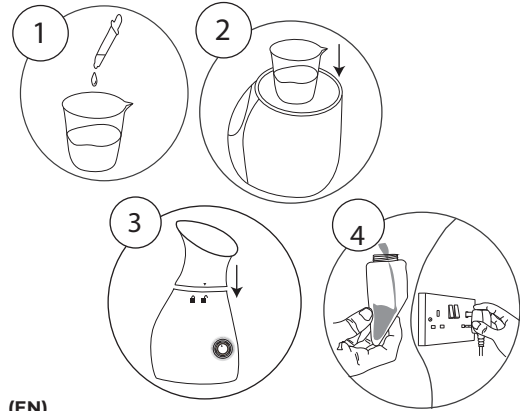
Facial steamer / Sauna facial / Vaporizador facial /
Gesichtsdampfer / Gesichtsstomer / Parownik do twarzy



Humidifier / Humidific / Humidificador / Luftbefeuchter /
Bevochtiger / Nawilżacz



Aromatherapy Diffuser / Diffuseur d'huiles essentielles /
Difusor de aroma / Aromaterapie-Difusor /
Aromaterapieverspreider / Dyfuzor aromaterapeutyczny



(EN)
FOR YOUR SAFETY AND CONTINUED ENJOYMENT OF THIS PRODUCT, ALWAYS READ INSTRUCTION LEAFLET CAREFULLY BEFORE USING.

Parts Identification

1. Steamer Head 2. Steamer Body 3. Rotary Switch
4. Water Tank 5. Water Reservoir 6. Power Lead
7. Beaker 8. EU Adaptor

FILLING AND INSERTING THE WATER TANK

1. Pull up the Water Tank from the Water Reservoir.
2. Turn and open the Water Tank cap. Fill up the Water Tank with ROOM TEMPERATURE DISTILLED OR DEIONISED WATER only and close the Water Tank cap.
3. Put the Water Tank back into the Water Reservoir.
4. Wipe away any water on the surface of the Steamer.
IMPORTANT: DO NOT FILL WATER TANK WITH TAP, FILTERED OR MINERAL WATER AS THEY CAUSE LIMESCALE WHICH WILL PERMANENTLY DAMAGE THE STEAMER, MAY CAUSE IT TO MALFUNCTION AND WILL VOID THE WARRANTY. DO NOT ADD HOT WATER OR OIL TO THE WATER TANK OR DIRECTLY INTO THE STEAMER BODY. ALWAYS TURN OFF THE POWER WHEN ADDING WATER IN THE TANK.

NOTES: The Stylpro Facial Steamer produces ultra-fine ionic mist that is much less dense than traditional steamers and more effective at penetrating deeper into, and hydrating your skin. Your Stylpro Facial Steamer may have a residual smell before or during first use - this is normal and will be eliminated after one use.

TOWEL WARMER - INSTRUCTIONS

1. Ensure the Steamer is switched off and cool, then hold the Steamer Body and rotate the Steamer Head to line up the arrow in the "unlocked" position, remove Steamer Head.
2. Fold a damp, cotton face towel neatly and place it into the Steamer Body.
3. Replace the Steamer Head and lock in position.
4. Fill and insert the Water Tank as directed. Plug the Steamer into the power outlet (use EU adaptor for mainland Europe).
5. Rotate the Switch to the 'Warm Towel' position, leave for 2 minutes until warm.
6. Carefully unlock the Steamer Head, taking care to avoid any hot steam. THE STEAM IS HOT. Lift the face towel out of the Steamer Body using tongs, tweezers or similar as the face towel will be very hot [tongs and tweezers not included].
7. Turn the switch to the off position after use. Allow to cool to room temperature before moving.

FACE STEAMER - INSTRUCTIONS

1. Fill and insert the Water Tank as directed. Plug the steamer into the power outlet (use EU adaptor for mainland Europe).
2. Rotate the Switch to turn on the appliance and set to 'Facial Steamer' position. The light around the switch will turn blue.
3. Steam will start to be released after approximately one minute. THE STEAM IS HOT. When using the appliance for the first time, check the steam temperature at 25cm (10") distance from the steamer head, with your hand before moving your face into position for steaming.
4. To ensure that the steam covers your entire face, direct the steam to the top of your chin at 25cm (10").
IMPORTANT: DO NOT MOVE YOUR FACE CLOSER THAN 25cm (10") FROM THE STEAMER HEAD.
5. Turn the switch to the off position after use. Allow to cool to room temperature before moving.

HUMIDIFIER - INSTRUCTIONS

1. Fill and insert the Water Tank as directed. Plug the steamer into the power outlet (use EU adaptor for mainland Europe).
2. Rotate Switch to 'Humidifier/Aromatherapy Diffuser' position.
3. Steam will start to be released after approximately one minute. THE STEAM IS HOT. A full water tank will steam for approximately 40 minutes.
IMPORTANT: DO NOT ADD WATER DIRECTLY INTO THE STEAMER BODY. ALWAYS USE THE WATER TANK.
4. Turn the switch to the off position after use. Allow to cool to room temperature before moving.

AROMATHERAPY DIFFUSER - INSTRUCTIONS

1. Add required number of drops of essential oils to the Beaker.
2. Ensure the Steamer is switched off and cool, then hold the Steamer Body and rotate the Steamer Head to line up the arrow in the "unlocked" position, remove Steamer Head. Then place Beaker inside the Steamer Body.
3. Replace the Steamer Head and lock in position.
4. Fill and insert the Water Tank as directed. Plug the steamer into the power outlet (use EU adaptor for mainland Europe).
5. Rotate Switch to 'Humidifier/Aromatherapy Diffuser' position. The light around the switch will turn blue. Steam will start to be released after approximately one minute. THE STEAM IS HOT. A full water tank will steam for approximately 40 minutes.
6. Turn the switch to the off position after use. Allow to cool to room temperature before moving.
IMPORTANT: DO NOT ADD OILS DIRECTLY INTO THE STEAMER BODY. ALWAYS USE THE BEAKER. DO NOT USE AROMATHERAPY OILS: If you are pregnant (seek advice from your doctor or midwife before using essential oils) if you have allergies. If you have skin injuries, eczema, swelling, etc. If you are a person with skin diseases, atopic dermatitis or sensitive skin.

IMPORTANT: ENSURE YOUR SAFETY. Always unplug while cleaning and maintaining. Failure to do so may result in accident, electric shock or injury. Periodically

clean to ensure dust does not accumulate on the appliance plug as it may cause the insulation to fail. When storing, do not wrap the power cord around the appliance. Doing so may cause deformation of the cord, and appliance failure. THE SAFETY PRECAUTIONS PROVIDED HERE WILL HELP YOU WITH THE CORRECT AND SAFE OPERATION OF THIS APPLIANCE, SO THAT YOU MAY AVOID INJURIES TO YOURSELF AND OTHERS OR DAMAGE TO PROPERTY AND THE DEVICE.

IMPORTANT SAFETY INFORMATION: SUITABLE FOR UK/EUROPEAN POWER SUPPLY 230V/50HZ. FOR MAINLAND EUROPEAN USE A UK TO EU EUROPEAN ADAPTER. THE MAXIMUM WATER VOLUME IS 200ML (0.2L) THE WORKING TIME IS 18-40 MINUTES DEPENDING ON THE CHOSEN SETTING. PLEASE DO NOT PLACE THE STEAMER, POWER LEAD, AND PLUG INTO WATER. BEFORE ADDING THE WATER TANK, PLEASE MAKE SURE YOU TURN OFF THE POWER AND REMOVE THE PLUG. PLEASE DO NOT USE ANY CLEANSER OR CHEMICAL SUBSTANCE IN THE WATER TANK. PLEASE KEEP YOUR FACE 25CM (10") FAR FROM THE STEAM OUTLET OF THE STEAMER TO AVOID THE RISK OF SCALDING. PLEASE DO NOT ADD ESSENTIAL OIL INTO THE WATER TANK OR DIRECTLY INTO THE STEAMER BODY. BECAUSE THE BOILING POINT IS DIFFERENT. IF YOU DO IT, THE STEAMER MAY EXPLODE WHEN HEATED UP. WHEN ADDING OILS ALWAYS USE THE BEAKER. FOR CUSTOMER SERVICE ENQUIRIES, PLEASE CONTACT TEAMTOM@STYLIDEAS.COM.

TO REDUCE THE RISK OF ELECTRIC SHOCK: Do not use the face steamer while bathing. Do not use the product near a sink, or any vessel containing water. Do not place it into water or any other liquid. Do not reach for the unit if it has fallen into water. Do not use the appliance with wet hands. Unplug immediately if it has been dropped into the water or any other liquid. Plug-in correctly to corresponding power source. **IMPORTANT: ALWAYS SWITCH OFF AND UNPLUG THE APPLIANCE IMMEDIATELY AFTER USING IT.**

TO REDUCE THE RISK OF INJURY: Do not leave the appliance unattended when in use. Do not allow children to operate it. Do not use it outdoors. The 4-in-1 device should be used only for its intended purpose as described in this manual. Do not use attachments that are not recommended in the manual. **IMPORTANT: ALWAYS ENSURE THE APPLIANCE IS OPERATED ON AN ELECTRIC POWER SOURCE MATCHED TO THE RATED VOLTAGE INDICATED ON THE APPLIANCE. ENSURE THAT THE POWER SOURCE AND APPLIANCE PLUG BOTH ARE PLUGGED IN CORRECTLY.**

DO NOT OPERATE THE UNIT: If it has a damaged cord or plug. If it is not working properly. If it has been dropped or damaged. If its air vents are not working properly or blocked by lint and hair, etc. If the cord or plug becomes hot. If it is not plugged-in correctly.

DO'S & DON'TS: Do not damage, modify, unreasonably bend, pull, or twist the cord. Do not place anything heavy on the cord and do not pinch the cord. Do not use or store the appliance in the bathroom or in any other area with high humidity. Do not place the appliance where it may get wet. Do not allow infants to reach the appliance. Do not use the appliance near flammable substances (Alcohol based perfumes, nail remover, aerosol sprays, etc.). Do not drop or insert any object into any opening. Always store it in a location that is out of the reach of infants. Use the water tank to supply water to the appliance, and make sure that the appliance and the power switch do not get wet when filling the water tank. Keep away from heated surfaces.

LIMITED TWO-YEAR WARRANTY: OUR GOODS COME WITH GUARANTEES THAT CANNOT BE EXCLUDED UNDER THE EUROPEAN CONSUMER LAW. EU DIRECTIVE 1999/44/EC, THIS DIRECTIVE STATES 'A TWO-YEAR GUARANTEE APPLIES FOR THE SALE OF ALL CONSUMER GOODS EVERYWHERE IN THE EU. YOU ARE ENTITLED TO A REPLACEMENT OR REFUND FOR A MAJOR FAILURE YOU ARE ALSO ENTITLED TO HAVE THE

GOODS REPAIRED OR REPLACED IF THE GOODS FAIL TO BE OF ACCEPTABLE QUALITY AND THE FAILURE DOES NOT AMOUNT TO A MAJOR FAILURE. STYLPRO™ WILL REPAIR OR REPLACE (AT OUR OPTION) YOUR APPLIANCE FREE OF CHARGE FOR TWENTY-FOUR MONTHS FROM THE DATE OF PURCHASE, IF THE APPLIANCE IS DEFECTIVE IN WORKMANSHIP OR MATERIALS.

CORRECT DISPOSAL OF THIS PRODUCT: WHEN THE PRODUCT HAS REACHED THE END OF ITS USAGE, PLEASE DO NOT DISPOSE WITH REGULAR HOUSEHOLD WASTE. RECYCLING IS THE SAFEST AND MOST RESPONSIBLE WAY TO DISPOSE OF ELECTRICAL ITEMS THAT COME TO THE END OF THEIR LIFECYCLE. PLEASE DISPOSE OF IT ACCORDING TO YOUR LOCAL REGULATIONS. THE WASTE ELECTRICAL AND ELECTRONIC EQUIPMENT (WEEE) DIRECTIVE IN EUROPEAN COUNTRY.

UKCA & CE MARKING: UK/EU – DECLARATION OF CONFORMITY: STYLIDEAS LTD DECLARES THAT STYLPRO COMPLIES WITH THE ESSENTIAL REQUIREMENTS AND OTHER RELEVANT PROVISIONS. A COPY OF THE DECLARATION OF CONFORMITY IS AVAILABLE ON REQUEST. STYLIDEAS LTD, AMSHOLD HOUSE, GOLDINGS HILL, LOUGHTON, ESSEX, IG10 2RW, UK. OBELIS S.A, Bd. GÉNÉRAL WAHIS 53, B-1030 BRUSSELS, BELGIUM.

WIRE SAFETY FOR UK USE ONLY:

WARNING: THIS APPLIANCE IS DOUBLE INSULATED. DO NOT CONNECT ANY WIRE TO THE EARTH TERMINAL.

IMPORTANT

As the colours in the mains lead of this appliance may not correspond with the coloured markings identifying the terminals in your plug, please proceed as follows: The wires in the mains lead are coloured in accordance with the following code:

Blue neutral [N] Brown live [L]



PLUG FITTING DETAILS (WHERE APPLICABLE)

The wire coloured blue is the neutral and must be connected to the terminal marked [N] or coloured black. The wire coloured brown is the live wire and must be connected to the terminal marked [L] or coloured red. On no account must either the brown or the blue wire be connected to the [EARTH] terminal. Always ensure that the cord grip is fastened correctly. The plug must be fitted with a fuse of the same rating already fitted and conforming to BS 1362 and be ASTA approved. If in doubt consult a qualified electrician who will be pleased to do this for you.

NON-REWIREABLE MAINS PLUG

If your appliance is supplied with a non-rewireable plug fitted to the mains lead and should the fuse need replacing, you must use an ASTA approved one (conforming to BS 1362 of the same rating). If in doubt, consult a qualified electrician who will be pleased to do this for you. If you need to remove the plug, disconnect it from the mains and then cut it off the mains lead and immediately dispose of its safely. Never attempt to reuse the plug or insert it into a socket outlet as there is a danger of an electric shock.

FS02RG

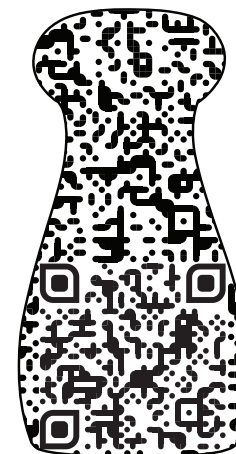
STYLIDEAS Ltd, Amshold House, IG10 2RW, UK.
OBELIS S.A, Bd. Général Wahis 53,
B-1030 Brussels, Belgium

@stylpro_uk

teamtom@stylideas.com

+44 (0)20 3225 5559

www.STYLIDEAS.com



SCAN ME

©2023 STYLIDEAS Ltd. All rights reserved.

STYLIDEAS owns trademarks, registered trademarks, patents, patents pending, design registrations and protection of the copyright of its products. www.stylideas.com/ip.

Distributed by STYLIDEAS Ltd,

UK: Amshold House, IG10 2RW, UK. +44(0)20

3225 5559 teamtom@stylideas.com.

EU: OBELIS S.A, Bd. Général Wahis

53, B-1030 Brussels, Belgium



Made in China.