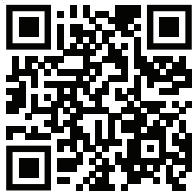


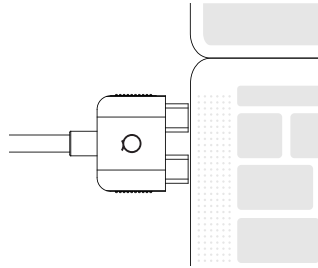
D2 InstantView Quick Start Guide



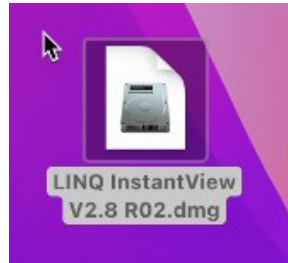
1

Scan and Download InstantView Management App from the LINQ website <https://linqbyelements.dk/d2instantview.html>

2 Connect the D2 Hub in to your Laptop



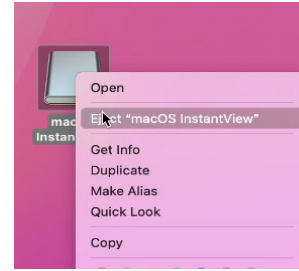
3 Double click the downloaded Installer file



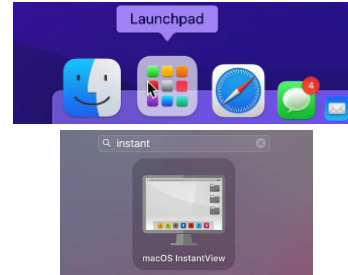
4 Drag the InstantView App into the Applications folder.



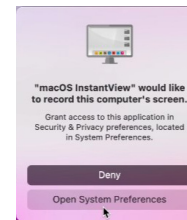
5 Close the window and eject the mounted installation drive.



6 Use Launchpad to start InstantView.

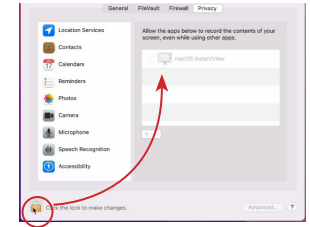


7 When opened for the first time InstantView will ask permission for Recording the Screen.



NOTE: this is needed to give access to the pixels needed to render the mirrored display which is being sent from HDMI 2.

7.1 To give permission for the first time, go to System Preferences > Security & Privacy.

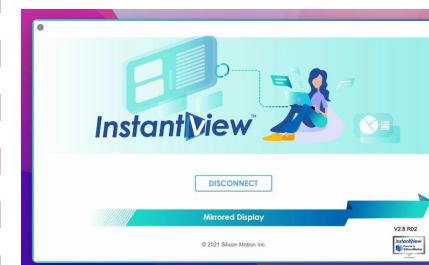


Unlock by clicking the Lock icon on the lower left to make changes and then tick the box besides macOS InstantView

7.2 Upon giving InstantView permission, you will get a pop up. Select Quit & Reopen.

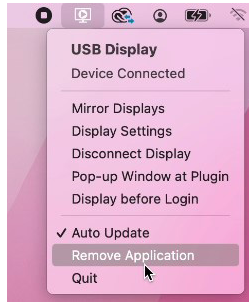


8 Connect the screen to HDMI 2. The InstantView Management screen will pop-up for the first time.



Uninstallation Guide:

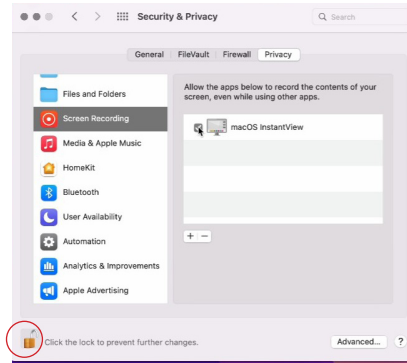
- 1 Right-click the **InstantView** icon in the **menu bar**, and select **Remove Application**.



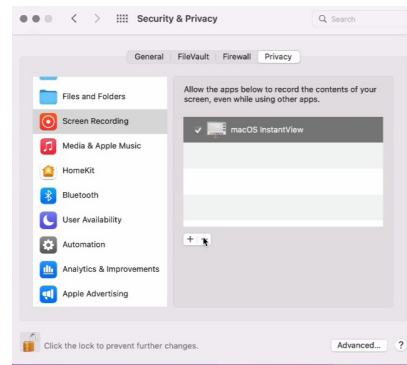
- 2 Open **Finder** and go to **Applications**. Search for **MacOS InstantView** and **Move to Bin**.



- 3 Go to **System Preferences > Privacy & Security > Screen Recording** and **unlock** to **allow changes**



- 4 Once the **unlocked**, you will be able to make changes. **Select InstantView** then **click - to remove**



InstantView has now completely been removed from MacOS

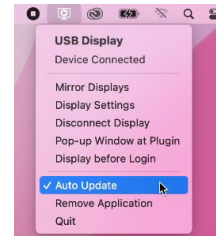
Tips:

NOTE: To access the **Context Menu**, **Right click** on the **InstantView** icon on the **top right** menu

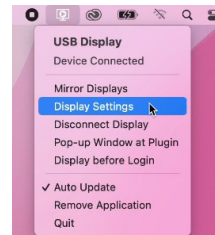
The screen scaling of your macbook changes whenever you plug your dual screen, it is completely normal.

You can change the stop this from happening by readjusting the screen scaling upon activating your dual screen.

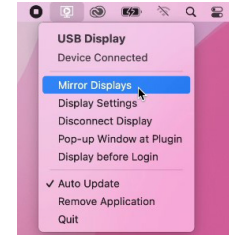
- 1 We **Recommend** to have the **Auto-update checked** to **automatically** keep your **InstantView Software Updated**



- 2 **Display Settings** is where you can **Adjust** your settings, all **settings** adjusted here will be **saved**.



- 3 **Mirror Displays:** Click here to **change** mode between **Mirror Display** or **Extended Display**.



Troubleshooting

if you experience any issues or have any question regarding the product, please visit the support and FAQ page on our website for most up to date information.

LINQ | Support
<https://linqbyelements.dk/support.html>

visit:
www.LINQbyELEMENTS.dk