


BBI Autosport	
Product Installation Instructions	
www.bbiautosport.com 714.843.0200	

Application	Install time	Difficulty
991 Turbo / GT3 / GT2RS / Carrera	6 hours	●●●○○

Professional installation recommended.
While it is possible to do this job alone, we highly recommend doing this with 2 people.
BBI Autosport is not responsible for injury or damage to persons or vehicles.
Install at your own risk.

PLEASE READ THE FULL INSTALLATION INSTRUCTIONS BELOW BEFORE PROCEEDING.

Tools Required:

10mm, 13mm, 16mm, 17mm Wrench/Socket

8mm Allen Head

E10 Socket Head

Screwdriver or Pick

Ruler

Masking Tape

Pen/Marker

Razor Blade

Adhesive

Zip Ties

1. Park your vehicle in an area where you don't mind it being disabled for a few hours. You will also need adequate room on both sides of your car to remove seats and install harness bar halves.
2. Disconnect the negative battery terminal using a 10mm wrench. Leave battery disconnected during install to avoid airbag faults that will occur when removing the seats.
3. Prep your roll bar halves
 - a. File down the mating surfaces on both sides of the bar to get rid of any powder coating that may have spilled over.



4. Remove the front seats

- a.** Remove seat belt using a 17mm wrench
- b.** Remove plastic trim on the front side of the seat sliders
- c.** Remove 4 E10 bolts that hold the seat down
- d.** Lean the seat back and disconnect the large yellow connector on the underside of the seat



5. Remove rear seat / seat delete panels

- a.** Using a small screwdriver or pick, remove rubbing lining from bottom of cubby
- b.** Remove plastic cover to expose 13mm nut. Remove nut.
- c.** Pull up on the outsides of the seat. The seat panel is velcroed down, pull hard.
- d.** Once the nut is removed and the seat is free from the velcro, remove the back seat panel.



- e. Be mindful of the parts that mate with the top of the center console. You may have to open the center console to give you more wiggle room.



- 6. Use masking tape to mark where the edge of the quarter panel meets the rear carpet piece.
- 7. Using your finger, pull to remove small plastic trim pieces from quarter panels.
- 8. Pulling up from the edges, remove the two plastic trim pieces from the rear carpet.
- 9. Pull firmly toward the front of the car to remove the carpet piece directly under the rear window.



- 10. Remove the large carpet piece
 - a. Pull up from the middle
 - b. Be mindful of leather quarter panels and other delicate materials
- 11. Using a helping hand, install the back half of the bar into the car (4x 8mm allens). It's easiest to lift one side at a time into the mounting location.



a. Do not tighten bar all the way. Leave it loose so you can mount the second half later on

12. Using a small ruler, eyeball the distance from the quarter panel to the edge of the harness bar. If your measurement varies from side to side, adjust the harness bar to center the best you can. Mark down measurement from quarter panel to bar once centered.

13. Using masking tape, mask off roughly 6" toward the center of the carpet, starting at the piece previously used to mark the edge of the quarter panel.

14. With the measurement taken during step 13, draw a line going parallel with the edge of the masking tape.

15. Align the edge of the stencil with the line drawn.

a. The bottom lobes of the stencil need to sit parallel with the edge of the carpet, and centered between the rounded edge, and the rounded corner of the carpet (the flat part).

b. Draw the stencil onto the masked carpet.

16. Using a razor blade, cut out the foam that sits behind the stencil on the backside of the carpet piece.

a. DO NOT CUT ALL THE WAY THROUGH THE CARPET





- 17.** Cut a slit into the carpet going from the edge to $\frac{3}{4}$ into the stencil, directly down the center.
 - a.** Open up the initial cut a little bit, making a skinny oval shape.
- 18.** Place carpet back into vehicle, wrapping the part we just cut, around the base of the harness bar.
 - a.** The carpet won't fit correctly the first time, and may be difficult to install.
 - b.** Once the top half of the carpet is sitting correctly in under the quarter panels, make a note of where the carpet needs to be trimmed around the harness bar. It's easiest to use a pen or dry erase marker to draw directly onto the masking tape.
- 19.** Trim the carpet to fit nicely around the harness bar. This takes time and is tedious. Cut small and be patient. You can always take more away, but you can't put it back once its gone. While making cuts, make sure that the carpet is happy all the way up to the rear window.
- 20.** Make sure that the bolts holding the rear bar in the car are still left loose





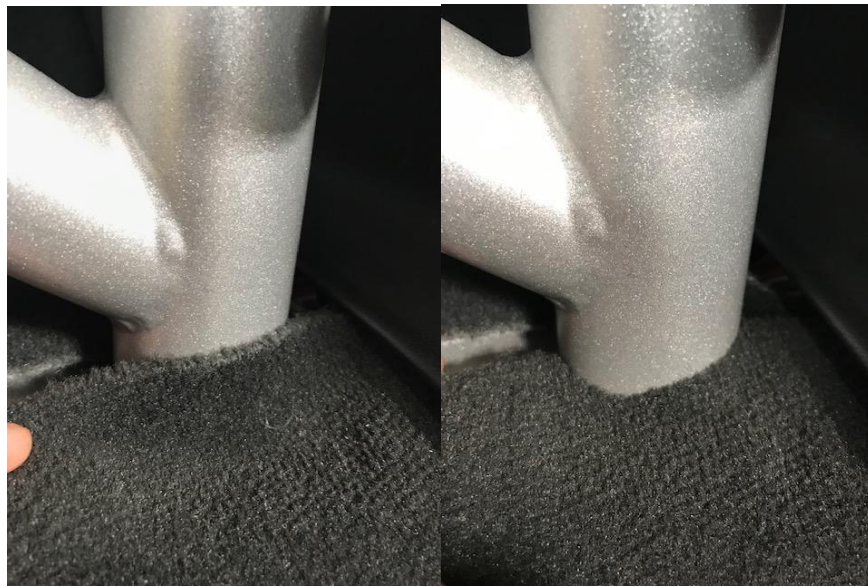
- 21.** Pull back carpet at the bottom edge of the rear seat area, exposing the wiring harness and the plastic guide.
- Remove the plastic harness guides
 - Zip-tie wiring harness and tuck it behind the quarter panel
 - Remove the two 16mm bolts going through the chassis



- 22.** Using your helping hand, install the main hoop of the harness bar
- Be mindful of interior pieces and windshield
 - Do not pinch the wiring harness under the bottom of the harness bar feet
 - Mate the couplers of the two bars first. Do not pull bar halves together with hardware. Make sure couplers are all the way mated before tightening.
 - Once couplers are tightened, re-install 16mm bolts through the bottom of the main hoop and into the chassis.



23. With the couplers and lower mounts tight, go back to the rear bar and tighten the four 8mm allen bolts near the rear deck.
24. Place the lower carpet piece near the base of the main hoop back into its home, tucked under the quarter panel. You will need to cut a small amount of the carpet to fit around the base of the harness bar



25. With the rear seat / seat delete panel you have removed from the car, remove the carpet / leather from its retaining clips on the back side.
 - a. Peel the corner of the carpet back so it is out of your way while cutting
26. Using a hole saw, cut a hole in the plastic seat similar to the picture.
 - a. Cut from the hole to the outside of the seat.
27. With the opening in both sides of the plastic panel, test fit in vehicle.
 - a. This will take some trimming to make pretty.
 - b. The center section of the seat should sit flush with the carpet in the rear.
28. Once the back seat panel sits happily in between the base of the harness bar, remove the panel once more
29. Re-wrap the carpet / leather around the plastic panel and secure the edges in the clips on the back side.
30. Cut the carpet / leather and wrap around the hole that was cut for the base of the bar.
 - a. Use an adhesive to secure the carpet on the backside of the seat panel.



31. Re-install back seat piece with rubber bushing and 13mm nut.

a. Re-install plastic cap and rubber liner

32. Re-install interior.

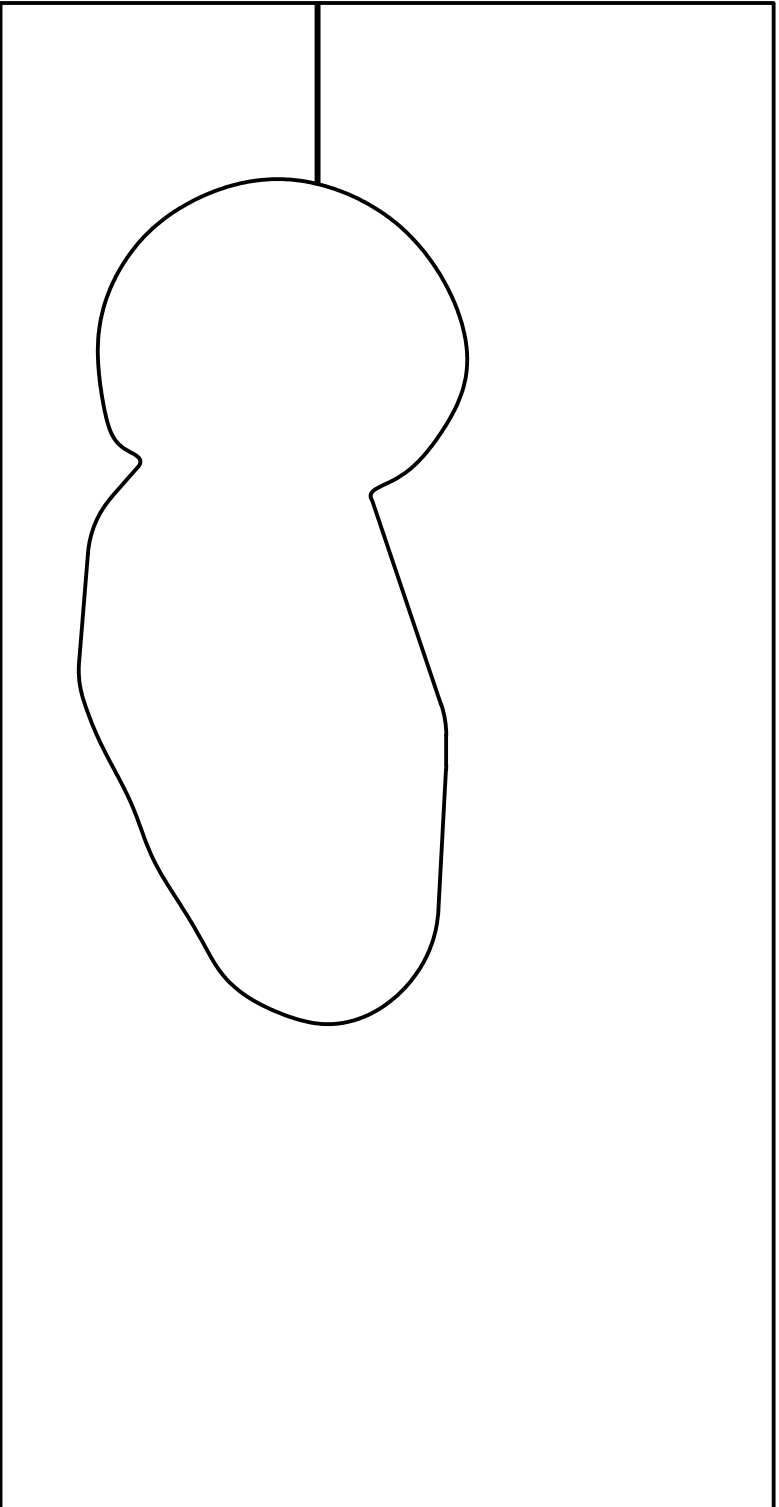
a. Install front Seats

b. Connect yellow connector

c. Bolt down seat with 4 fasteners

d. Fasten seat belt to seat





991 GT3 Harness Bar Cut Template
Start small and trim as needed to a perfect fit.

	PROPRIETARY AND CONFIDENTIAL THE INFORMATION CONTAINED IN THIS DRAWING IS THE SOLE PROPERTY OF BBi AUTOSPORT. ANY REPRODUCTION OR TRANSMISSION OF THIS DRAWING WITHOUT WRITTEN PERMISSION OF BBi AUTOSPORT IS PROHIBITED.		PART	PN#	REV
	991 GT3 Harness Bar		MATERIAL	FINISH	