



# Quick Installation Guide

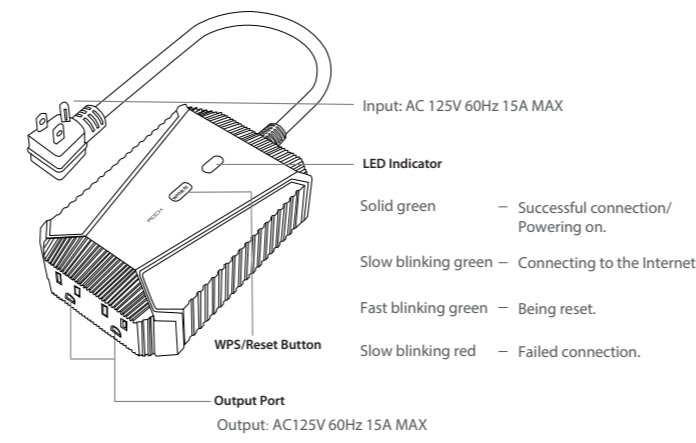
Outdoor Smart Plug with Built-in Wi-Fi Extender  
Model No. PE1



Need FREE technical support?  
Scan the QR code or visit:  
<https://rockspaceworld.com>  
24/7 Online AfterSales Service

Email: [techsupport@rockspace.com](mailto:techsupport@rockspace.com)  
Tel: +1 (833) 816-6268  
Service Time:  
EST 10:00 - 21:00 from Monday to Friday

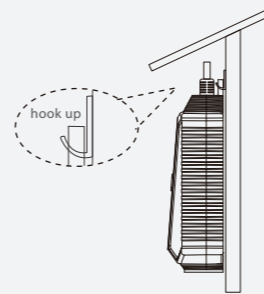
## I. Get started



## Connection and Installation

Choose a proper location near an AC outlet for your new outdoor plug. Fasten the plug (as shown on the right), if necessary, according to the cable length to prevent it from swaying while in use.

**Note:** Be sure to plug the jack with silicone plugs when it is not in use to prevent rainwater from entering the product and causing damage.



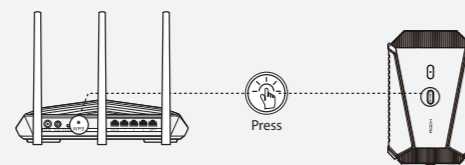
## I Power on

Plug the device into a power outlet. The LED indicator turns green.

## II Set up

### Method 1: Via the WPS Button

1. Press the WPS button on your router.
2. Within 2 minutes, press the WPS button on the device for 2 seconds.

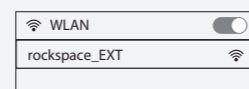


3. Wait until the LED on the device blinks green and turns solid, indicating a successful connection. If the Signal LED slowly blinks green, try again or use Method 2.

### Method 2: Via a Web Browser

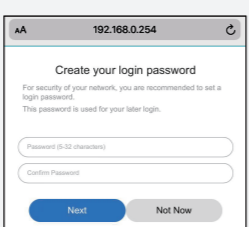
1. Connect your computer/smartphone to the device's network "rockspace\_EXT".

\*Note: When you are using a computer, unplug the Ethernet cable if any. When you are using a mobile phone, ensure the mobile data is disabled.

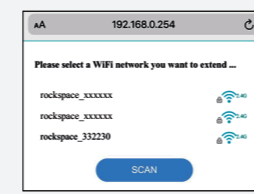


2. The login window pops up automatically. If it doesn't, launch a web browser and enter <http://wifi.rockspacewifi.com> or **192.168.0.254** manually to get started. Create a login password and record it down for later use.

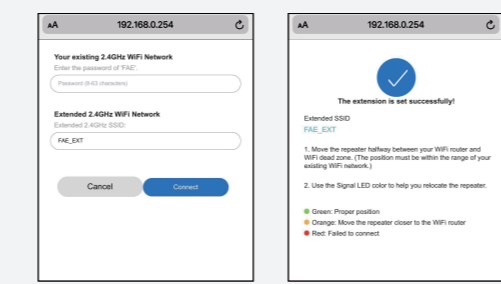
\*Note: If the login window does not appear, refer to FAQ > Q1.



3. Select the Wi-Fi network (SSID) you want to extend.



4. Enter the password of the Wi-Fi network you want to extend. Wait until the page shows you a successful connection.



## III Relocate

1. Plug in the device roughly halfway between your router and the Wi-Fi dead zone. The location you choose must be within the range of your router.
2. Wait for about 2 minutes until the Signal LED turns green. If it doesn't, relocate the device closer to the router to achieve better signal quality.



## IV Wi-Fi connection

Find the SSID (network name) in your Wi-Fi list to connect. The password of the extended network is the same as your current Wi-Fi network.

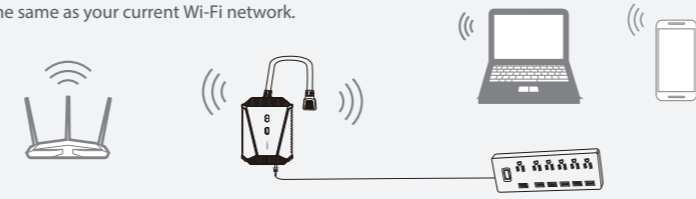
**Extended network name:**

Router's network name with "\_EXT" at the end.

**Password:**

Same as your router.

Note: If you want to change the extended network name, refer to Manage the Device.



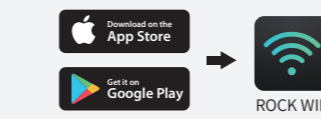
## Manage the device

### Access extender settings via a web browser

1. Connect your smartphone/computer to the device's network. If you are using a computer, unplug the Ethernet cable if any.
2. Launch a web browser and enter <http://wifi.rockspacewifi.com> in the address bar to log in.
3. Manage the device as needed.

### Access smart plug via the ROCK WIFI app

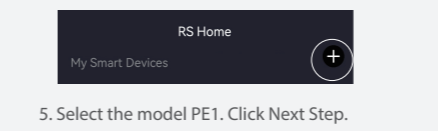
1. Connect your smartphone to the device's network.
2. Download the ROCK WIFI App.



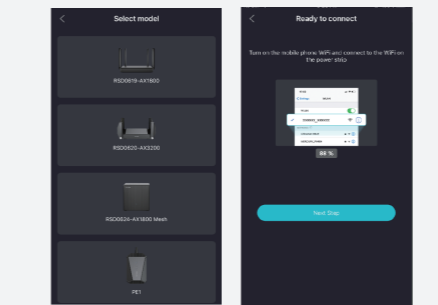
3. Launch the ROCK WIFI App and log in.

Note: If you are a new user, follow the onscreen instructions to register.

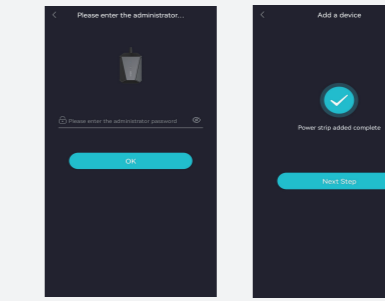
4. On the homepage, click +.



5. Select the model PE1. Click Next Step.



6. Enter the admin password you set through the web browser.



7. Manage the device as needed.

## FAQ

### Q1: What should I do if I cannot access the device's web management page?

- Make sure your computer or smartphone has connected to the device's network.
- Verify that <http://wifi.rockspacewifi.com> is correctly entered in the web browser and press Enter.
- Use another web browser and try again.
- Reset the device and try again.
- If you are using a computer, make sure it is set to obtain an IP address and DNS server address automatically.
- If you are still having problems, contact us for FREE 24/7 technical support.

### Q2: How do I reset the device?

With the device powered on, press the Power Button for 8 seconds. The device will reboot to its default factory settings.

### Q3: What should I do if the device cannot be connected successfully to the router?

- A1. Check the LED. Green light refers to A2. Red light refers to A3. No light refers to A4.
- A2. Green light shows the device has been connected to the router successfully and within the router's Wi-Fi coverage. If the network is working normally on other devices by connecting to the router's Wi-Fi, you might have overloaded the router by connecting too many devices. Disconnect some of the devices and ensure the device's priority connection to the router. If your device still fails to connect, refer to A5.
- A3. Red light indicates the need to change your device's location until the light turns green. The light is always red no matter how you relocate it? Make sure there are no metal objectives, closed doors or electromagnetic waves that could interfere with the signal transmission. If your device still fails to connect, refer to A5.

A4. If the signal LED is off, it shows there is no connection between the device and the router. Make sure you have not turned off or hidden the router's Wi-Fi signal. Also make sure you have not initiated encryption mode, MAC filter, Blacklist of the router. Don't know how to manage your router? Reset your router to its factory settings or contact your network provider. If your device still fails to connect, refer to A5.

A5. Reset both your device and router to clear their cache and then undertake all the connection and checking procedures again. "Reset and re-start" is one of the ultimate diagnostic actions you can perform at any time. If you still have a problem, contact us for FREE 24/7 technical support and describe your problem including router model no., device model no., and the solutions you have tried and failed.

## Safety Instructions

In order to make set-up as easy as possible, we would like to familiarize you with the features and functions of this special product. Please read this user's manual carefully and thoroughly and keep in a safe place for future reference. We thank you for your business and hope you enjoy this product.

### Caution

RISK OF ELECTRIC SHOCK  
DO NOT OPEN  
CAUTION: TO REDUCE THE RISK OF ELECTRIC SHOCK, DO NOT REMOVE COVER (OR BACK). NO USER-SERVICEABLE PARTS INSIDE. REFER SERVICING TO QUALIFIED SERVICE PERSONNEL.

⚠ This symbol is intended to alert the user to the presence of uninsurable "dangerous voltage" within the Products enclosure that may be of sufficient magnitude to constitute a risk of electric shock to persons.

⚠ This symbol is intended to alert the user to the presence of important operating and maintenance (servicing) instructions in the literature accompanying the appliance

### Caution

-TO PREVENT DAMAGE WHICH MAY RESULT IN FIRE OR SHOCK HAZARD  
-DO NOT EXPOSE THIS APPLIANCE TO RAIN  
-SHOCK HAZARD DO NOT OPEN

### Caution

These servicing instructions are used by qualified service personnel only. To reduce the risk of electric shock, do not perform any servicing other than that contained in the operating instruction unless you are qualified to do so.



## FCC Statement

This equipment has been tested and found to comply with the limits for a Class B digital device, pursuant to Part 15 of the FCC Rules. These limits are designed to provide reasonable protection against harmful interference in a residential installation. This equipment generates, uses and can radiate radio frequency energy and, if not installed and used in accordance with the instructions, may cause harmful interference to radio communications. However, there is no guarantee that interference will not occur in a particular installation. If this equipment does cause harmful interference to radio or television reception, which can be determined by turning the equipment off and on, the user is encouraged to try to correct the interference by one or more of the following measures:

- > Reorient or relocate the receiving antenna.
- > Increase the separation between the equipment and receiver.
- > Reorient or relocate the receiving antenna.
- > Increase the separation between the equipment and receiver.
- > Connect the equipment into an outlet on a circuit different from that to which the receiver is connected.
- > Consult the dealer or an experienced radio/TV technician for help.

Operation is subject to the following two conditions: (1) this device may not cause harmful interference, and (2) this device must accept any interference received, including interference that may cause undesired operation.

## Radiation Exposure Statement

This device complies with FCC radiation exposure limits set forth for an uncontrolled environment and it also complies with Part 15 of the FCC RF Rules. This equipment should be installed and operated with a minimum distance of 20cm between the radiator & your body.

This device complies with FCC radiation exposure limits set forth for an uncontrolled environment and it also complies with Part 15 of the FCC RF Rules. This equipment should be installed and operated with a minimum distance of 20cm between the radiator & your body.

## Caution:

**NOTE:** The manufacturer is not responsible for any radio or TV interference caused by unauthorized modifications to this equipment.



Our only official website: <https://rockspaceworld.com>  
We provide you with a 24-month warranty! Please do not trust any other website.