

Steel Bracket Fitting Instructions

Fixings supplied with our steel bracket rustic pine floating shelves.
Available for both solid walls and plasterboard walls*.

YOU WILL NEED...



Tape Measure



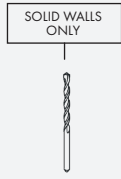
Pencil



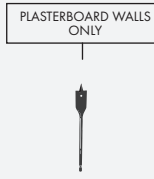
Hammer



Drill



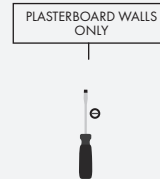
8mm Drill Bit



20mm Spade Bit



Spirit Level

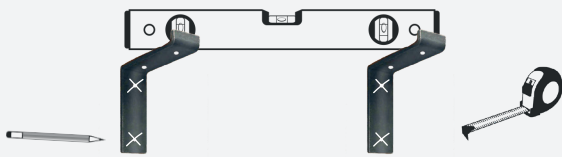


Flat Head Screwdriver



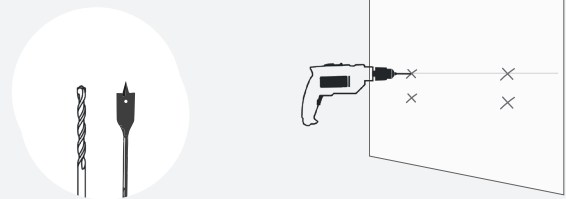
Phillips Head Screwdriver

STEP 1



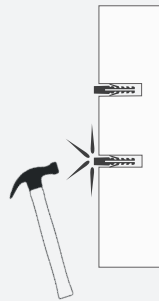
Mark out where you would like your brackets to sit on your wall making sure the markings are level with a spirit level.

STEP 2



Drill the wall deep enough to accept the wall plugs or Gript It fixings using an **8mm drill bit** for solid walls or a **20mm spade bit** for plasterboard walls.

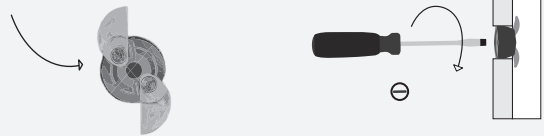
STEP 3 (SOLID WALLS)



Insert the wall plugs into the 4 holes and use a hammer to tap the wall plugs flush with your wall.

STEP 3 (PLASTERBOARD WALLS)

Slim gripping wings open in the cavity behind the plasterboard to provide a secure anchor and distribute weight more effectively.



Insert a gript it fixing into each hole and tap with a hammer so its flush with your wall. Use a flat head screwdriver to turn the cam and open the wings for super grip strength.

STEP 5



Line up the steel brackets with the wall plugs or gript it fixings and use a screw driver or a drill to screw in the appropriate fixings into position.

STEP 6



Place the pine shelf on top of the brackets and screw down for extra support in to the upwards facing holes.