



The Dipping Tank Company



THE HEART OF
SUSTAINABLE GARDENING

www.thedippingtankcompany.co.uk

About

Our Company

Our beautifully designed garden Dipping Tanks are not only eco-friendly but add an exciting new feature to your garden. The new way to store your harvested rainwater.

Why hide the way you store your harvested rainwater? Placing a plastic barrel down an alley or round the back of the shed might be the norm, but why should it be? Make your eco credentials a feature worth showing off. Our contemporary Dipping Tanks not only provide you with a source of rainwater but also a stunning feature for your garden.

Andrew



What are our Dipping Tanks?

A Dipping Tank is essentially a modern alternative to the common water butt, a convenient source of rainwater... but it's much more...

Uses

- A sustainable source of rainwater to keep your garden and house plants watered throughout the year.
- A place to grow aquatic / moisture loving plants.
- A innovative way to water your house plants and seed trays by capillary action (see accessories).
- As a raised pond, an ideal home for goldfish.

Benefits

- Quicker to fill your watering can than using a tap - No more holding the watering can under the tap whilst it gets heavier and heavier. A quick dip and you're off!
- A way of attracting more wildlife.
- Improve how eco-friendly your garden is by using less tap water.
- A replacement for your water butt.
- An eye-catching focal point - Add our blade style waterfall for extra interest (see accessories).



Our Dipping Tank's contemporary design mean they will be right at home in the most treasured spot of your garden.

Position your Dipping Tank close to a gutter downpipe and attach an ordinary diverter, this is all your need to harvest rainwater successfully. Alternatively have the water run directly into the tank from your greenhouse or potting shed gutter.

Explore The Range

We offer a range of Dipping Tanks to suit all gardens and styles. From sprawling acres to tiny balconies, our Dipping Tanks have found a home in many different settings.



Dimensions

436mm - Front to back

521mm - Bottom to top

Available in the following widths;

60cm Wide

111 Litres capacity

Fill up your 8 litre watering can 13 times.

1 Metre Wide

185 Litres capacity

Fill up your 8 litre watering can 23 times.

1.5 Metres Wide

277 Litres capacity

Fill up your 8 litre watering can 34 times.

2 Metres Wide

370 Litres capacity

Fill up your 8 litre watering can 46 times.

Need more capacity? Tanks can be daisy chained together to increase your supply.



The Details

The Dipping Tank Company's products are all professionally TIG welded to give an exact uniform finish. The use of CNC machinery by experienced engineers ensures the quality of our products is the highest possible. A level of detail that is rarely found in garden accessories.



The timber fascia is kiln dried and tanalised, then treated with an additional wood preserver. This makes sure it will last even the toughest outdoor conditions for years to come.

All tanks are made from aluminium so there's no possibility of rust. All tanks and accessories are powder coated to give long term protection as well as its modern style. This use of powder coating's robust nature also allows the tanks to stay looking fresh year after year. The mix of rust proof material and powder coating means that this asset to your garden will have a huge service life.

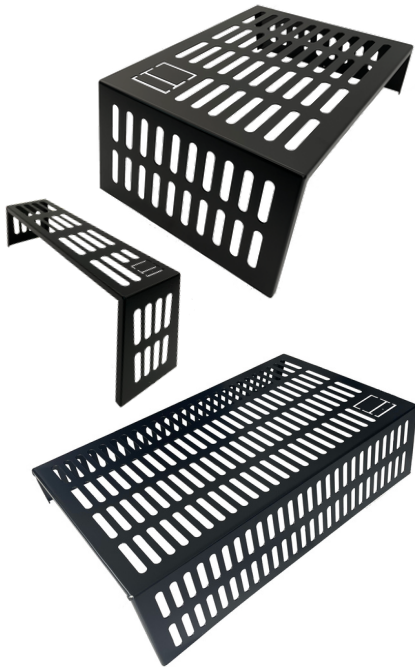


Best of all, everything is proudly made in the U.K. by craftsmen whose passion for detail rings through our products.



Accessories

Accessorise your tank with parts specifically designed to work only with our Dipping Tanks. Water your house plants or freshly sown seeds on our Trays. Make planting easier with Planting Shelves or show off your sustainably harvested water with a blade style waterfall.



Small, Medium, Large Planting Shelves

Plant It Right!

It's a common misconception that pond plants need to sit with the top of the pot out of the water. However many aquatic plants need the crown of the plant a few inches under the water. We've developed a Planting Shelf to help place your plants in just the right place.

This handy shelf will drop straight into the tank with ease creating a higher level for your aquatic plants to rest on. A slick alternative to filling your tank with old bricks and stones.

Is your tank in a windy spot? We also supply this kit with large ties to anchor the plants down to the tray if extra precautions are needed. If you have any goldfish living in your tank they will also appreciate this hiding place.

This planting shelf is supplied in the same durable finish as the Dipping Tanks, making them harder to see once installed ensuring the plants are the main feature.

Available in 3 sizes -

Small 11cm wide
Medium 30cm wide
Large 65cm wide

Puddle Tray

Fill with water from your Dipping Tank and water your plants in lots of different situations; Take this tray to the potting shed to soak your freshly sown seed trays, or place under a house plant that needs a drink. An ideal accessory for the greenhouse when potting up. Also fits neatly on top of the Dipping Tank.

When finished watering it can be hooked on the side of the tank ready for the next watering session. Strong and wide enough to hold large plants. Supplied in the same durable finish as all our Dipping Tanks.



Soaking Tray

If you're going to be watering your house plants, seed trays or newly potted plants this is the perfect addition to your tank.

The Soaking Tray works using capillary action - The gentlest and most thorough way to water your plants. Large enough to accommodate multiple small house plants and strong enough to take larger plants too. Once your plants are placed on this shelf the bottom 2 inches of soil will be submerged in fresh rainwater which the rest of the soil will then gently soak up. A great way of making sure all the soil is evenly saturated with fresh water without disturbing the top of the soil.

When not in use it can be easily stored on the side of the tank using an integrated lip. This could also be used as an additional higher level shelf for displaying your aquatic plants on that don't need to be submerged as deep.

Supplied in the same durable finish as all our Dipping Tank and will work perfectly with all sizes of Dipping Tank.

Living Wall

We've teamed up with Growing Revolution to bring you a totally different accessory to suit your 60cm Dipping Tank. This popular Living Wall system is the best one out there with features including;

- Water reservoir (holds 1.8 litres).
- Water indicator - Tells you when to fill up.
- No need to worry about over watering. Overflows back into the Dipping Tank.
- Each planting trough is 12cm deep and holds up to 4 x 1LTR (13cm sized plants)
- Simple Installation.
- Made from 100% recycled plastic.



Waterfalls



Available in 2 sizes. 30cm and 75cm wide.

What better way to present your harvested rainwater than turning it into a classy ribbon waterfall? Adding movement and the sound of running water changes the atmosphere in your garden instantly.

Both waterfalls use the same bespoke mounting system that hooks on the back edge of the tank and locks into place. What could be easier? Also notice this mounting system hides the connecting hose for a sleek appearance. Inside the waterfall is a ledge to place aquatic plants, just right for 1 litre pots.

Supplied in the same durable finish as all our Dipping Tanks.

In the kit you will receive everything you need to get the waterfall up and running, including high quality pump and hose.



Is 1 Dipping Tank not enough? Want to add another tank for a different use? With our Link Kit you can daisy chain tanks together, making the most of a free and sustainable water source.

Link Kit



Overflow

If you harvest your rainwater without a diverter you will need something to stop it overflowing once full.

This easy to install kit will screw straight onto the side of your tank. Run your overflow hose to a drain, soak away or even an area of the garden that needs a bit more water.

Choose the length of hose you need depending on where you want your excess water to go. All supplied in black to match the sleek Dipping Tank.



Examples



These versatile Tanks are ready to be set up as you please, there is no assembly when they are delivered. Simply take out the packaging, place on a hard base, level with the provided spacers and setup as you would like. Whether you are adding the tank as a raised pond or setting up to harvest rainwater.

Choose from a wide range of accessories to personalise your setup.



Dipping Tank not harvesting rainwater, instead being used as a free standing pond, home to Goldfish. Great for a family garden.

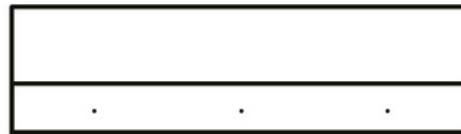
Dipping Tank with diverter on the downpipe. Topping up when it rains and excess water flows down the downpipe.

Dipping Tank with downpipe straight into the tank then use the overflow accessory to divert the excess away. The perfect addition to your greenhouse.

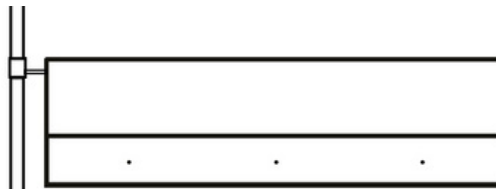
Any size tanks in the range can be linked together to increase the capacity and uses.

Link at the bottom and the water level will rise and fall together - Perfect for large gardens with a lot of watering needed.

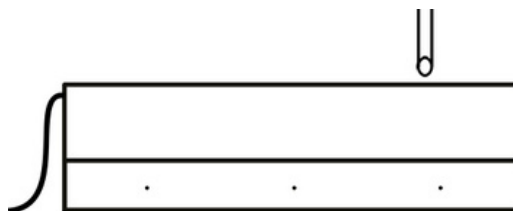
Link the tanks at the top, once full you can dip from the left tank whilst the right tank stays full, ideal as a pond with fish and aquatic plants.



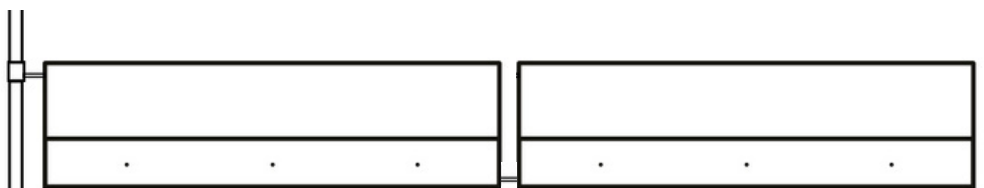
Installation can be as quick as 10 minutes for this setup, level on a patio or deck using provided spacers. Then fill with water.



You can use a diverter with plastic, aluminium or cast iron down pipes. Speak to us if you need help finding the right diverter for you.



A great way to harvest rainwater from a garden studio, glasshouse, shed or greenhouse.



Specialised Fabrication



As everything is made by us we are also able to cater to your bespoke requirements. Dreaming up something big or just after a little tweak? Share your dreams with us and let us create something special.

This customised tank looks very similar to our off the shelf Dipping Tank range but this customer has had some important tweaks made to get this tank to work as the centre piece of their water feature.

Additional ports on the back of the tank are fed with filtered water from the large pond. The water flows over the custom made waterfall as the header for the stream. The Dipping Tank is still used for dipping and uses a selection of accessories to add aquatic and water loving plants.



Bespoke Finish

This garden designer knew exactly the look they wanted for their client's water feature and we were happy to help out. Painted in the specific RAL number to match their client's windows, it fits in perfectly. We took care of the subtle touches like a clear logo sticker to blend in with the paint and the usual fittings on each end of the tank painted in the matching colour. Even the bolt heads and washers that secure the timber fascia have been painted to match. This extra thought and little touches are what set us apart from the rest.





We have combined years of experience in high quality manufacturing and a love of domestic horticulture to develop a product to bring rainwater harvesting stylishly up to date.

Questions?

How do I keep the water from going green? 1, Frequent dipping and replenishing with harvested rainwater. 2, Add aquatic plants to create a natural balance. 3, Add a waterfall to help oxygenate the water.

Can I put fish in there? - Yes! You can even have fish living in your harvested rainwater, all you need is a small filter just like any other pond. Just be careful not to scoop them out when dipping!

How does the diverter not overflow? Using the same principals a diverter on a water butt. Once the Dipping Tank is full the excess water runs back into the diverter then down the downpipe.

How many plants should I have? There's no right answer here but for the best appearance go for 1 tall, 1 medium and one floating. Generally the more plants the better it will look!

I have a small north facing garden, will this be ok? Yes, you will just be more limited to what plants you can have, but there are still plants that will thrive in this location.

What about ice? Our products have been extensively tested before bringing to market. Tested in temperatures down to around -10C (in winter 2021). Also temperatures over 30C.

Is It easy to move? Yes, once emptied the lightweight aluminium construction means even our biggest Dipping Tank can be picked up and relocated, perfect for gardeners in rental properties or when moving house.



Reviews

"Absolutely love our new dipping tank! It looks amazing in our garden and we've had so many compliments about it. The kids love using it to water the garden and are excited to get fish soon too. Fantastic and helpful service from Andrew who also gave us great tips about planting. Can't recommend this top quality product enough!"

Andrea - Sawston

"Where do I start!? Not only do I have a huge supply of rainwater for the garden, I now have a new pond too! All high quality products and easy to set up."

Simon - Suffolk

"Excellent and efficient service from start to finish. The company showed great attention to detail and we've been absolutely delighted with our dipping tank!"

Tom - Suffolk

"One of the best purchases we've made this year - looks great in the garden, the kids love having fish to feed, and quality is excellent. Andrew is also so super kind and helpful! Highly recommend."

Amy - Cambridge

"We have had our dipping tank for a few years now, and can't imagine gardening without it! Such a brilliant idea making watering the garden a quick and easy task. Customer service was fantastic from the time we ordered it to when it was swiftly delivered! A big thank you to the team at The Dipping Tank Company."

Sandra - Fulbourn

"I bought the 2 metre dipping tank. I've had it situated pride and place on my patio and I'm extremely happy with it. The quality and finish is superb and still looks new even after roughly 2 years."

Martin - Cambridgeshire

COME AND SEE OUR DIPPING TANK DISPLAY AND SHOW ROOM IN SOUTH CAMBRIDGE.

Let's Connect

Phone
01223 502426

Website
www.thedippingtankcompany.co.uk

Email
sales@thedippingtankcompany.co.uk

Social Media
[@thedippingtankcompany](https://www.instagram.com/thedippingtankcompany)

