



VICTORIA
Butterfly
GARDENS



insectarium

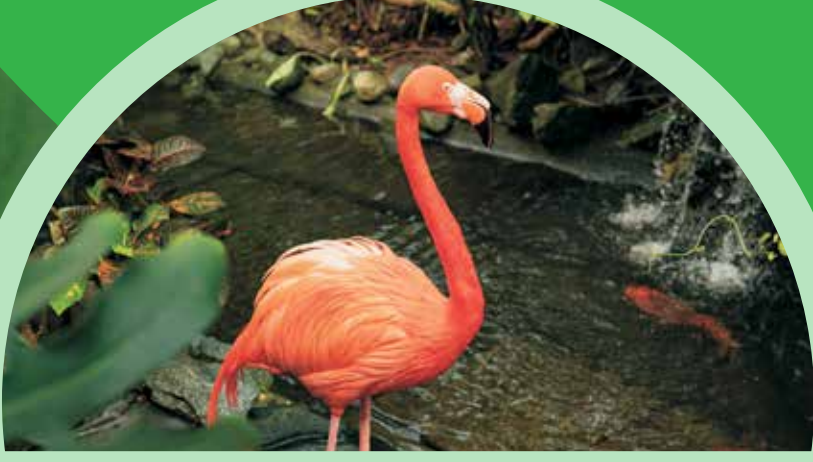


Reference Chart

Butterflies, plants and other animals

Meet the Creatures

Most of our animals are rescues, donations or adoptions.



FLAMINGOS

"Mango"

North & Central America



ECLECTUS PARROT

"Little E"

Papua New Guinea



CUVIER'S DWARF CAIMAN

"Javier"

North & Central South America



BLUE-AND-GOLD MACAW

South America



POISON DART FROGS

Central and South America



FLY RIVER TURTLE

Australia & Papua New Guinea



GREEN IGUANA

Central & South America



GREEN-WINGED MACAWS

"Macawley" & "Azrael"

South America



RED-FOOTED TORTOISES

Northern South America



ORANGE-WINGED AMAZON

"Leo"

South America

Garden Species



ANGEL'S TRUMPET

Brugmansia 'Charles Grimaldi'
South America



PINK CHENILLE

Acalypha hispida
South East Asia



PITCHER PLANT

Nepenthes species
South East Asia



BROMELIAD

Neoregelia Hybrids
Central & South America



SKY CLOCKVINE

Thunbergia grandiflora
Southeast Asia



PEACE LILY

Spathiphyllum wendlandii
Central & South America



BLUE PORTERWEED

Stachytarpheta jamaicensis
Caribbean



LANTANA

Lantana camara
Central & South America



PAPAYA

Carica papaya
Mexico & Central America



INDIAN CLOCKVINE

Thunbergia mysorensis
Southern India



insectarium



DERBY'S FLOWER BEETLE

Dicronorrhina derbyana
Central to Southern Africa



MALAYSIAN DEAD LEAF MANTIS

Deroplatys lobata
South East Asia



BRAZILIAN SALMON PINK BIRD-EATING TARANTULA

Theraphosa stirmi
Guyana



LEAFCUTTER ANTS

Atta cephalotes
Mexico to Bolivia



SPINY STICK INSECT

Extatosoma tiaratum
Australia



GIANT FOREST SCORPION

Heterometrus spinifer
South East Asia



CELEBES LEAF INSECT

Phyllium celebicum
Sulawesi



JUNGLE NYMPH

Heteropteryx dilatata
West Malaysia



GIANT STICK INSECT

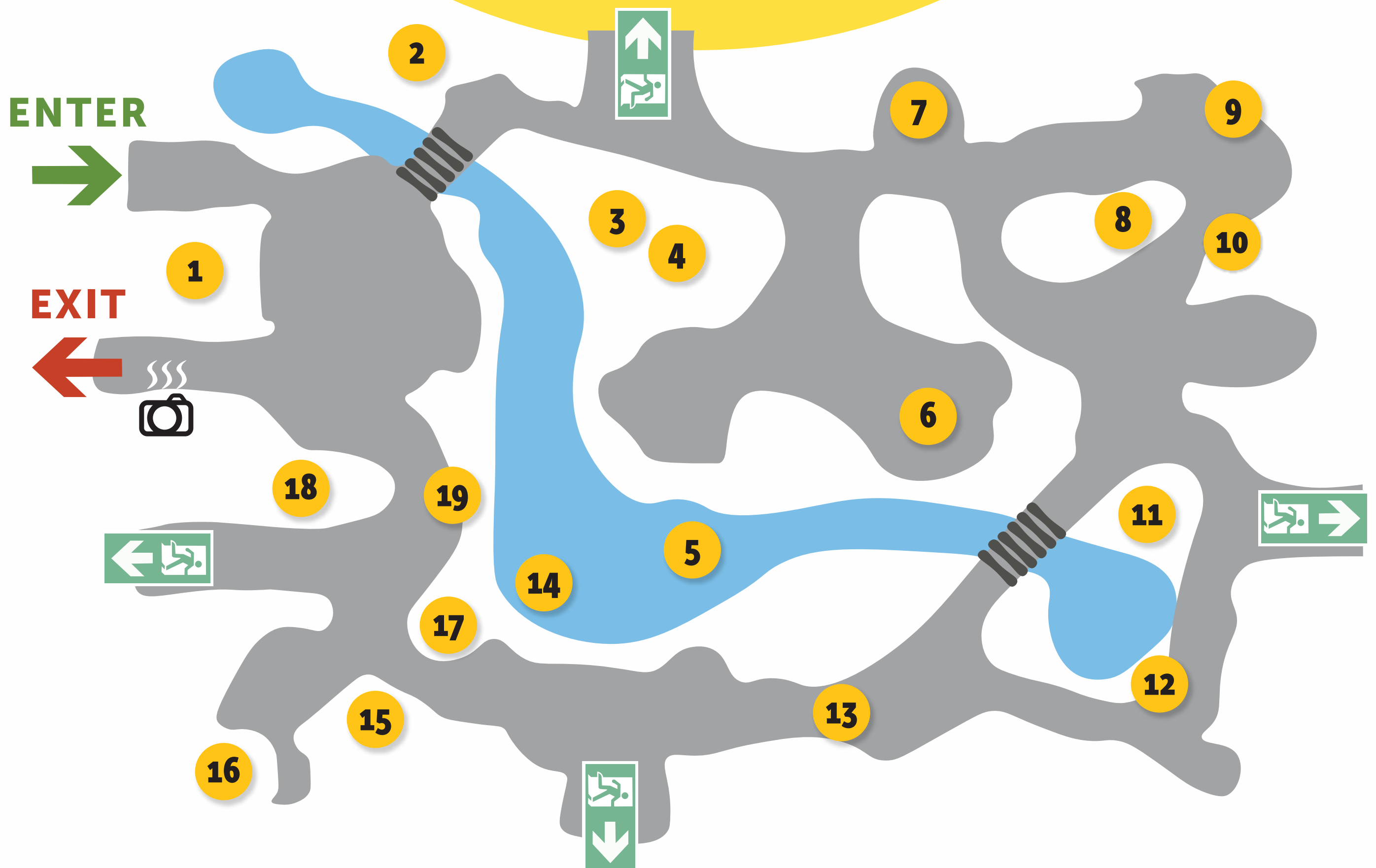
Phobaeticus serratipes
West Malaysia



NEW GUINEA SPINNY STICK INSECT

Eurycantha calcarata
New Guinea

Treasures of the Rainforest



- 1 EMERGING WINDOW** Imported butterfly chrysalides are hung until they emerge and are released into our garden. We import between 600–1,400 chrysalides each week from over 70 species originating all around the world.
- 2 VANILLA ORCHID** This large vine is where Vanilla comes from. Vanilla is an orchid and is the second most expensive spice in the world due to; needing to be hand pollinated and taking a very long time to mature each pod.

Scroll for 3-19

- 
- 3 RED-FOOTED TORTOISES** These medium-sized tortoises are from South America and generally average 30cm long as adults but can reach over 40cm long.
 - 4 SHADOW** Shadow is a Blue-and-gold Macaw who loves to say “Hi” and “Hello” to get you to come over and talk to him.
 - 5 FLAMINGO POND** This pond is home to our Caribbean Flamingo, dozens of large koi and numerous species of other tropical fish.
 - 6 JEWELS OF THE RAINFOREST** In this display you can view an array of poison dart frogs from Central and South America.
 - 7 LIFECYCLE DISPLAY** See caterpillars up close as they hatch from an egg, grow, and pupate.
 - 8 AMAZON OASIS** Gaze into this tropical pond and enjoy an array of South American fish and tropical plants.
 - 9 FLY RIVER TURTLE** Visit Reginald the Fly River turtle and the colourful school of Amazonian Rainbow fish he shares his home with.
 - 10 JAVIER THE CAIMAN** Meet Javier, the small yet formidable Cuvier's Dwarf Caiman, enchanting all with his charismatic presence and captivating nature.!
 - 11 BAMBOO** This giant timber bamboo is a close relative of grass but can reach over 120 feet tall in the wild!



Scroll for 12-19



- 
- 12 EPIPHYTES** An epiphyte is a plant that grows on another plant or tree for support but does not take any nutrients from their host. In the tropics, many creatures depend on them for food, protection and reproduction.
 - 13 BUTTERFLY ALLEY** Watch as butterflies feed on various nectar plants and go about their day.
 - 14 TURTLE LOG** This log is used by dozens of turtle to bask and warm up on sunny days.
 - 15 GREEN-WING MACAWS** Meet Macawley and Azrael! These two young Macaws love to “Meow” and play around on their perch.
 - 16 COMMUNITY CORNER** Make a wish for the community. Please drop a coin in our wishing well. All proceeds are donated to various local charities.
 - 17 PINK CHENILLE PLANT** This exotic plant is native to Malaysia and is a favourite in our gardens. The only butterfly that feeds on this plant is the White Tree Nymph.
 - 18 IGUANA TREE-HOUSE** Look out for the Green Iguana as he basks and lounges in his tree house.
 - 19 CARNIVOROUS PLANTS** Insects beware of these pitcher plants! These amazing plants can attract, capture and digest insects and occasionally small animals to get all the nutrients they need to grow.
- 



female

male

PALMFLY

(*Elymnias hypermnestra*)

India to Solomon Islands 65-75mm



KING SWALLOWTAIL

(*Papilio thoas*)

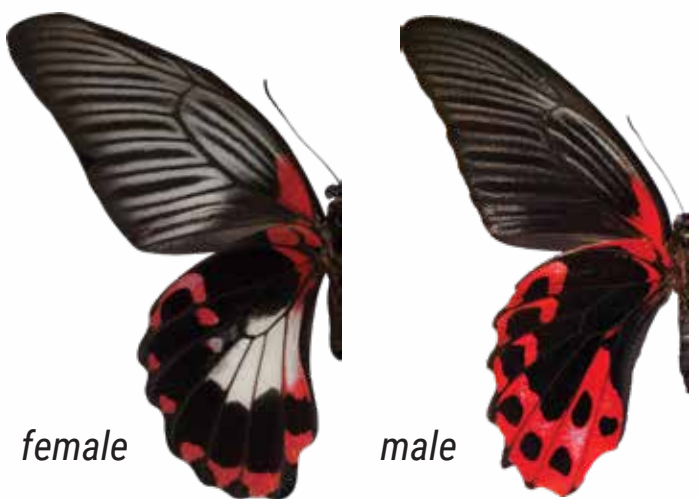
Costa Rica 100-130mm



PLAIN TIGER

(*Danaus chrysippus*)

Costa Rica 70-80mm



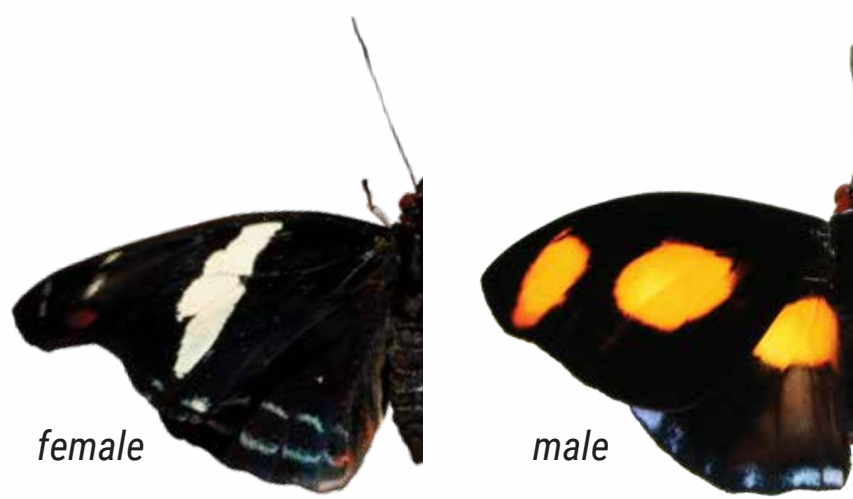
female

male

SCARLET MORMON

(*Papilio rumanzovia*)

Philippines 120-140mm



female

male

BLUE-FROSTED BANNER

(*Catonephele numilia*)

Costa Rica 55-70mm



GREEN MOSS PEACOCK

(*Papilio palinurus*)

Philippines 80-100mm



female

male

GREAT MORMON

(*Papilio memnon*)

Philippines 120-150mm



GOLDEN HELICON

(*Heliconius hecale*)

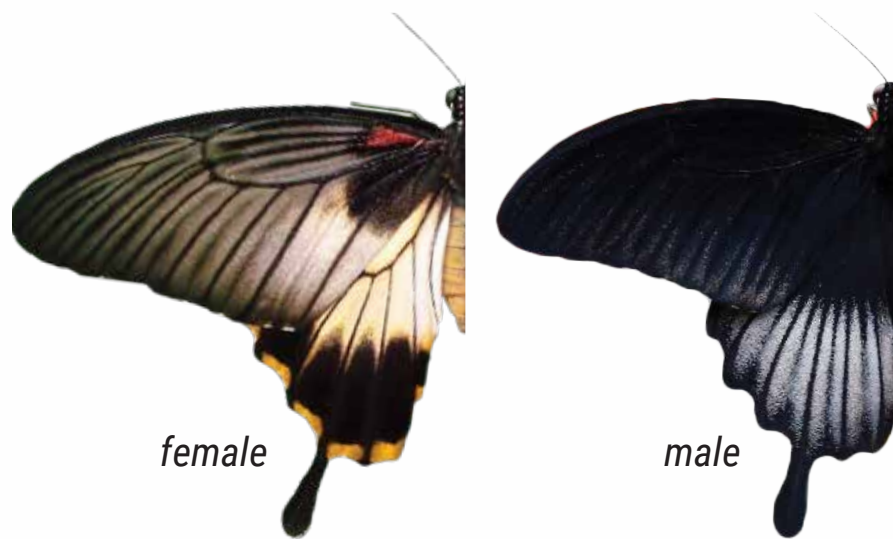
Costa Rica 60-70mm



ZEBRA BUTTERFLY

(*Heliconius charithonia*)

Costa Rica 60-70mm



female

male

ASIAN SWALLOWTAIL

(*Papilio lowlii*)

Indonesia 110-130mm



GIANT OWL BUTTERFLY

(*Caligo memnon*)

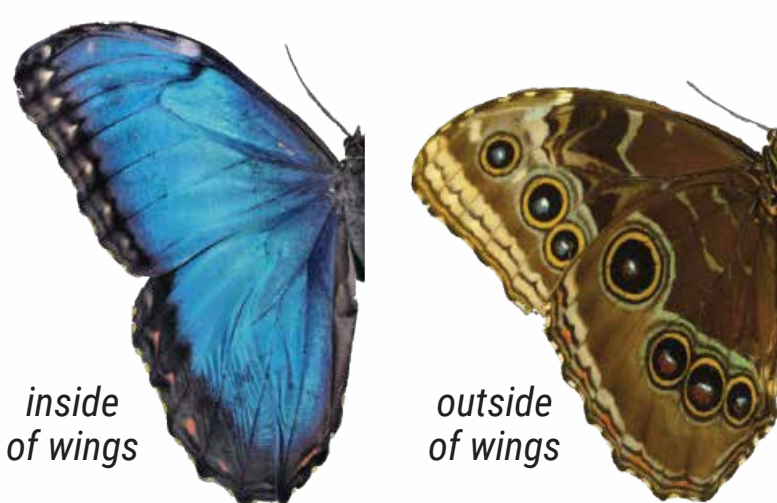
Costa Rica 115-150mm



BROWN CLIPPER

(*Parthenos sylvia*)

South East Asia 85-90mm



inside of wings

outside of wings

BLUE MORPHO

(*Morpho peleides*)

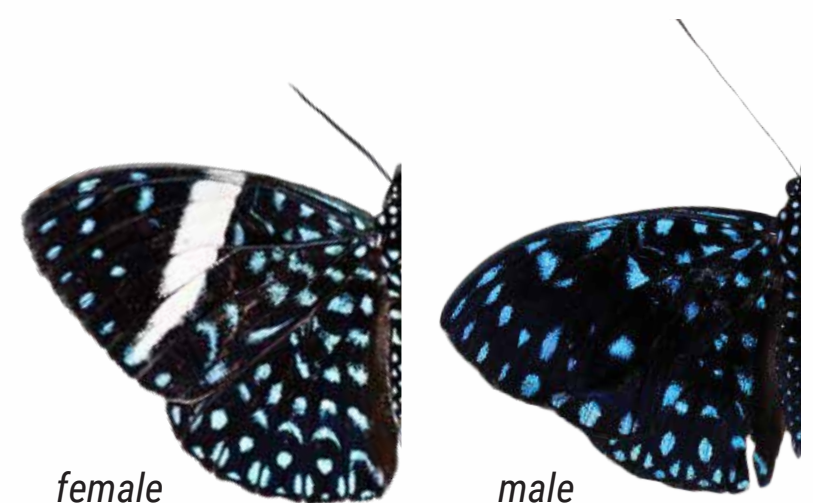
Costa Rica 100-150mm



WHITE TREE NYMPH

(*Idea leuconoe*)

Philippines 120-150mm



female

male

STARRY NIGHT CRACKER

(*Hamadryas laodamia*)

Costa Rica 60-70mm



LACEWING BUTTERFLY

(Cethosia biblis)

Philippines 80–90mm



PINK CATTLEHEART

(Parides iphidamas)

Costa Rica 80–100mm



BLACK & WHITE HELICON

(Heliconius cydno)

Costa Rica 60–80mm



GREAT EGGFLY

(Hypolimnastis bolina)

Philippines 70–85mm



POSTMAN BUTTERFLY

(Heliconius melpomene)

Costa Rica 55–80mm



JULIA BUTTERFLY

(Dryas iulia)

Costa Rica 80–90mm



GREAT ORANGE-TIP

(Hebomoia glaucippe)

Philippines 90–100mm



TAILED JAY

(Graphium agamemnon)

Philippines 80–90mm



GIANT ATLAS MOTH

(Attacus atlas)

South East Asia 150–262mm