

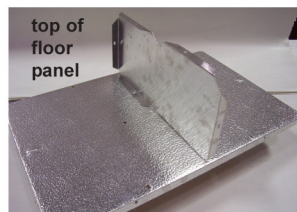
ASSEMBLY INSTRUCTIONS

for Purple Martin House

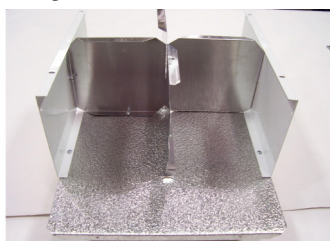
WatersEdge Suite PMW2, PMW3 & PMW4

Tools Needed: Phillips screwdriver, 5/16 wrench, pliers or adjustable wrench

- 1** Attach the galvanized divider stamped “A” to the top of the floor panel (across short side) on the side stamped “UP” and **through to the base plate** under the floor panel with 2 screws and nuts (nuts always with white nylon insert out), do not tighten. This is an important first step--**don't forget the base plate on the bottom!!**

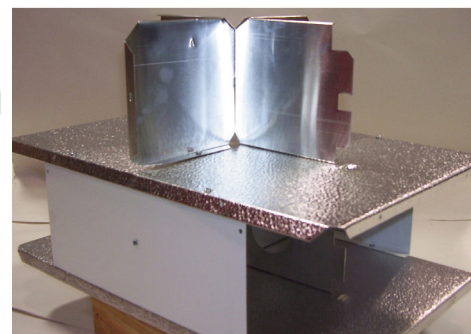


- 2** Take the galvanized divider with 2 holes and place it with slot down into the slot of the galvanized divider stamped with "A" and secure with 2 screws through the floor and base plate. Tighten all 4 screws. **Note: Galvanized dividers only used on bottom floor.**

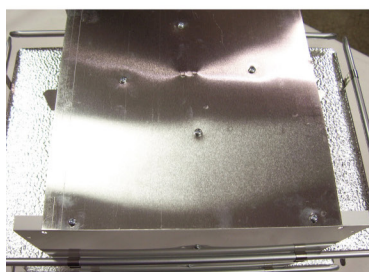


- 3** Place 1 white side panel with the stamped “UP” facing up on the floor assembly and attach with 2 screws and nuts to the floor panel and 1 screw and nut through divider “A”. Repeat this step on the other side.

- 4** Place the next floor panel on top of the completed floor unit. Repeat the instructions for placing and attaching the “A” divider and other divider (2 holes-no marking). Secure with screws and nuts through the new divider, the floor and the lower dividers. Attach 2 more white side panels as in Step 3.

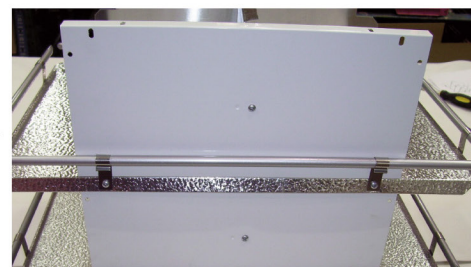


- 5** Repeat Step 4 for each floor unit. Example: 3 floor units for PMW3 model.

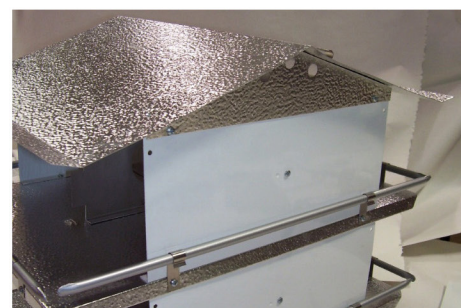


- 6** Attach the ceiling plate (with the stamped “UP” facing up) with 8 screws and nuts through the plate, side walls and interior dividers.

- 7** Attach 2 rail clips with screws and nuts on each side of the outside of the white panels (loop of clip facing **outward**). Do not tighten. Turn the loop of the clips up, center the 19” rod along the side and snap onto the clips on each side. Tighten the 4 screws. Attach 2 clips with screws and nuts on the short sides, but face the loop of the clips **inward**. Turn the loop of the clips up, center the 12” rod along the side and snap onto the clips on each side. Center and tighten the 4 screws. Repeat on all floors.



- 8** Attach the roof assembly to the house at the 4 screw locations.



9 Attach top perching rails by rotating the clips so the loop is at the peak of the roof. Center and snap the top perching rail into place.



10 Attach purple martin decals to the doors as shown (opposite the crescent entrance hole).

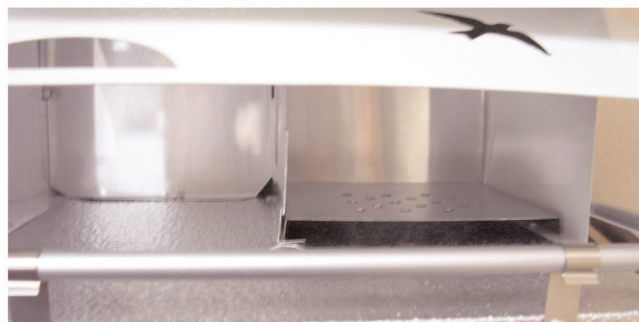
Note that on the WatersEdge, there is a left hole and right hole door. When installing the suite doors place each entrance hole opening opposite each other so the birds enter on different ends of the porch.



11 Install each door to the INSIDE of the wall panels, vents to the top, holes to the bottom. It is important to have the door up when doing this. Tighten each side enough to allow each door to remain open, but not so tight that they bind when opened & closed.

12 Swing the door downward so the bottom edge catches the indentation in the floor panel to lock into place. To open the door apply enough pressure to the bottom of the floor for the bottom of the door to pop out of the indentation. This is how you will check the nest by opening and closing these doors.

13 Place nesting trays (square with many holes) inside the compartment opposite the hole. This keeps the nest off the floor to keep it dry.



Shown assembled is the PMW2 2 Floor Waters Edge Suite

Your house is now ready for the mounting pole.

Thank you for purchasing one of our fine products. If you have any questions or would like more information, please email us at birdlovers@birdschoice.com. Visit our website www.birdschoice.com for more of our professional outdoor birding supplies.

Proudly made in Chilton, Wisconsin, USA according to Birds Choice quality standards and specifications.

birds
CHOICE

477 Vogt Lane • Chilton, WI 53014
866-995-BIRD (2473) • www.birdschoice.com

ASSEMBLY INSTRUCTIONS for Roof

1 Locate the roof section and 2 roof peak sections.

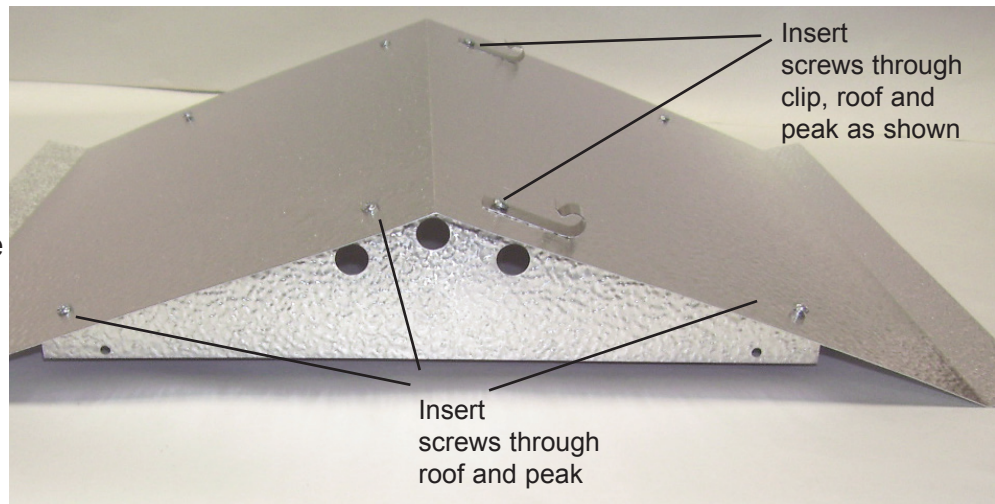
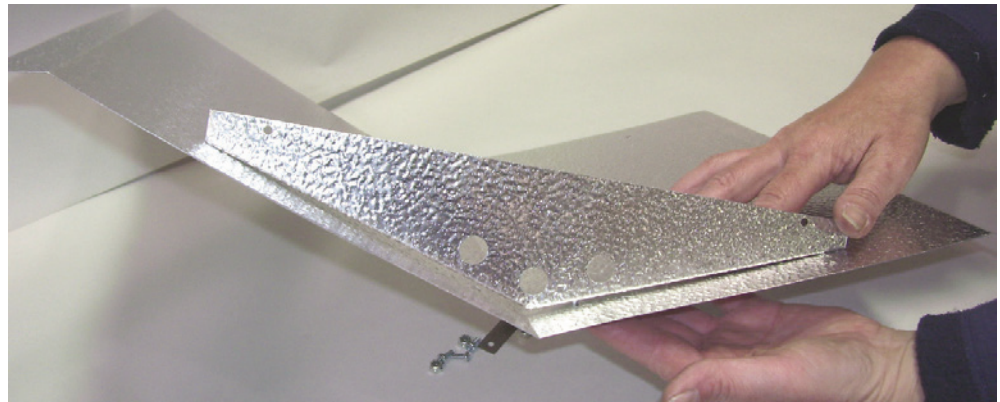
2 With the bend on the peaks to the inside of the roof, put 2 screws through from the top of the roof and through the hole on the bend on the peak, (outside) short ends first. Secure with nuts.

3 Put 1 screw through the holes on the roof and peak towards the top of the roof. Secure with nut.

4 Place one rail clip on top of the roof, insert screw through clip, roof and peak. Secure with nut.

5 Repeat Step 2, 3 and 4 to secure the other peak to the roof section. The rail clips should be on the same side as shown in the picture. Turn rail clips up so loop is at the peak of the roof.

6 After all 8 screws are tightened, the roof is ready to be attached to the house.



birds
CHOICE

477 Vogt Lane • Chilton, WI 53014
866-995-BIRD (2473)
www.birdschoice.com

Purple Martins are almost totally dependent on man-made housing and return to the same house year after year even though they fly thousands of miles to migrate in South America.

Purple Martins nest and raise their young in the United States. Should Americans fail to continue supplying martins with man-made housing, they would likely fall into extinction.

Purple martins eat only flying insects which they catch in flight. They feed during the daytime and their diet is diverse. They also drink and bathe on the fly.

Attracting Martins

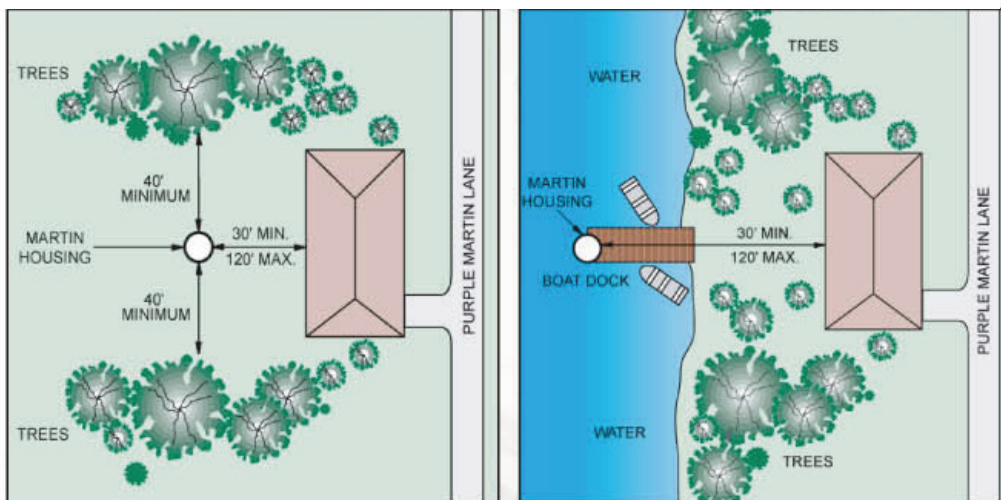
Providing proper housing is the true key to success.

1. Locate your purple martin house in the right area. There should be no trees taller than your purple martin house within 40 feet.
2. Martins love humans, so your purple martin house should be 30-120 feet away from your house or where humans gather regularly.
3. Your purple martin house should be erected on a telescoping pole for easy nest checks and cleaning at the end of the season. Nest checks will not cause martins to abandon their nests or their colony site.
4. Keep predators from entering your purple martin house, such as sparrows, starlings, snakes and raccoons. If any other species of bird is allowed to claim martin housing first at an uncolonized site, any martins that may come around are not likely to stay because they will be aggressively chased away.
5. To check nests or to clean the house after the purple martins have vacated it and headed south, move the porch divider out of the slot and swing to the left or right. Lift the door up. To close, push the door down and swing the porch divider back to the locking position.

For more information, visit <http://purplemartin.org>



The nest, constructed by both male and female, is composed of a collection of twigs, grasses, straw. If during a nest check you see the cavity filled with a mass of grass, feathers, and trash, remove it. House sparrows should not be allowed to occupy or share the martin house at any time of the year.



birds
CHOICE

Thank you for your purchase.
If you have any questions,
please contact us at
866-995-BIRD (2473) or email us
at birdlovers@birdschoice.com.
Made in Chilton, WI, USA