



TWC Owner's Manual

Instructions for Assembly, Operation, Maintenance, Transportation, and Storage



Read and understand this Owner's Manual completely before operating the TWC

All operators of the TWC must read and completely understand all safety, operating, maintenance, transportation, and storage instructions. Failure to properly operate and maintain the TWC can result in serious injury or death to the operator and bystanders, as well as damage to the TWC.

Table of Contents

- Terminology.....3
- Safe Operation of the TWC.....4
- General Overview.....6
 - TWC-12.....10
 - TWC-16.....12
 - TWC-24.....14
 - TWC-32.....18
 - Telescopic Axle Components.....22
- TWC Specifications.....23
- Ensuring the Longevity of the TWC.....26
- Assembly and Repair.....30
- Hydraulic Schematics.....64
- TWC Transport.....68
- Troubleshooting the TWC.....69

Terminology

TWC - Timberwolf Conveyor

CC/REV - Centimeter Cube Per Revolution

DETENT - A catch in a machine that prevents motion until released

GPM - Gallons Per Minute

HP - Horsepower

MICRON - Measurement equivalent to one-millionth of a meter

PSI - Pounds Per Square Inch


RATED LOAD - The intended load amount for proper usage of the TWC

RPM - Revolutions Per Minute



- Important safety information symbol

Safe Operation of the TWC

 ALL TWC OPERATORS MUST READ AND COMPLETELY UNDERSTAND ALL SAFETY INFORMATION, HOW TO SAFELY OPERATE THE TWC, HOW TO ENSURE THE LONGEVITY OF THE TWC, HOW TO TRANSPORT THE TWC, AND HOW TO PROPERLY STORE THE TWC. FAILURE TO PROPERLY OPERATE AND MAINTAIN THE CONVEYOR CAN RESULT IN SERIOUS INJURY OR DEATH TO THE OPERATOR AND/OR BYSTANDERS. BE AWARE OF THE FOLLOWING HAZARDS:

CARBON MONOXIDE - When in use, the engine outputs carbon monoxide. NEVER operate the conveyor indoors and always work in a well-ventilated area.


CRUSH HAZARDS - Moving parts on the TWC can crush hands and fingers. Keep hands and loose articles of clothing clear from the conveyor, hydraulic lift, rollers, split logs, and roller plates WHILE THE CONVEYOR IS IN USE. NEVER stand beneath the conveyor while it is operating.

FALLING MATERIAL - NEVER stand underneath or near the drop-off end and/or the sides of the conveyor. Falling materials can cause serious injury or death. Note that when used at steep angles and/or in snow and ice, materials may slide off or down the conveyor.

FIRE HAZARDS - Keep a Class B fire extinguisher used for gasoline, grease, and oil fires nearby AT ALL TIMES.

Safe Operation of the TWC, cont.

GUARDS AND FASTENING - Ensure that all guards are attached and that there are no loose parts before operating. NEVER operate the machine without guards or with loose, missing, and/or altered parts.

 **HYDRAULIC FLUID HAZARDS** - High fluid pressures and temperatures WILL occur with this conveyor. Inspect the hydraulic system regularly for possible leaks and/or cracks in the hoses. NEVER check for leaks with your hand while the system is pressurized. High pressure hydraulic fluid can puncture skin and cause serious injury, including blood poisoning. Seek medical attention immediately if injured by escaping fluid.

PLACEMENT - Ensure the TWC is operated on level ground and that the unit cannot tip over or roll away. The ground skids should be in contact with flat ground while in operation. Failure to do so can result in a damaged machine, serious injury, or death.

SAFETY GLASSES - When the conveyor is in operation, wood chips, sawdust, and other small materials may be tossed into the air. Wear safety glasses AT ALL TIMES while operating the TWC.

SERVICING - When servicing the conveyor, always do so from a solid surface on the ground with the machine OFF. The TWC is designed to be lowered for servicing. NEVER climb on the machine or ride the belt.

General TWC Overview

1 - ADJUSTABLE
BELT LENGTH

2 - BELT
TRACKING
ADJUSTMENT

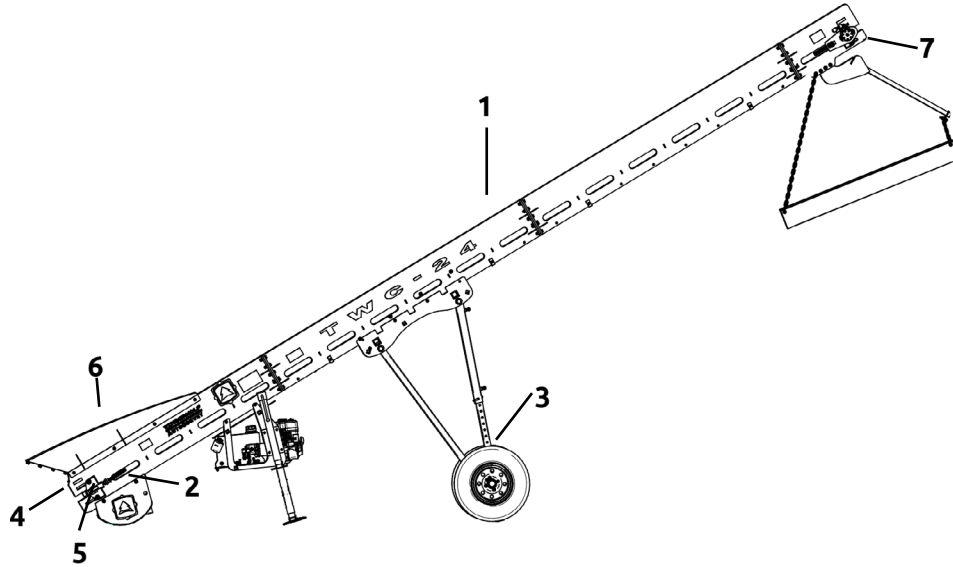
3 - AXLE

4 - RUBBER BELT
FINES
DEFLECTOR

5 - GREASABLE
BEARINGS

6 - HOPPER

7 - TAPERED
ROLLERS

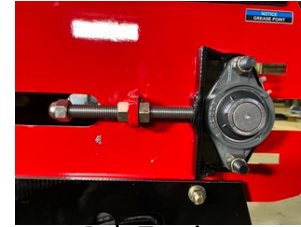


General TWC Overview, cont.

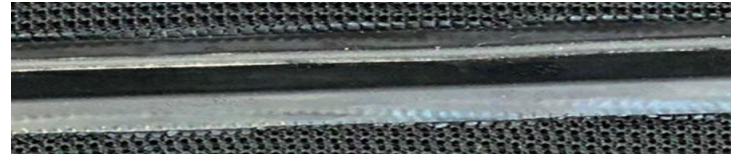
(1) **ADJUSTABLE BELT LENGTH** - The TWC belt is designed with 6" of adjustment length for enhanced endurance. If the belt breaks, contact a service technician from your dealer of purchase, or contact Timberwolf Firewood Processing Equipment.

(2) **BELT TRACKING ADJUSTMENT** - Each side of the conveyor can be independently adjusted to facilitate belt tracking. The top plates can be altered slightly, making them more useful for tracking, while the bottom plates can be adjusted more, making them useful for tension changes. If the belt is walking to one side of the conveyor, lengthen the side it is walking toward until the belt is tracking properly.

BELT OPTIONS - Paddle belts and rough top belts can be used with the TWC. The paddles are roughly 1.5" tall and cover the full width of the belt. Both belt options are available for purchase from a Certified Dealer or Timberwolf Firewood Processing Equipment.



Belt Tensioner



Paddle Belt



Rough Top Belt

General TWC Overview, cont.

(3) **AXLE** - The fixed beam toward the center of the conveyor with bearings at its ends on which the wheels revolve.



(4) **RUBBER BELT FINES DEFLECTOR** - Located at the bottom of the hopper, the rubber belt fines deflector is a small rubber belt that prevents debris from falling into the roller. This feature will extend the life of the belt and help ensure proper belt alignment.



(5) **GREASABLE BEARINGS** - All bearings on the conveyor are designed to be greased with a standard grease gun. **DO NOT** over grease the bearings. You should **NOT** see grease coming out of the seal on the bearing.

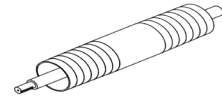


General TWC Overview, cont.

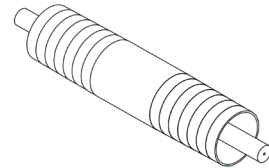
(6) **HOPPER** - Located at the bottom of the machine, the hopper is where material is loaded onto the conveyor.



(7) **TAPERED ROLLERS** - Tapered rollers allow the belt to self-center if it is mostly aligned.



Drive Roller

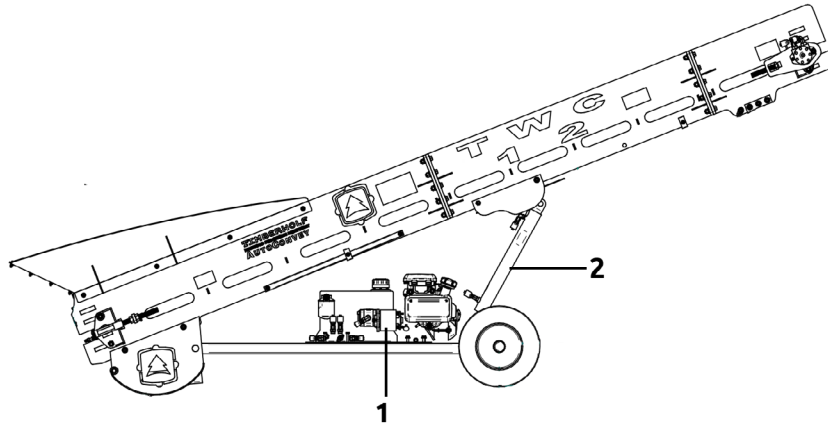


Idler Roller

TWC-12 Overview

1 - POWER PACK

2 - TELESCOPIC
CYLINDER



TWC-12 Overview, cont.

(1) **POWER PACK**- Located near the axle on the TWC-12, this area contains the engine with pull-start, hydraulic pump, hydraulic tank, and control valve. The Power Pack is secured onto the Power Pack Frame.



(2) **TELESCOPIC CYLINDER** - A cylinder coupled with a tandem center spool valve, allowing for adjustable operational and towing angles and heights.

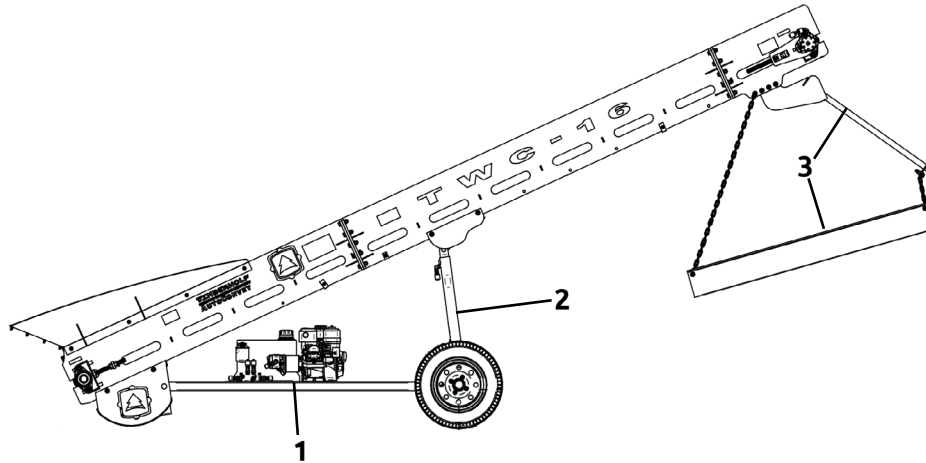


TWC-16 Overview

1 - POWER PACK

2 - TELESCOPIC
CYLINDER

3 - GRIZZLY BARS
WITH FINES
SEPARATOR



TWC-16 Overview, cont.

(1) **POWER PACK**- Located beneath the hopper on the TWC-16, this area contains the engine with pull-start, hydraulic pump, hydraulic tank, and control valve. The Power Pack is secured onto the Power Pack Frame.



(2) **TELESCOPIC CYLINDER** - A cylinder coupled with a tandem center spool valve, allowing for adjustable operational and towing angles and heights.



(3) **GRIZZLY BARS WITH FINES SEPARATOR (OPTIONAL ADD-ON COMPONENT)** - When attached, fine material can fall through, but coarse firewood will not, resulting in a cleaner pile of firewood. This component is attachable to the TWC-16, TWC-24, and TWC-32.



TWC-24 Overview

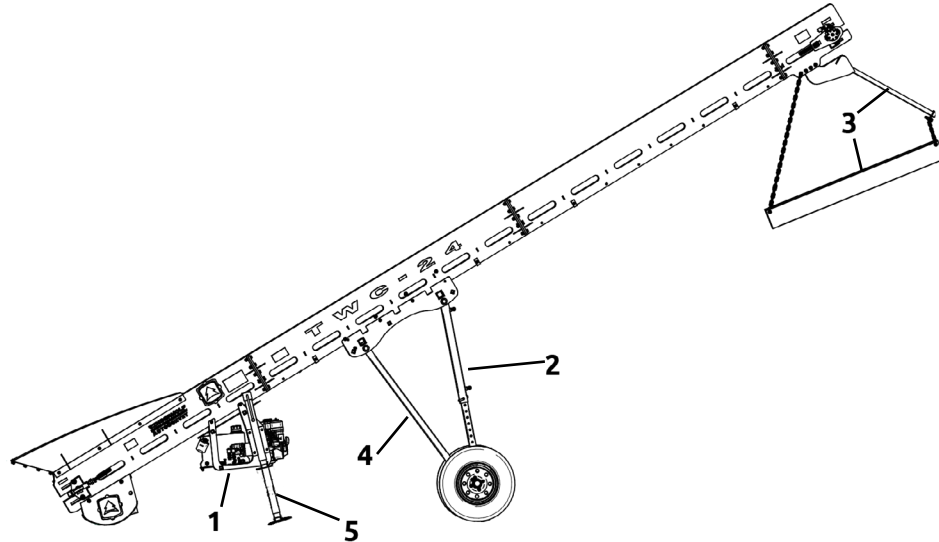
1 - POWER PACK

2 - TELESCOPIC
CYLINDER

3 - GRIZZLY BARS
WITH FINES
SEPARATOR

4 - UPRIGHT BOLT
ON

5 - JACK



TWC-24 Overview, cont.

(1) **POWER PACK**- Located in a suspended carriage near the hopper-end of the TWC-24, this area contains the engine with pull-start, hydraulic pump, hydraulic tank, and control valve. The Power Pack is secured onto the Power Pack Frame.



(2) **TELESCOPIC CYLINDER** - A cylinder coupled with a tandem center spool valve, allowing for adjustable operational and towing angles and heights.



TWC-24 Overview, cont.

(3) GRIZZLY BARS WITH FINES SEPARATOR (OPTIONAL ADD-ON COMPONENT) - When attached, fine material can fall through, but coarse firewood will not, resulting in a cleaner pile of firewood. This component is only attachable to the TWC-16, TWC-24, and TWC-32.



(4) UPRIGHT BOLT ON - Used on the TWC-24 and TWC-32, the upright bolt on frame provides additional stability when raising or lowering the conveyor, as well as when transporting the conveyor.



TWC-24 Overview, cont.

(5) JACK - Used on the TWC-24 and TWC-32, the jack supports these larger models with an additional point of contact to the ground, aiding the overall stability of the conveyor.



TWC-32 Overview

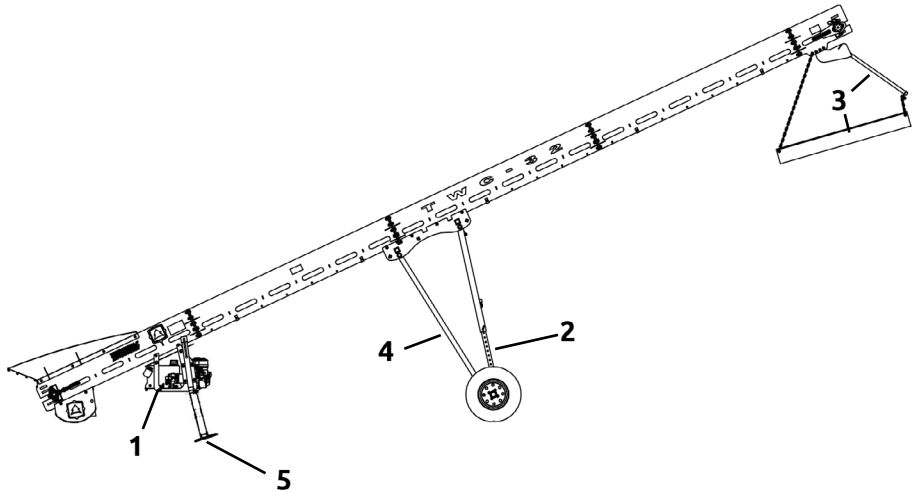
1 - POWER PACK

2 - TELESCOPIC
CYLINDER

3 - GRIZZLY BARS
WITH FINES
SEPARATOR

4 - UPRIGHT BOLT
ON

5 - JACK



TWC-32 Overview, cont.

(1) **POWER PACK**- Located in a suspended carriage near the hopper-end of the TWC-32, this area contains the engine with pull-start, hydraulic pump, hydraulic tank, and control valve. The Power Pack is secured onto the Power Pack Frame.



(2) **TELESCOPIC CYLINDER** - A cylinder coupled with a tandem center spool valve, allowing for adjustable operational and towing angles and heights.



TWC-32 Overview, cont.

(3) GRIZZLY BARS WITH FINES SEPARATOR (OPTIONAL ADD-ON COMPONENT) - When attached, fine material can fall through, but coarse firewood will not, resulting in a cleaner pile of firewood. This component is only attachable to the TWC-16, TWC-24, and TWC-32.

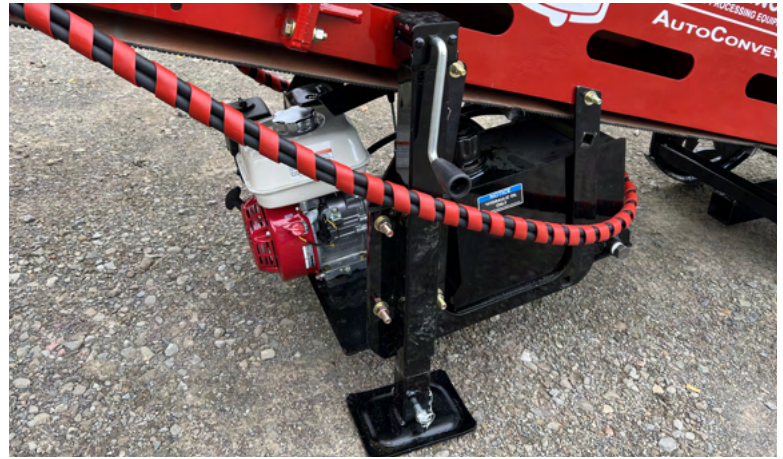


(4) UPRIGHT BOLT ON - Used on the TWC-24 and TWC-32, the upright bolt on frame provides additional stability when raising or lowering the conveyor, as well as when transporting the conveyor.



TWC-32 Overview, cont.

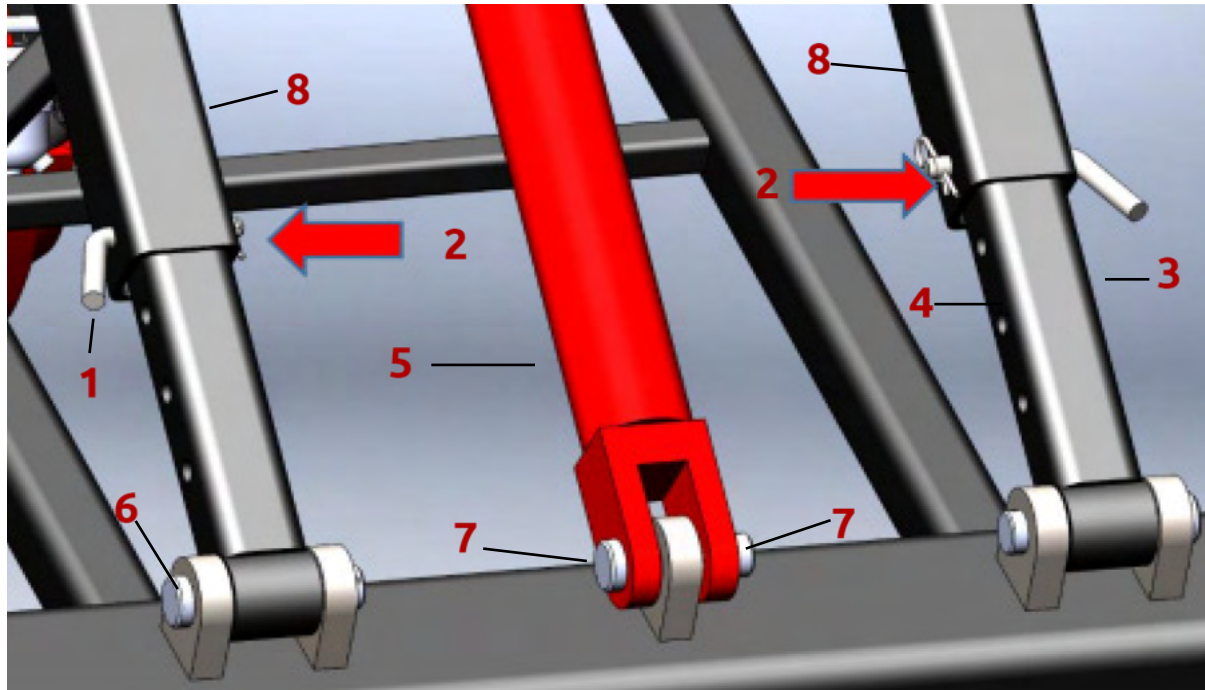
(5) JACK - Used on the TWC-24 and TWC-32, the jack supports these larger models with an additional point of contact to the ground, aiding the overall stability of the conveyor.



TWC-24 and TWC-32 Telescopic Axle Components

When the TWC is in operation, make sure the telescopic axle components are locked. To lock the components, insert one pull pin each into the telescopic arms on either side, and secure them using reusable cotter pins (see image below). Pull pins must be inserted through the holes of BOTH the outer and inner tubes. The angle/height of the conveyor can be changed by removing the pull pins and using the control valve to adjust the height. Pull pins should always be put back in place and secured with cotter pins after the desired angle/height is set. The 1" pins and hair pins should ALWAYS be secured and NEVER removed.

- 1 - PULL PIN
- 2 - COTTER PIN
- 3 - OUTER TUBE
- 4 - INNER TUBE
- 5 - CYLINDER
- 6 - 1" PIN
- 7 - HAIR PIN
- 8 - TELESCOPIC ARM



TWC Specifications

BELT - 20" wide with the option of a paddle belt or rough top belt

ENGINE - 4.8 HP Engine (see manual)

MOTOR OIL - 5W-30 motor oil is recommended

FILTRATION - The TWC uses a 10-micron screw-on cartridge for filtration

FUEL - Non-ethanol, 87 octane or higher gasoline is recommended

GREASE - The bearings may be greased with multi-purpose grease or a similar grease, using a standard grease gun (DO NOT over grease the bearings)

HOSES - All pressure hoses and tubing can operate with pressures up to 3,000 PSI

HYDRAULIC FLUID - The TWC takes AW-46 hydraulic fluid or a similar hydraulic fluid

HYDRAULIC MOTOR - 125 cc/rev Hydraulic Motor (see manual)

HYDRAULIC PUMP - Hydraulic Gear Pump AP-10-2.7 (1.25 GPM at 1,800 RPM) (see manual)

VALVES - The TWC uses a 2-spool valve; one spool uses a detent mechanism (this spool runs the belt) and the other operates as a spring center (this spool controls the lift)

TWC Specifications, cont.

TWC-12 - This compact model is designed for home use

- 5'3" travel height
- 8' max operating height
- 1'10" frame width
- 12' frame length
- 1,055 lbs

TWC-16 - This model is ideal for large firewood operations, storing piles of seasoned wood, or loading walking floor trailers

- 7' travel height
- 10' max operating height
- 1'10" frame width
- 16' frame length
- 1,200 lbs

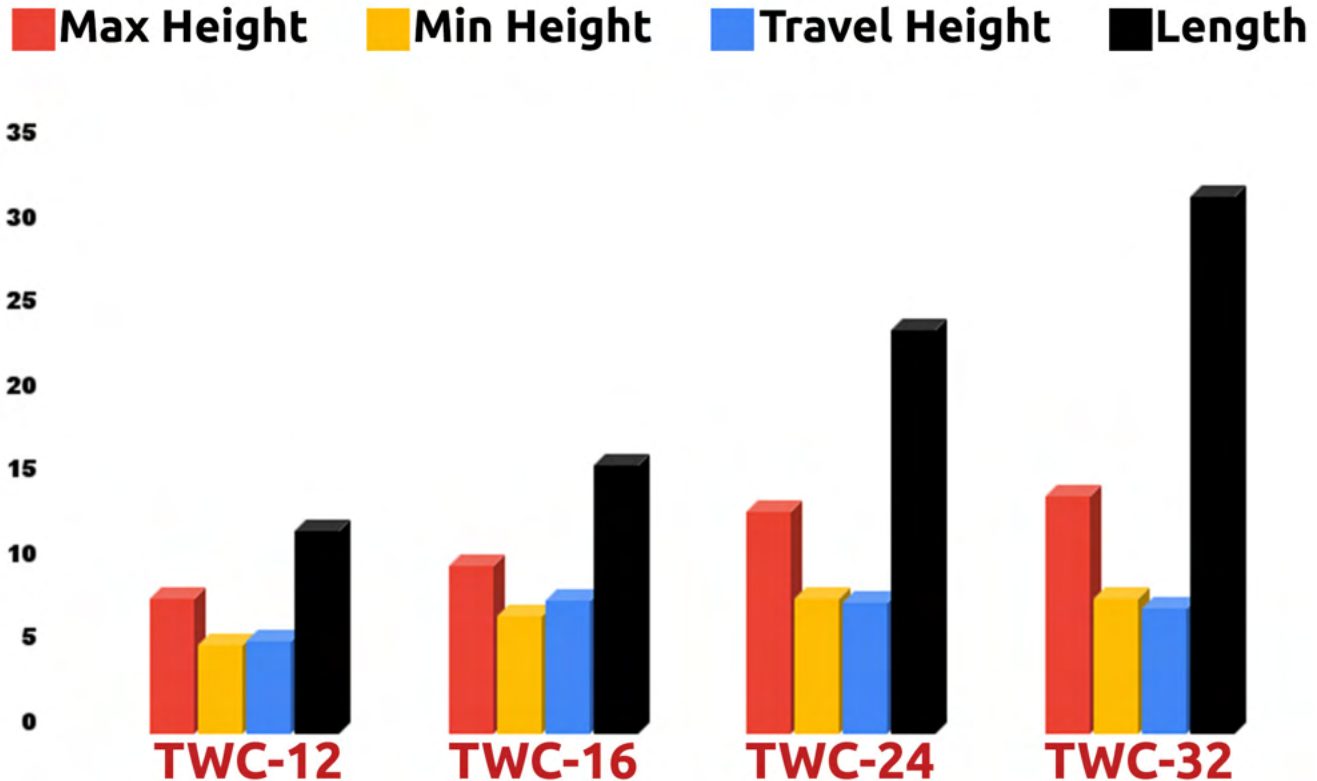
TWC-24 - The second largest TWC model is designed for larger personal or commercial operations

- 8' travel height
- 13'2" max operating height
- 1'10" frame width
- 24' frame length
- 1,730 lbs

TWC-32 - The largest TWC model is ideal for large commercial projects


- 8' travel height
- 14'1" max operating height
- 1'10" frame width
- 32' frame length
- 2,040 lbs

TWC Specifications, cont.



Ensuring the Longevity of the TWC

INTENDED USE - The TWC is designed to move firewood, wood chips, mulch, and sawdust. The maximum rated load is 15 lbs. per foot. TWCs are not designed for the transportation of soil, sand, gravel or other high density material; these materials will exceed the maximum rated load.

 **LOADING** - NEVER allow extreme loading at the raised end of the conveyor. Applying large loads to the raised end of the conveyor can cause the conveyor to tip. This can cause damage to the machine, serious injury, or death.


UPON RECEIPT OF YOUR TWC -

1. Locate the metallic plate on the machine that has the serial number
2. Inspect for any loose/damaged components that may have occurred during shipping
 - If there are loose components, fasten them securely prior to use
 - If any components are damaged, contact your dealer of purchase and send images of the damaged parts to sales@timberwolfequip.com
3. Check fluid levels
 - If the motor oil is low, add more 5W-30 motor oil
 - After the first 5 hours of use, change the motor oil
 - If the hydraulic fluid is low, add AW-46 hydraulic fluid or a similar hydraulic fluid

If upon receipt your TWC has any issues, contact the dealer from where you purchased your machine, or contact Timberwolf Firewood Processing Equipment at (607) 307-4029 for service.

Ensuring the Longevity of the TWC, cont.

DAILY MAINTENANCE -

- Check the rollers for sawdust build up, failure to do so may result in damage to the belt
- Visually inspect all hydraulic fittings and hoses
- Ensure all nuts, bolts, and fittings are tightened
-  • DO NOT place body parts in/near the area of a suspected hydraulic leak while the unit is under pressure (high pressure hydraulic fluid leaks can cause serious injury or death)
- If the hoses are damaged, SHUT THE MACHINE OFF IMMEDIATELY and contact the certified Timberwolf Firewood Processing Equipment dealer from where you purchased your TWC, or call Timberwolf Firewood Processing Equipment at (607) 307-4029
- If the hoses are leaking around the connections, turn the machine OFF, then tighten the fittings

Ensuring the Longevity of the TWC, cont.

WEEKLY MAINTENANCE -

- Grease all fittings with multi-purpose grease
- Inspect the belt and belt tensioner to ensure proper tension
- The belt tension should be just enough to move the load on the conveyor (excessive tension will cause greater stress on the belt, hydraulic motor, and bearings, which will result in a shorter than anticipated lifespan)
- If the belt is not properly tensioned, adjust the tapered rollers until the desired tension is achieved
- Belt tension recommendation: 3-4" of belt sag on the underside of the conveyor



Belt Tensioner



Proper amount of belt sag

Ensuring the Longevity of the TWC, cont.

MONTHLY MAINTENANCE -

- Replace motor oil (see manual)

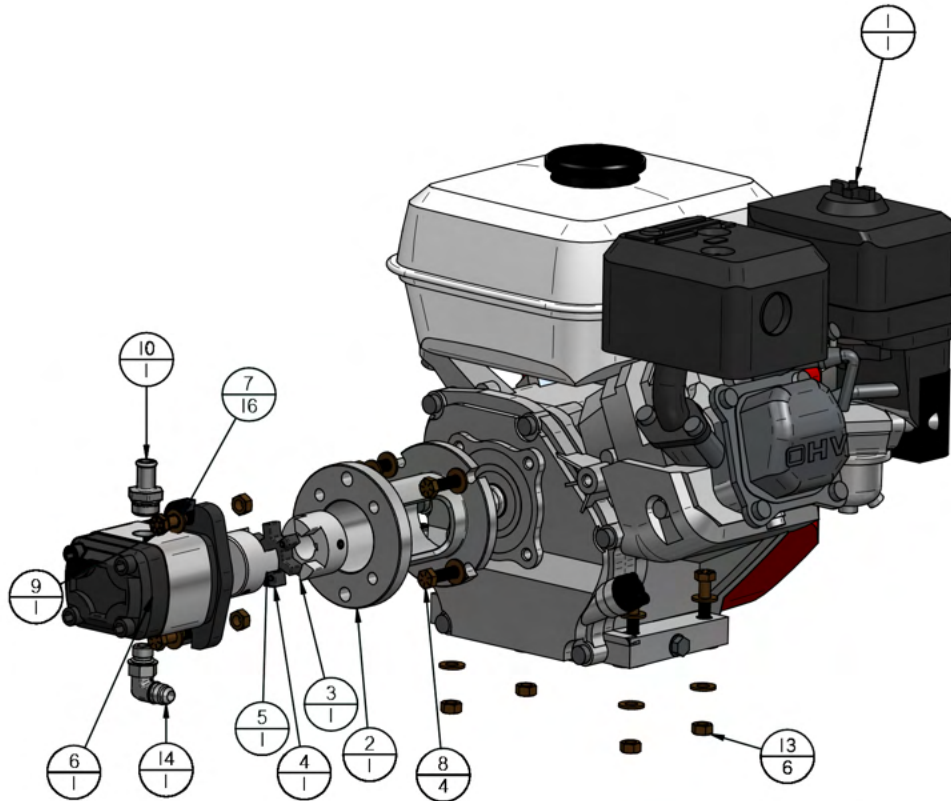
YEARLY MAINTENANCE -

- Replace hydraulic filter after every 250-hour period of use or twice per year
- Change the motor oil after each 250-hour period of use (see manual)
- Replace hydraulic fluid after 500 hours of use or a year - whichever comes first
- Repack axle bearings with multi-purpose grease

Assembly and Repair

With normal use of the TWC, replacement parts and repairs may be needed. Reference the “Assembly and Repair” section for parts, part quantities, and assembly instructions.

TWC ENGINE

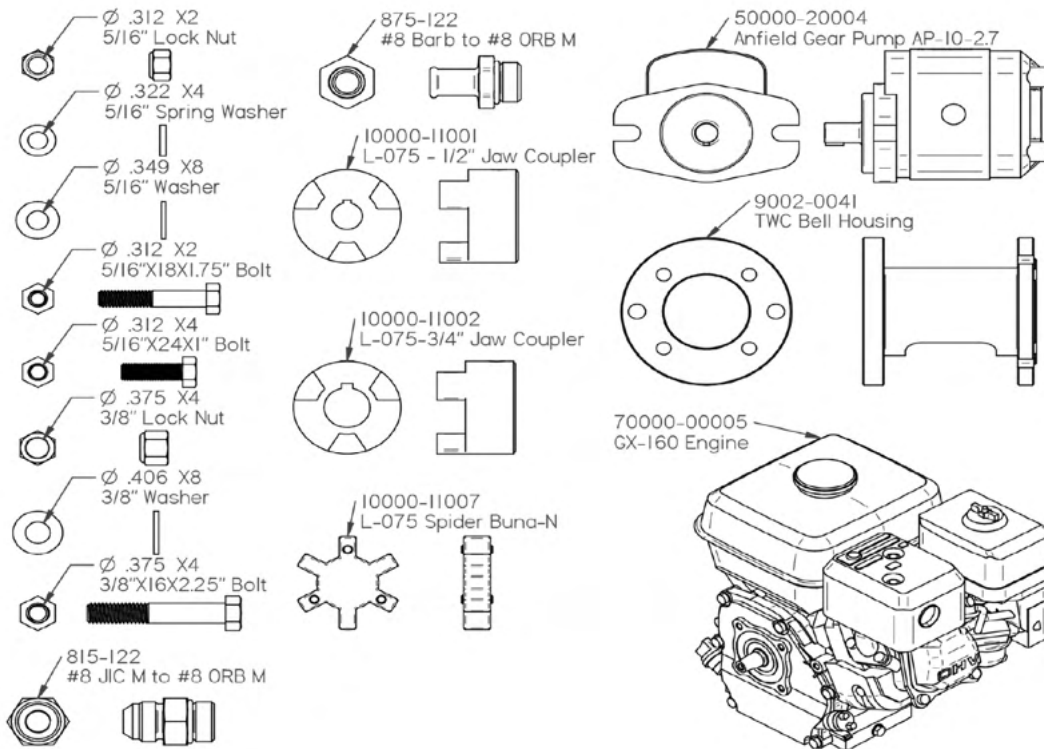


 = Purchasable From Timberwolf
Firewood Processing Equipment

Item No	Part No	Part Name	Qty
1	70000-00005	GX-160	1
2	9002-0041	TWC Bell Housing	1
3	10000-11002	L-075 - 3/4" Jaw Coupler	1
4	10000-11007	L-075 Spider - Buna-N	1
5	10000-11001	L-075 - 1/2" Jaw Coupler	1
6	50000-20004	Anfield AP-10-2.7 GPM Pump	1
7	.3125 Washer	5/16" Washer	16
8	.3125x24 1 Bolt	3/25x24 1 Bolt	4
9	.3125x18 1.75 Bolt	3/25x18 1.75 Bolt	2
10	875-122	#8 Barb to #8 ORB M	1
11	.3125x18 1.5 Bolt	3/25x18 1.5 Bolt	4
12	815-211	#6 JIC M to #6 ORB M	1
13	.3125 Nut	5/16" Nut	6

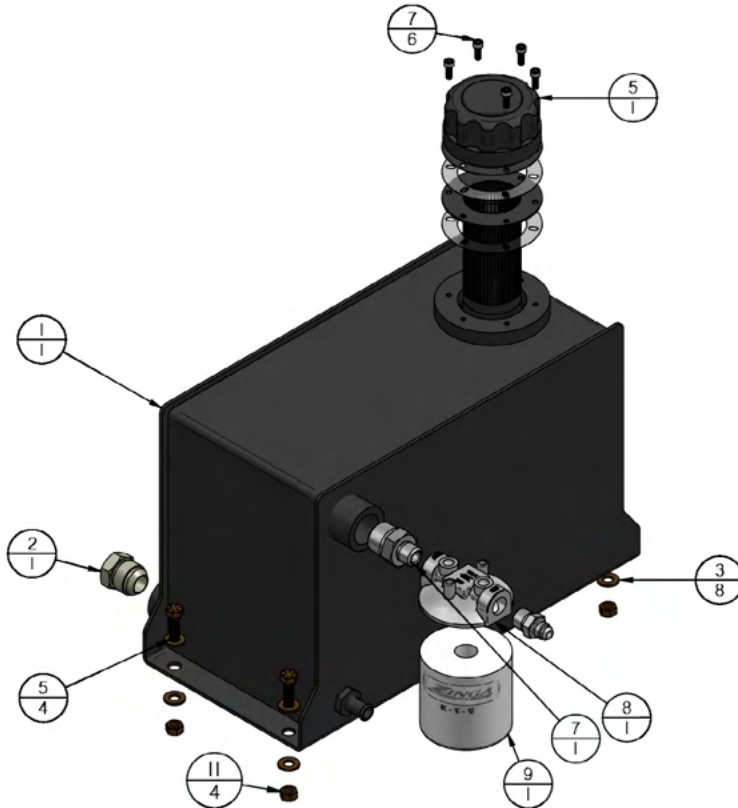
Assembly and Repair, cont.

TWC ENGINE



Assembly and Repair, cont.

TWC HYDRAULIC TANK AND FILTER

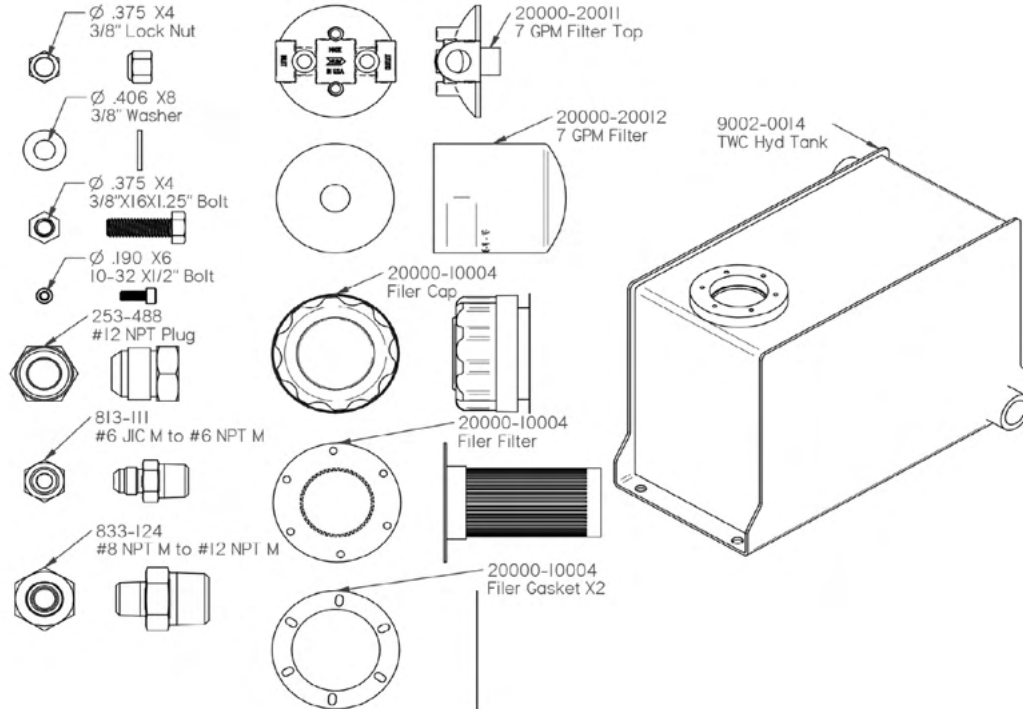


= Purchasable From Timberwolf
Firewood Processing Equipment

Item No	Part No	Part Name	Qty
1	9002-0014	Conveyor Hyd Tank	1
2	253-488	3/4" NPT Plug (#12)	1
3*	.3125 Washer	5/16" Washer	8
4*	.3125x18 I Bolt	.3125x18 I Bolt	4
5	20000-10004	Breather Filler	1
6*	10-32 x 0.5 Socked Head	10-32 x 0.5" Socked Head	6
7	833-114	#6 NPT M to #12 NPT M	1
8	20000-20011	7 GPM Filter Head	1
9	20000-20012	7 GPM Filter	1
10*	813-111	#6 JIC M to #6 NPT M	1
11	.3125 Nut	5/16" Nut	4

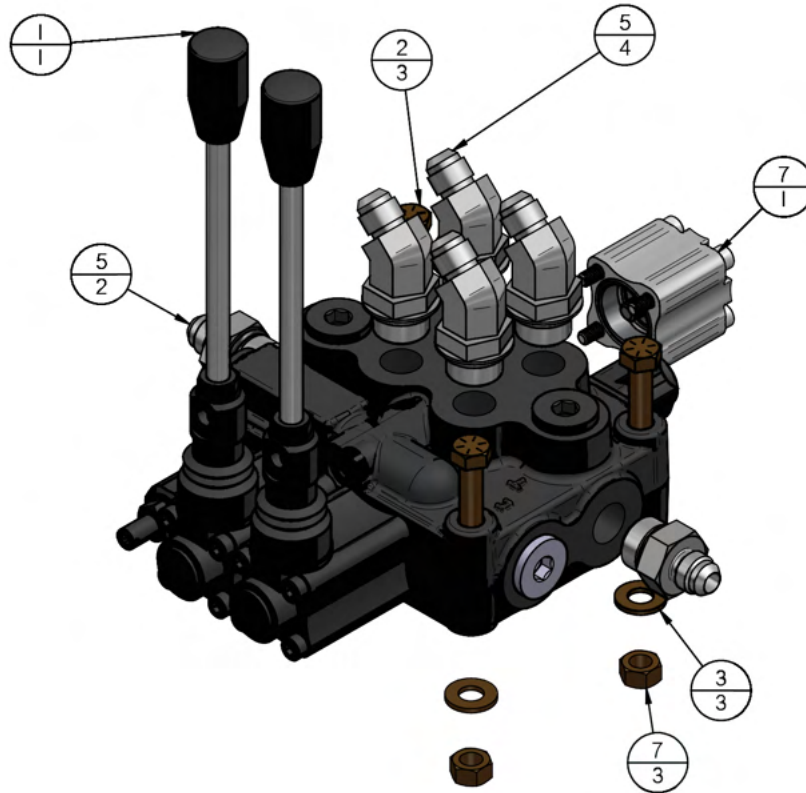
Assembly and Repair, cont.

TWC HYDRAULIC TANK AND FILTER



Assembly and Repair, cont.

TWC 2-SPOOL VALVE

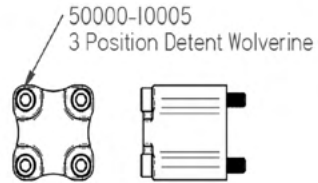
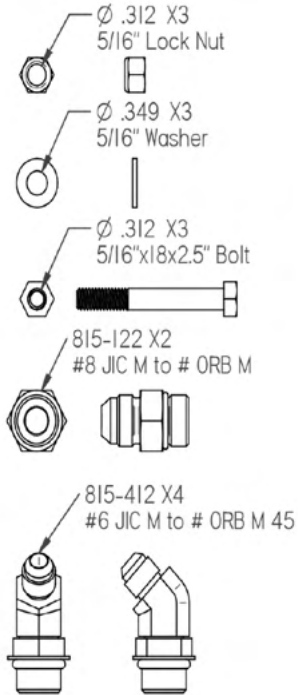


 = Purchasable From Timberwolf
Firewood Processing Equipment

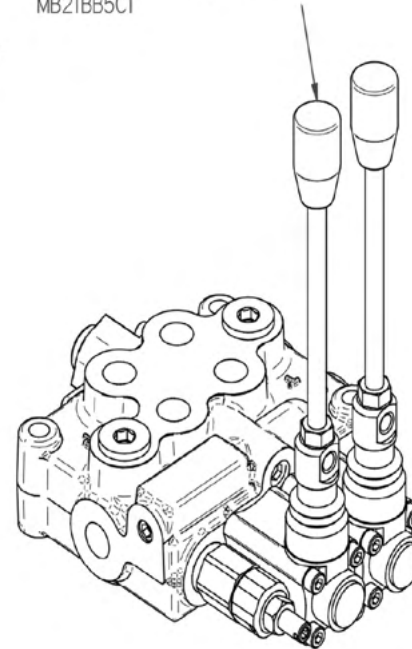
Item No	Part No	Part Name	Qty
1	50000-10004	MB 2 Spool Valve	1
2	.3125x18 2.5 Blot	.3125 - 18 - 2.5 BOLT	3
3	.3125 Washer	5/16" Washer	3
4	815-112	#6 JIC M to #8 ORB M	2
5	815-412	#6 JIC M to #8 ORB M 45	4
6	50000-10005	3 Position Detent	1
7	.3125 Nut	5/16" Nut	3

Assembly and Repair, cont.

TWC 2-SPOOL VALVE

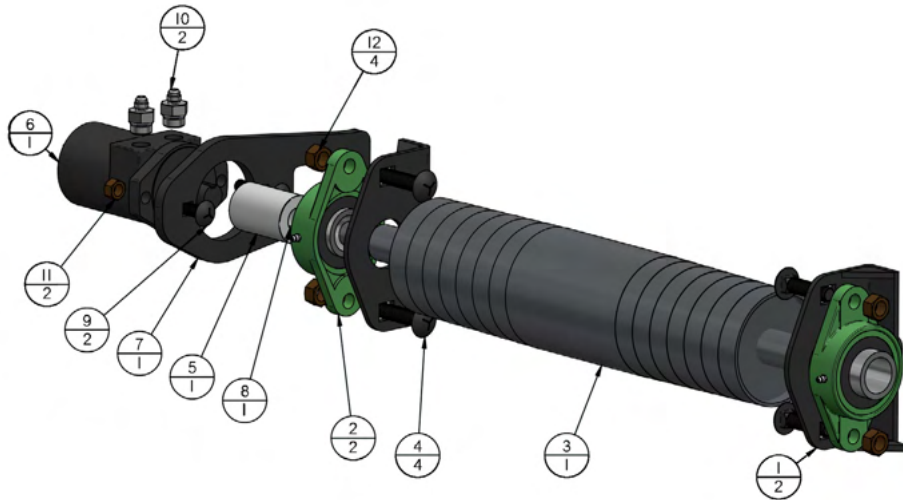


50000-10004
Wolverine MB 2 Spool Valve
MB21BB5C1



Assembly and Repair, cont.

TWC DRIVE ROLLER

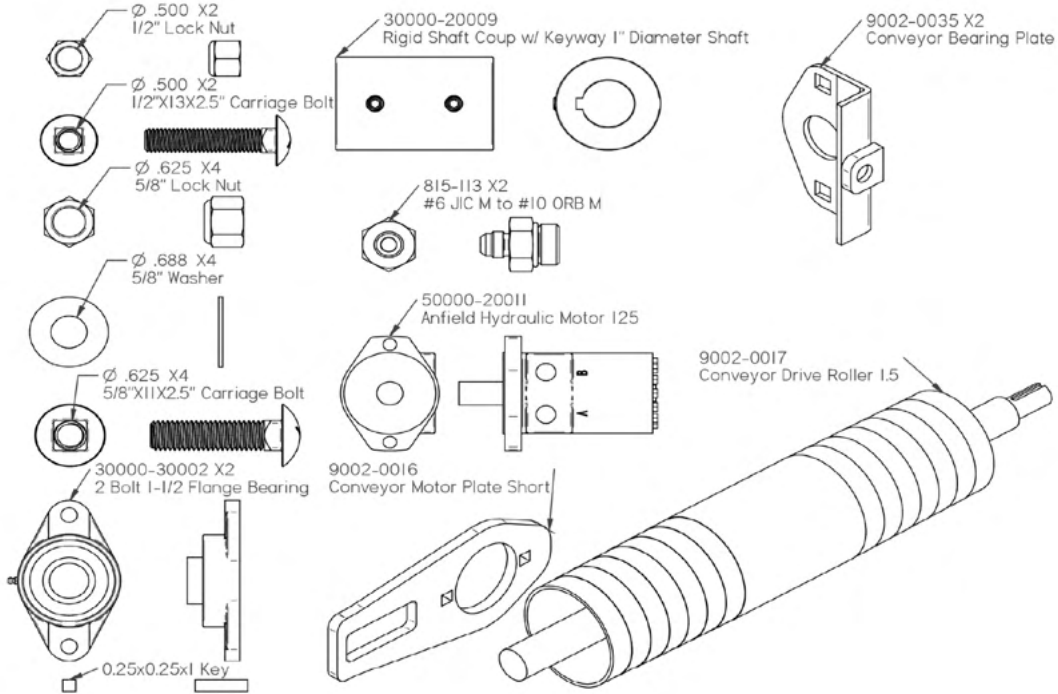


= Purchasable From Timberwolf
Firewood Processing Equipment

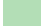
Item No	Part No	Part Name	Qty
1*	9002-0035	conveyor bearing plate	2
2	30000-30002	2 Bolt 1-1/2 Flange Bearing	2
3	9002-0017	Conveyor Drive Roller 1.5	1
4	625x11 2.5 Carriage Bolt	625x11 2.5 Carriage Bolt	4
5	30000-20009	Rigid Shaft Coup w/ Keyway 1"D	1
6	50000-20011	Anfield Hydraulic Motor 125	1
7	9002-0016	Conveyor Motor Plate Short	1
8	0.25x0.25x1 Key	0.25x0.25x1 Key	1
9	.5x13 2.5 Carriage Bolt	.5x13 2.5 Carriage Bolt	2
10	815-113	#6 JIC M to #10 ORB M	2
11*	.5 Nut	1/2" Nut	2
12*	625 Nut	5/8" Nut	4

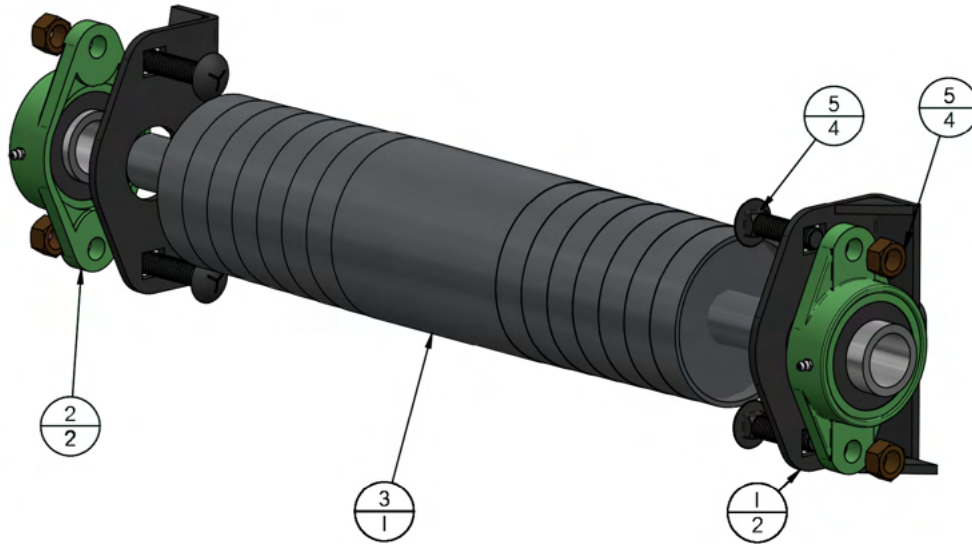
Assembly and Repair, cont.

TWC DRIVE ROLLER



TWC IDLER ROLLER

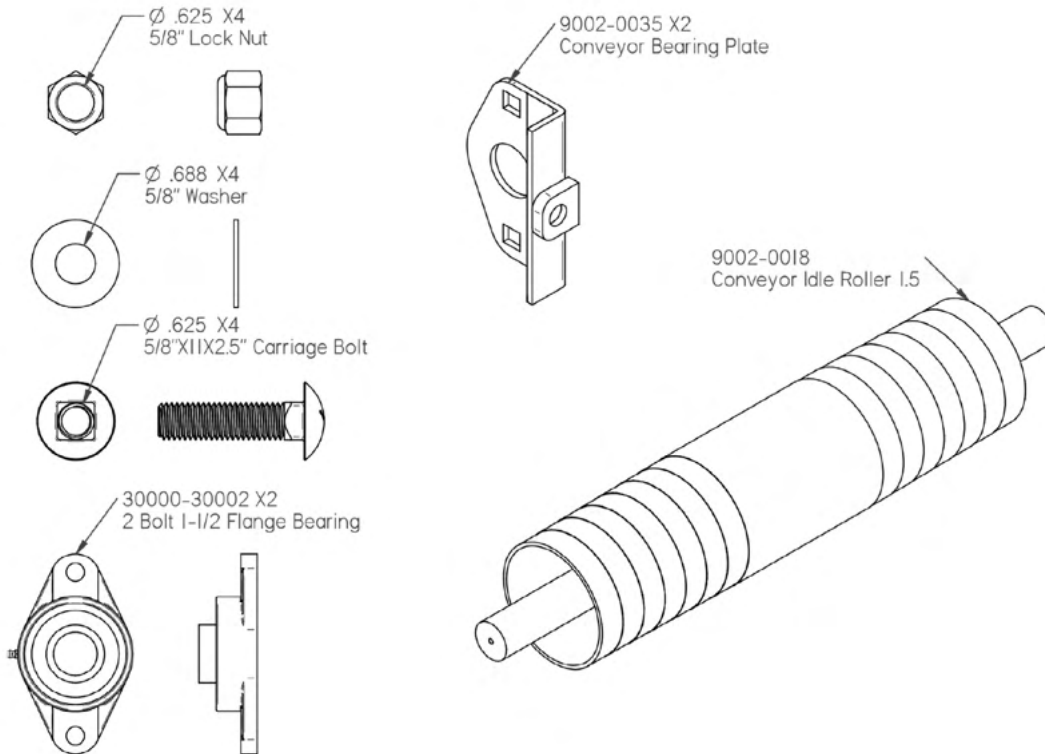
 = Purchasable From Timberwolf
Firewood Processing Equipment



Item No	Part No	Part Name	Qty
1	9002-0035	conveyor bearing plate	2
2	30000-30002	2 Bolt 1-1/2 Flange Bearing	2
3	9002-0018	Conveyor Idle Roller 1.5	1
4	.625x11 2.5 Carriage	.625x11 2.5 Carriage Bolt	4
5	.625 Nut	5/8" Nut	4


Assembly and Repair, cont.

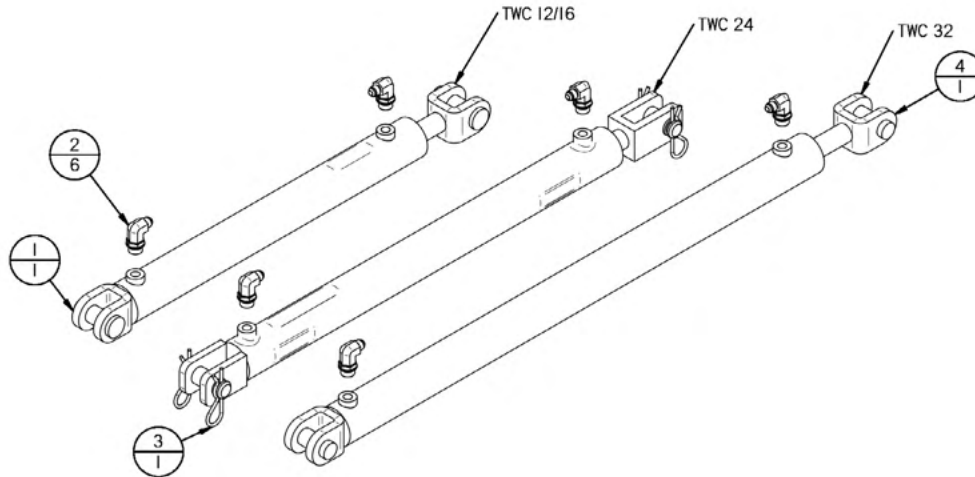
TWC IDLER ROLLER



Assembly and Repair, cont.

TWC HYDRAULIC CYLINDERS

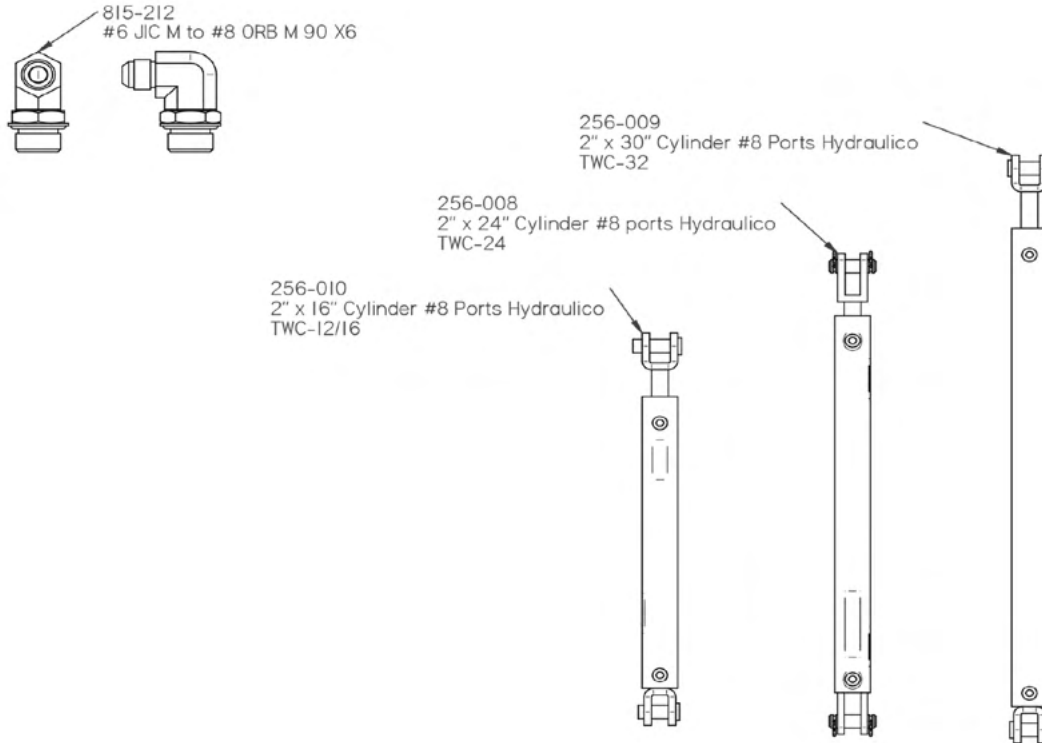
 = Purchasable From Timberwolf
Firewood Processing Equipment



Item No	Part No	Part Name	Qty
1	256-010	Conveyor Cylinder Small	1
2	815-212	#6 JIC M to #8 ORB M 90	6
3	256-008	2"x24" Cylinder #6 Ports	1
4	256-009	Hydraulic 2.5 X 30" Cylinder	1

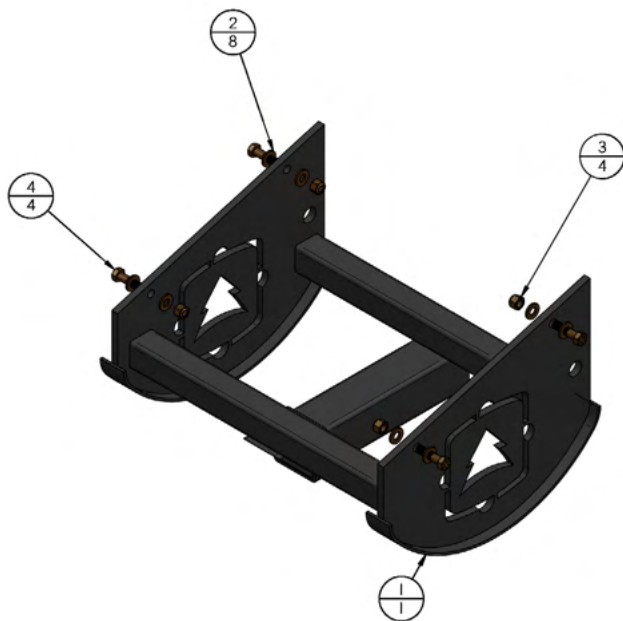
Assembly and Repair, cont.

TWC HYDRAULIC CYLINDERS



TWC HITCH

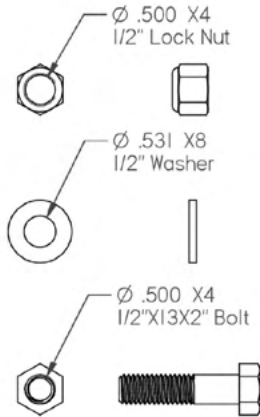
= Purchasable From Timberwolf
Firewood Processing Equipment



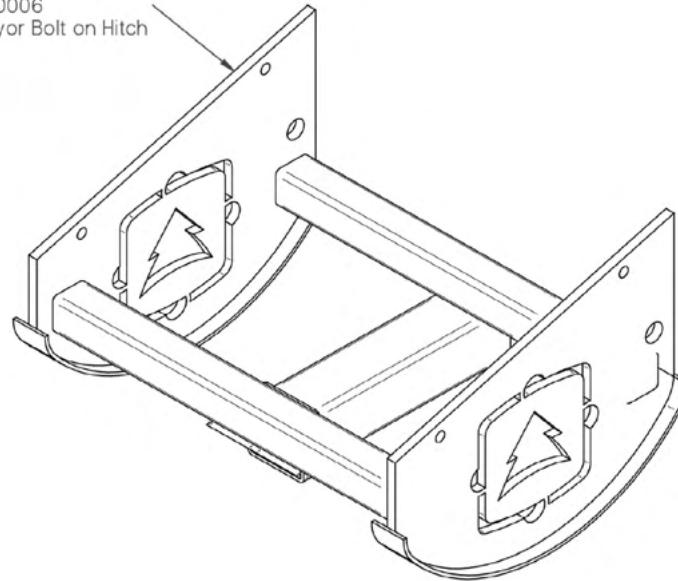
Item No	Part No	Part Name	Qty
1	9002-0006	TWC Hitch Bolt On	1
2	.5 Washer	1/2" Washer	8
3	.5x13 2 Bolt	1/2"x13 2 Bolt	4
4	.5 Nut	1/2" Nut	4

Assembly and Repair, cont.

TWC HITCH

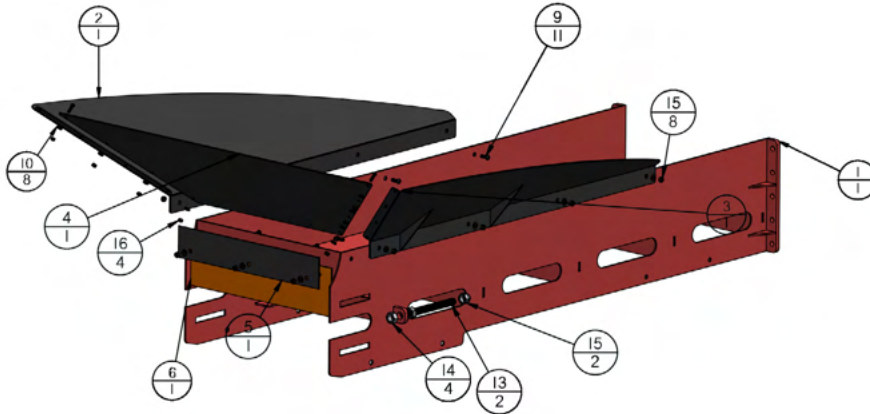


9002-0006
Conveyor Bolt on Hitch



Assembly and Repair, cont.

TWC LOWER

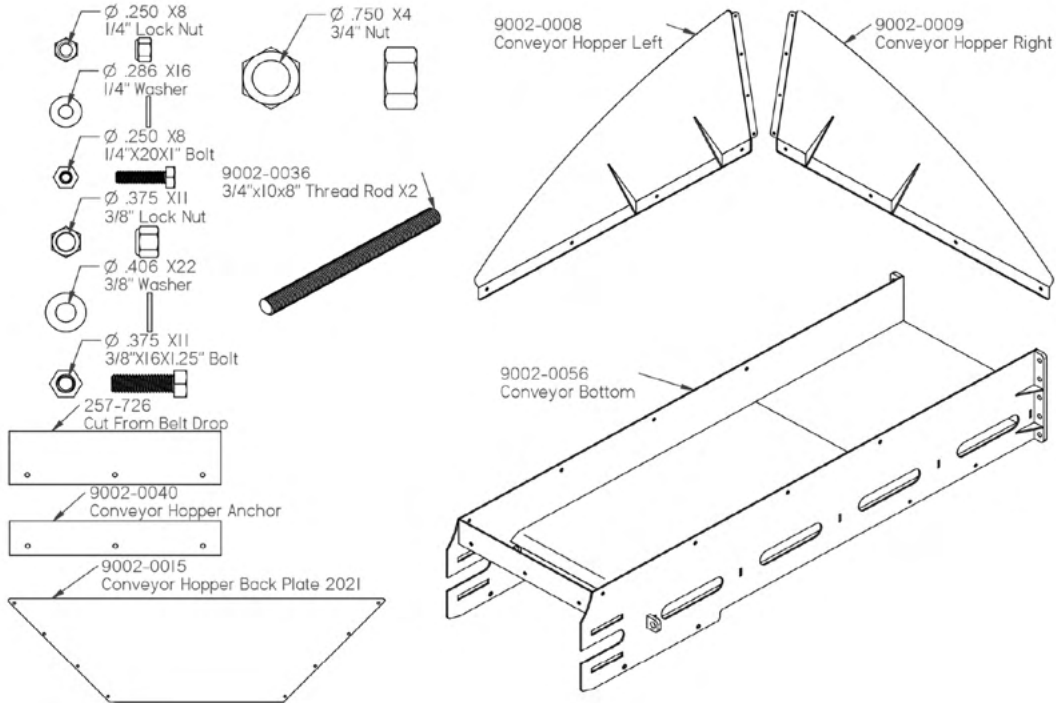


 = Purchasable From Timberwolf Firewood Processing Equipment

Item No	Part No	Part Name	Qty
1	9002-0056	Conveyor Bottom 6-6-22	1
2	9002-0008	Conveyor Hopper Left	1
3	9002-0009	Conveyor Hopper Right	1
4	9002-0015	Conveyor Hopper Back Plate 2021	1
5	9002-0040	Conveyor Hopper Anchor	1
6	257-726	Conveyor Hopper Anchor	1
7	.3125 Washer	5/16" Washer	11
8	.3125 Lock Nut	5/16" Lock Nut	3
9	.3125x18 I Button	5/16"x18 I" Button Socket Head	11
10	.25 Washer	1/4" Flat Washer	8
11	.25x20 I Button	.25x20 I Button Socket Head Bolt	8
12	9002-0036	8 x 1/2x10 threaded rod	2
13	.75 Nut	3/4" Nut	4
14	.75 Cap Nut	3/4" Cap Nut	2
15	.3125 Nut	5/16" Nut	8
16	.25 Nut	.25 Nut	8

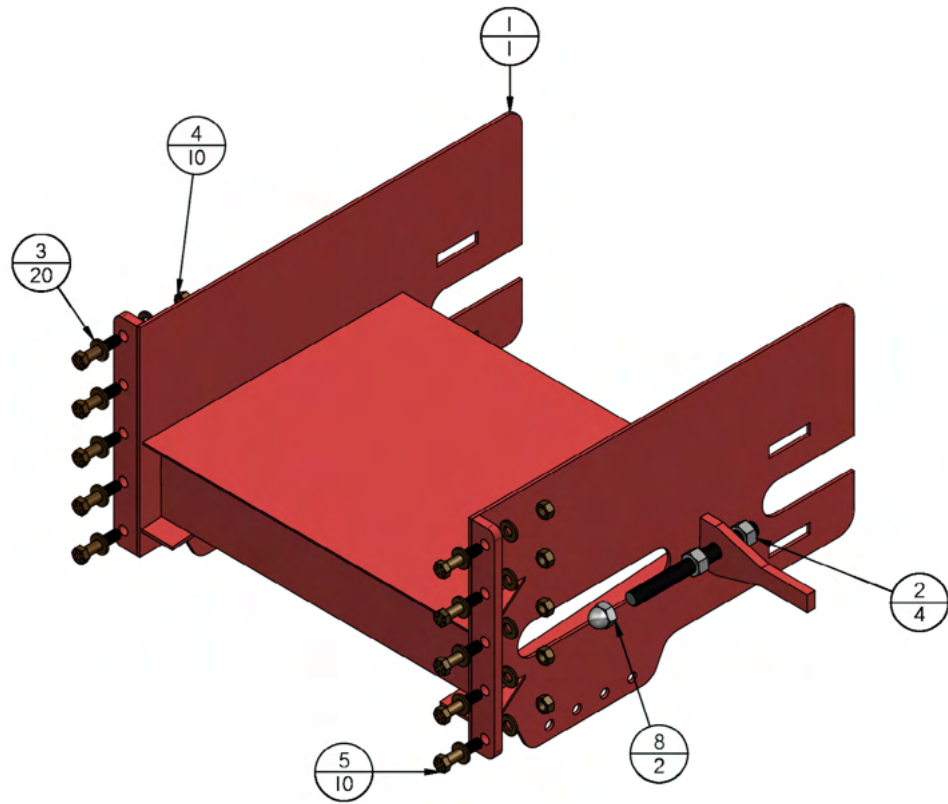
Assembly and Repair, cont.

TWC LOWER



Assembly and Repair, cont.

TWC UPPER

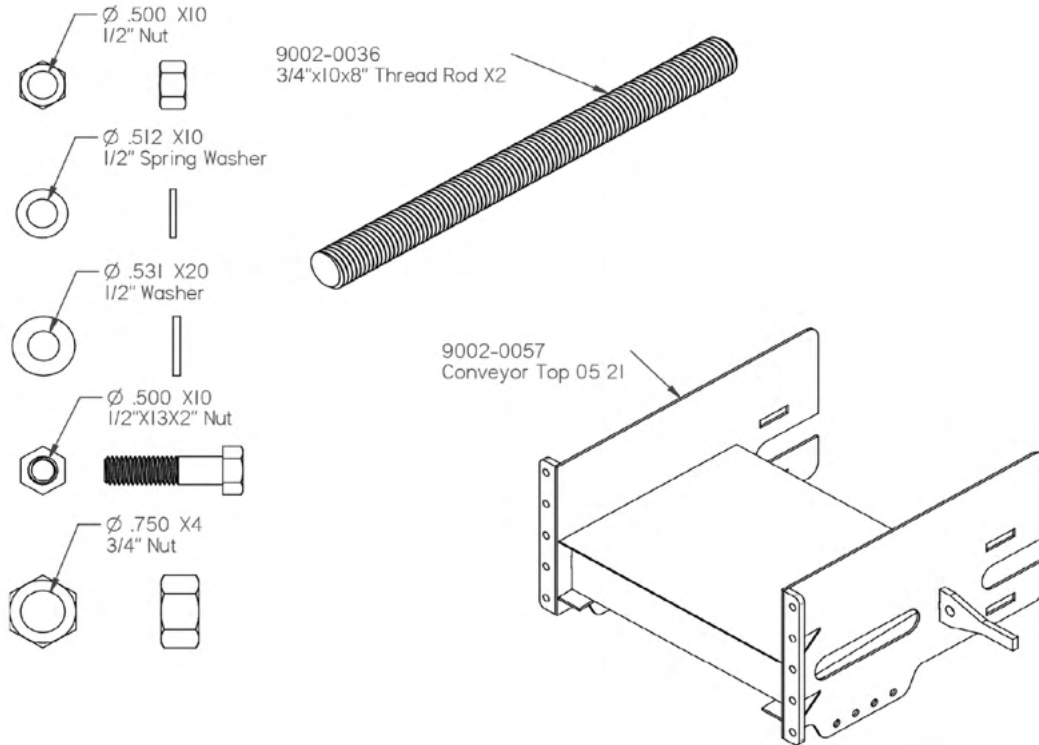


 = Purchasable From Timberwolf Firewood Processing Equipment

Item No	Part No	Part Name	Qty
1	9002-0057	Conveyor Top 6-6-22	1
2	.75 Nut	3/4" Nut	4
3	.5 Washer	1/2" Washer	20
4	.5 Nut	1/2" Nut	10
5	.5x13 2.25 Bolt	1/2"x13 2.25 Bolt	10
6	9002-0036	8 x 1/2x10 threaded rod	2
7	.75 Cap Nut	3/4" Cap Nut	2

Assembly and Repair, cont.

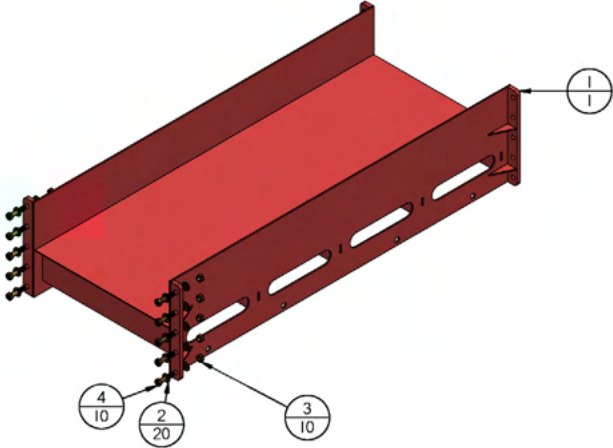
TWC UPPER



Assembly and Repair, cont.

TWC 4FT MIDDLE

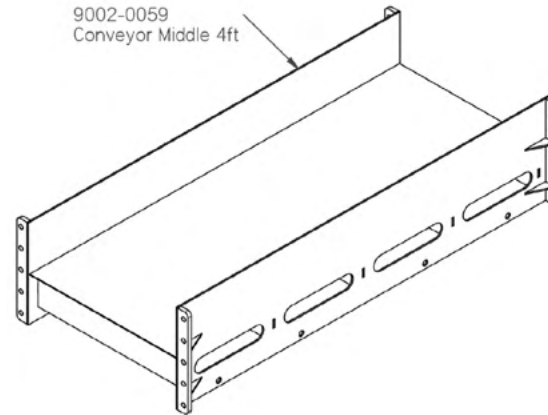
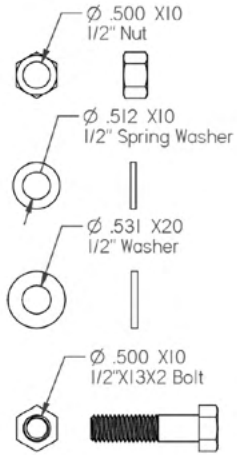
 = Purchasable From Timberwolf Firewood Processing Equipment



Item No	Part No	Part Name	Qty
1	9002-0059	Conveyor Middle 4ft	1
2	.5 Washer	1/2" Washer	20
3	.5 Nut	1/2" Nut	10
4	.5x13 2.25 Bolt	1/2"x13 2.25 Bolt	10


Assembly and Repair, cont.

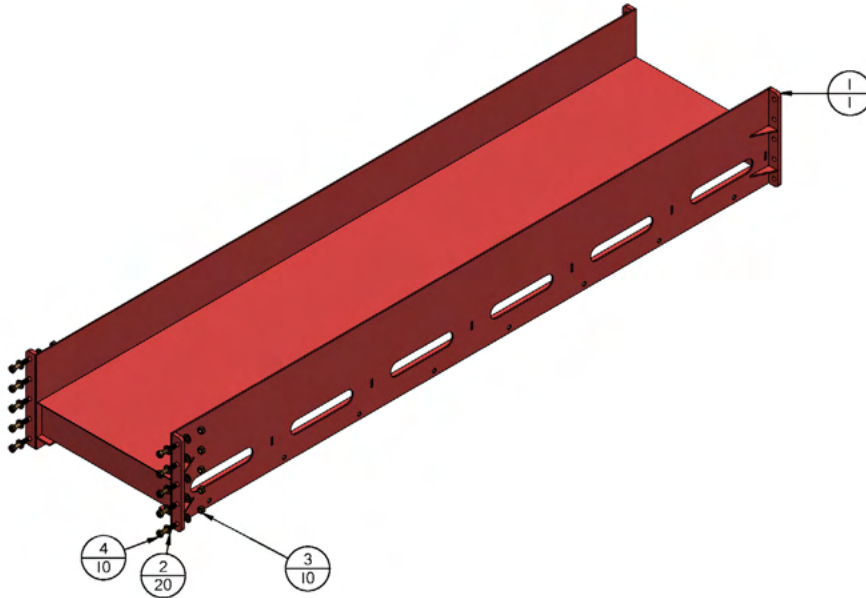
TWC 4FT MIDDLE



Assembly and Repair, cont.

TWC 8FT MIDDLE

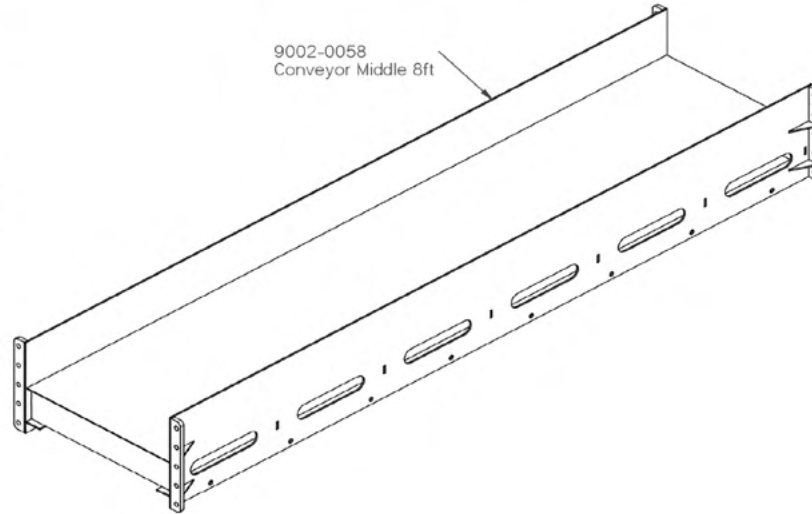
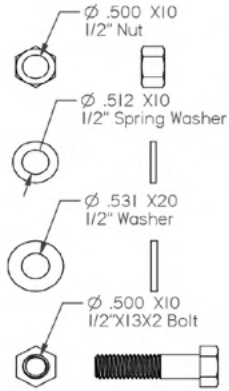
 = Purchasable From Timberwolf
Firewood Processing Equipment



Item No	Part No	Part Name	Qty
1	9002-0058	Conveyor Middle 8ft	1
2	.5 Washer	1/2" Washer	20
3	.5 Nut	1/2" Nut	10
4	.5x13 2.25 Bolt	1/2"x13 2.25 Bolt	10

Assembly and Repair, cont.

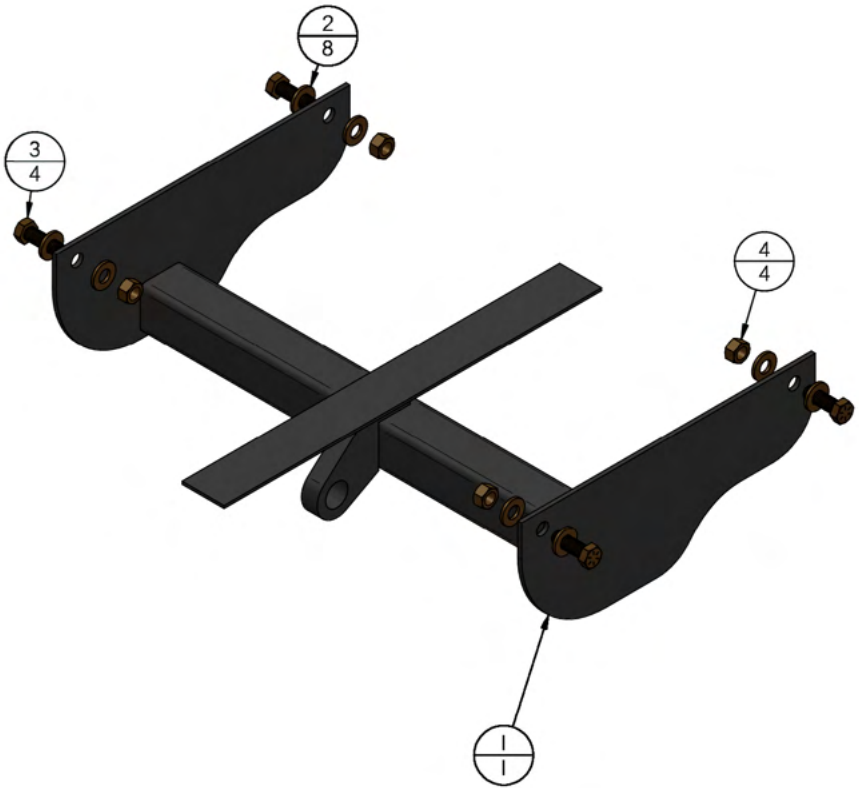
TWC 8FT MIDDLE



Assembly and Repair, cont.

TWC-12 AND TWC-16 PIVOT

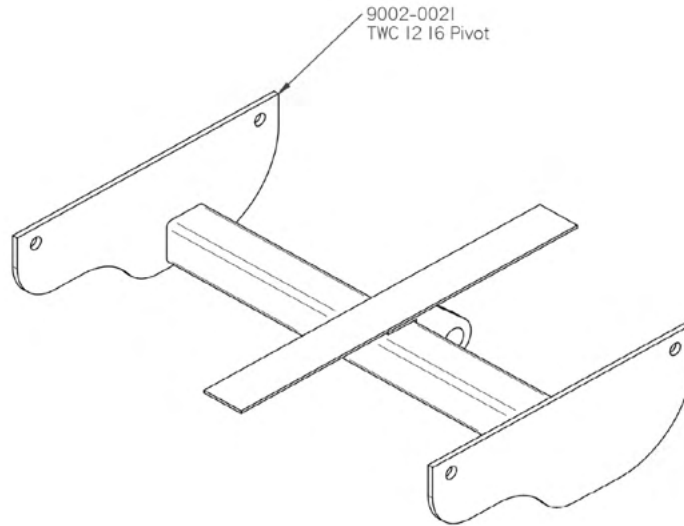
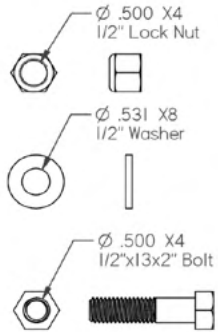
= Purchasable From Timberwolf Firewood Processing Equipment



Item No	Part No	Part Name	Qty
1	9002-0021	TWC 12 16 Pivot	1
2	.5 Washer	1/2" Washer	8
3	.5x13 1.5	5x13 1.5 Bolt	4
4*	.5 Nut	1/2" Nut	4

Assembly and Repair, cont.

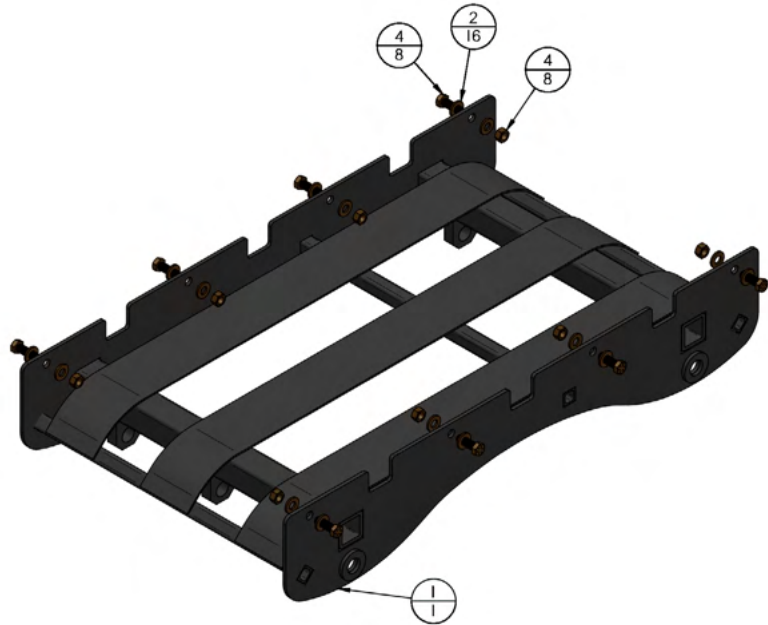
TWC-12 AND TWC-16 PIVOT



Assembly and Repair, cont.

TWC-24 AND TWC-32 BOLT ON FOOT MOUNT

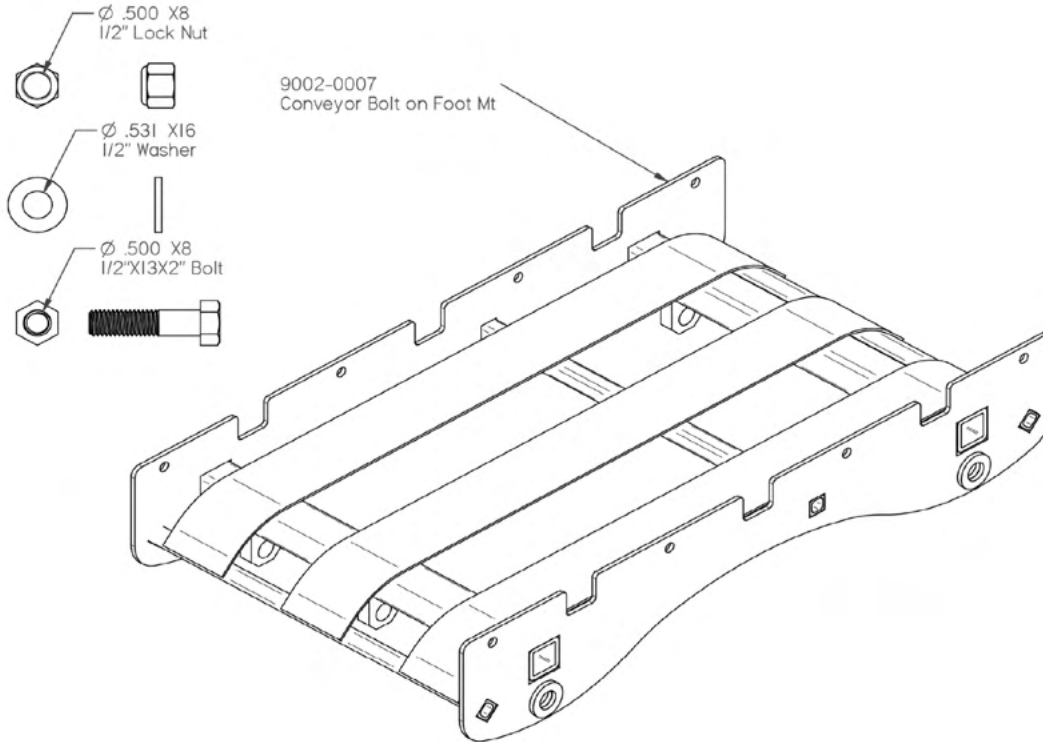
 = Purchasable From Timberwolf Firewood Processing Equipment



Item No	Part No	Part Name	Qty
1	9002-0007	Conveyor Foot Mount Bolt On	1
2	.5 Washer	1/2" Washer	16
3	.5x13 1.5	.5x13 1.5 Bolt	8
4	.5 Nut	1/2" Nut	8

Assembly and Repair, cont.

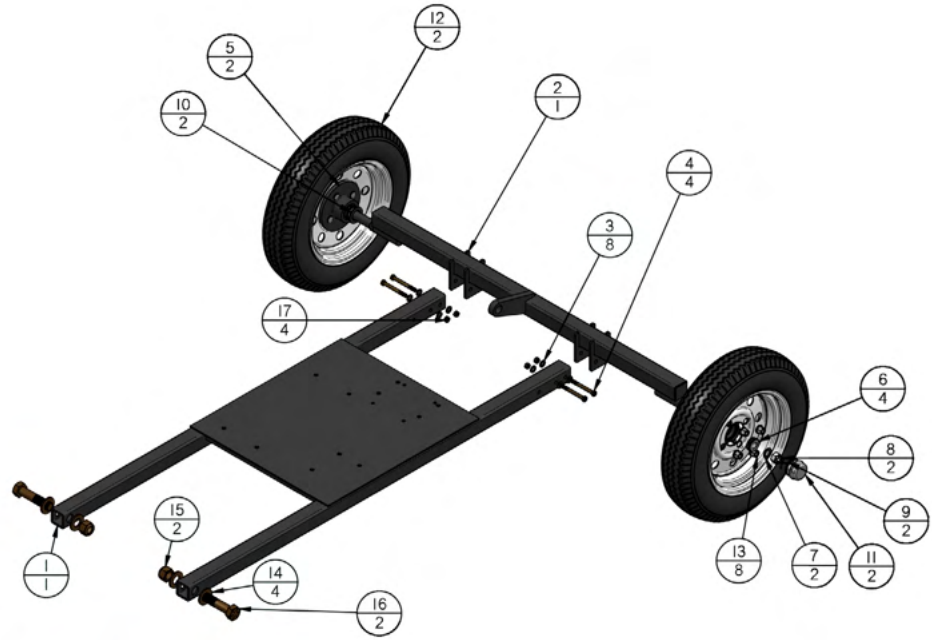
TWC-24 AND TWC-32 BOLT ON FOOT MOUNT



Assembly and Repair, cont.

TWC-12 + TWC-16 UPRIGHT BOLT ON AND AXLE

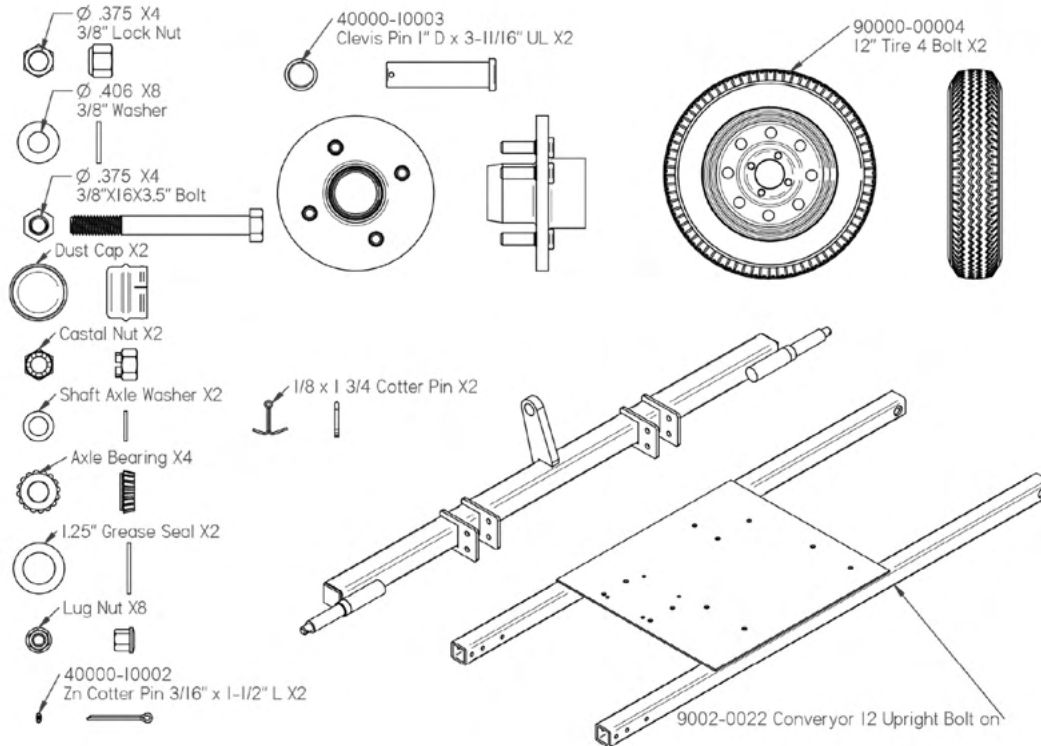
= Purchasable From Timberwolf Firewood Processing Equipment



Item No	Part No	Part Name	Qty
1	9002-0022	TWC-12 upright	1
2	9002-0020	TWC-12 Axle	1
3	.375 Washer	.375" Washer	8
4	.375x16 3.5 Bolt	.375x16 3.5 Bolt	4
5	90000-00002	4 Bolt Hub	2
6	255-353	1" Shaft Axle Bearing	4
7	255-351	1" Shaft Axle Washer	2
8	255-350	1" Shaft Castle Nut	2
9	255-352	1/8 x 1 3/4 Cotter Pin	2
10	255-354	1.25" Grease Seal	2
11	065-003	Dust Cap for All Wheel Hubs	2
12	90000-00004	12" Tire	2
13	255-355	Lug Nut	8
14	1 Washer	1" Flat Washer	4
15	1 Lock Nut	1 Lock Nut	2
16	1X8 4.5 Bolt	1X8 4.5 Bolt	2
17	.375 Nut	3/8" Nut	4

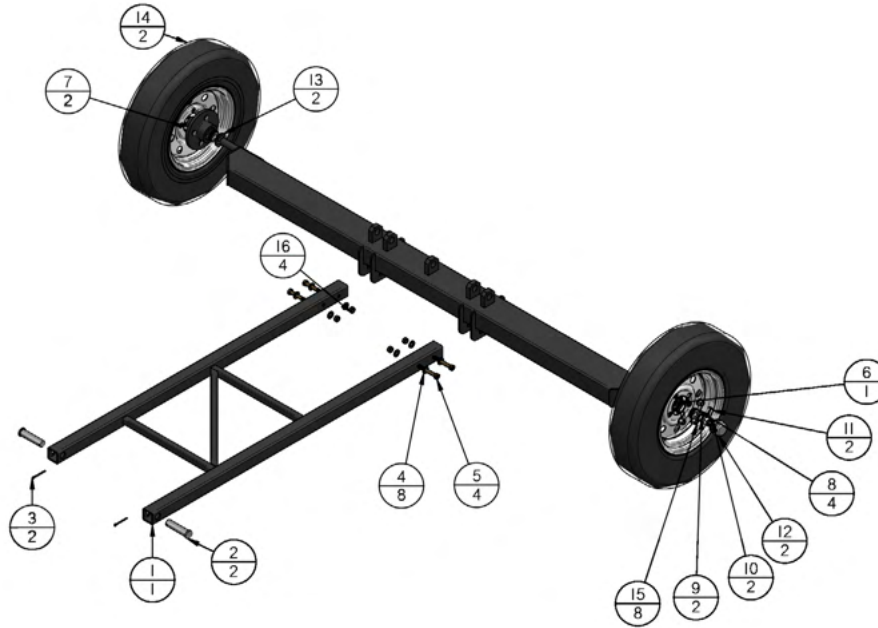
Assembly and Repair, cont.

TWC-12 UPRIGHT BOLT ON AND AXLE



Assembly and Repair, cont.

TWC-24 UPRIGHT BOLT ON AND AXLE

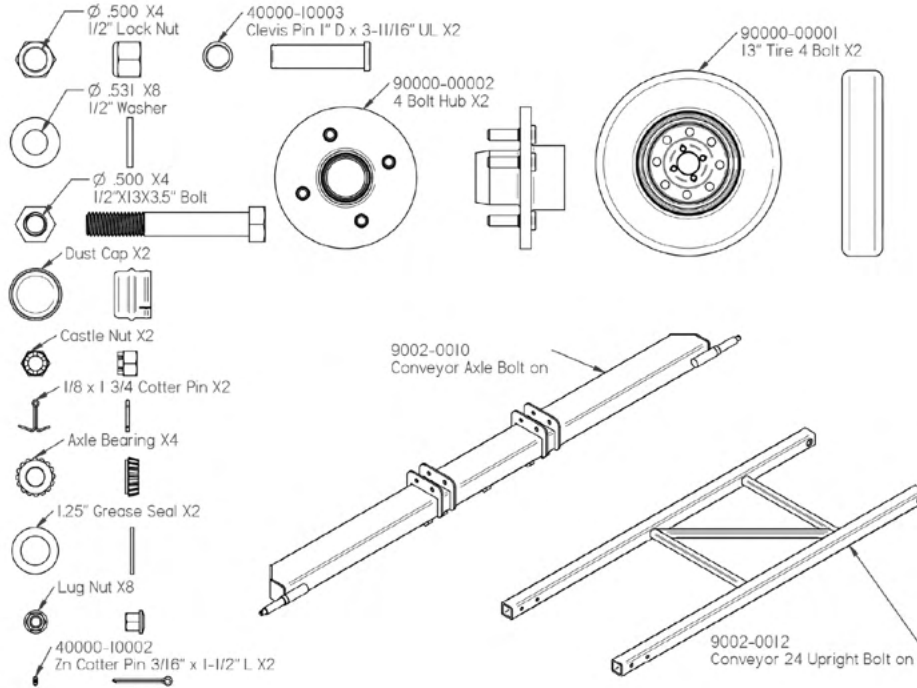


■ = Purchasable From Timberwolf
Firewood Processing Equipment

Item No	Part No	Part Name	Qty
1	9002-0012	24 Conveyor Upright Bolt On	1
2	40000-10003	1"D 4.5"L Pin	2
3	40000-10002	Zn Cotter Pin 3/16" x 1-1/2" L	2
4	.5 Washer	1/2" Washer	8
5	.5x13 3.5 Bolt	.5x13 3.5 Bolt	4
6	9002-0010	Conveyor Axle Bolt On	1
7	90000-00002	4 Bolt Hub	2
8	255-353	1" Shaft Axle Bearing	4
9	255-351	1" Shaft Axle Washer	2
10	255-350	1" Shaft Castle Nut	2
11	255-352	1/8 x 1 3/4 Cotter Pin	2
12	065-003	Dust Cap for All Wheel Hubs	2
13	255-354	1.25" Grease Seal	2
14	90000-00001	13 Tire 4 Lug	2
15	255-355	Lug Nut	8
16	.5 Nut	1/2" Nut	4

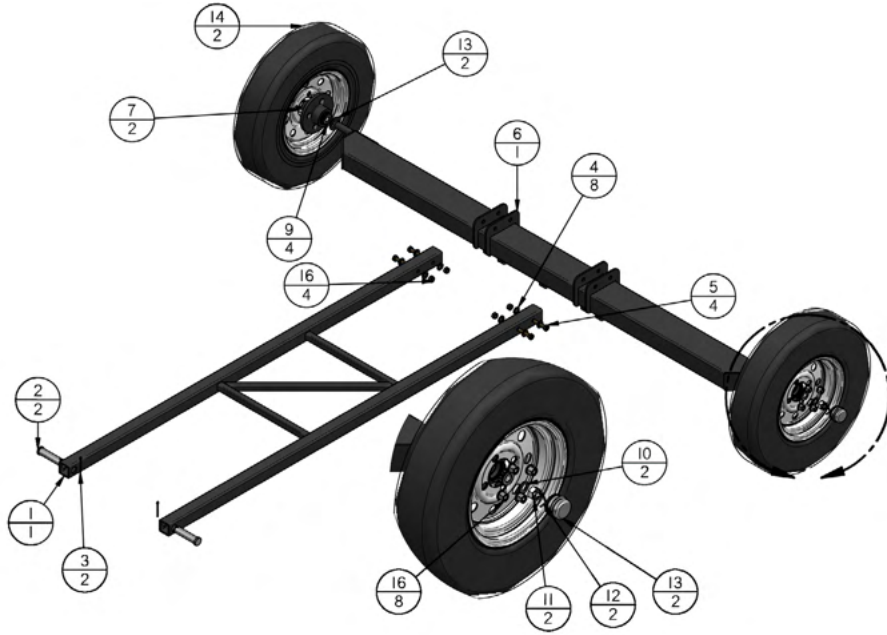
Assembly and Repair, cont.

TWC-24 UPRIGHT BOLT ON AND AXLE



Assembly and Repair, cont.

TWC-32 UPRIGHT BOLT ON AND AXLE

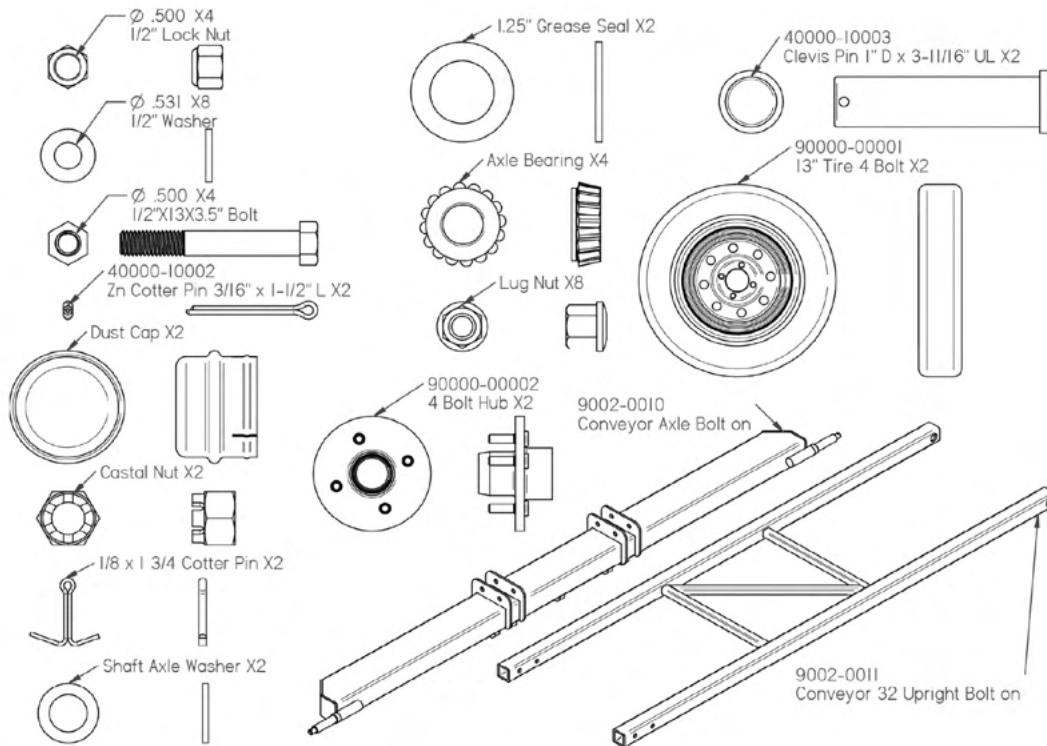


 = Purchasable From Timberwolf Firewood Processing Equipment

Item No	Part No	Part Name	Qty
1	9002-0011	Conveyor 32 Axle Bolt on	1
2	40000-10003	1" D 4.5" L Pin	2
3	40000-10002	Zn Cotter Pin 3/16" x 1-1/2" L	2
4	5	Washer 1/2" Washer	8
5	5x13 3.5 Bolt	.5x13 3.5 Bolt	4
6	9002-0010	Conveyor Axle Bolt On	1
7	90000-00002	4 Bolt Hub	2
8	255-353	1" Shaft Axle Bearing	4
9	255-351	1" Shaft Axle Washer	2
10	255-350	1" Shaft Castle Nut	2
11	255-352	1/8 x 1 3/4 Cotter Pin	2
12	065-003	Dust Cap for All Wheel Hubs	2
13	255-354	1.25" Grease Seal	2
14	90000-00001	13 Tire 4 Lug	2
15	255-355	Lug Nut	8
16	5 Nut	1/2" Nut	4

Assembly and Repair, cont.

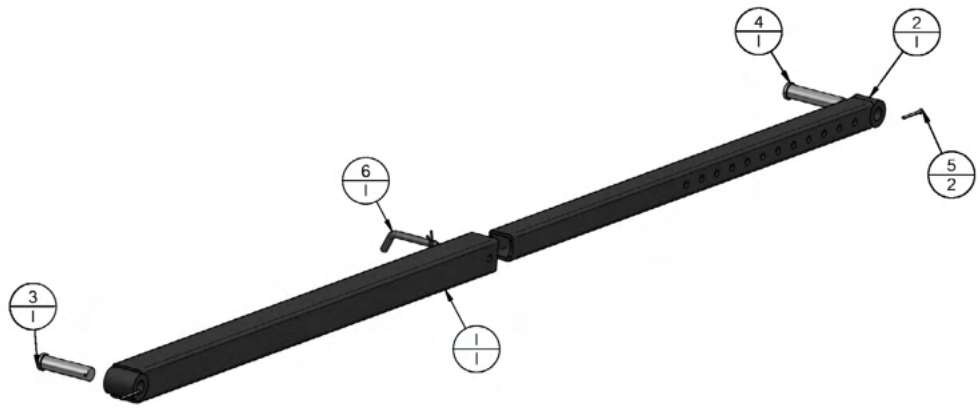
TWC-32 UPRIGHT BOLT ON AND AXLE



Assembly and Repair, cont.

TWC-24 AND TWC-32 TELESCOPIC AXLE ARM

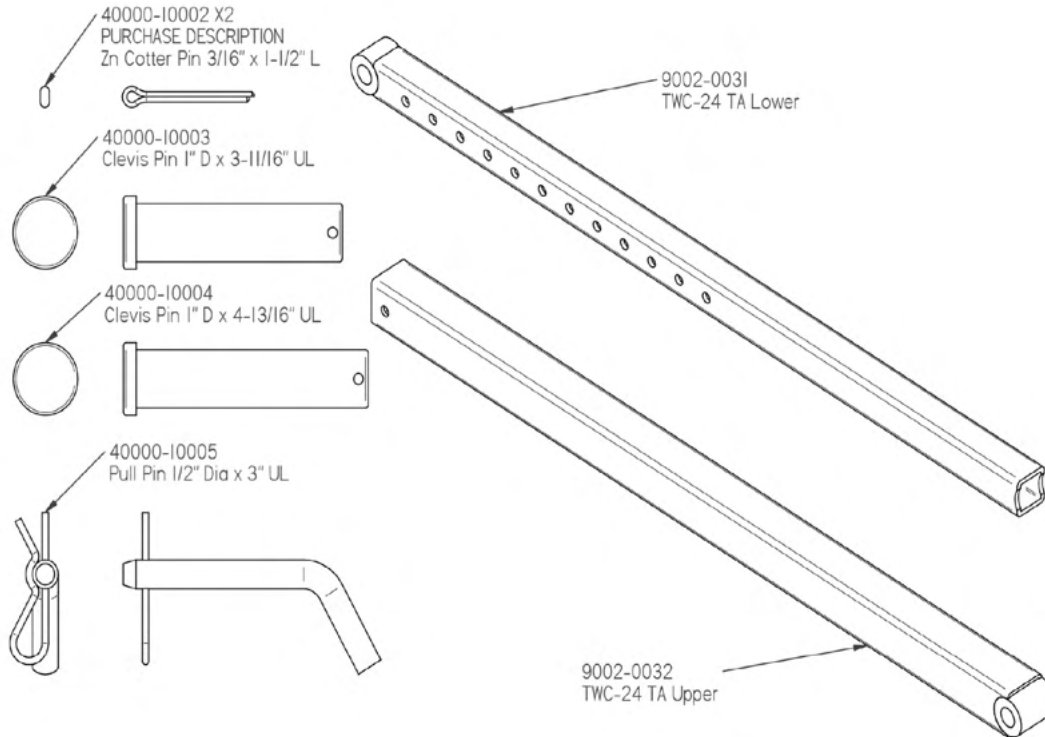
= Purchasable From Timberwolf Firewood Processing Equipment



Item No	Part No	Part Name	Qty
1	9002-0034	TWC-32 TA Upper	1
2	9002-0033	TWC-32 TA Lower	1
3	40000-10003	1"D 4.5"L Pin	1
4	40000-10004	1"D 4.5"L Pin	1
5	40000-10002	Zn Cotter Pin 3/16" x 1-1/2" L	2
6	40000-10005	Pull Pin 1/2" D x 3" UL	1

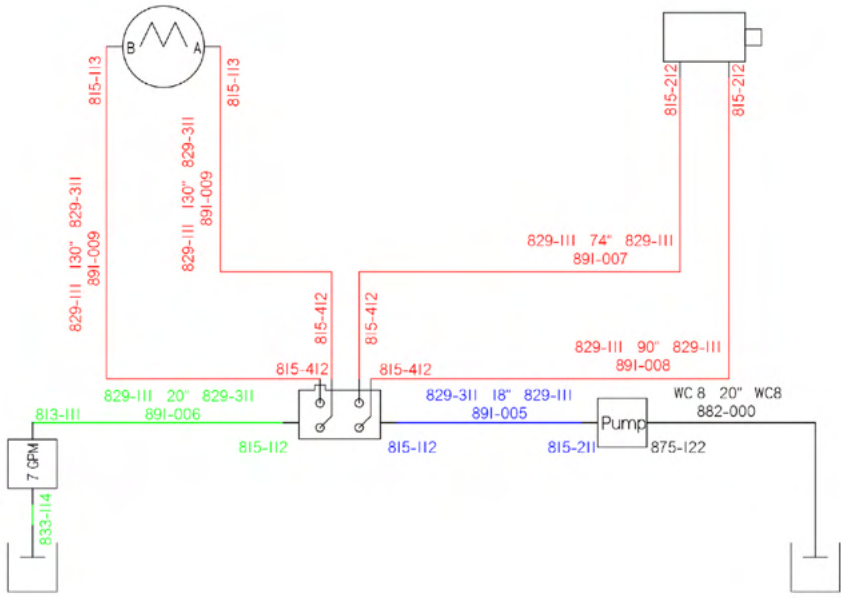
Assembly and Repair, cont.

TWC-24 AND TWC-32 TELESCOPIC AXLE ARM



Hydraulic Schematics

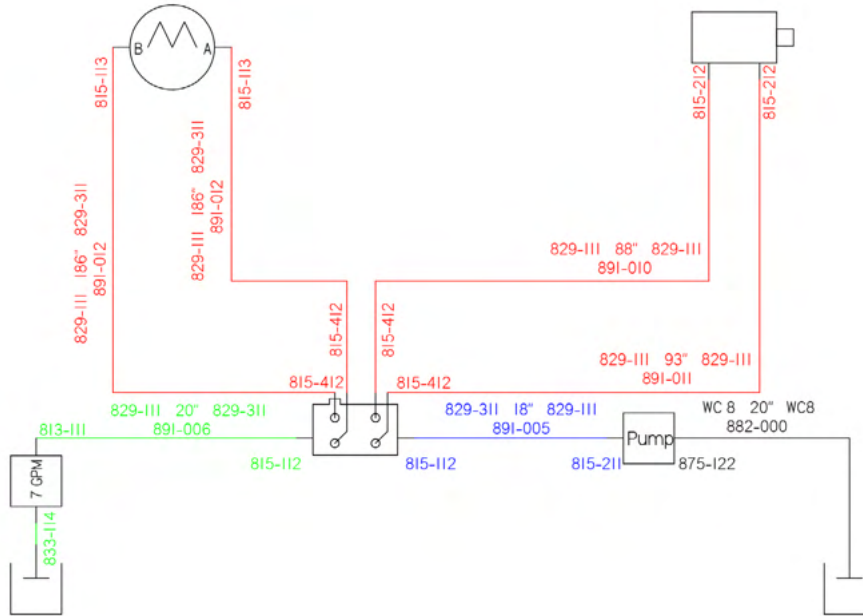
TWC-12



Hose Name	Length	Fitting 1	Fitting 2		Part No
#6 Pressure	18	829-111	829-311	Pump to Valve	891-005
#6 Pressure	20	829-111	829-311	Filter to Valve	891-006
#6 Pressure	74	829-111	829-111	Valve to Cylinder Solid End	891-007
#6 Pressure	90	829-111	829-111	Valve to Cylinder Rod End	891-008
#6 Pressure	130	829-111	829-311	Valve to Hyd Motor B Port	891-009
#6 Pressure	130	829-111	829-311	Valve to Hyd Motor A Port	891-009
#8 Suction	26	Worm X2	WC8	Tank to Pump	882-000
		Stight			
	90				

Hydraulic Schematics, cont.

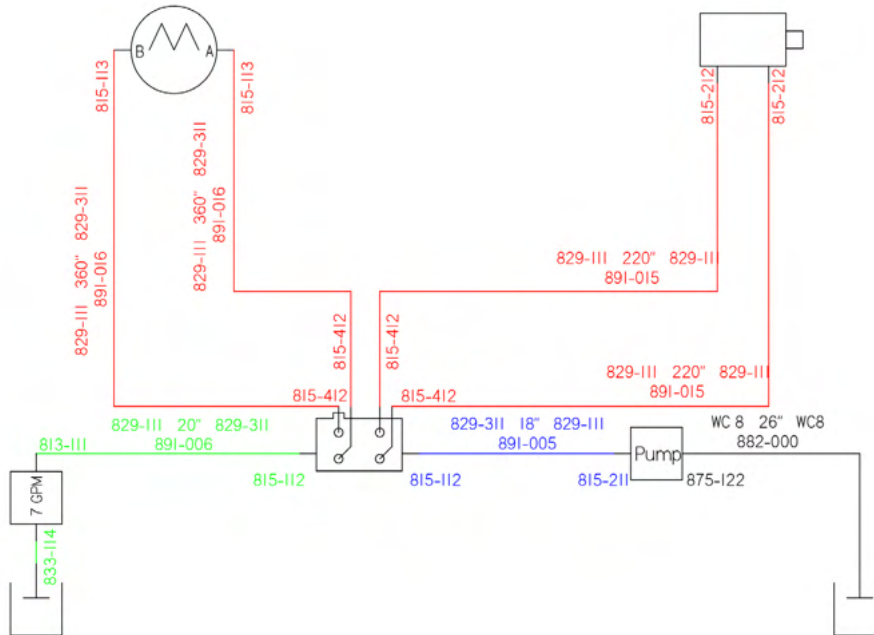
TWC-16



Hose Name	Length	Fitting 1	Fitting 2		Part No
#6 Pressure	18	829-111	829-311	Pump to Valve	891-005
#6 Pressure	20	829-111	829-311	Filter to Valve	891-006
#6 Pressure	88	829-111	829-111	Valve to Cylinder Solid End	891-010
#6 Pressure	93	829-111	829-111	Valve to Cylinder Rod End	891-011
#6 Pressure	186	829-111	829-311	Valve to Hyd Motor B Port	891-012
#6 Pressure	186	829-111	829-311	Valve to Hyd Motor A Port	891-012
#8 Suction	26	Worm X2	WC8	Tank to Pump	882-000
	Stight				
	90				

Hydraulic Schematics, cont.

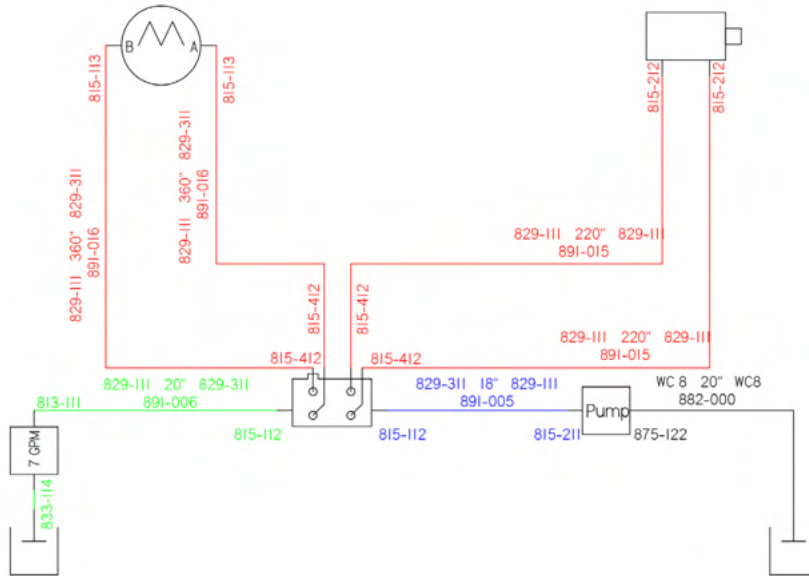
TWC-24



Hose Name	Length	Fitting 1	Fitting 2		Part No
#6 Pressure	18	829-111	829-311	Pump to Valve	891-005
#6 Pressure	20	829-111	829-311	Filter to Valve	891-006
#6 Pressure	220	829-111	829-111	Valve to Cylinder Solid End	891-015
#6 Pressure	220	829-111	829-111	Valve to Cylinder Rod End	891-015
#6 Pressure	360	829-111	829-311	Valve to Hyd Motor B Port	891-016
#6 Pressure	360	829-111	829-311	Valve to Hyd Motor A Port	891-016
#8 Suction	26	Worm X2	WC8	Tank to Pump	882-000
		Slight			
		90			

Hydraulic Schematics, cont.

TWC-32



Hose Name	Length	Fitting 1	Fitting 2		Part No
#6 Pressure	18	829-111	829-311	Pump to Valve	891-005
#6 Pressure	20	829-111	829-311	Filter to Valve	891-006
#6 Pressure	220	829-111	829-111	Valve to Cylinder Solid End	891-015
#6 Pressure	220	829-111	829-111	Valve to Cylinder Rod End	891-015
#6 Pressure	360	829-111	829-311	Valve to Hyd Motor B Port	891-016
#6 Pressure	360	829-111	829-311	Valve to Hyd Motor A Port	891-016
#8 Suction	26	Worm X2	WC8	Tank to Pump	882-000
	Stight				
	90				

TWC Transport



READ PRIOR TO TRANSPORTING - The TWC will add significant length to your vehicle when attached. The added length of the conveyor may reduce stability and increase the radius of your vehicle's turns. To prevent accidents, beware of your surroundings.

Ensure no material is on the conveyor belt or in the hopper. The conveyor should be in the lowest angle/height position with the pull pins securing the telescopic axle arms (TWC-24 and TWC-32 ONLY). Ensure no one is riding the conveyor while in transport. NEVER exceed 30 mph while the conveyor is in tow. The TWC is NOT approved to be towed via hitch on public roads. The TWC must be secured on a trailer when being towed on public roads.

DIRECTLY ATTACH CONVEYOR - Ensure the ball coupling is locked onto the 2" ball hitch coupler. Always use safety chains, as you would with any other trailer being towed.

SAFETY PINS - Always ensure the pull pins and cotter pins are securing the telescopic axle arms when the TWC is in transport and/or any time the conveyor is not actively being raised or lowered (this instruction is applicable with the TWC-24 and TWC-32 ONLY).

GRIZZLY BARS WITH FINES SEPARATOR (OPTIONAL ADD-ON COMPONENT) - If your machine is equipped with Grizzly Bars, detach them prior to transport and safely stow them away.

STORAGE - When stored for 2 or more months, ensure the gasoline is emptied from the TWC's fuel tank. Fuel stored in the carburetor can gel and eventually cause issues with the carburetor. The TWC is made for outdoor use, but you can prolong the life of your conveyor by storing it indoors. Exposing the rubber belt and hoses to direct sunlight and other weather for extended periods of time can decrease their lifespan.

Troubleshooting the TWC

BELT WON'T TURN

- Ensure the hydraulic fluid level is correct
- Check the hydraulic valves to ensure they are in the open-center position
- Check for proper belt tension
 - Aim for 3-4" of belt sag on the underside of the conveyor
- Inspect the belt to ensure proper alignment
- Check the connection between the engine and hydraulic pump while the engine is OFF
 - If any fitting is loose, tighten it
 - If any hoses are damaged, replace them prior to starting the unit

ENGINE WON'T START OR RUNS POORLY

- Be certain the hydraulic valves are in the open-center position when starting the conveyor (see image for correct positioning)
- Ensure the correct fuel type is being used and that the fuel tank is full



UNIT WON'T RAISE

- Ensure the pull pins are removed from telescopic axle arms during raising and/or lowering (this instruction is applicable with the TWC-24 and TWC-32 ONLY)
- Check the hydraulic fluid level and ensure the fluid is within 2" of the cap
- Make sure you are using the correct type of hydraulic fluid

MORE QUESTIONS?

Don't hesitate to contact the certified Timberwolf Firewood Processing Equipment dealer where you purchased your machine from, Timberwolf Firewood Processing Equipment at (607) 307-4029 via phone, or sales@timberwolfequip.com via email.