



TIMBERWOLF
FIREWOOD PROCESSING EQUIPMENT

TW-10 Owner's Manual

Instructions for Assembly, Operation, Maintenance, Transportation, and Storage



Read and understand this owner's manual completely before operating the TW-10

All operators of the TW-10 must read and completely understand all safety, operating, maintenance, transportation, and storage instructions. Failure to properly operate and maintain the TW-10 can result in serious injury or death to the operator and bystanders, as well as damage to the TW-10.

Table of Contents

- Terminology
- Safe Operation of the TW-10
- General Overview
- TW-10 Specifications
- Ensuring the Longevity of the TW-10
- Operating Instructions
- Assembly and Repair
- Hose Routing
- TW-10 Transport
- Troubleshooting the TW-10

Terminology

- Bore: Measurement of the hole inside a cylinder
- Hatz: German manufacturer of diesel engines
- HP: Horsepower
- GPM: Gallons per Minute
- Stroke: Difference between the fully extended length and fully retracted length of the cylinder



Safe Operation of the TW-10

ALL TW-10 OPERATORS MUST READ AND COMPLETELY UNDERSTAND ALL SAFETY INFORMATION, HOW TO SAFELY OPERATE THE TW-10, HOW TO ENSURE THE LONGEVITY OF THE TW-10, HOW TO TRANSPORT THE TW-10, AND HOW TO PROPERLY STORE THE TW-10 LONG-TERM. FAILURE TO PROPERLY OPERATE AND MAINTAIN THE LOG SPLITTER CAN RESULT IN SERIOUS INJURY OR DEATH TO THE OPERATOR AND/OR BYSTANDERS. BE AWARE OF THE FOLLOWING HAZARDS:

AVAILABLE MEANS - Use of the TW-10 requires that the user has the available means to lift and load logs, as well as pick up and manage split sections.

CARBON MONOXIDE - When in use, the engine outputs carbon monoxide. NEVER operate the TW-10 indoors and always work in a well-ventilated area.

CRUSH HAZARDS - Moving parts on the TW-10 can crush hands and fingers. Keep hands and loose articles of clothing clear from the TW-10, the push block, wedge, and split logs WHILE THE LOG SPLITTER IS IN USE.

FIRE HAZARDS - Keep a Class B fire extinguisher used for gasoline, grease, and oil fires nearby AT ALL TIMES. Store fuel and oils in an approved flammable liquid storage container. NEVER use water to extinguish any gasoline and/or oil fire.

Safe Operation of the TW-10, cont.



HIGH PRESSURE HYDRAULIC FLUID HAZARDS - High fluid pressures and temperatures may occur with this log splitter. To ensure the safety of the user, inspect the hydraulic system regularly for possible leaks and/or cracks in the hoses. NEVER check for leaks with your hand while the system is pressurized. High pressure hydraulic fluid can puncture skin and cause serious injury, including blood poisoning. Seek medical attention immediately if injured by escaping fluid.

PLACEMENT - Ensure the TW-10 is operated on level ground and that the unit cannot tip over or fall. Failure to do so can result in a damaged machine, serious injury, or death.

SAFETY EQUIPMENT - When the TW-10 is in operation, wood chips, sawdust, and other small materials may be tossed into the air. To ensure the protection of your eyes, wear safety glasses AT ALL TIMES while operating the TW-10. Additionally, split sections of the log will fall off the machine when split. To ensure your safety, wear steel-toed boots AT ALL TIMES while operating the TW-10.

SERVICING - When servicing the TW-10, always do so from a solid surface on the ground with the machine OFF. Ensure residual energy is released from the pressurized hydraulic fluid before servicing. NEVER service the log splitter while the engine is running. NEVER climb on the TW-10 to service the machine.

General Overview

1 - DIESEL TANK

2 - HYDRAULIC TANK

3 - CONTROL TOWER

4 - 8" CYLINDER

5 - PUSH BLOCK

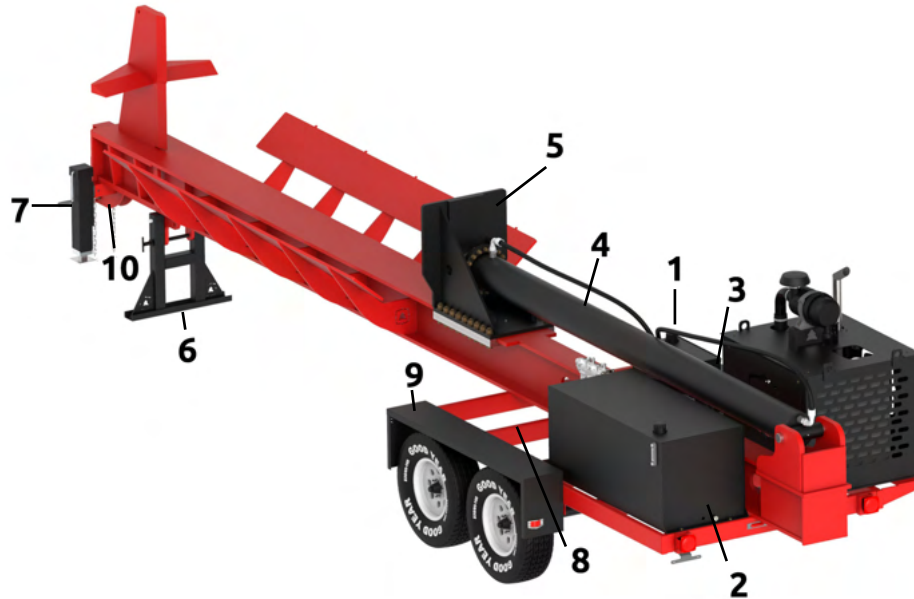
6 - TW-10 LEG

7 - REMOVABLE JACK

8 - AXLES

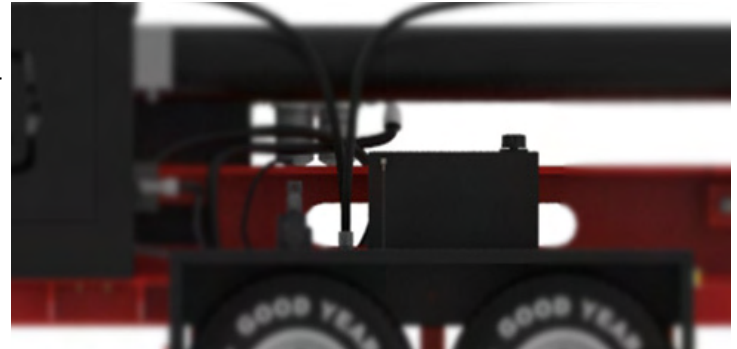
9 - FENDER

10 - BALL HITCH COUPLER



General Overview, cont.

(1) **DIESEL TANK** - The TW-10's diesel tank holds 20 gallons of diesel fuel and uses 2-2.5 gallons per hour. Because of the diesel tank's size the TW-10 can operate for 8-10 hours without breaks in production. NEVER check the diesel tank while the TW-10 is in operation.



(2) **HYDRAULIC TANK** - The TW-10 features a large 110-gallon hydraulic tank that allows the machine to maintain cool and filtered hydraulic fluid. Such a large hydraulic fluid tank is needed because the TW-10's 8" cylinder heats up 30 gallons of fluid with a single stroke. NEVER check the hydraulic tank while the TW-10 is in operation.



General Overview, cont.

(3) **CONTROL TOWER** - While the TW-10 is remote control operated, the control tower is used to turn the machine on and off, adjust the throttle, and diagnose pressure issues via the pressure gauge. To start the machine insert the key in the keyhole (located at the bottom of the control tower). Adjust your throttle by pushing the buttons above the keyhole. The pressure gauge is located at the top of the control tower, above the throttle control.

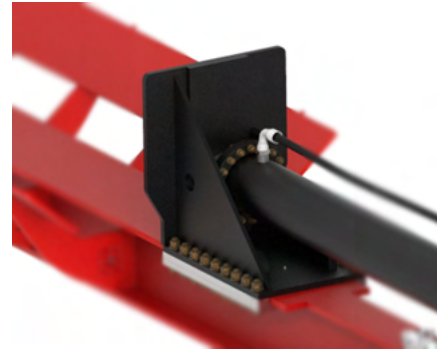


(4) **8" CYLINDER** - When in operation, the 8" cylinder moves the push block forwards with 184,000 pounds of splitting force. NEVER have your hands, fingertips, and/or loose clothing near the 8" cylinder, push block, and/or the splitting chamber of the TW-10. NEVER alter/remove the bolts, fittings, and/or hoses on the TW-10 unless it is being serviced by a certified representative of Timberwolf Firewood Processing Equipment.



General Overview, cont.

(5) **PUSH BLOCK** - The push block is what makes contact with the log when the 8" cylinder is in extension. ALWAYS ensure that your fingertips, hands, and/or loose clothing are a safe distance from the push block while it is in operation. NEVER alter/remove any nuts/bolts and/or fittings from the push block unless it is being serviced by a certified representative of Timberwolf Firewood Processing Equipment.



(6) **TW-10 LEG** - The TW-10 leg is constructed from 2.5" tubing and is secured by two 1" pins. This wide platform stabilizes the TW-10 while in operation. The TW-10 leg is NOT removable. If for any reason the 1" pins must be removed, ENSURE that they have been re-inserted prior to operation.



General Overview, cont.

(7) **REMOVABLE JACK** - The TW-10's jack is used to assist in attaching the machine's ball hitch coupler to a ball hitch. When in operation and/or while being transported the jack should be removed from the TW-10.



(8) **AXLES** - The TW-10 is equipped with dual 7,000 pound axles and a total of four wheels, two on each side of the machine, interconnected by said axles. These axles feature a full braking system for transporting the TW-10 on the road. NEVER alter the machine's axles. This may eliminate the TW-10's ability to be transported and can result in serious injury or death.



General Overview, cont.

(9) **FENDER** - The TW-10 is equipped with two fenders. The TW-10's fenders protect the wheels and axles from unnecessary weathering and other damage.



(10) **BALL HITCH COUPLER** - Located at the front of the TW-10, the ball hitch coupler fits to a standard ball hitch so the machine can be transported. **ALWAYS** ensure that the ball hitch coupler is properly attached to the ball hitch and that the safety chains are attached before transporting.



TW-10 Specifications

CYCLE TIME - 54 Seconds

CYLINDER BORE - 8"

DIESEL TANK SIZE - 20 Gallons

ENGINE - 74 HP Hatz Diesel Engine

FILTRATION - 70 GPM Zinga Filter

FUEL - Diesel Fuel

FRAME HEIGHT - 79"

FRAME LENGTH - 30'

FRAME WIDTH - 91"

GREASE - The TW-10 may be greased with multi-purpose grease or a similar grease, using a grease gun

TW-10 Specifications, cont.

HOSES - Continental hoses

HYDRAULIC FLUID - ISO 46

HYDRAULIC PUMP - 33 GPM Permco Gear Pump

HYDRAULIC TANK SIZE - 110 Gallons

MOTOR OIL - 5W-30 motor oil is recommended

OPERATION - Remote Control Operated

PUMP FLOW - 33 GPM

SPLITTING FORCE - 184,000 Pounds

STROKE - 12'

TOTAL WEIGHT - 13,640 Pounds

Ensuring the Longevity of the TW-10

INTENDED USE - The TW-10 is designed to split logs that cannot be processed - wide as 5' and long as 12' - into quarters that can then be fed onto a processor or into a wood chipper.

UPON RECEIPT OF YOUR TW-10 -

1. Locate the metallic plate on the machine that has the serial number
2. Inspect for any loose/damaged components that may have occurred during shipping
 - If there are loose components, fasten them securely prior to use
 - If any components are damaged, contact your dealer of purchase and/or contact sales@timberwolfequip.com with images of the damaged parts
3. Check fluid levels
 - If the motor oil is low, add more 5W-30 motor oil
 - After the first 5 hours of use, change the motor oil
 - If the hydraulic fluid is low, add ISO 46 hydraulic fluid or a similar hydraulic fluid

If upon receipt your TW-10 has any issues, contact the dealer from where you purchased your machine, or contact Timberwolf Firewood Processing Equipment at (607) 307-4029 for service.

Ensuring the Longevity of the TW-10, cont.

DAILY MAINTENANCE -

- Check fluid levels and ensure that your diesel tank is full prior to operation
- Check hydraulic hoses for wear and save downtime by replacing hoses before they fail
- Ensure all nuts, bolts, and fittings are secured
- Check high-stress joint welds
- Check all grease points and grease as needed
- Grease the push block and check the wear plate bolts after every 4 hours of operation
- Test emergency shut off button on the remote control unit

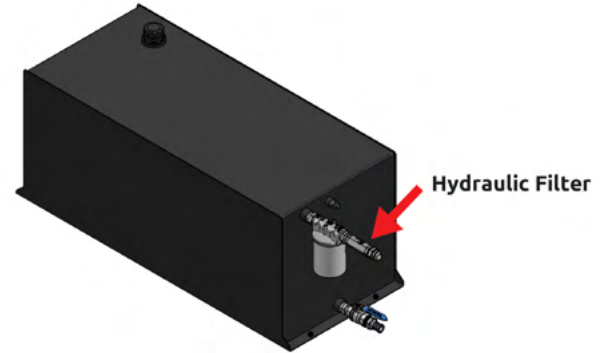
Ensuring the Longevity of the TW-10, cont.

MONTHLY MAINTENANCE -

- Replace motor oil

YEARLY MAINTENANCE -

- Replace hydraulic filter after every 250-hour period of use or twice per year
- Change the motor oil after each 250-hour period of use
- Replace hydraulic fluid after 500 hours of use or a year - whichever comes first
- Repack axle bearings with multi-purpose grease



Operating Instructions

ENGINE START UP -

1. Ensure the shut-off petcock and hydraulic tank shut-off valve are OPEN before starting the TW-10

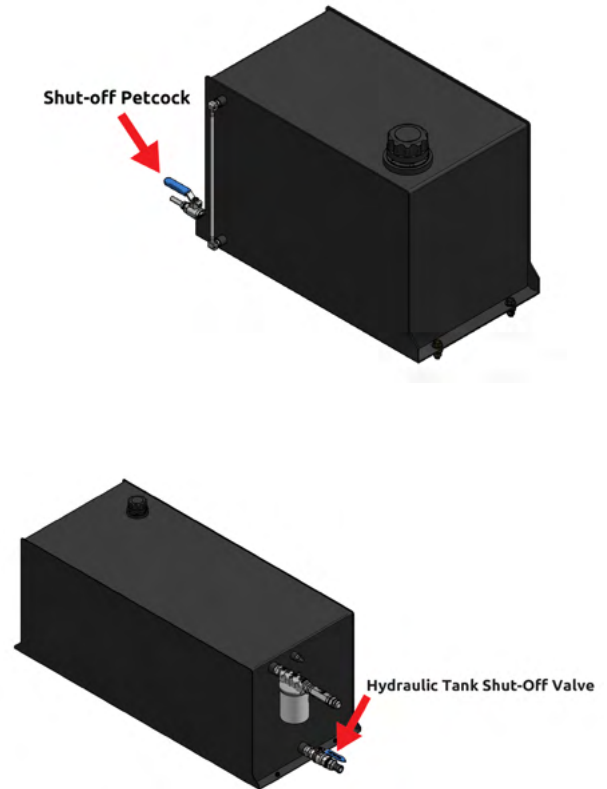
- The shut-off petcock and hydraulic tank shut-off valve should ALWAYS remain OPEN during operation

2. Locate the control tower, insert your key, and allow the log splitter to warm up at idle before operating

- Warm up the engine at idle for 8-10 minutes
- In winter weather, ensure the hydraulic fluid is heated up to at least 80 Degrees Fahrenheit
- Do not operate the log splitter before the engine and hydraulic fluid are properly warmed up

3. Adjust your throttle and set the engine at a speed you are comfortable with

- The engine should run between 1,500 and 3,000 RPM



Operating Instructions, cont.

REMOTE CONTROL OPERATION -

- Press the green button (shown here) to turn on the remote control
- The red button in the middle of the remote control will light up when the green button is being pressed
- The red button in the middle of the remote control will blink while the transmitter is active
- Ensure the emergency kill switch (shown here) is working properly prior to operation
- As a safety feature, the transmitter will automatically transmit a "STOP" signal after 30 minutes
- Press the green button to re-activate the remote control



Operating Instructions, cont.

REMOTE CONTROL OPERATION, cont. -

- Press the yellow button with an outward facing arrow (shown here) to drive the push block forward
- When the remote control's battery is low the red button in the middle of the remote control will pulse
- Press the yellow button with an inward facing arrow (shown here) to retract the push block
- Ensure you are within 200' of the TW-10 while operating

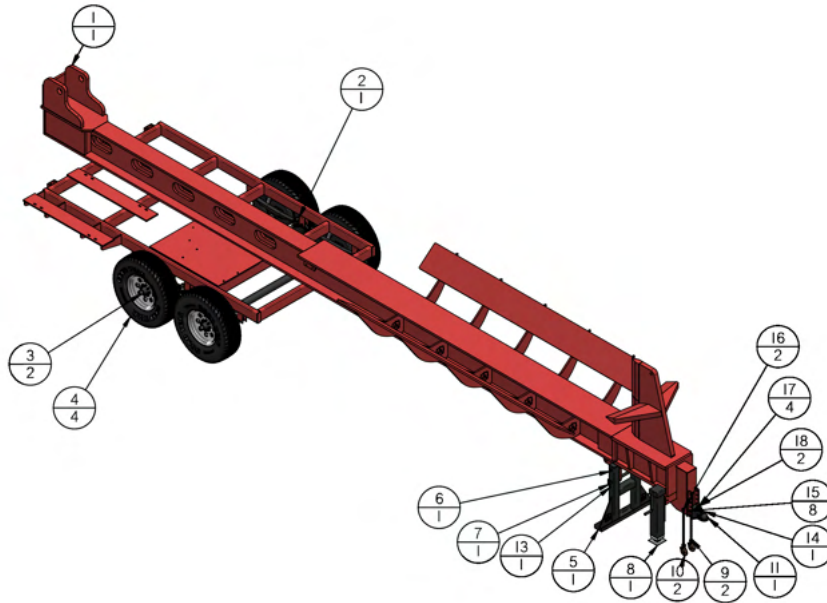


Assembly and Repair

With normal use of the TW-10, replacement parts and repairs may be needed. Reference the “Assembly and Repair” section for parts, part quantities, and assembly instructions.

MAIN FRAME

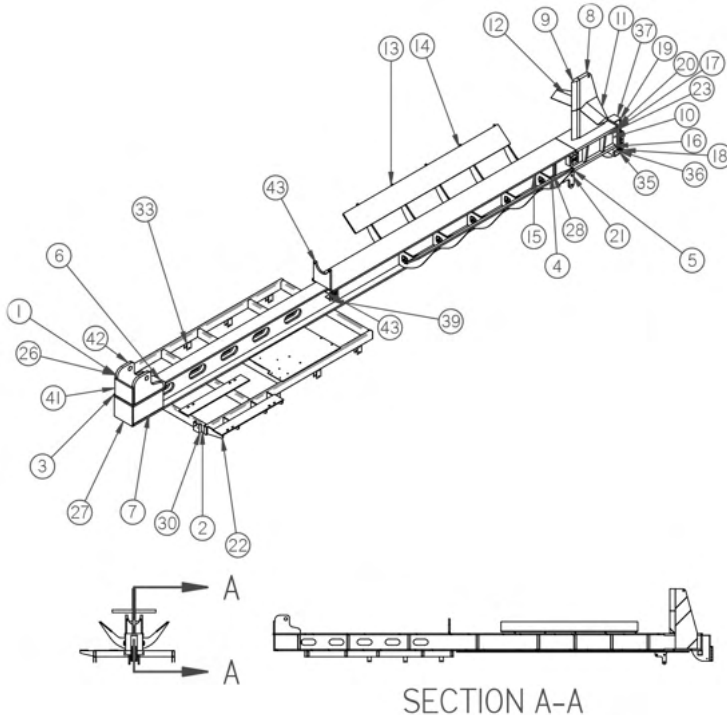
= Purchasable From Timberwolf Firewood Processing Equipment



Item No	Part No	Part Name	Qty
1	9001-0092	TW-10 Main Frame	1
2	90000-00014	Hanger Bolts, Nuts, Connectors	1
3	254-361	Pro MPX Axle	2
4	254-813	16" Wheel 8 Lug	4
5	9001-0087	TW-10 Leg	1
6	9001-0117	TW-10 Leg Shaft	1
7	9001-0091	TW-10 Leg Pin	1
8	9001-0126	TW-10 Jack	1
9	90000-00020	5/16" Safety Chain Gold for TW-10	2
10	90000-00021	5/16 Safety hook Golden for TW-10	2
11	90000-00022	TW-10 Ball Coupler 20000LB	1
12	40000-10006	Pull Pin 1/2" x 4" Usable	1
13	40000-10001	Coupler Snapper Pin 1/4" x 2"	1
14	90000-00023	1/4 Safety Pin x3.5" Wide	1
15	.5 Washer	1/2" Washer	8
16	.5x13 1.75 Bolt	1/2"x13 2 Bolt	2
17	.5 Lock Nut	1/2" Lock Nut	4
18	.5x13 5 Bolt	.5x13 5 Bolt	2

Assembly and Repair, cont.

MAIN FRAME

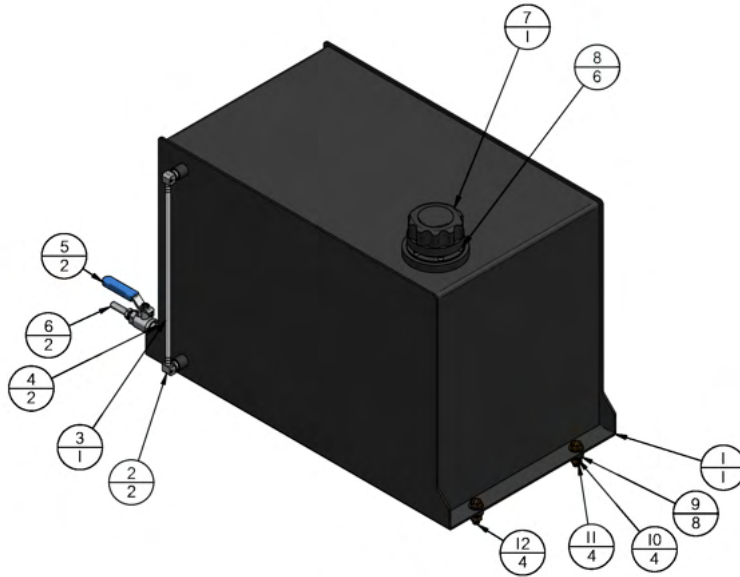


**= Purchasable From Timberwolf
Firewood Processing Equipment**

Item No	Part No	Part Name	Qty
1	255-673	TW-IG Frame Tube 2	2
2	253-656	TW-IG Frame Tube 1	5
3	255-677	TW-IG Cylinder Bottom Plate	1
4	256-651	TW-IG Frame Center Plate	2
5	256-650	TW-IG Frame Center Bottom	1
6	255-680	TW-IG Frame Top Plate 12"	1
7	255-686	TW-IG Cylinder Center Support	2
8	255-692	TW-IG Wedge Support	1
9	255-693	TW-IG Center Wedge	2
10	255-703	TW-IG Wedge Support	2
11	255-696	TW-IG Right Side Wedge	1
12	255-697	TW-IG Left Side Wedge	1
13	255-700	TW-IG Tray Support	10
14	256-652	TW-IG Tray	2
15	256-849	TW-IG Center Top 15"	1
16	255-705	TW-IG Wedge Support Bottom	1
17	255-704	TW-IG Wedge Support Top	1
18	251-931	Pro Hitch Receiver Mt	2
19	258-179	Plate 20x75x5.5	1
20	255-707	TW-IG Frame Front Plate	1
21	255-710	TW-IG Leg Mount	2
22	256-636	4.5"x13"x5" Gusset	4
23	256-755	TW-IG Wedge Support	4
24	256-761	TW-IG Cylinder Support	2
25	256-762	TW-IG Space Tube	8
26	254-320	2x5x10 1875 End Cap	4
27	256-758	TW-IG Back Cover Plate	1
28	256-764	TW-IG Wedge Center Spacer	2
29	257-003	TW-IG D08 Plate	1
30	255-782	TW-IG Trailer Light Bracket	2
31	257-004	TW-IG Trailer Wire Tube	1
32	256-638	4.5"x13"x5" Gusset	1
33	251-818	Pro HD Leaf Spring Hangers	2
34	256-443	Pro Engine Base Weld On Frame	2
35	257-005	TW-IG Hitch Plate	2
36	257-006	TW-IG Frame Jack Tube	1
37	257-025	TW-IG Hitch Top Plate 5x6x.25	1
38	258-659	TW-IG Limit Switch Base Plate	2
39	258-658	PLC Limit Switch Plate	2
40	255-676	TW-IG Cylinder Back Plate	1
41	255-675	TW-IG Cylinder Plate	2
42	255-667	TW-IG Cylinder Support Bottom	1
43	258-607	Plate 6x6x.25	2

Assembly and Repair, cont.

DIESEL TANK

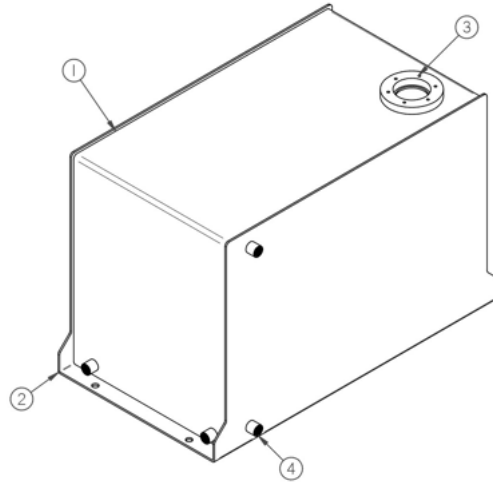
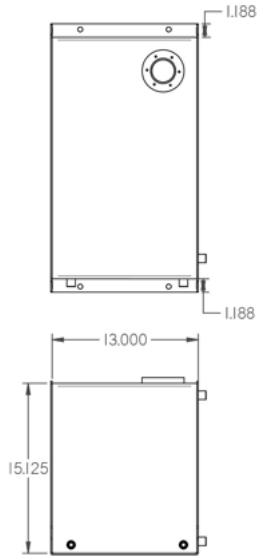



= Purchasable From Timberwolf
Firewood Processing Equipment

Item No	Part No	Part Name	Qty
1	9001-0126	TW-10 Diesel Tank	1
2	873-200	#4 Hose Barb to #4 NPT M 90	2
3	254-381	Pro Bar Oil Sight Tube	1
4	833-100	#4 NPT M to #4 NPT M SS	2
5	50000-30007	1/4" SS Ball Valve	2
6	800-149	5/16" Barb to #4 NPT M SS	2
7	20000-10004	Breather Filler	1
8	10-32 x 0.5 Socked Head	10-32 x 0.5" Socked Head	6
9	.375 Washer	.375" Washer	8
10	.375 Spring Washer	3/8" Spring Washer	4
11	.375 Nut	3/8" Nut	4
12	3/8x16 1.25 Bolt	3/8"x16 1.25 Bolt	4

Assembly and Repair, cont.

DIESEL TANK

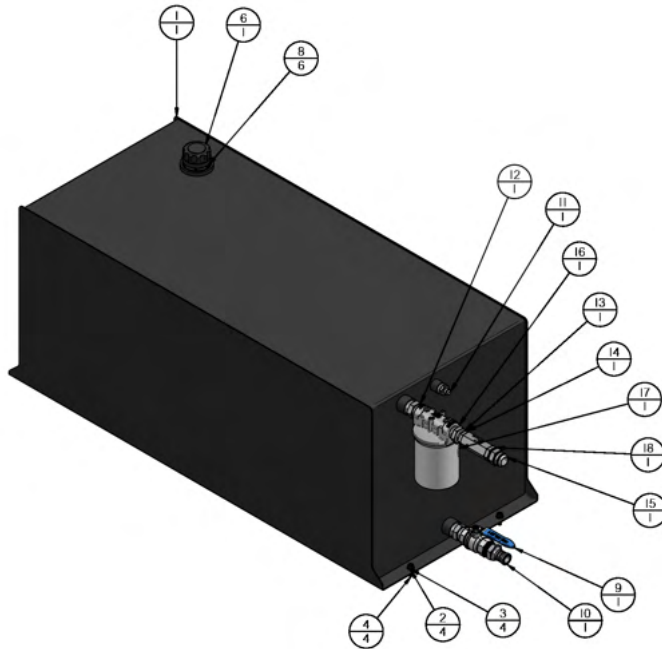


 = Purchasable From Timberwolf
Firewood Processing Equipment

Item No	Part No	Part Name	Qty
1	257-002	TW-10 Diesel Tank Top	1
2	257-001	TW-10 Diesel Tank Bottom	1
3	251-640	Plate, Filler Neck, Cap Ring	1
4	800-035	1/4 NPT Bung	4

Assembly and Repair, cont.

HYDRAULIC TANK



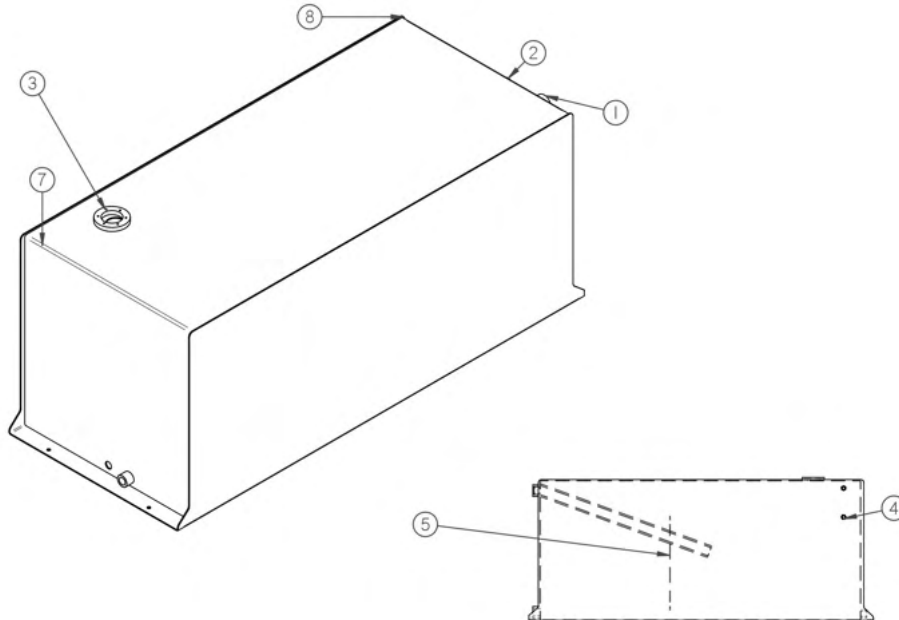
= Purchasable From Timberwolf Firewood Processing Equipment

Item No	Part No	Part Name	Qty
1	9001-0089	TW-10 Hyd Tank	1
2	375 Washer	.375" Washer	4
3	375 Spring Washer	3/8" Spring Washer	4
4	375x16 1.25 Bolt	3/8"x16 1.25 Bolt	4
5	253-488	3/4" NPT Plug #1/2"	1
6	20000-10004	Breather Filter	1
7	20000-20027	Sight Level Gauge	1
8	10-32 x 0.5 Socked Head	10-32 x 0.5" Socked Head	6
9	50000-30006	Ball Valve 1.25M to 1.25F NPT	1
10	873-166	#20 Barb to #20 NPT M	1
11	813-124	#8 JIC M to #12 NPT M	1
12	833-166	#20 NPT M to #20 NPT M	1
13	834-165	#16 NPT F to #20 NPT M	1
14	835-155	#16 NPT M to #16 ORB M	1
15	815-165	#20 JIC M to #16 ORB M	1
16	20000-20019	70 GPM Filter Head	1
17	20000-20018	70 GPM Filter	1
18	50000-10019	Pro In-line Check Valve	1

Assembly and Repair, cont.

HYDRAULIC TANK

= Purchasable From Timberwolf
Firewood Processing Equipment

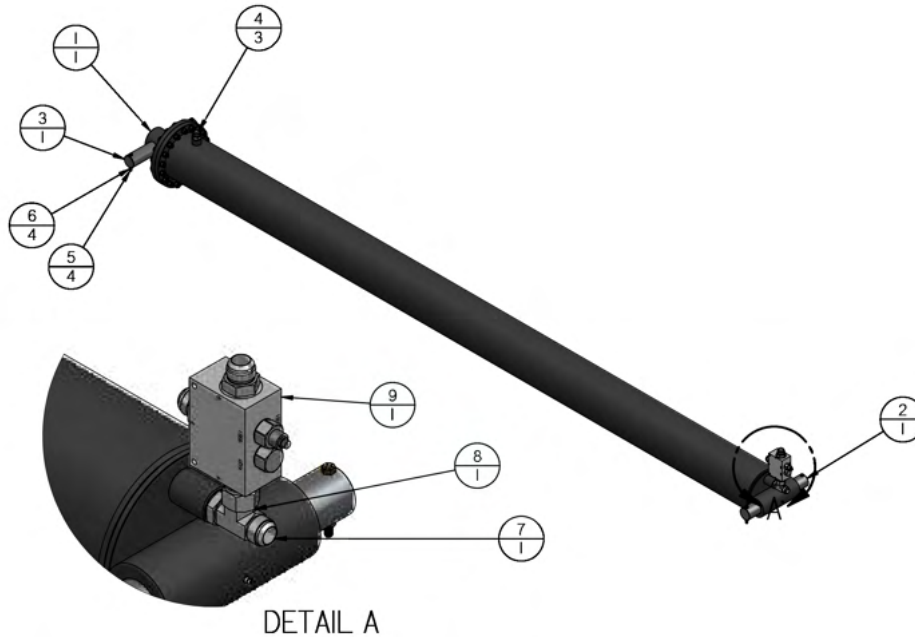


Item No	Part No	Part Name	Qty
1	253-268	1-1/4 Bung	2
2	253-486	3/4" NPT Bung	2
3	251-640	Plate, Filler Neck, Cap Ring	1
4	254-182	1/2 Weld Nut	2
5	255-836	TW-10 Hyd Tank Baffle	1
6	255-770	TW-10 Hyd Tank Return Tube 1.25	1
7	255-835	TW-10 Hyd Tank Top	1
8	255-834	TW-10 Hyd Tank Bottom	1
9	257-000	TW-10 Hyd Tank Return Tube 1.25	1

Assembly and Repair, cont.

8" HYDRAULIC CYLINDER

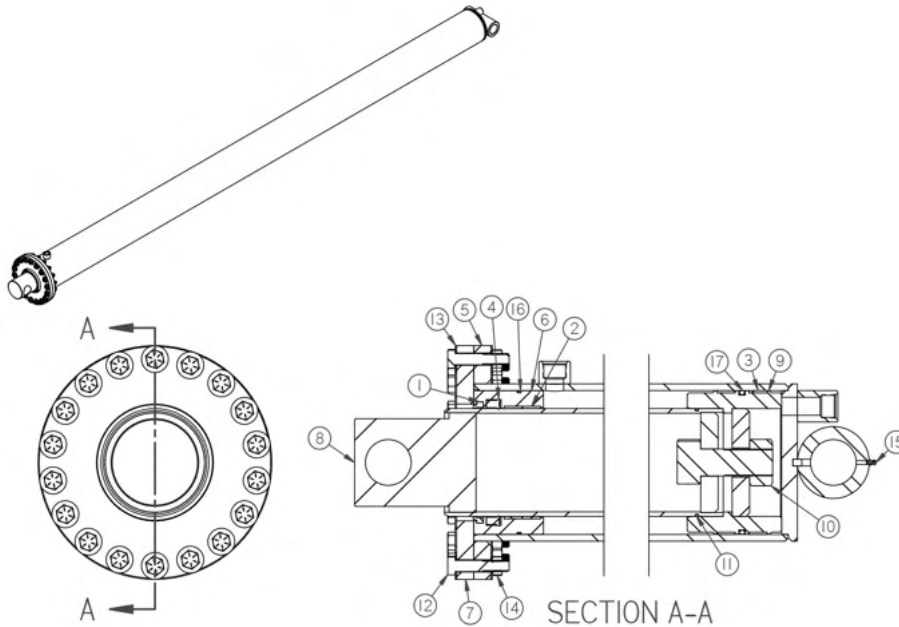
= Purchasable From Timberwolf
Firewood Processing Equipment



Item No	Part No	Part Name	Qty
1	262-052 2.5	8x144x6 Cylinder	1
2	9001-0119	TW-10 Solid End Pin	1
3	9001-0120	TW-10 Rod End Pin	1
4	815-155	#16 JIC M to #16 ORB M	3
5	.375x16 3.5 Blot	H#3/8X3.5	4
6	.375 Lock Nut	NN3/8	4
7	800-172	#16 JIC JIC ORB Run	1
8	825-155	#16 JIC F to #16 ORB M	1
9	902-003	Pro Regeneration	1

Assembly and Repair, cont.

8" HYDRAULIC CYLINDER

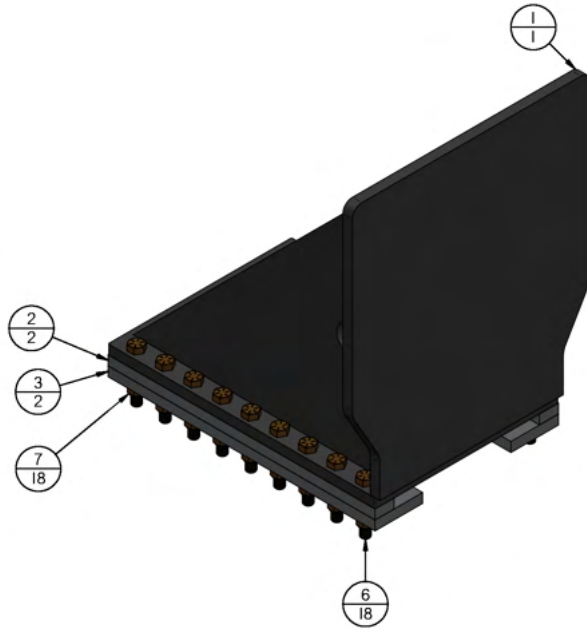


= Purchasable From Timberwolf
Firewood Processing Equipment

Item No	Part No	Part Name	Qty
1	20000-50013	6" Rod - Gland Wiper	1
2	20000-50015	6" Rod - Gland Wear Ring	2
3	20000-50019	6" Bore - Piston Wear Ring	2
4	20000-50014	6" Rod - Gland Seal	1
5	262-053	8x1.44x6 TW-10 Body Welded	1
6	257-699	8x1.44x6 Gland	1
7	257-698	8x1.44x6 Retainer Plate	1
8	262-054	8x1.44x6 TW-10 Rod Welded	1
9	262-147	8x1.44x6 TW-10 Piston Welded	1
10	15-12 Nut	NI-1/2 F	1
11	20000-50018	6" Rod - O-Ring	1
12	625x11 3 Bolt	HH5/8X3	18
13	625 Washer	W5/8	36
14	625x11 Nut	N5/8	18
15	.25 Grease fitting	1/4 Grease Fitting	1
16	20000-50038	6" Bore - Gland Head Seal	1
17	20000-50039	6" Bore - Piston Crown Seal	1

Assembly and Repair, cont.

PUSH BLOCK



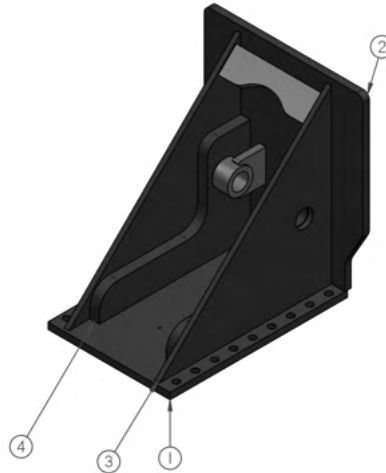
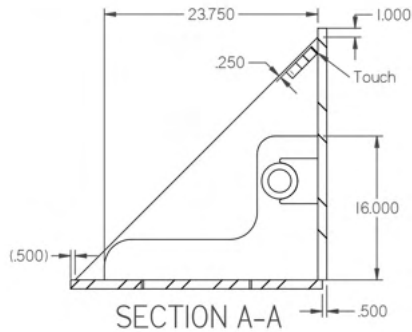
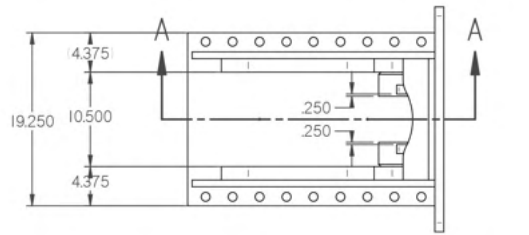
= Purchasable From Timberwolf
Firewood Processing Equipment

Item No	Part No	Part Name	Qty
1	9001-0086	TW-10 Push Block	1
2	9001-0121	TW-10 PB 1"x2" Wear Plate	2
3	9001-0122	TW-10 PB 1" Wear Plate	2
4'	.25 Grease Fitting 90	.25 Grease Fitting 90	2
5'	.25 Grease fitting	1/4 Grease Fitting	6
6	.875x9 5 Bolt	.875x9 5 Bolt	18
7	.875 Lock Nut	.875 Lock Nut	18

Assembly and Repair, cont.

PUSH BLOCK

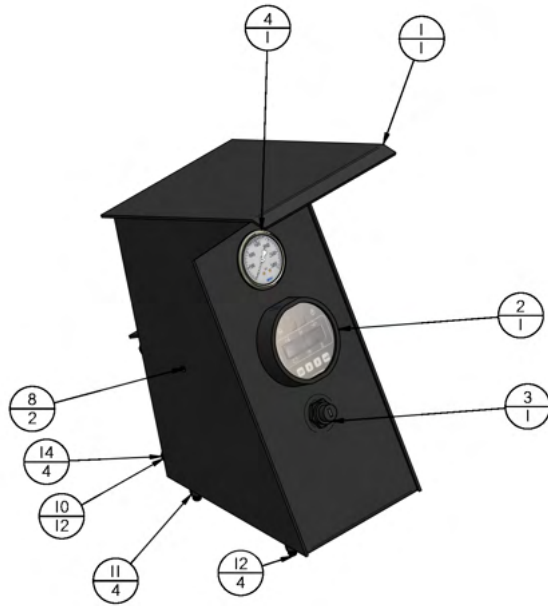
= Purchasable From Timberwolf
Firewood Processing Equipment



Item No	Part No	Part Name	Qty
1	255-689	TW-10 PB Bottom Plate	1
2	255-767	TW-10 Push Block Front Plate	1
3	255-690	TW-10 PB Big Gusset	2
4	255-691	TW-10 PB Cylinder Mount	2
5*	258-306	TW-10 Clevis Spacer	2
6*	258-494	TW-10 PB Tube Support	2
7*	258-595	TW-10 Push Block Top Cross	1

Assembly and Repair, cont.

CONTROL TOWER

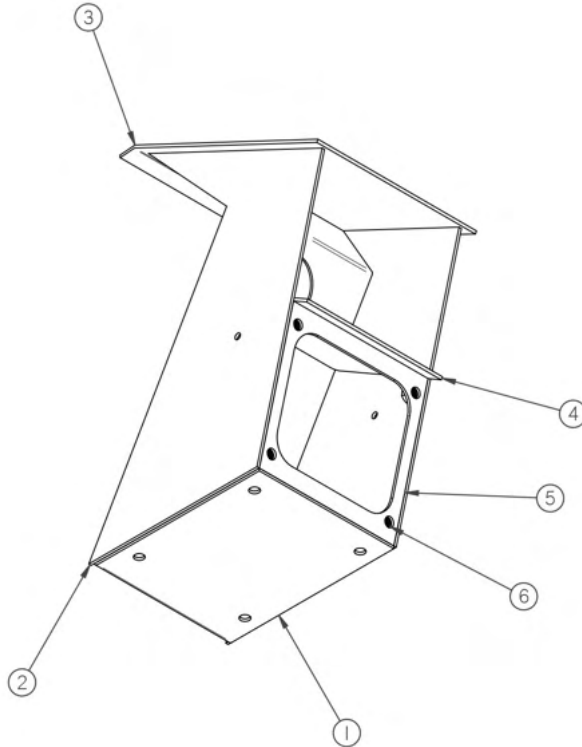



= Purchasable From Timberwolf
Firewood Processing Equipment

Item No	Part No	Part Name	Qty
1	9001-0185	TW-10 HD Control Panel	1
2	Engine Monitoring Unit	Control	1
3	Key Ignition	Key Ignition	1
4	20000-20024	5000 PSI Panel Gauge	1
5*	60000-10031	Cord Grip .25 -38	1
6*	60000-10032	Cord Grip Lock Ring 1/2"	1
7*	60000-10026	Inline Fuse Holder	2
8	60000-10025	Cooler Relay	2
9*	255-660	Wireless Valve Control	1
10	.375 Washer	.375" Washer	12
11	.375 Lock Nut	.375 Lock Nut	4
12	.375x16 1.25 Bolt	3/8"x16 1.25 Bolt	4
13*	9001-0186	TW-10 Control Pannel	1
14	.375x16 1 Bolt	3/8"x16 1 Bolt	4
15*	814-110	#6 JIC M to #4 NPT F	1

Assembly and Repair, cont.

CONTROL TOWER

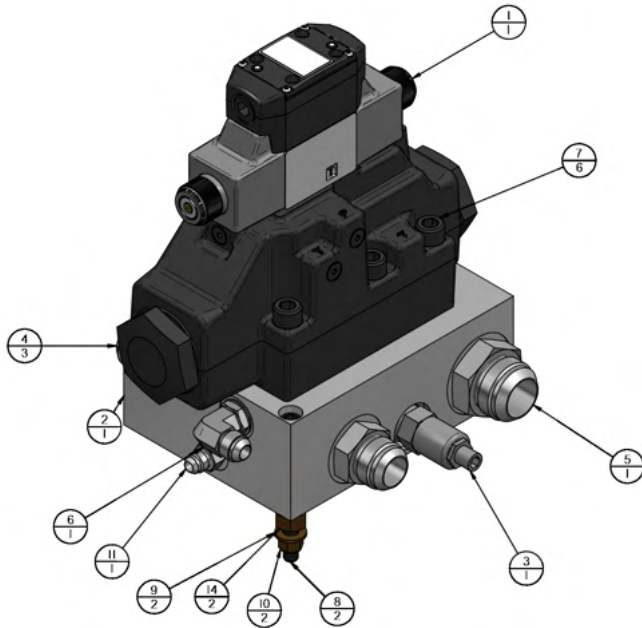


 = Purchasable From Timberwolf
Firewood Processing Equipment

Item No	Part No	Part Name	Qty
1	258-390	TW-10 Control Panel Plate	1
2	258-391	TW-10 Control Panel Side	2
3	258-392	TW-10 Control Panel Top	1
4	258-393	Plate 7X6.125x.125	1
5	258-394	TW-10 HD Control Panel Seal Mit	1
6	.375 Nut	3/8" Nut	4

Assembly and Repair, cont.

AUTOCYCLE

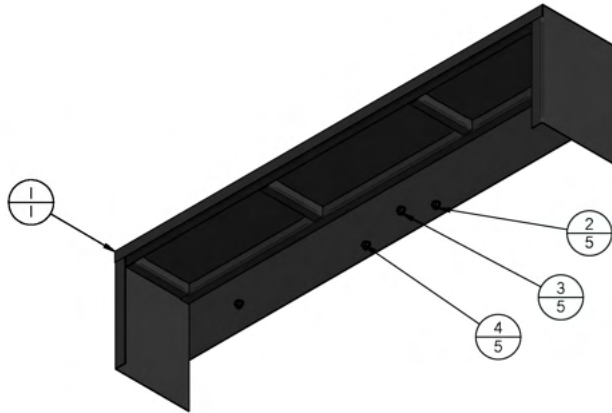


= Purchasable From Timberwolf
Firewood Processing Equipment

Item No	Part No	Part Name	Qty
1	50000-10006	D-08 Valve	1
2	902-002	Aluminum Manifold D08	1
3	50000-10018	Revelan Insert for D08 Manifold	1
4	815-155	#16 JIC M to #16 ORB M	3
5	815-166	#20 JIC M to #20 ORB M	1
6	815-222	#8 JIC M to #8 ORB M 90	1
7	.5x13 3 Socket Head Bolt	1/2"x13 3 Socket Head Bolt	6
8	.375x16 4 Socket Head Bolt	3/8"x16 4 Socket Head Bolt	2
9	.375 Washer	.375" Washer	2
10	.375 Lock Nut	.375 Lock Nut	2
11	815-111	#6 JIC M to #6 ORB M	1
12	800-174	#16 ORB Plug	2
13	800-175	#6 ORB Plug	1
14	.5 Nut	1/2" Nut	2

Assembly and Repair, cont.

FENDER (x2)



= Purchasable From Timberwolf
Firewood Processing Equipment

Item No	Part No	Part Name	Qty
1	9000-0108	Pro HD Fender 09 21	1
2	.5 Washer	1/2" Washer	5
3	.5 Spring	1/2" Spring Washer	5
4	.5x13 1.25 Bolt	.5x13 1.25 Bolt	5

Hose Routing

TW 10 Hose List					
Hose Name	Length	Fitting 1	Fitting 2		Part No
#6 Pressure	36	829-111	829-111	From D08 to Gauge	891-033
#8 Pressure	74	829-122	829-122	From D08 to Tank	892-010
#16 Pressure	43	829-155	829-355	From Pump to D08	895-003
#16 Pressure	116	829-355	829-355	From D08 to Solid End	895-004
#16 Pressure	116	829-355	829-355	From D08 to Rod End	895-004
#20 Suction	60	829-166-S	829-366-S	From 70 GPM to D08	886-008
#20 Suction	80	829-166-S	WC20	From pump to Tank	886-009
	Stight				
	90				



TW-10 Transport

READ PRIOR TO TRANSPORTING - The TW-10 will add significant length to your vehicle when attached. The added length of the conveyor may reduce stability and increase the radius of your vehicle's turns. To prevent accidents, ensure the TW-10 is secure to your vehicle during transportation and be aware of your surroundings.

Ensure no material - like portions of split logs - are left on the TW-10 before transporting. Ensure no one is riding on the TW-10 while transporting.

The TW-10 IS APPROVED to be towed via hitch on public roads. Ensure the braking system and brake lights are functioning properly before transporting the TW-10.

DIRECTLY ATTACH THE TW-10 - Ensure the ball coupling is locked onto the 2" ball hitch coupler. ALWAYS use safety chains when transporting the TW-10, as you would with any trailer being towed. See image for reference to the TW-10's ball hitch coupler.



STORAGE - When stored for 2 months or longer, ensure the fuel tank is empty. Fuel stored in the carburetor can gel and eventually cause issues with carburetor. The TW-10 is made for outdoor use, but you can prolong the life of the machine by storing it indoors.

Troubleshooting the TW-10

ENGINE ISN'T RUNNING PROPERLY/WON'T START

- Ensure the shut-off petcock on the fuel tank is OPEN
- Ensure the hydraulic tank shut-off valve is OPEN
- Operating the TW-10 with the shut-off petcock and/or hydraulic tank shut-off valve CLOSED will cause serious damage to the pump of the machine and may render the machine inoperable

REMOTE CONTROL WON'T WORK

- Turn the transmitter off using the red button and then turn it on again using the green button
- Ensure you are within 200' of the TW-10 while using the remote control to operate
- If the remote control still won't work, see Lodar.com for further assistance

SPLITTING CROOKED LOGS

- If possible, always put the butt end of the log toward the push block
- Square off the ends of the log before splitting
- Splitting crooked logs will often result in uneven splits

MORE QUESTIONS?

- Don't hesitate to contact the certified Timberwolf Firewood Processing Equipment dealer where you purchased your machine from, Timberwolf Firewood Processing Equipment at (607) 307-4029 via phone, or sales@timberwolfequip.com via email.