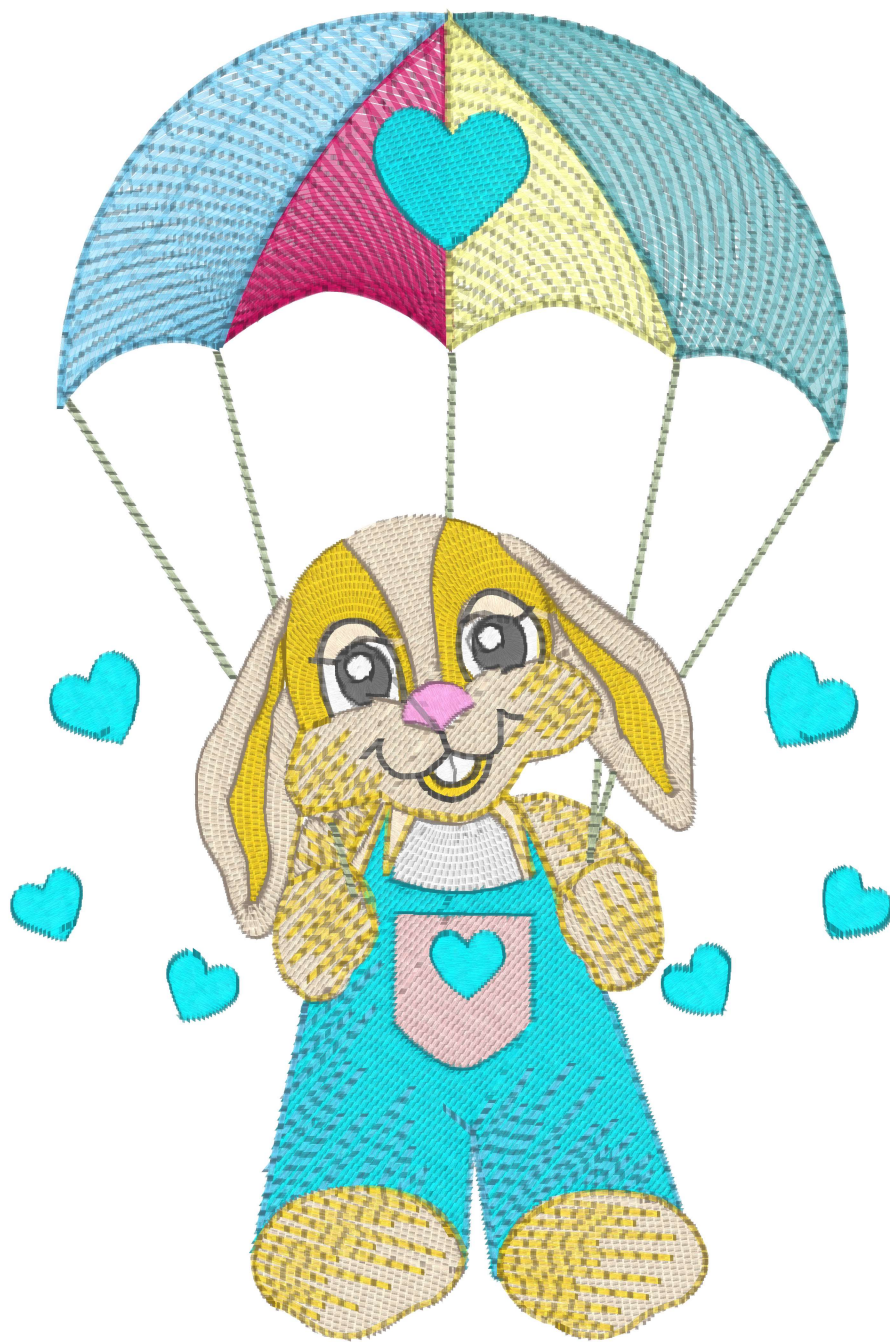


4.59x6.90 inches; 22,932 stitches
14 thread changes; 12 colors

- 1. White
- 2. Seacrest
- 3. Applique
- 4. dark fuchsia2
- 5. Lemon Yellow
- 6. light blue2
- 7. Sky Blue
- 8. sky blue2
- 9. Khaki
- 10. Linen
- 11. Khaki
- 12. Pink
- 13. Dark Gray
- 14. Seacrest



Design Notes: