

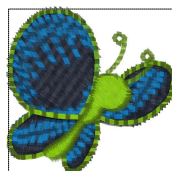
- 1. (PES:60)
- 2. (PES:11)
- 3. (PES:20)

Sd1457_11.art

1.15x1.11 inches; 1,637 stitches
3 thread changes; 3 colors

**ART80
File**

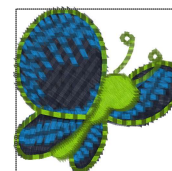
Sd1457_11.art80



- 1. Blue Black (Sul-R:1182)
- 2. Sapphire (Sul-R:1534)
- 3. Avocado (Sul-R:1177)

Sd1457_11.dst

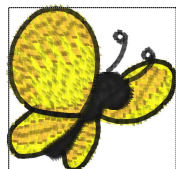
1.15x1.11 inches; 1,637 stitches
3 thread changes; 3 colors



- 1. Blue Black (Sul-R:1182)
- 2. Sapphire (Sul-R:1534)
- 3. Avocado (Sul-R:1177)

Sd1457_11.exp

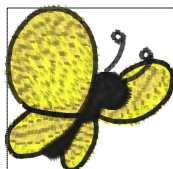
1.15x1.11 inches; 1,637 stitches
3 thread changes; 3 colors



- 1. Yellow
- 2. Light Orange
- 3. Black

Sd1457_11.hus

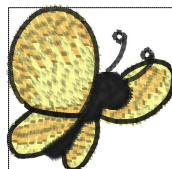
1.15x1.11 inches; 1,637 stitches
3 thread changes; 3 colors



- 1. Yellow (204)
- 2. Gold (003)
- 3. Black (002)

Sd1457_11.jef

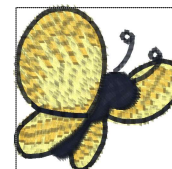
1.15x1.11 inches; 1,636 stitches
3 thread changes; 3 colors



- 1. Lemon Yellow
- 2. Deep Gold
- 3. Black

Sd1457_11.pes

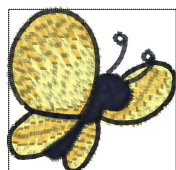
1.15x1.11 inches; 1,637 stitches
3 thread changes; 3 colors



- 1. Lemon Yellow (Sul-R:1067)
- 2. (Sul-R:1260)
- 3. Blue Black (Sul-R:1182)

Sd1457_11.vip

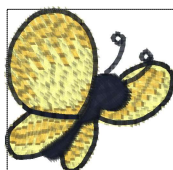
1.15x1.11 inches; 1,637 stitches
3 thread changes; 3 colors



- 1. Lemon Yellow (Sul-R:1067)
- 2. (Sul-R:1260)
- 3. Blue Black (Sul-R:1182)

Sd1457_11.vp3

1.15x1.11 inches; 1,637 stitches
3 thread changes; 3 colors



- 1. Lemon Yellow
- 2. RGB(230,177,50)
- 3. RGB(0,5,21)

Sd1457_11.xxx

1.15x1.11 inches; 1,637 stitches
3 thread changes; 3 colors