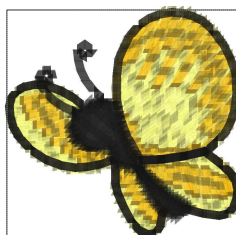




Sd1426_10.jpg



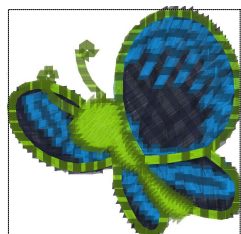
- 1. (PES:60)
- 2. (PES:11)
- 3. (PES:20)

Sd1426_2.art

0.87x0.84 inches; 1,213 stitches
3 thread changes; 3 colors

ART80
File

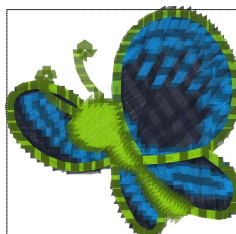
Sd1426_2.art80



- 1. Blue Black (Sul-R:1182)
- 2. Sapphire (Sul-R:1534)
- 3. Avocado (Sul-R:1177)

Sd1426_2.dst

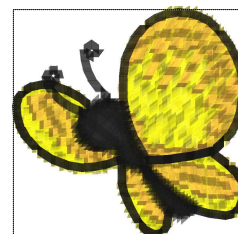
0.87x0.84 inches; 1,214 stitches
3 thread changes; 3 colors



- 1. Blue Black (Sul-R:1182)
- 2. Sapphire (Sul-R:1534)
- 3. Avocado (Sul-R:1177)

Sd1426_2.exp

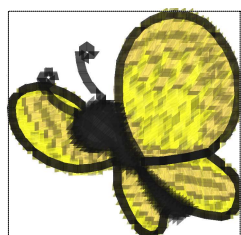
0.87x0.84 inches; 1,214 stitches
3 thread changes; 3 colors



- 1. Yellow
- 2. Light Orange
- 3. Black

Sd1426_2.hus

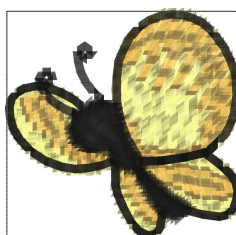
0.87x0.84 inches; 1,214 stitches
3 thread changes; 3 colors



- 1. Yellow (204)
- 2. Gold (003)
- 3. Black (002)

Sd1426_2.jef

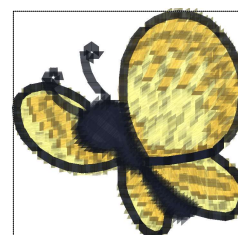
0.87x0.84 inches; 1,212 stitches
3 thread changes; 3 colors



- 1. Lemon Yellow
- 2. Deep Gold
- 3. Black

Sd1426_2.pes

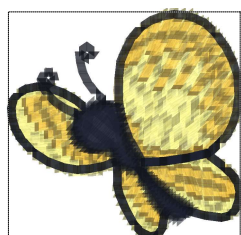
0.87x0.84 inches; 1,214 stitches
3 thread changes; 3 colors



- 1. Lemon Yellow (Sul-R:1067)
- 2. (Sul-R:1260)
- 3. Blue Black (Sul-R:1182)

Sd1426_2.vip

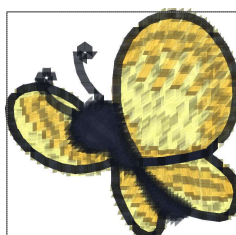
0.87x0.84 inches; 1,214 stitches
3 thread changes; 3 colors



- 1. Lemon Yellow (Sul-R:1067)
- 2. (Sul-R:1260)
- 3. Blue Black (Sul-R:1182)

Sd1426_2.vp3

0.87x0.84 inches; 1,214 stitches
3 thread changes; 3 colors



- 1. Lemon Yellow
- 2. RGB(230,177,50)
- 3. RGB(0,5,21)

Sd1426_2.xxx

0.87x0.84 inches; 1,214 stitches
3 thread changes; 3 colors