

# The Animas River

Additional Google map at:

[https://www.google.com/maps/d/edit?mid=1\\_bOpPwvpuatEtdYtvVMXTQe6QaXzVtQwu&ll=37.05578212168727%2C-108.1594070830078&z=11](https://www.google.com/maps/d/edit?mid=1_bOpPwvpuatEtdYtvVMXTQe6QaXzVtQwu&ll=37.05578212168727%2C-108.1594070830078&z=11)

Version March 2021 **RE-DOWNLOAD ANNUALLY**

Download from: [www.riversports.com/animas](http://www.riversports.com/animas) or request from [wkentford@gmail.com](mailto:wkentford@gmail.com)

Suggestions appreciated. Thanks, [wkentford@gmail.com](mailto:wkentford@gmail.com)

## Animas Below Durango Quick Planner:

note: Animas above Durango is at end of this file.

Mile 0 Launch Dalbetta Park Durango

Mile 13.9 Private Island tiny camp-picnic spot

Mile 15.3 Danger Undercut Rocks

Mile 15.4 Bondad Bridge access for steep carry

Mile 19.4 New Mexico State Line

Mile 19.7 Best Camping (River Left BLM Property)

Mile 20.6 Boat Ramp at RV Camp Animas River

Tico Time RV Park just past state line. 20 Road 2050 Aztec, NM 87410 Call ahead the resort 970-903-0681. Or call owner Robert Holmes 970-946-7549 Car Camping available. Takeout fee unpredictable.

Mile 20.7 Pavilion and boat ramp at tiny RV park

Call or text ahead James 970 422 2171. Probably cheaper.

Mile 22.3 Stacie Ditch metal rebar. Easy scout.

Mile 26.3 contested Small Boat Ramp

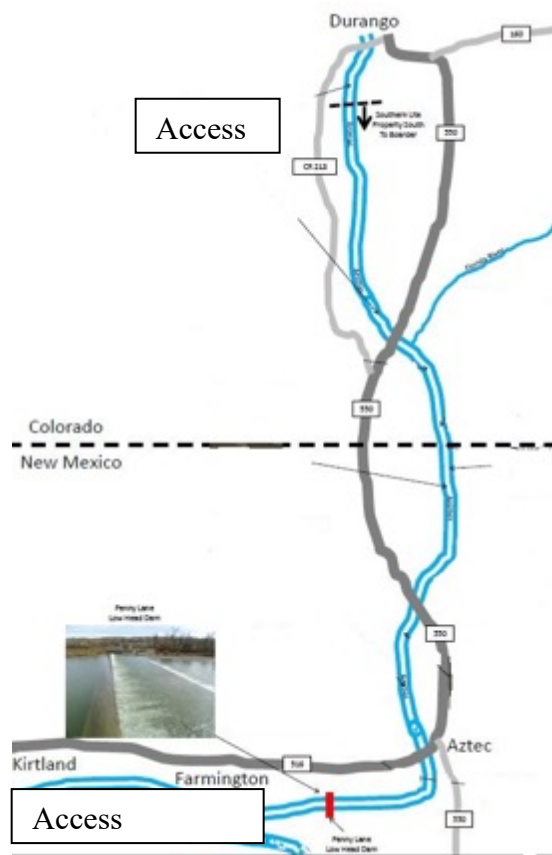
Mile 26.8 Takeout (Coming Fall 2021) Cedar Hill 550 Bridge

Mile 38 Commercial Camping on river (Walk to town & Aztec Ruins National Monument)

Mile 38.7 Aztec Riverside Park

Mile 46.1 (7.4 below Aztec) Penny Lane Feature, Boat Ramp (Formerly ugly dam now boatable!)

Mile 63.0 (24.3 below Aztec). Kirtland Lions Park Boat Ramp (downstream of Farmington)



**Support** river protection organizations such as River Reach, San Juan Citizens Alliance, Animas Riverkeeper and American Whitewater. Rivers rely on dedicated support from river runners like you. Are you a member?

## **General Rules:**

***Please Support Rivers*** In Colorado, the shore and beaches are private property. Trespass by people (or even dogs) aggravates landowners, may disturb wildlife, and threatens our access to rivers. Leave no trace. Carry wag bags or groovers for human waste. We recommend no fires, as this area has been extraordinarily dry in recent years.

Please let us know of landowners willing to have river users stop, stretch their legs, lunch.

## **Float Times:**

Help build time/distance matrix, particularly at lower flows (ie document your mph). Mid-summer Animas loses 300 cfs between Durango and Confluence in Farmington.

Email me your float times. [wkentford@gmail.com](mailto:wkentford@gmail.com)

### **Bakers- Trimble**

2000 cfs 1.5 hours Duckie

### **Trimble - Durango Float times:**

2000 cfs 4-5 hours to Durango 32nd St.

3-4000 cfs 3.5 hours trimble to 32

5000 cfs 3 hours trimble to 32

### **Durango Dalbetta Park- Bondad Float times 15 miles:**

500 cfs canoes 3.5 hours non-stop 5 mph

1000 cfs kayak 2.7 hours

2000 cfs 3 hours by kayak (7mph) raft (5mph?)

### **Durango Dalbetta Park to RV Park/state line camp**

380 cfs about seven hours with novices, SUPs, duckies, and kayaks.

1000 cfs 4 hours long self support kayak

1000 cfs 5.5 hours raft. 2000 cfs 4.5 hours raft

7000 cfs 3 hours raft

### **Bondad- Aztec - Farmington**

200 cfs 1 mph raft (slow water)

500 cfs canoes/kayaks 4 mph, raft 2mph,

1000 cfs raft bondad to cedar hill 1.5 hours

1000 cfs raft cedar hill to FMN westland park 7 hours

4000 cfs 5mph. (Dalbetta to Aztec 7 hours rowing)

4500 cfs Aztec Ruins Road RV park to Lions park in Kirtland took 4.5 hrs

*Want more adventure? Try the San Juan River below the quality waters (putin below Navajo Reservoir) Very rough guide available on request.*

## **Whats needed to help paddle trail:**

1) Permanent Public Access near Bondad Bridge

2) Permanent Public Access near Cedar Hill Bridge

Such as Small Boat Ramp at dead end of CR 2345 river right 0.3 miles above Cedar Hill 550

3) Permanent Public Access Trimble Lane

4) Permanent Public Access Bakers Bridge

## **ANIMAS RIVER BELOW DURANGO** **SECTION: COLORADO**

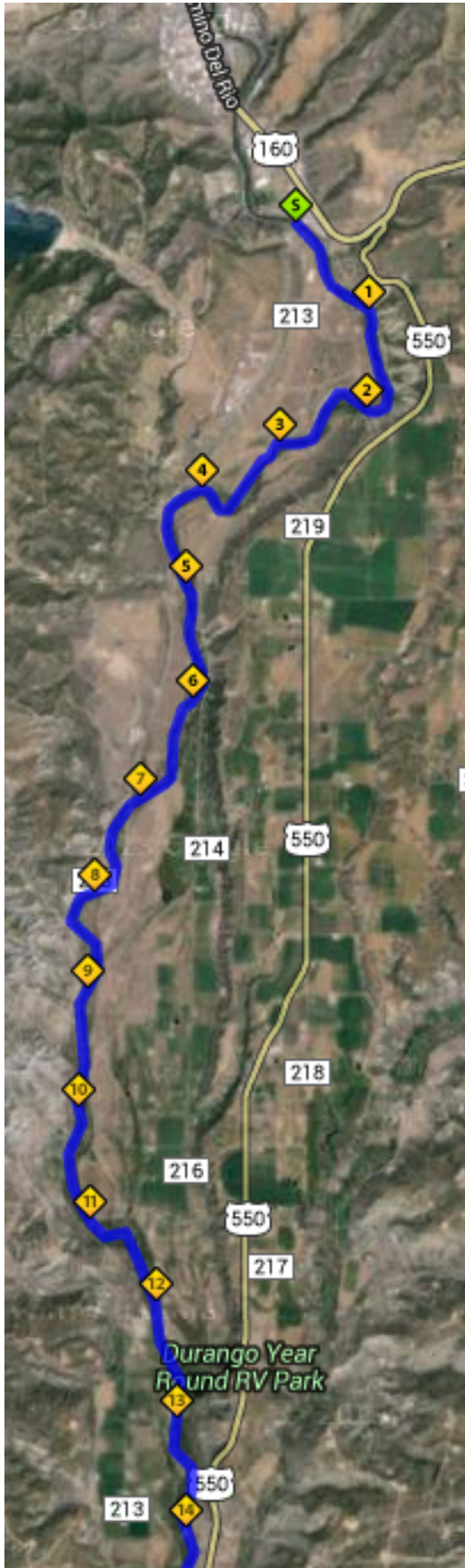
Much of this section cuts through Southern Ute Indian Tribe property. Their care for the river shows with beautiful cottonwood stands and riparian zones. A smattering of private, non-indian property also adjoins the river. River drops 560 feet in these 15 miles. Recommended use: long day trips and overnights for committed paddlers due to lack of public access.

*The Southern Ute Tribe allows recreational boaters (non-commercial) to float through tribal portions of navigable rivers that traverse the Southern Ute Reservation. However, this boating access does not include put-in or take-out on tribal land. Commercial trips have other requirements. The Tribe offers one exception to the put-in / take-out restriction, as follows: Fishermen who have a valid tribal fishing permit and who are engaged in fishing may put-in or take-out small, portable craft on tribal lands. Portable craft are those that can be carried by hand to and from the river, but do not include boats that must be trailered into or out of the river. From: <http://www.southernute-nsn.gov/wrmweb/other-recreation/>*

### **Southern Ute Fishing License Information:**

<https://www.southernute-nsn.gov/natural-resources/wildlife-resource-management/fishing/>

CONTINUED NEXT PAGE



Mile 0  
ACCESS Dalbetta Park (City of Durango Boat Ramp)

Mile 4.5  
Basin Creek and Southern Ute Property/Access for commercial use. Animas La Plata reservoir water may someday be released to downstream users at this point.

Mile 7.1  
Weasleskin Bridge, no access without fishing license and fishing gear.

Mile 13.9  
Tiny Island. Possible campspot or picnic spot.

Mile 15.3 **DANGER** Undercut Rocks- Proven killers. Large sized undercut rocks on river left shore. Especially dangerous at flows below 1500 cfs. Scout or portage recommended. Stay on the inside of the bend (stay on river right).

Mile 15.4  
ACCESS Highway 550 bridge just below "Bondad Hill"  
Takeout river left below bridge with a short steep carry suitable for small rafts, kayaks.

Mile 16.7  
Historical Train Water Tank  
This rail line was called the "Red Apple Flyer" and was in service 1905 until the 1960s. When the freight line from Farmington to Durango was no longer viable, the right of way was sold. For more google "red apple flyer train new mexico" or check out the book "When the Railroad Leaves Town: American Communities in the Age of Rail Line"

Mile 17.4  
Abandoned Train Bridge. Potentially dangerous pilings.

Mile 19.4  
Colorado New Mexico State Line

# SECTION: NEW MEXICO

The New Mexico section of the Animas is a hidden jewel, surprisingly out of view of the road. Rocky bluffs give way to a corridor of Russian Olive trees that buffer the river the remainder of the way to Aztec. Recommended use: long day trips and overnights for committed paddlers due to lack of frequent access.

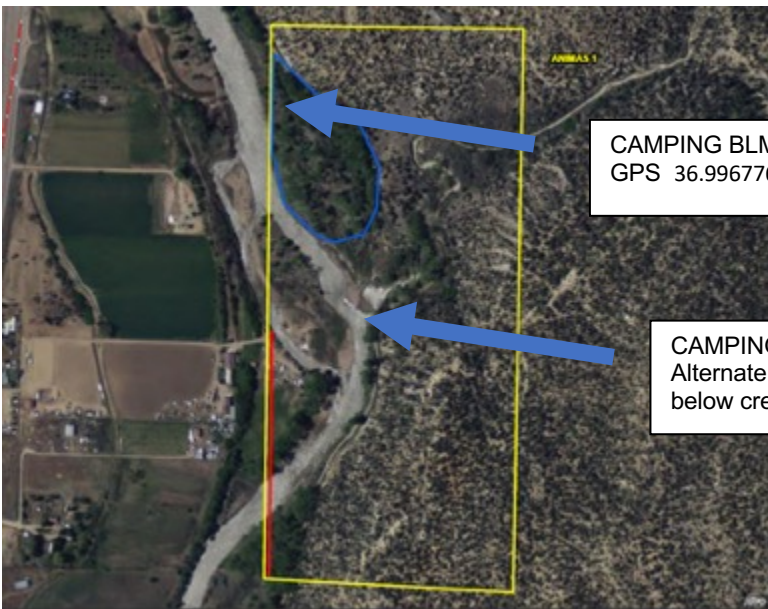
Mile 19.7 CAMPING BLM Property "Animas 1"  
 GPS 36.996776° / -107.864301°

USE a GPS to find! Tough exit, no eddy. Float along left shore. Pull in early near the bottom of flat pool without entering next riffle. Camp located on river left, gas compressor facility directly across on river right. This is the best public camping between Durango to Aztec. Primitive. Also has hike access to a ditch company road, and then to Line Canyon. Alternative camp, but less desirable is inlet/ mouth of the Line canyon.



Colorado

New Mexico



CAMPING BLM Property "Animas 1"  
 GPS 36.996776° / -107.864301°

CAMPING BLM Property "Animas 1"  
 Alternate camping possibility just below creek mouth.

Animas River RV Parks. The first has a boat ramp, the second has a riverside pavilion and slightly tougher road. **BOTH ARE PRO-RIVER RECREATION! THANKS!**

Mile 20.6 ACCESS. Tico Time River Resort just past state line. 20 road 2050, aztec Call first and ask for Robert Holmes. 970-946-7549 or the resort 970-903-0681. Parking price seems to be increasing. <https://fourcornersrvresort.com/>

Mile 20.7 ACCESS. Call/text James Murch 970 422-2171 who owns separate RV park just downstream. This has a slightly tougher road, and a nice pavilion. He is friends with Tico folks, but runs a lower key operation. Likely cheaper.

Mile

## 22.2 Camping

BLM Property "Animas 3" GPS -107.869758, 36.966197

Small marginal camp possibility on river right. Stop early, because when re-launching you will want to be on the other side for recommended scout of diversion dam very close downstream.

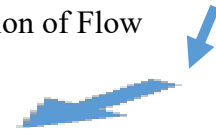
## Mile 22.3

DANGER Stacie Ditch Co. diversion dam

You will want to be on river left for scout and/or portage of ugly metal raft-ripping posts. This 2 foot tall junky dam is frequently run on the far left. To avoid rebar punctures below 1000 cfs, line your boats on river left. Run far left at all levels. The green wall of a Oil/Gas facility is visible high on the ridge on river left.



Direction of Flow



Mile 22.3 Nasty metal raft ripping or worse under 1000 cfs. Above 2000 just stay left you likely won't see any of it.



Mile 22.3 Low water view from river right. Note gas plant on hillside as a landmark. Upright metal posts across entire river.

Mile 22.5 Abandoned bridge  
 Mile 23.8 Roadbridge 2290  
 Mile 24.5 Old Bridge abutments

**CONTESTED ACCESS Mile 26.3 Abandoned Roadbridge and water flume at dead end of CR 2345** This narrow road provides a tricky trailer friendly boat ramp. On river right 3 feet below old bridge. Don't park where you might block other trailers! Secluded, quiet. This is disputed land ownership.

**ACCESS Mile 26.9 Cedar Hill 550 Bridge**  
 2021: walk down river left between road and old bridges. 300 foot carry suitable for very small rafts, kayaks, but 2345 boat ramp is better.  
 Coming Summer 2021: Boat Ramp thanks to SanJuanCounty, NM. Be sure to thank them!



Mile 28.6 Aztec Ditch Diversion Dam potential rebar danger, don't fall out. House on river left.



Mile 30 appx Butch Keller backyard ACCESS 20B Road 2645 Aztec

Mile 32.2 creek joins river from river right

Mile 33.6 BLM Property "Animas 8" -107.957486, 36.880837

A quiet and secluded spot, but tough to find without GPS. Very Small camping or picnic possibility is probably best on river left or on the island. But may be possible on river right at the creek confluence. Red line on photo is disputed property. Watch for BLM property signs just above the island river left (or just stop on the island!) This is in a non-descript river section, so perhaps use GPS to help find it.



Direction of flow

Mile 34.5 Farmers Irrigation District, FMN Diversion Dam

This 5 foot tall smooth ramp drop is commonly run in the middle. Shallow below 1000cfs. Dory needs 2000+. Fun wave center at 4000. Big enough drop to be scary looking. Scout or Portage from the brink of drop on river left at flows below 1000 cfs. Shallow for long hardshell kayaks below 800 cfs.



Mile 34.7 PREARRANGED CAMPING Contact homeowner Rod Baade (505) 330-9376 a day in advance! This is a wonderful backyard camp, right on the river, and far enough from the house that you don't feel like you are imposing too badly. Rod works at Jacks Plastic Phone: 505-334-8748 (boater friendly). His brother Errol Baade is manager at Jacks Plastic.





Mile 37.7 Trailer launch river right just below footbridge at Martinez Lane, Aztec

**Mile 38 CAMPING** River Right. Ruins Road RV park has decent tent camping along the river. Camp there for a \$15/night fee per tent. The site has city water and a porta toilet, no showers. Folks could just stop and go to the office up the hill to pay for their site. Phone is [505-334-3160](tel:505-334-3160), email is [rrvp1@sisna.com](mailto:rrvp1@sisna.com) Easy walk to town for dinner, or to Aztec Ruins National Monument!

Mile 38.5 550 Bridge

Mile 38.7 Aztec Riverside Park Landing. Takeout for small craft.

## **SECTION: AZTEC- FARMINGTON**

Establishment of access in this zone is due to the River Reach Foundation, a private non-profit organization established in 1986 to promote and protect the unique resource of the San Juan and Animas rivers. River Reach works in cooperation with the Cities of Aztec, Bloomfield, Farmington, and San Juan County. Frequent public access allows for varied use.

Mile 38.7 (Mile 0) Aztec Riverside Park Landing. Launching for small craft.  
Also, trailer launch river right just below footbridge at Martinez Lane, Aztec

Mile 0 Aztec Ruins Trail Side Excursion <http://www.nps.gov/azru/index.htm>  
Gateway trail connection to Aztec Ruins. The path follows a section of the Old Spanish National Historic Trail, the 1000 mile course that pack mules followed from Santa Fe west to Los Angeles in the 19<sup>th</sup> century.

The miles below Aztec are remarkably remote in feel. Pleasant float.

**WARNING!** There are many fallen trees that create dangerous strainers in this section. While easy for experienced paddlers to avoid, you must keep a close eye on anyone with marginal skills. Turn your craft and paddle away!

Go Adventures in Aztec rents rafts and Tubes.

**NOTE:** Many Farmington Boat Ramp maps have the wrong mileages. This guide is correct. Find updated Farmington maps at <http://riverreachfoundation.com/>



Mile 7.4 ACCESS (46.1 from Durango Dalbetta)  
 Penny Lane Boat Ramp  
 Easy trailer friendly boat ramps available above and below dam. March 2017 the Penny Lane dam modification was completed! Designed for safe boating in center channel. Easy scout river left.

<http://www.fmtn.org/639/Water---Penny-Lane-Low-Head-Dam-Modifica>

Penny Lane Before



Mile 7.4

Penny Lane Diversion Dam used to be a proven killer, now is reconfigured for safe boating. ACCESS boat ramp river right. Designed for safe boating in center channel. Easy scout river left.

River left may be nasty at some water levels due to sticky hydraulic, so run center.

Mile 12.2 Farmington Museum visible from river. Nice hangout for the shuttle driver?

**HIGH WATER DANGEROUS** (too low) BRIDGE JUST BELOW HERE. Runnable below 4000cfs with about three feet clearance water to bridge. 5000 cfs has 30 inches clearance. Above 5000 LIKELY MANDATORY PORTAGE

Mile 13 Animas River Park Landing ACCESS Best for raft trailers.

Mile 13.4 Tucker Ave KAYAK ACCESS ¼ mile walk is closest kayak access to Farmington Whitewater Park. Nice play waves followed by ½ mile of very small drop features



Eight miles of Riverfront walk bike trails begin in this area.  
<https://farmingtonnm.org/listings/animas-river-trails>

Mile 13.6 Willet Ditch return has a powerplant river left, and strong currents. Avoid outflow!  
Mile 14 Boyd Park River Right. Across river is ACCESS. Fair Trailer access on river left above miller Bridge accessed by Hydro Plant road.

Mile 16.6 Confluence with San Juan River

Mile 17.6 Old Diversion Rubble Dam High was rebuilt in 2018. High water >2000 run left, at lower water ~1000 run was center. Dam seems to collect wood.

Mile 19.3 Westland Park Landing ACCESS Hard to find tucked back in neighborhood because you can not see the river from the parking lot. Lift cable for marginal trailer access to water (trailers at high water only. Good canoe access)

Section here to Kirtland is one of the prettiest, as it is up against the cliffs.

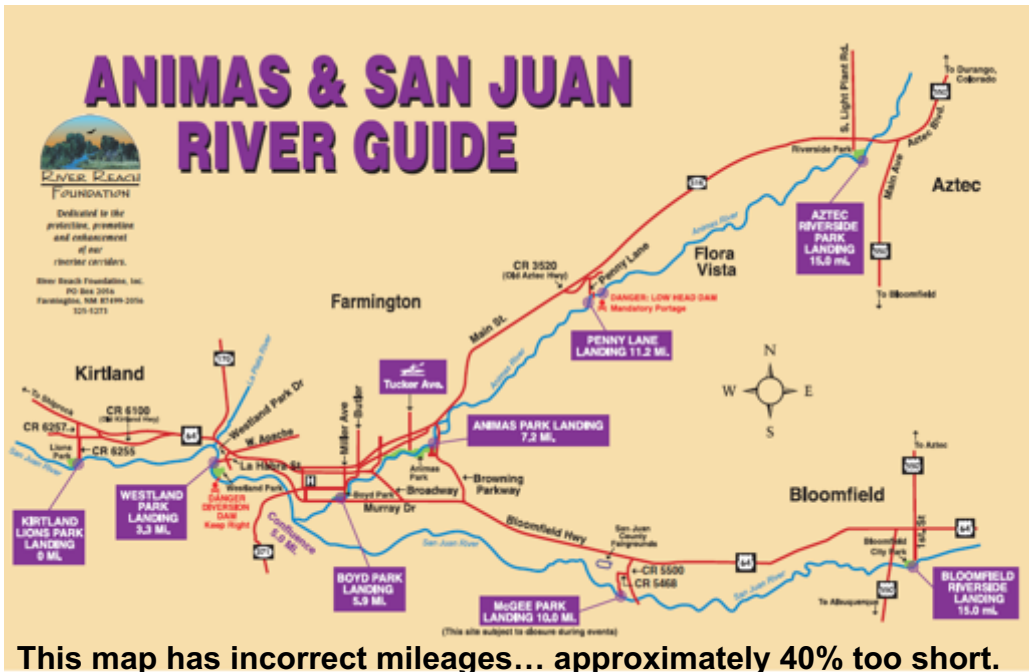
Mile 24.3 (Mile 63.0 from Durango Dalbetta) Kirtland Lions Park Landing ACCESS Good Boat Ramp for trailers. Picture is very low water. High water one boat at a time to ramp.



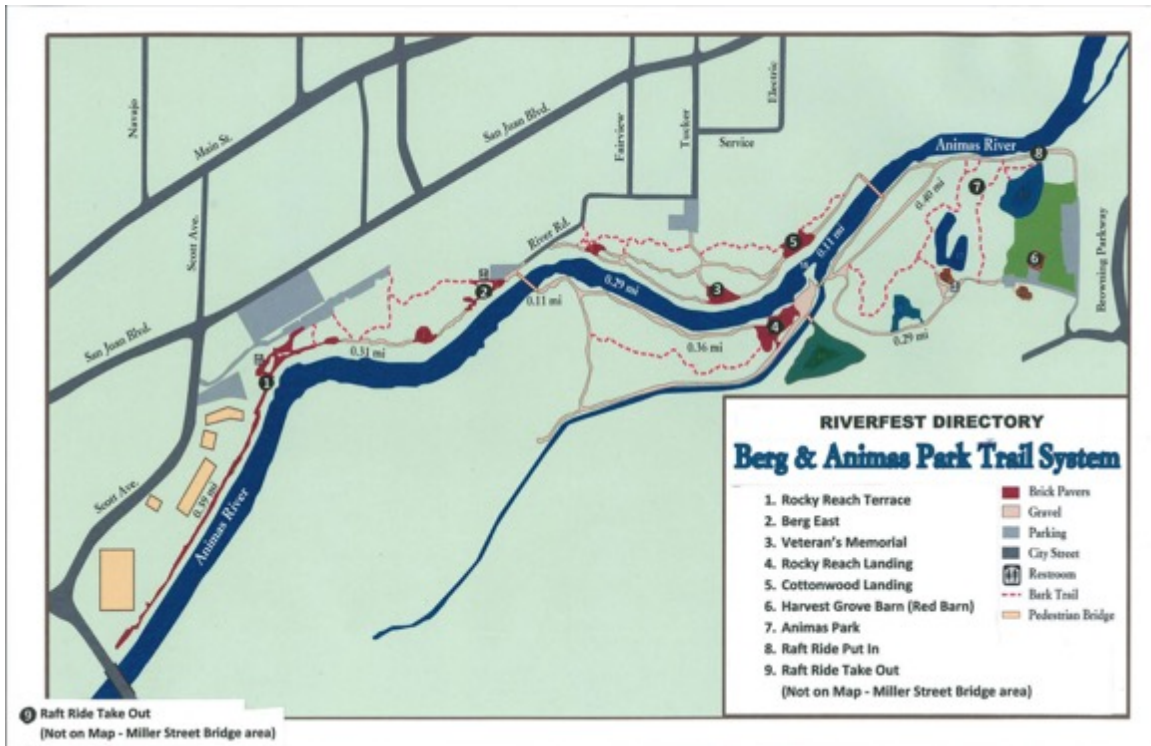
Below this takeout are two large and very unfriendly large dams (appx 20 feet tall) .

Find updated Farmington maps at <http://riverreachfoundation.com/>

San Juan River mile by mile from Navajo Dam to Farmington available from Kent Ford.  
 wkentford@gmail.com



This map has incorrect mileages... approximately 40% too short.



## **ANIMAS RIVER ABOVE DURANGO PADDLE TRAIL BETA GUIDEBOOK**

### **SECTION: ABOVE DURANGO**

This flat, meandering section is a beautiful float at high water levels. Above Trimble Lane there are a few Class II rapids. At low water levels boaters often underestimate the time required. Recommended use: long day trips for committed paddlers due to lack of frequent access.

Mile 0

Bakers Bridge No public access.

Mile 1.1

Braided river channel due to gravel quarry

Mile 5.6

Watch for Golf Balls.

Mile 6.4

Trimble Lane ACCESS. Access in jeopardy due to development plans. Help work for continued access.

(at 2000 cfs 5 hours to Durango 32<sup>nd</sup> St.)

(at 3-4000 cfs 3.5 hours to Durango 32<sup>nd</sup> St.)

Mile 7.2 Unsure location

Jim Hanks diversion Dam Danger

<http://www.durangoherald.com/article/20120818/NEWS01/708189954/0/20120818/Animas-culvert-sucks-in-Calif-tuber>

Mile 10

Ed & Patti Zink Wetlands banking project

<http://www.animasriverwetlands.com/>

Mile 12.6

Glider Park

Watch low flying tow planes and gliders land right next to you!

Mile 15

United Campground

Mile 16.6 (0)

Oxbow Preserve (City of Durango) ACCESS

Mile 17.9 (1.3)

33<sup>rd</sup> Street Boat Ramp

## **SECTION: DURANGO**

Progressively more difficult whitewater begins at 32<sup>nd</sup> street. Most rapids are class II except Smelter Rapids at Whitewater Park, which is a vigorous Class III. Add a level of difficulty above 2500 cfs. Frequent public access allows for varied use.

Mile 0 (18.0 from Bakers Bridge)

33rd Putin ACCESS Boat ramp in neighborhood

Mile 0.5 (18.5 from Bakers Bridge) (1.7 from Oxbow Park)

29th Putin ACCESS

Mile 0.7 Fairgrounds/Recreation Center (near the Demon foot bridge)

Mile 1.7 (19.7) Main Street Bridge

Bridge Pilings are a hazard. Focus!

Mile 1.9 (19.9)

Discovery Museum for kids and adults.

Mile 2.4 (20.4) 9<sup>th</sup> Street Bridge

9th St ACCESS Boat Ramp

Mile 2.7 (20.7) Off Leash Area (at Lightner Creek)

Old superfund site on the river right is now a dog park.

Mile 3.2 (21.2) Whitewater Park and Smelter Rapids

3.5 (21.4) Santa Rita Park (across from the ALP intake)

Mile 3.5 (21.4)

Animas La Plata Pump intakes. The "last of the Bureau of Reclamation water projects" Project was built over boater and environmental objections because it satisfies Indian Water Rights. The pumps can divert 225 cfs in the summer.

Mile 4.4 (22.4)

Four Corners Riversports Boating Equipment

BMX park has boating access.

Mile 5.7 (23.7)

High Bridge ACCESS Boat Ramp

Access by Humane Society end of WalMart parking lot.

Good trailer access for low water levels.

Mile 7 (25)

Dalbetta Park ACCESS Boat Ramp

This park was donated to the City of Durango by a family in 1999 appx!