

SKU: VMM

SANITARY BUTTERFLY VALVES CLAMP AND WELD END

Applications

Used in the food-processing and pharmaceutical industries due to their great versatility, their sanitary condition, and their low cost.

Description

Butterfly valves are opening, closing and regulation valves (depending on their handle). Their handles are interchangeable and operated with pneumatic or electric actuators. Their internal polishing is sanitary.

Technical information

Available materials:
Connections and structure: AISI 304
Seats: silicone

Available connections:
Tri-clamp
Weld ends

Available sizes in permanent stock:
1", 1 1/4", 1 1/2", 2", 3" and 4"
Other sizes available on request:
4 1/2" - 8"

Maximum working pressure:
10 bar

Maximum working temperature:
Silicone Seat: 250°

Internal polishing:
Ra \leq 0,6 μ m



Butterfly valve clamp connection,
with three point pull handle



Butterfly valve clamp and weld end connection,
with three point pull handle

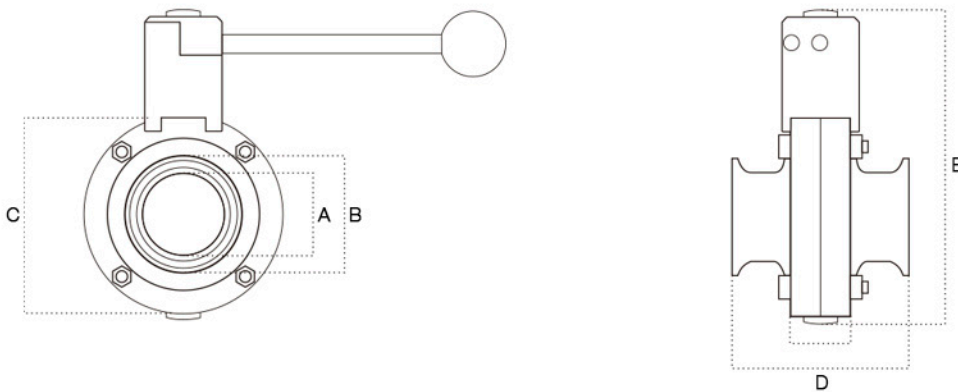
SKU: VMM



JEKLO
STAINLESS STEEL

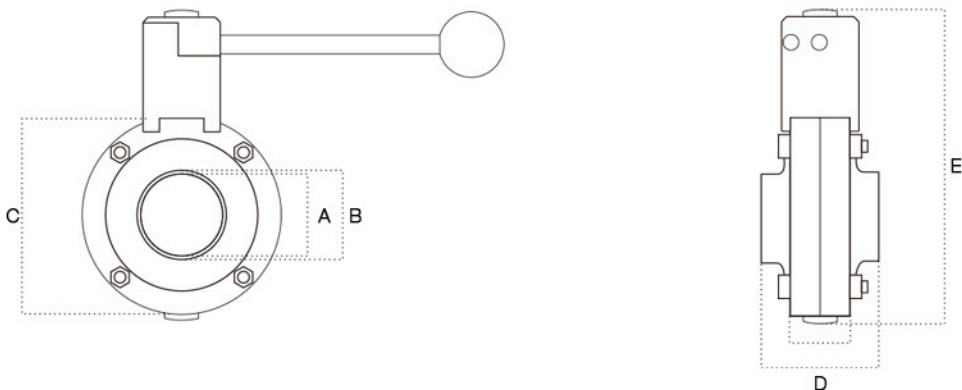
SANITARY BUTTERFLY VALVES CLAMP AND WELD END

Available dimensions* (mm) with clamp connection



Name	A Ø int. clamp	B Ø ext. clamp	C	D	E
1"	22,4 mm.	50,5 mm.	78 mm.	66,1 mm.	124,4 mm.
1 1/4"	28,1 mm.	50,5 mm.	78 mm.	66,1 mm.	126 mm.
1 1/2"	35,1 mm.	50,5 mm.	86 mm.	70,2 mm.	133,5 mm.
2"	47,8 mm.	64 mm.	102 mm.	76,2 mm.	148,8 mm.
3"	73,2 mm.	91 mm.	128 mm.	84,1 mm.	179,5 mm.
4"	98,6 mm.	119 mm.	154,1 mm.	104,2 mm.	207,5 mm.

Available dimensions* (mm) with weld end connection



Name	A Ø int.	B Ø ext.	C	D	E
1"	22,4 mm.	25,4 mm.	78 mm.	50,2 mm.	124,4 mm.
1 1/4"	28,1 mm.	31,8 mm.	78 mm.	- mm.	126 mm.
1 1/2"	35,1 mm.	38,1 mm.	86 mm.	50,2 mm.	133,5 mm.
2"	47,8 mm.	50,8 mm.	102 mm.	52,1 mm.	148,8 mm.
3"	73,2 mm.	76,2 mm.	128 mm.	- mm.	179,5 mm.
4"	98,6 mm.	102,6 mm.	154,1 mm.	- mm.	207,5 mm.

*For other dimensions, please ask your account manager.