

Supernal 3F Rail Instructions

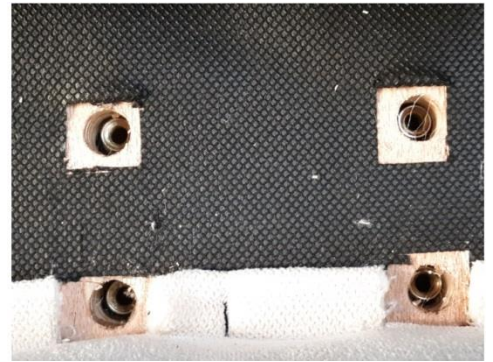
1. Under bed measure from the head of the bed to holes under the fabric. (Hole one is approximately 14 ½” and hole two is approximately 17”)



2. Still under the bed measure from side of the bed to holes under fabric. (Hole one is approximately ½” and hole two is approximately 2”)

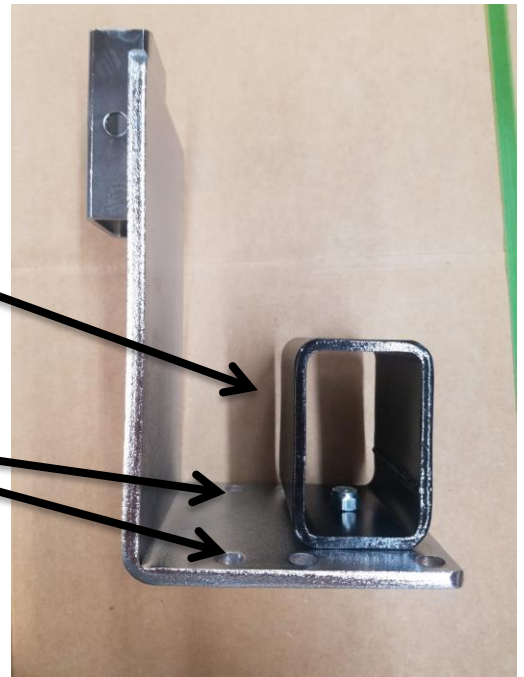


- Cut fabric to expose the holes. Once holes are exposed, you are now ready to place the rail bracket to the bed.



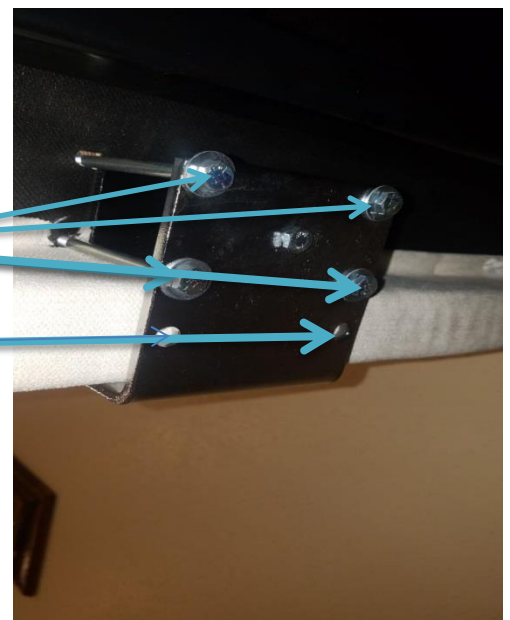
- Picture of bracket. Please note that black rail block is placed under the bed.

- Also note, these holes are not to be used.



- Bolts are placed at the bottom of the rail bracket going up. (Do not over tighten)

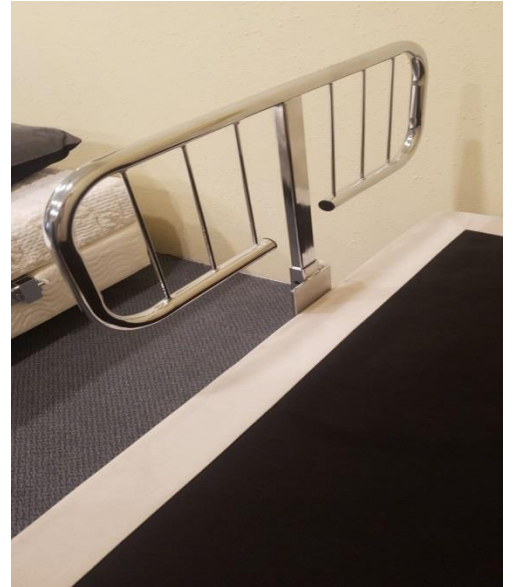
- Again please note do not use these holes.



8. Finished look once the bracket has been installed.



9. Finish look!



10. Reference picture if bed was purchased with rails.

