



Safety Information

⚠ This symbol identifies a **WARNING** or **CAUTION**:

General Use Safety

- ⚠** INJURY may result from improper use or improper installation of bed accessories. Consult Med-Mizer® for compatibility, proper installation and use instructions.
- ⚠** Use only bed accessories and bed replacement parts supplied or approved by Med-Mizer® for this bed. Third party accessories and replacement parts that are not approved by Med-Mizer® may result in personal INJURY or equipment damage.
- ⚠** Med-Mizer® recommends a 12 month preventive maintenance program on all of its products including accessories. Failure to inspect all welds, pins, fasteners and functionality of accessories can lead to personal INJURY or equipment damage.

Applicable Bed Models

- EX8000 – RetractaBed Series – AllCare Series

Installation Kit Contents

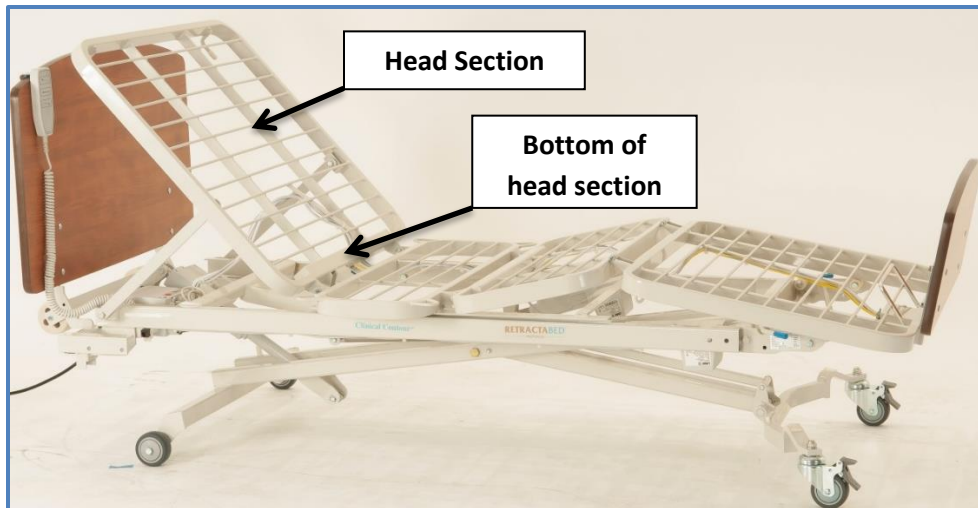
QTY	PART #	DESCRIPTION
1	Rail	Right Up/Down Rail Assembled
1	Rail	Left Up/Down Rail Assembled
8	6812	5/16-18 x 1 ¾ Carriage Bolt
8	6218	5/16 Split Spring Washers
8	6220	5/16 – 18 Acorn Nut
8	6075	5/16 SAE Zinc Washer
4	10279	Zinc Installation Bracket

Tools Required

- 9/16 Wrench

Assembly

- Center the rail mount 10.5" from the bottom of the head section to determine the location of the Up/Down rail.
Non-Expandable bed pictured below.



- Place the UD rail assembly next to the head section sleep and measure 10-inches from the middle of the rail mounting bracket to the bottom edge of the head section facing the foot section. On an expandable sleep surface bed, Rail mounting bolts should straddle the 3rd sleep surface loop of the slide when counting from the base of the head section.

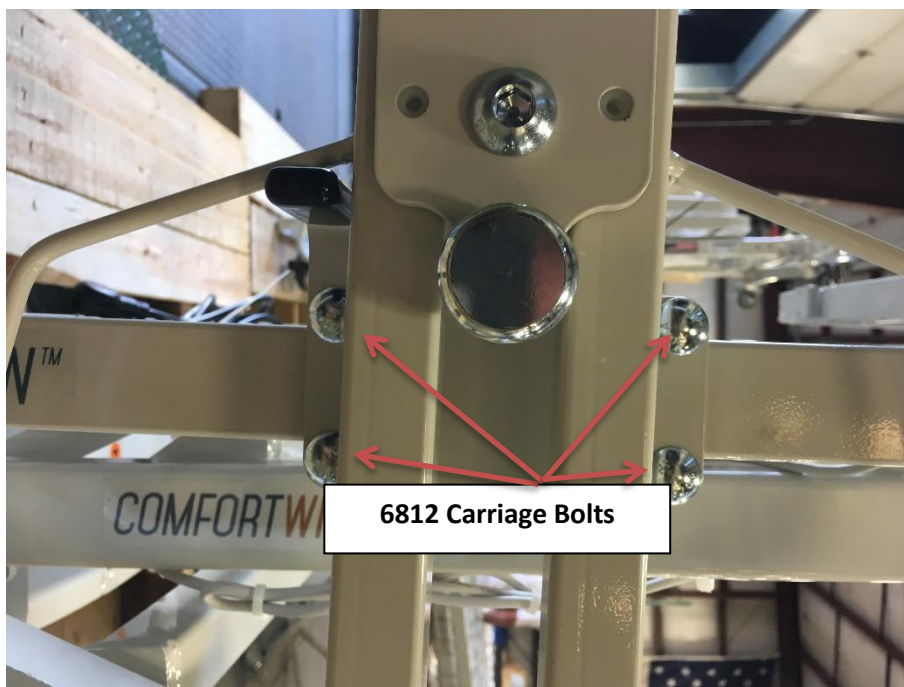
Notice: When rails are equipped with embedded controls, the controls should be towards the bottom of the head section. Pictured below is a left up/down rail.

If the rail is not equipped with controls, the left and right rails can be determined by the location of the stop as shown in the image in the bottom right. If the stop is to the right of the center of the rail, it is a left rail. If to the left, it is a right rail.

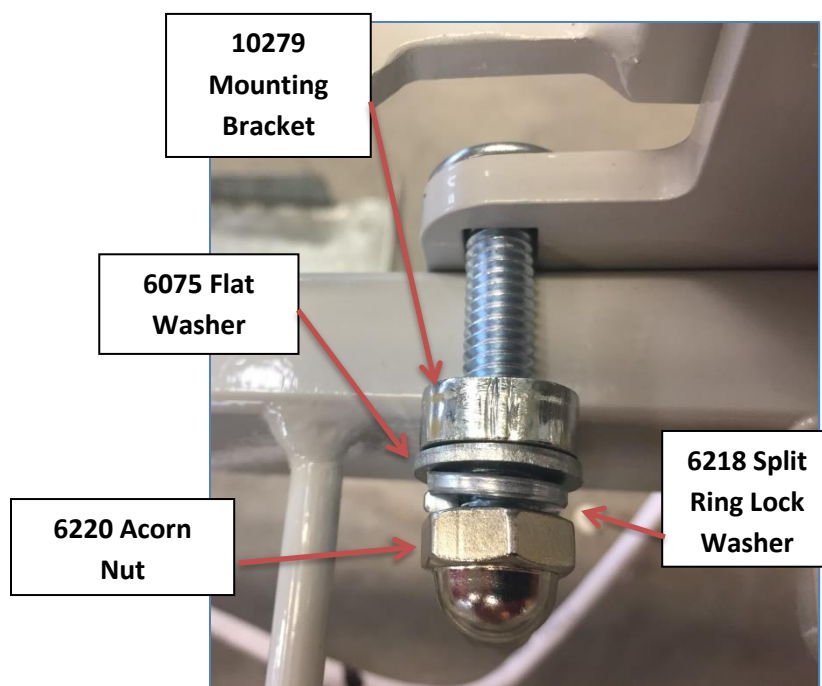
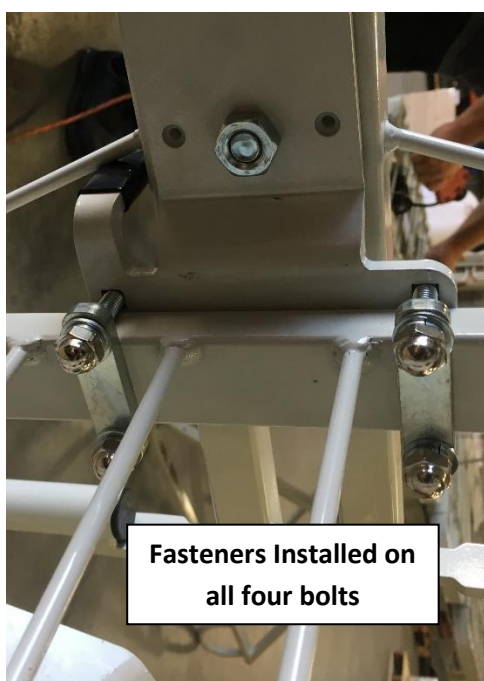
Notice: When rails are not equipped with controls, the left and rights can be used interchangeably as the only difference is the location of the stop.



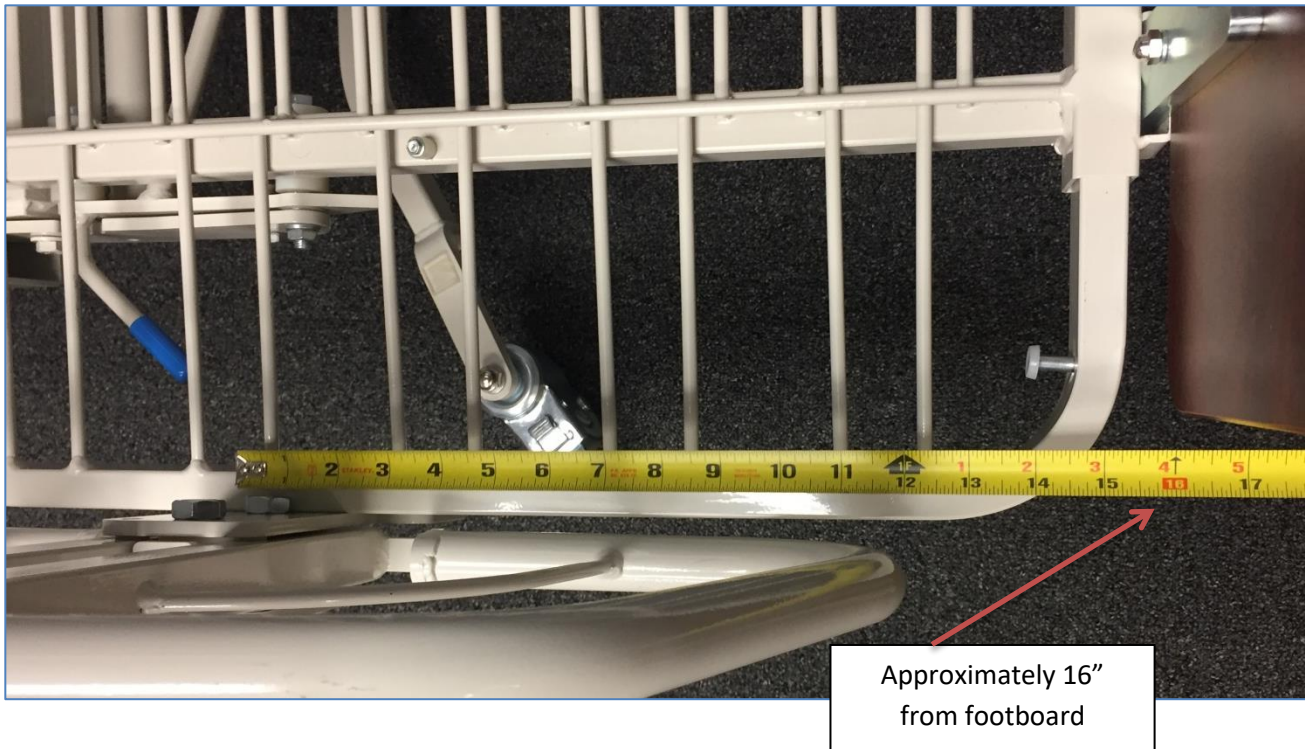
3. Install the 6812 carriage bolts through the front of the rail, bolts will go above and below the sleep deck tube.



4. On the opposite side of the tube install fasteners to each carriage bolt in this order: 10279 (Mounting Bracket), 6075 (Flat Washer), 6218 (Split Ring Lock Washer), and 6220 (Acorn Nut).



5. Using a 9/16 wrench, firmly tighten each nut. Make sure the split ring lock washer is completely flat.
6. When installing a UD rail at the foot measure 16" from the footboard to the center of the rail and repeat steps 3 through 5.



Instructions for Use

1. Rail can be raised in the up position by pulling up until you hear the locking mechanism. To lower rail locate the zinc pull knob and pull out, the rail will then lower into the lowest position.



Locked in Up position



Pull knob towards you and lower rail



Lowered position