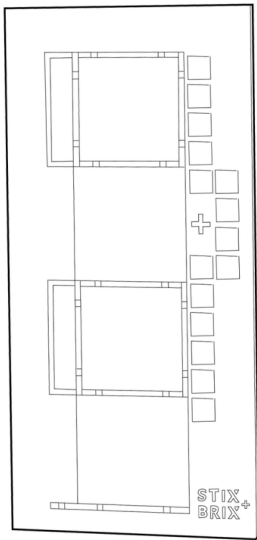


ECO-HOUSE

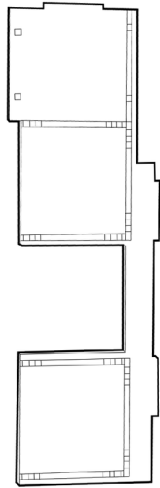


START HERE

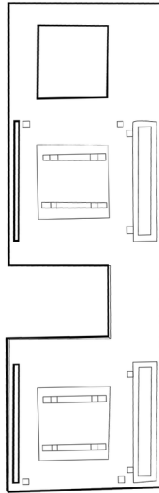
MATERIALS + TOOLS



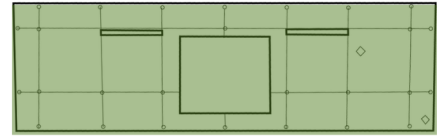
BASE



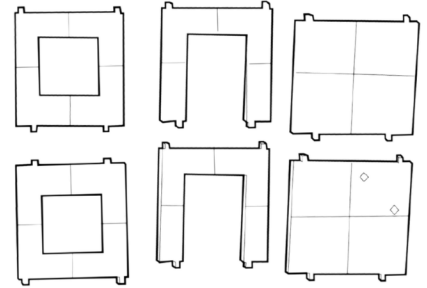
SECOND FLOOR



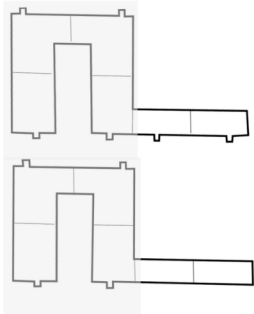
ROOF



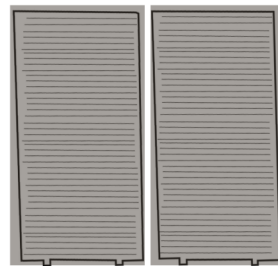
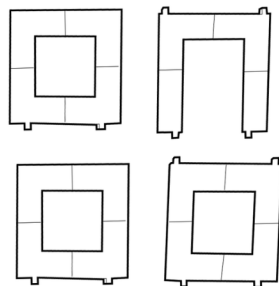
GREEN WALL



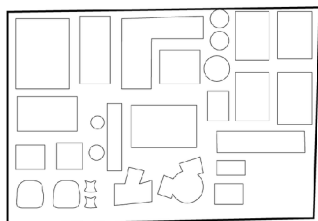
GROUND FLOOR WALLS



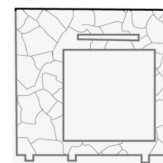
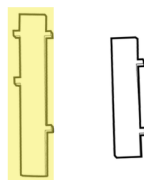
SECOND FLOOR WALLS



OVERHEAD DOORS



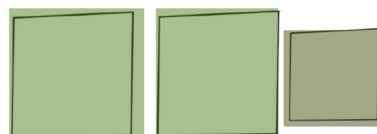
RAMP + RAILING



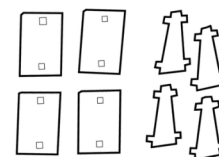
STONE WALL



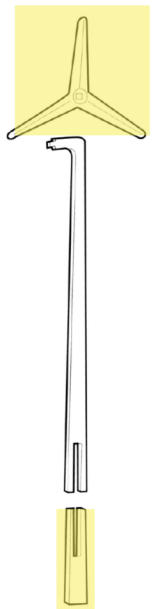
PAINT BRUSH + PAINT + STICKERS



TURF + BUSHES

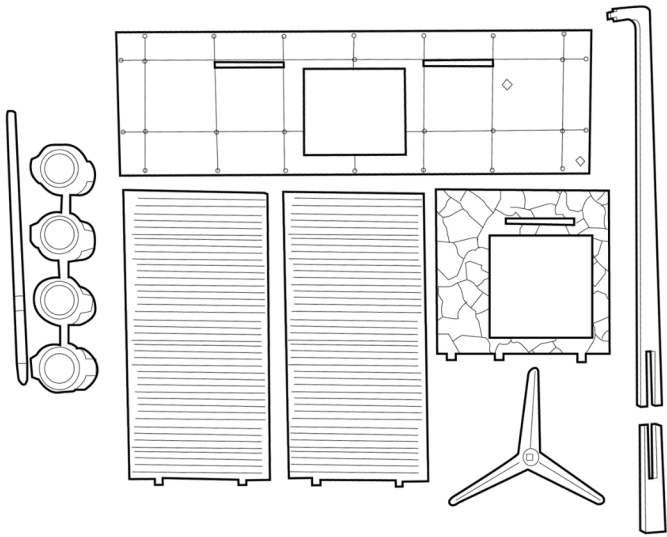


SOLAR PANELS



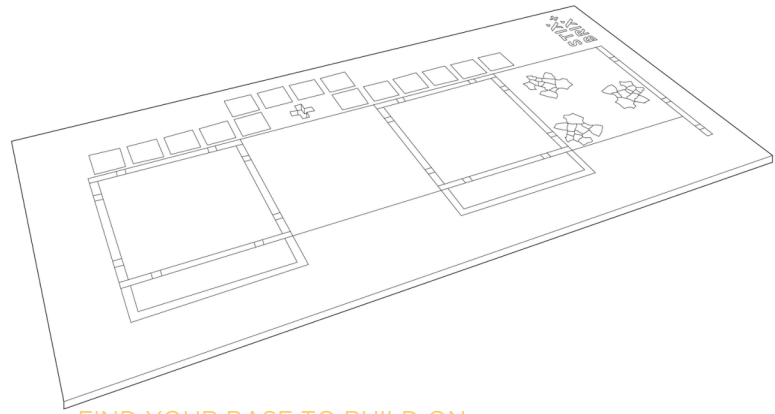
WIND TURBINE

1



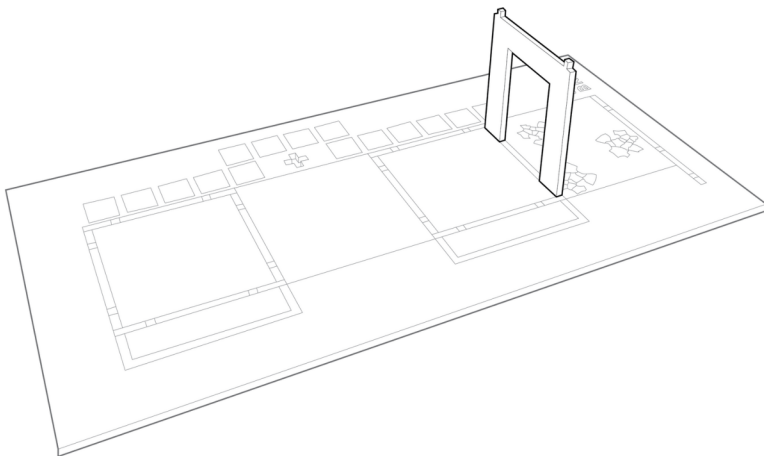
PAINT THE WOOD PIECES YOU WOULD LIKE.
LET ALL THE PIECES DRY.

2



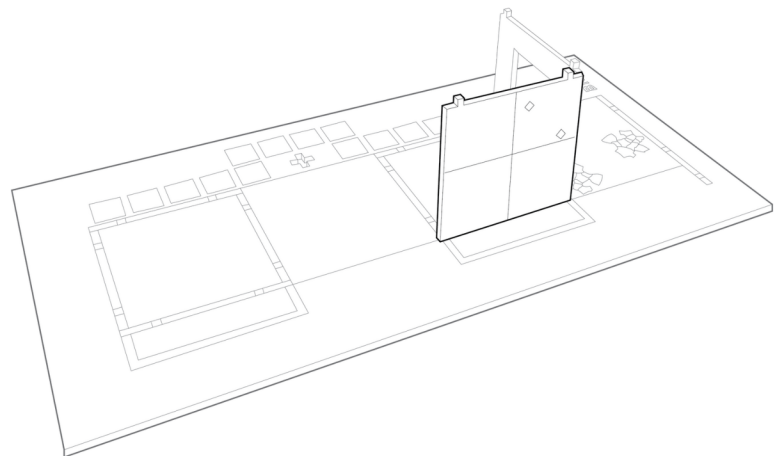
FIND YOUR BASE TO BUILD ON.

3



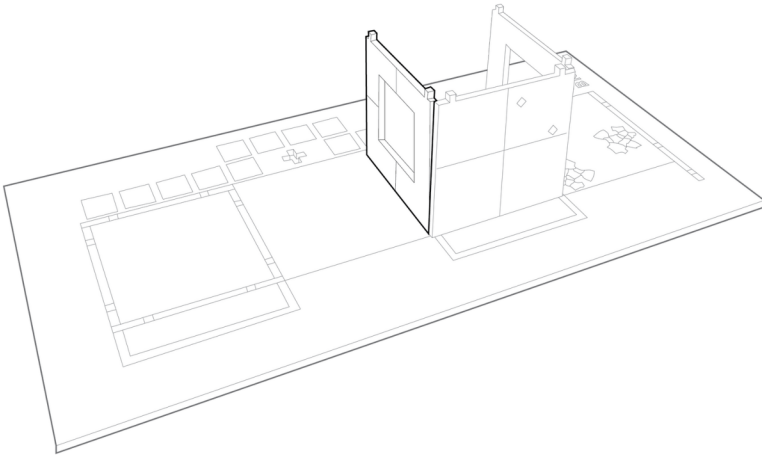
LOCK-IN A WALL WITH A DOOR INTO THE BASE.

4



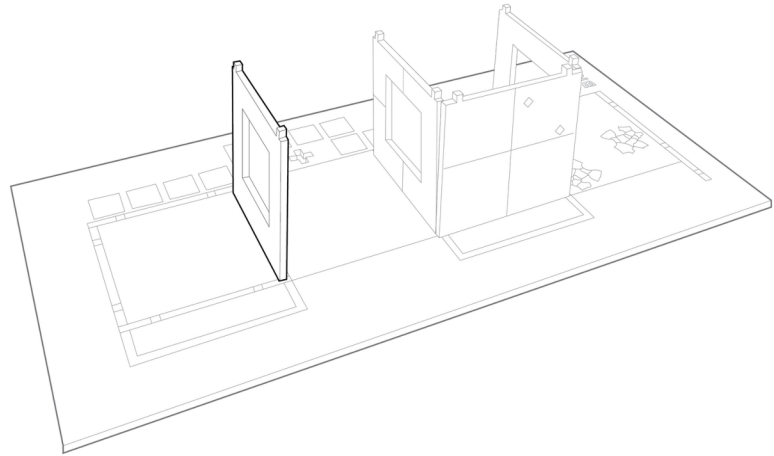
LOCK-IN THE SECOND WALL INTO THE BASE.

5



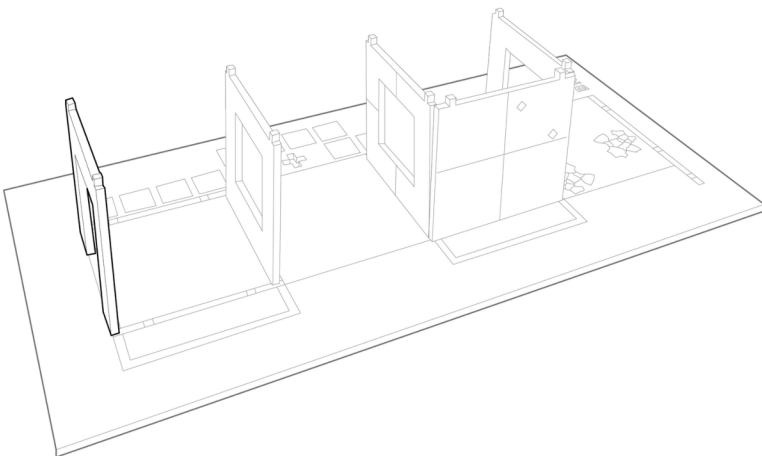
LOCK-IN A WINDOW WALL INTO THE BASE.

6



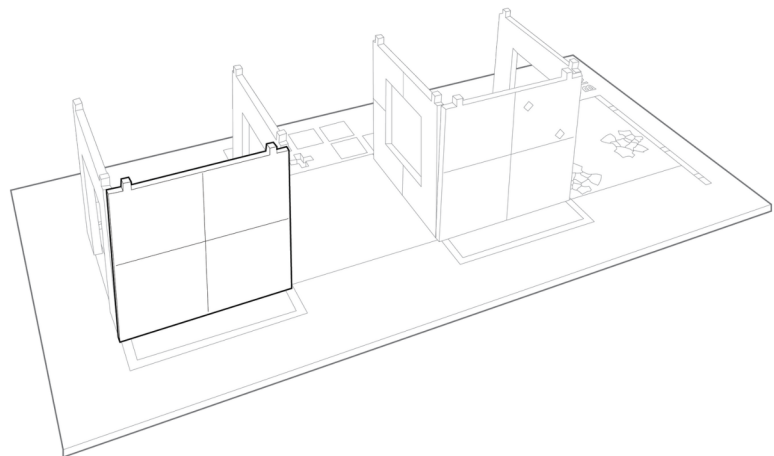
LOCK-IN A WINDOW WALL INTO THE BASE.

7



LOCK-IN A WALL WITH A DOOR INTO THE BASE.

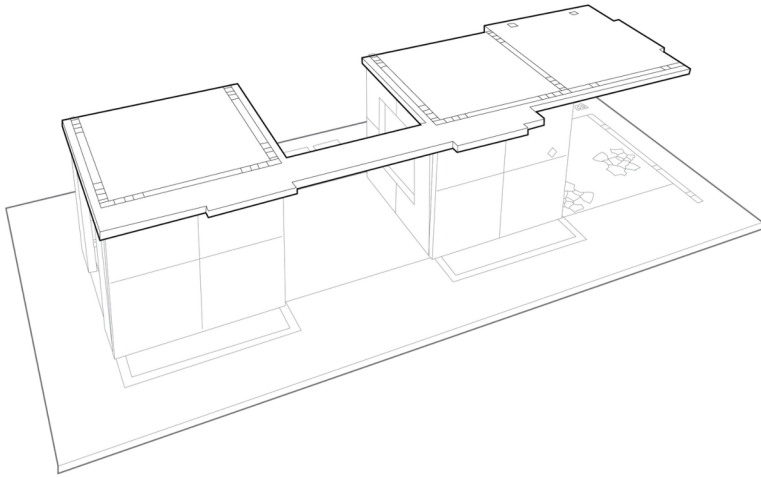
8



LOCK-IN THE FRONT WALL INTO THE BASE.

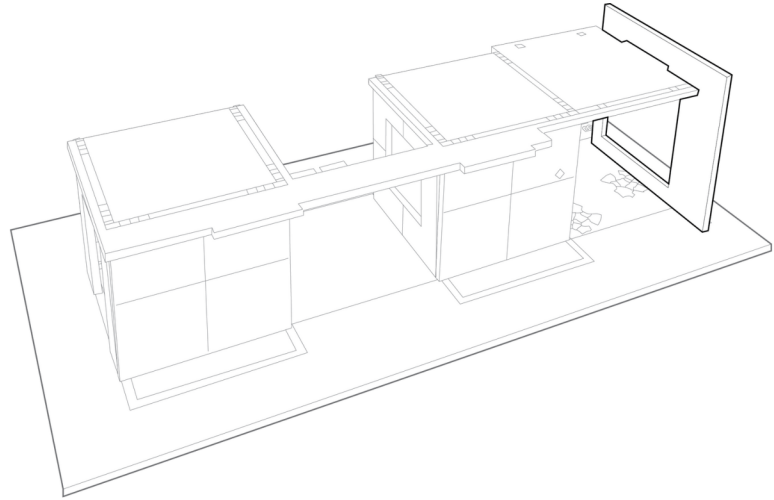
9

+ Be sure that all the connections are made before moving on to next step. Medium pressure / force can be used to engage all the tabs.



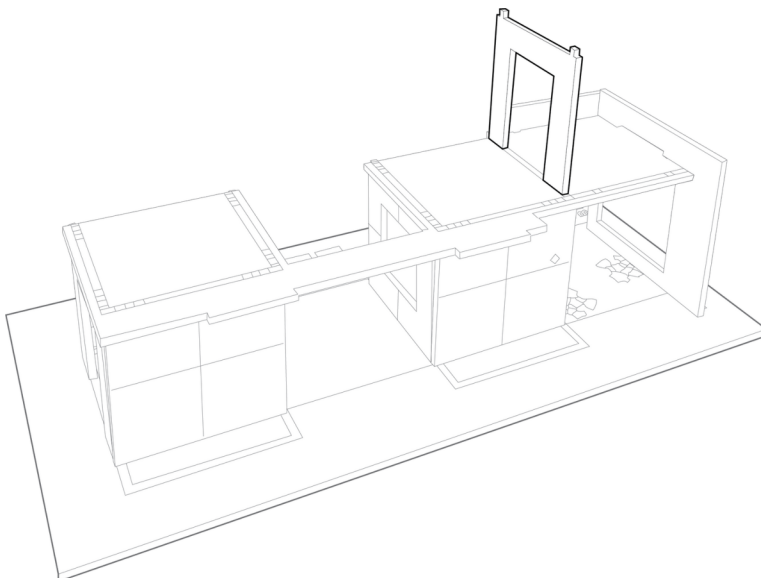
LOCK-IN THE SECOND FLOOR INTO THE TOP OF THE WALLS.

10



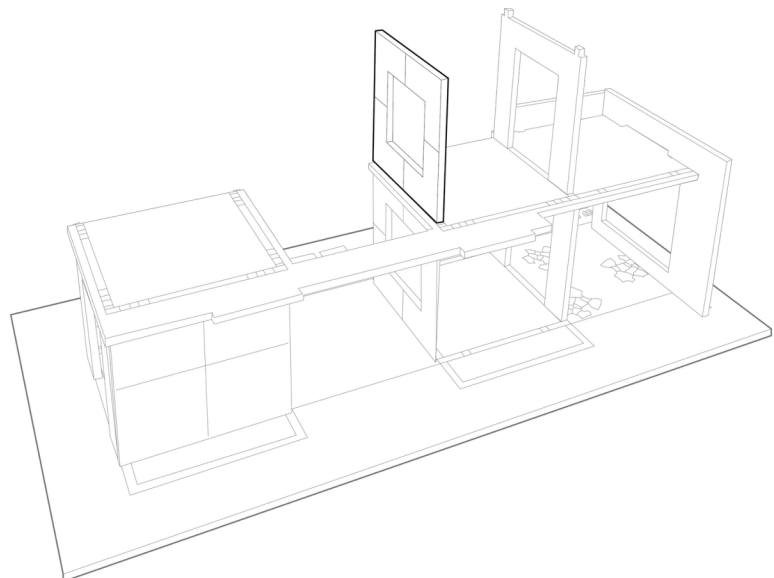
LOCK-IN THE STONE WALL.

11



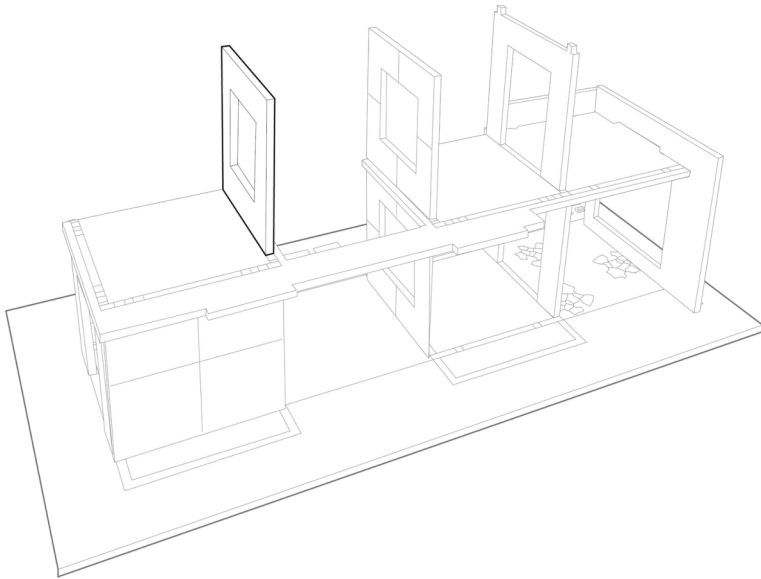
LOCK-IN A WALL WITH A DOOR INTO THE SECOND FLOOR.

12



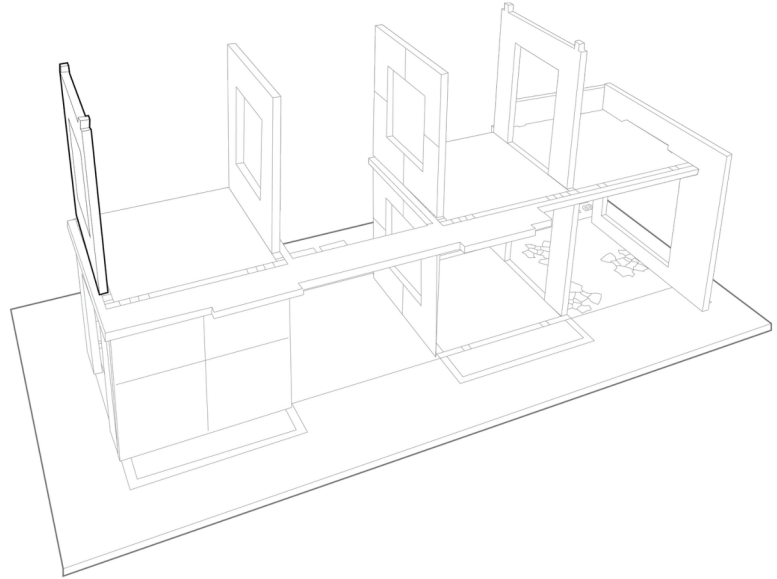
LOCK-IN A WALL WITH A WINDOW INTO THE SECOND FLOOR.

13



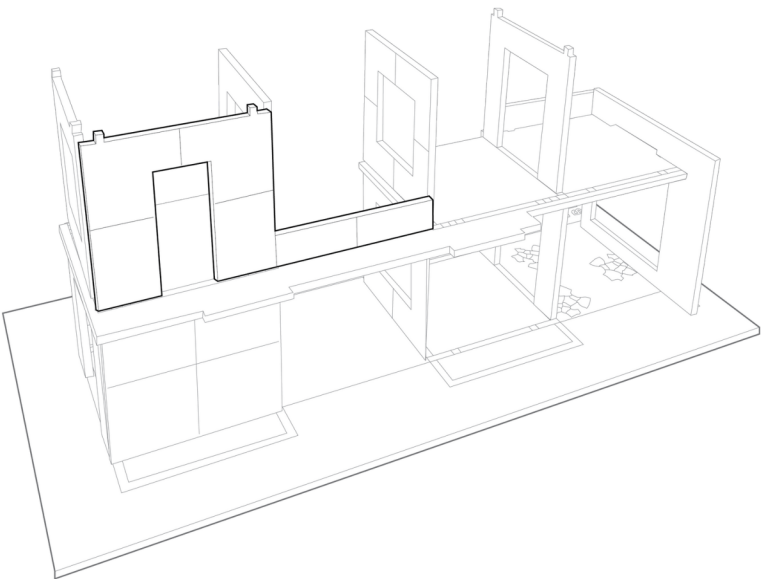
LOCK-IN A WALL WITH A WINDOW INTO THE SECOND FLOOR

14



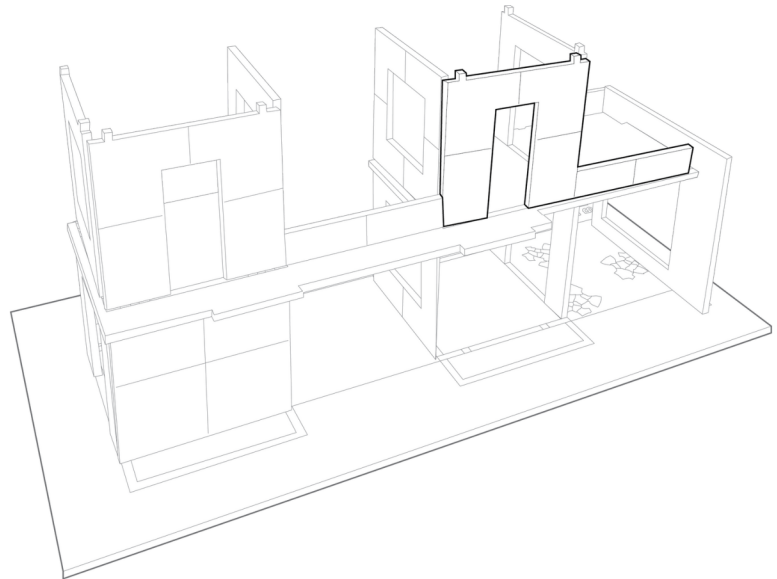
LOCK-IN A WALL WITH A WINDOW INTO THE SECOND FLOOR

15



LOCK-IN A WALL WITH A DOOR AND RAILING INTO THE SECOND FLOOR.

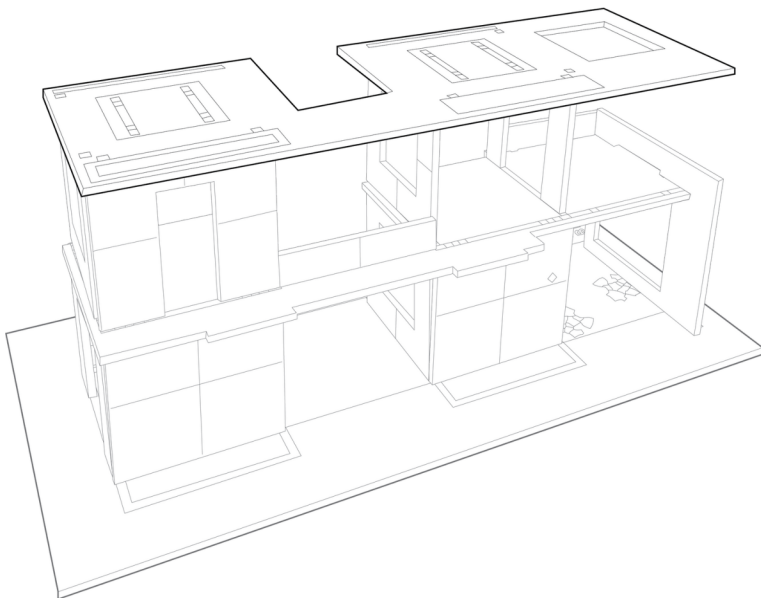
16



LOCK-IN A WALL WITH A DOOR AND RAILING INTO THE SECOND FLOOR.

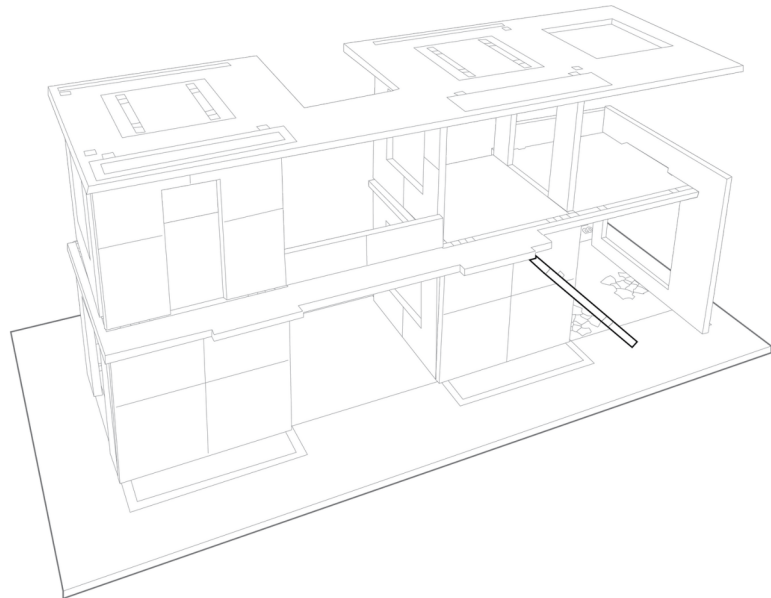
17

+ Be sure that all the connections are made before moving on to next step. Medium pressure / force can be used to engage all the tabs.



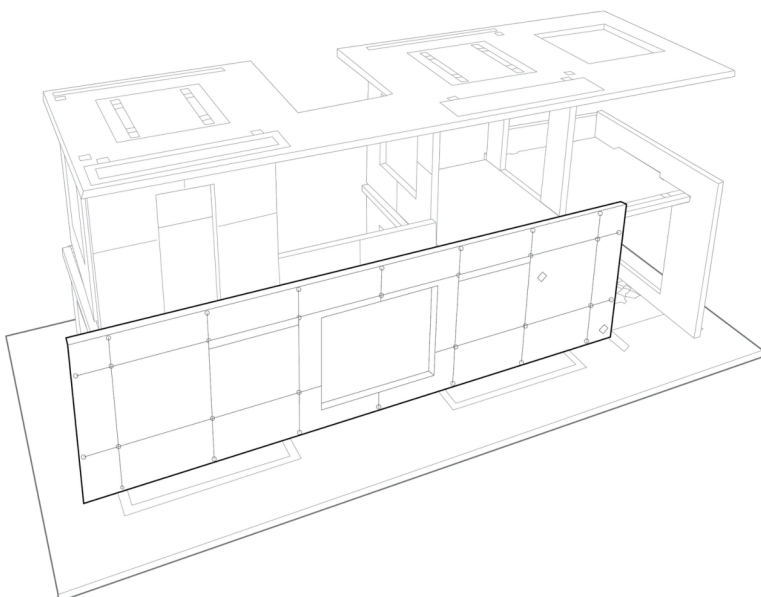
LOCK-IN THE ROOF TO THE TOP OF THE WALLS.

18



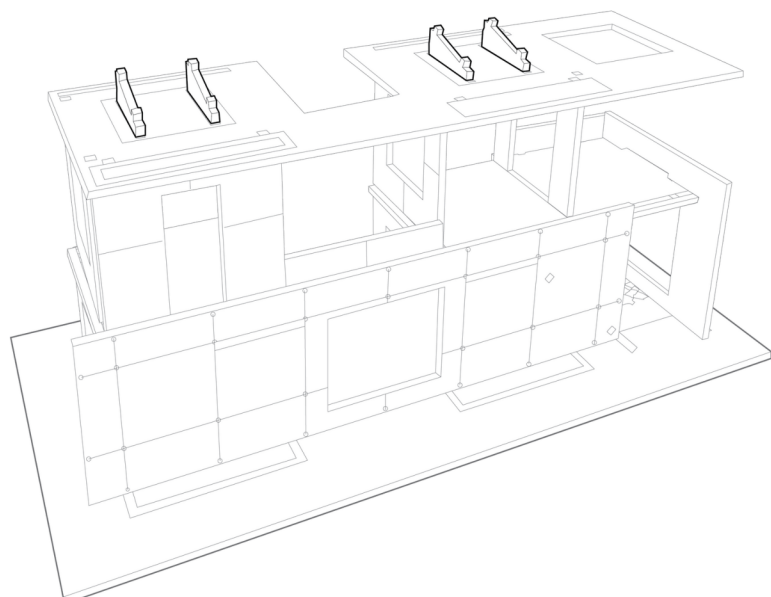
LOCK-IN THE RAMP TO THE SIDE OF THE FIRST FLOOR WALL.

19



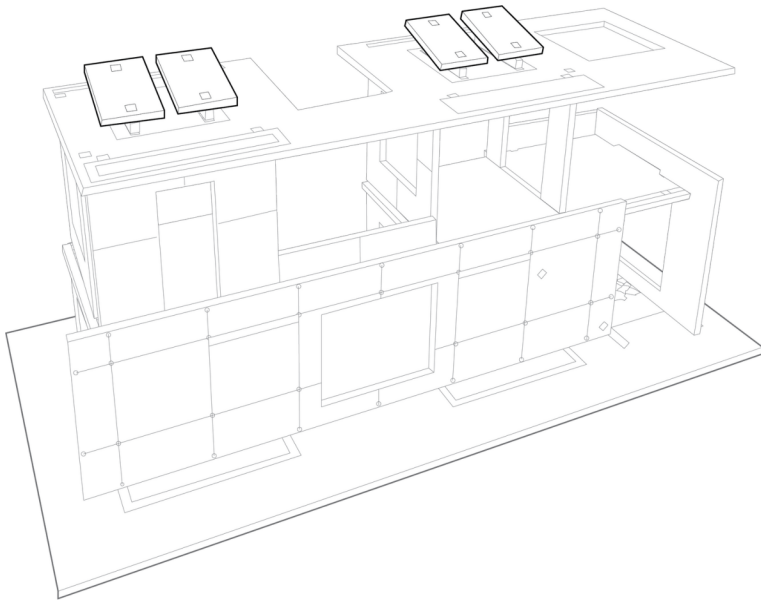
LOCK-IN THE GREEN WALL PANEL TO THE SIDE OF THE RAMP AND SECOND FLOOR.

20



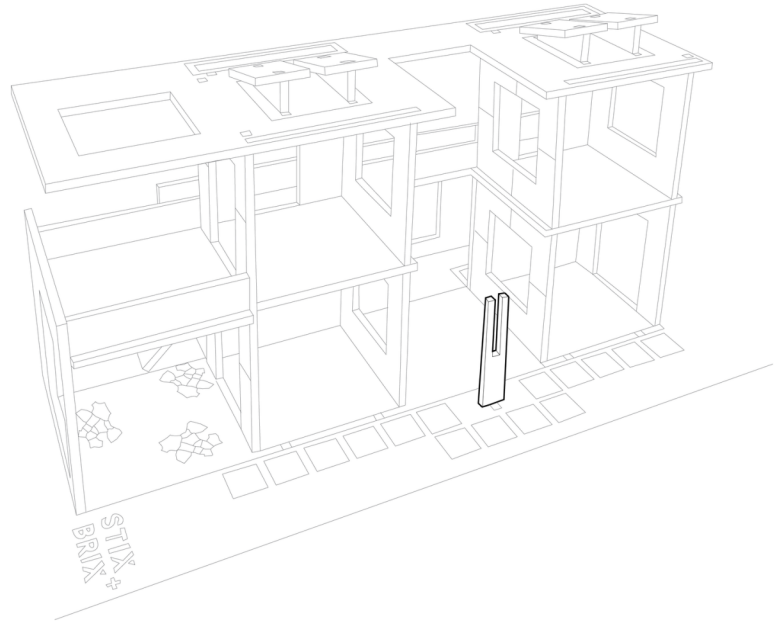
LOCK-IN THE 4 RAILS FOR THE SOLAR PANELS.

21



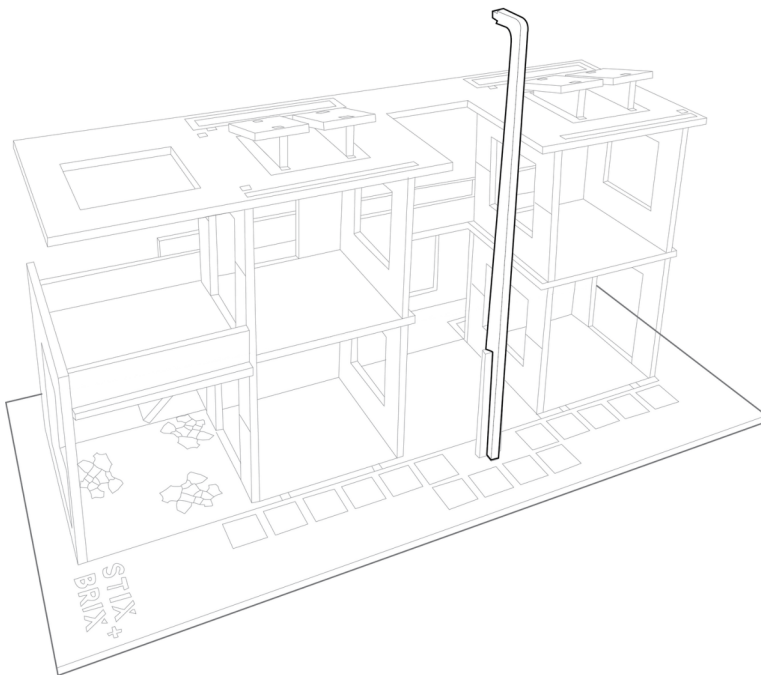
LOCK-IN THE SOLAR PANELS AND APPLY THE STICKERS.

22



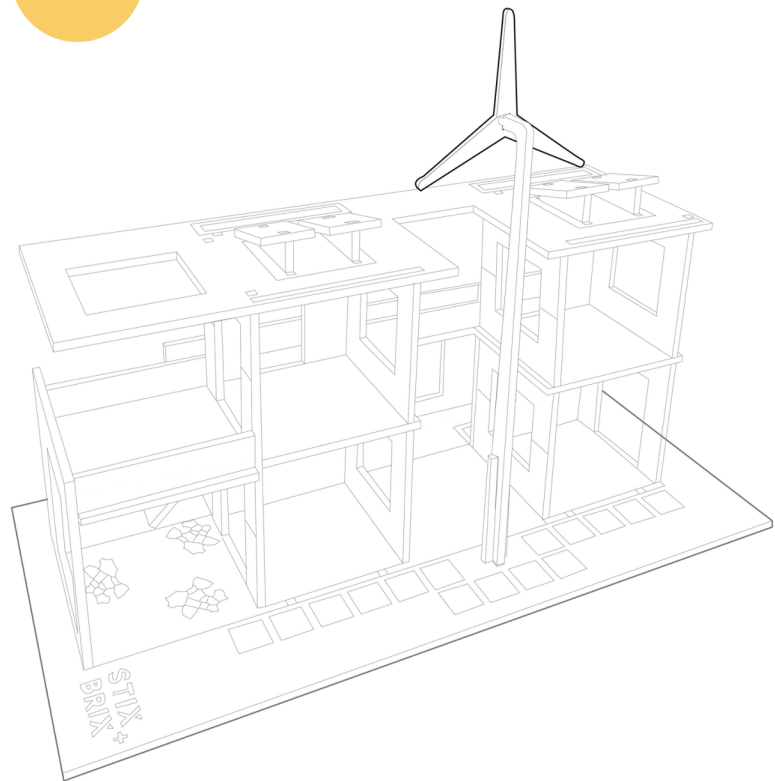
LOCK-IN THE BASE FOR THE WIND TURBINE.

23



LOCK-IN THE TOWER OF THE WIND TURBINE.

24



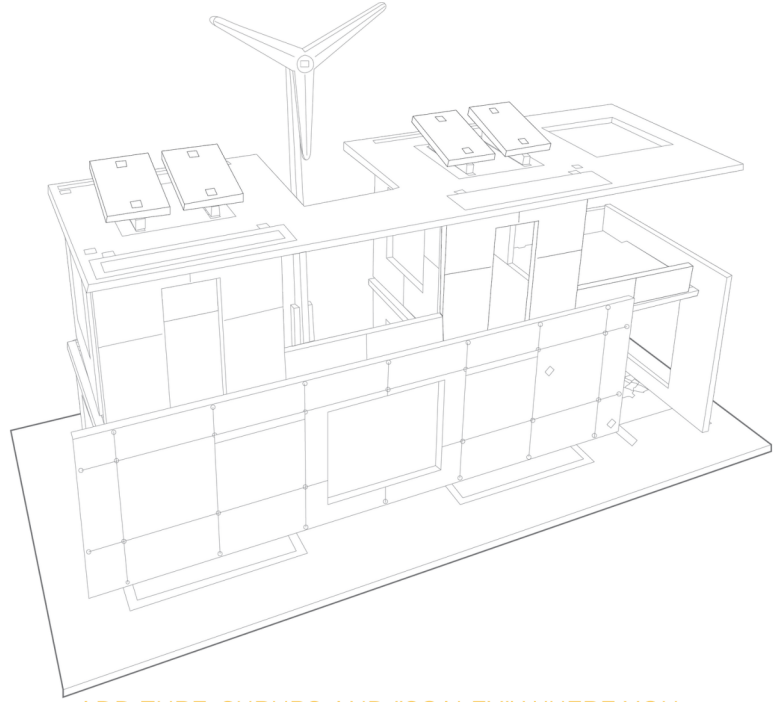
LOCK-IN THE BLADES OF THE WIND TURBINE.

25



SLIDE IN THE OVERHEAD DOORS. SLIDE THEM BACK OUT TO ADD FURNITURE STICKERS TO THE ROOMS OF THE HOUSE.

26



ADD TURF, SHRUBS AND "SCALEY" WHERE YOU WOULD LIKE IN YOUR ECO-HOUSE.

ECO-HOUSE

