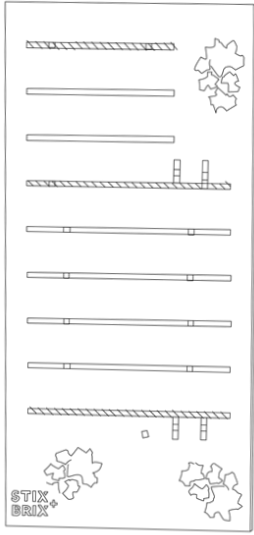


# BEACH HUT

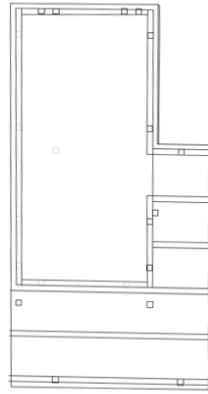


# START HERE

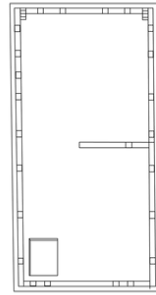
## MATERIALS + TOOLS



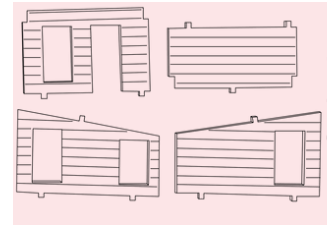
BASE



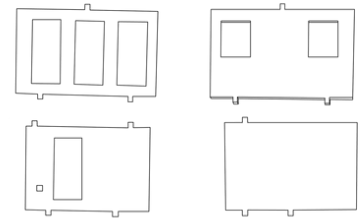
GROUND FLOOR



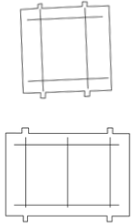
SECOND FLOOR



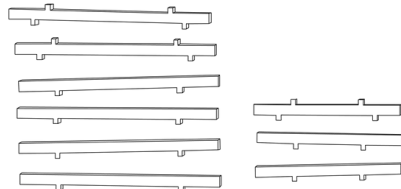
SECOND FLOOR WALLS



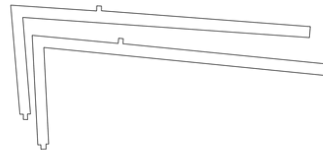
GROUND FLOOR WALLS



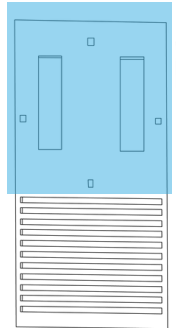
GROUND FLOOR ACRYLIC WALLS



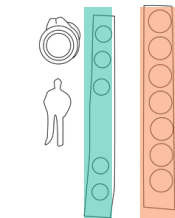
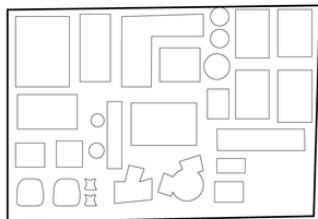
LOWER FRAME PIECES



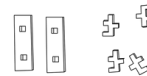
SLOPING BEAM



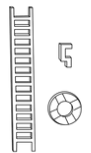
ROOF



SCALEY + SAND + BUSHES



STEPS



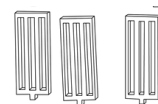
LADDER + LIFESAVER SIGN



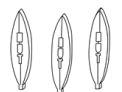
PAINT BRUSH + PAINT + STICKERS



BALCONY RAILINGS

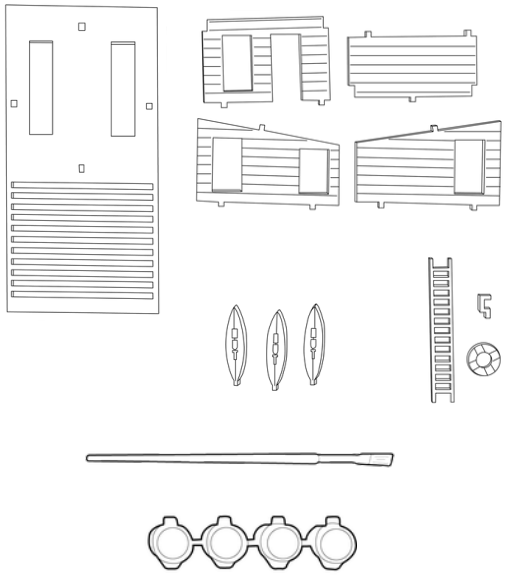


SUN LOUVERS



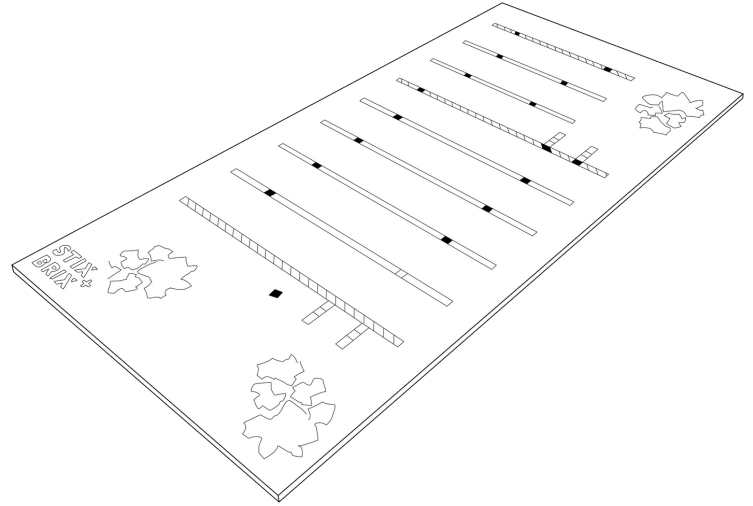
SURFBOARDS

1



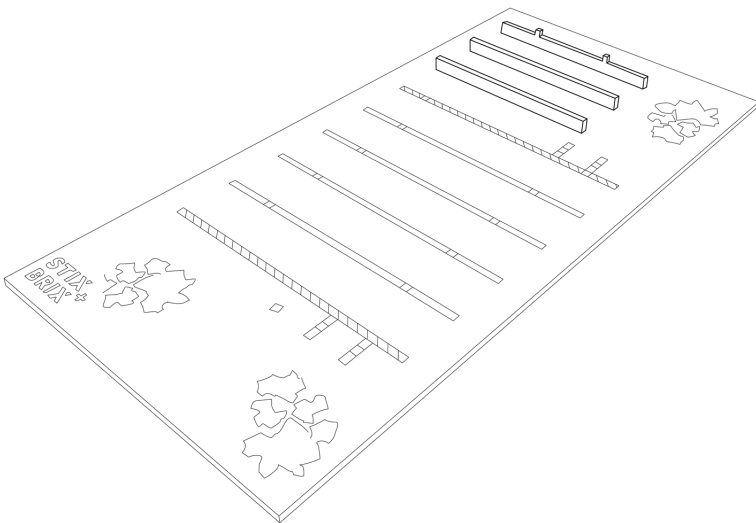
PAINT THE WOOD PIECES YOU WOULD LIKE.  
LET ALL THE PIECES DRY.

2



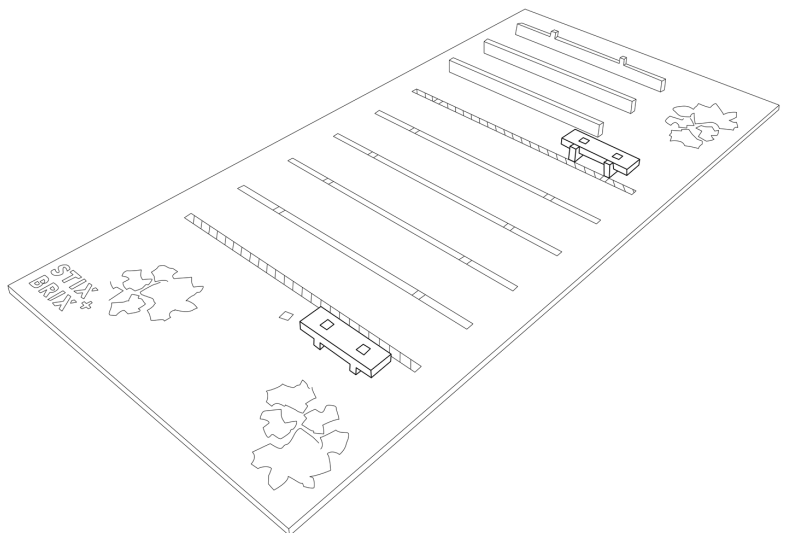
LOCATE YOUR BASE TO BUILD ON.

3



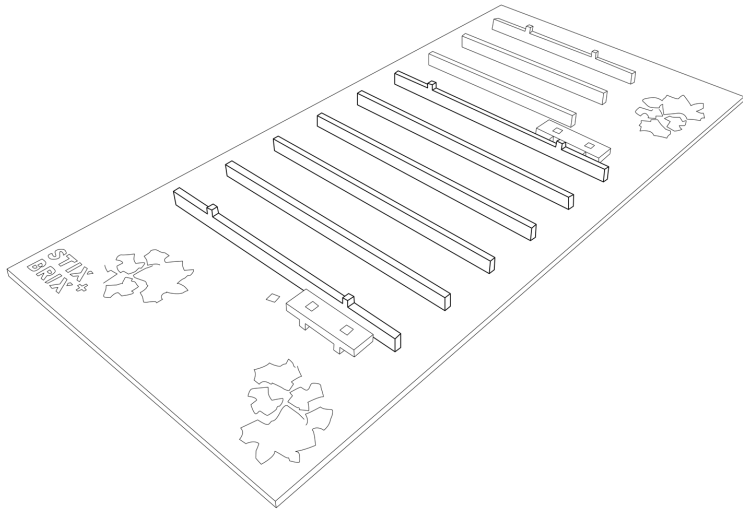
LOCK-IN THE SHORT FRAME PIECES

4



LOCK-IN BOTH STAIR RISERS + TREADS

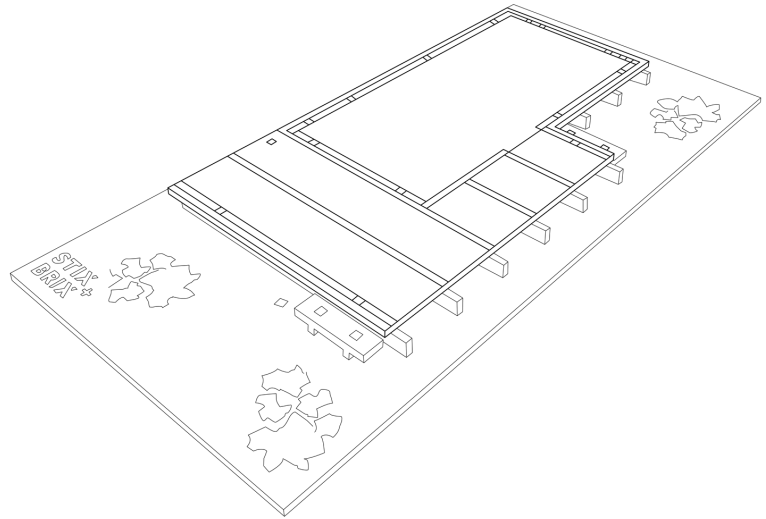
5



LOCK-IN THE LONG FRAME PIECES.

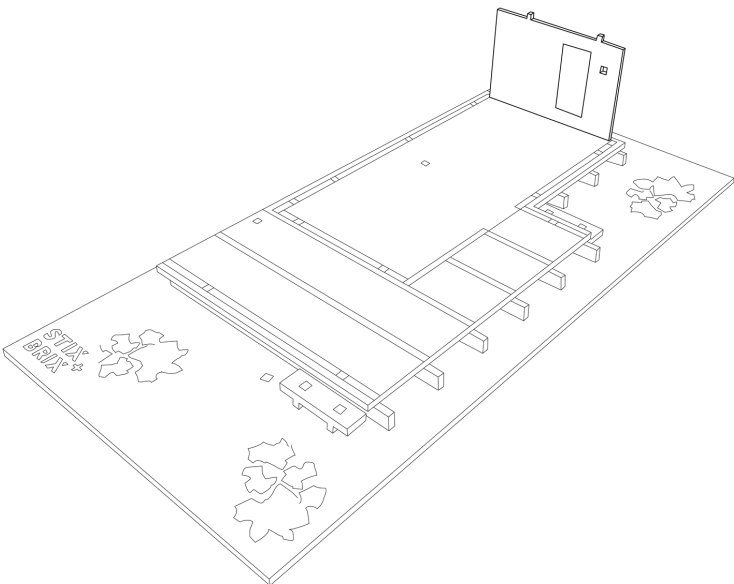
6

+ Be sure that all the connections are made before moving on to next step. Medium pressure / force can be used to engage all the tabs.



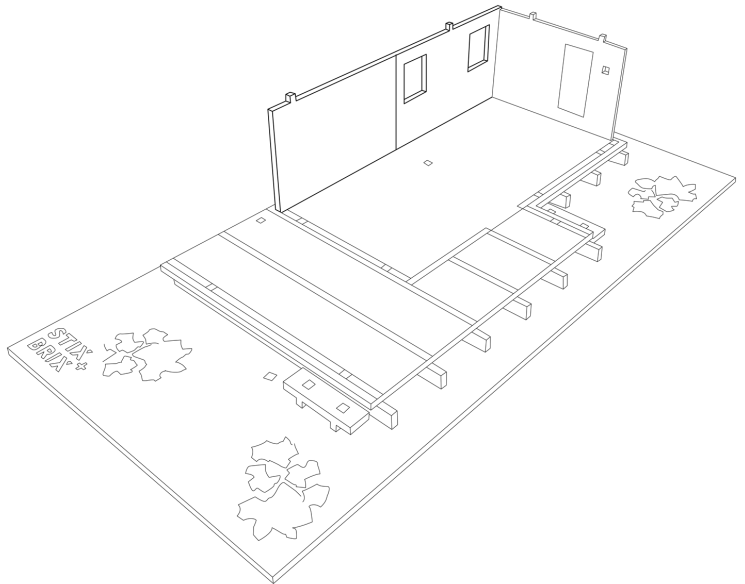
LOCK-IN THE GROUND FLOOR OVER THE FRAME PIECES

7



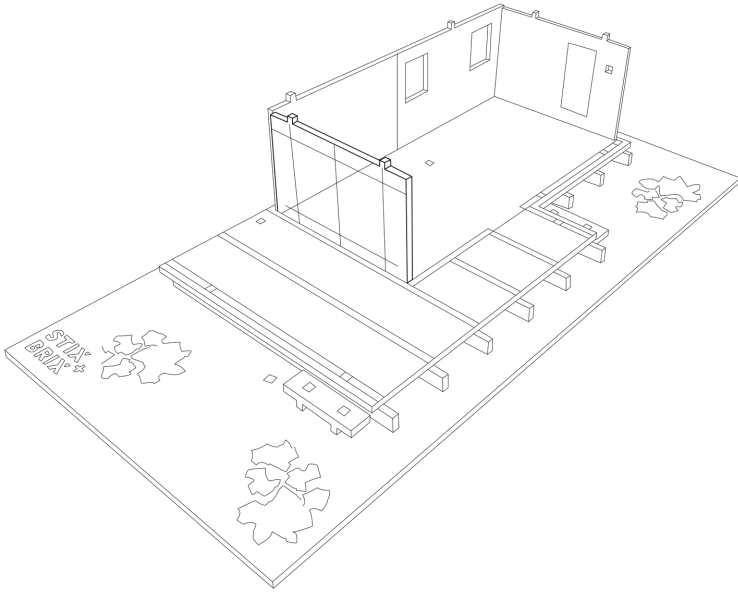
LOCK-IN THE GROUND FLOOR REAR WALL.

8



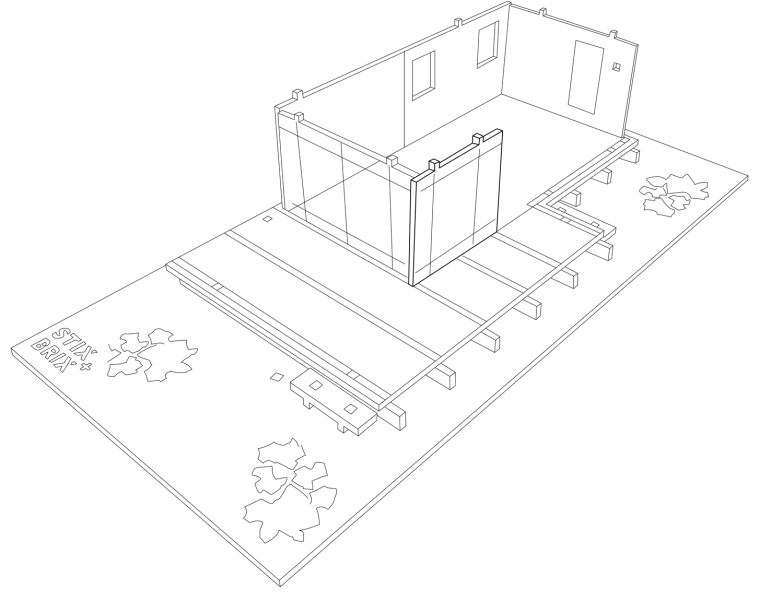
LOCK-IN THE GROUND FLOOR SIDE WALL

9



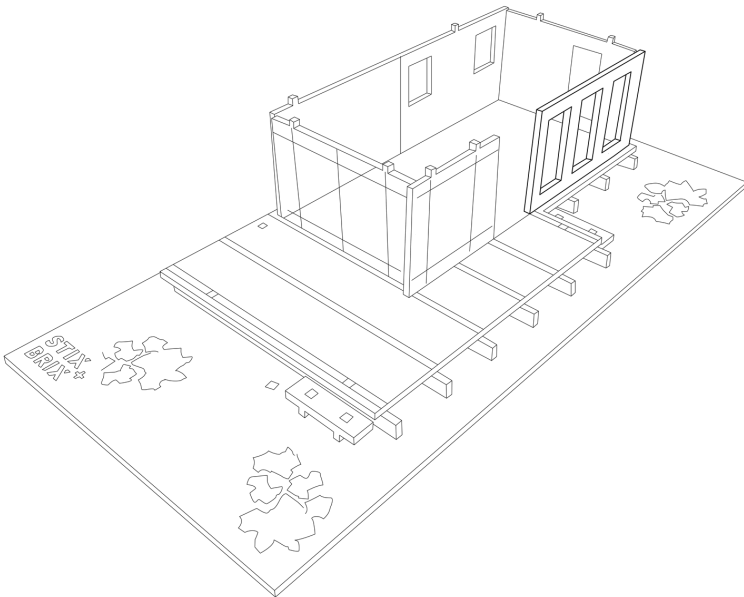
LOCK-IN THE GROUND FLOOR LONG ACRYLIC WALL.

10



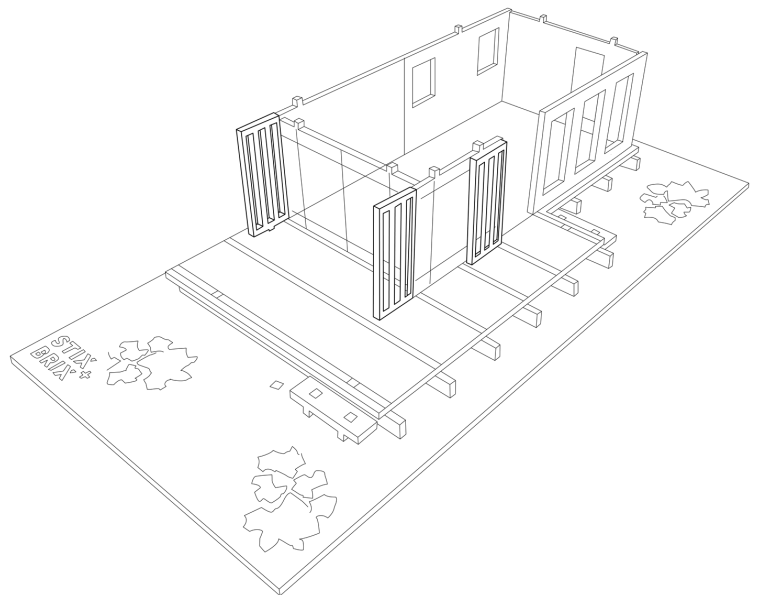
LOCK-IN THE GROUND FLOOR SHORT ACRYLIC WALL.

11



LOCK-IN THE LAST GROUND FLOOR WALL.

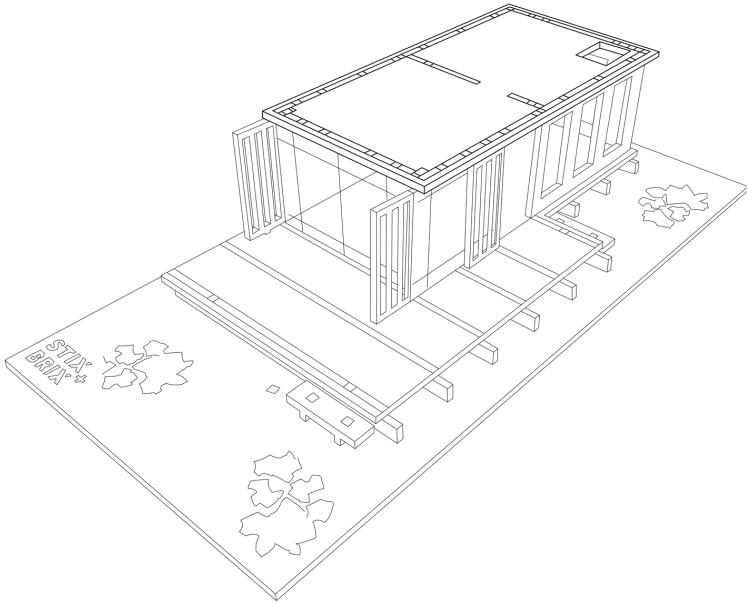
12



LOCK-IN THE THREE SUN LOUVERS. YOU CAN ALSO ADD FURNITURE STICKERS TO GROUND FLOOR.

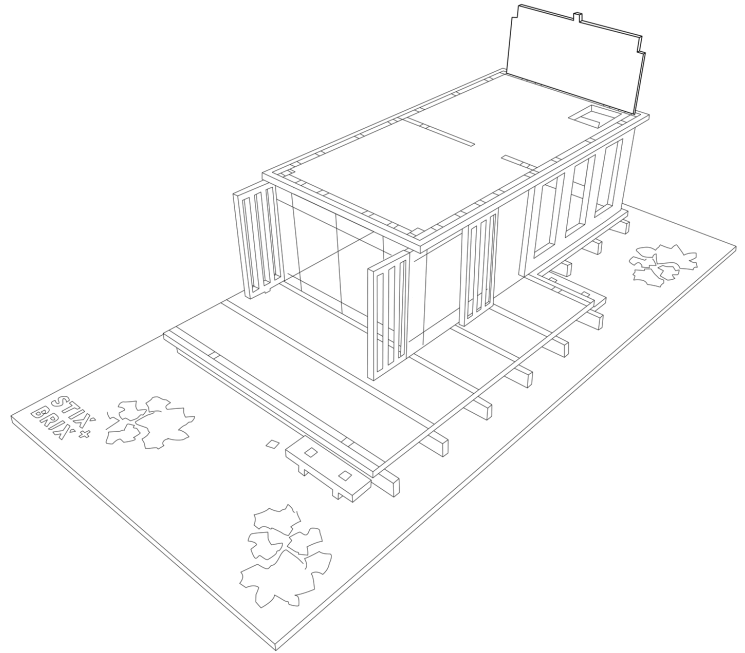
13

+ Be sure that all the connections are made before moving on to next step. Medium pressure / force can be used to engage all the tabs.



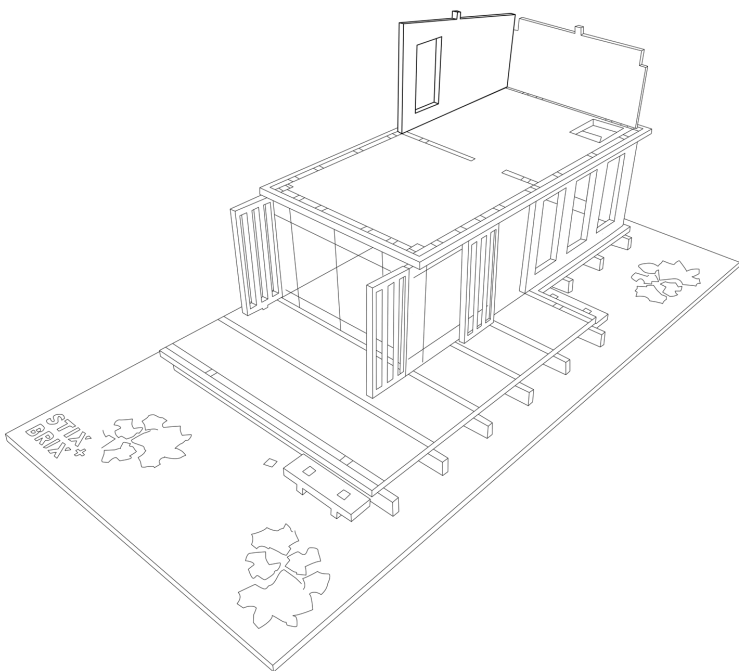
LOCK-IN THE SECOND FLOOR OVER THE WALL TABS.

14



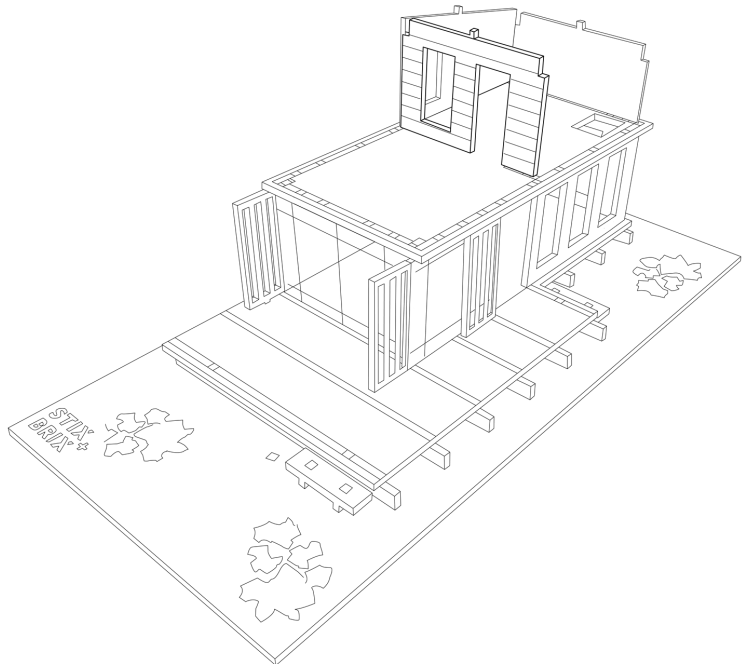
LOCK-IN THE SECOND FLOOR REAR WALL.

15



LOCK-IN THE SECOND FLOOR SLOPING WALL.

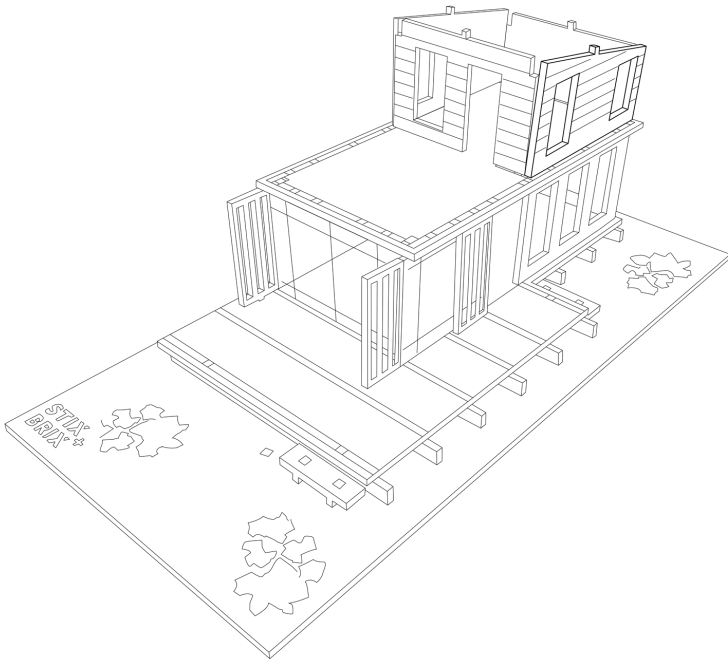
16



LOCK-IN THE SECOND FLOOR FRONT WALL.

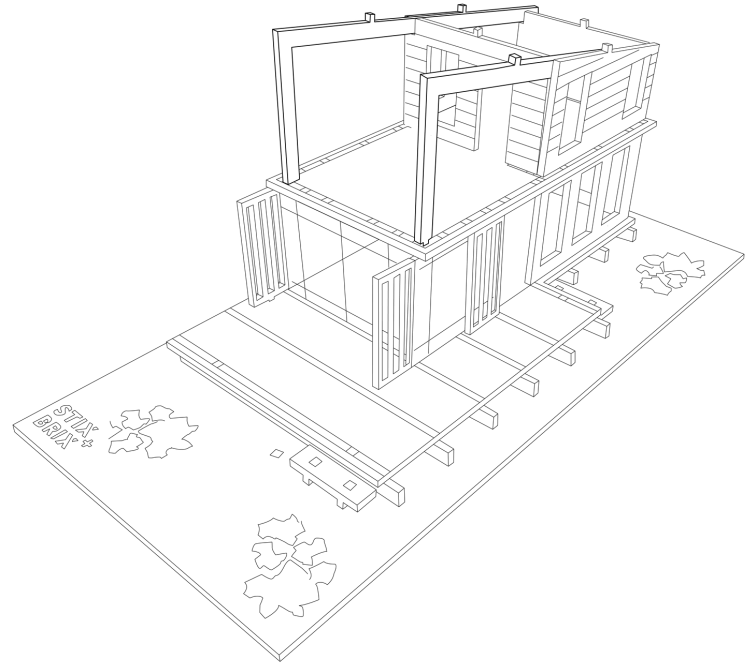


17



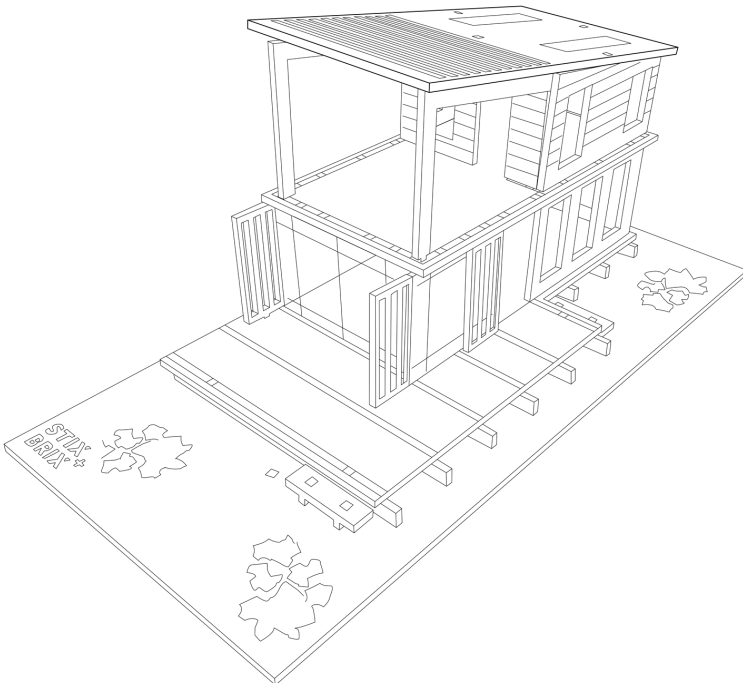
LOCK-IN THE LAST SLOPING WALL. YOU CAN ALSO ADD FURNITURE STICKERS TO SECOND FLOOR.

18



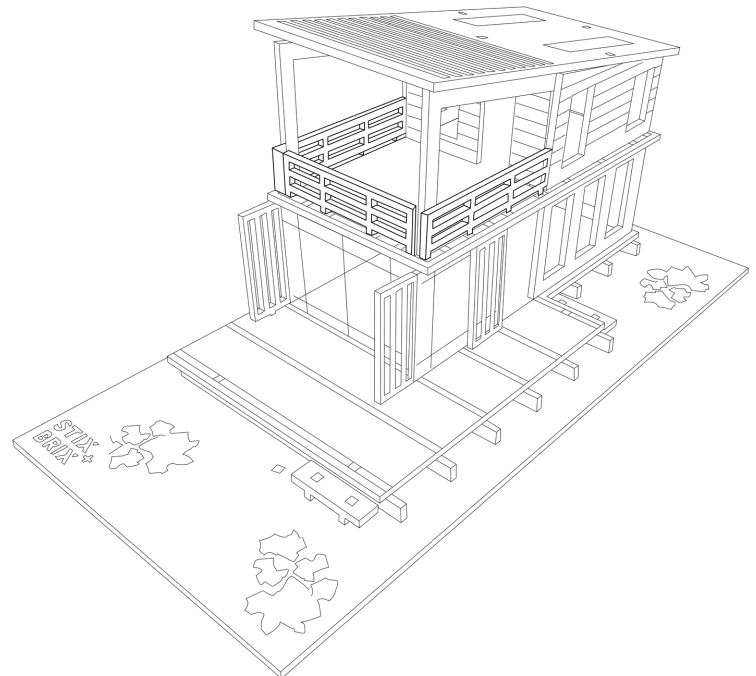
LOCK-IN SLOPING BEAMS TO THE SECOND FLOOR AND SECOND FLOOR REAR WALL.

19



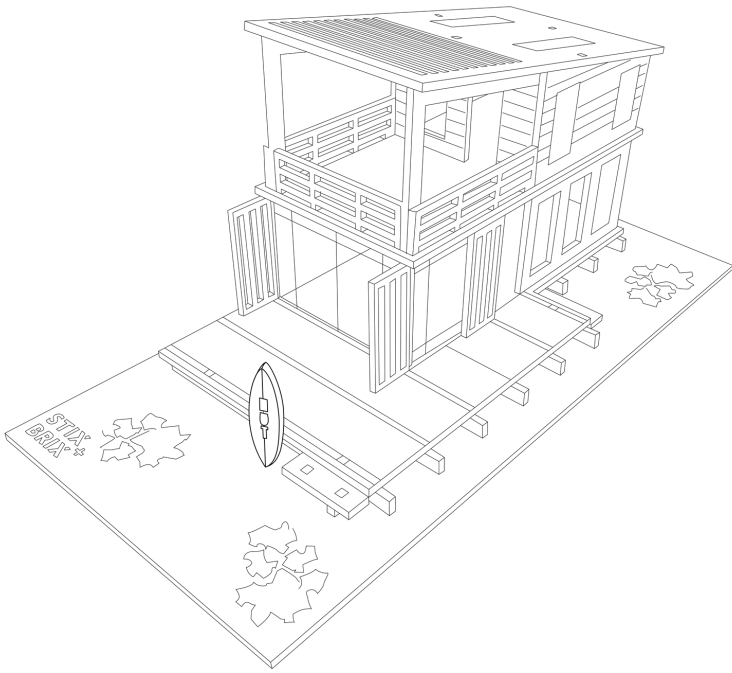
LOCK-IN THE ROOF TO THE TOP OF WALLS AND SLOPING BEAMS.

20



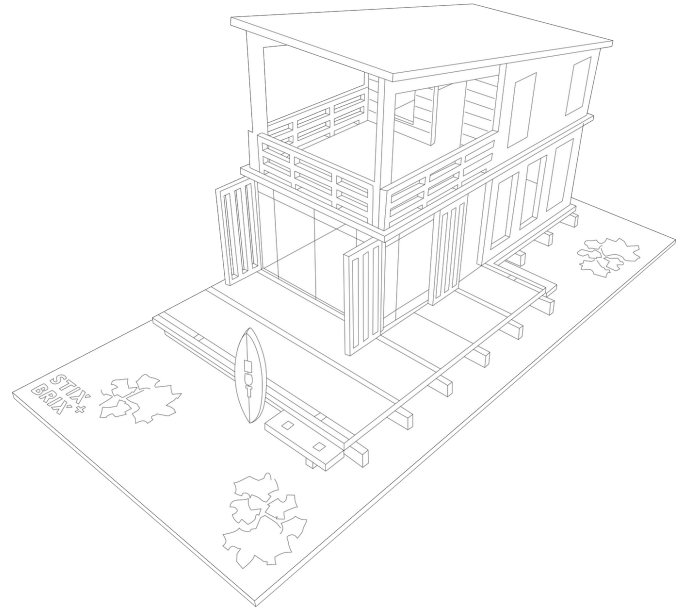
LOCK-IN THE THREE RAILINGS.

21



LOCK-IN THE SURF BOARDS AND LIFESAVER SIGN.

22



ADD SAND, BUSHES, SURF BOARDS, LADDER, STICKERS AND SCALEY TO YOUR MODEL.



# ECO-HOUSE

