

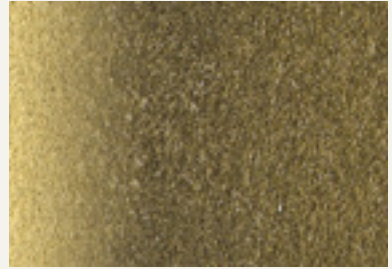
novacolor™
I colori dell'Architettura

Texi





TEXI SILVER 004 su NOVALUX E IP 17190



TEXI GOLD 007 su NOVALUX E IP 17190



TEXI SILVER 004 su NOVALUX E IP 17176



TEXI GOLD 009 su NOVALUX E IP 17169



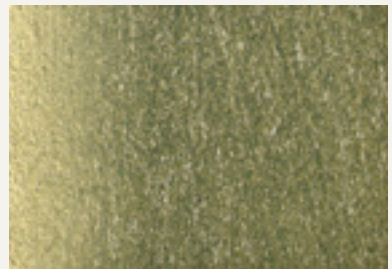
TEXI SILVER su NOVALUX E IP 17144



TEXI GOLD 009 su NOVALUX E IP 17176



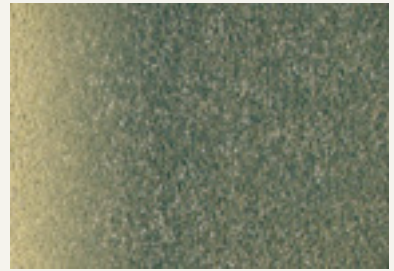
TEXI SILVER 010 su NOVALUX E IP 17176



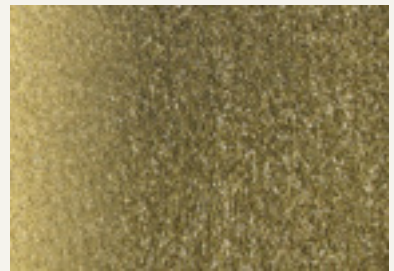
TEXI GOLD su NOVALUX E IP 17176



TEXI GOLD 007 su TEXI PEARL 002
su NOVALUX E BIANCO



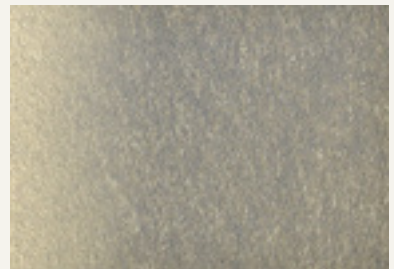
TEXI GOLD 007 su NOVALUX E IP 17176



TEXI GOLD su NOVALUX E IP 17190



TEXI GOLD 008 su NOVALUX E IP 17187



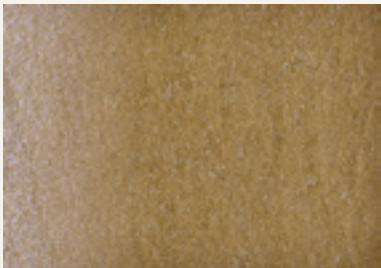
TEXI GOLD su NOVALUX E IP 17154



TEXI PEARL 005 su NOVALUX E IP 17187



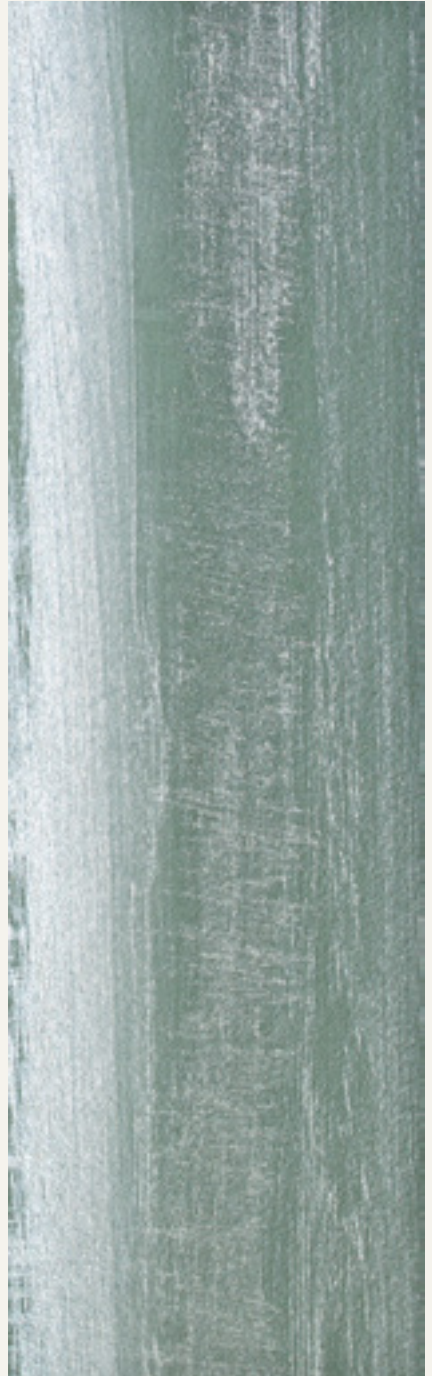
TEXI PEARL 005 su NOVALUX E IP 17115



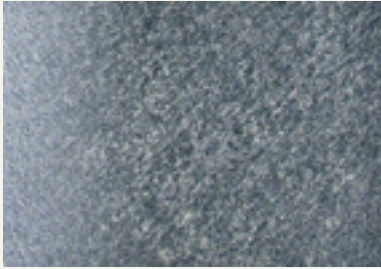
TEXI PEARL 006 su NOVALUX E IP 17128



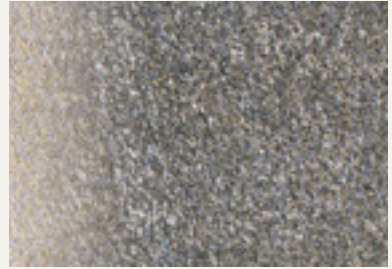
TEXI SILVER su NOVALUX E IP 17140



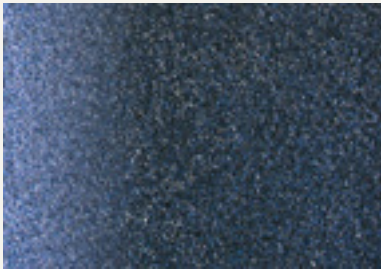
TEXI SILVER su NOVALUX E IP 17212



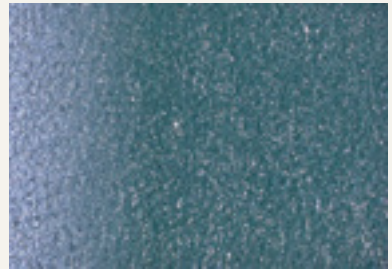
TEXI SILVER su TEXI PEARL 002
su NOVALUX E IP 17190



TEXI GOLD su TEXI PEARL 001
su NOVALUX E IP 17190



TEXI PEARL su NOVALUX E IP 17190



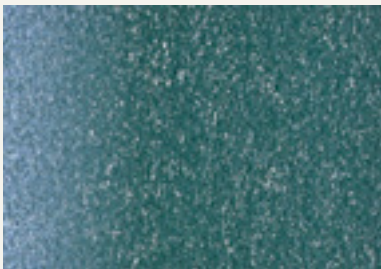
TEXI PEARL 002 su NOVALUX E IP 17176



TEXI GOLD su TEXI PEARL 001
su NOVALUX E IP 17176



TEXI PEARL 003 su NOVALUX E IP 17140



TEXI PEARL 003 su NOVALUX E IP 17176



TEXI SILVER 004 su NOVALUX E IP 17140



IT Rivestimento decorativo per interni ad effetto metallizzato oro, argento e perla

Diluizione: pronto all'uso, diluizione massima 30% in volume, con acqua.

Applicazione: su fondo Novalux E, applicare Texi in due strati con pennello "spalter" o con spugna marina.

Resa: 5-7 m²/l nei due strati.

Per maggiori informazioni consultare la scheda tecnica.

FR Finition décorative pour surfaces intérieures, à effets métalliques Or, Argent ou Perle

Dilution: prêt à l'emploi, diluable avec au maximum 30% en volume avec de l'eau.

Application: sur Novalux E, appliquer Texi en deux couches avec pinceau de type «spalter» ou avec éponge marine.

Rendement: 5-7 m²/l en deux couches.

Pour plus d'informations, consulter la fiche technique.

EN Decorative finish for interiors with gold, silver and pearl metallic patterns

Dilution: ready to use, maximum dilution 30% in volume with water.

Application: on Novalux E, apply Texi in two layers with a "spalter" brush or with a sea sponge.

Yield: 5-7 m²/l in two layers.

For more information please check the technical data sheet.

DE Dekorative Wandbeschichtung für Innenbereichen mit Gold-Silver und Perlmutter-Zusatz

Verdünnung: bis zu maximal 30% mit Wasser verdünnen.

Austragungstechnik: Untergrund mit zwei Schichten Novalux E vorbereiten (Innenfarbe) und Texi mit Bürste oder Spalter-Pinsel oder Naturschwamm in maximal zwei Schichten auftragen.

Ergiebigkeit: 5-7m²/l in den zwei Schichten.

Für weitere Infos bitte technisches Merkblatt nachfragen.



www.novacolor.it

Novacolor Srl
47122 Forlì - Italia
Via U. Aldrovandi 10
Tel +39 0543 401840
Fax +39 0543 414585
info@novacolor.it

MADE IN ITALY

Cod: N000174
01/2018

AZIENDA CON SISTEMA
DI GESTIONE QUALITÀ
CERTIFICATO DA DNV GL
= ISO 9001 =

COMPANY WITH
QUALITY SYSTEM
CERTIFIED BY DNV GL
= ISO 9001 =



NOVACOLOR is committed to reduce
the environmental impact by producing
friendly materials.