

The Minor Arcana



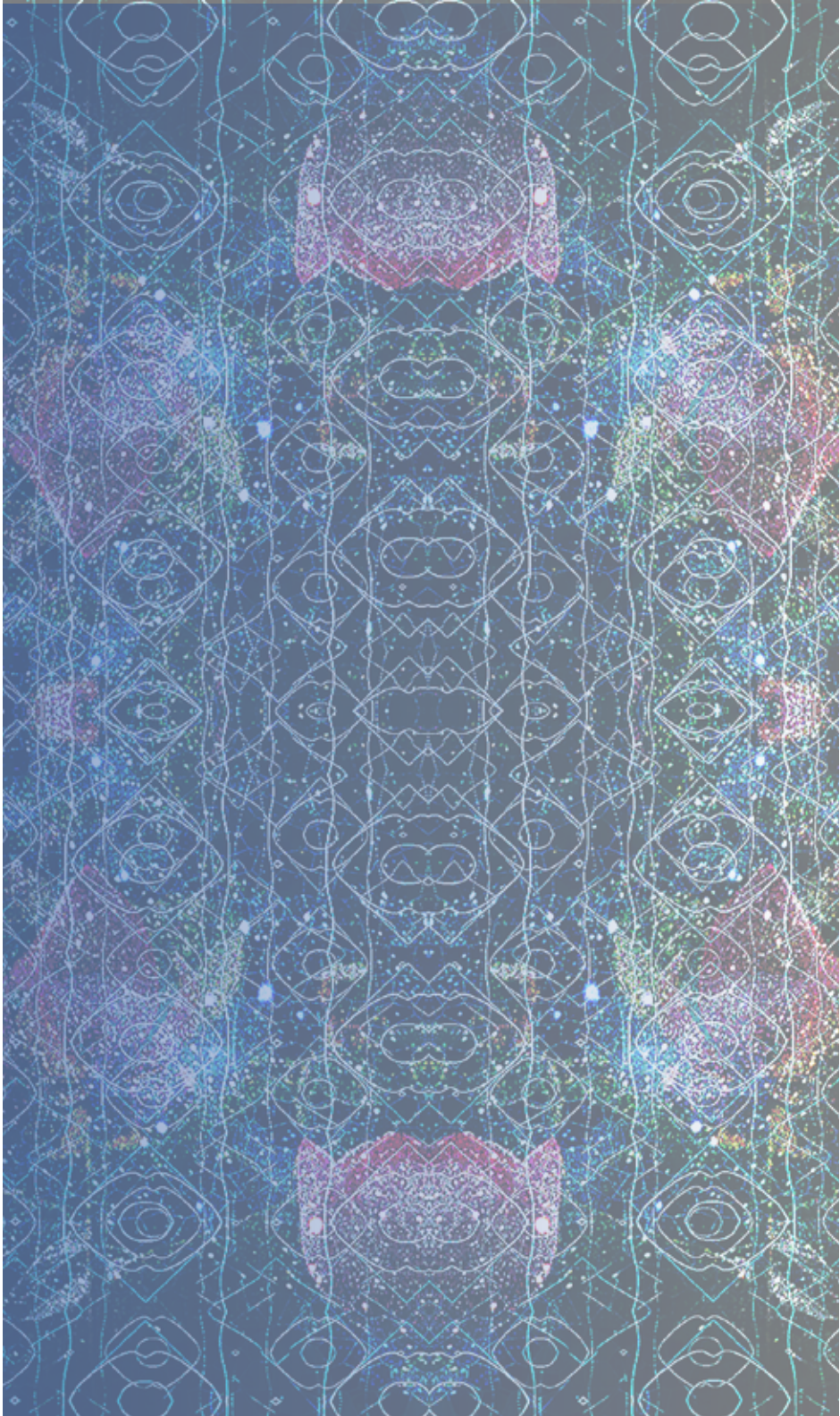


Table of contents

The suit of Wands	4
The suit of Cups	22
The suit of Swords	40
The suit of Pentacles	60



Ace of Wands



Keywords : Energy, creativity, inspiration, yes ! ideas, passion, excitement, opportunity.

The Ace of Wands is the first card of the suit of Wands. It is represented by a monolithic wood sculpture in the shape of a cobra.

It stands erect and solid on the ground and is surrounded by flames. The snake shapes represents "Kundulini", our vital energy.

Behind, among purple clouds can be seen Laputa, the castle floating in the Sky from Hayao Miyazaki's Castle in the Sky. In the movie, humans used to build flying cities, which were later destroyed by catastrophes, it forced the survivors to live on the ground except for Laputa that remained in the sky and hidden within a thunderstorm.

Like Laputa, the Ace of Wands stands alone in its uniqueness and inspires creativity and inspiration.

Upright meaning :

When the Ace of Wands appears in a reading it means there is a potential, an opportunity that needs to be grasped in order to be manifested in your life.

The Ace of Wands represents a burst of energy, originality and creativity. It means being inspired and not being afraid to follow your creativity.

This card can indicate a lot of passion and excitement when it comes to relationships.

Finally, the Ace of Wands can be an indication of starting a new venture or a new life.

Reverse meaning :

Reversed, the Ace of Wands points to a feeling of exhaustion. It could be that you have lack of motivation and have trouble finding things that excite you.

It can also point towards too many ideas without any actions behind to make any of them concrete.

The reversed Ace of Wands encourages you to reconnect with your passion or learn something fresh and new that excites you.

Quote :

" If you have built castles in the air, your work need not be lost; that is where they should be. Now put the foundations under them."

~ Henry David Thoreau

Two of Wands



Keywords : Choice, contemplation, reflection, potential, planning.

The Two of Wands is represented by Clark Kent from Smallville.

He is standing in the Fortress of Solitude, a palace made of ice and crystals.

In the fortress, Clark has just learned about his true origins and all his potential powers. Behind him is a holographic image of planet earth. It represents the choice and commitment he has to make before endorsing the responsible role and costume of Superman.

A whole new life is awaiting him. The two red roses besides him are the symbols of his heritage and the deep love of his parents, still watching over him in spirit.

Upright meaning :

When this card appears in a reading it means that you have abundant energy at your disposal and find yourself at a crossroad deciding what to do with it.

This card is an indication to review your past and how you got to where you are and decide what path will serve you best.

It is a card that signifies your choosing of a mission, a new path in life. It encourages you to be bold and take the necessary steps to be in charge of your destiny.

Reverse Meaning :

Reversed, the Two of Wands means being stuck and indecisive. You may feel pressured to make a decision while not yet prepared or ready for it.

You may feel a lack of experience for a role assigned to you and in consequence have little motivation for it.

Finally it calls for you to review the experience you already have and feel confident about and move from there.

Quote :

“It isn’t where you came from; it’s where you’re going that counts.” ~ Ella Fitzgerald

Three of Wands



Keywords : Energy, creativity, inspiration, vision, passion, excitement, expansion, planning, opportunity.

The Three of Wands is represented by Superman overlooking a star filled sky.

He has just endorsed his new identity as Superman, and is now ready to take on a new mission and responsibility.

He is standing firmly on top of a hill that overlooks the ocean. His gaze is directed towards the sky and he is possessed with tremendous energy.

With his superhuman vision he scrutinizes the starry sky for his next destination. He is about to take off and fly at lightening speed.

Superman is on a mission that he cannot turn his back from. He has great power and responsibility for the human race.

Upright meaning :

When the Three of Wands appears, it means moving forward on a decision. You have tremendous energy and have set in motion the necessary steps to accomplish your vision.

It encourages you to be fearless and dream big.

In your motion forward, you may require to let go of past resentments or blockages for they no longer serve you in the new vision you have now committed to.

This card can also indicate traveling, moving or negotiating with people.

Reverse meaning :

Reversed, the Three of Wands points to delays in decision, negotiation or a project.

It indicates that even though you have a firm idea of what you want and desire, you do not know where to start or how to implement it.

It urges you to examine what is blocking you from manifesting your vision. Do you need more time, resources or assistance ?

Quote :

“With great power comes great responsibility.”

~ Stan Lee

Four of Wands



Keywords : Ceremony, foundation, home, arrival, motherly support, gratitude.

The Four of Wands is represented by a wedding scene from the movie “Mamma Mia.”

Sophie, played by Amanda Seyfried is escorted down the aisle by Donna, played by Meryl Streep.

The Sky is full of pink fluffy cloud that bless a beautiful and unforgettable day of gratitude and celebration. Donna holds Sophie’s hand towards her chest and gives all her blessings and support. A bright star is brimming in the middle of her forehead and symbolizes her infinite gratitude, love and unconditional support.

Upright meaning :

When the Four of Wands appears in a reading it is time to feel gratitude for the success of your journey and be thankful for the people that helped you be the person that you are now.

It is marking a certain accomplishment, it could be a wedding, a graduation, a successful exam or a promotion.

In this card Sophie represents feeling whole, she is being supported mentally, spiritually and physically by Donna; who is the symbol of a strong foundation, of family, of a deep bond, unconditional motherly love and deep gratitude.

Reverse meaning :

Reversed, the Four of Wands represents being ungrateful and feeling a lack of support from your close environment.

You may also feel stressed over preparing for an important event and there may be some delays in your plans.

Finally this card reversed can indicate a stressful home environment where one may not feel there is enough time spent for nurturing.

Quote :

“If the only prayer you said in your whole life was, Thank You, that would suffice.”

~ Meister Eckhart

Five of Wands

Keywords : Competition, struggle, problem-solving, opposition, challenge, edge, contrast.

The Five of Wands is represented with a fighting scene from the series “Game of Thrones” between the Prince Oberyn Martell and “The Mountain”, knight Gregor Clegane.

Oberyn Martell, known as the Red Viper, is a member of House Martell, and had a very close relationship with his sister Elia. Following the sack of King’s Landing, he learned that she was raped and murdered, along with her son, by a Lannister knight, Gregor Clegane. He took it upon himself to avenge his family.

We see here, the two men engaged in a fierce duel to the death in an arena. They are both very opposed in style, with Oberyn being very slim and agile and fighting with a spear while The Mountain is very tall and heavy, wears a heavy armor and is swinging a giant sword.

The illustration of the card represents purpose found through a contrasting experience, a challenge.

Reverse meaning :

Reversed, the Five of Wands indicates a resolution in differences. It may be that one recognizes a past mistake and now feels apologetic about it.

Beware though about sugarcoating and smoothing over the differences with your peers in order to escape the issues. They may reappear again and again until they finally come to terms.

It may also indicate a need to stay on your edge, to pick up a new challenge in order to stimulate your environment and bring more excitement.

Quote :

“Difficulties strengthen the mind, as labor does the body.” ~ Seneca



Upright meaning :

When the Five of wands appears expect some sort of challenge and opposition. It can be a challenge that weighs you down and makes you feel uneasy, like a clash of opinions and arguing uselessly. It can also be a challenge that makes you grow stronger by pushing your limits, like doing that extra piece of homework.

It indicates the need to go out of your comfort zone and find your edge in order to grow.

It can also represent friendly competitive games, like chess or engaging in a lively debate among peers.

Finally it may indicate a need to join forces with others in a cooperative manner rather than a confrontational one.

Six of Wands



Keywords : Success, recognition, reward, win, leadership, positive self-esteem.

The Six of Wands is represented with the final scene of “Star Wars IV : A New Hope.” We can see Luke Skywalker, Han Solo and Chewbacca marching amid a cheering crowd and about to be rewarded medals for having succeeded in their mission.

Upright meaning :

When this card appears in a reading it means feeling proud of your accomplishments. Your hard work has shown results and you enjoy a well-deserved recognition from it. You are seen as a leader and an example of success, with people looking up to you as a model of achievement.

Just be mindful not to let too much pride get in the way of the hard work that led you to your success.

While the Six of Wands signify success and accomplishment, when it relates to a question about the cause of a struggle it often means pride is in the way to manifest your desired outcome.

Finally the Six of Wands is a reminder that even though you have had success and it is good to celebrate, the road is still long to only rest on past glories. You are on the right track and you need to continue your effort with diligence and humility.

Reverse meaning :

Reversed, the Six of Wands means having trouble with leadership. It may be as a leader of a team that you find difficulty managing, or it can be having differences with a member of the team or the leader.

Reversed this card can also indicate too much pride that gets in the way of success.

Quote :

“ The biggest reward of a lifetime is finishing day after day with a smile in you face.”

~ Nuno Rosa

Seven of Wands



Keywords : Persistence, facing opposition, courage, steadfastness, defense, opinion.

The Seven of Wands is represented with Oberyn Martell, also known as “The Red Viper “ from “Game of Thrones.”

He is jumping in the air with his spear and lashing a furious and spectacular attack on his opponent Gregore Mc Lane, known as The Mountain.

Oberyn’s opponent is out of the picture frame and not visible. Oberyn is leaping over the obstacles that are represented by the crooked wooden sticks in the background. He seems to be leaping from a mountain top to reach towards his goal.

He represents courage and facing his opposition with steadfastness regardless of the odds.

Upright meaning :

When this card appears in a reading it means having to take a stand for what you believe in.

Reverse meaning :

Reversed, this card indicates some frustration with your ability to stand up for what you believe in.

There may be trouble with communication in your environment where you easily back down when faced with opposition or you feel blocked in your expression by a figure that has authority.

It can also indicate stubbornness, holding on too strongly on a belief without listening to what others have to say.

Quote :

“It takes a great deal of bravery to stand up to our enemies, but just as much to stand up to our friends.” ~ J.K. Rowling

There are resistances that are working against you, it could be a competitive environment, a critical friend or partner, or your own lack of confidence that prevents you from achieving your goals. You need to fully embrace those challenges and face the opposition as a stepping stone that forges your experience and character.

The Seven of Wands asks you to examine what you truly value . What do you stand for ?

It encourages you to stand firm in your conviction and not back down in the face of criticism. You need to develop courage and you may even need to be aggressive in order to impose your vision of who you are and stand for.

Eight of Wands



Keywords : Energy, movement, speed, flow, air travel, forward, unstoppable, momentum.

The Eight of Wands is represented with Iron Man flying through the sky.

He looks mighty and invincible. Like an eagle he scans his environment from above and locking onto his target with an impenetrable glance.

Eight wands are pointing downwards behind him and symbolize an outburst of energy, a movement and an incredible momentum that is hard to stop once put into motion.

Upright meaning :

When the Eight of Wands appears in a reading there is intense energy at work and things are about to happen quickly.

The Eight of Wands indicates passion and a rush of energy. It is associated with flow, where everything goes effortlessly and naturally.

You are producing great momentum towards a desired outcome and now is a time to be mindful of what you have set in motion because it will be almost impossible to backtrack.

Look for positive signs because things are going your way; the Eight of Wands is an omen of good things to come.

Reverse meaning :

Reversed, the Eight of Wands indicates delays and things not happening the way you want.

You may be waiting restlessly for things to happen and it causes you to be anxious.

Reversed, this card can also indicate an excess of energy and an overactive mind. It advises you to slow down, breathe, and reflect before you take your next step.

Quote :

“You never change things by fighting the existing reality. To change something, build a new model that makes the existing model obsolete.”

~Buckminster Fuller

Nine of Wands



Keywords : Caution, suspicion, resilience, protection, end of the rope.

The Nine of Wands is represented by James Bond/ Daniel Craig from “Skyfall.”

He is seen slouching with his head resting on his arms crossed on a counter of a bar.

He has been badly injured on a mission, and has gone in retreat on a remote island in order to heal from his wounds and gather back strength.

He is watching on TV news, the terrorist attack happening to his headquarters and is planning his come-back. But will he have what it takes ? Will he have enough strength left in order to accomplish his last and final task ?

Upright meaning :

When the Nine of Wands appears in a reading it indicates a need to muster that last bit of strength before accomplishing that one last task.

You may be on the edge of finalising a project or near the completion of something important, yet you feel at the end of your rope. The Nine of Wands shows a resilience and a need to dig deep into yourself to find the energy and courage to finish what you set out to accomplish.

It indicates a need to draw upon your valuable past experiences to help you surmount that last hurdle.

Reverse meaning :

Reversed, this cards indicates assumptions and being on the defensive. It may be due to your past or lack of experience, or someone may have given you bad advice. It is leading you to adopt a close-mindedness and not being open to new input.

It indicates being overprotective and being weary. You may be cynical and expecting the worst of a situation, be wary of self-fulfilling prophecy.

Quote :

“I hated every minute of training, but I said, ‘Don’t quit. Suffer now and live the rest of your life as a champion.’ “ ~ Muhammad Ali

Ten of Wands



Keywords : Burden, hard work, responsibility, weight.

The Ten of Wands is represented by Sam Baggins carrying Frodo on his back from “Lord of the Rings : Return of the King”

Frodo was exhausted carrying the ill-fated ring during his mission to reach the top of Mount Doom. He collapsed while near the top of the volcano putting the mission in jeopardy. Luckily, his faithful friend Sam picked him up to finish their daunting task.

Upright meaning :

The Ten of Wands often appears when we feel burdened by responsibility and we may start to feel resentful due to taking too much load on our shoulders.

We may be too bent on doing things alone or we may be too stubborn or proud to do a thing only one way and we do not ask for help. Beware of being burnt-out or trapped in a narrow way of doing things without the possibility for growth.

This card encourages you to reexamine how you operate and spend your energy and open yourself to different means to achieve your goal.

Reversed meaning :

Reversed, this card indicates a tendency to delay and procrastinate. You may have big goals and dreams but then discard the idea of pursuing them once faced with the difficulty it entails.

It indicates shrugging off responsibilities, and resenting having to do hard work.

It advises you to reevaluate your goals or abilities, look closely at what drives you and motivates you and take step in that direction.

Quote :

“Your burdens are perfectly measured and gifted to you according to your resistance.”

~ Bryant McGill



PAGE OF WANDS

Page of Wands

Keywords : Enthusiastic, curious, outgoing, willing, volunteer, genuine, free spirit, learning, discovery, opportunity, news.

The Page of Wands is represented by Hermione Granger from “Harry Potter : The Sorcerer’s Stone.”

Hermione Granger, is one of Harry Potter’s best friends and is “Muggle-born”, meaning she comes from a non-magical family. She is often bullied by other “supremacist” students that believe her “kind” to be inferior in their talent for magic in comparison to other bred in magician families.

She is very smart and enthusiastic and always eager to learn everything there is to learn about magic. She always feels she has to prove herself more and work twice as hard with her “Muggle” background.

Always a volunteer, she is seen here raising her hand to answer a question in her magical potion class. Her hand raises high to match the height of the wooden wand behind her that forms a gate that symbolizes her entry into knowledge, energy and magic.

Upright Meaning :

As with all the court cards, the Page of Wands can represent a person you know or some aspect of yourself you may call upon.

The Page of Wands is a youthful and very creative person. She has lots of vitality and energy and is learning how to realize her potential. She has lots of talents and interests but needs to channel her energy through creativity. Her tendency towards being too impulsive in expressing her passions can risk to put-off her peers.

In a reading the Page of Wands indicates a fresh beginning, a new venture where everything looks new and exciting. It can indicate someone bringing unexpected news or opportunity.

The Page of Wands is an apprentice and still is on a learning path. She still needs to let go of the need to prove to others her worth. She needs to temper the occasional tantrums she throws to get what she wants and needs to take control of her destiny through creativity and expression instead.

Reverse meaning :

The Page of Wands reversed means a lack of inspiration. You may have a creative block, feel boredom and not know where to start.

In one hand it can indicate that you take things a bit too seriously and need to develop a sense of humor and playfulness about your current situation.

In the other hand it may be that you have too many ideas but don’t know where to begin, or that you have a project in mind but fear the opinion of others and it prevents you from starting anything new.

Quote :

“It’s faith in something and enthusiasm for something that makes a life worth living.”

~ Oliver Wendell Holmes Sr.



KNIGHT OF WANDS

Knight of Wands

Keywords : Flamboyant, rebellious, hasty, speed, adventure, competitive, opportunity, energy, movement, discovery, motivation, action.

The Knight of Wands is represented by Tom Cruise /Maverick in “Top Gun.”

Maverick was a very talented airforce pilot but was also considered risky and unpredictable by his peers and superiors. With his best friend copilot Goose, he grabbed the opportunity to join the elite airforce academy Top Gun after the number one of their promotion after an accident in flight resigned and relinquished his top spot to the academy.

In this card, he is celebrating his new enrolment at the academy by racing down on his motorcycle. He is full of energy, going full speed on a hot summer day and not wearing a helmet.

He represents movement, energy, adrenaline, grasping opportunities, and “the need for speed”

But overall he's the Knight of Wands whose giant spirit we can see in the back charging forward. His horse's head is knocking the lid off the Pyramid revealing its secretive content. It represents making a discovery and fearlessly following the trail of energy, of passion.

Upright Meaning :

As with all the court cards, the Knight of Wands can represent a person you know or some aspect of yourself you may call upon.

The Knight of Wands is a very energetic person with lots of charisma. He is outgoing and expresses himself very directly and with lots of confidence. He has a short attention span and cannot stay in one place nor with a person for long.

He needs constant stimulation, and yearns for adventures and taking risks.

He grows and learns more about himself through seeking new challenges and can be very competitive and temperamental.

In a reading it can indicate an unexpected event, an opportunity that suddenly manifests and needs to be grasped. It may be a new discovery, about oneself or others, or something that is meaningful to you and motivates you to pursue your goal. It also encourages you to balance your excitement with a realistic plan and expectation.

Reverse meaning :

Just like Maverick after he lost his best friend Goose and could no longer fly, the Knight of Wands reversed can indicate being frozen to inaction due to a fear of failure.

It can also indicate being too hasty and reckless and not properly weighing the relationship between cause and effect to a situation.

It indicates a show of impatience where you would like everything to work in your favor right away and encourages you to take it one step at a time.

Quote :

“If you want to find the secrets of the universe, think in terms of energy, frequency and vibration.” ~ Nikola Tesla



QUEEN OF WANDS

Queen of Wands

Keywords : Creativity, independence, passion, influence, friendly, optimistic, energy, strength, manifestation, motivation, awake, magnetism.

The Queen of Wands is represented by movie star Jessica Chastain.

She is sitting comfortably on the grass wearing a long and beautiful deep cobalt blue dress. It gives contrast to her pale white skin and red hair and is alike the fabric of deep space with glowing stars. It represents her “vast like the sky” openness and wakefulness.

She is sitting on the lush grass, grounded like the enigmatic Sphinx holding the key of past traditions and of all things secret. She looks on her left at the floating stars, reading their positions and astronomical meanings.

In front of her is a black cat that represents her mysterious and occult side, her deep interest in the magical and spiritual aspects of life.

Behind her we can still see the spirit of the Queen of Wands sitting in a throne in a yellow robe that symbolizes her solar and energetic power. She is holding a wooden stick that represents the suit and gives her strength and a sunflower that links her with the energy of the sun.

Upright Meaning :

As with all court cards, the Queen of Wands can represent a person you know or some aspect of yourself you may call upon.

In a reading, the Queen of Wands represents a motivating force, an inspiring person or event, it could be you or someone else having that impact. It encourages to follow your passion, your gut instinct about any situation.

The Queen of Wands is a very creative person, with abundant and down to earth energy. She is very confident and values her family and matters of the heart as well as her career.

She is bold and passionate and is a very fun person to be around . She is very generous and her energy is inspiring and uplifting.

She does what she loves and is not afraid to take risks to follow her passion. She has lots of sex appeal that she can sometimes use in order to get what she wants.

Frank and direct in her communication, she can also be quick-tempered and impulsive.

Reverse meaning :

The Queen of Wands reversed often symbolizes a person not in touch with her personal power.

She can use her sexual appeal and popularity to manipulate a situation and belittle those she feels threatened by. She can show jealousy and envy via harsh and unjustified criticism or be callous and insensitive to those in pain around her.

Reversed, she can have a tendency to shift blame and not take responsibility when she makes a mistake or direct her anger at others not at fault.

It indicates a need to get in touch with your emotions and understand what causes you to react in such callous or unjustified manner.

Quote :

“To be awake is to be alive.”
~ **Henry David Thoreau**



KING OF WANDS

King of Wands

Keywords : Visionary, leader, self-reliant, creative, power, confident, risk-taker, expressive, manifestation, intent.

The King of Wands is represented by Keanu Reeves as Don John from “Much Ado About Nothing.”

It is the presence and energy of the actor here that is captured in a still frame that represents the King of Wands personality more than the literal character from Shakespeare’s play.

He sports a red jacket that is textured like the skin of a red salamander, it symbolizes his fiery and inexhaustible energy.

We can see the salamander symbol in the top right corner above the King of Wands spirit. It was the symbol French King Francis I chose for his emblem. In medieval iconography it represented the man who never lost the peace of his soul and could go through the fires of passion unscathed.

It is those very characteristics of maturity, of strength beneath calm, that exhibits Keanu Reeves/Don John in this picture that characterizes him as the King of Wands.

Otherwise, Don John in Shakespeare’s play was a villain that may befit more the description of a King of Wands reversed. He was a central character and main protagonist to the plot yet he had few lines, the story unfolding more around what he has done rather than his actual presence. Yet it is his unfurling of energy and passion that made the play possible and that’s where his path crosses with the King of Wands.

Upright meaning :

As with all court cards, the King of Wands can represent a person you know or some aspect of yourself you may call upon.

The King of Wands is about energy, passion, having a vision and putting plans into action. He is very adamant about pursuing his creative vision and is a charismatic leader. He follows his instincts and he’s not afraid to take risks. He loves challenges and is a man of action.

He is a very curious and honest man; he is very devoted to his career, family and love. He lives life to the fullest and loves company.

Though a bit of a gambler, he is always frank, honest and straightforward. He always expresses his feelings and can have a fiery temper.

In a reading it encourages you to state clearly your intention in order to manifest your vision more rapidly and clearly into the world.

Reverse meaning :

The King of Wands reversed indicates someone inauthentic, a bit of a phony and manipulative. It is where Don John fits more the description.

It describes a person that has trouble knowing what he wants and is involved in risky behavior. It indicates being pushy and setting the bar too high with expectations on others.

It encourages you to develop empathy and patience with the people that may not have as high of an energy drive.

This card also indicates not following on one’s promises or not “delivering the goods” and using excuses and charisma in order to sidestep the issues.

Quote :

“Why join the navy if you can be a pirate?”
~ Steve Jobs

Ace of Cups



Keywords : Love, intimacy, joy, spirituality, romance, heart, emotions.

The Ace of Cups is the first card of the suit of Cups. The suit of Cups represents feelings and emotions and its element is water.

The card is represented by a golden cup where two white doves sit on top of its rim cuddling and kissing below a magnificent rainbow.

Sparkling drops of water pour over them from the pink waterfall behind. Four pink and fully bloomed lotus sit at the base of the cup, and symbolize the strength of their union that can endure challenges.

In front, we can see a spirit angel from the movie "It's a Wonderful Life," who blesses with love the couple embracing.

Upright meaning :

When the Ace of Cups appears in a reading it means there is a potential, an opportunity that needs to be grasped in order to be manifested in your life.

This card in a reading indicates love, union, and friendship. It represents intimacy and an out-pouring of emotions, heart-felt emotions like a long awaited reunion, a romantic outing or a love letter.

It calls for you to nurture love, you, and everything that makes you feel joy. It can also indicate to you to make a fresh start in your relationship or express what your heart tells you, even if it were to cause you some tears.

Reverse meaning :

Reversed, this card indicates an outpouring of emotions that does not affect you positively. You may be oversensitive and overreact childishly.

It is a reminder not to fall into a victim mentality to circumstances, and even if you feel powerless to change them you can always choose to change the way you react and are affected.

This card can also indicate being drained and feeling void because the cup is tipped downward and empty.

Quote :

"Be drunk in love since love is everything that exists" ~ Rumi

Two of Cups



Keywords : Connection, union, friendship, sharing, support, trust, relating.

The Two of Cups is represented by Claire Danes and Leonardo DiCaprio in, “Romeo and Juliet.”

Romeo is wooing Juliet with his romantic words.

Their eyes are interlocked in a deep and intimate connection with only the two golden cups between them that they drink from together.

The caduceus, a traditional symbol of Hermes, with a lion head in its center, is the symbol of strength in their blessed union. It represents flow, exchange, a natural harmony, a sharing of ideas and mutual gifts.

A reflection of the couple on the surface of the water pond represents the transparency and flow of their deep bond.

Upright meaning :

The Two of Cups is a card about relating, it represents union, sharing, a coming together as friends, partners, or lovers.

It represents a balance and a coming to an understanding between two or more people where emotions flows freely and are naturally expressed.

It indicates a connection based on trust and emotional support.

The Two of Cups can represent relating with someone and getting to know that person better. It can also indicate a time of reconciliation where one puts down his armor of defenses and is willing to reengage conversation in loving terms.

Reverse meaning :

Reversed, the Two of Cups indicates imbalance and disharmony in a relationship, whether it is with friends, lovers, or partners.

You or your partner may be closed off to communication in order to avoid a painful confrontation. There may be an imbalance in power and attraction in the relationship.

It can indicate wanting to take some space away from your partner.

Quote :

“A dream you dream alone is only a dream. A dream you dream together is reality.”

~ John Lennon

Three of Cups



Keywords : Fun, celebration, friendship, party, dance, rejoicing, honouring, success.

The Three of Cups is represented with a scene from “Mamma Mia” where Donna/Meryl Streep is jumping out of sheer joy and fun, on top of her bed, with her friends singing and dancing.

They are giving each other high fives, and support each other in their ritual of celebration. They are in perfect alignment with each other and stand solid like a pyramid with Donna ascending blissfully more and more with each jump and hymn of celebration.

But what are they celebrating ?

They are celebrating their unimpeded, natural, child-like and joyful self. Always spontaneous and a tad mischievous, they are celebrating life and the fun of it.

Upright meaning :

When the Three of Cups appears in a reading it is a time of rejoicing and honouring of your friendships.

It is a card that celebrates your friendships and the support you have. It calls you to give due gratitude to your friends, and honour the special place they have in your life. Don't hesitate to let them know through a kind gesture, a call or an outing

It can indicate new and fresh friendships to come, or merry news like an engagement or a wedding.

Finally it can indicate growth and learning that involves more than two people.

Reverse meaning :

Reversed, this cards indicates trouble with friendships, or association with a group of friends who have a negative influence on your well-being

It can indicate excessive partying or feeling left out and isolated.

There can be a feeling of rivalry between a new member in your circle of friends . It can also point to a troublesome threesome in a relationship.

Or, it can indicate isolating oneself from social gatherings and missing opportunities of creating new friendships due to working too much.

Quote :

“Eat, drink, and be merry for tomorrow we'll die” ~ Dave Matthews

Four of Cups



Keywords : Contemplation, stand-by, waiting, daydream, boredom, rejuvenating, blank state.

The Four of Cups is represented by Liv Tyler in her role as Lucy from “Stealing Beauty.”

In the card, she is sitting by a tree revealing one breast as she models for an artist’s wooden sculpture.

She is contemplative and filled with unanswered questions in her mind. In the movie, she was wondering who her true father was, as well as pondering about her many potential lovers that were interested in helping her lose her virginity.

In the card, a spirit holds a golden cup close to her ear, symbolizing that the answers to her questions lay right there in her environment. She only needs to pay more attention to all the clues that are surrounding her.

Upright meaning :

When the Four of Cups appears in a reading it is a time for contemplation, taking a step back from a situation, and emotionally detaching from it in order to see things more clearly.

You may feel the need to withdraw because you feel emotionally burdened or drained and cannot see the situation objectively.

This card indicates to gather your strength in a quiet place by cultivating a receptive and open attitude, for the answers you seek will naturally come to you.

Nonetheless, be mindful to not get stuck in retreat and isolation. Come back to the world of actions, the answers you seek are also there.

Reversed meaning :

This card reversed indicates being burnt-out by a situation and desperately needing to seek a quiet place to retreat . Or, it represents staying away too long in order to avoid having to confront an emotional situation that needs to be dealt with.

You may be staying away on a vacation too long. So long in fact, that its to the point of feeling stagnant while the world awaits you to still share your many gifts.

It can also represent having the feeling of being taken for granted in a relationship where you feel you are doing most of the giving.

Quote : “If there were a little more silence, if we all kept quiet...maybe we could understand something.” ~ Federico Fellini

Five of Cups



Keywords : Fear, loss, disappointment, grief, melancholy, guilt, self-absorbed, distress, sadness, closed.

The Five of Cups is represented by a collage of two characters.

The character in the foreground is Jedi master, Qui-Gon Jinn, from Star Wars Episode 1, played by Liam Neeson. In the background, set up like a drive-in movie screen, is melancholic singer Lana Del Rey, laying half-dazed in her car.

Both of the characters look downward, their faces closed and self-absorbed in sorrow. Their overall tone of colors are blueish and represent their state of sadness for having experienced a loss of some kind.

Three of the five golden cups are laid down on the ground spilling their content, which represent loss, while two other cups are still standing and represent remaining hope.

Upright meaning :

The Five of Cups represents a sense of loss. There may be feelings of sadness and grief where something close to the heart has been lost. It could be a loved one, a dream, an aspiration, or a cherished possession.

It indicates difficulty moving on from those feelings and being self-absorbed

The Five of Cups here can also represent feeling guilty over a past behavior that does not serve you and others well. You may feel regret or have some resentment that you still mull over and causes you to close down.

Finally, the lesson is not to remain stuck in your past or negativity, but to cultivate the ability to open in the midst of deep closure; to grow.

Reverse meaning :

This card in reversed position indicates being ready to move on with some past issue or sorrow.

It indicates that one is ready to accept and forgive oneself and others in order to move on.

Feelings of disappointment may still linger, but you are more able to move past them and develop a hopeful attitude.

Quote : "I love those who can smile in trouble, who can gather strength from distress, and grow brave by reflection 'Tis the business of little minds to shrink, but they whose heart is firm, and whose conscience approves their conduct, will pursue their principles unto death." ~Leonardo Da Vinci

Six of Cups

Keywords : Memories, childhood, nostalgia, the past, friendliness, simplicity, protection.

The Six of Cups is represented with a scene from the movie, "My Girl." where Thomas, played by actor, Macaulay Culkin, is kissed for the first time by Vada played by Anna Chlumsky.

In the scene, Vada asks him if he ever kissed anyone to which he replies: " like in the movies ? " then says no and that he doesn't know how. She then asks him to practice by kissing his bare arm and to close his eyes. It is when she kisses him and he remained silent afterward. She urges him to say something, anything to break that uncomfortable silence. He then stood up and recited The Pledge of Allegiance of the United States, to which she joined in.

Here, they are surrounded in a bubble, that looks like a snow globe with bright star dust sprinkling around. That day they pledged never to forget that moment that will remain in their heart forever



Upright meaning :

The Six of Cups is a card about fond memories and feeling nostalgia about a past friendship or relationship and the good times you have had together.

What was relevant about that joyful past experience that can apply to you now ?

This card represents innocence and the childlike aspects of your personality that helps you navigate life with a carefree and simple attitude.

It can also represent the need to create a sacred space where you can nurture yourself and feel in your cocoon.

Reversed meaning :

Reversed this card indicates blocking past memories that may feel painful. You may be repressing some emotions around a past situation and choose deliberately not think about it nor face it.

You may act childishly by giving someone the silent treatment or not being kind with that person. It indicates a need to engage in a mature conversation about the differences you may have.

Overall, it points to immaturity, and being fussy about petty things.

Quote :

"Adults are just obsolete children and the hell with them." ~ Dr. Seuss"

Seven of Cups



Keywords : Illusion, choice, dreams, fantasies, altered states, imagination, visualizing.

The Seven of Cups is represented by Sarah played by Jennifer Connelly in a scene from the movie “Labyrinth”.

She looks up at the many stairs that are entangled in a M.C Escher like pattern and does not know what path to take in that magical maze.

In front of her lay four golden cups, while three others lay spread apart among the stairs. Do they indicate a path to take ?

In the foreground, there is a silhouette of a man holding what seems to be a paintbrush. Is he the instigator of that dreamlike situation ?

Upright meaning :

The Seven of Cups represents illusions and fantasies. It often indicates having to make a choice between many different alluring possibilities, but not knowing yet what to do.

It indicates being caught up with projecting too far ahead, or dreaming up too many possibilities and advises you to cultivate a more down to earth approach to life.

It can also represent visualization, creativity and altered states of consciousness. While there is a place for experimentation, it is also a warning not to abuse substances in detriment of health or for escape of reality.

Reverse meaning :

Reversed, the Seven of Cups indicates escaping and losing touch with reality due to a feeling of inability to create a brighter future.

You may feel stuck or bored, and rather not think about your situation and choose numbing out instead. It encourages you to conjure up your imagination and visualize the reality you would prefer to create for yourself.

Quote :

“I have too many fantasies to be a housewife.... I guess I am a fantasy.” ~ Marilyn Monroe

Eight of Cups



Keywords : Moving on, retreat, leaving behind, abandonment, letting go.

The Eight of Cups is represented with Frodo from “ Lord of the Rings : Return of the King.”

Frodo had the arduous task of carrying the cursed ring to Mordor for its destruction. The powerful magic of the ring led him to not trust anyone that came near it, even his best friend Sam.

After being manipulated by an envious creature named Gollum, he decided to continue the rest of the journey without Sam.

It was a very painful choice he felt necessary for the good of his mission and remains deeply affected by it.

Upright Meaning :

The Eight of Cups is a card about moving on and leaving something behind. It might have been a voluntary choice yet it does not make it any less painful.

It indicates a need for time alone in order to contemplate the state of one's emotions and whether moving on from the painful situation is still the best route to take.

You may feel weary or disappointed about a situation, or are in a process where you need to reconsider certain hopes and dreams you had.

Reversed Meaning :

Reversed, this card indicates clinging to a situation or a person too hard and a fear of letting go.

It often indicates some form of codependency where you may continue to hope things will get better while remaining in that situation when disappointments keep repeating themselves time and time again.

This card reversed simply means that you are trying too hard.

Quote : “Well, here at last, dear friends, on the shores of the Sea comes the end of our fellowship in Middle-earth. Go in peace! I will not say: do not weep; for not all tears are an evil.”
~ J.R.R. Tolkien, *The Return of the King*

Nine of Cups



Keywords : Satisfaction, smugness, comfort, well being, visualizing, manifestation, success.

The Nine of Cups is represented by a black silhouette of Mickey Mouse filled with stars.

He stands in front of a blue curtain with arms crossed as if to state : “ This is my show ! “
Nine cups are kept in a row above his head like trophies and are a statement of his success.

He has won many awards and prizes and is proud to show it. His two eyes made of stars are shining brightly.

Upright meaning :

The Nine of Cups indicates satisfaction, comfort and success.

You may feel like being on top of the world with recent accomplishments. Yet this card comes as a warning not to fall in the trap of being too comfortable with your recent success. Smugness and bragging may put-off your entourage.

This cards also indicates to visualize your success in order to manifest it in your life.

Reverse meaning :

Reversed, this card indicates too much pride and greed as an obstacle to your growth.

You may catch yourself constantly looking at what others have and feel envious. It points to a sense of lack and never being satisfied.

It encourages you to take notice in what you already have and cultivate gratefulness and sharing your blessings before you can manifest more.

Finally it can also indicate using happiness in a show-off, braggart way to belittle or hurt others.

Quote :

“We are rarely proud when we are alone.”
~Voltaire”

Ten of Cups



Keywords : Happy home, family, fulfillment, sharing, joyful union.

Ten of Cups is represented with the final scene of a family reunion from “ It’s a Wonderful Life “

Main character George Bailey, after a series of disappointments, wanted to commit suicide on Christmas eve. An angel appeared and took him through a long journey that showed him how important he was, the impact he had on other people’s lives and how different life would be in a world without him.

In this final scene he comes back victorious from his journey and a changed man. He is reunited with his joyous family to celebrate Christmas , and feels like the happiest man in the world.

Upright meaning :

The Ten of Cups represents Home. It indicates being grateful and fulfilled and spreading that joy in your home environment.

It is a card about sharing one’s happiness, feeling connected with loved ones, emotional security and being grounded with family and home.

It indicates that you are always loved and supported and only need to pay more attention. You do not have to do everything alone and feel burdened. This card is a reminder that we don’t have to endure struggles alone and there is always a solution at hand.

Reverse meaning :

Reversed, this card indicates self-pity and insecurity in relationships.

You may feel like there is always something missing and cannot enjoy what you have.

You may keep pursuing unrealistic dreams that puts more burden on yourself and your entourage.

It can also indicate trouble in a relationship where one is abusing feelings. It can mean a separation, like a divorce or feeling isolated from the home.

Quote :

“Home is the nicest word there is.”

~ Laura Ingalls Wilder



PAGE OF CUPS

Page of Cups

Keywords : Sensitive, romantic, emotional news, messenger, kind, brave, honest, creativity, new beginnings

The Page of Cups is represented by Cedric Diggory, played by Robert Pattinson in “Harry Potter and the Goblet of Fire.”

The wise wizard Dumbledore described him as : “We’ll celebrate a boy who was, kind and honest, and brave, and true right to the very end.”

Cedric Diggory was picked as a Champion to represent Hogwarts during the Triwizard tournament.

Before the tournament, Cedric was informed by Harry that the first task was to get past a dragon. Cedric was the only Champion not to be aware of it, and even though competitors, Harry felt it was only fair to tell him so everyone would be on an even footing. In a later task, Cedric repaid him kindly the gesture by informing Harry on how to decrypt the message from the golden egg.

In this card, the Page of Cups stands erect, with a blank stare, showing no emotions. His face is pale and a golden cup stand by his ear as a symbol to listen to his intuition. We are not sure if his blank expression is a sign of strength or if it is a wall he has put-up in order to numb out his true emotions.

Upright meaning :

As with all court cards the Page of Cups can represent a person you know or some aspect of yourself you may call upon.

The Page of Cups is youthful and sensitive. He is very imaginative, intuitive and a romantic.

He may appear strong and stable for his age but can be emotionally needy and naive when it comes to romantic relationships. He loves sharing his dreams no matter how far-fetched they are.

It can indicate a new creative endeavor, a project, or the desire to find a creative outlet like singing, dancing , writing or painting.

This card can also indicate emotional news, like a date, an engagement or a love letter.

Reverse meaning :

Reversed, the Page of Cups indicates emotional immaturity.

You may feel insecure or needy. It indicates being overly centered on yourself and being caught in either playing the role of the pleaser or putting too great expectations on others.

It indicates being emotionally unbalanced, and being protective of your emotions due to fear of being hurt.

Finally, it encourages you to call upon your gift of imagination and intuition to move past that protective wall of emotions.

Quote : “It is because I think so much of warm and sensitive hearts, that I would spare them from being wounded.”

~ Charles Dickens, Oliver Twist



KNIGHT OF CUPS

Knight of Cups

Keywords : Idealistic, charming, seduction, poetic, romantic, imagination, artistic, mystery, secrets, messenger, dreams.

The Knight of Cups is represented by Vincent Freeman, played by Ethan Hawke, in "Gattaca".

Taking place in a futuristic society where parents were selecting genes to conceive their ideal child, Vincent was born the "old-fashioned way." Unfortunately, he was born with a heart condition that would prevent him from realizing his long-standing dream to become an astronaut. He then decided to hide his disability by adopting a new identity in order to achieve his dream against all odds.

In the background, we can see the space shuttle taking off in the starry sky. Its trajectory seems to form an invisible pyramid with the contrasting colors of the purple sky. A golden cup and a red rose are sitting at the base of that invisible triangle as if representing sacred offerings to deities.

After realising his lifelong dream to fly to space on a one-way ticket he declared : "For someone who was never meant for this world, I must confess I'm suddenly having a hard time leaving it. Of course, they say every atom in our bodies was once part of a star. Maybe I'm not leaving... maybe I'm going home."

In the card, a hand lays gently over his back, maybe it is to offer him support or comfort, or is it to cover up a wound or a secret ?

Upright meaning :

As with all court cards the Knight of Cups can represent a person you know or some aspect of yourself you may call upon.

The Knight of Cups is romantic, imaginative

and idealistic. He loves art, beauty and is a dreamer. He follows his heart and loves sharing his ideal vision of the world.

He is sensitive and can easily fluctuate in his state of emotions. Especially when his dreams are being faced with opposition.

He engages life following his intuition and his passion, but does not think with a long-term approach or vision.

The Knight of Cups is often associated with romance but can also symbolize mystery or holding a secret.

Finally, this card can indicate an emotional news, or an invitation to participate in a co-creative space where sharing of emotions and creativity are important.

Reverse meaning :

Reversed, the Knight of Cups indicates oversensitivity and being "flighty".

You may either show excessive emotions or are blocking them. Either way, it is preventing you from moving forward and getting things done.

It can also indicate going from place to place, or relationship to relationship, with no particular goal or desire to form any attachment or any interest to develop a deeper bond.

Quote :

"Everything you can imagine is real."

~ Pablo Picasso



QUEEN OF CUPS

Queen of Cups

Keywords : Compassion, receptive, healing, dreamer, affectionate, sensitive, virtue, intuitive, counseling, empathy, psychic, love, kindness.

The Queen of Cups is represented by classical beauty actress Audrey Hepburn.

She is posing and looking straight with deep and dreamy eyes. She is in tune with the flow of her blue colored environment that features water and ethereal shapes. Her transparent spirit can be seen sitting on a throne with a golden cup sitting at her feet and being filled constantly by the ethereal space made of stars.

Upright meaning :

As with all court cards the Queen of Cups can represent a person you know or some aspect of yourself you may call upon.

The Queen of Cups is a wise, sensitive, receptive mature person. She is very intuitive and in tune with her emotions. Her psychic gift makes it easy for her to read into a person's concealed emotional state or agenda.

She is very creative, spiritual and imaginative.

She pays attention to synchronicities that occur in life and the recurring symbols within dreams, and can interpret their meaning with ease.

She is very motherly and connected to her heart. Soothing and compassionate she makes for a very good counselor and healer.

Nonetheless, she can be moody at times and even emotionally manipulative when upset.

In a reading, this card can also indicate feelings of love or affection for someone that are hard to deny.

She represents the need to be in touch with your emotions before making an important decision.

It indicates that you need to use your gift of empathy, and try to put yourself in the other people's shoes in order to better understand their feelings.

Finally, it urges you to call upon your divine and compassionate self and to manifest who you truly are or want to be into the world.

Reverse meaning :

Reversed, the Queen of Cups can be a deceitful and emotionally manipulative person.

This card indicates having trouble setting clear and healthy boundaries with your peers, romantic partner or other.

It indicates being pushed and pressured emotionally and taking on other people's emotions to the point of not being able to form healthy boundaries.

It advises you to leave toxic relationships or behavior and rebalance yourself.

Quote :

“Be kind, for everyone you meet is fighting a harder battle.” ~ Plato



KING OF CUPS

King of Cups

Keywords : Balance, emotional strength, healing, calm, understanding, detachment, counselor.

The King of Cups is represented by actor Tom Cruise.

The King of Cups is posing with authority and presence with his hand resting firmly on the base of his throne. He is very grounded emotionally and energetically. Whether it is the case in the actor's private life, we may not know, but in the image here, he conveys have all those qualities. Behind, we can still distinguish a faint outline of the golden crown from the previous spirit of the King of Cups.

The golden cup is floating in the air as by sheer magic conjured up by the powerful King.

A rainbow arches above his head in the background and ends into the cup. It is a symbol of magic, art, imagination and power. A red rose, next to his left arm, symbolizes his heritage, the tradition he is passing on.

Upright meaning :

As with all court cards the King of Cups can represent a person you know or some aspect of yourself you may call upon.

The King of Cups is a wise, emotionally mature person. He is very observant, and a good listener. He cares for the home and usually makes for a good husband or father.

He is very creative, spiritual and imaginative. He loves arts and loves to create and share beautiful things. He is generous and kind at heart.

He is calm and beneath his detached appearance and silence lays inner strength.

His company restores balance and has a soothing

influence.

He attracts many people wanting to be around his healing aura. Nonetheless he needs to be careful about not being too detached or passive, and keep an alert eye at his surrounding. His tolerance for bad behavior can sometimes play tricks on him and can affect his close entourage by letting them be exposed to negativity.

In a reading, it indicates that you need to use your understanding of emotions in order to deal with situations. Use your calming influence, your objectivity and ability to detach from situations to your best advantage.

Finally it urges you to call upon your divine emotional strength to heal aspect within you and others and to manifest that gift into the world.

Reverse meaning :

Reversed, the King of Cups can be a closed and emotionally unavailable person. He may keep his feelings hidden to others or himself as well. He may put on a face of being a rock on the outside just to conceal some pain within.

It indicates a fear of being hurt again and putting a wall of defense around one's heart.

It can also indicate being overly emotional and wallowing in self-pity, being overbearing to others or overly possessive.

Quote :

“You are the sky. Everything else – it's just the weather.” ~ Pema Chödrön



Ace of Swords

Keywords : Power, clarity, breakthrough.

The Ace of Swords is the first card of the suit of Swords that represents the realm of the mind. Its element is air. It is represented with the sword Excalibur from John Boorman's movie, "Excalibur."

In the movie, in search of a worthy king, 'never defeated' knight, Lancelot, was blocking a bridge preventing King Arthur and his troops from passing over. All the troops had to duel against Lancelot, but lost. King Arthur then went up to face Lancelot himself, but seeing he was about to lose, the King called upon Excalibur's power to defeat Lancelot. King Arthur succeeded, but at a cost. He broke the unbreakable. He broke Excalibur.

Realizing how vain it was to abuse Excalibur's power, the king cried for forgiveness while throwing the broken sword into the lake.

It is then that Excalibur reemerges from the lake in one piece. In the hand of the Lady of the Lake, who is returning the magical sword, it pierces through the water and the starry sky with a greenish magical glow that beamed into infinity.

Upright meaning :

When the Ace of Swords appears in a reading it means there is a potential, an opportunity that needs to be grasped in order to be manifested.

Whoever yields the Ace of Swords possesses great power, with it one can totally change the outcome of any battle or situation. Yet, it can be double-edged, when not used for the greater good, but instead for one's vanity as did Arthur.

This card can also indicate a new understanding, a new perspective that makes things clear. Just like Arthur, after abusing power, he understood he needed to cultivate more humility.

Reverse meaning :

Reversed this card indicates a situation where truth is unclear. There could be a misunderstanding where all elements are not known.

It indicates a warning and the need to slow down before making any major decision.

There still may be confusing elements or too many diverging opinions that prevent you from thinking clearly. It advises you to not give in to pressure from others and provocations. It may also be wise to disengage from any aggressive situations.

Quote : "The day the power of love overrules the love of power, the world will know peace." ~ Mahatma Gandhi

Two of Swords



Keywords : Conflicting ideas, indecision, block, choice, impartial, closed off, numb.

The Two of Swords is represented by movie character, Edward Scissorhands, played by Johnny Depp.

Edward was created by an inventor that died before he could finish his hands. He had scissors in place of real hands. He lived as an outcast and was feared by the community in his neighborhood, except for the Boggs family. Especially Kim, their teenage daughter, who he had a crush on.

In the card, he has his hands tied behind his back, as if to hide his hands made out of scissors. He stands like the “dark angel of choice” with two blades on his back instead of wings.

Kim’s hands are gently posed over his chest, and if we look closely, there is a faint black question mark in between. It symbolizes his fear to reciprocate her embrace due to the risk of causing her harm.

In the background, a crescent moon lurks in the night sky, which is made of a seascape and represents hidden emotions.

Upright meaning :

The Two of Swords indicates being conflicted with choice and not making a decision.

You may not want to hurt or offend someone in expressing what you truly feel and rather stay silent. Or you may feel undecided and not ready to take on an important decision.

It represents the need to take some space and contemplate one’s option.

You may also be ignoring your true feelings and are not yet ready to assume them for it would mean too big of change for you and too soon.

It advises you to think more rationally and let the question mark, that lays in your heart, have some space to resolve itself.

Reverse meaning :

Reversed, this card indicates making a decision based on emotion and not with rationality.

You may feel pressured to make a decision and not use your best judgement nor listen to rational and sound advice.

It advises to take distance from an emotionally charged situation and not engage in what you may feel is right as it will make things more chaotic at this time. It encourages you to let any issues settle and think through them more rationally before reengaging.

Quote : “When people don’t do what they want, they don’t know what to do.”

~ Marty Rubin

Three of Swords



Keywords : Heartbreak, loss, sorrow, sacrifice, separation, grief, rejection, pain.

The Three of Swords is represented by actor Robin Williams.

His clown make-up is a sad face and a teardrop below his right eye. He is sad and in pain.

Thundering clouds lay behind him and a big red broken heart pierced by three invisible swords lay on top of his chest. The swords and the heart almost look like a Captain's wheel from a boat, with Robin at its command, amid a thunderstorm. It represents your emotional compass.

A few gaping holes inside the clouds are letting the light shine through, as a reminder that there is always some hope to reach for and that there is light behind our darkest clouds.

Upright meaning :

The Three of Swords represents a difficult loss, a heartache. It can be a relationship breakup, an unemployment, or grieving over someone we love.

Reverse meaning :

Reversed, this card points to a sense of sacrifice, a feeling of giving up something.

You may have experienced a difficult loss and you are now beginning to move past painful feelings.

It can also indicate a feeling of relapse after having initially moved on after a difficult loss, separation.

Quote :

“I love you forever. I am sorry I cannot love you now.”~ Nick Harkaway, Angelmaker

“A calm sea does not make a skilled sailor”.

The loss may be voluntary and a conscious decision, yet it doesn't make it less painful.

The Three of Swords indicates emotional pain. It encourages to look at pain as an integral part of oneself and not be afraid or shameful of it in order to be able to move past it.

It also indicates a need for release or letting go of a certain way of thinking to examine our many assumptions about a particular painful situation

Finally it encourages to look beyond the darkness and focus your attention on anything that can bring a sense of relief instead. The shimmers of lights, though they may seem sparse at first, will grow more and more as you sharpen your ability to focus upon them instead.

Four of Swords



Keywords : Rest, sleep, mental respite, healing, “sleep on it”, self-reflection, meditation.

The Four of Swords is represented with a scene from the Matrix movie where Neo is being healed and regenerated.

In this scene, Neo had just woken up from The Matrix. He woke up from an illusory world to step into a new world where he has never used his body before. He has many questions in need of being answered.

He also needed to regenerate his muscles and heal wounds and trauma associated with his rebirth. His body was laid on a table with thousands of needles treating his body similar to acupuncture. Here he is seen floating above the table with the vastness of space in the background. Three invisible swords pierce through his forehead, mouth and throat, and a fourth one is resting underneath his bed.

They represent the connection between body, mind, spirit and his thoughts being put to rest.

Upright meaning :

The Four of Swords represents taking a rest, a mental respite. Whatever is going through your mind, whatever issue or situation that may keep your mind busy, it advises you to “sleep on it.”

It is not a show of weakness or laziness to take a nap or rest, when stress has put a burden on your body, mind, and spirit; it is necessary to take a time out.

Take the time necessary to recuperate and strengthen yourself before carrying on to your mission or duties. You may need to see a specialist, a physician, a therapist, or a healer in order to regain your full capacity and experience clarity and well-being again.

Reverse meaning :

Reversed, this card points to mental overload, and being burnt out.

It indicates a constant delay, where you always need to do that “one last thing” before you can seek any respite.

It points to a need to prioritize and not try to do too many things at once.

It can also indicate absent-mindedness, where one is there without being really “there.”

Quote :

“Make rest a necessity, not an objective. Only rest long enough to gather strength.”

~ Jim Rohn

Five of Swords



Keywords : Resistance, ego, scattered mind, pride, betrayal, stubborn, winning at all cost, defeat.

The Five of Swords is represented by the Joker, played by Heath Ledger, from the movie, “Batman, the Dark Knight.”

We can see him walking away from the hospital he has just blown up. Still in his disguise as a medical staff member, he looks at the scene with a show of disdain.

Five invisible swords are scattered around him. They represent thoughts and the mental plane. Two are planted on the back of his head, with one shorter than the other, they represent his hidden agenda and comparative mind. One is alongside his arm with the handle facing straight at his face and is the symbol of the constant opposition he feels; his resistance. Another sword is in his belt and represents his weapon to attack with. The fifth sword is on the ground next to a figure whose back is turned and moving away from the scene which represents defeat of his opponent.

Upright meaning :

The Five of Swords represents resistance and the need to win. In this card, resistance is defined as a need to control all aspects of a situation.

You may end up being the winner but at what cost? You may lose friendships in the process, or subject yourself to isolation from your peers, and need to ask yourself if it is worth it.

It indicates a certain stubbornness in your way of thinking. This can sometimes work in your favor if you have been pursuing a project you really want to see to its end. But it most likely will keep you stuck in your inability to open to other options and listen to other people’s valuable input.

It can also relate to a betrayal, from you or someone you were close to and trusted.

Reverse meaning :

Reversed, this card points to a sense of guilt, and wanting to make up after a disagreement or a fight.

Yet, you may not be fully ready to make the first step to apologize, it points to some lingering pride even though you may want to make peace.

It indicates a need to reflect and have an honest conversation with whoever you have disagreements with.

Quote :

“Make your ego porous. Will is of little importance, complaining is nothing, fame is nothing. Openness, patience, receptivity, solitude is everything.” ~ Rainer Maria Rilke

Six of Swords



Keywords : Retreat, space to heal, transition, taking space, rite of passage.

The Six of Swords is represented by the character Arwen from the movie, “The Lord of the Rings.”

Arwen was the daughter of elf king Elrond and was in love with Aragorn, a human and also the future king of Gondor and Adorn. “The war for the ring“ had begun and he was away in a perilous mission.

Arwen stayed with her father Elrond in elvish land Rivendel. While there, Elrond showed her a vision of her life after Aragorn’s death even if he were to succeed in his mission. He showed the sadness and emptiness of her life with her being immortal and him a human. He urged her to follow him to the “undying lands“ or Aman, a place of retreat for the elves during war.

We can see three successive expressions of Arwen’s face right before her moment of departure and in the last image she is crying. Her head is covered with a blue hood from her traveler’s cloak and represents deep emotions of grief.

Upright meaning :

This card, with six swords firmly planted upright, represents the firm decision to retreat and move away from a situation. Even though the decision is a conscious one, it is still a painful one. It is not what one may prefer to do in one’s heart but is what serves the situation best for everyone’s interest. Knowing this can make it an even more painful experience

It can indicate literally moving away, taking physical distance and traveling.

It indicates a time of transition where one seeks to restore oneself and heal from a past situation. It may seem like a difficult time to go through, but once on the other side, you may find yourself feeling great relief for having done so.

Reverse meaning :

Reversed, the Six of Swords indicates being stuck in a dilemma or an unpleasant situation. It points to a fear of change which prevents you from taking the necessary steps to move away from a situation that no longer serves you.

It indicates a fear of the unknown, choosing what is familiar, and where you have invested much emotional energy already, even though it may be a chaotic and unhealthy situation.

It can also indicate delays in travel; postponement.

Quote : “There is a sacredness in tears. They are not the mark of weakness, but of power. They speak more eloquently than ten thousand tongues. They are messengers of overwhelming grief and unspeakable love.” ~ Rumi

Seven of Swords

Keywords : Deception, manipulation, strategy, breaking agreement, sneaking behind, lies.



The Seven of Swords is represented by actor Leonardo DiCaprio who plays the character Jordan Belfort in the movie, “Wolf of Wall Street,” and also actress Anne Hathaway who plays Catwoman in the Batman movie, “A Dark Knight Rises.”

In this card, Belfort is holding a glass of wine and looking off to the side.

In the movie he is a successful trader in Wall Street suspected of fraud and investigated by the FBI.

Behind him lurks the silhouette of Catwoman sneaking around and on the prowl for her next endeavor.

Both are scheming and planning their next mischievous move.

Upright meaning :

The Seven of Swords indicates mental strategy to serve your own end.

Reverse meaning :

Reversed, the Seven of Swords indicates a form of regret and choosing to do the right thing.

You may have been involved in a plan or behavior that you are not proud of and now feel regret over it, or it could be that you had an opportunity but needed to pass due to the deception involved.

It can also indicate being caught in a deceptive manipulation or lie and now have to face the dire consequences of it.

Quote :

“Never attempt to win by force what can be won by deception.”

~ Niccolò Machiavelli, The Prince

It could be that you are using manipulative and deceptive means or are sneaking behind one's back in order to serve your cause. It indicates not being upfront and transparent with someone or that someone is not telling you everything. It points to things hidden for a purpose, and of possible lies.

Strategy may sometimes be called for, in order to deal with a situation, but it comes as a warning to be mindful of the impact that your actions have with all the people involved.

This card can also mean when someone is not doing original work, but instead taking a shortcut by copying someone else's work and then taking credit for it. It calls you to be mindful of the difference between having genuine creative influence and plagiarism.

Eight of Swords



Keywords : Victim mentality, isolation, excuses, limiting belief, restriction.

The Eight of Swords is represented by Anne Hathaway in her role as Maggie in the movie, “Love & Other Drugs.”

In the movie, Maggie suffered the early onset of Parkinson’s disease. She was in love with a man named Jamie who was supportive of her illness. However, she felt he would only fully love her if there was a hope for a cure, so she decided to break up with him.

In this card we see her holding her stomach, the center of her emotions where she feels grief at her painful decision to break up.

Upright Meaning :

When the Eight of Swords appears in a reading it indicates limitation and restriction based on self-limiting beliefs.

It indicates a resistance to move forward and adopting a victim mentality due to putting too much

importance on certain circumstances or the opinion of other people. You may have adopted a habit of narrating, to yourself and others, the same “story” of your painful or negative situation to the point where it prevents you from seeing anything else and you can’t move on.

It indicates a resistance to change and holding firmly to a belief that doesn’t serve you.

It encourages you to look within and question what is being gained from repeating the same story to yourself and others. What can you gain out of remaining “stuck “?

It encourages you to use your imagination and tell yourself a more positive “story” in order to free yourself from destructive patterns.

Reverse meaning :

Reversed, the Eight of Swords points to a new self-awareness about how thoughts can create your reality.

It indicates coming to terms with old, self-limiting beliefs that no longer serve you and also cultivating a habit of thinking positive thoughts; instead of adopting a negative narrative to yourself and others.

Reversed, this card is about discovering your own self-empowerment and the power of your thoughts.

Quote :

“A belief is only a thought I keep thinking.”

~ Abraham Hicks

Nine of Swords



Upright Meaning :

When the Nine of Swords appears it indicates anxiety and being mentally tormented with constant worry.

It indicates a sense of powerlessness where your troubles keep your mind busy at night and you have trouble finding sleep.

Your mental worry may have been the product of a painful decision, or you may feel victim of painful circumstances, yet constant worry cannot serve you if you want to bring out more understanding to your current situation.

It advises you to seek help or counseling and not give in to suffering in secret.

Keywords : Mental torment, distress, insomnia, despair, worry, anxiety, depression, powerless.

The Nine of Swords is represented with Anne Hathaway in her role as Maggie in the movie, "Love and Other Drugs."

In the movie, Maggie suffered the early onset of Parkinson's disease. She was in love with Jamie, who was supportive of her illness, but she felt he would only fully love her if there were a hope for a cure, so she decided to break up with him.

In the card, she is seen crying, haunted by her decision to break up with Jamie. She lays by her bedside in deep torment with her hands covering her face. Her red night-gown represents her deep passion and open wound.

Stars are filling the space of her bedroom to remind that the pain she feels is not who she is.

Reverse meaning :

Reversed, the Eight of Swords points to intense worry, depression even.

You may be putting on a brave face during the day or in front of others, but you are more plagued by your inner worries when alone due to the discrepancy or different masks you wear.

It can also indicate when you have finally taken the steps to share your inner worries and seek help and it has lifted a huge burden from you.

Quote :

"Thoughts are tyrants that return again and again to torment us."

~ Emily Brontë, *Wuthering Heights*

Ten of Swords

Keywords : Rock bottom, dark night of the soul, dawn after dark, defeat, betrayal, end.

The Ten of Swords is represented with actor Johnny Depp who plays character William Blake in the movie, "Dead Man."

In this scene, he has been mortally wounded with a bullet shot next to his heart and is laying on the ground.

A Native American Indian called Nobody finds him and tries to dislodge the bullet but can't because it would cause him to bleed to death. He is then stuck with a bullet and is still alive but like a "dead man " walking.

A dead fawn that has been accidentally shot is laying next to him and is a symbol of being an innocent victim and an object of sacrifice.

A beautiful sunrise can be seen with a curvy path that leads to it. It is a symbol of the dawn emerging after the darkest hour.



Upright meaning :

This card indicates hitting rock bottom. It indicates a sudden and unexpected pain, like feeling betrayed or backstabbed. The pain is even more sharp as it was not foreseen and came as a total surprise. Like a sudden breakup, or a firing at a job without notice.

You may feel like the victim of sudden events, and suffer a great amount of self-pity.

With nowhere to go, nowhere to turn to, it indicates that the only choice is total surrender to this moment, and learning more about acceptance.

It is also a reminder that there is light at the end of the tunnel.

Reverse meaning :

Reversed, the Ten of Swords means a new mindset, a new beginning, and an opportunity to start things afresh.

You may have realized that things cannot continue the way they have, and have taken on a proactive mindset to change your condition. It can also mean that you have been on the path to change or recovery from a past trauma or difficult situation but still have lingering doubt about relapse.

It encourages you to keep carving your path to a brighter and more positive outlook about your life.

Quote : "When this ultimate crisis comes... when there is no way out - that is the very moment when we explode from within and the totally other emerges: the sudden surfacing of a strength, a security of unknown origin, welling up from beyond reason, rational expectation, and hope." ~ Émile Durkheim

Ten of Swords

Second Print edition



Keywords : Rock bottom, dark night of the soul, dawn after dark, defeat, betrayal, end.

The Ten of Swords is represented with Jon Snow from the television series Games of Thrones.

Jon Snow is the bastard son of Eddard Stark, who was the head of the kingdom of Winterfell. He was raised with his “true-born” half siblings and adopted their northern values.

Being a bastard, he always had an inferiority complex towards his siblings and decided in adulthood to join “ the Night’s Watch “, a group that protected up north a wall that prevented enemies from crossing into the land.

In this group and had the opportunity to prove his own worth and climb the ladder of ranks without care for his former identity as a bastard son among true-born.

With much effort and adventures, he finally was elected Lord Commander of the Night’s watch.

It came with a heavy price, as there was much politics involved, and power struggle against other leaders that yearned for the position; Jon Snow got betrayed by his peers and left for dead in the snow.

Jon Snow was a very popular character in the show, for everyone was rooting for him as an underdog that climbed the ladder. His death came as surprise to all, and created much disbelief in him being actually dead. There was a glint in his eyes in the last shot of the episode that maybe suggested he was still alive.

The Ten of Swords represents hitting rock bottom and the despair that ensues, but it also indicates that at the end of the tunnel there is also light. The glint in the eye of Jon Snow in that last shot may represent that last hope, or renewal.

Upright meaning :

This card indicates hitting rock bottom. It indicates a sudden and unexpected pain, like feeling betrayed or backstabbed. The pain is even more sharp as it was not foreseen and came as a total surprise. Like a sudden breakup, or a firing at a job without notice.

You may feel like the victim of sudden events, and suffer a great amount of self-pity.

With nowhere to go, nowhere to turn to, it indicates that the only choice is total surrender to this moment, and learning more about acceptance.

It is also a reminder that there is light at the end of the tunnel.

Reverse meaning :

Reversed, the Ten of Swords means a new mindset, a new beginning, and an opportunity to start things afresh.

You may have realized that things cannot continue the way they have, and have taken on a proactive mindset to change your condition. It can also mean that you have been on the path to change or recovery from a past trauma or difficult situation but still have lingering doubt about relapse.

It encourages you to keep carving your path to a brighter and more positive outlook about your life.

Quote : “When this ultimate crisis comes... when there is no way out - that is the very moment when we explode from within and the totally other emerges: the sudden surfacing of a strength, a security of unknown origin, welling up from beyond reason, rational expectation, and hope.” ~ Émile Durkheim



Page of Swords

Keywords : Curious, alert, on guard, learning, talkative, restless, apprenticeship.

The Page of Swords is represented by actor Ron Weasley from Harry Potter.

He is Harry Potter's best friend but they had a short falling out at one point. They had to chase after a magical object called a Horcrux, but Ron felt they weren't getting anywhere. He also felt jealous of Harry, thinking Harry liked Hermione, who Ron has a crush on.

Here we see him stand with his magical wand, alert, on his guard, and with a defiant stance, ready to counterattack the slightest opposition.

Upright meaning :

As with all court cards the Page of Swords can represent a person you know or some aspect of yourself you may call upon.

The Page of Swords is a youthful and cautious person. He is curious, alert, and seeks justice.

He is clever, frank, and straightforward, when he communicates. He can be very opinionated and can be quick to judge a person or a situation without seeing the full picture completely. He is smart but a bit edgy, and shows a restless mental energy.

He has a sharp tongue and has ease expressing himself with words to make his point, but he can also be hurtful and express words he regrets later.

In a reading, it indicates the need to express and articulate one's opinion with consideration of other's feelings. It represents an opportunity for growth and learning.

This card can also relate to new ideas, sharing news or learning new skills.

Reverse meaning :

Reversed, the Page of Swords represents having trouble expressing what you wish to say. Your mind may be too nervous, excited or agitated, and leads you to muddle your speech or the message you wish to deliver.

It points to a sense of frustration with communication. There may be a misunderstanding, or projections that led to hasty conclusions about a person or a situation.

It encourages you to check your facts twice before you express yourself and to calmly articulate your thought.

You may find trouble standing up for what you believe in and may be quick to take a defensive stance due to lack of experience. It can also indicate speaking behind people's backs and gossip.

It encourages you to develop a more humble attitude and to express what you know and speak from experience rather than from theory, a book, or repeating someone else's opinion in order to impress others.

Quote :

“Opportunities present themselves every day - to everyone. You just have to be alert and ready to act.”

~ Marc Ostrofsky



KNIGHT OF SWORDS

Knight of Swords

Keywords : Haste, on a mission, action, impatient, self-righteous, opiniated, fast travel.

The Knight of Swords is represented by actor Matt Damon who plays the character Jason Bourne from the movie, “Bourne Identity.”

He is running against the clock, in search of his real identity after suffering memory loss. He is being chased by secret agents, amid a conspiracy that took place within the CIA, which he was connected to.

He represents fast movement forward, with a clear mission to remember who he is. He wants to regain full consciousness, to awake from his slumber and haze. His life is on the line, he doesn't know where he is going, but he is going.

Upright meaning :

As with all court cards the Knight of Swords can represent a person you know or some aspect of yourself you may call upon.

The Knight of Swords is a determined, resistant, and headstrong person. He is very sharp and makes for a great debater. He is very opinionated and thinks in a very logical, rational way with little place for sentiments to get in the way of his purpose. He is very direct, and doesn't “beat around the bush” when expressing his views on a subject.

He is organized, goal oriented, and systematic in his process to “get things done“. He is not afraid of routine, but it can sometimes make him lose sight of bigger goals and may miss opportunities due to his being too rigid .

He can be stubborn in doing things his way and needs to be careful about not closing himself off from other people's valuable input and often needed creative mindset.

He is ambitious, likes to do things fast, and with quick results, and shows little patience. It warns to be weary of being too arrogant, bossy, or wanting to do everything on your own, as it will lead you to only feel more isolated.

It encourages you to be more of a team player and use your strength at communication and leadership in a positive and inclusive manner.

The Knight of Swords can also represent a new venture, taking on a new project or business, or a new commitment.

Reverse meaning :

Reversed the Knight of Swords advises you to slow down and think before you speak.

You may have regret about words spoken that were too harsh or hurried to conclusions that proved not to be true. It advises you to take more time before you rush to action or judgement and learn from your mistakes.

Quote :

“While you'll feel compelled to charge forward it's often a gentle step back that will reveal to you where you and what you truly seek.”

~ Rasheed Ogunlaru



QUEEN OF SWORDS

Queen of Swords

Keywords : Independent, goal, clarity, quick thinker, organised, hardened, disciplined, fair

The Queen of Swords is represented by Daenerys Targaryen from the show, "Game of Thrones."

Daenerys is the Queen of Dragons. Not only does she have powerful dragons, she also leads an army of ruthless warriors that were once slaves. But Daenerys freed them from their masters and now they have pledged alliance to her.

She wasn't always this powerful, she once was very timid and barely spoke. All she did was obey orders from her tyrannic brother. She was forced to marry a powerful "barbarian-like" King, named Drogo. Daenerys opposed him at first, but then, over time, she became fond of him eventually falling in love with him while embracing and learning his culture.

Drogo passed away due to an infected wound from a combat duel. It is then that she embraced her destiny as Queen.

Upright meaning :

As with all court cards the Queen of Swords can represent a person you know or some aspect of yourself you may call upon.

The Queen of Swords is a very powerful, strong, clear, and articulate woman.

She is mature, wise, and possesses very strong moral values. Coupled with her strong analytical skills, she is often the arbiter of litigious situations. Her words can be cutting, but always to the point.

She is disciplined and a quick thinker and her focus and determination often help her to be suc-

cessful with whatever she sets her sight on.

She has learned from past mistakes and painful experiences, such as loss, and was able to come out the other side as someone wiser and stronger.

Very independent, she likes to spend time alone to restore herself.

This card indicates that you need to favor thinking with your head rather than the heart. Use your ability to analyze a situation clearly. Think through a situation instead of acting impulsively, driven by emotions.

It can also indicate being too hard on yourself and being your own worse self-critic or being emotionally too closed-off. It advises you to loosen up a bit if you want to manifest your true desires.

Reverse meaning :

Reversed, the Queen of Sword can be a cold, closed, "bitchy," and haughty person.

It indicates not being in tune with your emotional needs and being unbalanced. You may be overly possessive or jealous and either not expressing those feelings or overreacting without getting clear about the true situation.

It advises you to recenter and find your usual clarity of mind.

Quote : "Clarity and focus doesn't always come from God or inspirational quotes. Usually, it takes your mother to slap the reality back into you."~ Shannon L. Alder



KING OF SWORDS

King of Swords

Keywords : Truth, intellect, clarity, purpose, focus, mission, masculine, power, critical, fearless, discipline, edge, intentional.

The King of Swords is represented by Daniel Craig in his role as James Bond.

He is sitting firmly on his throne, full of presence and confidence. He is wearing his trademark black tuxedo, sprinkled with stars. He's just finished a job and he is now contemplating with his eyes set far on the horizon, the result of his work and his next mission.

Whatever that mission will be, it does not matter, all he knows is that he will put one hundred percent of his focus on it; his full consciousness and commitment. He never does things half-way.

A bright star shines right above his heart. A bullet may have come and gone through it, but now a star has replaced the old scar.

Upright meaning :

As with all court cards the King of Swords can represent a person you know or some aspect of yourself you may call upon.

The King of Swords is very powerful, strong, and present.

He is mature, intelligent, clear, and fearless.

He values Truth above all things, and dislikes dishonesty and lies. He has a very sharp intellect and is very wise, for those attributes he is often sought out to be the judge of litigious situations.

He is very disciplined and focused, and he always has a project, a mission, he is working on that he puts his full attention to. He is never afraid to take risks when it involves his passion.

He loves to be stimulated intellectually and loves taking on new challenges.

In a reading it indicates the need to use your sharp intellect and clarity of mind to be able to cut through difficult or challenging situations. It advises you to set aside sentimentality for discernment.

It can also indicate the need to call upon assistance from a person that has those qualities of discernment and expertise.

His wisdom comes from experience where old wounds have become shining stars.

Reverse meaning :

Reversed, the King of Sword can be abusive, controlling, and a tyrant. It indicates abusing a position of power in order to control a situation.

It advises you to check your facts twice before judging a person or situation. Be mindful, that the punishment you've inflicted may not fit the crime that has been committed.

It can also indicate a lack of direction or not being decisive enough.

Quote :

"If you're absolutely fearless, would you be earning a living in exactly the same way as you are now?"

~ David Deida



Ace of Pentacles

Keywords : Opportunity, gift, money, seed, resources, manifestation, wellness.

The Ace of Pentacles is represented by the Golden Egg from, "Harry Potter : Goblet of Fire."

The golden egg was a magical device the size of a dragon egg. It was the First task in the Triwizard Tournament and was placed among the eggs of female dragons where the champions had to retrieve it. Inside the egg contained a clue to deliver their loved ones who were imprisoned.

With the capture of the golden egg, Harry and Ron shared a new understanding and reconciled their past differences.

Upright meaning :

When the Ace of Pentacles appears in a reading it means there is a potential, an opportunity that needs to be grasped in order to be manifested in your life.

The Ace of Pentacles represents an opportunity for growth, be it material, spiritual, or emotional.

It may be the chance to start a new job, a new project, improve your health, meet new people, improve your home and your relationships, or make new and better investments.

It indicates opportunity for prosperity but also the need to remain grounded by spending time in nature and keeping a healthy lifestyle.

Reverse meaning :

Reversed, the Ace of Pentacles indicates clinging to material resources, and a fear of losing what you have.

It indicates that you are either already involved in a bad investment or have fear about investment due to the possibility of losing resources; even though you have all the means necessary.

It also indicates being too focused on the material aspects of life and neglecting spirituality and health.

It advises you to loosen that grip on your fear of lacking and loss and nurture different aspects of your life.

Quote : "I take the opportunity each day offers."
~ Andy Goldsworthy

Two of Pentacles



Keywords : Multitasking, balance, juggling, flexibility, priorities, equilibrium, flow.

The Two of Pentacles is represented with actor Keanu Reeves, as Neo, in the movie, “The Matrix.”

In this scene in the card, Neo has just started to learn self-control and discover the power of his mind and his unlimited potential. He just learned new Kung-Fu abilities and declared: “I know kung fu.”

Here we see him juggling two gold Pentacle coins that lays within a glowing blue infinity sign right above his head. They represent his mastery and his infinite ability to juggle all situations.

Behind him is the vast and calm ocean. A boat on the horizon is cruising and going with the flow of life

Upright meaning :

The Two of Pentacles represents multitasking, managing priorities, and finding equilibrium

It indicates having a lot on your plate but finding your own groove that enables you to juggle with all your different tasks. It encourages you to go with the flow and to continue in your efforts despite the occasional bumps on the road that forge your experience.

It indicates a need to set your priorities amidst all your busy activity and to remain mindful. You know the way to mastery in order to achieve balance in your life, you only need to keep doing

It can also indicate traveling for business.

Reverse meaning :

Reversed, this card indicates lacks of productivity, working inefficiently or procrastinating.

You may be blocked by fear or are overwhelmed by the perceived enormity of the task at hand.

Alternately, you may be doing so much at once without accomplishing anything well.

It advises you to start with small, reachable goals that will bring you confidence in taking your next step.

Quote :

“ **Abundance is simply the Ability to do what you need to do when you need to do it** “

~ **Bashar**

Three of Pentacles



Keywords : Teamwork, synchronicity, assistance, contribution, apprenticeship, coordinating.

The Three of Pentacles is represented by three characters from the movie, “Lord of the Rings.” The King of Dwarves, Thorin Oakenshield, the wizard, Gandalf, and the King of the Elves, Elrond.

They are seen talking after having examined a map. Elrond explains that there are special letters, written in silver pen on the map, which can only be read under the moonlight and during the same moon phase that the letters were written in.

Luckily, they are meeting at that same time and phase of the moon and this lucky coincidence makes the reading of the map possible.

The Three of Pentacles symbolizes that when all have their intents aligned, synchronizations and great collaboration often go hand in hand.

Upright meaning :

When the Three of Pentacles appears in a reading it indicates a project is about to take form and manifest.

It indicates putting one’s skills to the table and cooperating with others in order to advance in a shared task or job. You are putting your expertise to work and are being compensated for it.

You are seeing the fruit of your intent manifest concretely in the world with synchronizations that advance your cause. It might be that someone you needed for a particular project just gave you a random call, or you’ve been asked for assistance just when you were available and willing to do so

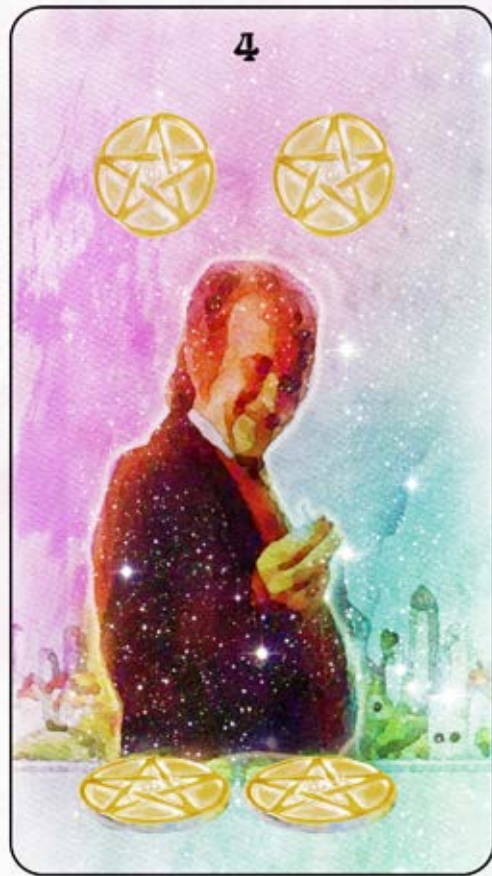
Reverse meaning :

Reversed, this card indicates lack of cooperation and feeling under-appreciated for the work you do. It may be that you’re part of a team where you carry the workload but you are not given due credit, or you are subject to constant criticism that is not constructive.

It can also indicate when you are being asked to do something out of your scope, something unethical, unpractical or unsafe, causing you inner-conflict. It points to stretching beyond your means in terms of skills, knowledge or finance

Quote : “When you are in alignment with the people around you, you are much more likely to travel in the same direction and avoid hidden agendas.” ~ Mitch Thrower

Four of Pentacles



Keywords : Possession, security, greed, control, saving.

The Four of Pentacles is represented with Bilbo Baggins from, “The Hobbit.”

He is holding his beloved possession, the One Ring of Power that rules all other rings given to men, elves, and dwarves; on it is inscribed :

“ One Ring to rule them all, One Ring to find them, One Ring to bring them all, And in the darkness bind them.”

It is the ultimate symbol of greed and power that corrupts the soul of men. Of all the races that were offered the Rings of Power, the race of men were the weakest, and were transformed into eerie ghosts, called Nazgul. The ring destroyed the soul of Gollum, but Bilbo, being of gentle nature could still resist its power.

Upright meaning :

The Four of Pentacles in a reading means that matters of security and control are important matters to you.

You may have reached a certain level of comfort whether material, spiritual, or emotional and you are not willing to take a chance on anything that is different or new and feel the need to protect what you have.

It may indicate a certain level of possessiveness and greed over material resources and an unwillingness to do things differently.

It indicates a need to move past your comfort zone if you want to continue to expand and grow.

Reverse meaning :

Reversed, this card indicates being either wasteful with resources or holding too tightly.

You may feel pressured to spend more than you are comfortable with, have a tendency to live above your means, or you may have a fear of poverty that leads you to cling too tightly to your possessions.

It can also indicate being overly focused with goals that are material and causing you to neglect your relationship, home or family life.

Quote : “There is more in you of good than you know, child of the kindly West. Some courage and some wisdom, blended in measure. If more of us valued food and cheer and song above hoarded gold, it would be a merrier world.”

~ J.R.R. Tolkien, *The Hobbit*

Five of Pentacles



Keywords : Poverty, insecurity, ascetism, misery loves company, isolation, loss, sense of lack.

The Five of Pentacles is depicted with Charlie Chaplin and Jackie Coogan from, “The Kid.”

Both are seen sitting at the doorstep of their small apartment. The Tramp, Charlie Chaplin, is cross-armed and pensive. It is cold outside, and he needs to think about his next meal for both he and his adopted kid, who unlike him, sits calm and poised and not worried about his next meal.

The five gold pentacles coins are laid in front of a church stained-glass window and symbolizes the warmth and spiritual comfort to all those who are in need.

Upright meaning :

The Five of Pentacles indicates a sense of poverty and lack. It may be that your sense of security is threatened and you constantly worry about whether your needs will be met or not.

It indicates cultivating a sense of abundance through valuing the things you have, in order to manifest more of it in your life, rather than constantly focusing on the things you lack and feeling negative due to it.

It encourages you to cultivate the poised and content posture and attitude of the Kid rather than the closed and resistant one of the Tramp.

It can also indicate a voluntary decision to forego material comfort in order to pursue a spiritual or creative ideal.

Reverse meaning :

Reversed, the Five of Pentacles indicates recovery from a financial loss or unemployment.

In one hand it can indicate that a time of lacking may be ending, where you may receive that long-awaited call for a job or a check finally arrived.

On the other hand it can signify still holding on to a victim mentality in areas of material security where you are blaming others for your situation. It encourages you to take matters into your own hands.

Quote : “You might be poor, your shoes might be broken, but your mind is a palace.”

~ Frank McCourt, Angela’s Ashes

Five of Pentacles



Keywords : Poverty, insecurity, ascetism, misery loves company, isolation, loss, sense of lack.

The Five of Pentacles is depicted with Hugh Jackman as Jean Valjean carrying Cosette in the classic movie, “Les Misérables.”

Jean Valjean an ex-prisoner, has been hunted ruthlessly for a decade by the heartless policeman Javert after breaking parole. A good man, Jean Valjean agreed to look after factory worker Fantine’s daughter Cosette. He is seen here carrying Cosette under the snow trying to overcome their woes.

The five gold pentacles coins are laid in front of a church stained-glass window and symbolizes the warmth and spiritual comfort to all those who are in need.

Upright meaning :

The Five of Pentacles indicates a sense of poverty and lack. It may be that your sense of security is threatened and you constantly worry about whether your needs will be met or not.

It indicates cultivating a sense of abundance through valuing the things you have, in order to manifest more of it in your life, rather than constantly focusing on the things you lack and feeling negative due to it.

It encourages you to cultivate the poised and content posture and attitude of the Kid rather than the closed and resistant one of the Tramp.

It can also indicate a voluntary decision to forego material comfort in order to pursue a spiritual or creative ideal.

Reverse meaning :

Reversed, the Five of Pentacles indicates recovery from a financial loss or unemployment.

In one hand it can indicate that a time of lacking may be ending, where you may receive that long-awaited call for a job or a check finally arrived.

On the other hand it can signify still holding on to a victim mentality in areas of material security where you are blaming others for your situation. It encourages you to take matters into your own hands.

Quote : “To die for lack of love is horrible. The asphyxia of the soul.”

~ Victor Hugo, Les Misérables



Six of Pentacles

Keywords : Charity, exchange, giving, loan, gratitude, generosity, abundance, prosperity.

The Six of Pentacles is depicted by Sara Crewe from, "A Little Princess."

Sarah was raised in exotic India by her wealthy and loving father. She was sent to a strict boarding school when he went to war. He was believed dead and all his fortune was confiscated. She was then kept there as a maid by Miss Minchin, the stern and abusive headmistress.

Sarah was generous, kind and pure of heart, and had a keen ability to drive the headmistress mad with her ability to cope with whatever chores or verbal abuse she threw at her.

When the headmistress confronted Sara with the reality of her life stating, "Don't tell me you still fancy yourself a princess! Good God child, look around you...look in the mirror!" Sara replied with these words, "I am a princess...all girls are... even if they live in a tiny old attic...even if they dress in rags...even if they aren't pretty or smart or young...they are still princesses, all of us".

Upright meaning :

The Six of Pentacles is a card of abundance and sharing your prosperity with others in need.

It indicates a sense of well-being regardless of the circumstances. You know how to make the best out of any situation and are ready to share your gift of manifestation and creating your preferred reality for others.

Like Sara, you are a prince or princess wherever you go. You are showered by a rain of stars, and though you may look like an innocent child, you stand ten feet tall in appreciation and gratitude for all that life has given you.

Finally, it indicates that you are ready to give back, and share all your gifts of prosperity to those who feel lack and empty-handed.

Reverse meaning :

Reversed, the Six of Pentacles indicates a debt or having trouble with charity.

It may be that you do not have the resources needed for your current situation or your desire and expect that someone else hands it out to you.

It indicates a lack of self-reliance and an unbalance between give and take.

Quote :

" Circumstances don't matter, state of being matters ! "

~ Bashar

Seven of Pentacles

Keywords : Assessment, perseverance, patience, taking stock, profit, learning from experience.

The Seven of Pentacles is depicted by Yoda and Luke Skywalker from, “Star Wars: The Empire Strikes Back.”

Luke has just finished a hard training session and learned more about manipulating the “Force .“

They are sitting by the bank of a swampy lake and are assessing Luke’s progress. As they speak, Luke sees his spaceship sink in the swamp and does not know how he will retrieve it. Yoda urges him to use the Force. He tries but fails and decides it is simply impossible. Luke tells Yoda, “It’s not the same as levitating rocks!” Yoda then closes his eyes and shows him how it is done by levitating Luke’s spaceship above the surface of the swampy lake.

Upright meaning :

The Seven of Pentacles indicates a pause in order to take stock and assess your situation. It could be a time to reflect and evaluate your skills. A time to

Reverse meaning :

Reversed, the Seven of Pentacles indicates discouragement or making the same mistakes.

It indicates being ready to give up something one has put effort in because of a lack of results.

Though there is valid disappointment, it is also a reminder that not all is ever lost. All your efforts also carry valuable lessons that you will carry with success in your next venture.

Quote :

“The man who moves a mountain begins by carrying away small stones.”

~ Confucius



stand back and have a fresh outlook at what has been done.

You may have been involved in a certain pattern or way of doing things, whether it is at work, in your business, or your relationships. Now is the time to assess where you are.

How are things working out for you? Where are you going? What could you improve?

It indicates that now is a good time to take stock of your situation especially if you are not currently satisfied with how things are. You may need to apply some slight adjustments or call upon some assistance to help you achieve mastery.

It can also indicate being evaluated and the need to welcome constructive criticism. It advises you to cultivate patience if you want to manifest your goal.

Eight of Pentacles

Keywords : Hard work, fine-tuning, dedication, practice, craftsmanship, apprenticeship.

The Eight of Pentacles is depicted with two Elves.

They are rebuilding the once broken magical sword Elendil that slayed Sauron in the past.

“The sword of Elendil was forged anew by Elvish smiths, and on its blade was traced a device of seven stars set between the crescent Moon and the rayed Sun, and about them was written many runes; for Aragorn, son of Arathorn was going to war upon the marches of Mordor. Very bright was that sword when it was made whole again; the light of the sun shone redly in it, and the light of the moon shone cold, and its edge was hard and keen. And Aragorn gave it a new name and called it Andúril, Flame of the West.”

—The Fellowship of the Ring



Upright meaning :

The Eight of Pentacles indicates dedication and focus in a satisfying work.

It may be that you are nearing completion in a project or that the new skills you have learned and practiced are finally show satisfying results.

In a reading, this card calls you to continue in your effort and persevere, for all this fine tuning of your craft will lend to a satisfying and fulfilling results.

You are nearing mastery and need to keep your focus steady.

Reverse meaning :

Reversed, the Eight of Pentacles indicates a lack of recognition for your effort or being over-worked.

It indicates putting a lot of efforts in vain. You may have all the talent or skills but your environment may not be sensitive enough or adapted to welcome or recognize your input. It leads to a sense a frustration where you may consider looking to a place that is more of a match with what you have to offer.

It can also indicate over-working, being burnt-out, and the need for self-care.

Quote :

“Without craftsmanship, inspiration is a mere reed shaken in the wind.”

~ Johannes Brahms

Nine of Pentacles

Keywords : Independence, fruits of labour, free spirit, gratitude, self-reliance, maturity, growth.

The Nine of Pentacles is represented by the character, Aeon Flux, played by Charlize Theron, in the movie, "Aeon Flux."

Aeon Flux was a skillful warrior who lived in a futuristic, walled-in city called Bregna. After its inhabitants were plagued by strange nightmares and disappearances she started to question the origin of the city's population. She found out they were all clones due to infertility problems after a virus occurred more than four hundred years ago.

She manages to find out the entire population is being kept under tight control by the elite, to keep the power, but that there was no longer an infertility problem nor a need for cloning. She discovers at the end of the movie that there is a lush vegetated world beyond the city's walls, instead of the no-man's land they were all told there was.

Upright meaning :

This card represents self-reliance and the need to question your biggest assumptions in order to challenge the status quo and things that seems so normal because

Reverse meaning :

Reversed, the Nine of Pentacles indicates issues with self-esteem in relation to material security.

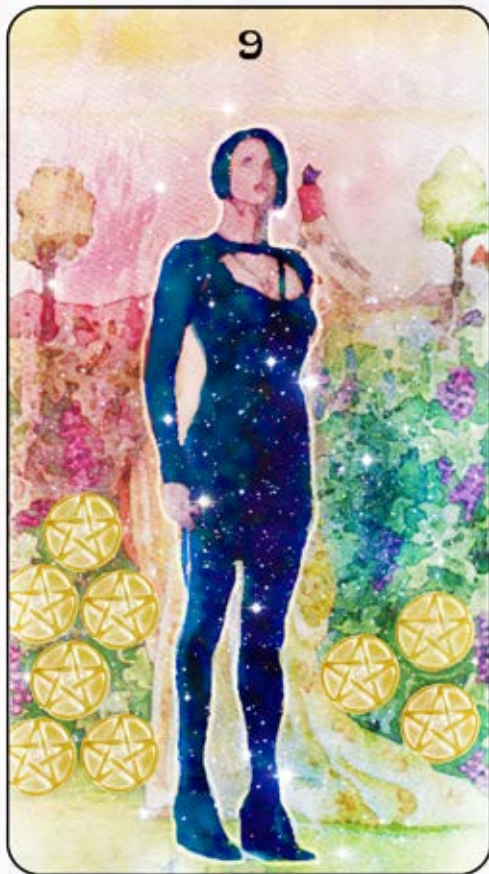
It may be that you have spent money unwisely and beyond your means in order to make you feel better, but now you feel regret. Or, you may have been expecting others to take care of you and you're not feeling good about yourself.

It encourages you to feel good about yourself while remaining reasonable in your spending or reliance on others.

Quote :

"I am no bird; and no net ensnares me: I am a free human being with an independent will."

~ Charlotte Brontë, Jane Eyre



everyone around you is accustomed to the same beliefs.

The Nine of Pentacles indicates independence and self-sufficiency. You are enough and can stand alone and on your own. You can easily provide yourself with all that you need and require in order to live comfortably in this universe.

You do not feel the need to depend on anyone nor subject yourself to anyone's control. Nor do you adopt the fearful attitude the media news outlets subject everyone to. You have your own independent creative vision and you pursue it.

While the Nine of Pentacles represents well-earned independence, it can also indicate you are giving off the impression of not needing anyone else and can cause you to be isolated.



Nine of Pentacles

Keywords : Independence, fruits of labour, free spirit, gratitude, self-reliance, maturity, growth.

The Nine of Pentacles is represented by Linda Carter as Wonder Woman.

Wonder Woman was a warrior princess of the Amazons. She was born out of clay by her mother Hyppolita and was given superpowers from mythological deities. Her upbringing as an Amazonian, gave her incredible skills as a huntress and fighter. Her constant fight for justice, love, gender equality, made her a feminist icon. She represents strength of body, mind and spirit all in perfect equilibrium. She is a symbol of fierce independence and empowerment.

Drawing this card means that you are ready to embrace your divine empowered self, be free of past restrictions and ready to express your free and independent nature.

Upright meaning :

This card represents self-reliance and the need to question your biggest assumptions in order to challenge the status quo and things that seem so normal because everyone around you is accustomed to the same beliefs.

Reverse meaning :

Reversed, the Nine of Pentacles indicates issues with self-esteem in relation to material security.

It may be that you have spent money unwisely and beyond your means in order to make you feel better, but now you feel regret. Or, you may have been expecting others to take care of you and you're not feeling good about yourself.

It encourages you to feel good about yourself while remaining reasonable in your spending or reliance on others.

Quote :

"I love to see a young girl go out and grab the world by the lapels. Life's a bitch. You've got to go out and kick ass."

~ Maya Angelou

The Nine of Pentacles indicates independence and self-sufficiency. You are enough and can stand alone and on your own. You can easily provide yourself with all that you need and require in order to live comfortably in this universe.

You do not feel the need to depend on anyone nor subject yourself to anyone's control. Nor do you adopt the fearful attitude the media news outlets subject everyone to. You have your own independent creative vision and you pursue it.

While the Nine of Pentacles represents well-earned independence, it can also indicate you are giving off the impression of not needing anyone else and can cause you to be isolated.

Ten of Pentacles

Keywords : Tradition, cycles, permanence, family, foundation, inheritance, ancestors, evolution.

The Ten of Pentacles is represented with the main characters of the movie, "Tree of Life."

The film begins with a quotation from the Book of Job: "Where were you when I laid the foundations of the Earth?... When the morning stars sang together, and all the sons of God shouted for joy?"

We can see actor Sean Penn as Jack O'Brien reminiscing about his childhood and his family who are played by Jessica Chastain, as Miss O'Brien, and Brad Pitt as Mr O'Brien.

A spiral in the bottom left corner represents the cycles and the origin of life. The spiral extends like riverbeds or a stream of energy that two white dogs seem to playfully tinker with. It is a symbol for evolution



Upright meaning :

The Ten of Pentacles is a card of tradition, abundance, comfort and security, but also evolution.

It indicates that tradition is an important aspect and that it is either being passed down to you in the form of values, principles or materials, or that you are passing them on to a new generation that will contribute and add their own experience while keeping the foundation intact.

In the sharing of your vision, there is a sense of fulfillment and accomplishment despite all the obstacles you had to encounter.

This card indicates that family and their well being are important to you and your inclination is towards wanting to provide them with security and comfort

Reverse meaning :

Reversed, the Ten of Pentacles indicates difficulty with legacy and setting a good foundation financially.

It could be that you have some financial setbacks or are having trouble settling an estate. It indicates not being rewarded despite lots of efforts or suffering setbacks due to a lack of foundation; you may lack a safety "net."

Quote :

"The best words of wisdom that a parent can say to their child is "I Am proud of you"."

~ Unarine Ramaru



PAGE OF PENTACLES

Page of Pentacles

Keywords : Student, practical, new opportunity, manifesting, careful.

The King of Pentacles is represented by Harry Potter.

He is seen as a young apprentice wizard holding a crystal ball with a pentacle coin inside, which represents the life of magic that awaits him. He has everything to learn in Hogwarts School of Witchcraft and Wizardry.

Whereas he used to be mistreated by his relatives, the Dudleys, who adopted him when his parents passed away and forced him to live in a cupboard under the stairs, at Hogwart he was a shining star. He was recognized everywhere he went and was famous for surviving his past confrontation against evil wizard Lord Voldemort when he was only a baby.

Upright meaning :

As with all court cards the Page of Pentacles can represent a person you know or some aspect of yourself you may call upon.

The Page of Pentacles is youthful, reliable, and conscientious. He works hard to gain new skills and knowledge. A good listener, he gives sound and practical advices and makes for a good and loyal friend.

He is passionate about putting his new found acquired knowledge into practical application.

The Page of Pentacles indicates finding a direction that will bring you prosperity and material abundance and the need to stay focused on your effort in order to achieve that goal.

You are only beginning to learn and acquire new knowledge and it is important to remain steady and humble in your effort, as you are barely carving your new path.

Reverse meaning :

Reversed, the Page of Pentacles indicates a lack of focus, having a short attention span, not being productive, and being easily distracted.

It indicates being easily irritated with tasks that are repetitive but necessary for growth and not being open to criticism.

This card indicates a lack of maturity and some level of fear that prevents you from being productive. It may be that you have big dreams but do not take any steps in that direction and invent excuses in order not to move forward.

The Page of Pentacles reversed can also indicate trouble budgeting, not having money and also neglecting your well-being with not enough outdoor exercise nor a healthy diet.

Quote :

“It is a mistake to think that the practice of my art has become easy to me. I assure you, dear friend, no one has given so much care to the study of composition as I. There is scarcely a famous master in music whose works I have not frequently and diligently studied.”

~ Wolfgang Amadeus Mozart



KNIGHT OF PENTACLES

Knight of Pentacles

Keywords : Dependable, cautious, steady, slow, efficient, conservative, patient, cool.

The Knight of pentacles is represented by Keanu Reeves.

He is not portraying any particular role besides being himself. He is seen cruising on his bike, at very low speed, wearing shades and driving with one hand. A gold pentacle coin is floating by his head, following him steadily in a warm and sunny background.

Upright meaning :

As with all court cards the Knight of Pentacles can represent a person you know or some aspect of yourself you may call upon.

The Knight of Pentacles is a cautious, careful, dependable person. He is patient, pays attention to details, is very meticulous, and moves slowly but steadily towards his goal.

This card generally indicates a new commitment, or a new responsibility. It could be in a project, a new job or a relationship. It encourages you to embrace your new role with a caring and conservative attitude, to remain cool and calm and not shrug off the new tasks.

It can also indicate a need to follow through, to finish what you started, and not let things go with loose ends or remain unfinished.

It indicates having to act responsibly and keep your resolutions intact and your steadfastness about a situation.

It can also indicate someone dependable that you can count on and may need to call upon, or you playing that role to someone else

Reverse meaning :

Reversed, the Knight of Pentacles indicates being slow and getting stuck.

You may be overly concerned over details of your project to the detriment of moving forward to complete it.

It can also indicate being stuck because of a fear bogging you down or you may lack the particular skills or expertise required. It encourages you to speak up and seek assistance in order to move forward.

It may indicate an overall boredom or apathy, feeling uninspired with a routine, and may affect your body and health with being too sedentary. It encourages you to connect with your body again with exercise, nature, and a good diet in order to feel inspired again.

Quote :

“Slow and steady wins the race.”

~ Aesop



Queen of Pentacles

Keywords : Nurturing, healing, practical, calm, nature, ecological, supportive, security, health, homely, versatility, prosperity, fertility.

The Queen of Pentacles is represented by Angelina Jolie as Egyptian Queen Cleopatra.

She is wearing a magnificent one-shouldered red dress with golden overlays and jewelry that testify to her power, her radiance, and abundance. She is holding a golden pentacle coin over her belly that represents prosperity and fertility.

The background is very lush, with mountains and vegetation all around. A green ribbon crowning the top of her head symbolizes her restorative and healing power.

A rabbit is resting below her elbow and represents her calm, alert, and down-to-earth approach to life.

Behind her lays what seems to be a monument, a remnant of her throne, or a tombstone made of marble, it is the symbol of her legacy, what she left behind; her heritage

Upright meaning :

As with all court cards the Queen of Pentacles can represent a person you know or some aspect of yourself you may call upon.

The Queen of Pentacles is a down-to-earth, practical, successful woman. She is mature and gifted with creating a secured, comfortable situation for all those she loves.

She is very nurturing, caring and protective. Her presence is very soothing and healing. She has a deep connection with nature and cares for the environment.

She is not only practical but also versatile and adaptable to any situation where she can transfer her wisdom to any field.

In a reading, it encourages you to develop your versatility and use your ability to adapt to new situations. It could be a new job, a new training, or relationship. By keeping things down-to-earth and practical in relation to what you already know you will create harmony in your environment.

It also indicates how important it is to find a good balance between work commitments and family.

This card can indicate a time of fertility and prosperity.

Reverse meaning :

Reversed, the Queen of Pentacles can be a negative, self-deprecating woman. It indicates self-indulgence, unhealthy lifestyle, and an obsession with pursuing material wealth.

It encourages you to ground yourself more and examine the value and importance of the relationships you have in your life. How are they nourishing you and helping you expand? Do they help you become more open? Or do they only serve a role when there is a mutual benefit?

Quote : “I saw the angel in the marble and carved until I set him free” ~ Michaelangelo



KING OF PENTACLES

King of Pentacles

Keywords : Security, discipline, power, wealth, prosperity, control, loyal, business, ambition, success, management, originality.

The King of Pentacles is represented by Bruce Lee. He is sitting comfortably in a chair holding a magical pen that emits light in every direction. Or maybe it is a magic candle or wand?

Whatever our imagination conjures for this object to be, all that we know is that it is magical and of divine origin. A beacon of energy, it emits frequencies of abundance, power, security, and well-being in all directions. Its light reveals a lush scenery behind him, a realm filled with gods hidden behind a thin veil.

His left hand is poised and forming a circle that is resting gently in abstract blurry shapes that look like a mound filled with vegetation, a stream of water, and waterfalls. They represent abundance flowing.

On top of his left hand rests a golden coin of Pentacles, which is perfectly aligned with one of the rays that emits from his magical wand. It represents that his prosperity is not the product of mere chance, it is calculated and intentional.

Upright meaning :

As with all court cards the King of Pentacles can represent a person you know or some aspect of yourself you may call upon.

The King of Pentacles is a wealthy, intelligent, and resourceful person. He is very practical and makes for a great business man. Careful with money, he still loves to enjoy the comfort and luxuries of life.

He is patient, thoughtful, and considerate; his love for family makes him a great husband or father.

He is endowed with the gift of turning everything he touches into gold.

Yet, his prosperity is not only the product of discipline but of his originality and unique approach to problem solving. He creates abundance and prosperity by offering creative solutions to a situation.

He knows the value of effort and he may share generously what he has, but it has to have value or a purpose in his eyes; he did not get to where he is by throwing his wealth away!

He is organized and has great management skills and can be called upon if you need to improve in those areas.

Reverse meaning :

Reversed, the King of Pentacles indicates being a workaholic and putting too much emphasis on money and material concerns.

It indicates some level of greed, possessiveness, or envy. You may constantly be looking at the neighbor's plate in a restaurant after you have ordered your meal always comparing and discontent with whatever you have.

It can also indicate overspending on luxuries you cannot afford, living beyond your means, and acquired debt.

It encourages you to cultivate appreciation rather than accumulation.

Quote : “Absorb what is useful, Discard what is not, Add what is uniquely your own.” ~ Bruce Lee