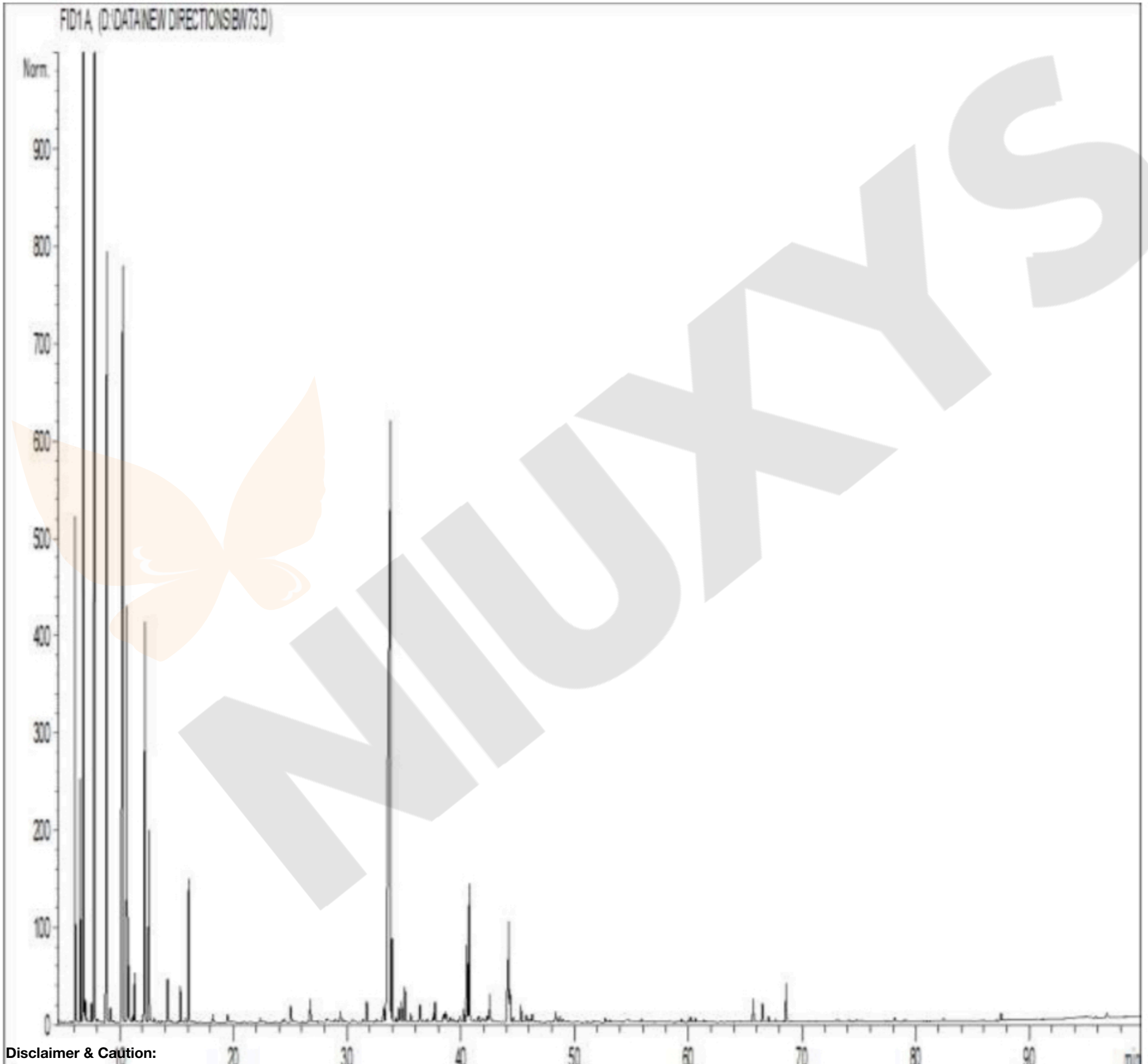


GCMS ANALYSIS

PRODUCT NAME: SPRUCE ESSENTIAL OIL (BLACK WILD) - 11137

DATE: September 8, 2020



**Disclaimer & Caution:**

Please refer to all relevant technical information specific to the product, prior to use. The information contained in this document is obtained from current and reliable sources, NIUXYSRCB Corp., provides the information contained herein, but makes no representation as to its comprehensiveness or accuracy. Individuals receiving this information must exercise their independent judgment in determining its appropriateness for a particular purpose. The user of the product is solely responsible for compliance with all laws and regulations applying to the use of the products, including intellectual property rights of third parties. As the ordinary or otherwise use(s) of this product is outside the control of NIUXYSRCB Corp., no representation or warranty, expressed or implied, is made as to the effect(s) of such use(s), (including damage or injury), or the results obtained. The liability of NIUXYSRCB Corp., is limited to the value of the goods and does not include any consequential loss. NIUXYSRCB Corp., shall not be liable for any errors or delays in the content, or for any actions taken in reliance thereon. NIUXYSRCB Corp., shall not be responsible for any damages resulting from use of or reliance upon this information. In the event of any dispute, the Customer hereby agrees that Jurisdiction is limited to the Philippines.

G C M S ANALYSIS (cont'd,)

PRODUCT NAME: SPRUCE ESSENTIAL OIL (BLACK WILD) - 11137

Peak	RT (min)	Compound name	%
1	4,60	<b>ACETONE</b>	<b>0,01</b>
2	6,10	SANTENE	2,62
3	6,54	TRICYCLEN	1,66
4	6,86	<b>alpha-PINENE</b>	<b>20,69</b>
5	6,88	alpha-THUYENE	0,16
6	6,98	COMPOUND Mw=122	0,14
7	7,09	TOLUENE	0,05
8	7,51	alpha-FENCHENE	0,15
9	7,78	<b>CAMPHE</b>	<b>14,78</b>
10	8,07	HEXANAL	0,04
11	8,86	<b>beta-PINENE</b>	<b>6,88</b>
12	9,19	SABINENE	0,10
13	9,25	PINADIENE	0,05
14	9,51	delta2-CARENE	0,01
15	10,27	<b>delta3-CARENE</b>	<b>9,01</b>
16	10,66	<b>beta-MYRCENE</b>	<b>3,35</b>
17	10,77	alpha-PHELLANDRENE	0,44
18	10,84	psi-LIMONENE	0,01
19	11,15	o-CYMENE	0,07
20	11,31	alpha-TERPINENE	0,39
21	12,21	<b>LIMONENE</b>	<b>3,76</b>
22	12,57	1,8-CINEOLE + beta-PHELLANDRENE	1,63
23	12,76	1,3,8-p-MENTHARIENE	0,03
24	13,03	COMPOUND Mw=152	0,04
25	13,37	FURAN, 2-PENTYL	0,02
26	13,69	Cis-beta-OCIMENE	0,02
27	14,21	gamma-TERPINENE	0,37
28	14,51	Trans-beta-OCIMENE	0,02
29	15,19	m-CYMENE	0,01
30	15,34	p-CYMENE	0,33

**Disclaimer & Caution:**

Please refer to all relevant technical information specific to the product, prior to use, The information contained in this document is obtained from current and reliable sources, NIUXYSRCB Corp., provides the information contained herein, but makes no representation as to its comprehensiveness or accuracy, Individuals receiving this information must exercise their independent judgment in determining its appropriateness for a particular purpose, The user of the product is solely responsible for compliance with all laws and regulations applying to the use of the products, including intellectual property rights of third parties, As the ordinary or otherwise use(s) of this product is outside the control of NIUXYSRCB Corp., no representation or warranty, expressed or implied, is made as to the effect(s) of such use(s), (including damage or injury), or the results obtained, The liability of NIUXYSRCB Corp., is limited to the value of the goods and does not include any consequential loss, NIUXYSRCB Corp., shall not be liable for any errors or delays in the content, or for any actions taken in reliance thereon, NIUXYSRCB Corp., shall not be responsible for any damages resulting from use of or reliance upon this information, In the event of any dispute, the Customer hereby agrees that Jurisdiction is limited to the Philippines.

GCMS ANALYSIS (cont'd,)

PRODUCT NAME: SPRUCE ESSENTIAL OIL (BLACK WILD) - 11137

Peak	RT (min)	Compound name	%
31	15,74	ISOTERPINOLENE	0,04
32	16,06	TERPINOLENE	1,24
33	18,21	PINOL	0,08
34	19,48	CAMPHOLENE ALDEHYDE ISOMER	0,10
35	19,85	1-HEXANOL	0,02
36	20,93	3-METHYL-3-BUTENYL,ISOVALERATE	0,01
37	21,50	3-HEXEN-1-OL	0,02
38	22,36	COMPOUND Mw=152	0,05
39	24,28	ALIPHATIC ESTER	0,02
40	24,44	DIMETHYLSTYRENE ISOMER	0,05
41	25,03	alpha,p-DIMETHYLSTYRENE	0,24
42	26,57	alpha-CUBEBENE	0,02
43	26,77	FENCHYL ACETATE	0,26
44	27,36	alpha-LONGIPINENE	0,01
45	27,66	CITRONELLAL	0,01
46	28,21	alpha-CAMPHOLENAL	0,11
47	28,95	alpha-COPAENE + LONGICYCLENE	0,04
48	29,41	CAMPHOR	0,14
49	29,69	alpha-PINOCAMPHONE	0,04
50	30,49	CAMPHOLENIC ALCOHOL	0,05
51	31,41	ISOPINOCAMPHONE	0,04
52	31,55	SESQUITERPENE	0,02
53	31,74	LINALOOL	0,22
54	32,52	Trans-p-MENTH-2-EN-1-OL	0,02
55	32,64	PINOCARVONE	0,05
56	33,22	LONGIFOLENE	0,22
57	33,83	<b>BORNYL ACETATE</b>	<b>18,57</b>
58	33,96	ISOBORNYL ACETATE	0,67
59	34,27	METHYL THYMOL ETHER	0,06
60	34,53	beta-ELEMENE	0,13

**Disclaimer & Caution:**

Please refer to all relevant technical information specific to the product, prior to use, The information contained in this document is obtained from current and reliable sources, NIUXYSRCB Corp., provides the information contained herein, but makes no representation as to its comprehensiveness or accuracy, Individuals receiving this information must exercise their independent judgment in determining its appropriateness for a particular purpose, The user of the product is solely responsible for compliance with all laws and regulations applying to the use of the products, including intellectual property rights of third parties, As the ordinary or otherwise use(s) of this product is outside the control of NIUXYSRCB Corp., no representation or warranty, expressed or implied, is made as to the effect(s) of such use(s), (including damage or injury), or the results obtained, The liability of NIUXYSRCB Corp., is limited to the value of the goods and does not include any consequential loss, NIUXYSRCB Corp., shall not be liable for any errors or delays in the content, or for any actions taken in reliance thereon, NIUXYSRCB Corp., shall not be responsible for any damages resulting from use of or reliance upon this information, In the event of any dispute, the Customer hereby agrees that Jurisdiction is limited to the Philippines.

GCMS ANALYSIS (cont'd,)

PRODUCT NAME: SPRUCE ESSENTIAL OIL (BLACK WILD) - 11137

Peak	RT (min)	Compound name	%
61	34,55	CAMPHENE HYDRATE	0,10
62	34,81	beta-CARYOPHYLLENE	0,26
63	35,08	TERPINENE-4-OL	0,41
64	35,60	TERPENIC ACETATE	0,10
65	36,40	MYRTENAL	0,06
66	36,41	Cis-PINOCARVYL ACETATE	0,19
67	36,71	TERPENIC ESTER	0,04
68	37,05	CADINA-3,5-DIENE	0,04
69	37,34	GERMACRENE A	0,03
70	37,60	Trans-PINOCARVYL ACETATE	0,11
71	37,75	VERBENYL ACETATE	0,26
72	38,47	ZONARENE	0,12
73	38,64	ISOBORNEOL	0,12
74	38,74	CITRONELLYL ACETATE	0,09
75	39,08	alpha-HUMULENE	0,09
76	39,37	Cis-4,5-MUUROLADIENE	0,05
77	39,48	E-beta-FARNESENE	0,02
78	39,90	gamma-TERPINEOL	0,10
79	40,26	gamma-MUUROLENE	0,17
80	40,53	alpha-TERPINEOL	0,96
81	40,75	BORNEOL	1,52
82	41,17	GERMACRENE D	0,04
83	41,52	CADINADIENE ISOMER	0,06
84	41,60	PELLANDRAL	0,08
85	41,90	beta-SELINENE	0,07
86	42,02	SESQUITERPENE	0,04
87	42,18	PIPERITONE	0,02
88	42,32	alpha-SELINENE	0,08
89	42,54	alpha-MUUROLENE	0,41
90	42,79	Trans-CARVYL ACETATE	0,04

**Disclaimer & Caution:**

Please refer to all relevant technical information specific to the product, prior to use, The information contained in this document is obtained from current and reliable sources, NIUXYSRCB Corp., provides the information contained herein, but makes no representation as to its comprehensiveness or accuracy, Individuals receiving this information must exercise their independent judgment in determining its appropriateness for a particular purpose, The user of the product is solely responsible for compliance with all laws and regulations applying to the use of the products, including intellectual property rights of third parties, As the ordinary or otherwise use(s) of this product is outside the control of NIUXYSRCB Corp., no representation or warranty, expressed or implied, is made as to the effect(s) of such use(s), (including damage or injury), or the results obtained, The liability of NIUXYSRCB Corp., is limited to the value of the goods and does not include any consequential loss, NIUXYSRCB Corp., shall not be liable for any errors or delays in the content, or for any actions taken in reliance thereon, NIUXYSRCB Corp., shall not be responsible for any damages resulting from use of or reliance upon this information, In the event of any dispute, the Customer hereby agrees that Jurisdiction is limited to the Philippines.



GCMS ANALYSIS (cont'd.)

PRODUCT NAME: SPRUCE ESSENTIAL OIL (BLACK WILD) - 11137

Peak	RT (min)	Compound name	%
91	44,09	alpha-FARNESENE	0,30
92	44,22	delta-CADINENE	1,36
93	44,34	gamma-CADINENE	0,38
94	44,63	CITRONELLOL	0,08
95	44,82	METHYL SALICYLATE	0,01
96	45,29	alpha-BISABOLENE	0,18
97	45,76	CADINA-1,4-DIENE + MYRTENOL	0,13
98	46,00	CAMPHOLENOL	0,04
99	46,16	SESQUITERPENE	0,03
100	46,29	alpha-AMORPHENE	0,11
101	46,55	SESQUITERPENE	0,04
102	48,22	COMPOUND Mw=152	0,03
103	48,36	Cis-CALAMENENE	0,14
104	48,70	Trans-CALAMENE	0,09
105	48,95	CAPROIC ACID	0,02
106	49,04	p-CYMENE-8-OL	0,03
107	49,40	GERANIOL	0,01
108	51,66	ALIPHATIC ESTER	0,02
109	52,71	alpha-CALACORENE	0,05
110	53,13	ALIPHATIC ALCOHOL	0,03
111	54,08	TERPENIC KETONE	0,02
112	54,73	SESQUITERPENIC OXID	0,10
113	55,88	1-DODECANOL	0,05
114	59,42	NEROLIDOL	0,03
115	59,99	SESQUITERPENIC OXID	0,02
116	60,22	épi-CUBENOL	0,08
117	60,36	SESQUITERPENOL	0,01
118	60,62	CUBENOL	0,05
119	60,97	SESQUITERPENOL	0,01
120	61,42	SESQUITERPENOL	0,02

**Disclaimer & Caution:**

Please refer to all relevant technical information specific to the product, prior to use, The information contained in this document is obtained from current and reliable sources, NIUXYSRCB Corp., provides the information contained herein, but makes no representation as to its comprehensiveness or accuracy, Individuals receiving this information must exercise their independent judgment in determining its appropriateness for a particular purpose, The user of the product is solely responsible for compliance with all laws and regulations applying to the use of the products, including intellectual property rights of third parties, As the ordinary or otherwise use(s) of this product is outside the control of NIUXYSRCB Corp., no representation or warranty, expressed or implied, is made as to the effect(s) of such use(s), (including damage or injury), or the results obtained, The liability of NIUXYSRCB Corp., is limited to the value of the goods and does not include any consequential loss, NIUXYSRCB Corp., shall not be liable for any errors or delays in the content, or for any actions taken in reliance thereon, NIUXYSRCB Corp., shall not be responsible for any damages resulting from use of or reliance upon this information, In the event of any dispute, the Customer hereby agrees that Jurisdiction is limited to the Philippines.

GCMS ANALYSIS (cont'd.)

PRODUCT NAME: SPRUCE ESSENTIAL OIL (BLACK WILD) - 11137

Peak	RT (min)	Compound name	%
121	65,71	T-CADINOL	0,26
122	66,53	alpha-MUUROLOL	0,25
123	67,05	delta-CADINOL	0,07
124	67,66	AROMATIC COMPOUND	0,03
125	68,61	alpha-CADINOL	0,45
126	73,03	DITERPENE Mw=272	0,02
127	73,19	SANDAROCOPIMARADIENE Mw=272	0,03
128	74,15	AROMATIC COMPOUND	0,03
129	74,81	MANOYL OXIDE	0,02
130	75,19	AROMATIC COMPOUND	0,03
131	78,18	AROMATIC COMPOUND	0,05
132	78,98	AROMATIC COMPOUND	0,01
133	79,19	AROMATIC COMPOUND	0,02
134	80,35	AROMATIC COMPOUND	0,02
135	82,45	GERANYLLINALOOL ISOMER	0,03
136	87,49	MANOOL	0,09
137	95,83	AROMATIC COMPOUND	0,02
138	96,79	PALMITIC ACID	0,08
		<b>TOTAL</b>	<b>100,00</b>

**Disclaimer & Caution:**

Please refer to all relevant technical information specific to the product, prior to use, The information contained in this document is obtained from current and reliable sources, NIUXYSRCB Corp., provides the information contained herein, but makes no representation as to its comprehensiveness or accuracy, Individuals receiving this information must exercise their independent judgment in determining its appropriateness for a particular purpose, The user of the product is solely responsible for compliance with all laws and regulations applying to the use of the products, including intellectual property rights of third parties, As the ordinary or otherwise use(s) of this product is outside the control of NIUXYSRCB Corp., no representation or warranty, expressed or implied, is made as to the effect(s) of such use(s), (including damage or injury), or the results obtained, The liability of NIUXYSRCB Corp., is limited to the value of the goods and does not include any consequential loss, NIUXYSRCB Corp., shall not be liable for any errors or delays in the content, or for any actions taken in reliance thereon, NIUXYSRCB Corp., shall not be responsible for any damages resulting from use of or reliance upon this information, In the event of any dispute, the Customer hereby agrees that Jurisdiction is limited to the Philippines.