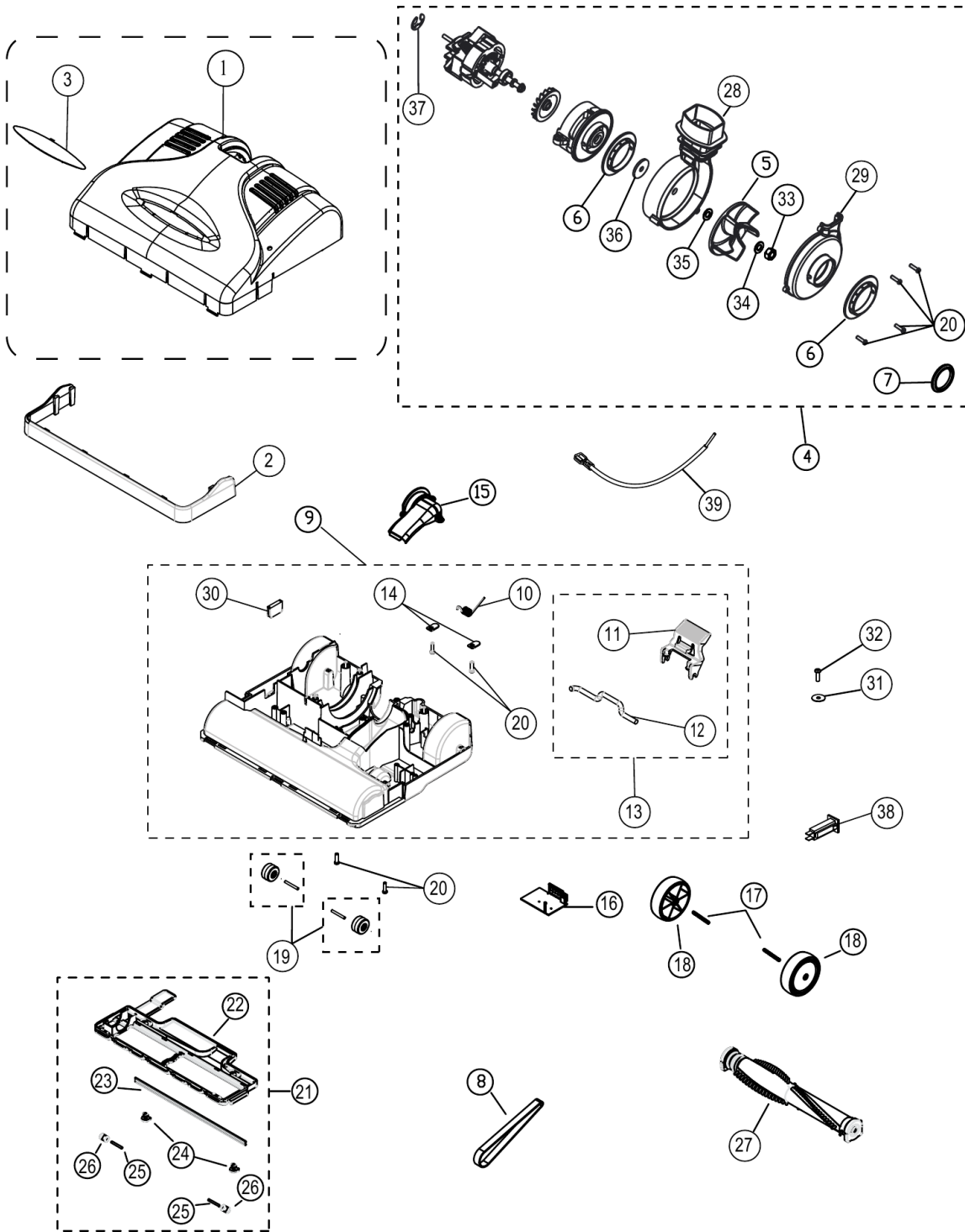


ZM-500

# TABLE OF CONTENTS

Nozzle Assembly .....	3
Wiring Diagram .....	6
Handle and Body .....	8

# Nozzle Assembly



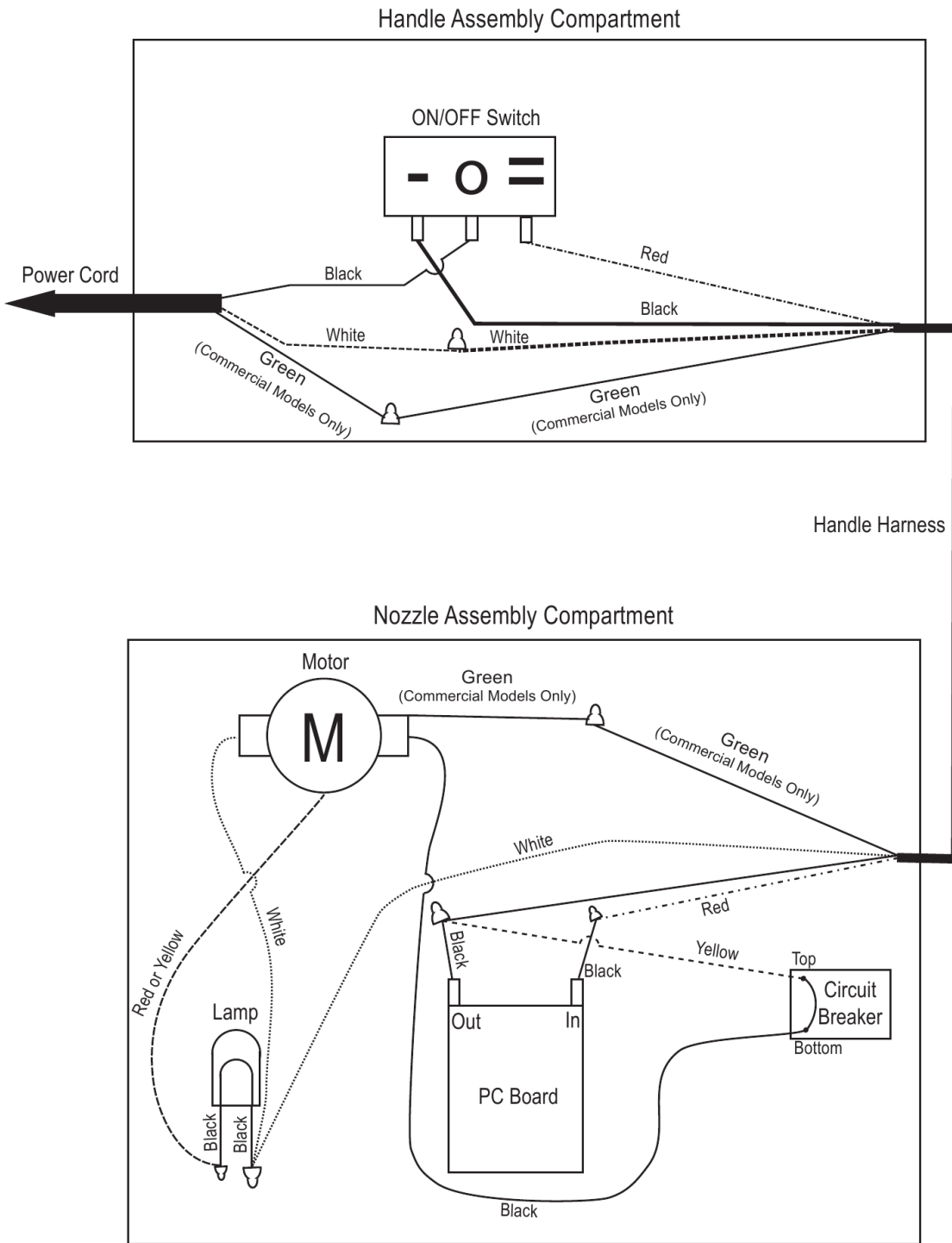
Rendered by LeadVenture, Inc.

## Nozzle Assembly

<b>Ref Number</b>	<b>Part Number</b>	<b>Part Description</b>	<b>Context Notes</b>	<b>Quantity</b>
1	B220-24ZM	Nozzle Cover		1
2	B220-2600	Clear Furniture Guard		1
3	B018-0414	Lens Cover		1
4	D220-4000	Motor Assembly		1
5	B220-4314	Motor Fan		1
6	B220-4414	Pivot Bushing		2
7	B480-4514	Motor Inlet Seal		1
8	CMZM-B2	Belt (2 Pack)		1
8	B014-0814B	Belt		1
9	D220-0114	Basetray Assembly		1
10	B220-0900	Spring		1
11	B220-0714	Pedal		1
12	B220-0800	Pedal Pivot		1
13	D220-0714	Upright Stop Pedal Assembly		1
14	54.136	Axle Clamp		2
15	B220-0214	Inlet Duct Cover		1
16	B317-0000K	PC Board		1
17	B010-2800C	Rear Wheel Axle		2
18	C220-0531C	Rear Wheel w/Bushing		2
19	D010-2631	Front Wheel Assembly		1
20	A732-8314	Screw #8-18 x 5/8"		2
21	D220-0414	Baseplate Assembly		1
21	D220-1414	Soft Carpet Baseplate (Optional)		1
22	Order #21	Baseplate Cover		1
23	B015-3000B	Squeegee		1
24	B220-0414	Baseplate Cover Screw		2

<b>Ref Number</b>	<b>Part Number</b>	<b>Part Description</b>	<b>Context Notes</b>	<b>Quantity</b>
25	B370-1700B	Baseplate Axle		2
26	B370-1843	Baseplate Wheel		2
27	D012-2800	Wood Agitator w/End Caps		1
28	B220-4014	Scroll Housing Right		1
29	B220-4114	Scroll Housing Left		1
30	B016-1914	Basetray Plug		1
31	B034-0100	Nylon Washer		1
32	A732-2500	Screw M4 x 12		1
33	A432-0605	Nut		1
34	A733-2200	Washer Over Fan		1
35	A733-3300	Washer Under Fan		1
36	B220-4500	Felt Seal		1
37	A732-3000	E Clip		1
38	A028-0114B	Circuit Breaker 5A		1
39	B333-1100B	Ground Wire		1

# Wiring Diagram

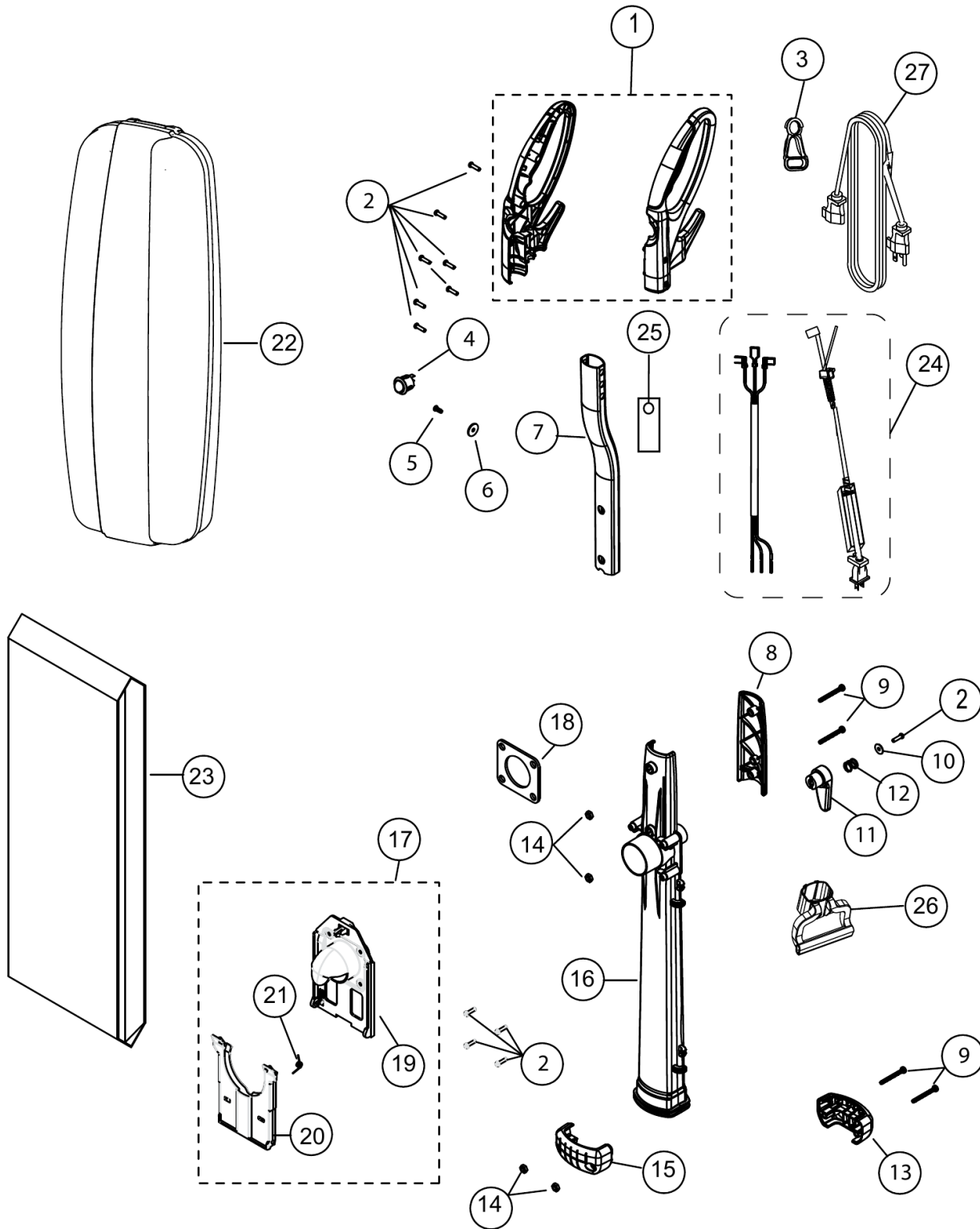


Rendered by LeadVenture, Inc.

Wiring Diagram

Ref Number	Part Number	Part Description	Context Notes	Quantity
------------	-------------	------------------	---------------	----------

# Handle and Body



Rendered by LeadVenture, Inc.



## Handle and Body

<b>Ref Number</b>	<b>Part Number</b>	<b>Part Description</b>	<b>Context Notes</b>	<b>Quantity</b>
1	C220-3514	Handle Grip Assembly		1
2	A732-8314	Screw #8-18 x 5/8"		12
3	B352-6900	Cord Hook		1
4	A328-1700	Two Speed Switch		1
5	A732-8414	Screw #8 x 7/16"		1
6	B017-2500	Nylon Washer		1
7	B220-3400	Handle Tube		1
8	B220-3114	Handle Back Cover		1
9	A432-0705	Screw #10-32 x 1-5/8"		4
10	A430-0405	Washer		1
11	B220-3314	Swivel Cord Hook		1
12	B430-0200	Upper Cord Hook Spring		1
13	B220-1114	Back Neck Coupling		1
14	A432-0805	Nut		1
15	B220-1014	Front Neck Coupling		1
16	B220-3014C	Handle Duct		1
17	D484-2282	Bag Mount Assembly		1
18	B220-3900	Bag Mount Seal		1
19	B220-3814	Bag Mount		1
20	B434-2282	Bag Mount Hinge		1
21	B434-3400	Bag Collar Spring		1
22	B220-6800	Hard Shell Bag		1
23	B220-5382C	HEPA Bag (Bulk Single)		1
23	CLH-6	HEPA Bag (6 Pack)		1
23	B211-8800	Paper Bag (Bulk Single)		1

<b>Ref Number</b>	<b>Part Number</b>	<b>Part Description</b>	<b>Context Notes</b>	<b>Quantity</b>
24	D434-3714B	Pigtail And Handle Harness Assembly		1
	D434-3814	Pigtail Cord Assembly		AR
25	B388-5900	Handle Spacer		1
26	B220-6214	Carry Handle		1
27	CMPS-EXT30	Extension Cord 30'		1