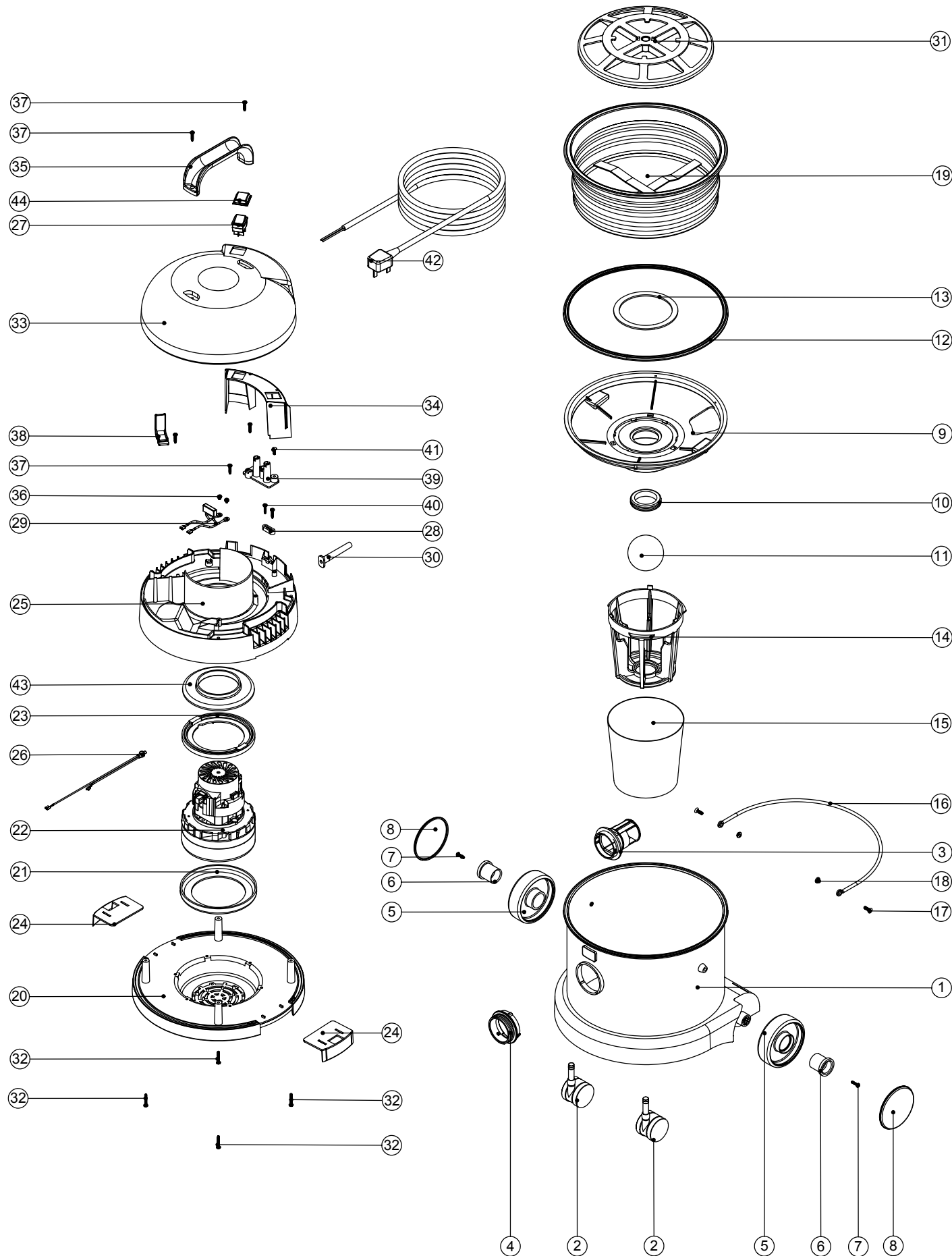


Numatic International Spare Parts

Model No: WV370-2 / WV380-2 EXPLODED DRAWING

234335

DRAWING: EXP-0766 ISS:A01
13/04/2005



Numatic International Spare Parts

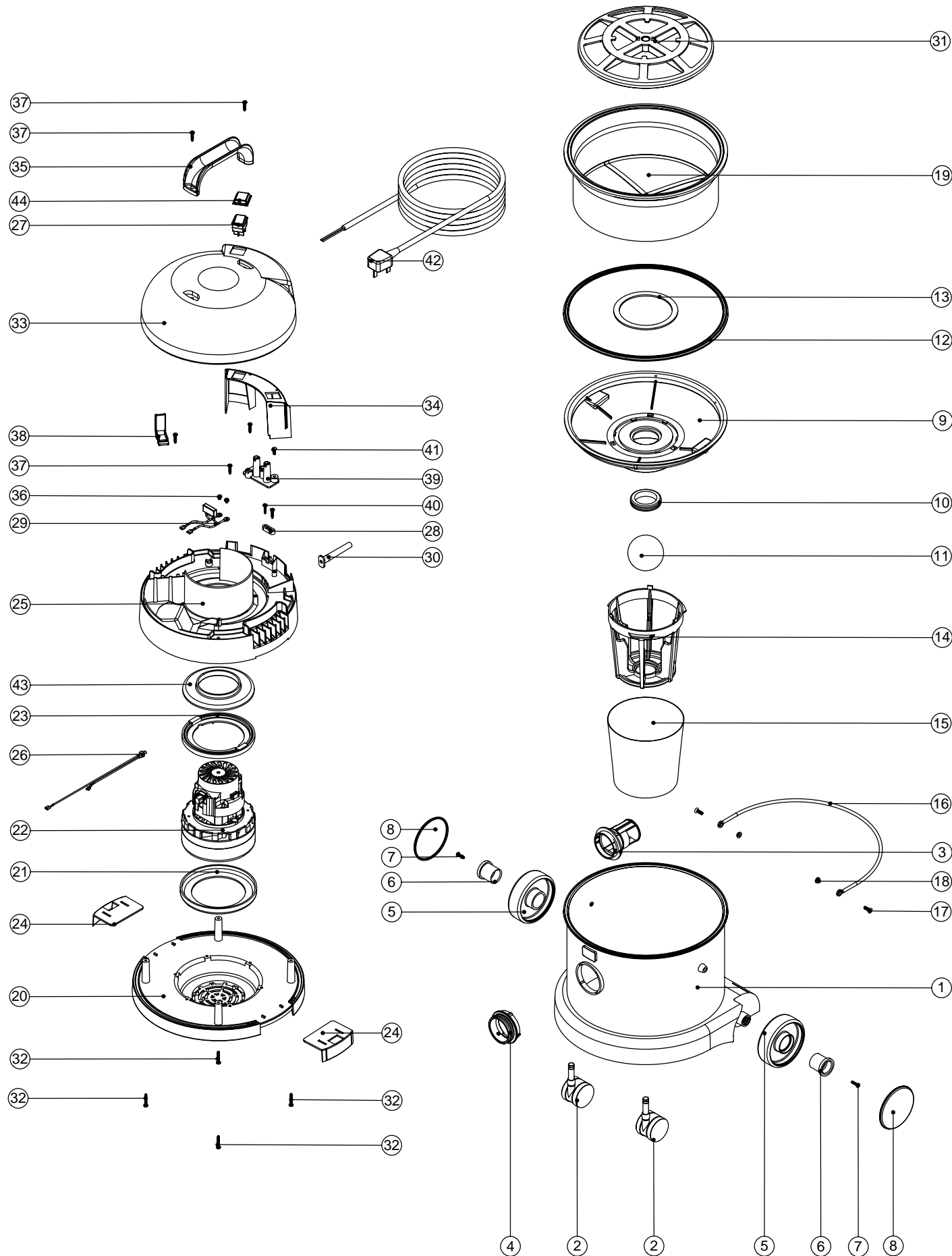
Model No: WV370-2 / WV380-2 EXPLODED DRAWING

POS:	ITEM NO:	DESCRIPTION:	COMMENTS:
1	325426	BLUE DRUM ASSEMBLY	WV370-2
	325425	RED DRUM ASSEMBLY	WV370-2
	325427	GREEN DRUM ASSEMBLY	WV370-2
	325428	YELLOW DRUM ASSEMBLY	WV370-2
	225981	BLUE DRUM ASSEMBLY	WV380-2
	225980	RED DRUM ASSEMBLY	WV380-2
	225982	GREEN DRUM ASSEMBLY	WV380-2
	225983	YELLOW DRUM ASSEMBLY	WV380-2
	225210	GREY DRUM ASSEMBLY	WV380-2
	250028	FUN FACE	
2	204111	50MM TWIN WHEEL CASTOR WITH PU TYRE	WV370-2
	204059	2 INCH CASTOR	WV380-2
3	206493	WET DRY CONNECTOR	WV370-2
	225085	BAG CONNECTOR	WV380-2
4	227397	BLUE THREADED NECK	
	227396	RED THREADED NECK	
	227398	GREEN THREADED NECK	
	227399	YELLOW THREADED NECK	
5	227640	2 SHOT WHEEL ASSEMBLY	
6	227868	WHEEL HUB FOR 2 SHOT WHEEL	
7	219105	No8 X 5/8 INCH LONG POZI PAN PLASTITE SCREW	
8	227638	BLACK TRIM	
9	225087	FLOAT CAGE SUPPORT	
10	220235	FLOAT GROMMET	
11	206026	POLYPROP BALL	
12	207011	FLOAT CAGE GASKET	
13	225083	FLOAT ASSEMBLY GASKET	
14	225086	FLOAT CAGE	
15	207055	GAUZE FILTER	
16	403039	BUCKET HANDLE	
17	219282	M5 X 16MM LONG POZI PAN COUNTERSUNK SCREW	
18	208026	BUCKET HANDLE SPACER	
19	207098	WHITE FILTER (SMS) + U GASKET	
20	227921	BOTTOM MOTOR HOUSING	
21	202031	BOTTOM MOTOR GASKET	
22	205411	240V 2 STAGE D.I BYPASS ACUSTEK MOTOR (BL21104)(MARKED 230V)	
	205409	120V 2 STAGE D.I BYPASS ACUSTEK MOTOR (BL21101)	
23	227925	TOP MOTOR GASKET	
24	227115	TOGGLE	
25	227923	TOP MOTOR HOUSING	
26	230078	240/220V THERMAL OVERLOAD	
27	220843	BLUE ROCKER SWITCH	
28	227008	BLACK CABLE CLAMP	
29	220698	SUPPRESSOR ASSEMBLY	
30	220923	STRESS RELIEF	
31	209050	SINGLE FILTER GRID	
32	219369	No8 X 1 INCH LONG POZI PAN STAINLESS STEEL PLASTITE SCREW	
33	227919	SWITCH COVER TOP	
34	227927	SWITCH MOUNTING BRACKET	
35	206451	HANDLE	
36	219090	M4 X 8MM LONG POZI PAN SEMS SCREW	
37	219041	No8 X 3/4 INCH LONG POZI PAN SCREW	
38	227019	CABLE HOOK	
39	220564	TERMINAL BLOCK MOULDING (2 INSERTS)	
40	219107	No6 X 5/8 INCH LONG POZI PAN PLASTITE SCREW	
	236034	10.0M X 1.00MM X 2 CORE CABLE (EURO PLUG)	
	236036	10.0M X 1.00MM X 2 CORE CABLE (RSA PLUG)	
	236049	10MT X 2 CORE X 1.5MM CABLE PLUS 16AMP INDUSTRIAL PLUG	
	236047	10.0M X .75MM X 2 CORE CABLE + SWISS PLUG	
41	219101	No8 X 1/2 INCH LONG POZI PAN PLASTITE SCREW	
42	236033	10.0M X 1.00MM X 2 CORE CABLE (UK PLUG)	
43	227926	AIR SEPERATOR	
44	206573	SWITCH COVER (PLUG HANDLE)	

Numatic International Spare Parts

Model No: WV370-2 / WV380-2 EXPLODED DRAWING

234335
DRAWING: EXP-0766 ISS:A03
11/01/2006



Numatic International Spare Parts

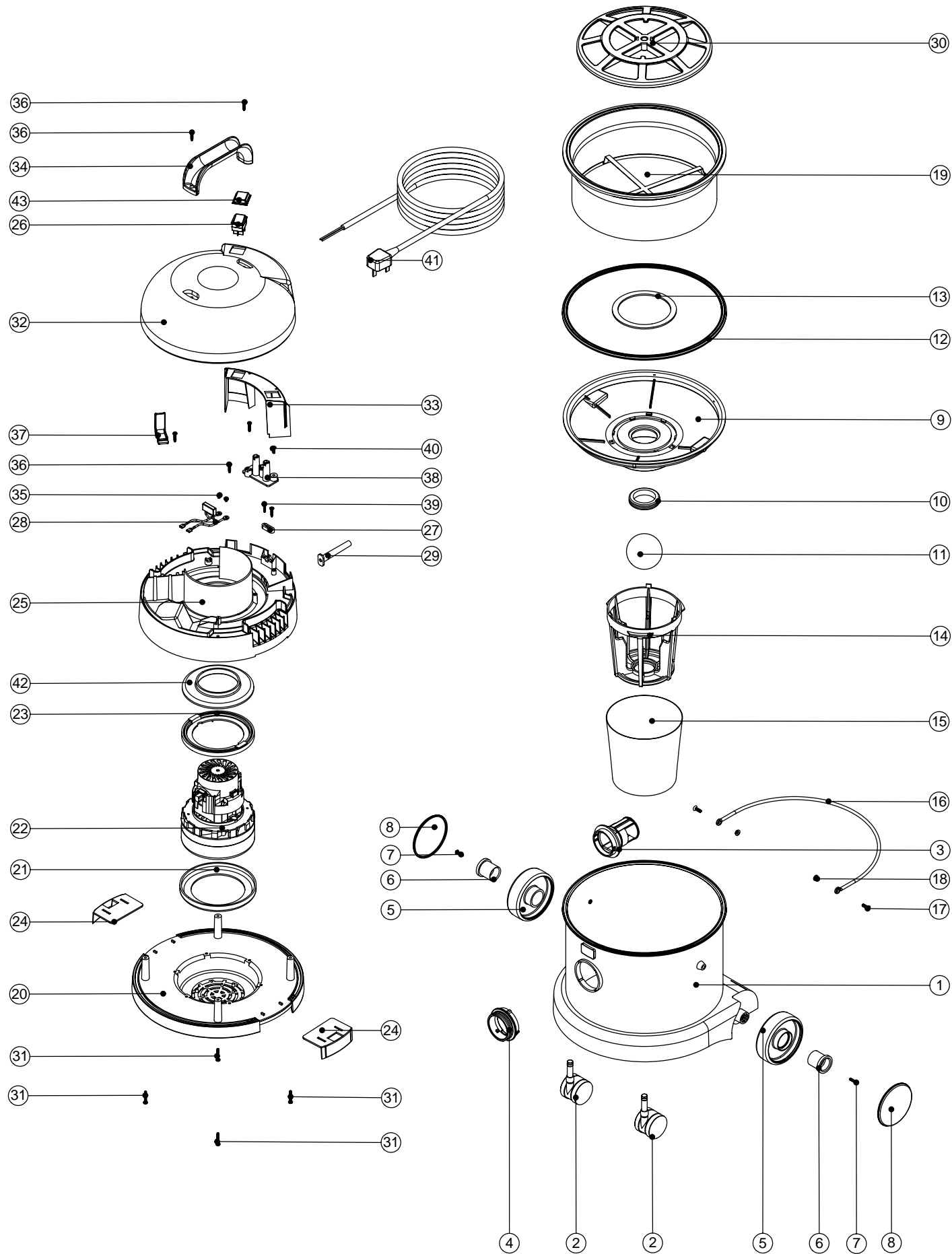
Model No: WV370-2 / WV380-2 EXPLODED DRAWING

POS:	ITEM NO:	DESCRIPTION:	COMMENTS:
1	325426	BLUE DRUM ASSEMBLY	WV370-2
	325425	RED DRUM ASSEMBLY	WV370-2
	325427	GREEN DRUM ASSEMBLY	WV370-2
	325428	YELLOW DRUM ASSEMBLY	WV370-2
	225981	BLUE DRUM ASSEMBLY	WV380-2
	225980	RED DRUM ASSEMBLY	WV380-2
	225982	GREEN DRUM ASSEMBLY	WV380-2
	225983	YELLOW DRUM ASSEMBLY	WV380-2
	225210	GREY DRUM ASSEMBLY	WV380-2
	250028	FUN FACE	
2	204111	50MM TWIN WHEEL CASTOR WITH PU TYRE	WV370-2
	204059	2 INCH CASTOR	WV380-2
3	206493	WET DRY CONNECTOR	WV370-2
	225085	BAG CONNECTOR	WV380-2
4	227397	BLUE THREADED NECK	
	227396	RED THREADED NECK	
	227398	GREEN THREADED NECK	
	227399	YELLOW THREADED NECK	
5	227640	2 SHOT WHEEL ASSEMBLY	
6	227868	WHEEL HUB FOR 2 SHOT WHEEL	
7	219105	No8 X 5/8 INCH LONG POZI PAN PLASTITE SCREW	
8	227638	BLACK TRIM	
9	229635	FLOAT CAGE SUPPORT	
10	220235	FLOAT GROMMET	
11	206026	POLYPROP BALL	
12	207011	FLOAT CAGE GASKET	
13	225083	FLOAT ASSEMBLY GASKET	
14	225086	FLOAT CAGE	
15	207055	GAUZE FILTER	
16	403039	BUCKET HANDLE	
17	219282	M5 X 16MM LONG POZI PAN COUNTERSUNK SCREW	
18	208026	BUCKET HANDLE SPACER	
19	207109	12 INCH FILTER (DOUBLE BOTTOM) 160GRM SMS	
20	227921	BOTTOM MOTOR HOUSING	
21	202031	BOTTOM MOTOR GASKET	
22	205411	240V 2 STAGE D.I BYPASS ACUSTEK MOTOR (BL21104)(MARKED 230V)	
	205409	120V 2 STAGE D.I BYPASS ACUSTEK MOTOR (BL21101)	
23	227925	TOP MOTOR GASKET	
24	227115	TOGGLE	
25	227923	TOP MOTOR HOUSING	
26	230078	240/220V THERMAL OVERLOAD	
27	220843	BLUE ROCKER SWITCH	
28	227008	BLACK CABLE CLAMP	
29	220698	SUPPRESSOR ASSEMBLY	
30	220923	STRESS RELIEF	
31	209050	SINGLE FILTER GRID	
32	219369	No8 X 1 INCH LONG POZI PAN STAINLESS STEEL PLASTITE SCREW	
33	227919	SWITCH COVER TOP	
34	227927	SWITCH MOUNTING BRACKET	
35	206451	HANDLE	
36	219090	M4 X 8MM LONG POZI PAN SEMS SCREW	
37	219041	No8 X 3/4 INCH LONG POZI PAN SCREW	
38	227019	CABLE HOOK	
39	220564	TERMINAL BLOCK MOULDING (2 INSERTS)	
40	219107	No6 X 5/8 INCH LONG POZI PAN PLASTITE SCREW	
41	219101	No8 X 1/2 INCH LONG POZI PAN PLASTITE SCREW	
42	236033	10.0M X 1.00MM X 2 CORE CABLE (UK PLUG)	
	236034	10.0M X 1.00MM X 2 CORE CABLE (EURO PLUG)	
	236036	10.0M X 1.00MM X 2 CORE CABLE (RSA PLUG)	
	236049	10MT X 2 CORE X 1.5MM CABLE PLUS 16AMP INDUSTRIAL PLUG	
	236047	10.0M X .75MM X 2 CORE CABLE + SWISS PLUG	
43	227926	AIR SEPERATOR	
44	206573	SWITCH COVER (PLUG HANDLE)	

Numatic International Spare Parts

Model No: WV370-2 / WV380-2 EXPLODED DRAWING

234335
DRAWING: EXP-0766 ISS:A04
17/8/2006



Numatic International Spare Parts

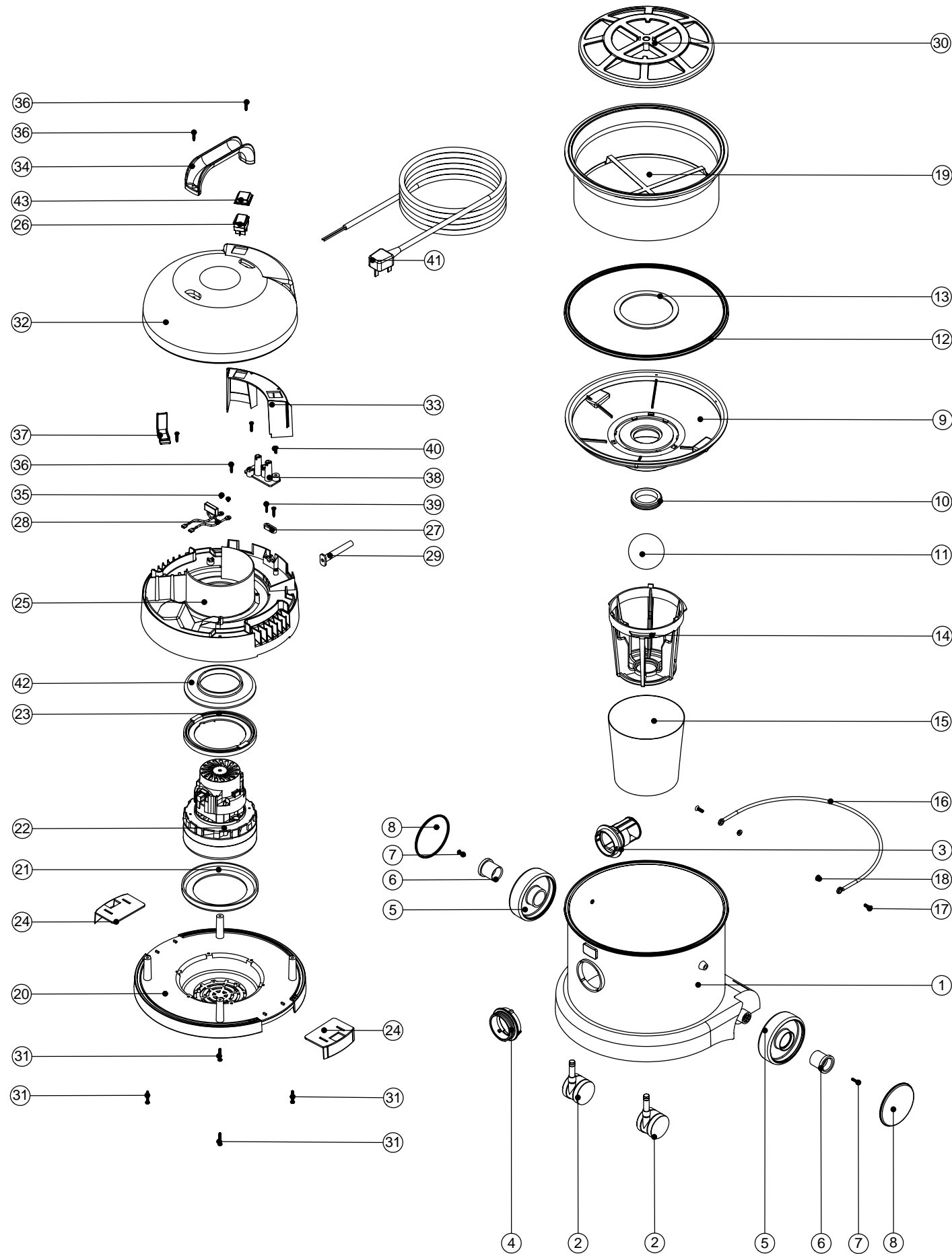
Model No: WV370-2 / WV380-2 EXPLODED DRAWING

POS:	ITEM NO:	DESCRIPTION:	COMMENTS:
1	325426	BLUE DRUM ASSEMBLY	WV370-2
	325425	RED DRUM ASSEMBLY	WV370-2
	325427	GREEN DRUM ASSEMBLY	WV370-2
	325428	YELLOW DRUM ASSEMBLY	WV370-2
	225981	BLUE DRUM ASSEMBLY	WV380-2
	225980	RED DRUM ASSEMBLY	WV380-2
	225982	GREEN DRUM ASSEMBLY	WV380-2
	225983	YELLOW DRUM ASSEMBLY	WV380-2
	225210	GREY DRUM ASSEMBLY	WV380-2
	250028	FUN FACE	
2	204111	50MM TWIN WHEEL CASTOR WITH PU TYRE	WV370-2
	204059	2 INCH CASTOR	WV380-2
3	206493	WET DRY CONNECTOR	WV370-2
	225085	BAG CONNECTOR	WV380-2
4	227397	BLUE THREADED NECK	
	227396	RED THREADED NECK	
	227398	GREEN THREADED NECK	
	227399	YELLOW THREADED NECK	
5	227640	2 SHOT WHEEL ASSEMBLY	
6	227868	WHEEL HUB FOR 2 SHOT WHEEL	
7	219105	No8 X 5/8 INCH LONG POZI PAN PLASTITE SCREW	
8	227638	BLACK TRIM	
9	229635	FLOAT CAGE SUPPORT	
10	220235	FLOAT GROMMET	
11	206026	POLYPROP BALL	
12	207011	FLOAT CAGE GASKET	
13	225083	FLOAT ASSEMBLY GASKET	
14	225086	FLOAT CAGE	
15	207055	GAUZE FILTER	
16	403039	BUCKET HANDLE	
17	219282	M5 X 16MM LONG POZI PAN COUNTERSUNK SCREW	
18	208026	BUCKET HANDLE SPACER	
19	207109	12 INCH FILTER (DOUBLE BOTTOM) 160GRM SMS	
20	227921	BOTTOM MOTOR HOUSING	
21	202031	BOTTOM MOTOR GASKET	
22	205443	240V 2 STAGE D.I BYPASS ACUSTEK MOTOR (BL21104T) (MARKED 230V) TCO	
	205441	120V 2 STAGE D.I BYPASS ACUSTEK MOTOR (BL21101)	
23	227925	TOP MOTOR GASKET	
24	227115	TOGGLE	
25	227923	TOP MOTOR HOUSING	
26	220843	BLUE ROCKER SWITCH	
27	227008	BLACK CABLE CLAMP	
28	220698	SUPPRESSOR ASSEMBLY	
29	220923	STRESS RELIEF	
30	209050	SINGLE FILTER GRID	
31	219369	No8 X 1 INCH LONG POZI PAN STAINLESS STEEL PLASTITE SCREW	
32	227919	SWITCH COVER TOP	
33	227927	SWITCH MOUNTING BRACKET	
34	206451	HANDLE	
35	219090	M4 X 8MM LONG POZI PAN SEMS SCREW	
36	219041	No8 X 3/4 INCH LONG POZI PAN SCREW	
37	227019	CABLE HOOK	
38	220564	TERMINAL BLOCK MOULDING (2 INSERTS)	
39	219107	No6 X 5/8 INCH LONG POZI PAN PLASTITE SCREW	
40	219101	No8 X 1/2 INCH LONG POZI PAN PLASTITE SCREW	
41	236033	10.0M X 1.00MM X 2 CORE CABLE (UK PLUG)	
	236034	10.0M X 1.00MM X 2 CORE CABLE (EURO PLUG)	
	236036	10.0M X 1.00MM X 2 CORE CABLE (RSA PLUG)	
	236049	10MT X 2 CORE X 1.5MM CABLE PLUS 16AMP INDUSTRIAL PLUG	
	236047	10.0M X .75MM X 2 CORE CABLE + SWISS PLUG	
42	227926	AIR SEPERATOR	
43	206573	SWITCH COVER (PLUG HANDLE)	

Numatic International Spare Parts

Model No: WV370-2 / WV380-2 EXPLODED DRAWING

234335
DRAWING: EXP-0766 ISS:A05
14/08/2007



Numatic International Spare Parts

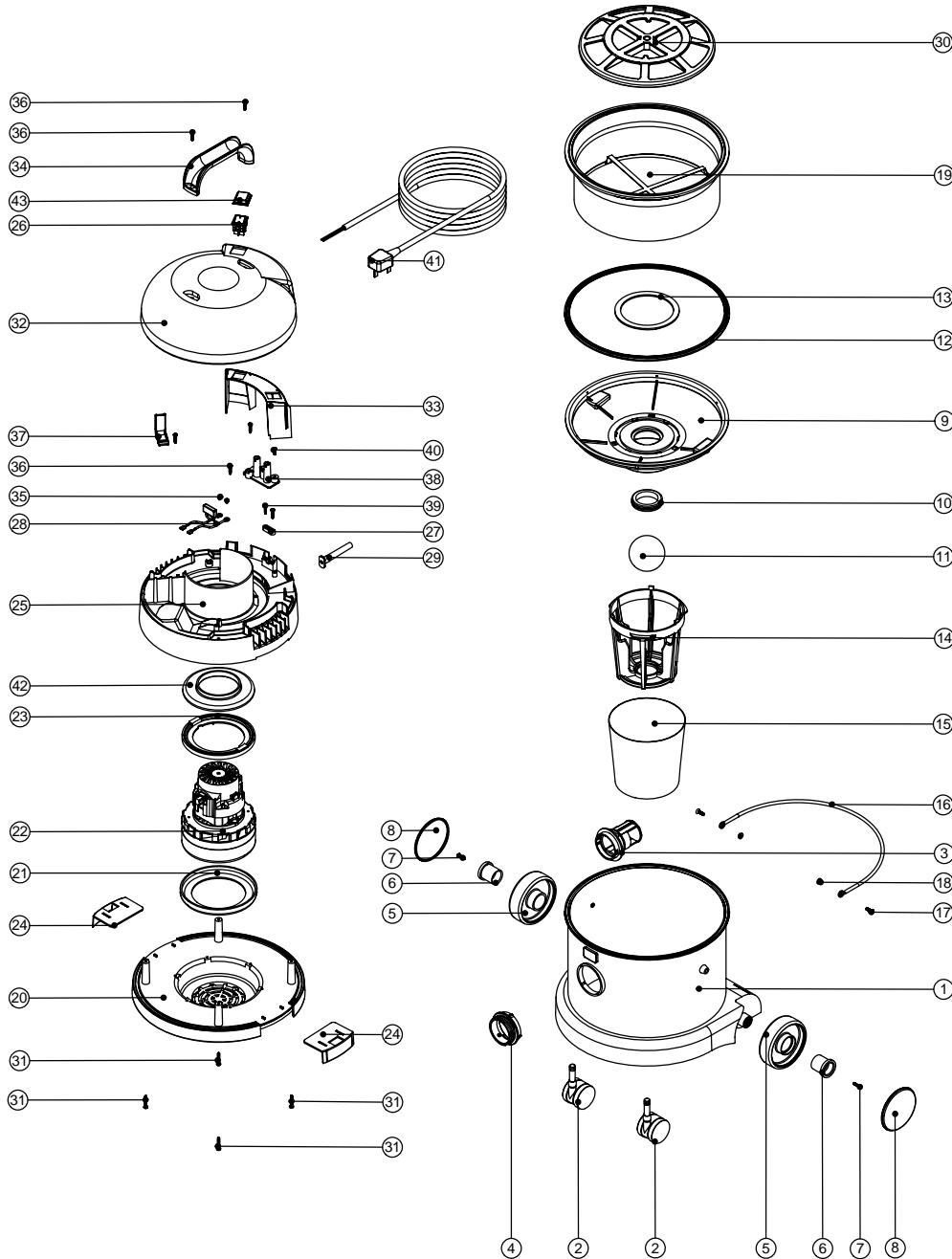
Model No: WV370-2 / WV380-2 EXPLODED DRAWING

POS:	ITEM NO:	DESCRIPTION:	COMMENTS:
1	325426	BLUE DRUM ASSEMBLY	WV370-2
	325425	RED DRUM ASSEMBLY	WV370-2
	325427	GREEN DRUM ASSEMBLY	WV370-2
	325428	YELLOW DRUM ASSEMBLY	WV370-2
	225981	BLUE DRUM ASSEMBLY	WV380-2
	225980	RED DRUM ASSEMBLY	WV380-2
	225982	GREEN DRUM ASSEMBLY	WV380-2
	225983	YELLOW DRUM ASSEMBLY	WV380-2
	225210	GREY DRUM ASSEMBLY	WV380-2
	250028	FUN FACE	
2	204111	50MM TWIN WHEEL CASTOR WITH PU TYRE	WV370-2
	204059	2 INCH CASTOR	WV380-2
3	206493	WET DRY CONNECTOR	WV370-2
	225085	BAG CONNECTOR	WV380-2
4	227397	BLUE THREADED NECK	
	227396	RED THREADED NECK	
	227398	GREEN THREADED NECK	
	227399	YELLOW THREADED NECK	
5	227640	2 SHOT WHEEL ASSEMBLY	
6	227868	WHEEL HUB FOR 2 SHOT WHEEL	
7	219105	No8 X 5/8 INCH LONG POZI PAN PLASTITE SCREW	
8	227638	BLACK TRIM	
9	229635	FLOAT CAGE SUPPORT	
10	220235	FLOAT GROMMET	
11	206026	POLYPROP BALL	
12	207011	FLOAT CAGE GASKET	
13	225083	FLOAT ASSEMBLY GASKET	
14	225086	FLOAT CAGE	
15	207055	GAUZE FILTER	
16	403039	BUCKET HANDLE	
17	219282	M5 X 16MM LONG POZI PAN COUNTERSUNK SCREW	
18	208026	BUCKET HANDLE SPACER	
19	207109	12 INCH FILTER (DOUBLE BOTTOM) 160GRM SMS	INCLUDES ITEM 30 (209050)
20	227921	BOTTOM MOTOR HOUSING	
21	202031	BOTTOM MOTOR GASKET	
22	205443	240V 2 STAGE D.I BYPASS ACUSTEK MOTOR (BL21104T) (MARKED 230V) TCO	
	205441	120V 2 STAGE D.I BYPASS ACUSTEK MOTOR (BL21101)	
23	227925	TOP MOTOR GASKET	
24	227115	TOGGLE	
25	227923	TOP MOTOR HOUSING	
26	220843	BLUE ROCKER SWITCH	
27	227008	BLACK CABLE CLAMP	
28	220698	SUPPRESSOR ASSEMBLY	
29	220923	STRESS RELIEF	
30	209050	SINGLE FILTER GRID	
31	219369	No8 X 1 INCH LONG POZI PAN STAINLESS STEEL PLASTITE SCREW	
32	227919	SWITCH COVER TOP	
33	227927	SWITCH MOUNTING BRACKET	
34	206451	HANDLE	
35	219090	M4 X 8MM LONG POZI PAN SEMS SCREW	
36	219041	No8 X 3/4 INCH LONG POZI PAN SCREW	
37	227019	CABLE HOOK	
38	220564	TERMINAL BLOCK MOULDING (2 INSERTS)	
39	219107	No6 X 5/8 INCH LONG POZI PAN PLASTITE SCREW	
40	219101	No8 X 1/2 INCH LONG POZI PAN PLASTITE SCREW	
41	236033	10.0M X 1.00MM X 2 CORE CABLE (UK PLUG)	
	236034	10.0M X 1.00MM X 2 CORE CABLE (EURO PLUG)	
	236036	10.0M X 1.00MM X 2 CORE CABLE (RSA PLUG)	
	236049	10MT X 2 CORE X 1.5MM CABLE PLUS 16AMP INDUSTRIAL PLUG	
	236047	10.0M X .75MM X 2 CORE CABLE + SWISS PLUG	
42	227926	AIR SEPERATOR	
43	206573	SWITCH COVER (PLUG HANDLE)	

Numatic International Spare Parts

Model No: WV370-2 / WV380-2 EXPLODED DRAWING

234335
DRAWING: EXP-0766 ISS:A06
26/06/2008



Numatic International Spare Parts

Model No: WV370-2 / WV380-2 EXPLODED DRAWING

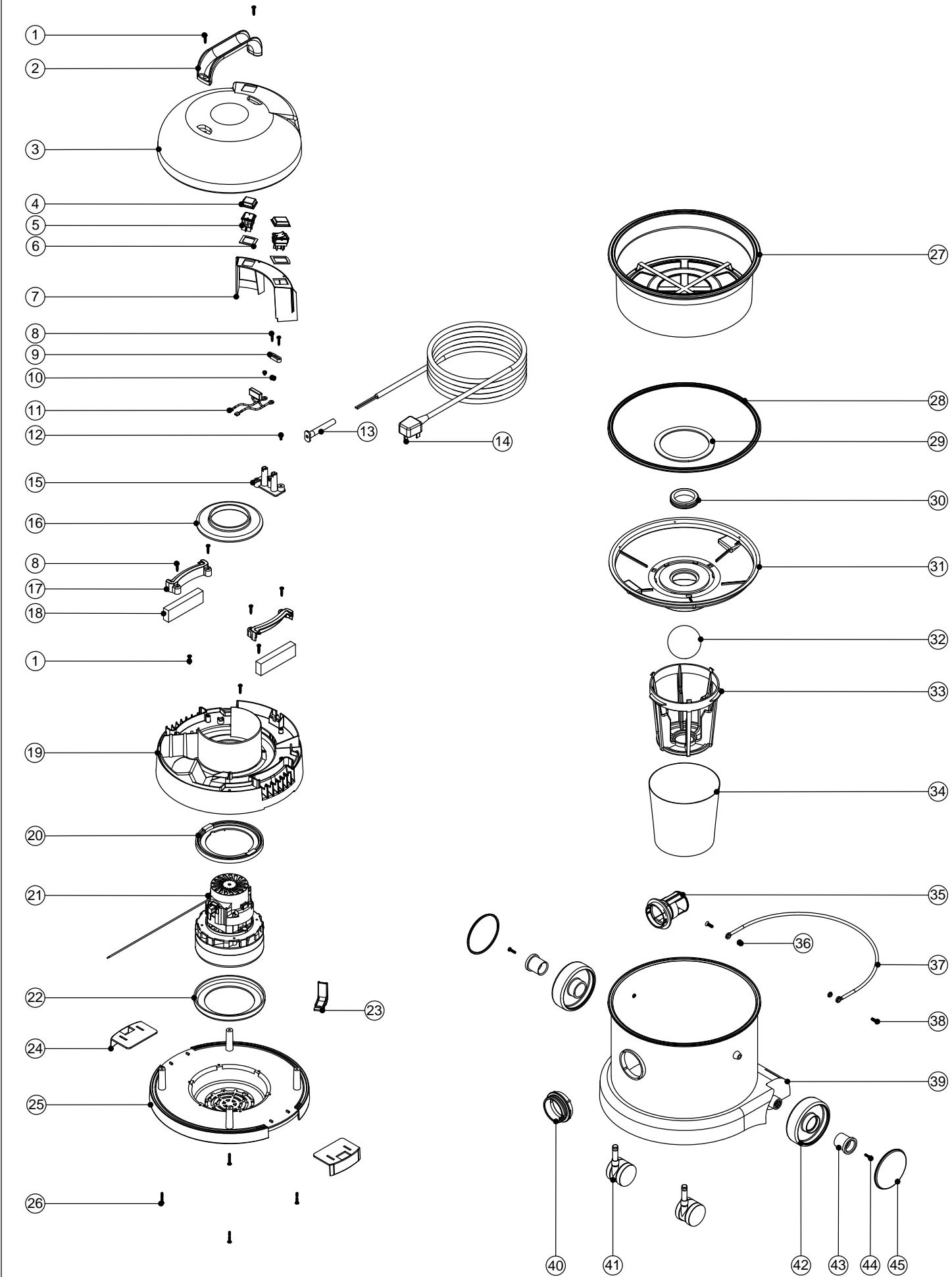
POS:	ITEM NO:	DESCRIPTION:	COMMENTS:
1	325426	BLUE DRUM ASSEMBLY	WV370-2
	325425	RED DRUM ASSEMBLY	WV370-2
	325427	GREEN DRUM ASSEMBLY	WV370-2
	325428	YELLOW DRUM ASSEMBLY	WV370-2
	225981	BLUE DRUM ASSEMBLY	WV380-2
	225980	RED DRUM ASSEMBLY	WV380-2
	225982	GREEN DRUM ASSEMBLY	WV380-2
	225983	YELLOW DRUM ASSEMBLY	WV380-2
	225210	GREY DRUM ASSEMBLY	WV380-2
	250028	FUN FACE	
2	204111	50MM TWIN WHEEL CASTOR WITH PU TYRE	WV370-2
	204059	2 INCH CASTOR	WV380-2
3	206493	WET DRY CONNECTOR	WV370-2
	225085	BAG CONNECTOR	WV380-2
4	227397	BLUE THREADED NECK	
	227396	RED THREADED NECK	
	227398	GREEN THREADED NECK	
	227399	YELLOW THREADED NECK	
5	227640	2 SHOT WHEEL ASSEMBLY	
6	227868	WHEEL HUB FOR 2 SHOT WHEEL	
7	219105	No8 X 5/8 INCH LONG POZI PAN PLASTITE SCREW	
8	227638	BLACK TRIM	
9	229635	FLOAT CAGE SUPPORT	
10	220235	FLOAT GROMMET	
11	206026	POLYPROP BALL	
12	207011	FLOAT CAGE GASKET	
13	225083	FLOAT ASSEMBLY GASKET	
14	225086	FLOAT CAGE	
15	207055	GAUZE FILTER	
16	403039	BUCKET HANDLE	
17	219282	M5 X 16MM LONG POZI PAN COUNTERSUNK SCREW	
18	208026	BUCKET HANDLE SPACER	
19	207109	12 INCH FILTER (DOUBLE BOTTOM) 160GRM SMS	INCLUDES ITEM 30 (209050)
20	227921	BOTTOM MOTOR HOUSING	
21	202031	BOTTOM MOTOR GASKET	
22	205443	240V 2 STAGE D.I BYPASS ACUSTEK MOTOR (BL21104T) (MARKED 230V) TCO	
	205441	120V 2 STAGE D.I BYPASS ACUSTEK MOTOR (BL21101)	
23	227925	TOP MOTOR GASKET	
24	227115	TOGGLE	
25	227923	TOP MOTOR HOUSING	
26	220843	BLUE ROCKER SWITCH	
27	227008	BLACK CABLE CLAMP	
28	220698	SUPPRESSOR ASSEMBLY	
29	220923	STRESS RELIEF	
30	209050	SINGLE FILTER GRID	
31	219369	No8 X 1 INCH LONG POZI PAN STAINLESS STEEL PLASTITE SCREW	
32	227919	SWITCH COVER TOP	
33	227927	SWITCH MOUNTING BRACKET	
34	206451	HANDLE	
35	219090	M4 X 8MM LONG POZI PAN SEMS SCREW	
36	219041	No8 X 3/4 INCH LONG POZI PAN SCREW	
37	227019	CABLE HOOK	
38	220564	TERMINAL BLOCK MOULDING (2 INSERTS)	
39	219107	No6 X 5/8 INCH LONG POZI PAN PLASTITE SCREW	
40	219101	No8 X 1/2 INCH LONG POZI PAN PLASTITE SCREW	
41	236033	10.0M X 1.00MM X 2 CORE CABLE (UK PLUG)	
	236034	10.0M X 1.00MM X 2 CORE CABLE (EURO PLUG)	
	236036	10.0M X 1.00MM X 2 CORE CABLE (RSA PLUG)	
	236049	10MT X 2 CORE X 1.5MM CABLE PLUS 16AMP INDUSTRIAL PLUG	
	236047	10.0M X .75MM X 2 CORE CABLE + SWISS PLUG	
	236043	10.0M X 18AWG X 3 CORE YELLOW CABLE (CSA PLUG)	
42	227926	AIR SEPERATOR	
43	206573	SWITCH COVER (PLUG HANDLE)	

Numatic International Spare Parts

Model No: WV370-2 / WV380-2 EXPLODED DRAWING

234301
DRAWING: EXP-0732 ISS:A06
07/03/2011

NB: FOR WIRING SEE DRAWING: WD-0239



Numatic International Spare Parts

Model No: WV370-2 / WV380-2 EXPLODED DRAWING

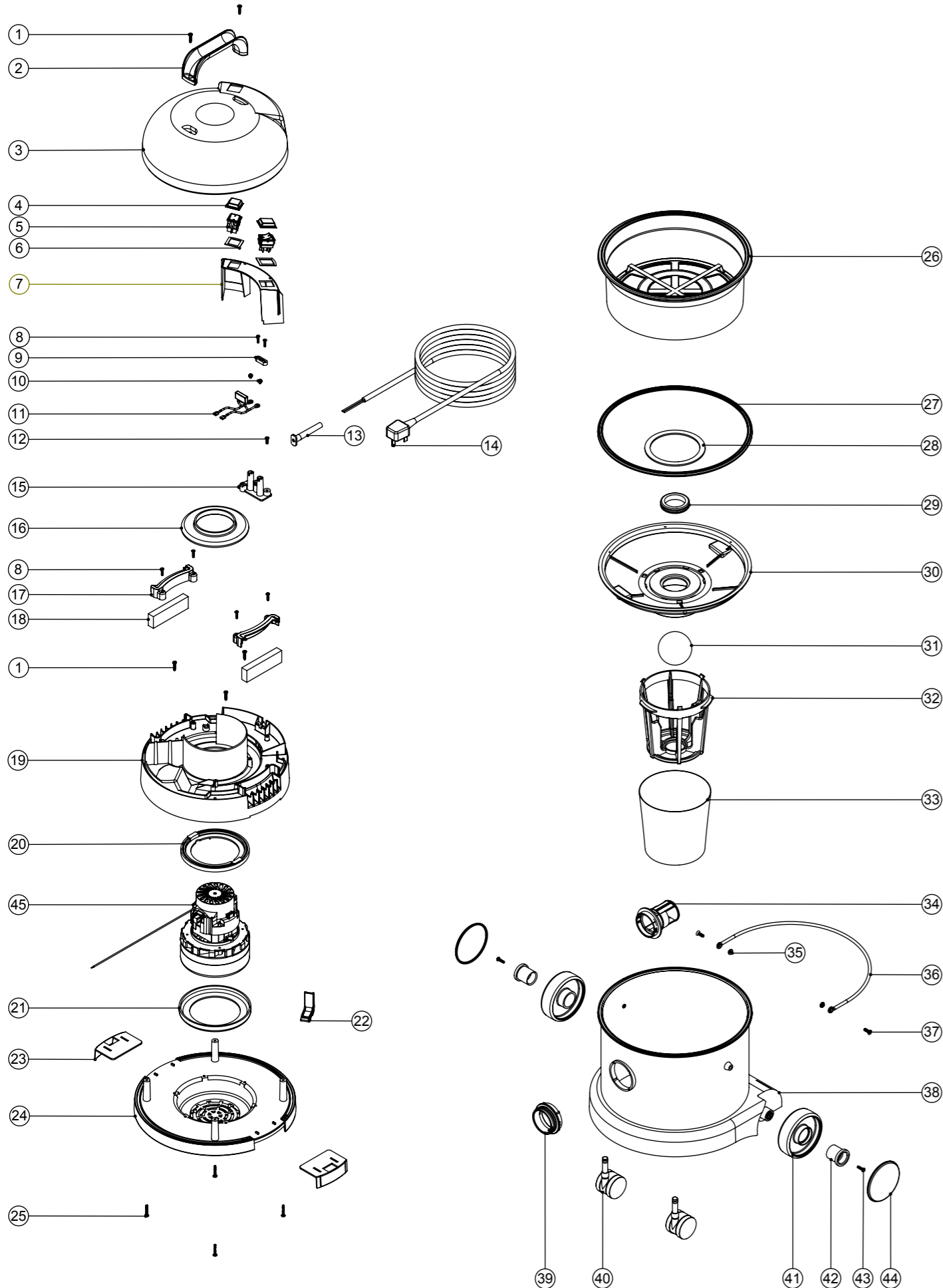
POS	ITEM NO:	DESCRIPTION	COMMENTS
1	219041	No8 X 3/4 INCH LONG POZI PAN SCREW	
2	206451	HANDLE	
3	325702	CVC COVER (1 SWITCH) PRINTED NUMATIC WORLD LOGO (WHITE)	
4	206573	SWITCH COVER (PLUG HANDLE)	
5	220843	BLUE ROCKER SWITCH	
6	291015	SWITCH GASKET - WV/CT	
7	227927	SWITCH MOUNTING BRACKET	
8	219107	No6 X 5/8 INCH LONG POZI PAN PLASTITE SCREW	
9	227008	BLACK CABLE CLAMP	
10	219090	M4 X 8MM LONG POZI PAN SEMS SCREW	
11	220698	SUPPRESSOR ASSEMBLY	
12	219101	No8 X 1/2 INCH LONG POZI PAN PLASTITE SCREW	
13	220923	STRESS RELIEF	
14	236033	10.0M X 1.00MM X 2 CORE CABLE (UK PLUG)	
	236034	10.0M X 1.00MM X 2 CORE CABLE (EURO PLUG)	
	236047	10.0M X 1.00MM X 2 CORE CABLE (SWISS PLUG)	
	236036	10.0M X 1.00MM X 2 CORE CABLE (SOUTH AFRICAN PLUG)	
	236044	10.0M X 1.00MM X 2 CORE CABLE (AUSTRALIAN PLUG)	
	236049	10.0M X 1.50MM X 2 CORE CABLE (INDUSTRIAL PLUG)	
	236043	10.0M X 18AWG X 3 CORE YELLOW CABLE (CSA PLUG)	CSA MACHINES
15	220472	TERMINAL BLOCK MOULD + INSERTS	
16	227926	AIR SEPERATOR	
17	237184	SPLASH PAD RETAINER - WV/CT	
18	291014	SPLASH PAD - WV/CT	
19	325513	TOP MOTOR HOUSING (PRINTED WHITE CHARLES) (LAMB MOTOR)	
20	227925	TOP MOTOR GASKET	
21	205443	240V 2 STAGE D.I BYPASS ACUSTEK MOTOR (BL21104T)(MARKED 230V) TCO	
	205442	220V 2 STAGE D.I BYPASS ACUSTEK MOTOR (BL21102T)(MARKED 230V) TCO	
	205441	120V 2 STAGE D.I BYPASS ACUSTEK MOTOR (BL21101T) TCO	
22	202031	BOTTOM MOTOR GASKET	
23	227019	CABLE HOOK	
24	227115	TOGGLE	
25	227921	BOTTOM MOTOR HOUSING	
26	219369	No8 X 1 INCH LONG POZI PAN STAINLESS STEEL PLASTITE SCREW	
27	207109	12 INCH FILTER (DOUBLE BOTTOM) 160GRM SMS	
28	207011	FLOAT CAGE GASKET	
29	225083	FLOAT ASSEMBLY GASKET	
30	220235	FLOAT GROMMET	
31	229635	FLOAT CAGE SUPPORT	
32	206026	POLYPROP BALL	
33	225086	FLOAT CAGE	
34	207055	GAUZE FILTER	
35	206493	WET DRY CONNECTOR	
36	208026	BUCKET HANDLE SPACER	
37	403039	BUCKET HANDLE	
38	219282	M5 X 16MM LONG POZI PAN COUNTERSUNK SCREW	
39	325417	370 NUPRO BLUE DRUM ASSEMBLY + FACE (SPARE PART)	
	325431	370 RED DRUM ASSEMBLY + FACE (SPARE PART)	
	325432	370 GREEN DRUM ASSEMBLY + FACE (SPARE PART)	
	325433	370 YELLOW DRUM ASSEMBLY + FACE (SPARE PART)	
40	227397	BLUE THREADED NECK	
	227396	RED THREADED NECK	
	227398	GREEN THREADED NECK	
	227399	YELLOW THREADED NECK	
41	204111	50MM TWIN WHEEL CASTOR WITH PU TYRE	
42	227640	2 SHOT WHEEL ASSEMBLY	
43	227868	WHEEL HUB FOR 2 SHOT WHEEL	
44	219105	No8 X 5/8 INCH LONG POZI PAN PLASTITE SCREW	
45	227688	BLUE TRIM	
	227687	RED TRIM	
	227689	GREEN TRIM	
	227690	YELLOW TRIM	

Numatic International Spare Parts

Model No: WV370-2 / WV380-2 EXPLODED DRAWING

234301
DRAWING: EXP-0732 ISS:A07
01/05/2012

NB: FOR WIRING SEE DRAWING: WD-0239



Numatic International Spare Parts

Model No: WV370-2 / WV380-2 EXPLODED DRAWING

POS	ITEM NO:	DESCRIPTION	COMMENTS
1	219041	No8 X 3/4 INCH LONG POZI PAN SCREW	
2	206451	HANDLE	
3	325702	CVC COVER (1 SWITCH) PRINTED NUMATIC WORLD LOGO (WHITE)	
4	206573	SWITCH COVER (PLUG HANDLE)	
5	220843	BLUE ROCKER SWITCH	
6	291015	SWITCH GASKET - WV/CT	
7	227927	SWITCH MOUNTING BRACKET	
8	219107	No6 X 5/8 INCH LONG POZI PAN PLASTITE SCREW	
9	227008	BLACK CABLE CLAMP	
10	219090	M4 X 8MM LONG POZI PAN SEMS SCREW	
11	220698	SUPPRESSOR ASSEMBLY	
12	219101	No8 X 1/2 INCH LONG POZI PAN PLASTITE SCREW	
13	220923	STRESS RELIEF	
14	236033	10.0M X 1.00MM X 2 CORE CABLE (UK PLUG)	
	236034	10.0M X 1.00MM X 2 CORE CABLE (EURO PLUG)	
	236047	10.0M X 1.00MM X 2 CORE CABLE (SWISS PLUG)	
	236036	10.0M X 1.00MM X 2 CORE CABLE (SOUTH AFRICAN PLUG)	
	236044	10.0M X 1.00MM X 2 CORE CABLE (AUSTRALIAN PLUG)	
	236049	10.0M X 1.50MM X 2 CORE CABLE (INDUSTRIAL PLUG)	
	236043	10.0M X 18AWG X 3 CORE YELLOW CABLE (CSA PLUG)	CSA MACHINES
15	220472	TERMINAL BLOCK MOULD + INSERTS	
16	227926	AIR SEPERATOR	
17	237184	SPLASH PAD RETAINER - WV/CT	
18	291014	SPLASH PAD - WV/CT	
19	325513	TOP MOTOR HOUSING (PRINTED WHITE CHARLES) (LAMB MOTOR)	
20	227925	TOP MOTOR GASKET	
	205442	220V 2 STAGE D.I BYPASS ACUSTEK MOTOR (BL21102T)(MARKED 230V) TCO	
	205441	120V 2 STAGE D.I BYPASS ACUSTEK MOTOR (BL21101T) TCO	
21	202031	BOTTOM MOTOR GASKET	
22	227019	CABLE HOOK	
23	227115	TOGGLE	
24	227921	BOTTOM MOTOR HOUSING	
25	219369	No8 X 1 INCH LONG POZI PAN STAINLESS STEEL PLASTITE SCREW	
26	207109	12 INCH FILTER (DOUBLE BOTTOM) 160GRM SMS	
27	207011	FLOAT CAGE GASKET	
28	225083	FLOAT ASSEMBLY GASKET	
29	220235	FLOAT GROMMET	
30	229635	FLOAT CAGE SUPPORT	
31	206026	POLYPROP BALL	
32	225086	FLOAT CAGE	
33	207055	GAUZE FILTER	
34	206493	WET DRY CONNECTOR	
35	208026	BUCKET HANDLE SPACER	
36	403039	BUCKET HANDLE	
37	219282	M5 X 16MM LONG POZI PAN COUNTERSUNK SCREW	
38	325417	370 NUPRO BLUE DRUM ASSEMBLY + FACE (SPARE PART)	
	325431	370 RED DRUM ASSEMBLY + FACE (SPARE PART)	
	325432	370 GREEN DRUM ASSEMBLY + FACE (SPARE PART)	
	325433	370 YELLOW DRUM ASSEMBLY + FACE (SPARE PART)	
39	227397	BLUE THREADED NECK	
	227396	RED THREADED NECK	
	227398	GREEN THREADED NECK	
	227399	YELLOW THREADED NECK	
40	204111	50MM TWIN WHEEL CASTOR WITH PU TYRE	
41	227640	2 SHOT WHEEL ASSEMBLY	
42	227868	WHEEL HUB FOR 2 SHOT WHEEL	
43	219105	No8 X 5/8 INCH LONG POZI PAN PLASTITE SCREW	
44	227688	BLUE TRIM	
	227687	RED TRIM	
	227689	GREEN TRIM	
	227690	YELLOW TRIM	
45	205441	BL21101T 120V LAMB BYPASS	1

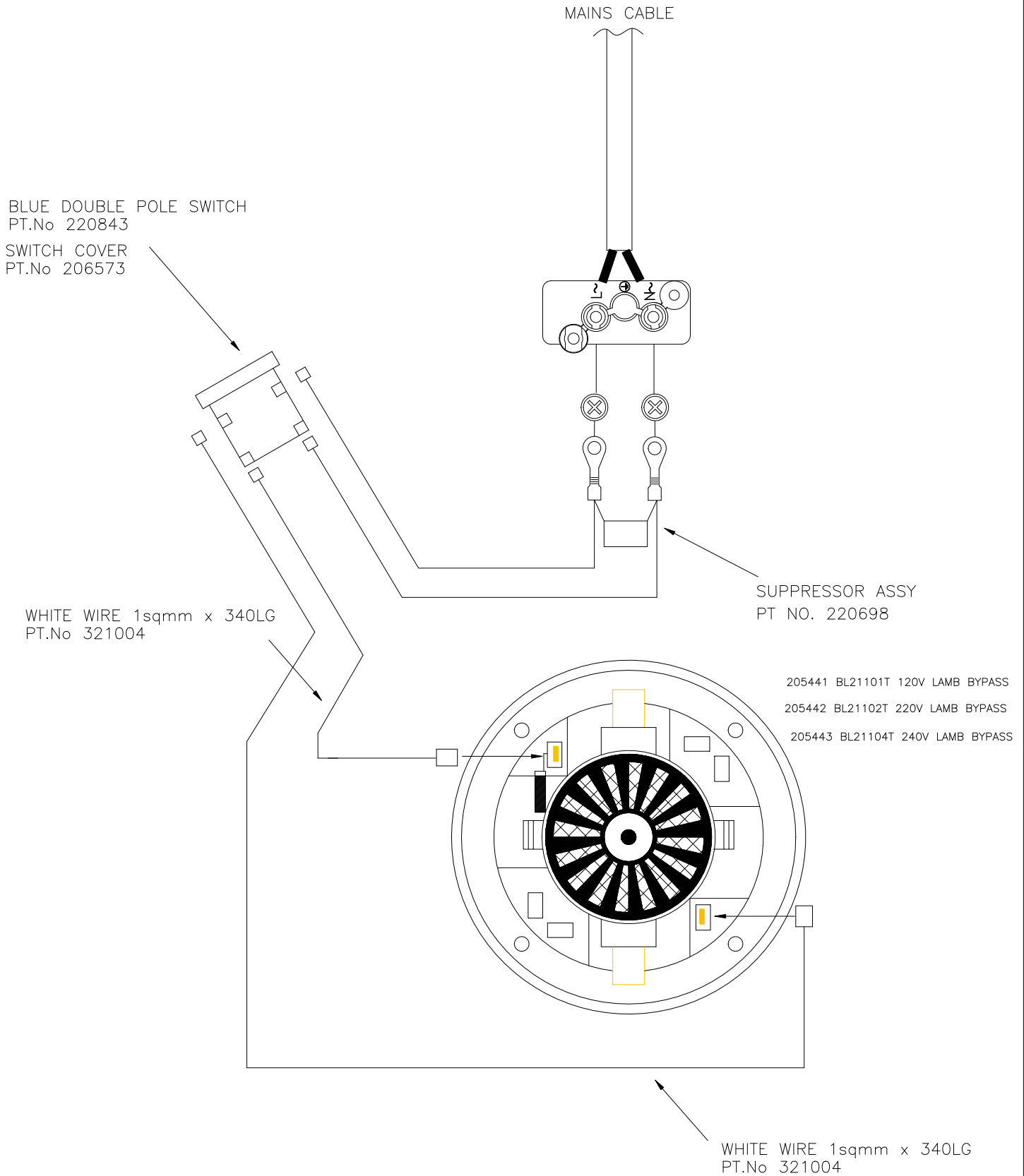
WIRING DIAGRAM

COMP. No
123218

DRG. No
WD-0239

12" PLASTIC WV/CVC LAMB MOTOR

ISSUE	REVISION	DRAWN	APPD.	DATE
A03	TCO MOTOR LEAD REPLACED BY 340MM 321004 MOTOR LEAD	MCF	MJC	22:03:13



WIRING DIAGRAM

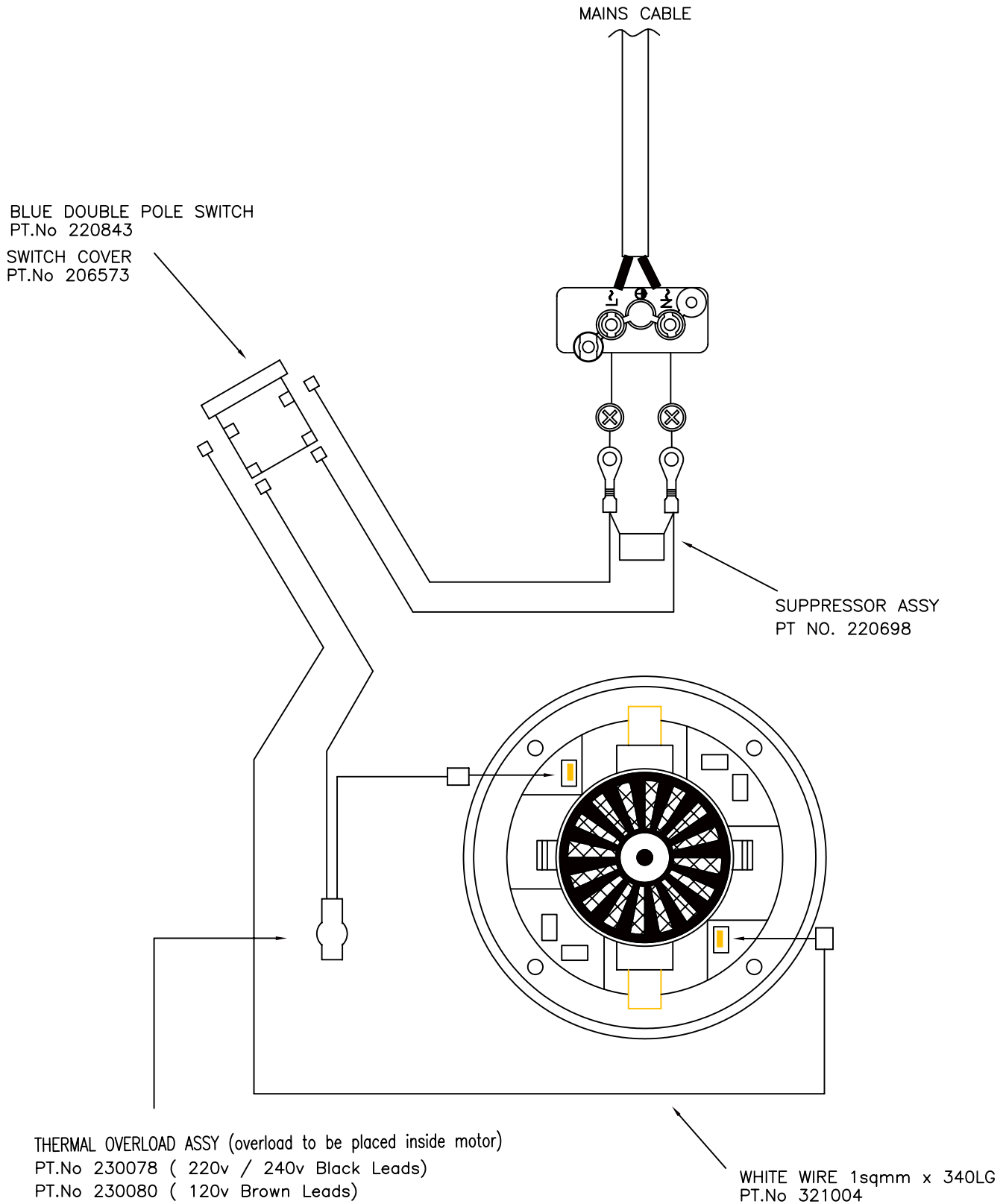
COMP. No

DRG. No

WD-0239

12" PLASTIC WV/CVC LAMB MOTOR

ISSUE	REVISION	DRAWN	APPD.	DATE
A01	NEW DRAWING	JSW	AJB	17:06:04



WIRING DIAGRAM

COMP. No

DRG. No

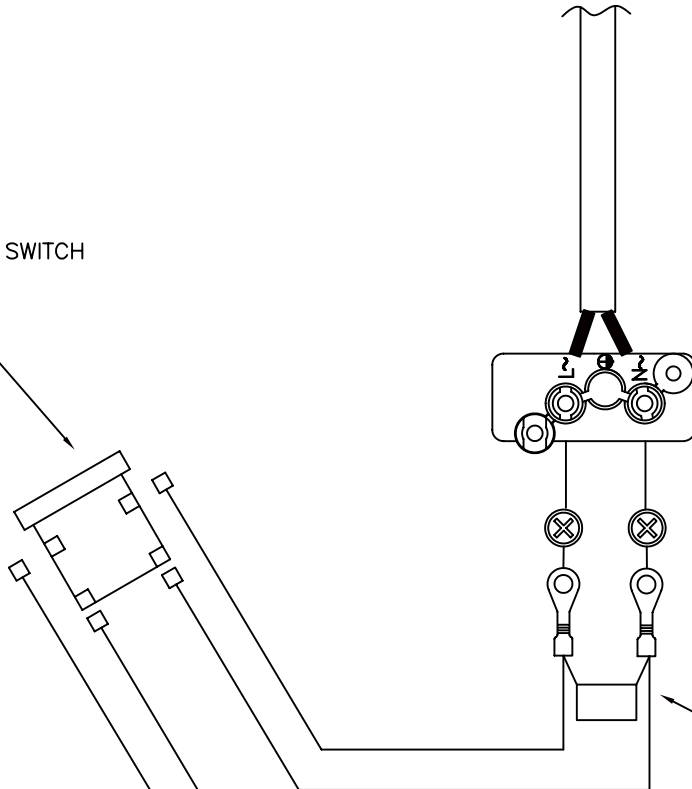
WD-0239

12" PLASTIC WV/CVC LAMB MOTOR

ISSUE	REVISION	DRAWN	APPD.	DATE
A02	230078. 230080 THERMAL OVERLOAD REMOVED	MCF	AJB	12:09:06

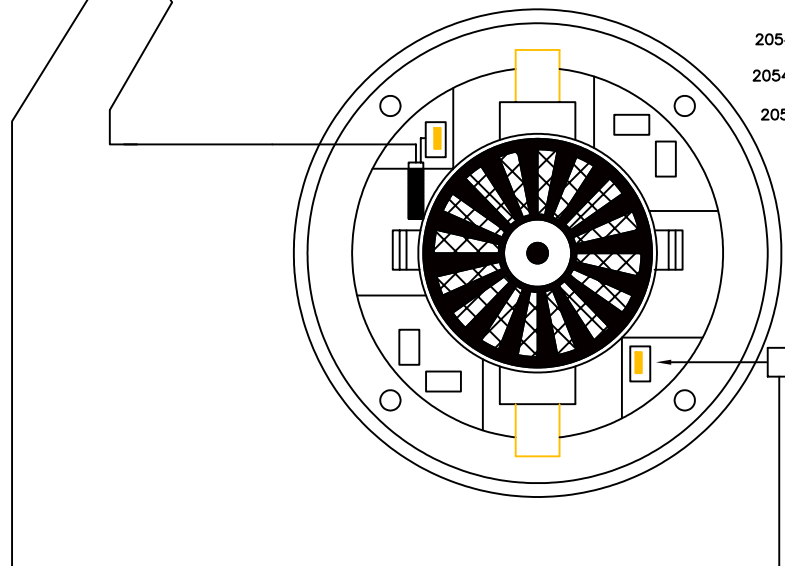
BLUE DOUBLE POLE SWITCH
PT.No 220843
SWITCH COVER
PT.No 206573

MAINS CABLE



SUPPRESSOR ASSY
PT NO. 220698

- 205441 BL21101T 120V LAMB BYPASS
- 205442 BL21102T 220V LAMB BYPASS
- 205443 BL21104T 240V LAMB BYPASS



WHITE WIRE 1sqmm x 340LG
PT.No 321004