



USER MANUAL

SMARTKIT



READ CAREFULLY BEFORE USING THE DEVICE

General

The SMARTKIT device is a patented technology specifically intended for use with NaceCare TP 12, AV 18, TP 18 ABV 12 machines. It is not permitted to use the SMARTKIT device with any other machine.

SMARTKIT allows carpet Prespraying with the same machine used for carpet cleaning. Prespraying is a very important operation, since it facilitates the dirt removal from carpet fibres. It allows us to get better cleaning results and to accelerate the following cleaning operation. Furthermore, SMARTKIT allows rinsing the carpet surfaces after cleaning, which is an extremely important operation in order to remove all the sticky chemical residual, which otherwise would cause a quick carpet re-soiling.

Safety instructions (read carefully)

SMARTKIT is a non-electric device. For the safety instructions, read carefully the safety instructions of the machine on which it is installed.



PROTECT THE ENVIRONMENT

Please dispose of packaging materials and old machine components in a safe environmentally way according to your local waster disposal regulations.



Always remember to recycle.

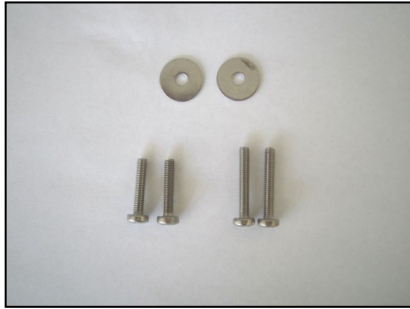
Parts provided with SMARTKIT

SMARTKIT is supplied with the following parts:

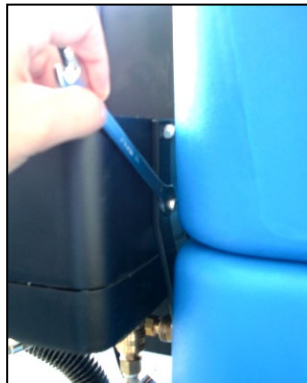
- 1 metal bracket to connect **SMARTKIT** to the machine.
- Parts to fix the bracket to the machine:
 - 2 screws TC+ INOX 4x20
 - 2 screws TC+ INOX 4x25
 - 2 washers 4X16 INOX,
- Parts to fix **SMARTKIT** on the bracket.
 - 2 screws TC 6x16
 - 2 locking nuts diam.6
- Prespray hose and gun (PRESPRAY)
- Hook for prespray hose and hook for prespray gun.

Connection to the machine body

1. Fix the bracket to the machine panel, using the 2 washers 4x16 and the 2 screws 4x20 (the longer screws 4x25 must be used only for Serena Silent or TP18 with heater HT1800. For this case, see the paragraph "Connection of **SMARTKIT** to a machine with heater". In all the other cases, shorter screws must be used).



2. Fix the body of **SMARTKIT** onto the bracket, using the 2 screws TC 6x16 and the 2 locking nuts diam.6.



3. Assemble the hooks supplied with **SMARTKIT** on the brackets situated on the machine upper tank. These hooks allow to hang the prespray hose and gun on the machine.



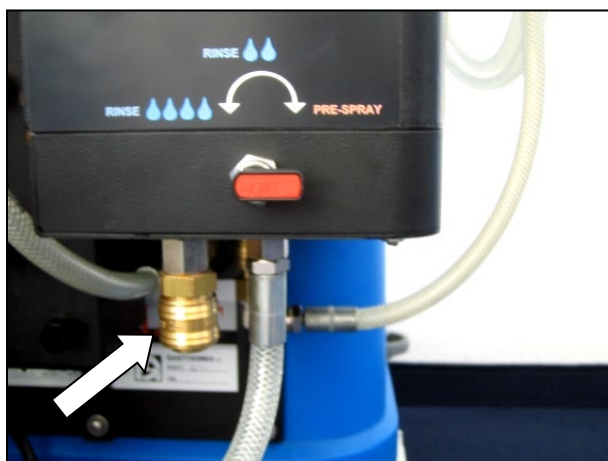
4. Connect **SMARTKIT** to the machine, inserting the male quick disconnect coupling into the female quick disconnect coupling which is situated on the machine body.



5. Connect the prespray hose to the specific exit of **SMARTKIT**



6. Connect the hose of the accessory to the specific exit of **SMARTKIT**



Connection of SMARTKIT to a machine with heater

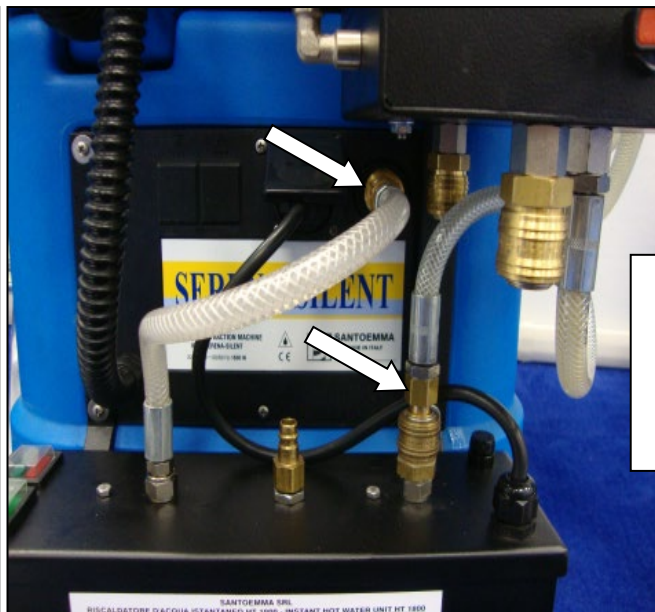
For the TP12 or TP18, the heater is assembled horizontally, using the dedicated brackets supplied with HT1800. The 2 screws 4x25, included in **SMARTKIT**, are supposed to be used to lock on the machine body both the heater's right-side bracket and the bracket of **SMARTKIT**. The bracket of SMARTKIT-EL is assembled upon the right-side bracket of the heater.

For the AV12 or AV18 with heater, the heater is assembled vertically on the machine, using the dedicated bracket supplied with HT1800.

SMARTKIT is assembled on the machine as described in the previous paragraph.

In any case, the heater HT1800 must be normally plugged with the heater input coupling into the female coupling of the machine, while the male coupling of **SMARTKIT** must be put inside the female output of the heater.

See pictures below:



TP12 or TP18
with heater and
SMARTKIT



AV12 or AV18
with heater and
SMARTKIT

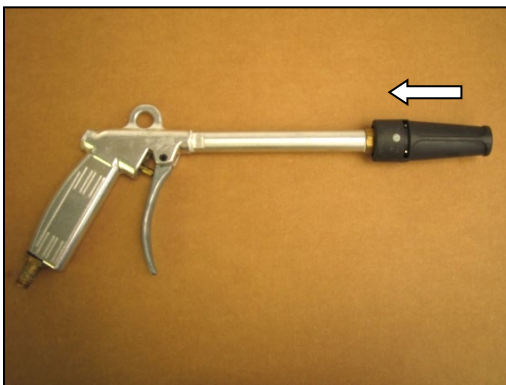
Prespray

Rotate the red lever towards RIGHT. In this position, it is possible to spray water and chemical, through the outlet located at the front outlet of SMARTKIT (see picture), where the prespray hose is connected.

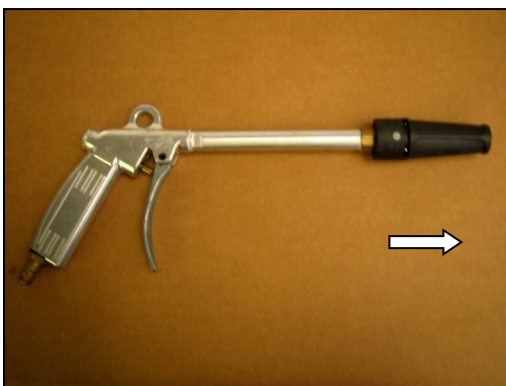


In this position, the concentration of the chemical solution is about 10%.

Pull back the nozzle on the prespray gun, in order to spray the chemical solution at a correct pressure.



If the prespray hose is empty (for example the first time the machine is used), it is necessary to wait some time before all the air goes out from the hose. To reduce this time, it is possible to push forward the nozzle, in order to quickly drain the hose from the air.



After that, pull back the nozzle again.

While prespraying, slightly rotate the nozzle to tune the spray angle.



Cleaning with water and chemical

After prespraying, in most situations it is not necessary to clean with further chemical, but it is enough to clean with clean water only, using either the manual accessory or the cleaning unit located below the machine (for the models AV12, AV18, AVB12). In this way, cleaning and rinsing are performed in the same time.

However, it is also possible to clean with water and chemical, connecting the hose of the manual accessory or the hose of the spraybar, to the front outlet of SMARTKIT, instead of the prespray hose (see picture below)

With different accessories, the chemical concentration may slightly change to have a correct chemical concentration.



Rinsing

In order to rinse carpet, rotate the red lever towards LEFT if you want to have the maximum waterflow (deep-cleaning) or UP for a reduced waterflow (maintenance cleaning).

Deep-cleaning is indicated for very dirty carpets, while for less dirty carpets it is possible to proceed with a maintenance cleaning.



Maintenance of SMARTKIT

Periodically clean the chemical filter.

If in the time SMARTKIT does not pick up chemical, it is then necessary to clean the dosing contained in the chemical hose.

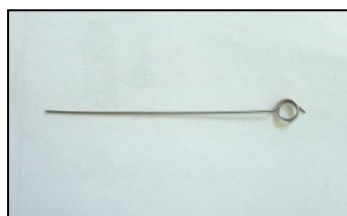
8020946 chemical cap – this goes on the clear hose from the smart kit and threads on to the chemical jug

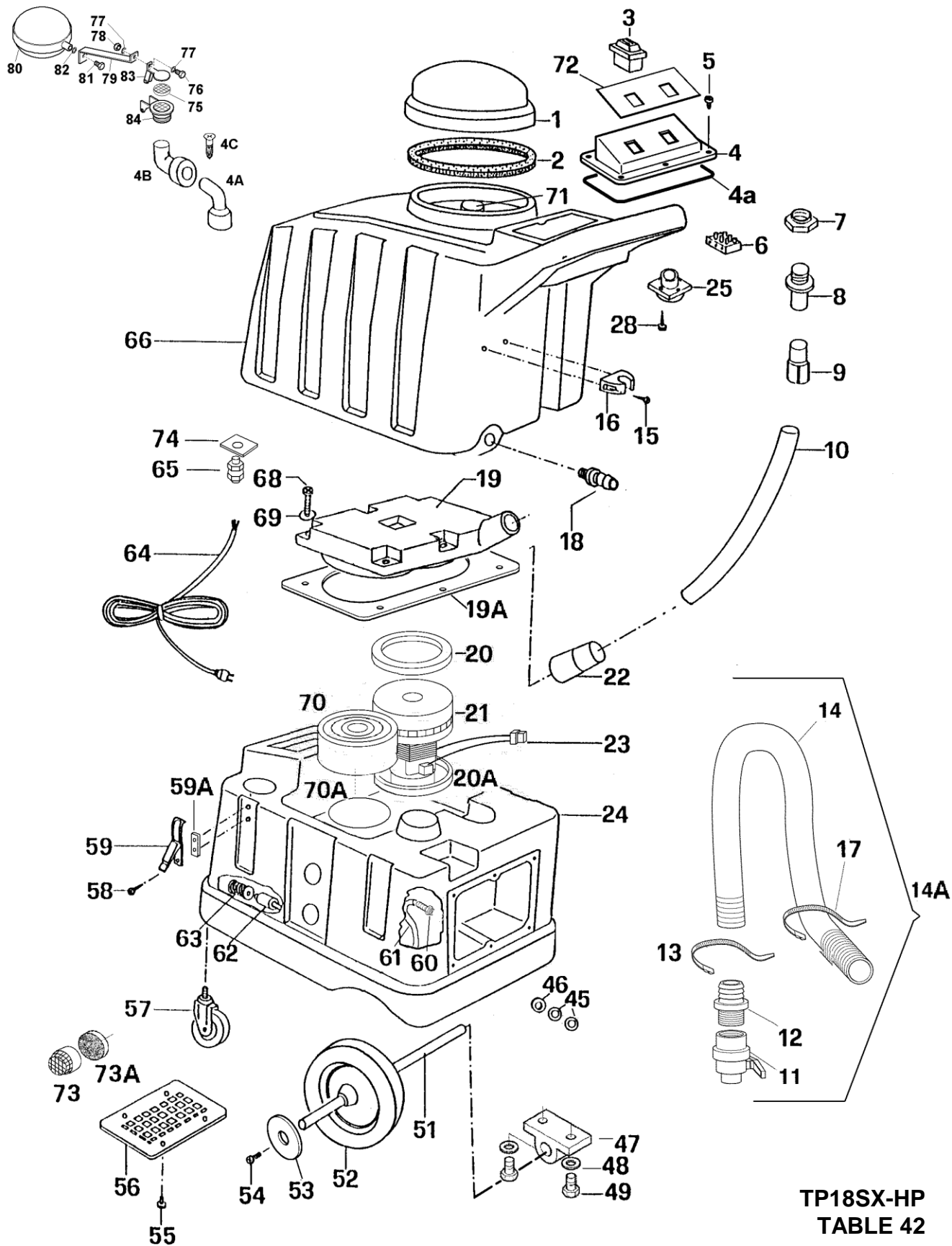


8020947 dema tube – this goes inside the chemical jug tightly



If this is not enough, it is necessary to clean the device sucking the chemical, inside **SMARTKIT**. This operation can be done using the specific pin located inside the lower part of SMARTKIT-EL





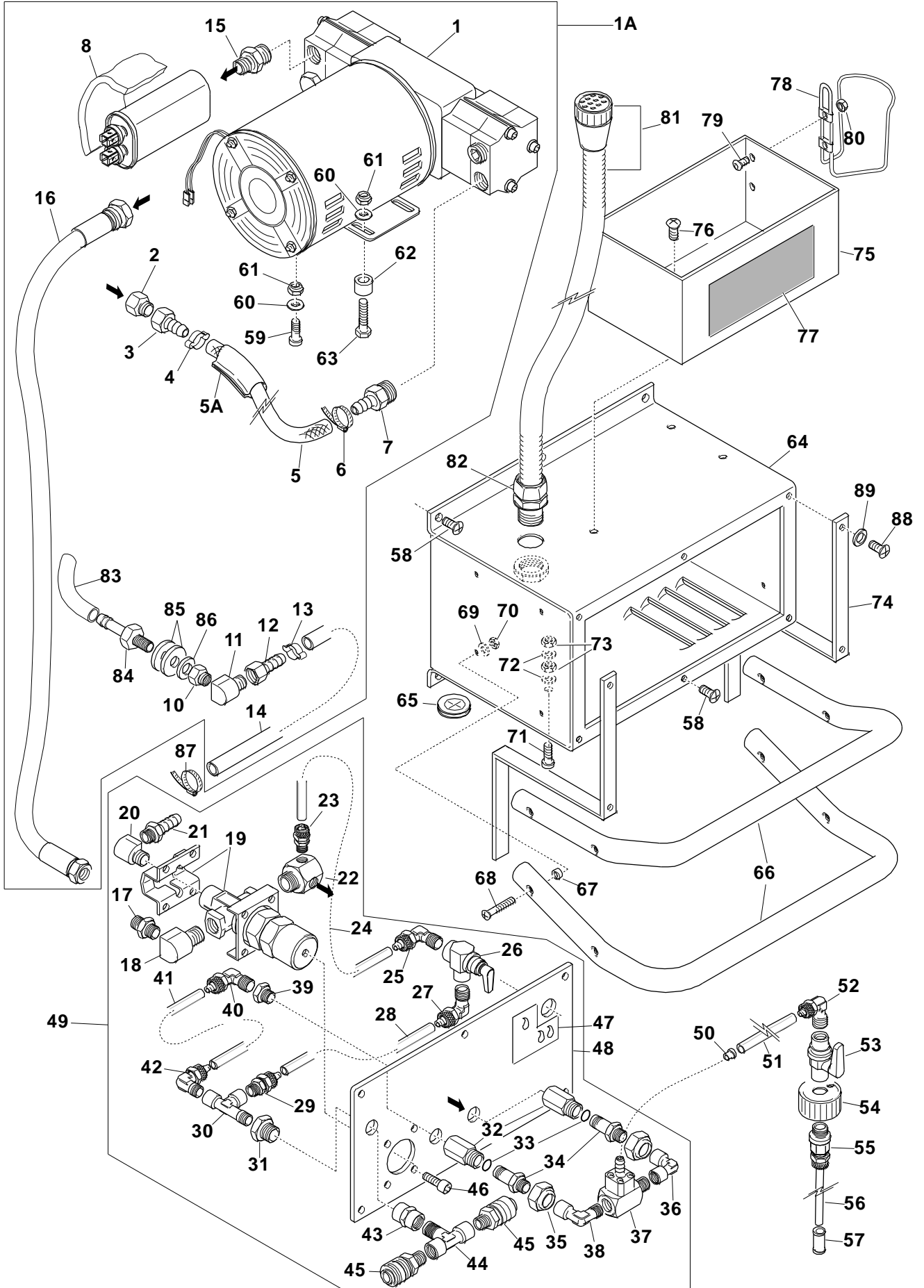
**TP18SX-HP
TABLE 42**

**September
2007**

REF	PART NUMBER	DESCRIPTION
1	15178	COVER
	15178C	COVER WITH GASKET
2	15179	GASKET
3	15217	2 POSITIONS SWITCH
4	15189	PANEL (2 SWITCHES)
4A	15128	GASKET FOR UPPER PANEL
5	15551	STAINLESS STEEL SCREW TC+ 4X16
6	152361	CONNECTING TERMINAL
7	15548	RING NUT
8	15365	HOSE NIPPLE
9	15334	CUFF D. 38
10	15364	VACUUM HOSE D. 38
11	151592	DRAIN VALVE 1" 1/4
12	151612	HOSE NIPPLE 1" 1/4 D.38
13	156094	TIE WITH SCREW FOR D.38 PIPE (32-50)
14	153582	REINFORCED DRAIN HOSE D.38 – L=90CM
14A	15358C-HP	COMPLETE DRAIN HOSE : CODICI 1592+1612+3582+2X6094
15	15544	SCREW 4,2X22
16	151602	SPECIAL CLIP FOR DIAM. 38 HOSE
17	15541	TIE
18	151612	HOSE NIPPLE 1" 1/4 D.38
19	15155N2	MANIFOLD
19A	151551	MANIFOLD GASKET
20	15825	MOTOR GASKET 3MM
20A	15825	MOTOR GASKET 3MM
21	15809PA	MOTOR 1400W HIGH WATERLIFT 120V 50/60 HZ
22	15363	CUFF
23	15234	PLASTIC CONNECTOR
	15250	MALE FASTON – 6,3MM
24	15152AZ	BLUE LOWER TANK
25	152592C	SOCKET WITH WIRES
28	15538	SCREW TC+ 3,9X13
45	15540	BRASS WASHER
46	15147	NEOPRENE WASHER
47	15419N	SUPPORT FOR WHEELS SHAFT
48	15594	WASHER 8X24X2 ZN
49	15583	SCREW TE 8X20
50	15419	PILLOW BLOCK
51	15418	SHAFT
52	15422	WHEEL
53	155632	WASHER 6X30X2 ZN
54	15582	SCREW TE 6X8
55	15536	STAINLESS STEEL SCREW TC+ 4X10
56	15180	LOWER PANEL
57	15115.1	WHEEL DIAM.100
58	15545	SCREW

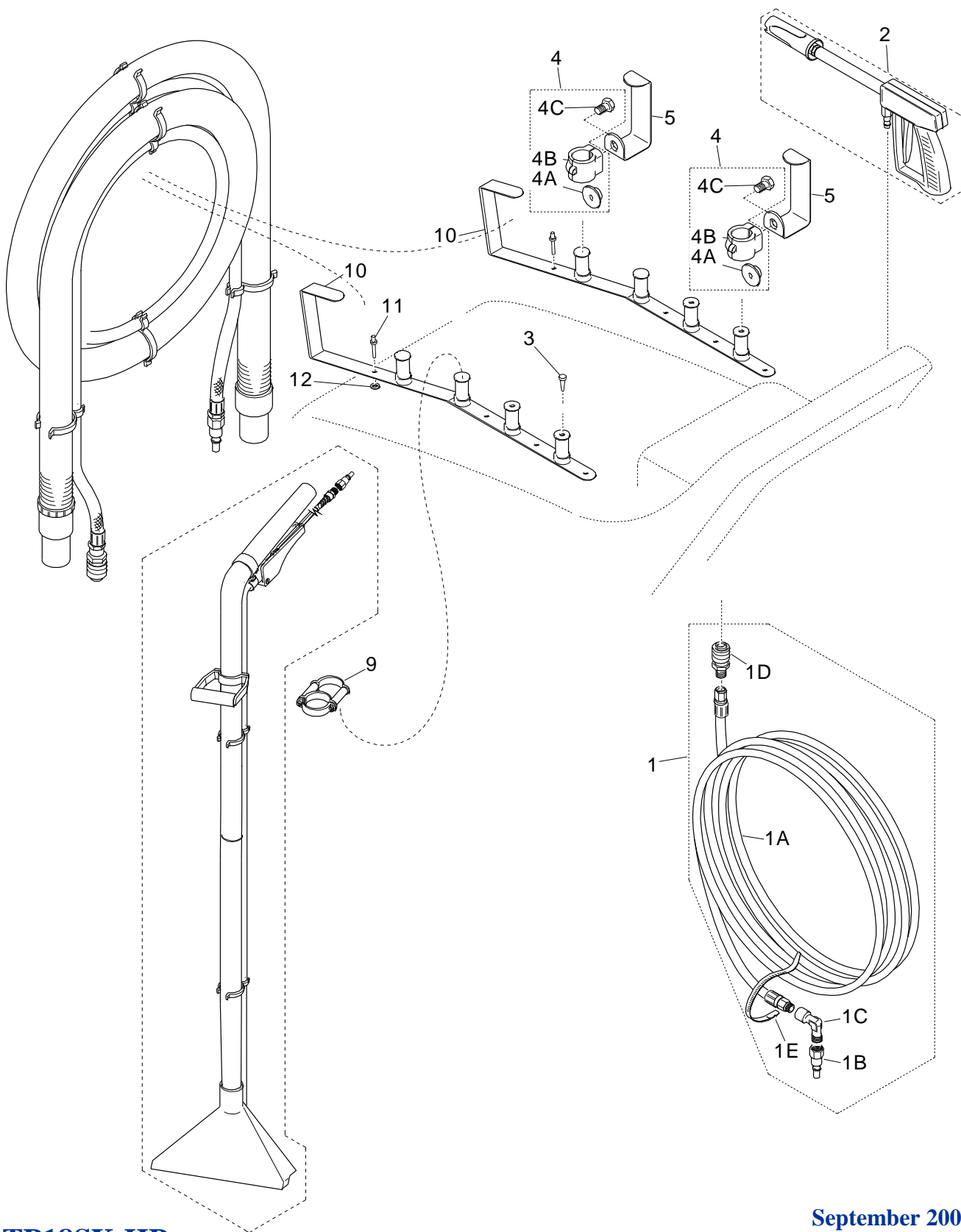
REF	PART NUMBER	DESCRIPTION
59	15142	COUPLER
59A	15167	PLATE
60	15702D	HOSE NIPPLE
61	15745	EXTRAFLEX PIPE 67CM
62	15747	BALLAST
63	15608	FILTER
64	15215	CABLE 3XAWG14 L.15M. SJT-CSA USA PLUG
65	15295	FAIRLEAD WITH NUT
66	15151AZ	BLUE UPPER TANK
67	15131	ELBOW
68	15560	SCREW STAINLESS STEEL TC+ 5X30
69	15517I	STAINLESS STEEL WASHER 5X15
70	15203	SOUNDPROOFING STRIPE
70 A	151411	DISC DIAM. 150MM
71	15183	ELBOW
72	151814-NORTH	UPPER LABEL FOR TP18SX-HP
73	1511638	PLASTIC FILTER
73A	152025	FILTER PPI30 D.44
74	15109	FAIRLEAD PLATE
75	15188	VACUUM FILTER

TP18SX-HP



REF	Part Number	Description
1	15645400.1	PUMPTEC PUMP 400 PSI (PUMP HEAD ONLY)
1A	15645400	PUMPTEC PUMP 120V 400 PSI + Motor
2	157671	COUPLING A4/Z F.1/8 – M. 1/4
3	156991	HOSE NIPPLE F. 1/4 DIAM.8
4	15609	TIE
5	1534304	RAGNO PIPE 8x14 L=365mm
5A	152852	SYLICON INSULATION
6	156092	TIE WITH SCREW
7	156996	HOSE NIPPLE M.3/8 DIAM.9
8	151841	RUBBER PROTECTION D.35x53 L=100mm
10	157671	COUPLING A4/Z F.1/8 – M. 1/4
11	1562614-NPT	ELBOW COUPLING MF 1/4-1/4 NPT
12	156991	HOSE NIPPLE DIAM. 8, ATT. F.1/4"
13	15609	TIE
14	1534308	RAGNO PIPE 8x14 L=480mm
15	1573821	NIPPLE 3/8 NPT – 1/4GAS CILINDR.
16	1534309C	HIGH PRESSURE PIPE L450mm F1/4-F1/4 GAS-OTT.
17	15764	COUPLING A1 1/4-1/4
18	1562614-NPT	ELOBOW MF NPT-NPT 1/4 1/4
19	15647400	BY PASS PUMPTECC 400 + BRACKET
20	1562614-NPT	ELOBOW MF NPT-NPT 1/4 1/4
21	156994	HOSE NIPPLE M. 1/4 DIAM.9
22	1562614T-NPT	SPECIAL COUPLING – 3WAYS ELBOW MFF 1/4NPT
23	15616	COUPLING C1 8/6-1/8
24	1574001	RILSAN HOSE H.R. 6/8 L=160mm
25	15605	ELBOW COUPLING C5 M.1/8 FOR 6/8 PIPE
26	156172	PANEL ON-OFF VALVE 90° 1/8
27	15605	ELBOW COUPLING C5 M.1/8 FOR 6/8 PIPE
28	1574003	RILSAN HOSE H.R. 6/8 L=150mm
29	15616	COUPLING C1 8/6-1/8
30	1572232	COUPLING T FFM A13 1/8
31	157671	COUPLING A4/Z M.1/4 - F.1/8
32	15714N-HP	COUPLING F ¼ FOR INJECTOR CONECTION
33	151373	O-RING FOR 714N
34	15698	AUTOMATIC COUPLING M.ATT.M. R6 8-1/8
35	15761	NUT 3/8" WITH HOLE DIAM. 14mm
36	1562615	ELBOW COUPLING FF 1/8"
37	1590452	DEMA INJECTOR FF 1/8
	1590453-03	INTERNAL BUSHING 0,3
38	15626	ELBOW COUPLING MF A10 1/8-1/8
39	157671	COUPLING A4/Z M.1/4 - F.1/8
40	15605	ELBOW COUPLING C5 M.1/8 FOR 6/8 PIPE
41	1574002	RILSAN HOSE H.R. 6/8 L=120mm
42	15605	ELBOW COUPLING C5 M.1/8 FOR 6/8 PIPE
43	1576214	COUPLING FF A3 1/4
44	1572251	COUPLING T FMF 1/4 A12

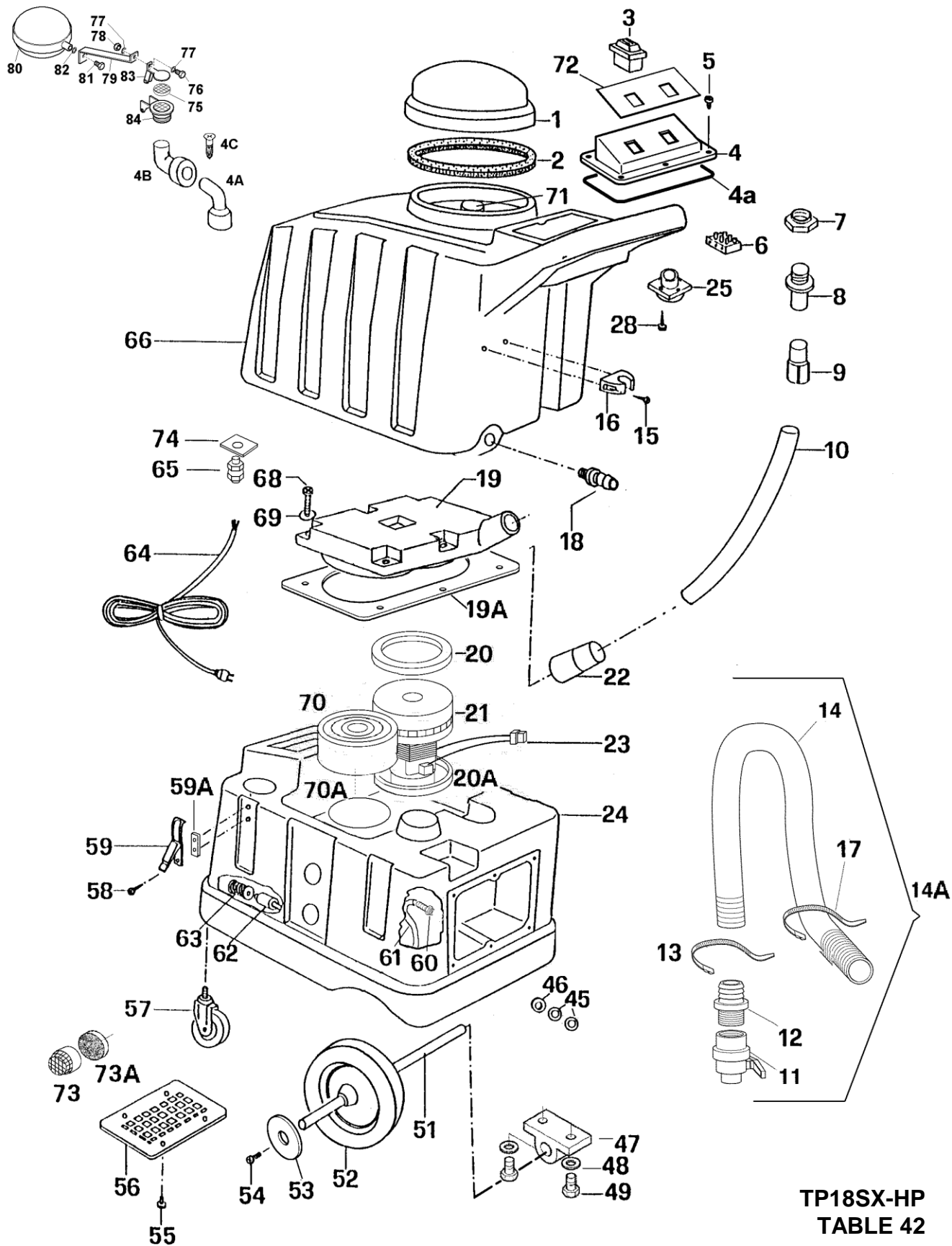
REF	Part Number	Description
45	15687-T	QUICK DISCONNECT FEMALE, ATT. M. 1/4
46	15574	SCREW TC BRUGOLA 6x14
47	1515731	POWERTEC LABEL - 2 DROPS
48	1549122N	REGULATION PANEL FOR GRACEHP 400 PSI
49	N/A	COMPLETE PANEL FOR GRACEHP
50	N/A	RED TIP PER SMARTKIT
51	1573518	EXTRAFLEX PIPE 6/8 L=60cm
52	N/A	
53	N/A	
54	8020946	Cap with 90 degree barb for Just for Carpets
55	N/A	COUPING C1 8/6-1/8
56	N/A	
57	N/A	
58	15536	SCREW TC+ 4x10 INOX
59	15574	SCREW TC BRUGOLA 6x14
60	155631	WASHER 6x12x1,5 Zn
61	15562A	LOCKING NUT DIAM. 6 mm
62	1534303	RAGNO PIPE 6x14 H=12 mm
63	1558230	SCREW TE 6x30 Zn
64	1549132N	PANEL FOR GRACEHP PUMP WITH FIXING PLATE
65	151631	BUSH 8x14
66	154916	TUBE HOLDER
67	155174	WASHER 5x15x3 mm PVC
68	15560	SCREW TC+ 5x30 INOX
69	155171	WASHER 5x15x1,5 INOX
70	15525	NUT DIAM. 5 mm
71	15551	SCREW TC+ 4x16 INOX
72	155210	LOCKING WASHER DIAM. 4
73	15523	NUT DIAM.4
74	1547221	BRACKET FOR FIXING HEATER ON GRACEHP
75	154918	CONTAINER FOR CHEMICAL BOTTLE FOR GRACEHP
76	15575I	SCREW TE 5x12 INOX
77	151572	LOWER PANEL LABEL FOR GRACE HP
78	1549182	1 LITER TANK HOLDER
79	15534	SCREW TC BRUGOLA BOMBATA 5x10 Brunita
80	15525	NUT DIAM. 5
81	152611C	COMPLETE CABLE SHEAT + ELECTRICAL CONNECTOR
82	15262C	TERMINAL + NUT FOR CABLE SHEAT DIAM. 16
83	1573523	EXTRAFLEX PIPE 6/8 L=22cm
84	15702D	HOSE NIPPLE
85	15147	NEOPRENE WASHER
86	15540	BRASS WASHER
87	156092	TIE WITH SCREW FOR HOSE RAGNO 8x14 HP
88	1553620	SCREW TC+ 4x20 INOX
89	15589	WASHER 4x16 INOX



TP18SX-HP
Accessories for carpet cleaning

September 2007

REF	PART NUMBER	DESCRIPTION
1	153440C-L100-MG	REINFORCED PIPE 6x14 10m WITH ELBOW + COUPLING
1A	153440-L100-INN	REINFORCED PIPE 6x14 10m WITHOUT COUPLINGS
1B	15689-PE	QUICK DISCONNECT MALE, ATT. F.1/4
1C	1562614	COUPLING – ELBOW MF A10 1/4 – 1/4
1D	15687-PE	QUICK DISCONNECT FEMALE, ATT. M. ¼
1E	15541	TIE 265x9
2	159041CHP	SPRAYING GUN FOR GRACE HP (IN: M.1/4, OUT: F. 1/4)
	15689-PE	QUICK DISCONNECT MALE, ATT. F.1/4
	1590434	EXTENSION M1/4-M1/4
	159042-04	NOZZLE 04 WITH VARIABLE ANGLE AND BYPASS
4	159025	CLIP DIAM. 22 COMPLETE (49145+9023.1+58206)
4A	1549145	WASHER FOR LOCKING HOOK 49143
4B	159023.1	CLIP DIAM. 22 FOR HOOK SUPPORT (WITHOUT HOOK)
4C	1558206	SCREW TE 6x8 Zn
5	1549143	GRACEHP SPRAY TUBE HOOK
9	15117-HOOK	HOOK D.38 FOR NS300
10	1549141	LOWER SUPPORT FOR GRACEHP TOOLS AND HOSES
11	155191	RIVET 4x22
12	15529	STAINLESS STEEL WASHER 4x16

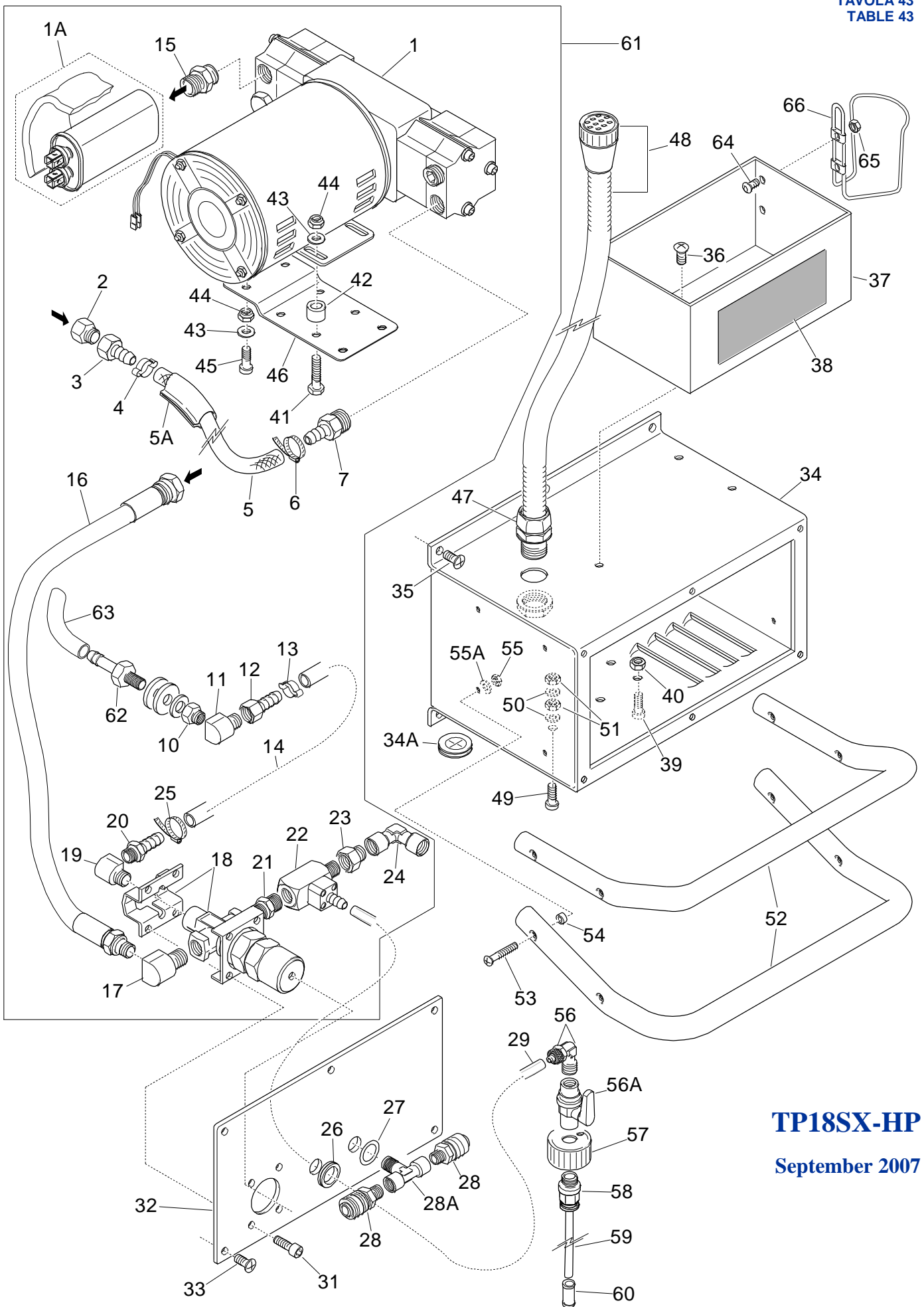


TP18SX-HP
TABLE 42

September
2007

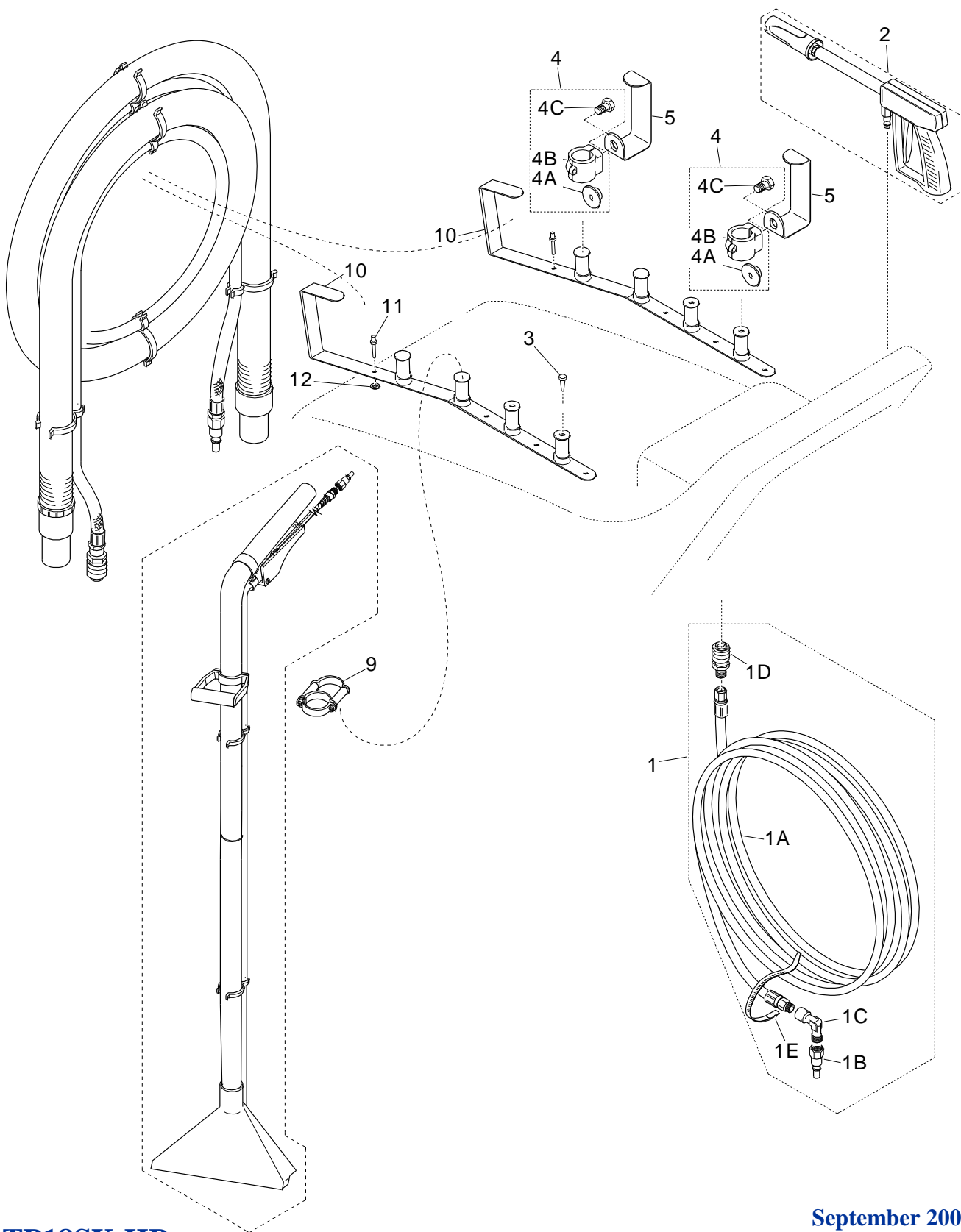
REF	PART NUMBER	DESCRIPTION
1	15178	COVER
	15178C	COVER WITH GASKET
2	15179	GASKET
3	15217	2 POSITIONS SWITCH
4	15189	PANEL (2 SWITCHES)
4A	15128	GASKET FOR UPPER PANEL
5	15551	STAINLESS STEEL SCREW TC+ 4X16
6	152361	CONNECTING TERMINAL
7	15548	RING NUT
8	15365	HOSE NIPPLE
9	15334	CUFF D. 38
10	15364	VACUUM HOSE D. 38
11	151592	DRAIN VALVE 1" 1/4
12	151612	HOSE NIPPLE 1" 1/4 D.38
13	156094	TIE WITH SCREW FOR D.38 PIPE (32-50)
14	153582	REINFORCED DRAIN HOSE D.38 – L=90CM
14A	15358C-HP	COMPLETE DRAIN HOSE : CODICI 1592+1612+3582+2X6094
15	15544	SCREW 4,2X22
16	151602	SPECIAL CLIP FOR DIAM. 38 HOSE
17	15541	TIE
18	151612	HOSE NIPPLE 1" 1/4 D.38
19	15155N2	MANIFOLD
19A	151551	MANIFOLD GASKET
20	15825	MOTOR GASKET 3MM
20A	15825	MOTOR GASKET 3MM
21	15809PA	MOTOR 1400W HIGH WATERLIFT 120V 50/60 HZ
22	15363	CUFF
23	15234	PLASTIC CONNECTOR
	15250	MALE FASTON – 6,3MM
24	15152AZ	BLUE LOWER TANK
25	152592C	SOCKET WITH WIRES
28	15538	SCREW TC+ 3,9X13
45	15540	BRASS WASHER
46	15147	NEOPRENE WASHER
47	15419N	SUPPORT FOR WHEELS SHAFT
48	15594	WASHER 8X24X2 ZN
49	15583	SCREW TE 8X20
50	15419	PILLOW BLOCK
51	15418	SHAFT
52	15422	WHEEL
53	155632	WASHER 6X30X2 ZN
54	15582	SCREW TE 6X8
55	15536	STAINLESS STEEL SCREW TC+ 4X10
56	15180	LOWER PANEL
57	15115.1	WHEEL DIAM.100
58	15545	SCREW

REF	PART NUMBER	DESCRIPTION
59	15142	COUPLER
59A	15167	PLATE
60	15702D	HOSE NIPPLE
61	15745	EXTRAFLEX PIPE 67CM
62	15747	BALLAST
63	15608	FILTER
64	15215	CABLE 3XAWG14 L.15M. SJT-CSA USA PLUG
65	15295	FAIRLEAD WITH NUT
66	15151AZ	BLUE UPPER TANK
67	15131	ELBOW
68	15560	SCREW STAINLESS STEEL TC+ 5X30
69	15517I	STAINLESS STEEL WASHER 5X15
70	15203	SOUNDPROOFING STRIPE
70 A	151411	DISC DIAM. 150MM
71	15183	ELBOW
72	151814-NORTH	UPPER LABEL FOR TP18SX-HP
73	1511638	PLASTIC FILTER
73A	152025	FILTER PPI30 D.44
74	15109	FAIRLEAD PLATE
75	15188	VACUUM FILTER



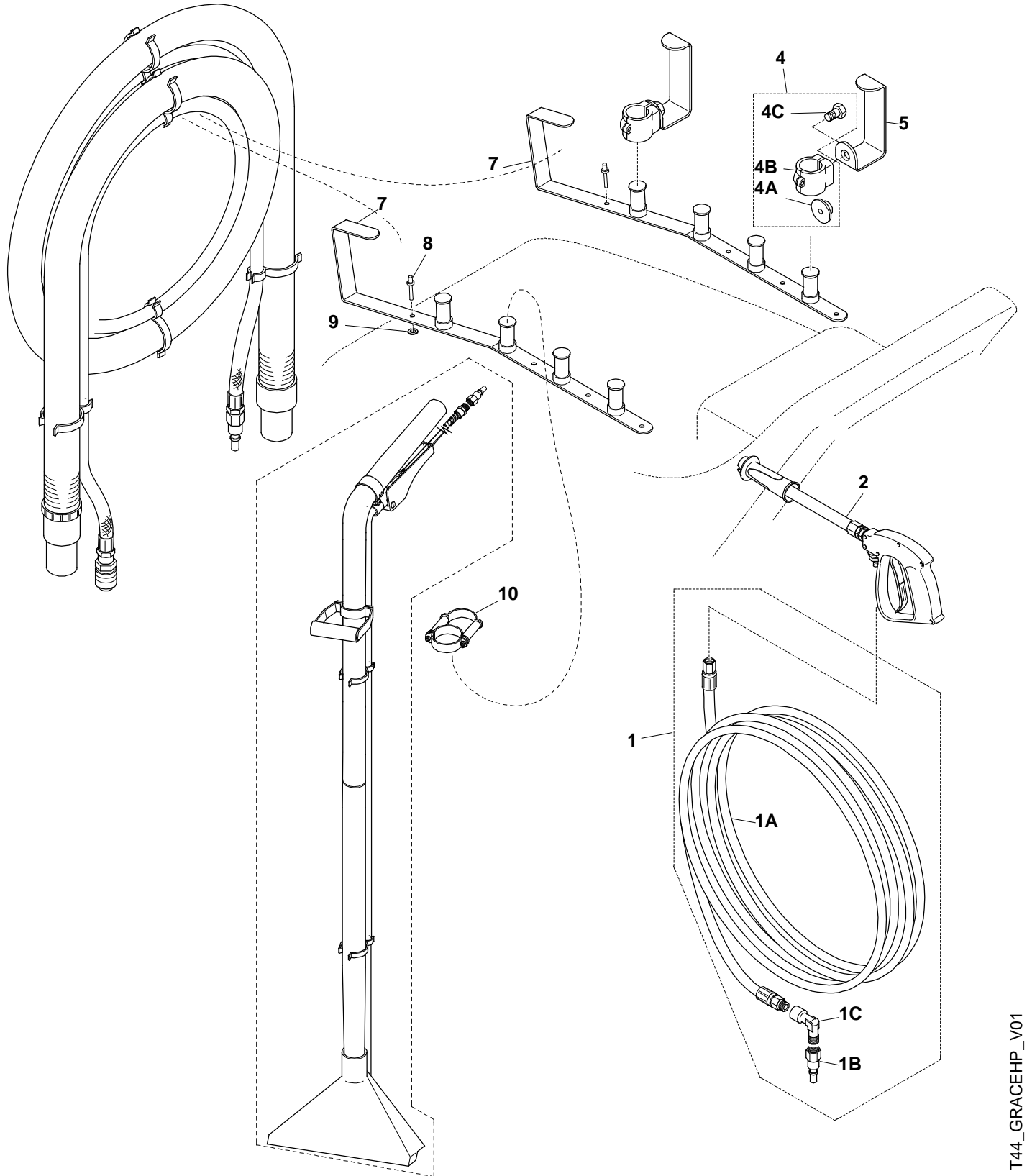
REF	PART NUMBER	
1	15645400	PUMPTEC PUMP 120V 400 PSI
	15646400	PUMPTEC PUMP 230V 400 PSI
1A	151841	RUBBER PROTECTION D.35X53 L=100MM
2	157671	COUPLING A4/Z F.1/8 – M. 1/4
3	156991	HOSE NIPPLE F. 1/4 DIAM.8
4	15609	TIE
5	1534304	RAGNO PIPE 8X14 L=365MM
5A	152852	SYLICON INSULATION
6	156092	TIE WITH SCREW
7	156996	HOSE NIPPLE M.3/8 DIAM.9
10	157671	COUPLING A4/Z F.1/8 – M. 1/4
11	1562614-NPT	ELBOW COUPLING MF 1/4-1/4 NPT
12	156991	HOSE NIPPLE DIAM. 8, ATT. F.1/4”
13	156092	TIE WITH SCREW
14	1534308	RAGNO PIPE 8X14 L=480MM
15	157382	NIPPLE 3/8 NPT – 3/8 GAS
16	1534301	HIGH PRESSURE PIPE 8X14 M1/4GAS+F3/8GAS 370MM
17	1562614-NPT	ELOBOW MF NPT-NPT 1/4 1/4
18	15647400	BY PASS PUMPTECC 400 + BRACKET
19	1562614-NPT	ELOBOW MF NPT-NPT 1/4 1/4
20	15699	HOSE NIPPLE M. 1/4 DIAM.8
21	15760-NG	HOSE NIPPLE 1/4-1/8 NPT-GAS
22	1590452	DEMA INJECTOR FF 1/8
	1590453-03	INTERNAL BUSHING 0,3
23	157671	COUPLING A4/Z M.1/4 - F.1/8
24	156262	ELBOW COUPLING FF A9 1/4 – 1/4
25	156092	TIE WITH SCREW
26	15163	PANEL BUSH
27	151631	BUSH – SMALL TYPE
28	15687-PE	QUICK DISCONNECT FEMALE, ATT. M. 1/4
28A	1572251	COUPLING – “T” FMF 1/4 A12
29	1573518	EXTRAFLEX PIPE 6/8 L=60CM
30	151631	BUSH 8X14
31	15574	SCREW TC BRUGOLA 6X14
32	1549122N	REGULATION PANEL FOR GRACEHP 400 PSI
33	15536	SCREW TC+ 4X10 INOX
34	1549132	PANEL FOR PUMP GRACEHP 400 PSI
35	15536	SCREW TC+ 4X10 INOX
36	15575I	SCREW TE 5X12 INOX
37	154918	CONTAINER FOR CHEMICAL BOTTLE FOR GRACEHP
38	151573-NORTH	LOWER PANEL LABEL FOR TP18SX-HP
39	15574	SCREW TC BRUGOLA 6X14
40	15562A	LOCKING NUT DIAM. 6 MM
41	1558230	SCREW TE 6X30 ZN
42	1534303	RAGNO PIPE 6X14 H=12 MM
43	155631	WASHER 6X12X1,5 ZN

REF	PART NUMBER	
44	15562A	LOCKING NUT DIAM. 6 MM
45	15574	SCREW TC BRUGOLA 6X14
46	1549191	SUPPORT PLATE FOR PUMPTEC PUMP 400 PSI
47	15262C	TERMINAL + NUT FOR CABLE SHEAT DIAM. 16
48	152612C	COMPLETE CABLE SHEAT 120V+ ELECTRICAL CONNECTOR
	152612C	COMPLETE CABLE SHEAT 230V+ ELECTRICAL CONNECTOR
49	15551	SCREW TC+ 4X16 INOX
50	155210	LOCKING WASHER DIAM. 4
51	15523	NUT DIAM.4
52	154916	TUBE HOLDER
53	15560	SCREW TC+ 5X30 INOX
54	155174	WASHER 5X15X3 MM PVC
55	15525	NUT DIAM. 5 MM
55A	15517	WASHER 5X15X1,5 ZN
61	15645400C-D	COMPLETE PUMPTEC PUMP 400PSI – 120V
	15646400C-D	COMPLETE PUMPTEC PUMP 400PSI – 230V
62	15702D	HOSE NIPPLE
63	1573521	EXTRAFLEX PIPE 6/8 L=10CM
64	15534	SCREW TC BRUGOLA BOMBATA 5X10 BRUNITA
65	15525	NUT DIAM. 5
66	1549182	1 LITER TANK HOLDER
67	15540	BRASS WASHER
68	15147	NEOPRENE WASHER



REF	PART NUMBER	DESCRIPTION
1	153440C-L100-MG	REINFORCED PIPE 6x14 10m WITH ELBOW + COUPLING
1A	153440-L100-INN	REINFORCED PIPE 6x14 10m WITHOUT COUPLINGS
1B	15689-PE	QUICK DISCONNECT MALE, ATT. F.1/4
1C	1562614	COUPLING – ELBOW MF A10 1/4 – 1/4
1D	15687-PE	QUICK DISCONNECT FEMALE, ATT. M. ¼
1E	15541	TIE 265x9
2	159041CHP	SPRAYING GUN FOR GRACE HP (IN: M.1/4, OUT: F. 1/4)
	15689-PE	QUICK DISCONNECT MALE, ATT. F.1/4
	1590434	EXTENSION M1/4-M1/4
	159042-04	NOZZLE 04 WITH VARIABLE ANGLE AND BYPASS
4	159025	CLIP DIAM. 22 COMPLETE (49145+9023.1+58206)
4A	1549145	WASHER FOR LOCKING HOOK 49143
4B	159023.1	CLIP DIAM. 22 FOR HOOK SUPPORT (WITHOUT HOOK)
4C	1558206	SCREW TE 6x8 Zn
5	1549143	GRACEHP SPRAY TUBE HOOK
9	15117-HOOK	HOOK D.38 FOR NS300
10	1549141	LOWER SUPPORT FOR GRACEHP TOOLS AND HOSES
11	155191	RIVET 4x22
12	15529	STAINLESS STEEL WASHER 4x16

**TP18SX-HP
BRACKETS AND TOOLS
March 2011**



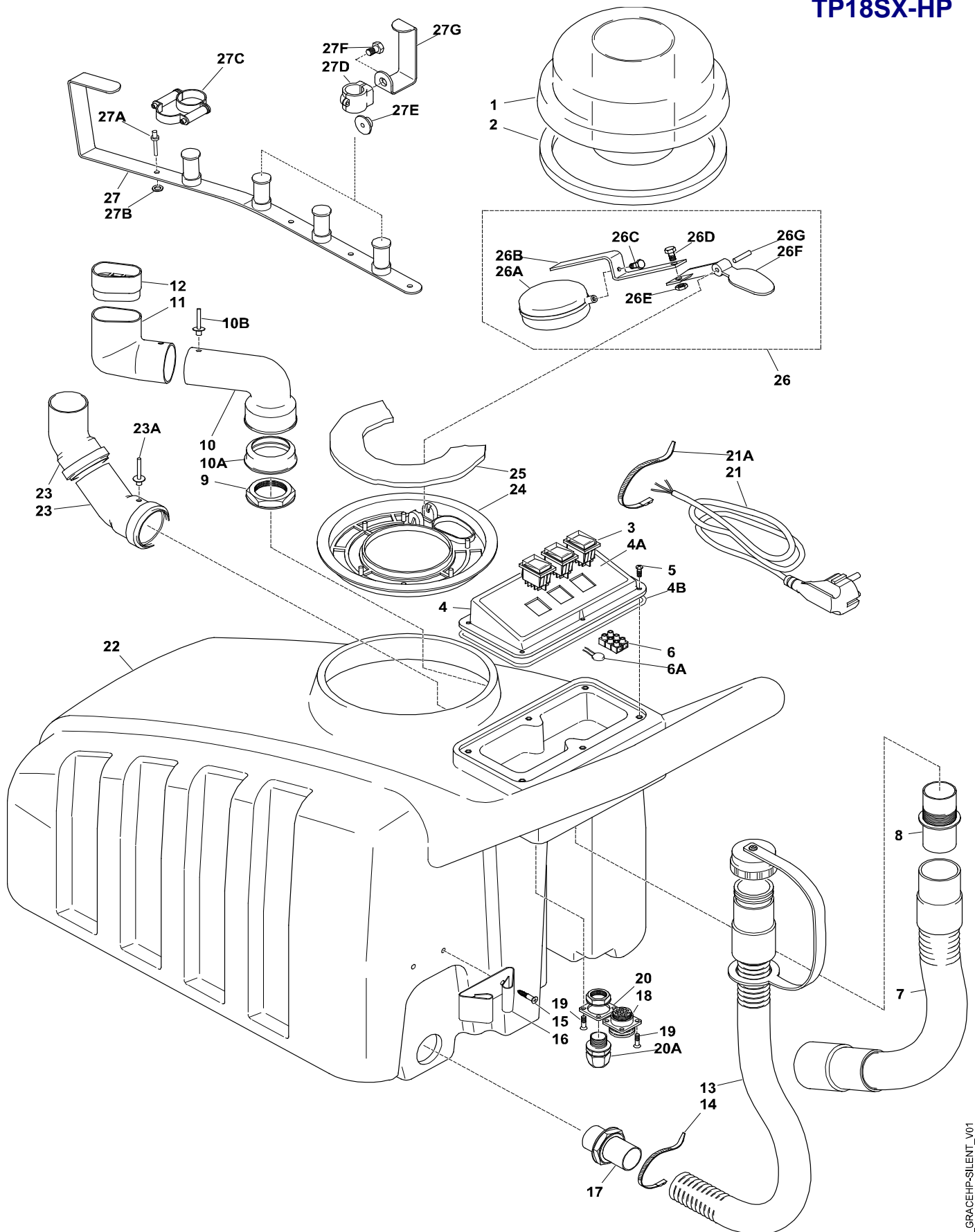


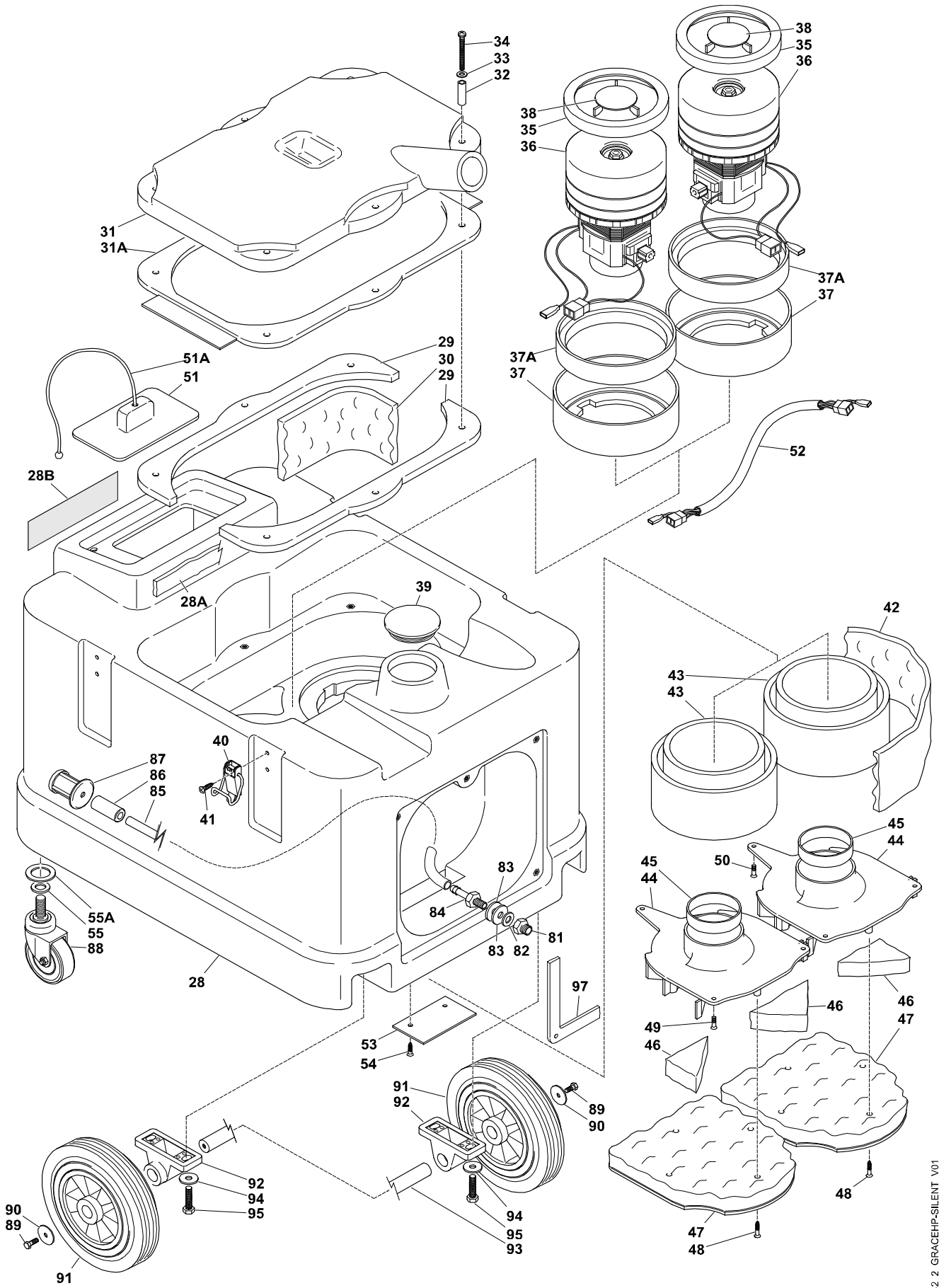
**TP18SX-HP
BRACKETS AND TOOLS
March 2011**

HIGH-PRESSURE CARPET EXTRACTOR MODEL TP18SX-HP BRACKETS AND TOOLS

Ref	Code	Description
1	153440C-L100-TG	REINFORCED PIPE 6x14 10m WITH ELBOW + 689-T
1A	153440-L100-INN	REINFORCED PIPE 6x14 10m WITHOUT COUPLINGS
1B	15689-T	QUICK DISCONNECT MALE, ATT. F.1/4 WITH ANTIDRIP
1C	1562614	COUPLING – ELBOW MF A10 1/4 – 1/4
2	159041CHP	SPRAYING GUN FOR GRACE HP (IN: M.1/4, OUT: F. 1/4)
	15689-PE	QUICK DISCONNECT MALE, ATT. F.1/4
	1590434	CONNECTING PART M1/4- F.10MA
	1590430	EXTENSION FOR PRESPRAY GUN 10M-M1/4
	159042-06	NOZZLE 06 WITH VARIABLE ANGLE AND BYPASS
4	159025	CLIP DIAM. 22 COMPLETE (49145+9023.1+58206)
4A	1549145	WASHER FOR LOCKING HOOK 49143
4B	159023.1	CLIP DIAM. 22 FOR HOOK SUPPORT (WITHOUT HOOK)
4C	1558206I	SCREW TE 6x8 INOX
5	1549143	GRACEHP SPRAY TUBE HOOK
	8020283	COMPLETE KIT BRACKETS + HOOK TO HANG HOSES & WAND (CODEX: 2x49148+10x5191+10x529+1x117-HOOK)
7	1549148	LOWER SUPPORT FOR SERENA/GRACE TOOLS AND HOSES
8	155191	RIVET 4x22
9	15529	STAINLESS STEEL WASHER 4x16
10	15117-HOOK	HOOK D.38 FOR NS300

January 2016
TP18SX-HP



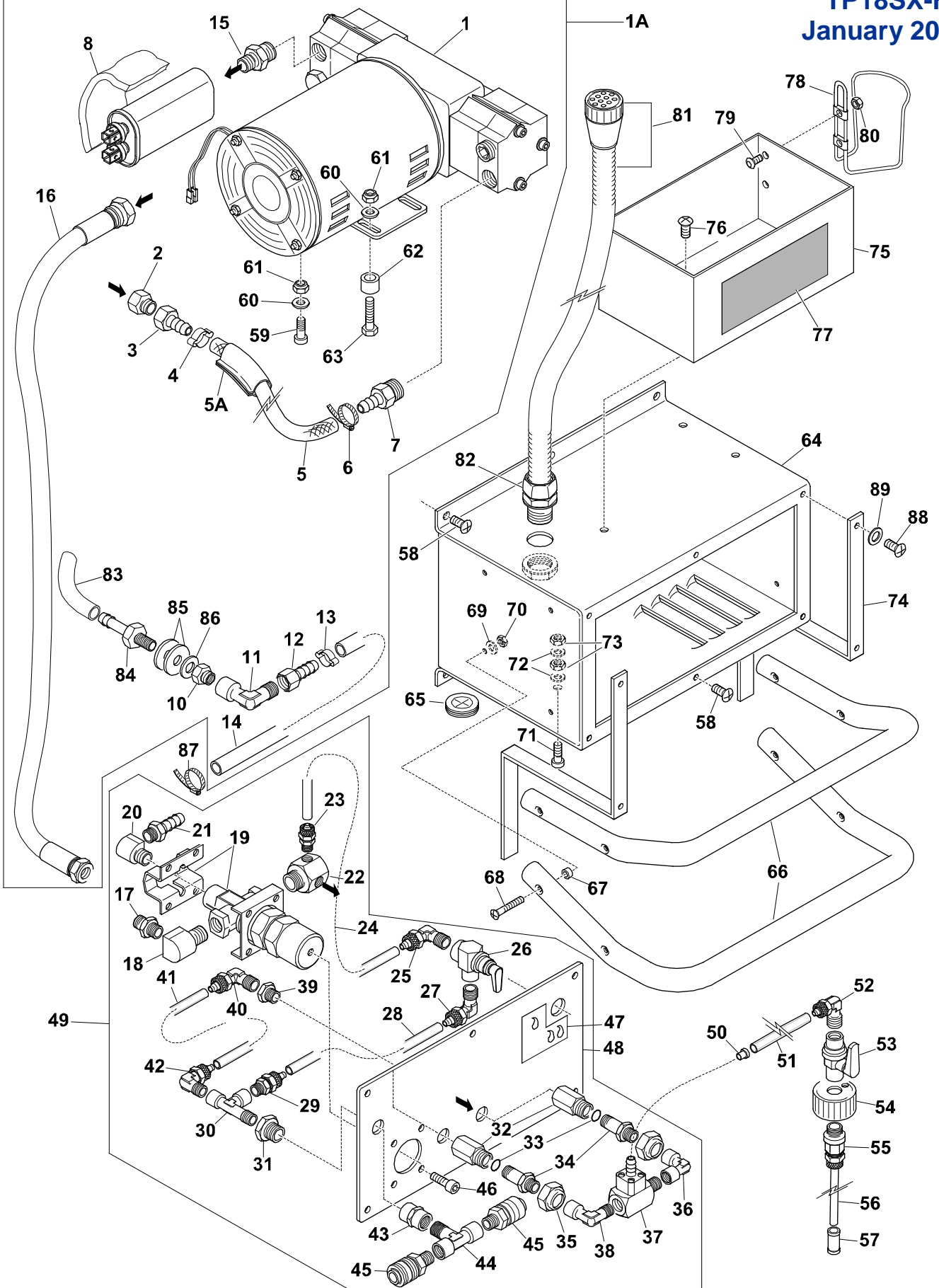


INJECTION-EXTRACTION MACHINE MODEL TP18SX-HP (SERIAL N> 90.000)

Ref.	Code	Description
1	15178	COVER
	15178C	COVER WITH GASKET
2	15179	GASKET
3	15217	2 POSITIONS SWITCH
4	15189	PANEL
4A	151814-NORTH	LABEL FOR UPPER PANEL TP18SX-HP
4B	15128	UPPER PANEL GASKET
5	15551	STAINLESS STEEL SCREW TC+ 4x16
6	152361	CONNECTING TERMINAL
6A	158132	VARISTOR (230V)
7	153641C-GRACE	COMPLETE HOSE D.50 FOR GRACE-SILENT
8	153652	HOSE NIPPLE D.50 FOR GRACE SILENT
9	15548134	RING NUT 1 + 3/4" FOR GRACE-SILENT
10	15153.1	LARGE ELBOW 90° WITHOUT GASKET
10A	15153.2	GASKET FOR LARGE ELBOW 90°
10B	15519	RIVET 4 x 12
11	15131.1	ELBOW FOR GRACE FLOATER
13	151591C-GRSIL	COMPLETE DRAIN HOSE FOR GRACE-SILENT
14	15541	TIE
15	15542	SCREW 4,2x16
16	151602	CLIP FOR DRAIN HOSE D.38
17	151612	HOSE NIPPLE 1"1/4 FOR DIAM.38
18	15259-TP18SX	SOCKET FOR TP18SX , WITH WIRES
19	15538	SCREW TC+ 3,9x13
20	15109	FAIRLEAD PLATE
20A	15295	FAIRLEAD WITH NUT
21	152091	CABLE 3x2,5x10M. COMPLETE WITH EURO PLUG
	15215	CABLE 3xAWG14 L.15m. SJTW-CSA USA PLUG
21A	15541	TIE
22	151510AZ	GRACE-SILENT BLUE UPPER TANK
23	15183	ELBOW
23A	15519	RIVET 4 x 12
26	151707C-GRACE	COMPLETE FLOATER FOR GRACE
	1557504I	SCREW TE 4x12 INOX
	155210	LOCKING WASHER DIAM. 4 Zn
	15523	NUT DIAM. 4mm
	151713	PLATE FOR MAXI FOAM FLOATER
	151707	SPHERICAL FLOATER
	1558206W	SCREW TE 6x8 1/4X3/8 WHITWORTH
	1552106I	LOCKING WASHER DIAM. 6 INOX
	1517041	MOVING PART FOR GRACE FLOATER
	1517031	FIXED PART FOR GRACE FLOATER
	152025	FILTRO PPI30 D.44
27	1549150	SUPPORT FOR ACCESSORIES AND HOSES GRACE-SILENT
27A	15519	RIVET 4 x 12
27B	15529	WASHER 4x16x1 INOX UNI 6593
27C	15117-HOOK	HOOK D.38 FOR NS300
27D	159025	COMPLETE CLIP WITH SCREW
27E	1549143	HOOK FOR PRESPRAY HOSE GRACEHP
28	151520AZ	GRACE-SILENT BLUE LOWER TANK
28A	151552	FRONT GASKET FOR TANK

INJECTION-EXTRACTION MACHINE MODEL TP18SX-HP (SERIAL N> 90.000)

Ref.	Code	Description
28B	151871	SANTOEMMA LABEL FOR TANKS
29	151556	GASKET TANK/MANIFOLD GRACE-SILENT (3 STAGES)
30	152061	UPPER SOUNDPROOFING PART GRACE SILENT
31	151550N	MANIFOLD FOR GRACE-SILENT 1 MOTOR
31A	1515541	GASKET FOR GRACE-SILENT MANIFOLD
32	1556352	THIMBLE FOR MANIFOLD SCREWS GRACE-SILENT
33	155171	WASHER 5x15x1,5 UNI 6593 INOX
34	155713I	SCREW TC+ 5x50 UNI 7687 INOX (3 STAGES)
	15571I	SCREW TC+ 5x40 UNI 7687 INOX (2 STAGES)
35	1581213	MOTOR GASKET D.145x13
36	15809PA	3 STAGES MOTOR 1400W 120V 60Hz (HW)
	15808PA/AK	3 STAGES AKUSTEK MOTOR 1500W 240V 60Hz (HW)
	15821	2 STAGES MOTOR 1200W 220-240V 50/60 HZ
	15820	2 STAGES MOTOR 1200W 110-120V 50/60 HZ
	15810PA	3 STAGES MOTOR 1300W 100V 50-60Hz
37	1513211	SOUNDPROOFING UPPER CYLINDER FOR GRACE-SILENT
37A	1581213	MOTOR GASKET D.145x13 (FOR 2 STAGES)
38	15824	MOTOR VALVE
39	1550243	ROUND CAP FOR GRACE LOWER TANK
40	15142	COUPLER
41	15542	SCREW TC+ 4,2x16 Zn
42	152062	LOWER SOUNDPROOFING PART GRACE SILENT
43	1513212	SOUNDPROOFING LOWER CYLINDER FOR GRACE-SILENT
44	151412	LOWER FLANGE GRACE-SILENT MOTOR
45	151322	ROUND SEALING PART FOR MOTOR COOLING AIR
46	1513221	SEALING PART FOR GRACE COOLING AIR
47	152000C	COMPLETE SOUNDPROOFING PANEL (2000+2011)
48	15544	SCREW TC+ 4.2x22 Zn
49	15536	STAINLESS STEEL SCREW TC+ 4x10
50	15536	STAINLESS STEEL SCREW TC+ 4x10
51	151334	COVER FOR LOWER TANK
51A	1513341	TIE FOR LOWER TANK COVER
52	1529714	CABLE 3x1,5mmq FOR GRACE-SILENT L700mm
53	151482	COVER PLATE FOR CABLES GRACE-SILENT
54	15542	SCREW TC+ 4,2x16 Zn
55	15540	WASHER 10x20x0,8
55A	15597	WASHER 20x37x3 UNI 6592 Zn
81	157671	COUPLING A4/Z M.1/4 F.1/8
82	15540	BRASS WASHER
83	15147	NEOPRENE WASHER
84	15702D	CONNECTING PART
85	15745	EXTRAFLEX HOSE FOR FILTER 67cm
86	15747	BALLAST
87	15608	FILTER
88	15115.1	WHEEL
89	15582	STAINLESS STEEL SCREW TE 6x14
90	155632	WASHER 6x30x2 Zn
91	15422	WHEEL
92	15419N	PILLOW BLOCK
93	154181	SHAFT FOR WHEELS SERENA/ELITE
94	15594	WASHER 8x24 Zn
95	15583	SCREW TE 8x20 UNI 5739 Zn 8.8
97	151866	GASKET FOR GRACE-SILENT PANEL



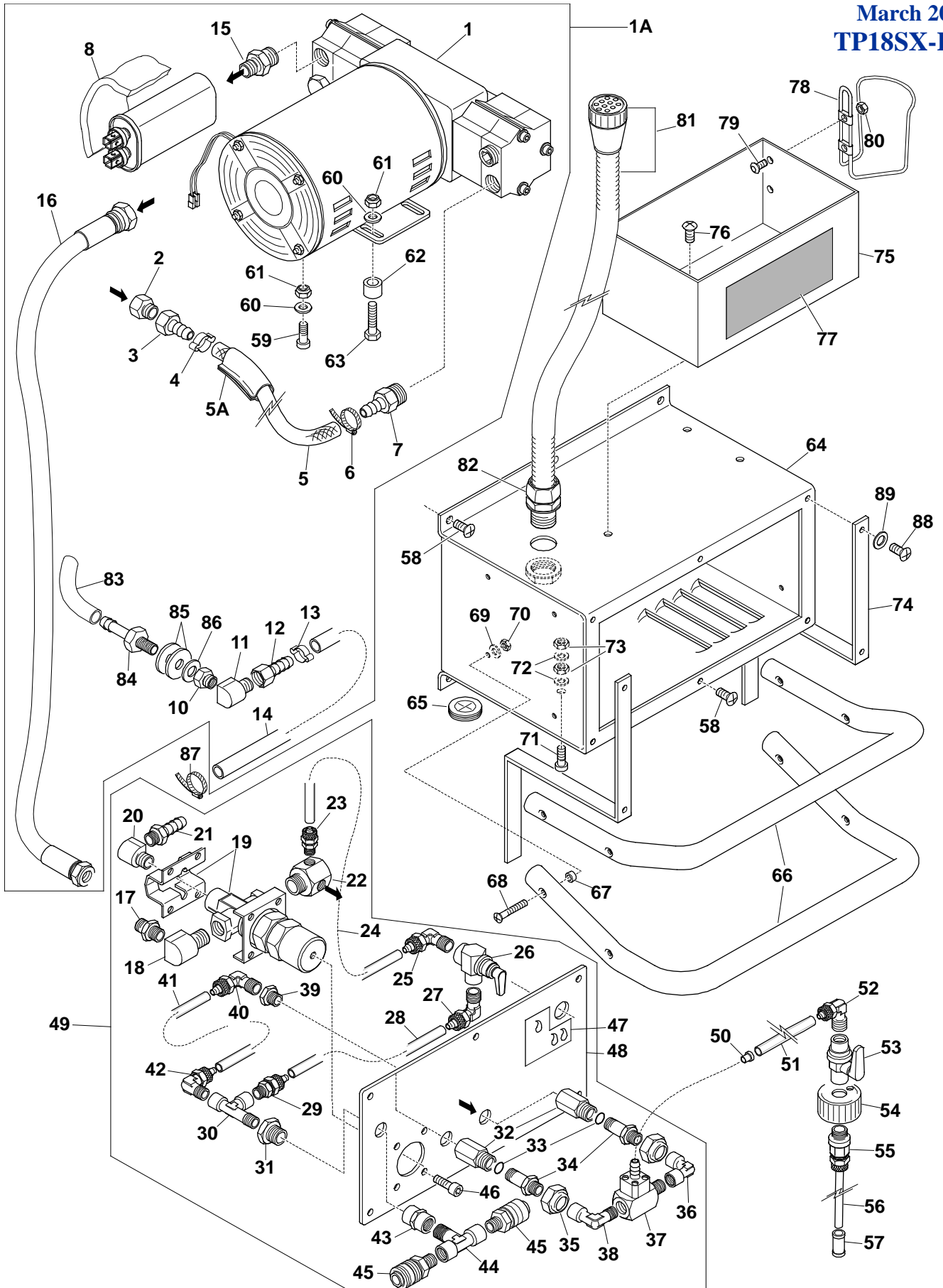
HIGH-PRESSURE CARPET EXTRACTOR MODEL TP18SX-HP (SERIAL N>90.000)

Ref	Code	Description
1	15646400	PUMPTEC PUMP 230V 400 PSI
1A	15646400C-HP	PUMPTEC PUMP 230V 400 PSI COMPLETE FOR FT30/GR.HP
3	156991	HOSE NIPPLE F. 1/4 DIAM.8
4	15609	TIE
5	15343016	RAGNO PIPE 8x14 L=380mm
6	156092	TIE WITH SCREW
7	156996	HOSE NIPPLE M.3/8 DIAM.9
8	151841	RUBBER PROTECTION D.35x53 L=100mm
10	157671	COUPLING A4/Z F.1/8 – M. 1/4
11	1562614	ELBOW COUPLING MF 1/4-1/4
12	156991	HOSE NIPPLE DIAM. 8, ATT. F.1/4"
13	15609	TIE
14	15343015	RAGNO PIPE 8x14 L=570mm
15	1573821	NIPPLE 3/8 NPT – 1/4GAS CILINDR.
16	15343091C	HIGH PRESSURE PIPE L450mm F1/4-F1/4 GAS-OTT.
17	15764	COUPLING A1 1/4-1/4
18	1562614-NPT	ELOBOW MF NPT-NPT 1/4 1/4
19	15647400	BY PASS PUMPTECC 400 + BRACKET
20	1562614-NPT	ELOBOW MF NPT-NPT 1/4 1/4
21	156994	HOSE NIPPLE M. 1/4 DIAM.9
22	1562614T-NPT	SPECIAL COUPLING – 3WAYS ELBOW MFF 1/4NPT
23	15616	COUPLING C1 8/6-1/8
24	1574001	RILSAN HOSE H.R. 6/8 L=160mm
25	15605	ELBOW COUPLING C5 M.1/8 FOR 6/8 PIPE
26	156172	PANEL ON-OFF VALVE 90° 1/8
27	15605	ELBOW COUPLING C5 M.1/8 FOR 6/8 PIPE
28	1574003	RILSAN HOSE H.R. 6/8 L=150mm
29	15616	COUPLING C1 8/6-1/8
30	1572232	COUPLING T FFM A13 1/8
31	157671	COUPLING A4/Z M.1/4 - F.1/8
32	15714N-HP	COUPLING F ¼ FOR INJECTOR CONECTION
33	151373	O-RING FOR 714N
34	15698	AUTOMATIC COUPLING M.ATT.M. R6 8-1/8
35	15761	NUT 3/8" WITH HOLE DIAM. 14mm
36	1562615	ELBOW COUPLING FF 1/8"
37	1590452	CHEMICAL INJECTOR FF 1/8
	1590453-03	INTERNAL BUSHING 0,3
38	15626	ELBOW COUPLING MF A10 1/8-1/8
39	15684	COUPLING A6 F1/4-F1/8
40	15605	ELBOW COUPLING C5 M.1/8 FOR 6/8 PIPE
41	1574002	RILSAN HOSE H.R. 6/8 L=120mm
42	15605	ELBOW COUPLING C5 M.1/8 FOR 6/8 PIPE
43	1576214	COUPLING FF A3 1/4
44	1572251	COUPLING T FMF 1/4 A12
45	15687-T	QUICK DISCONNECT FEMALE, ATT. M. 1/4
46	15574	SCREW TC BRUGOLA 6x14
47	1515731	POWERTEC LABEL - 2 DROPS
48	1549124	REGULATION PANEL FOR GRACEHP
49	15PA-GRACEHP	COMPLETE PANEL FOR GRACEHP
50	151203-RED	RED TIP PER SMARTKIT
51	1573518	EXTRAFLEX PIPE 6/8 L=60cm

HIGH-PRESSURE CARPET EXTRACTOR MODEL TP18SX-HP (SERIAL N>90.000)

Ref	Code	Description
52	15605	ELBOW COUPLING C5 M.1/8 FOR 6/8 PIPE
53	156171	VALVE F-F1/8"
54	151202	CAP WITH HOLE FOR CHEMICAL BOTTLE - 5 LITRES
55	1512022	COUPLING FOR CHEMICAL CAP M.1/8"
55A	1554818	NUT 1/8" x 14 H=4mm
56	1574011	RILSAN PIPE 6/8 L = 290mm (EUROPE)
57	156081	FILTER FOR CHEMICAL (EUROPE)
58	15536	SCREW TC+ 4x10 INOX
60	155631	WASHER 6x12x1,5 Zn
61	15562A	LOCKING NUT DIAM. 6 mm
62	154905.4	ANTIVIBRATION SUPPORT M6 MF,H=20
63	1558206I	SCREW TE 6x8 UNI 5739 INOX
64	1549132N	PANEL FOR GRACEHP PUMP WITH FIXING PLATE
65	151631	BUSH 8x14
71	15551	SCREW TC+ 4x16 INOX
72	155210	LOCKING WASHER DIAM. 4
73	15523	NUT DIAM.4
75	154918	CONTAINER FOR CHEMICAL BOTTLE FOR GRACEHP
76	15575I	SCREW TE 5x12 INOX
77	151572	LOWER PANEL LABEL FOR GRACE HP
81	15261-GRACEHP	COMPLETE CABLE SHEAT + ELECTRICAL CONNECTOR
82	15262C	TERMINAL + NUT FOR CABLE SHEAT DIAM. 16
83	1573523	EXTRAFLEX PIPE 6/8 L=30cm
84	15702D	HOSE NIPPLE
85	15147	NEOPRENE WASHER
86	15540	BRASS WASHER
87	156092	TIE WITH SCREW FOR HOSE RAGNO 8x14 HP
88	15536	SCREW TC+ 4x10 INOX
90	1547235	PLATE FOR FIXING THE HEATER ON GRACHEHP-SIL
91	15534	SCREW TC BRUGOLA BOMBATA 5x10 Brunita
92	15525	NUT D.5

March 2011
TP18SX-HP



HIGH-PRESSURE CARPET EXTRACTOR MODEL TP18SX-HP

Ref	Code	Description
1	15646400	PUMPTEC PUMP 230V 400 PSI
1A	15646400C-F	PUMPTEC PUMP 230V 400 PSI COMPLETE FOR FT30/GR.HP
2	157671	COUPLING A4/Z F.1/8 – M. 1/4
3	156991	HOSE NIPPLE F. 1/4 DIAM.8
4	15609	TIE
5	1534304	RAGNO PIPE 8x14 L=365mm
5A	152852	SYLICON INSULATION
6	156092	TIE WITH SCREW
7	156996	HOSE NIPPLE M.3/8 DIAM.9
8	151841	RUBBER PROTECTION D.35x53 L=100mm
10	157671	COUPLING A4/Z F.1/8 – M. 1/4
11	1562614-NPT	ELBOW COUPLING MF 1/4-1/4 NPT
12	156991	HOSE NIPPLE DIAM. 8, ATT. F.1/4"
13	15609	TIE
14	1534308	RAGNO PIPE 8x14 L=480mm
15	1573821	NIPPLE 3/8 NPT – 1/4GAS CILINDR.
16	1534309C	HIGH PRESSURE PIPE L450mm F1/4-F1/4 GAS-OTT.
17	15764	COUPLING A1 1/4-1/4
18	1562614-NPT	ELOBOW MF NPT-NPT 1/4 1/4
19	15647400	BY PASS PUMPTECC 400 + BRACKET
20	1562614-NPT	ELOBOW MF NPT-NPT 1/4 1/4
21	156994	HOSE NIPPLE M. 1/4 DIAM.9
22	1562614T-NPT	SPECIAL COUPLING – 3WAYS ELBOW MFF 1/4NPT
23	15616	COUPING C1 8/6-1/8
24	1574001	RILSAN HOSE H.R. 6/8 L=160mm
25	15605	ELBOW COUPLING C5 M.1/8 FOR 6/8 PIPE
26	156172	PANEL ON-OFF VALVE 90° 1/8
27	15605	ELBOW COUPLING C5 M.1/8 FOR 6/8 PIPE
28	1574003	RILSAN HOSE H.R. 6/8 L=150mm
29	15616	COUPING C1 8/6-1/8
30	1572232	COUPLING T FFM A13 1/8
31	157671	COUPLING A4/Z M.1/4 - F.1/8
32	15714N-HP	COUPLING F ¼ FOR INJECTOR CONECTION
33	151373	O-RING FOR 714N
34	15698	AUTOMATIC COUPLING M.ATT.M. R6 8-1/8
35	15761	NUT 3/8" WITH HOLE DIAM. 14mm
36	1562615	ELBOW COUPLING FF 1/8"
37	1590452	DEMA INJECTOR FF 1/8
	1590453-03	INTERNAL BUSHING 0,3
38	15626	ELBOW COUPLING MF A10 1/8-1/8
39	15684	COUPLING A6 F1/4-F1/8
40	15605	ELBOW COUPLING C5 M.1/8 FOR 6/8 PIPE
41	1574002	RILSAN HOSE H.R. 6/8 L=120mm
42	15605	ELBOW COUPLING C5 M.1/8 FOR 6/8 PIPE
43	1576214	COUPING FF A3 1/4
44	1572251	COUPLING T FMF 1/4 A12
45	15687-T	QUICK DISCONNECT FEMALE, ATT. M. 1/4
46	15574	SCREW TC BRUGOLA 6x14
47	1515731	POWERTEC LABEL - 2 DROPS
48	1549122N	REGULATION PANEL FOR GRACEHP 400 PSI
49	15PA-GRACEHP	COMPLETE PANEL FOR GRACEHP
50	151203-RED	RED TIP PER SMARTKIT
51	1573518	EXTRAFLEX PIPE 6/8 L=60cm

HIGH-PRESSURE CARPET EXTRACTOR MODEL TP18SX-HP

Ref	Code	Description
52	15605	ELBOW COUPLING C5 M.1/8 FOR 6/8 PIPE
53	156171	VALVE F-F1/8"
54	151202	CAP WITH HOLE FOR CHEMICAL BOTTLE - 5 LITRES (EUROPE)
55	15616	COUPLING C1 8/6-1/8
56	1574011	RILSAN PIPE 6/8 L = 290mm (EUROPE)
57	156081	FILTER FOR CHEMICAL (EUROPE)
58	15536	SCREW TC+ 4x10 INOX
59	15574	SCREW TC BRUGOLA 6x14
60	155631	WASHER 6x12x1,5 Zn
61	15562A	LOCKING NUT DIAM. 6 mm
62	1534303	RAGNO PIPE 6x14 H=12 mm
63	1558230	SCREW TE 6x30 Zn
64	1549132N	PANEL FOR GRACEHP PUMP WITH FIXING PLATE
65	151631	BUSH 8x14
66	154916	TUBE HOLDER
67	155174	WASHER 5x15x3 mm PVC
68	15560	SCREW TC+ 5x30 INOX
69	155171	WASHER 5x15x1,5 INOX
70	15525	NUT DIAM. 5 mm
71	15551	SCREW TC+ 4x16 INOX
72	155210	LOCKING WASHER DIAM. 4
73	15523	NUT DIAM.4
74	1547221	BRACKET FOR FIXING HEATER ON GRACEHP
75	154918	CONTAINER FOR CHEMICAL BOTTLE FOR GRACEHP
76	15575I	SCREW TE 5x12 INOX
77	151572	LOWER PANEL LABEL FOR GRACE HP
78	1549182	1 LITRE TANK HOLDER
79	15534	SCREW TC BRUGOLA BOMBATA 5x10 Brunita
80	15525	NUT DIAM. 5
81	15261-GRACEHP	COMPLETE CABLE SHEAT + ELECTRICAL CONNECTOR
82	15262C	TERMINAL + NUT FOR CABLE SHEAT DIAM. 16
83	1573523	EXTRAFLEX PIPE 6/8 L=22cm
84	15702D	HOSE NIPPLE
85	15147	NEOPRENE WASHER
86	15540	BRASS WASHER
87	156092	TIE WITH SCREW FOR HOSE RAGNO 8x14 HP
88	1553620	SCREW TC+ 4x20 INOX
89	15589	WASHER 4x16 INOX