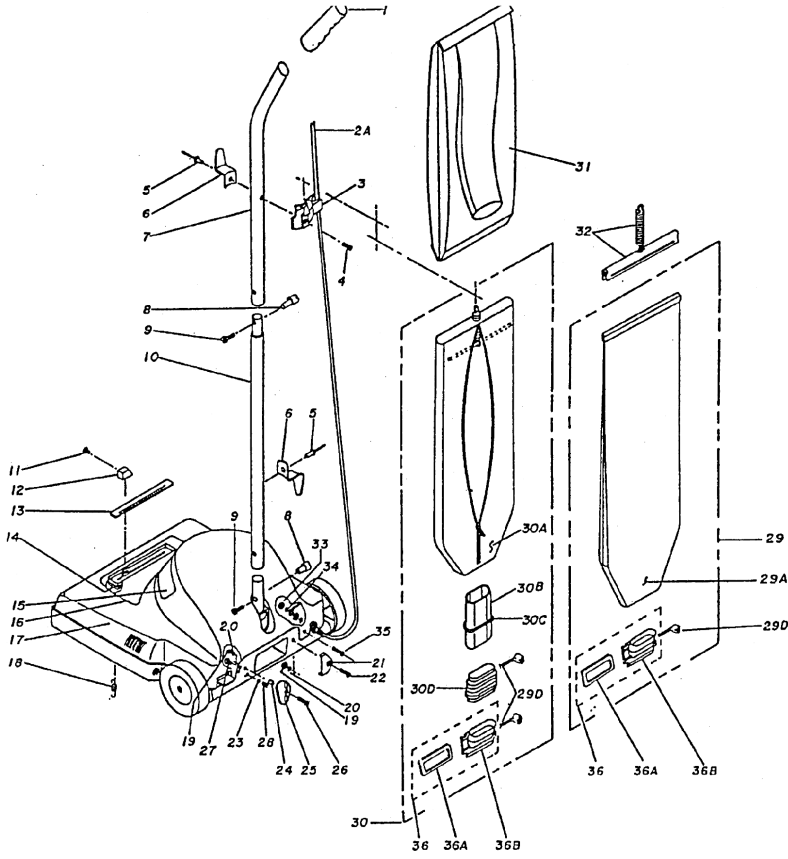


PF1887VC

TABLE OF CONTENTS

PF1886-PF1887 Main Assembly	3
PF1886-PF1887 Base Assembly	6
PF1886-PF1887 Motor Assembly	9

PF1886-PF1887 Main Assembly



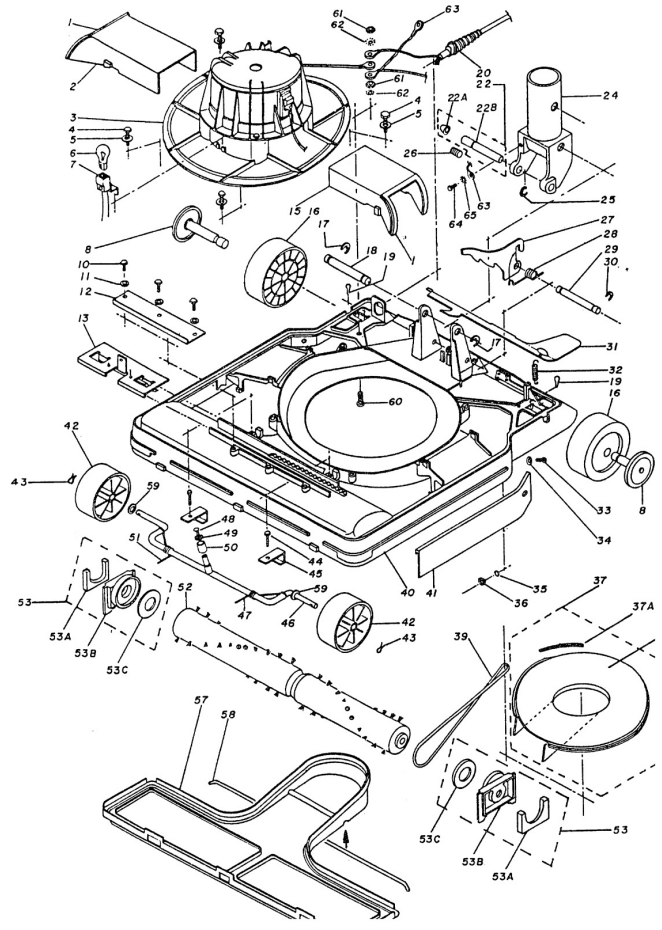
Rendered by LeadVenture, Inc.

PF1886-PF1887 Main Assembly

Ref Number	Part Number	Part Description	Context Notes	Quantity
1	MV43	Handle Grip		1
2	M1377	Power Cord Assembly 18/3 x 50' SJT		1
3	MV22	Cord Retainer		1
4	MV44	Screw #8 x 1/2"		1
5	MV45	Rivet		2
6	MV19	Cord Hook		2
7	MV47	Upper Handle		1
8	MV17	Handle Nut, Spacer, and Screw (Old Style)		2
8A	MV17A	Handle Nut Only (New Style)		1
9	MV16A	Handle Screw (New Style)		2
10	MV48	Lower Handle		1
11	X8238	Screw # 6-32 x 3/8"		1
12	MV50	Wheel Height Knob		1
13	17-2486-3	Height Adjustment Label		1
14	37-0136-4	Felt		1
17	MV62	12" Hood (PF1886 Models)		1
17A	MV97	16" Hood (PF1887 Models)		1
18	MV07	Hood Spring		1
19	02-0037-8	Nut		2
20	04-0271-9	Star Washer		2
21	MV51	Vacuum Bag Support		1
22	MV52	Screw # 10-32 x 5/8"		1
23	MV53	Ball		1
24	MV54	Bag Knob Spacer		1
25	MV55	Bag Knob		1
26	MV56	Screw #10-32 x 3/4"		1

Ref Number	Part Number	Part Description	Context Notes	Quantity
26	MV56	Screw #10-32 x 3/4"		1
27	01-0154-3	Screw #6 x 5/16"		1
28	MV57	Knob Spring		1
29	G825B	Complete Cloth Bag Assembly		1
29A	G828	Blue TiTex Bag		1
30C	W2390	Spring		1
30D	MV61	Bag Hose Zipper		1
31	265PB	Paper Vacuum Bag (Enviro Clean 3 Pack)		1
32	W2363	Chrome Bag Slide w/Spring		1
33	MV82	Nut		1
36A	L83	Bag Gasket		1

PF1886-PF1887 Base Assembly



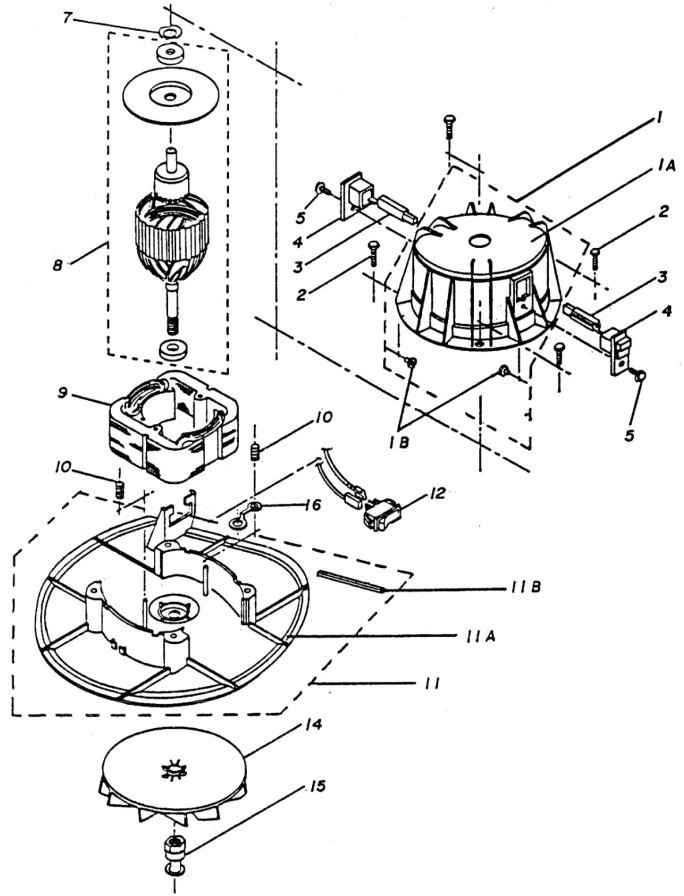
Rendered by LeadVenture, Inc.

PF1886-PF1887 Base Assembly

Ref Number	Part Number	Part Description	Context Notes	Quantity
2	MV70	Right Air Duct		1
8	MV12	Rear Axle and Hub Assembly		2
15	MV71	Left Air Duct		1
16	MV06	Rear Wheel		2
17	MV30	C Washer		1
18	MV31	Bolt		1
22	MV46	Switch Actuator Assembly		1
24	MV20	Tube Socket		1
27	MV32	Handle Cam		1
28	MV33	Cam Spring		1
29	MV34	Cam Bolt		1
30	MV30	C Washer		1
31	MV36	Handle Release Pedal		1
32	MV37	Foot Pedal Spring		1
37	MV15	Fan Cover Assembly		1
39	MV05	Belt		1
40	MV41	12" Chassis (PF1886 Models)		1
40A	MV95	16" Chassis (PF1887 Models)		1
41	MV58	12" Bumper (PF1886 Models)		1
41A	MV96	16" Bumper (PF1887 Models)		1
42	MV38	Front Wheel		2
43	MV39	Cotter Pin		2
44	MV74	Screw		2
45	MV75	Axle Retainer		2
46	MV60	Front Axle Assembly		1
47	MV65	Left Front Axle Spring		1
48	MV67	Rivet		2
49	MV68	Axle Washer		2
50	MV69	Axle Bushing		2

Ref Number	Part Number	Part Description	Context Notes	Quantity
51	MV66	Right Front Axle Spring		1
52	MV11A	12" Brush Roll Assembly (PF1886 Models)		1
52A	MV73	16" Brush Roll Assembly (PF1887 Models)		1
53	MV13	Left Hand Bearing Support		2
53A	MV13A	Right Hand Bearing Support		1
57	MV23	12" Bottom Plate (PF1886 Models)		1
57A	MV94	16" Bottom Plate (PF1887 Models)		1
58	MV08	Bottom Plate Retainer		2

PF1886-PF1887 Motor Assembly



Rendered by LeadVenture, Inc.

PF1886-PF1887 Motor Assembly

Ref Number	Part Number	Part Description	Context Notes	Quantity
1A	MV64	Motor Cover		1
3	MV63	Carbon Brush		2
4	MV21	Carbon Brush Holder		2
8	MV10	Armature Assembly		1
9	MV09	Field Assembly		1
11	MV27	Motor Base w/Gasket		1
11B	MV49	Motor Base Gasket		1
14	MV02	Fan		1
15	MV01	Belt Pulley Nut		1