

# 09. PAS20DX

# TABLE OF CONTENTS

PAS20DX Cover Shot .....	3
Frame Assembly .....	5
Brush Assembly .....	9
Tank and Squeegee .....	12
Wheels .....	16
Electrical Layout .....	18

PAS20DX Cover Shot

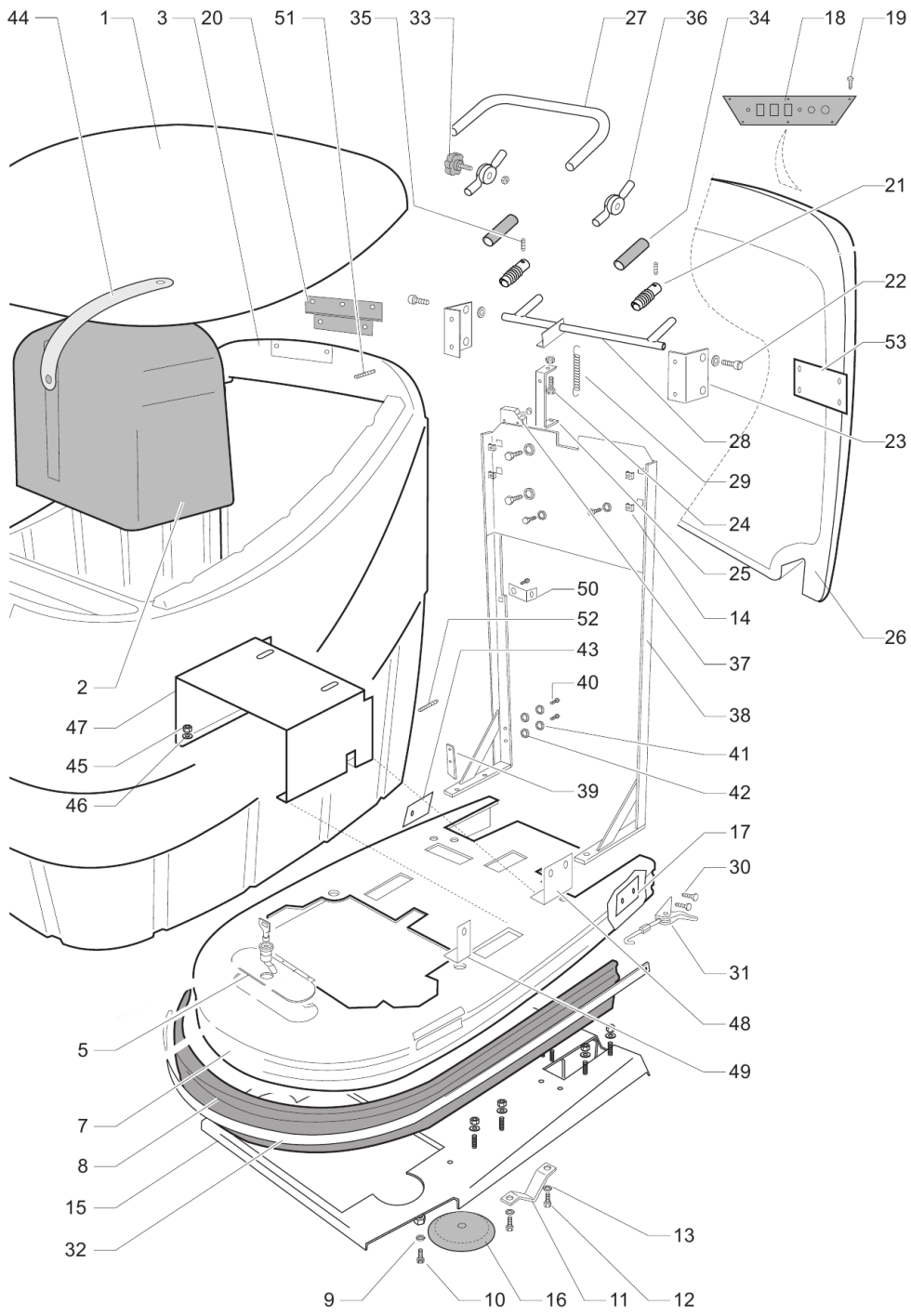


Rendered by LeadVenture, Inc.

PAS20DX Cover Shot

<b>Ref Number</b>	<b>Part Number</b>	<b>Part Description</b>	<b>Context Notes</b>	<b>Quantity</b>
-------------------	--------------------	-------------------------	----------------------	-----------------

# Frame Assembly



Rendered by LeadVenture, Inc.

## Frame Assembly

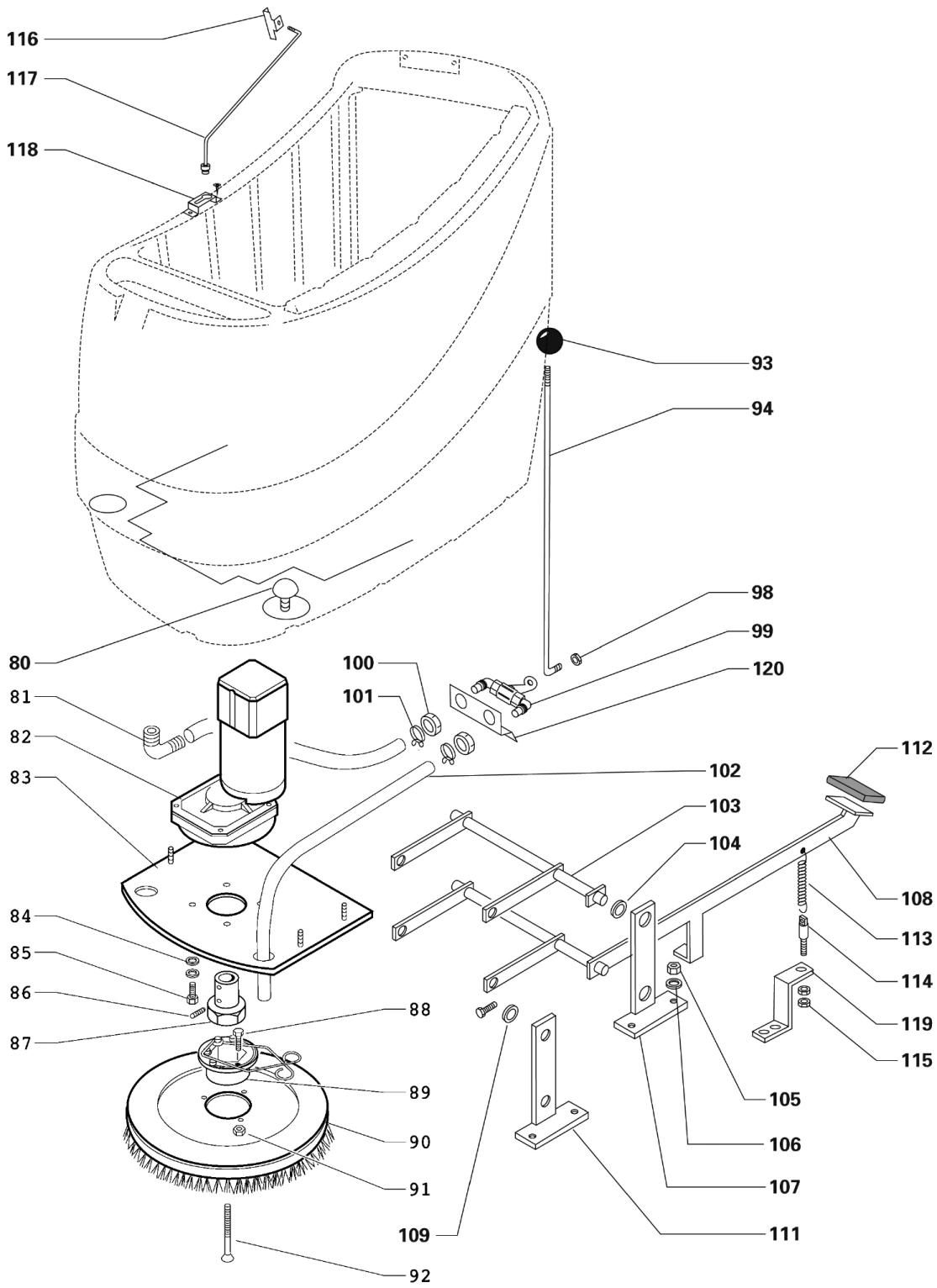
<b>Ref Number</b>	<b>Part Number</b>	<b>Part Description</b>	<b>Context Notes</b>	<b>Quantity</b>
1	PAS462	Cover		1
2	510.002	Vacuum Motor Cover		1
3	510.003	Tank Cover		1
5	PAS482	Shroud Key Cover		1
7	510.007	Housing		1
8	PAS921	Splash Guard		1
9	PAS157	Washer		10
10	PAS223	Screw M10 x 50		10
11	510.011	Transaxle Bracket		2
12	PAS167	Screw		2
13	PAS188	Washer		2
14	PAS466	Nut		1
15	PAS468	Frame		1
16	PAS1	Bumper Wheel		1
17	PAS274	Left Side Plate		1
18	PAS493	Control Panel		1
	PAS295	Reverse Button		1
	PAS54	Brush Switch		1
	PAS54	Brush Switch		1
	PAS56	Micro Switch		1
	PAS53NS	Key and Switch (New Style)		1
	PAS53K	Key Blank		1
	PAS52N	Rectangle Battery Gauge		1
19	PAS153	Screw		6
20	PAS109	Hinge		
21	PAS335	Handle Bellows		2

<b>Ref Number</b>	<b>Part Number</b>	<b>Part Description</b>	<b>Context Notes</b>	<b>Quantity</b>
22	PAS167	Screw		4
23	501.033	Bracket		2
24	501.027	Screw		1
25	501.028.1	Support		1
26	510.026.1	Panel (New Type)		1
27	PAS159A	Handle		1
28	PAS209	Lever		1
29	PAS329	Handle Spring		1
30	PAS926	Screw		
31	PAS122	Hook and Latch Assembly		
32	PAS919	Bumper Strap		
33	PAS337	Knob		
34	PAS338	Handle		
35	PAS148	Set Screw M8 x 25		
36	PAS339	Coupling		
37	PAS56	Micro Switch		
38	510.038	Panel		
39	PAS259	Cross Member		
40	430.107	Screw		
41	ER320	Washer		
42	PAS208	Washer		
43	510.043	Right Side Plate		
44	PAS484	Elastic Strap		
45	PAS176	Nut		
46	PAS188	Washer		
47	510.047	Support		
48	510.048	Bracket		

<b>Ref Number</b>	<b>Part Number</b>	<b>Part Description</b>	<b>Context Notes</b>	<b>Quantity</b>
49	510.049	Frame Plate		
50	510.050	Plate		
51	510.051	Tie Rod		
52	510.052	Pin		
53	PAS504	Rear Fuse Cover Panel		



# Brush Assembly



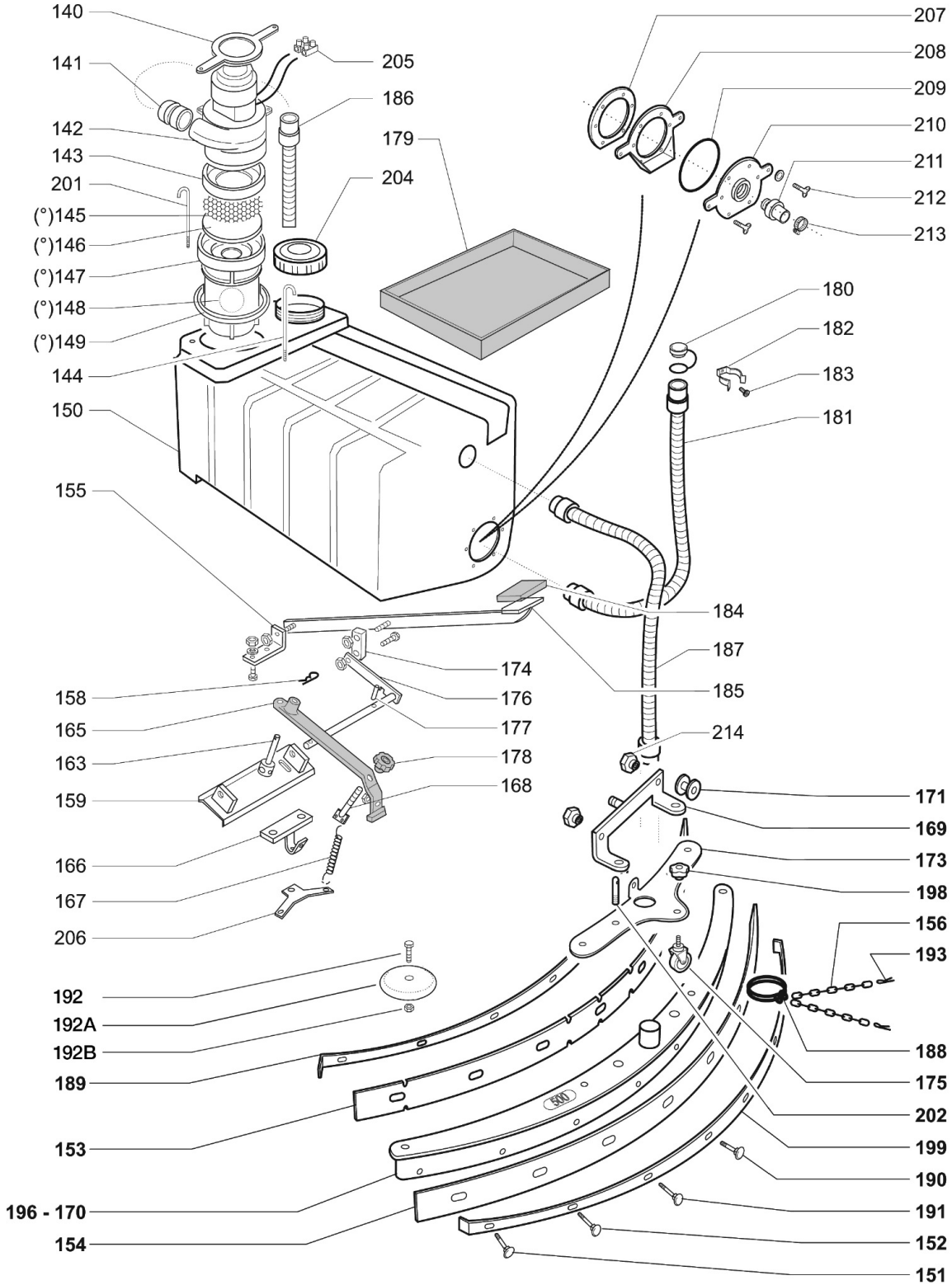
Rendered by LeadVenture, Inc.

## Brush Assembly

<b>Ref Number</b>	<b>Part Number</b>	<b>Part Description</b>	<b>Context Notes</b>	<b>Quantity</b>
80	PAS3	Filter		1
81	PAS296	Elbow Fitting		1
82	PAS4	Brush Motor		1
83	510.083	Brush Motor Mounting Plate		4
84	ER320	Washer		4
85	PAS162	Bolt M6 x 12		4
86	PAS320	Dowel Pin		1
87	PAS5	Coupling Half		1
88	PAS162	Bolt M6 x 12		3
89	PAS6	Pad Retainer		1
	PAS7	Long Spring for PAS6		1
90	PAS8	18" Poly Scrub Brush w/PAS6		1
90	PAS132	Grit Brush w/PAS6		1
90	PAS95	18" Grit II Scrub Brush w/PAS6		1
90	PAS10	Pad Driver w/PAS6		
90	PAS135	Dynascrub Brush w/PAS6		1
91	PAS149	Nut		3
92	PAS111	Screw 5/16-20 x 1-3/8"		3
93	PAS11	Knob		1
94	510.094	Solution Control Rod		1
98	PAS304	Nyloc Nut		1
99	PAS12	Solution Valve w/3/8" Elbow Fittings		1
100	PAS262	Nut		2
101	PX42	Hose Clamp		2
102	PAS288	Hose		1
103	PAS204	Upper Lever		2

<b>Ref Number</b>	<b>Part Number</b>	<b>Part Description</b>	<b>Context Notes</b>	<b>Quantity</b>
104	PFS0016	Washer		2
105	PAS176	Nut		4
106	PAS188	Washer		4
107	430.119	Support		2
108	PAS317	Pedal Lever		1
109	PFA0016	Washer		2
111	PAS249	Support		2
112	PAS14	Pedal Cover		1
113	PAS230	Spring		1
114	PAS63	Tie Rod		1
115	PAS176	Nut		1
116	PAS261	Plate		1
117	PAS347	Lid Support Rod		1
	PAS359	Clip		1
118	PAS344	Plate		1
119	510.119	Bracket		1
120	510.301	Support		1

# Tank and Squeegee



Rendered by LeadVenture, Inc.

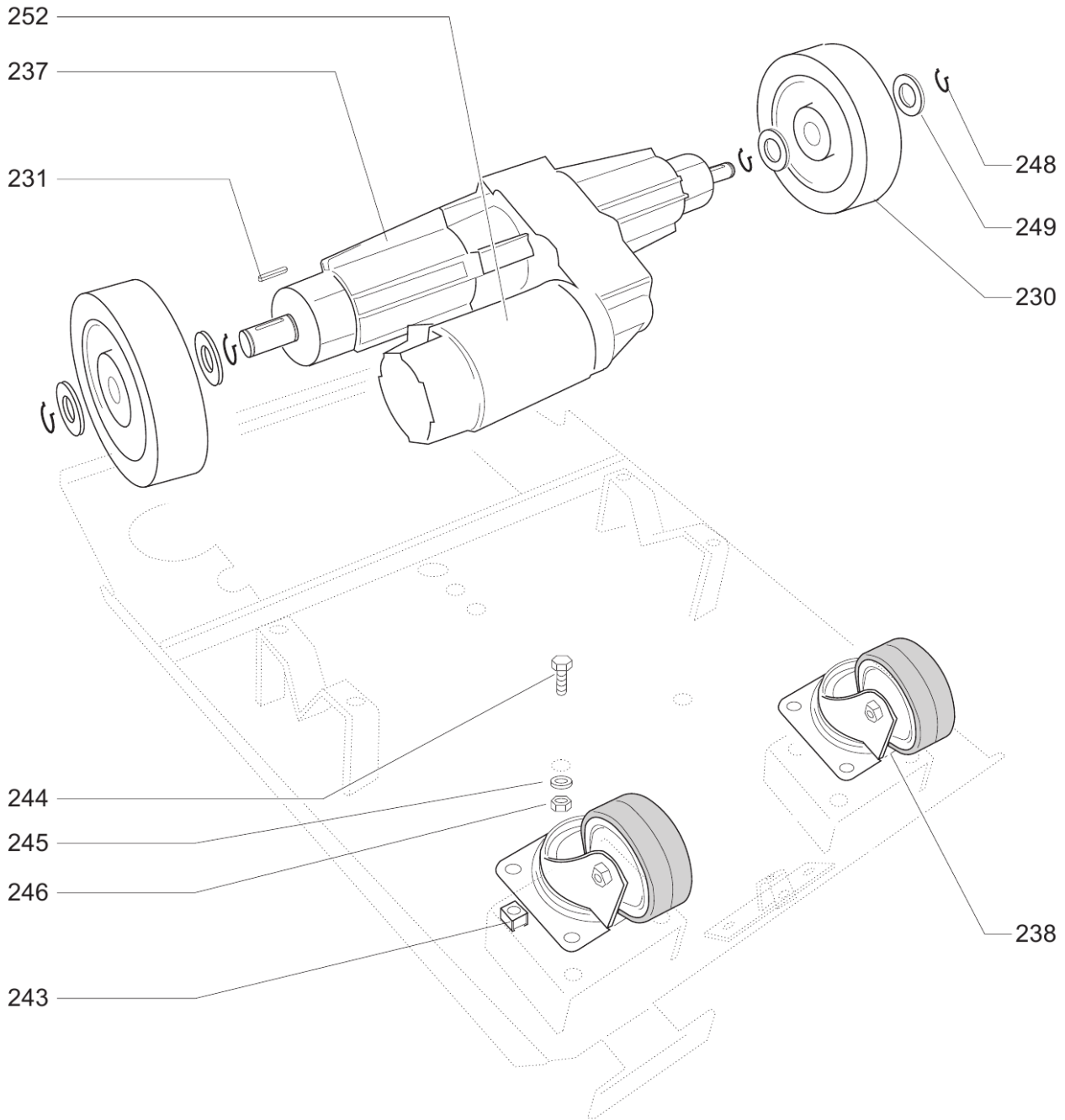
## Tank and Squeegee

<b>Ref Number</b>	<b>Part Number</b>	<b>Part Description</b>	<b>Context Notes</b>	<b>Quantity</b>
(°)	PAS17	Float Assembly		1
140	PAS15	Strap		1
141	PAS330	Sleeve		1
142	1995BS	Vacuum Motor		1
143	PAS102	Gasket		1
144	410.105.1	Tie Rod		1
145	PAS79	Screen		1
146	PAS107	Motor Support Filter		1
147	500.068	Float Support		1
148	500.094	Float		1
149	PAS103	Seal		1
150	510.150.1	Recovery Tank		1
151	PFS0081	Screw M6 x 50		2
152	PFS0081	Screw M6 x 50		2
153	PFS0085	Front Squeegee Rubber (35.24")		1
	PAS457A	Front Squeegee Rubber		
154	PFS0080	Rear Squeegee Rubber		1
	PAS458A	Rear Squeegee Rubber		
155	501.180	Angle Mounting		1
156	PAS2074	Chain		1
	PAS41	Split Pins and Chain		
158	PAS266	Spit Pin		2
159	510.159	Squeegee Adjustment Bracket		1
163	PAS19	Pin		1
165	PAS184	Lever		1
166	PAS403	Bracket		1

<b>Ref Number</b>	<b>Part Number</b>	<b>Part Description</b>	<b>Context Notes</b>	<b>Quantity</b>
167	PAS235	Spring		1
168	510.168	Tie Rod		1
169	PAS404	Support		1
170	PAS610	Complete Squeegee Assembly		1
171	PAS34	Adjusting Screw		2
173	505.132	Squeegee Assembly Support		1
174	PAS265	Cross Member		1
175	701.291	Squeegee Support Caster		1
176	PAS459	Squeegee Lever		1
177	PAS280	Roll Pin		1
178	PAS35	Knob		1
179	510.179	Battery Tray		1
180	PAS36	Drain Hose Plug w/Strap		1
181	PAS37	Drain Hose		1
182	PAS2069	Hose Holder		1
183	PAS507	Screw		1
184	PAS14	Pedal Cover		1
185	PAS440	Squeegee Lift Lever		1
186	PAS37	Drain Hose		1
187	PAS2013	Squeegee Hose		1
188	PAS2075	Hose Clamp		1
189	PAS2066	Squeegee Retainer Strap		1
190	505.608	Screw		1
191	505.607	Screw		1
192	505.607	Screw		2
192A	PAS1	Bumper Wheel		2
192B	700.124	Nut		2

<b>Ref Number</b>	<b>Part Number</b>	<b>Part Description</b>	<b>Context Notes</b>	<b>Quantity</b>
193	PAS959	Split Pin		2
196	PAS2068	Squeegee Body		1
198	701.292	Knob		1
199	PAS2079	Rear Squeegee Blade Retainer		1
201	410.105.1	Tie Rod		1
202	PAS2077	Pin		2
204	PFS0064	Solution Tank Cap		1
205	510.205	Terminal Block		1
206	510.206	Squeegee Adjustment Bracket Support		1
207	PAS70	Rubber Gasket		1
208	PAS71	Flange		1
209	PAS72	Rubber Gasket		1
210	PAS73	Flange		1
211	PAS393	Hose Fitting		1
212	PAS936	Screw M10 x 40		2
213	PAS2072	Hose Clamp		1
Not Shown	33783	Wing Nut		8

### Wheels



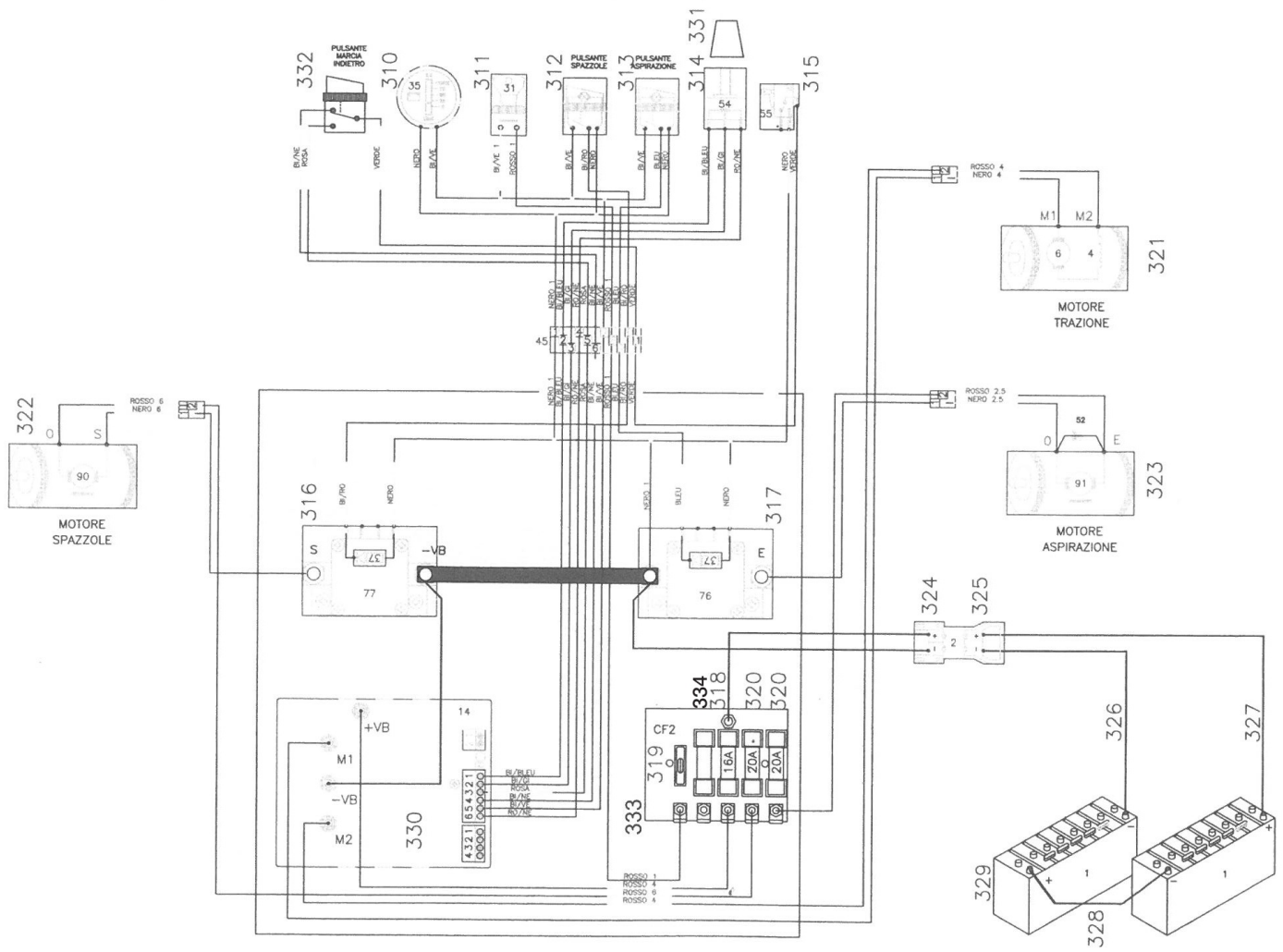
Rendered by LeadVenture, Inc.



## Wheels

<b>Ref Number</b>	<b>Part Number</b>	<b>Part Description</b>	<b>Context Notes</b>	<b>Quantity</b>
230	PAS44A	Wheel		2
231	PAS351	Square Key		2
237	510.237	Traction Motor		1
238	PAS51	Swivel Caster		2
243	850.033	Nut Clip		8
244	PAS167	Screw		8
245	PAS188	Washer		8
246	PAS176	Nut		8
248	PAS491	Seeger Ring		4
249	PAS356	Washer		4
252	PAS276	Drive Motor		
252	510.237.M	Traction Motor		

# Electrical Layout



Rendered by LeadVenture, Inc.

## Electrical Layout

<b>Ref Number</b>	<b>Part Number</b>	<b>Part Description</b>	<b>Context Notes</b>	<b>Quantity</b>
310	PAS52N	Rectangle Battery Gauge		1
311	PAS53NS	Key and Switch (New Style)		1
312	PAS54	Brush Switch		1
313	PAS54	Brush Switch		1
314	PAS55	Speed Control Potentiometer Assembly		1
315	PAS56	Micro Switch		1
316	PAS57	Relay 24V		1
317	PAS57	Relay 24V		1
318	PAS117	Fuse 16A		1
319	PFS0095	Fuse 10A		1
320	PAS118	Fuse 20A		2
321	510.237	Traction Motor		1
322	PAS4	Brush Motor		1
323	1924	Vacuum Motor		1
324	PAS59R	SB50 Red Connector w/Pins		1
325	PAS59R	SB50 Red Connector w/Pins		1
326	500.263	Cable		1
327	500.266	Cable		1
328	PAS141	Battery Jumper Cable		1
329	B27TMX	Wet, Lead-Acid Battery 12VDC 105 Ah		2
330	PAS294A	PCB		1
331	PAS88	Speed Control Knob		1
332	PAS295	Reverse Button		1
333	PAS353	Fuse Terminal PCB		1
334	PAS119	Circuit Breaker 6.3A		1